

**SUPPLEMENTAL RESOLUTION OF THE COUNTY OF SAN DIEGO
INDEPENDENT REDISTRICTING COMMISSION
AMENDING FINAL REPORT TO REFLECT
TECHNICAL AMENDMENTS TO 2021 REDISTRICTING PLAN**

WHEREAS, there is, in the County of San Diego, an Independent Redistricting Commission established in accordance with section 21550 of Chapter 6.5 of Division 21 of the California Elections Code and Section 400 of Article IV of the Charter of the County of San Diego (“Charter”) provides that, for the purpose of electing members of the Board of Supervisors (“board”), the county is divided into five legally apportioned districts, and

WHEREAS, in the year following the year in which the decennial federal census is taken, the commission is required to adjust the boundary lines of the supervisorial districts of the board in accordance with the procedures and criteria set forth in section 21552 of Chapter 6.5 of Division 21 of the Elections Code and in section 400.1 of Article IV of the Charter, and

WHEREAS, on December 14, 2021, pursuant to subdivisions (d)(1) of Section 21552 of Chapter 6.5 of Division 21 of the Elections Code, the commission passed a Resolution adopting a final redistricting plan adjusting the boundaries of the supervisorial districts in compliance with subdivisions (a) and (b) of Section 21552 of Chapter 6.5 of Division 21 of the Elections Code, and

WHEREAS, on December 14, 2021, the commission adopted a report pursuant to subdivision (d)(3) entitled, County of San Diego 2021 Independent Redistricting Commission Final Report (“Final Report”), that explains the basis on which the commission made its decisions in achieving compliance with the criteria described in subdivisions (a) and (b) of Section 21552 of Chapter 6.5 of Division 21 of the Elections Code, and

WHEREAS, on January 26, 2022, the commission passed a Supplemental Resolution Of The County Of San Diego Independent Redistricting Commission Approving Technical Adjustments To The 2021 Redistricting Plan Adjusting The Boundaries Of The Supervisorial Districts (“Supplemental Resolution”), and

WHEREAS, amendments to the Final Report are required to conform to the Supplemental Resolution,

**NOW, THEREFORE, THE COUNTY OF SAN DIEGO INDEPENDENT
REDISTRICTING COMMISSION DOES RESOLVE AS FOLLOWS:**

Section 1. The foregoing recitals are true and correct and form the basis of this Resolution.

Section 2. The commission adopts the following amendments to its Final Report to conform with the Supplemental Resolution (text amendments are shown in strike-through text and bolded italic text):

The IRC's final map, called "2021 Redistricting Plan for the County of San Diego Board of Supervisors", ***including technical amendments approved on January 26, 2022 that did not involve any population and were consistent with the intent of the plan***, meets all legal requirements: it satisfies the standard for substantially equal population in each district, with deviations from equality as necessary to satisfy other legal criteria; it complies with the federal Voting Rights Act, including two compact majority-minority districts constructed according to community of interest testimony; its districts are contiguous; it divides only one city, the City of San Diego, the population of which is too large for a single district; the configuration of each district reflects community of interest testimony, with geographic division minimized to the extent possible; and finally, after achieving all other legal requirements, the districts are compact as defined in California law and satisfy the requirements of the Charter of the County of San Diego, with all districts including unincorporated territory and two districts with geographic area that is predominantly outside of the incorporated cities.

2021 REDISTRICTING PLAN FOR THE COUNTY OF SAN DIEGO BOARD OF SUPERVISORS

Legend

- County Boundary
- Municipal Boundary
- Indian Reservation
- Military Facility
- Supervisory Districts (2011)
- Broadway Pier Ferry Landing

Final Working Draft Map

Supervisory Districts

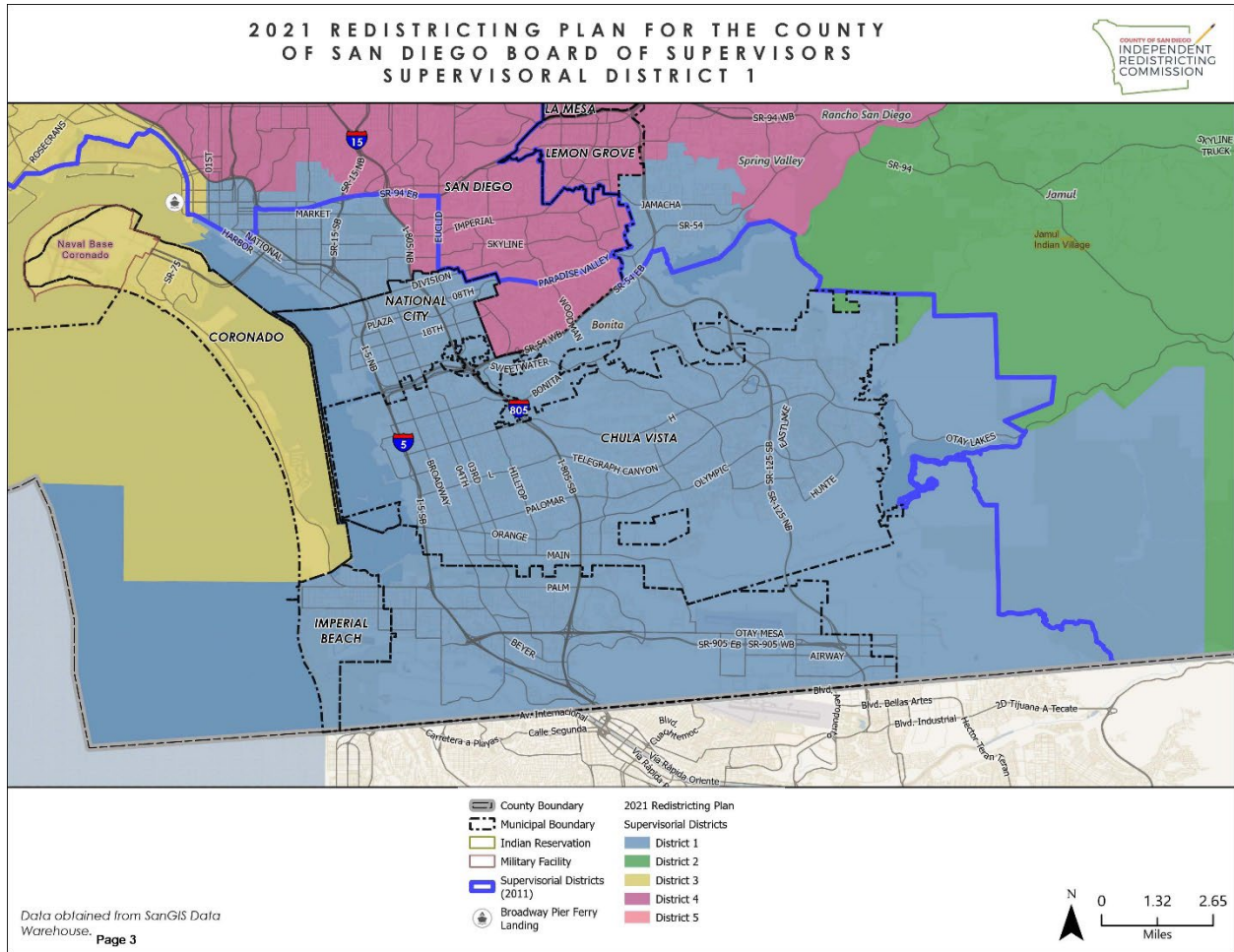
- District 1
- District 2
- District 3
- District 4
- District 5

Scale: 0 5 10 Miles

Data obtained from SanGIS Data Warehouse.

Page 2

Page 19: Replace the Map of District 1 with the following amended map:

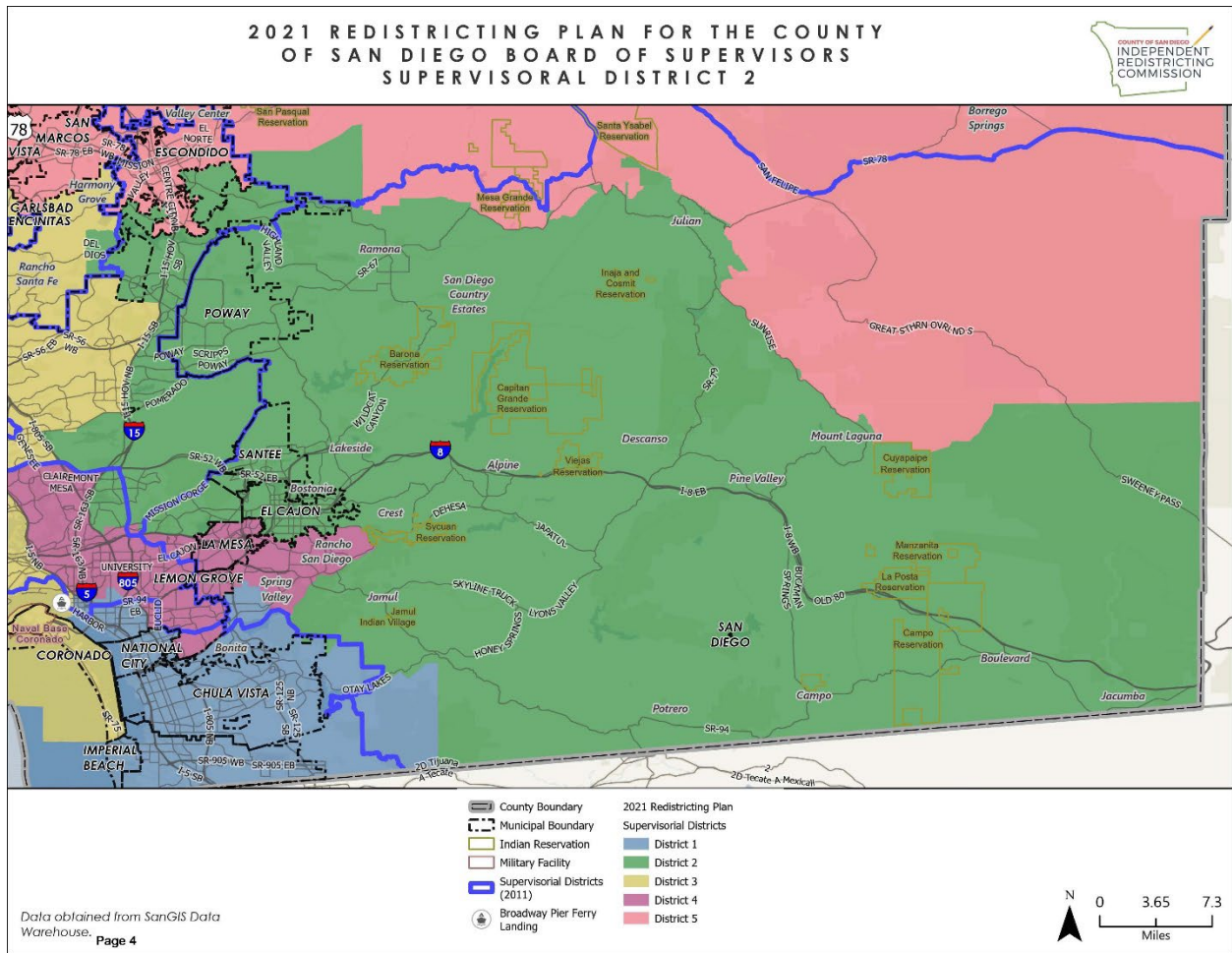


Page 24: Unincorporated Area. Amend chart as follows:

Unincorporated Area

Unincorporated	Total Area (sq mi)	Unincorporated Area (sq mi)	Percent Unincorporated Area	Incorporated Area (sq mi)	Percent Incorporated Area
District 1	175	66-67	38.0% 38.2%	108	62.0% 61.8%

Page 25: Replace the Map of District 2 with the following amended map:



Page 26: Cities & Unincorporated Placed. Amend chart as follows:

Cities and Unincorporated Places

Community Type	Name	Divided	Reason for Division
Census Designated Place	Alpine	False	
Census Designated Place	Bostonia	False	
Census Designated Place	Boulevard	False	
Census Designated Place	Campo	False	
Census Designated Place	Crest	False	
Census Designated Place	Del Dios	False	
Census Designated Place	Descanso	False	
Census Designated Place	Eucalyptus Hills	False	
Census Designated Place	Granite Hills	False	
Census Designated Place	Harbison Canyon	False	

Census Designated Place	Jacumba	False	
Census Designated Place	Jamul	False	
Census Designated Place	Julian	False	
Census Designated Place	Lakeside	False	
Census Designated Place	Mount Laguna	False	
Census Designated Place	Pine Valley	False	
Census Designated Place	Potrero	False	
Census Designated Place	Ramona	False	
Census Designated Place	Rancho San Diego	True	Geographic division only; inevitably split based on the geospatial overlap of the Sycuan Reservation and Rancho San Diego CDP.
Census Designated Place	San Diego Country Estates	False	
Census Designated Place	Winter Gardens	False	
Municipalities	El Cajon	False	

Page 34: Amend chart as follows:

Community of Interest Type	Name or Identifying Information	Divided	Reason for Division
Indian Reservations	Manzanita Reservation	False	
Indian Reservations	Sycuan Reservation	True False	Geographic division only; inevitably split based on the geospatial overlap of the Sycuan Reservation and Rancho San Diego CDP.
Indian Reservations	Viejas Reservation	False	
Military Installations	MCAS Miramar	True False	Geographic division only; split due to large area and overlap with Community Plan Areas that are in different supervisorial districts. Maintaining the MCAS Miramar Military Installation within a single district would split the Kearny Mesa, Tierrasanta, and University Community Plan Areas.
Sanitation Districts	San Diego County Sanitation District L&I	True	Geospatial inevitability; split due to geospatial multi-part nature of the Sanitation District (i.e., the single geospatial polygon includes multiple dis-contiguous areas throughout San Diego County).

Unified School Districts	Unified Mt Empire	True	Geospatial inevitability; overlapping geography with Desert Community Plan Area.
Unified School Districts	Unified Ramona	True	Overlapping geography with Mesa Grande Indian Reservation.
Unified School Districts	Unified Poway	True	Overlapping geography with Black Mountain Ranch, Rancho Peñasquitos, and Torrey Highlands Community Plans Areas.
Unified School Districts	Unified San Diego	True	Split due to its large geographic area, population density, and overlap with COIs that are in within differing supervisorial districts.
Unified School Districts	Unified Valley Center-Pauma	True	Split to reduce total population of supervisorial district 5 and bolster total population of supervisorial district 2 while maintaining other COIs.
Water Districts	Cuyamaca (Calif) Water Land	False	
Water Districts	Helix Water District - Special Area Land	False	

Page 36: Unincorporated Area. Amend chart as follows:

Unincorporated Area

Unincorporated	Total Area (sq mi)	Unincorporated Area (sq mi)	Percent Unincorporated Area	Incorporated Area (sq mi)	Percent Incorporated Area
District 2	1,567 1568	1,379	88.0%	188 189	12.0%

[illegible]

- Community Plan Areas (City of San Diego) entirely within District 3: Black Mountain Ranch, Carmel Valley, Del Mar Mesa, Fairbanks Ranch Country Club, La Jolla, Los Peñasquitos Canyon, Midway-Pacific Highway, Mira Mesa, Mission Bay Park, Mission Beach, North City Future Urbanizing Area NCFUA Subarea-II, Ocean Beach, Pacific Beach, Pacific Highlands Ranch, Peninsula, Rancho Peñasquitos, Torrey Highlands, Torrey Hills, Torrey Pines, University, Via De La Valle
- Community Plan Areas (City of San Diego) partially within District 3: Downtown, Reserve, ***University***

Page 41: Amend chart as follows:

Community of Interest Type	Name or Identifying Information	Divided	Reason for Division
Community Plan Areas (City of San Diego)	NCFUA Subarea-II	False	
Community Plan Areas (City of San Diego)	Ocean Beach	False	
Community Plan Areas (City of San Diego)	Pacific Beach	False	
Community Plan Areas (City of San Diego)	Pacific Highlands Ranch	False	
Community Plan Areas (City of San Diego)	Peninsula	False	
Community Plan Areas (City of San Diego)	Rancho Peñasquitos	False	
Community Plan Areas (City of San Diego)	Reserve	True	Geographic split only; inevitably split due to the geospatial multi-part nature of the Community Plan Area. The majority of the Reserve Community Plan Area is located west of downtown San Diego, with a portion located east of Scripps Miramar Ranch Community Plan Area.
Community Plan Areas (City of San Diego)	Torrey Highlands	False	
Community Plan Areas (City of San Diego)	Torrey Hills	False	
Community Plan Areas (City of San Diego)	Torrey Pines	False	
Community Plan Areas (City of San Diego)	University	False True	<i>Geographic division only; maintaining the MCAS Miramar Military Installation within a single district split the University Community Plan Areas.</i>
Community Plan Areas (City of San Diego)	Via De La Valle	False	

Page 46: Cities and Unincorporated Places. Amend chart as follows:

Cities and Unincorporated Places

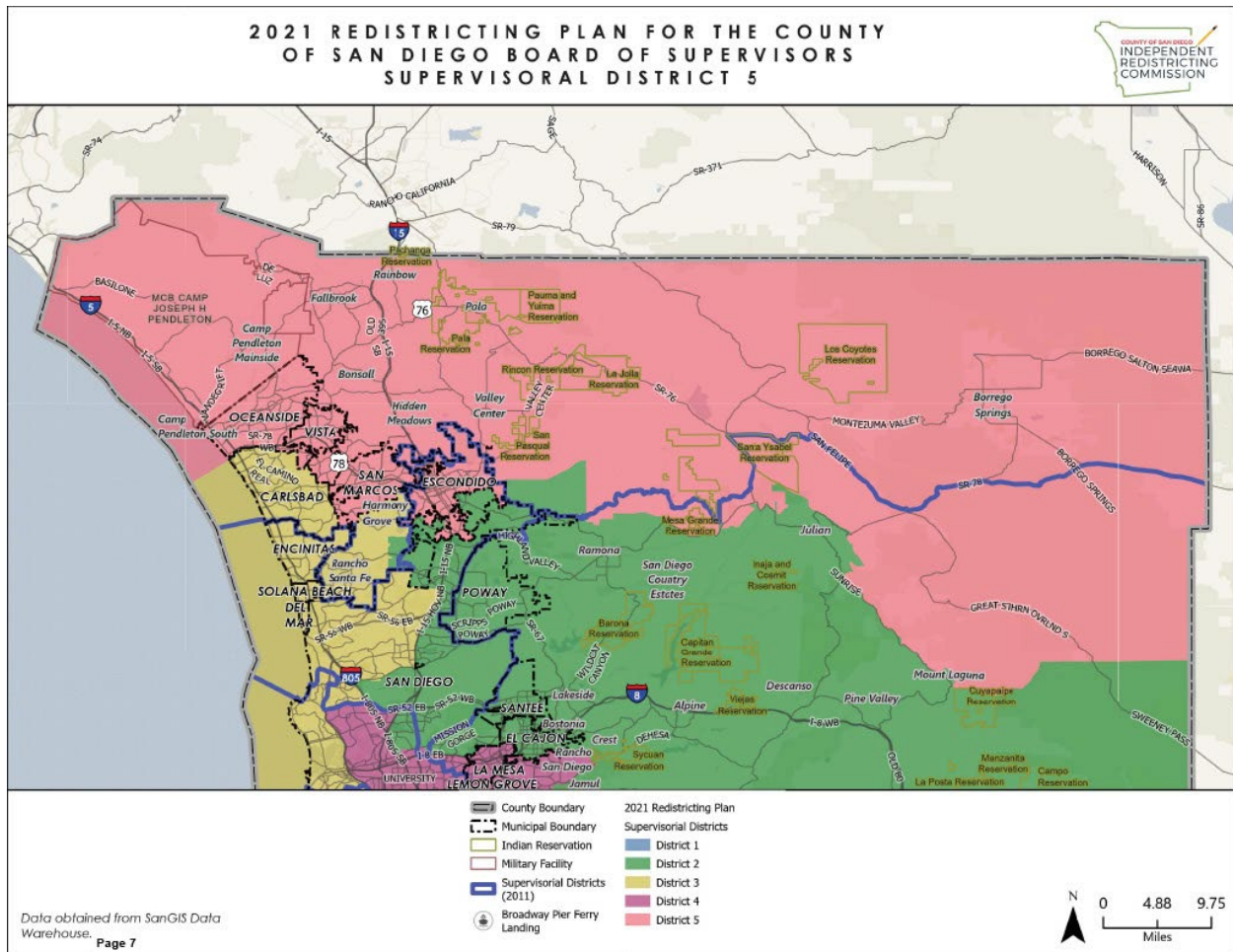
Community Type	Name	Divided	Reason for Division
Census Designated Places	Casa De Oro-Mount Helix	False	
Census Designated Places	Rancho San Diego	False True	<i>Geographic division only; inevitably split based on the geospatial overlap of the Sycuan Reservation and Rancho San Diego CDP.</i>
Census Designated Places	Spring Valley	False	
Municipalities	La Mesa	False	
Municipalities	Lemon Grove	False	
Municipalities	San Diego	True	Split based on its total population being greater than the ideal population of a supervisorial district. With a total population of 1,389,851 (2020 Census), the City of San Diego could be split between as few as three supervisorial districts; however, it is split between four supervisorial districts due to the geospatial shape and expansiveness of the incorporated area.

Page 51: Unincorporated Area. Amend chart as follows:

Unincorporated Area

Unincorporated	Total Area (sq mi)	Unincorporated Area (sq mi)	Percent Unincorporated Area	Incorporated Area (sq mi)	Percent Incorporated Area
District 4	101	23	22.7% 22.6%	78	77.3% 77.4%

Replace the Map of District 5 with the following amended map:



Page 60: Unincorporated Area. Amend chart as follows:

Unincorporated Area

Unincorporated	Total Area (sq mi)	Unincorporated Area (sq mi)	Percent Unincorporated Area	Incorporated Area (sq mi)	Percent Incorporated Area
District 5	2,186 2,185	2,062 2,061	94.3%	124	5.7%

PASSED AND ADOPTED by the County of San Diego Independent Redistricting Commission
at a duly noticed meeting held on January 26, 2022, by the following vote:

Ayes:	Bame, Brown, Caterina, Chen, Diaz, Dostal, Garcia, Hansen, Inman, Kruglyak, Larson, Ponds
Noes:	None
Abstain:	None
Absent:	Russ, Surban



David Bame, Chair
County of San Diego
Independent Redistricting Commission