
County of San Diego IRC Approved Mapping Motion 10/21/21

ON MOTION of Commissioner Inman, seconded by Commissioner Larson, the Commission approved the following direction to FLO Analytics regarding Draft Map 2:

- For District 3 swap PANA map for that district and extend up as far as possible into Linda Vista; try to expand the coastal area eastward as discussed in the previous motion along I-5 to widen the coastal district, if possible.
- As coastal district is widened, if possible, include all of Carlsbad.

COUNTY OF SAN DIEGO
SUPERVISORIAL DISTRICTS
DRAFT MAP 6 - 10/21/2021 MEETING

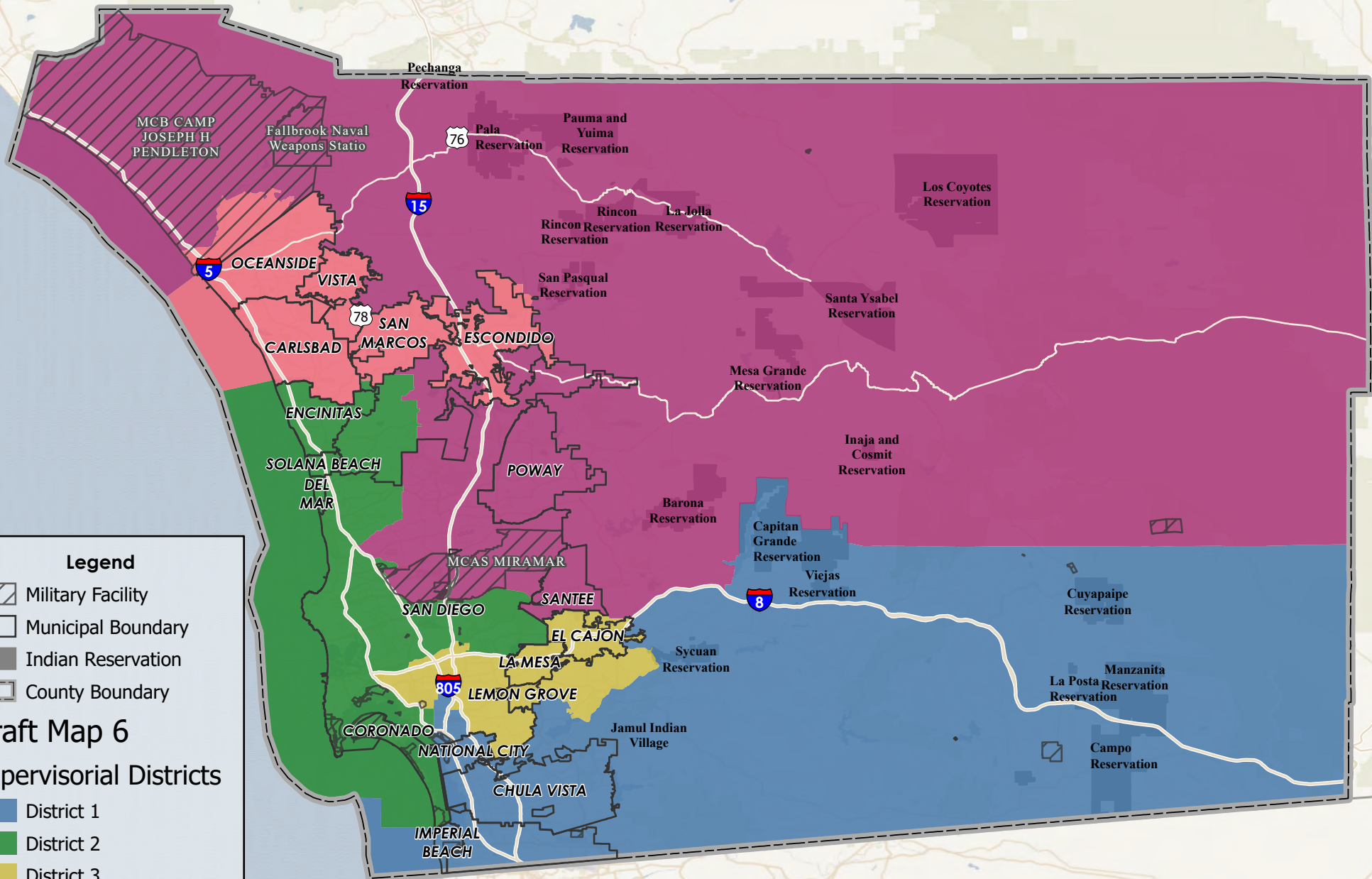


Legend

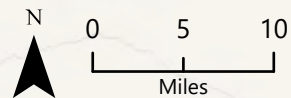
- Military Facility
- Municipal Boundary
- Indian Reservation
- County Boundary

Draft Map 6
Supervisoryal Districts

- District 1
- District 2
- District 3
- District 4
- District 5



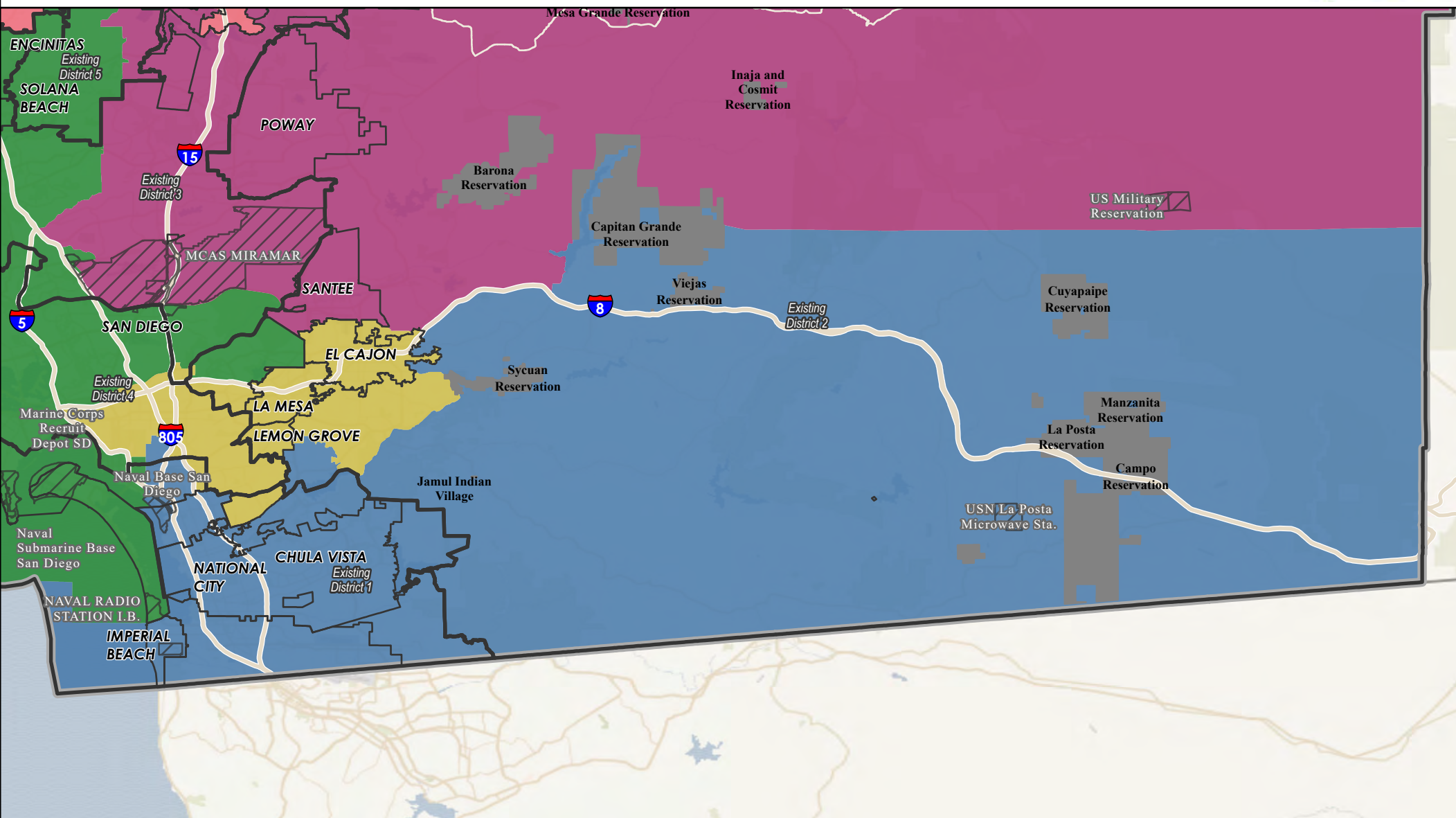
Data obtained from SanGIS Data Warehouse.



COUNTY OF SAN DIEGO

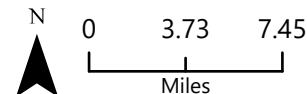
SUPERVISORIAL DISTRICTS - DRAFT MAP 6- 10/21/2021 MEETING

DISTRICT 1



- Supervisorial Districts (2011)
- Military Facility
- Indian Reservation
- Municipal Boundary
- County Boundary

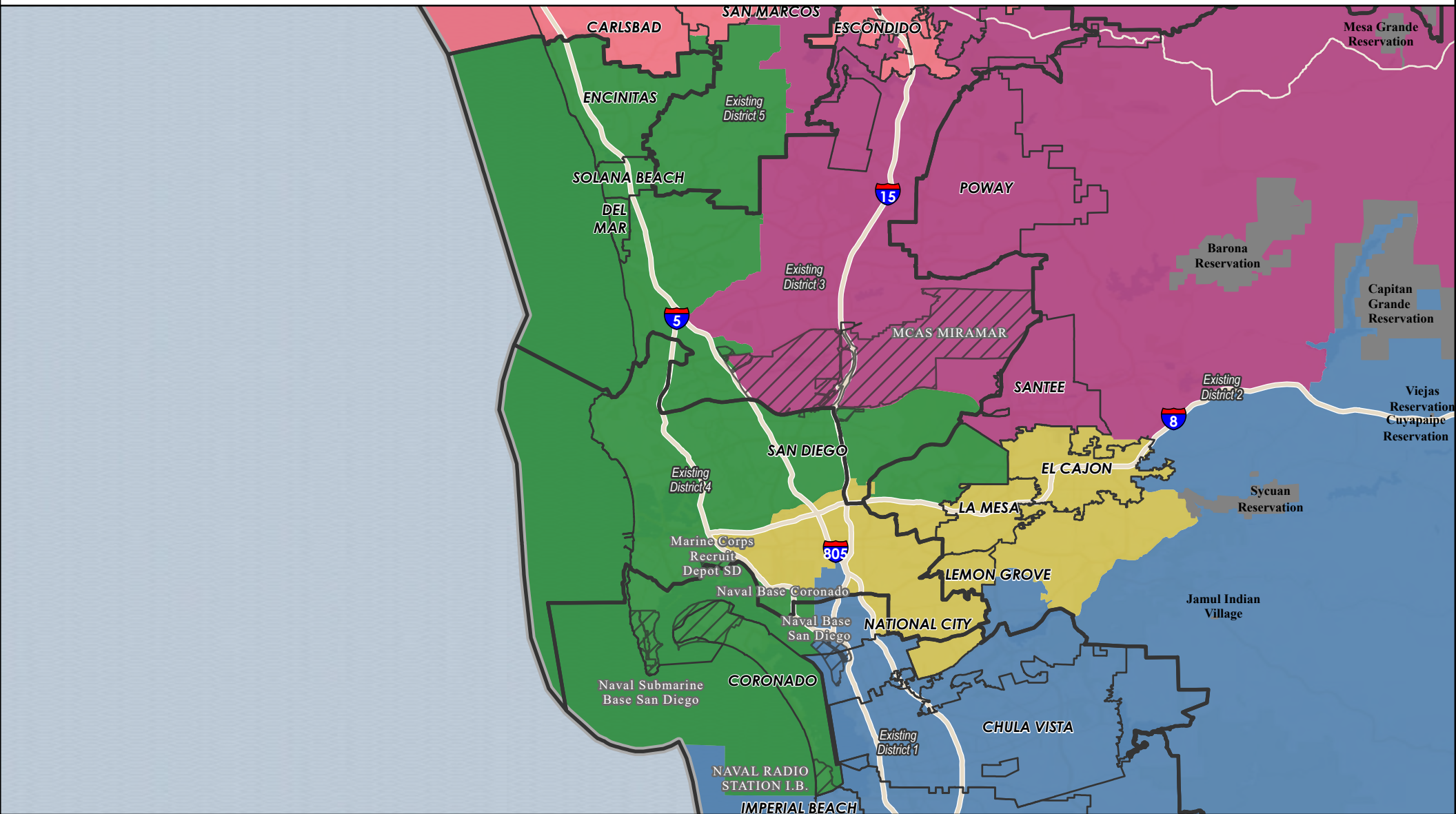
- Draft Map 6
Supervisorial Districts
- District 1
 - District 2
 - District 3
 - District 4
 - District 5



COUNTY OF SAN DIEGO

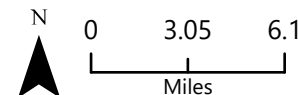
SUPERVISORIAL DISTRICTS - DRAFT MAP 6- 10/21/2021 MEETING

DISTRICT 2



- Supervisorial Districts (2011)
- Military Facility
- Indian Reservation
- Municipal Boundary
- County Boundary

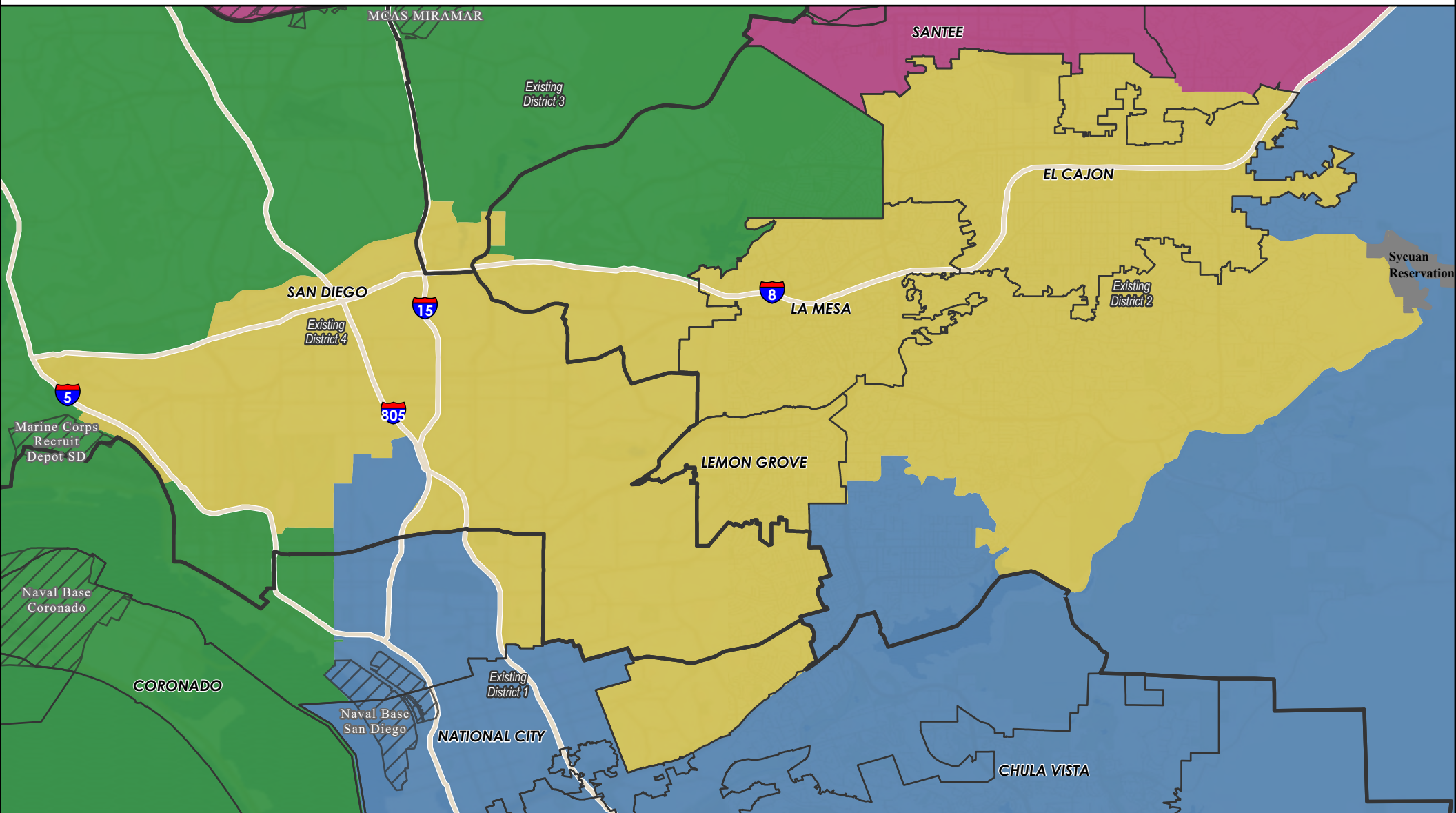
- Draft Map 6
Supervisorial Districts
- District 1
 - District 2
 - District 3
 - District 4
 - District 5



COUNTY OF SAN DIEGO

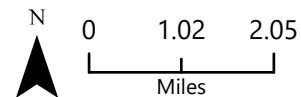
SUPERVISORIAL DISTRICTS - DRAFT MAP 6- 10/21/2021 MEETING

DISTRICT 3



- Supervisorial Districts (2011)
- Military Facility
- Indian Reservation
- Municipal Boundary
- County Boundary

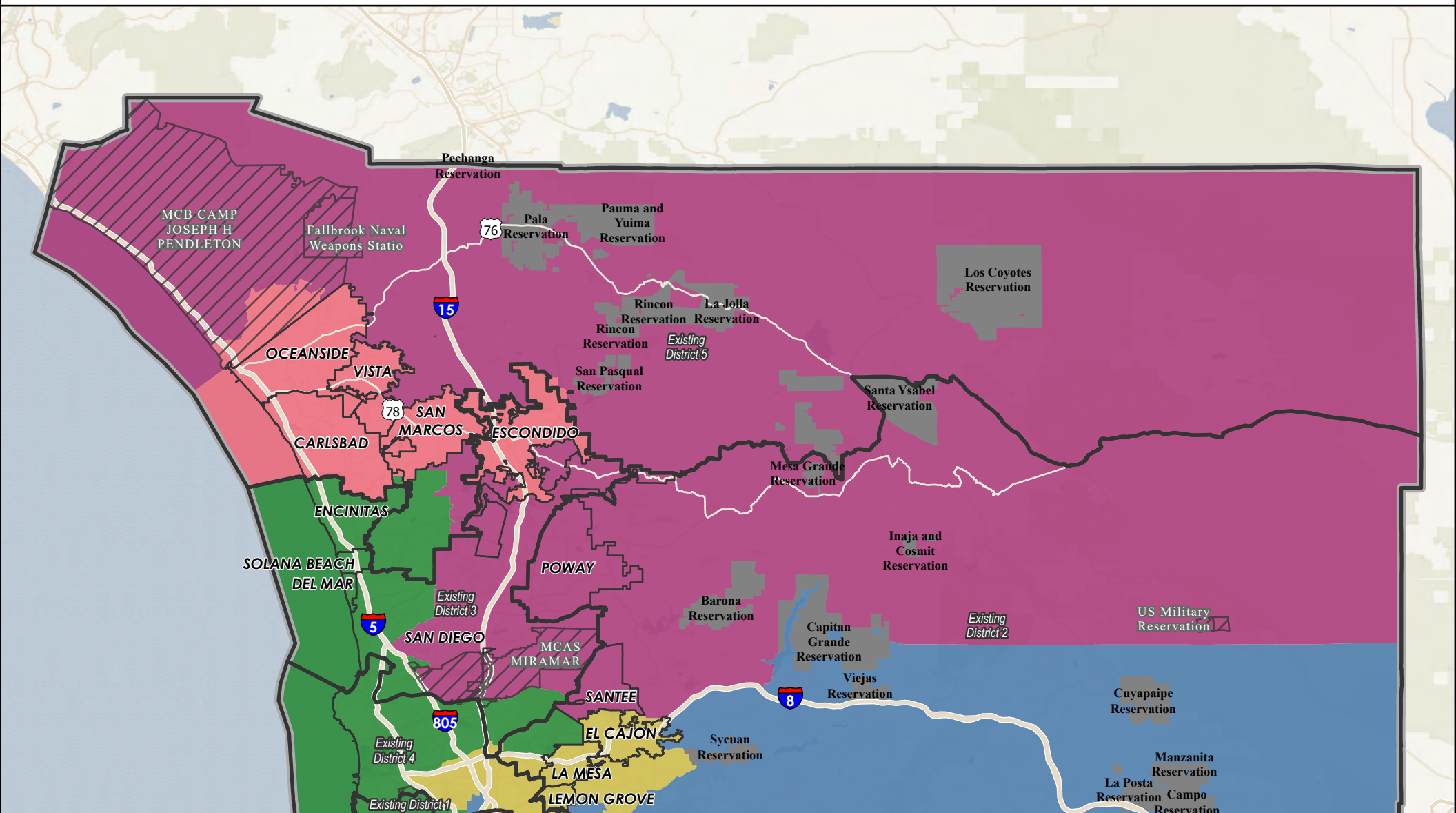
- Draft Map 6
Supervisorial Districts
- District 1
 - District 2
 - District 3
 - District 4
 - District 5



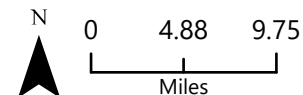
COUNTY OF SAN DIEGO

SUPERVISORIAL DISTRICTS - DRAFT MAP 6- 10/21/2021 MEETING

DISTRICT 4



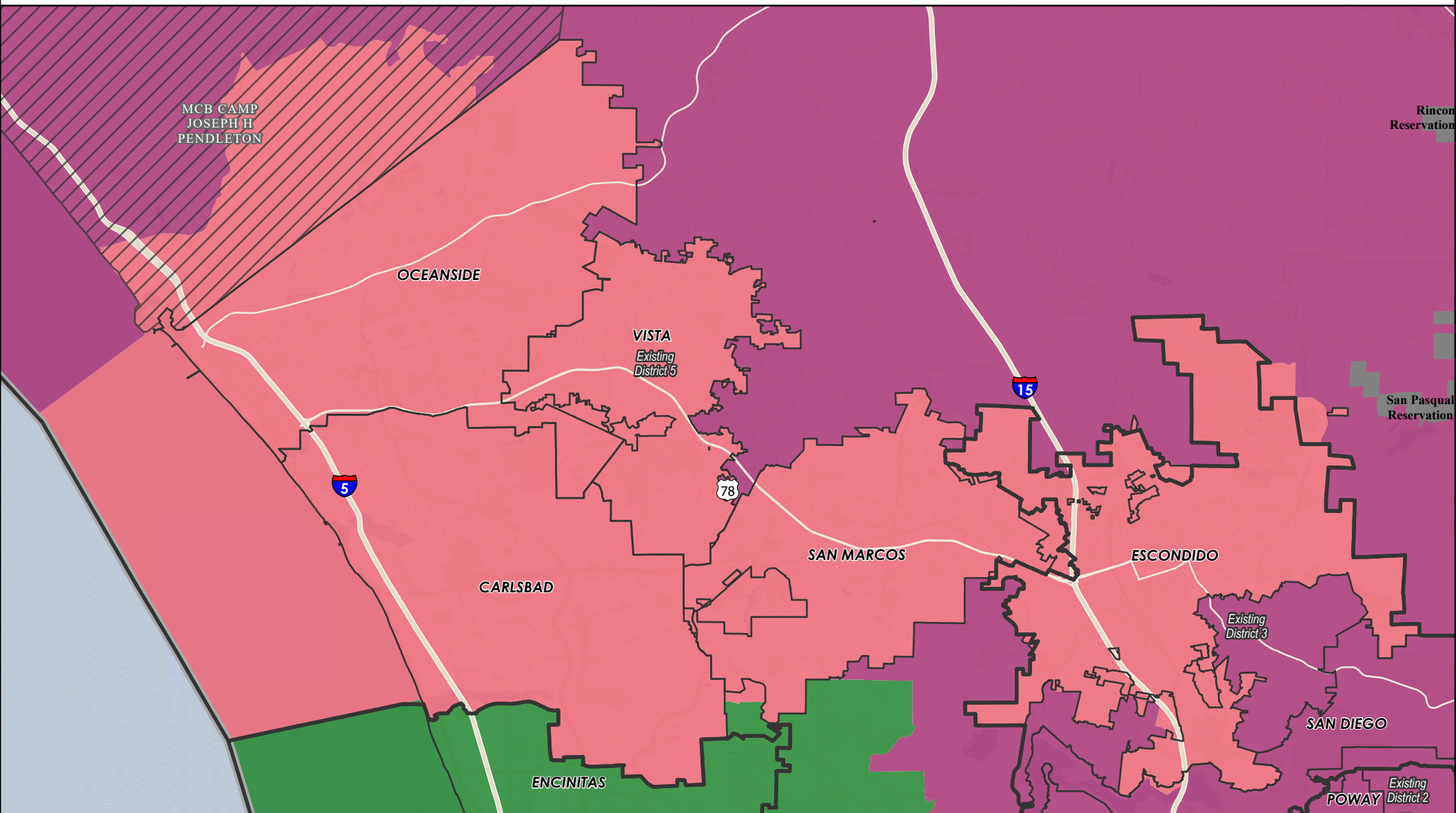
- | | |
|--------------------------------|-------------------------|
| Supervisorial Districts (2011) | Draft Map 6 |
| Military Facility | Supervisorial Districts |
| Indian Reservation | District 1 |
| Municipal Boundary | District 2 |
| County Boundary | District 3 |
| | District 4 |
| | District 5 |



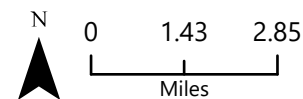
COUNTY OF SAN DIEGO

SUPERVISORIAL DISTRICTS - DRAFT MAP 6- 10/21/2021 MEETING

DISTRICT 5



- | | |
|--------------------------------|--------------------------------|
| Supervisorial Districts (2011) | Draft Map 6 |
| Military Facility | Supervisorial Districts |
| Indian Reservation | District 1 |
| Municipal Boundary | District 2 |
| County Boundary | District 3 |
| | District 4 |
| | District 5 |



Data obtained from SanGIS Data Warehouse.

County of San Diego IRC

Draft Map 6 – Supervisorial Districts Summary Statistics

10/21/2021



Equal Population Criterion

Ideal Population		660,452
Overall Deviation		6.8%
< 5.0%	5.0 - 10.0%	> 10.0%

California Statewide Database Adjusted
(incarcerated persons reallocation) 2020
Census P.L. 94-171 Redistricting Data
Summary Files - Total Population.

Total Population & Deviation per District

District ID	Total Population	Over / Under Ideal	Deviation From Ideal
1	643,136	-17,316	-2.6%
2	688,133	27,681	4.2%
3	669,236	8,784	1.3%
4	644,374	-16,078	-2.4%
5	657,383	-3,069	-0.5%

Total Population by Race/Ethnicity per District

District ID	White	Black or African American	American Indian or Alaska Native	Asian	Native Hawaiian and Pacific Islander	Some Other Race	Two or More Races	Hispanic/Latino
1	19.8%	4.7%	0.4%	11.2%	0.4%	0.4%	3.5%	59.6%
2	58.8%	3.1%	0.3%	12.5%	0.3%	0.7%	6.0%	18.4%
3	38.7%	9.4%	0.3%	11.3%	0.5%	0.6%	5.0%	34.3%
4	51.7%	2.3%	0.8%	18.2%	0.3%	0.5%	5.7%	20.4%
5	45.5%	2.5%	0.3%	7.6%	0.5%	0.5%	5.0%	38.0%

California Statewide Database (CA SWDB) Adjusted 2020 Census P.L. 94-171 Redistricting Data - Total Population by Race and Hispanic/Latino origin.

VAP by Race/Ethnicity per District

District	White	Black or African American	American Indian or Alaska Native	Asian	Native Hawaiian and Pacific Islander	Some Other Race	Two or More Races	Hispanic/Latino
1	22.1%	5.0%	0.4%	12.0%	0.4%	0.4%	3.0%	56.7%
2	61.2%	3.1%	0.3%	12.9%	0.3%	0.7%	4.8%	16.8%
3	42.0%	9.1%	0.3%	11.9%	0.5%	0.6%	4.4%	31.2%
4	54.9%	2.4%	0.8%	18.4%	0.4%	0.5%	4.4%	18.3%
5	49.4%	2.7%	0.3%	8.2%	0.5%	0.5%	4.1%	34.2%

CA SWDB Adjusted 2020 Census P.L. 94-171 Redistricting Data - Voting-age Population (VAP) by Race and Hispanic/Latino origin.

CVAP by Race/Ethnicity per District

District ID	White	Black or African American	American Indian or Alaska Native	Asian	Native Hawaiian and Pacific Islander	Two or More Races	Hispanic/Latino
1	28.2%	6.1%	0.3%	12.3%	0.6%	2.0%	50.4%
2	69.0%	3.4%	0.3%	9.7%	0.2%	2.7%	14.6%
3	48.5%	11.0%	0.2%	10.5%	0.5%	3.1%	26.0%
4	63.3%	2.7%	0.8%	14.5%	0.4%	3.1%	15.0%
5	58.2%	3.3%	0.4%	7.0%	0.4%	2.7%	27.7%

CA SWDB Adjusted 2015-2019 American Community Survey Citizen Voting-age Population (CVAP) by Race and Ethnicity Special Tabulation. Rounding may lead to summation of percentages not equal to 100% (+/- 1%).

Criteria Specific to the County of San Diego

At least three district shall include unincorporated territory.

Number of districts that include unincorporated territory: **5**

Districts that include unincorporated territory:

District 1

District 2

District 3

District 4

District 5

Two district must be comprised of primarily unincorporated territory.

Number of districts that are primarily unincorporated territory: **2**

Districts that are primarily unincorporated territory:

District 1

District 4

County of San Diego IRC

Draft Map 6 – Supervisorial Districts Summary Statistics

10/21/2021



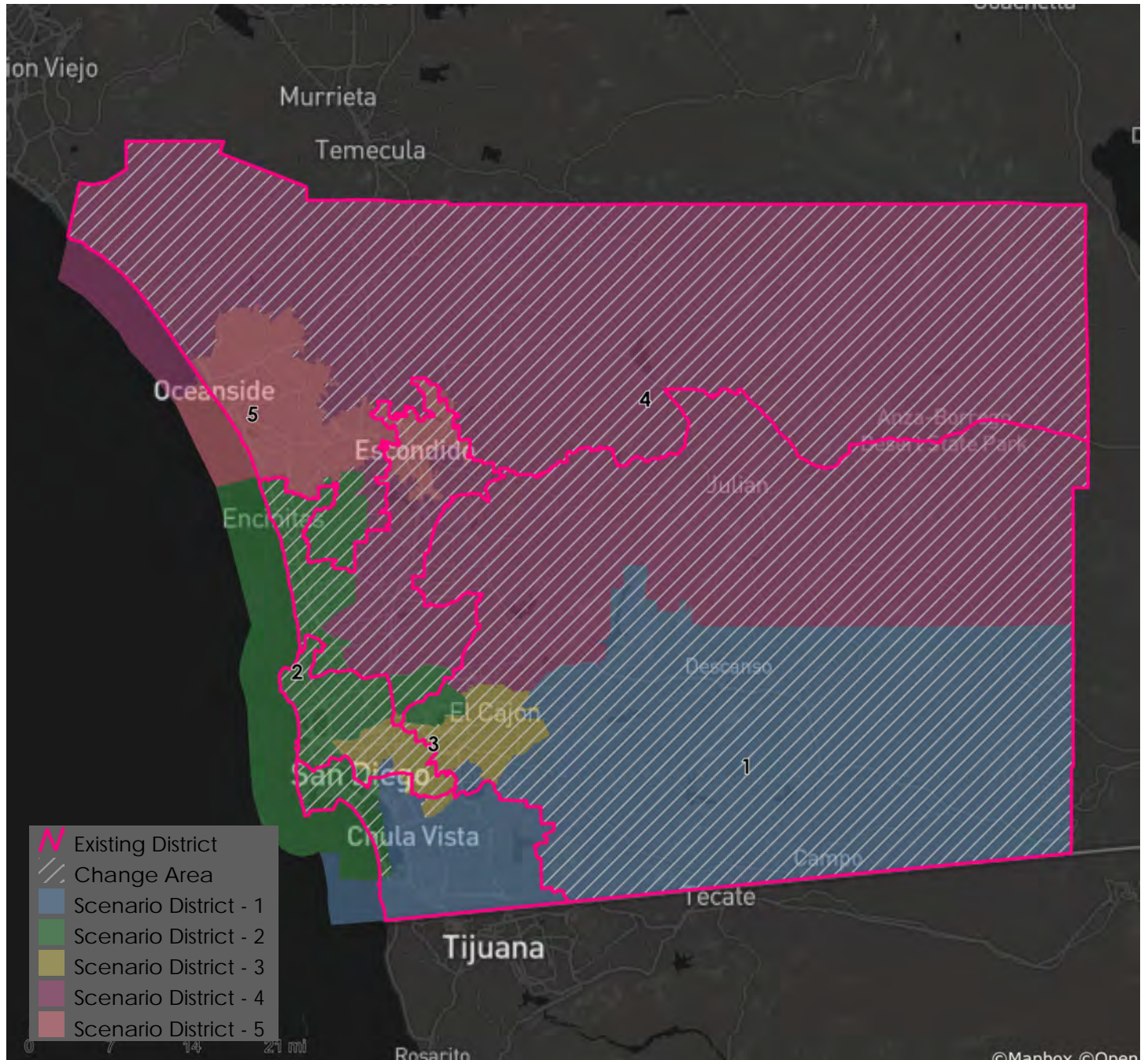
Preservation of Geographic Integrity Criteria (i.e., minimize division of cities, communities of interest, etc.)

COI Category	Total # of COIs	# of COIs Preserved in Minimum Districts	% of COIs Preserved in Minimum Districts	COIs Not Preserved in Minimum # of Districts
Community Builder-submitted COIs	18	7	39%	78 Cooridor, BIPOC Immigrant & Refugee Communities, BIPOC Immigrant and Refugee, BIPOC, Immigrant & Refugee, Carlsbad and North County neighbors, Fallbrook, I live in North Encanto but a lot of our resources as in La Mesa, Lemon Grove, or in the city., North County San Diego Asian Diaspora, South Bay, Twin Oaks Valley, Valley Center
Municipalities	26	25	96%	San Diego
Indian Reservations	20	19	95%	Sycuan Reservation
Community Villages	38	34	89%	Lakeside, North County Metro - East, North County Metro - North, Spring Valley
Community Plan Areas	142	107	75%	Alpine, Barrio Logan, Bonsall, Central Mountain, County Islands, Crest - Dehesa, Cuyamaca, Del Mar Mesa, Descanso, Desert, Downtown, Encanto Neighborhoods, Greater Golden Hill, Hidden Meadows, Lakeside, Los Penasquitos Canyon, Midway-pacific Highway, Military Facilities, Mira Mesa, Mission Valley, Navajo, North County Metro, North Park, Old Town San Diego, Pacific Highlands Ranch, Pendleton - De Luz, Pine Valley, Reserve, San Dieguito, Southeastern San Diego, Spring Valley, Sweetwater, Tierrasanta, Uptown, Valle De Oro

County of San Diego IRC

Draft Map 6 – Supervisorial Districts Summary Statistics

10/21/2021



Metadata

Run Date/Time:	2021-10-22 22:22:09
Workflow Directory:	X:\F2089_San_Diego_County\Projects\Alteryx\
Feature Class:	File: gdb:X:\F2089_San_Diego_County\Data\Workspace_AB.gdb\Blocks_2020_02
Scenario:	Districts_DraftMap_6