
County of San Diego IRC Approved Mapping Motion 10/21/21

ON MOTION of Co-Vice Chair Caterina, seconded by Commissioner Russ, the Commission approved the following direction to FLO analytics regarding Draft Map 1:

- Move Carlsbad into District 4 and move Escondido into District 5. And in District 3, incorporate the PANA map. That may change District 2, which FLO is directed to adjust accordingly.
- Try to move District 3 east to extend to the border with District 5.
- Explore expansion of District 2 slightly east and south, and ask FLO to present the numbers of that result.

COUNTY OF SAN DIEGO SUPERVISORIAL DISTRICTS DRAFT MAP 8 - 10/21/2021 MEETING



Legend

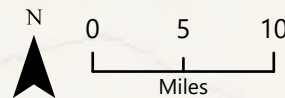
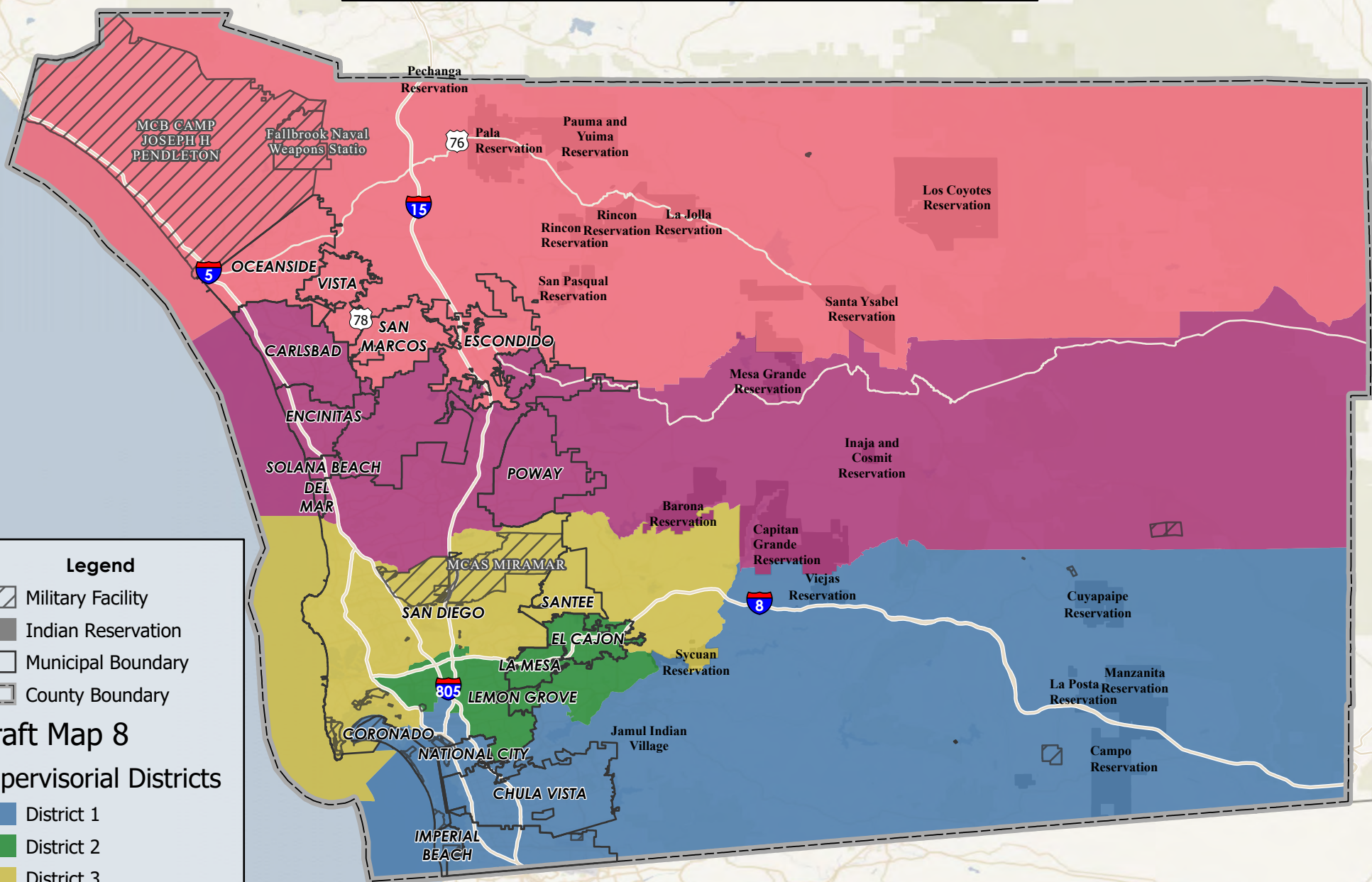
- Military Facility
- Indian Reservation
- Municipal Boundary
- County Boundary

Draft Map 8

Supervisoryal Districts

- District 1
- District 2
- District 3
- District 4
- District 5

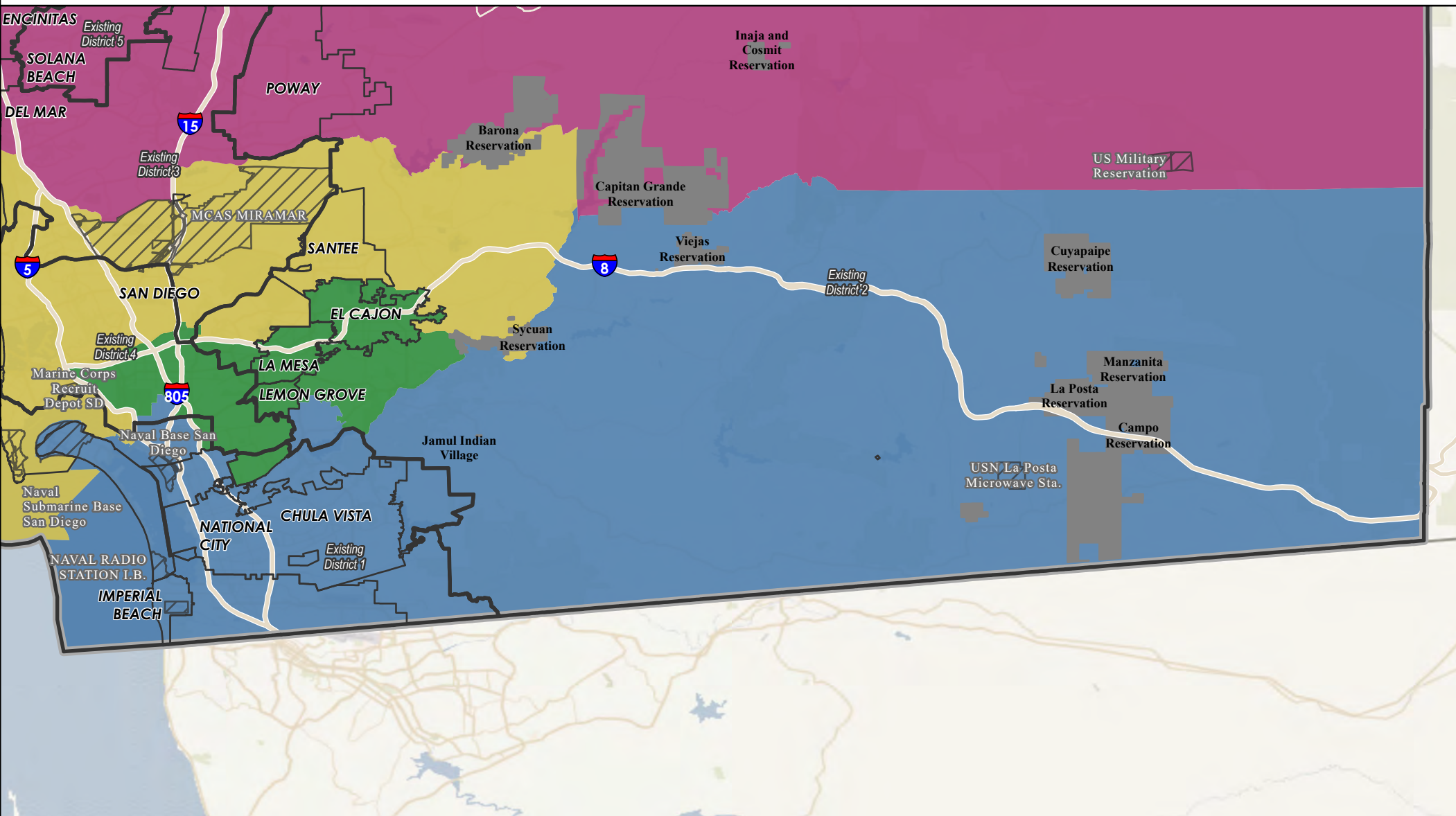
Data obtained from SanGIS Data Warehouse.



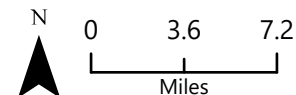
COUNTY OF SAN DIEGO

SUPERVISORIAL DISTRICTS - DRAFT MAP 8- 10/21/2021 MEETING

DISTRICT 1



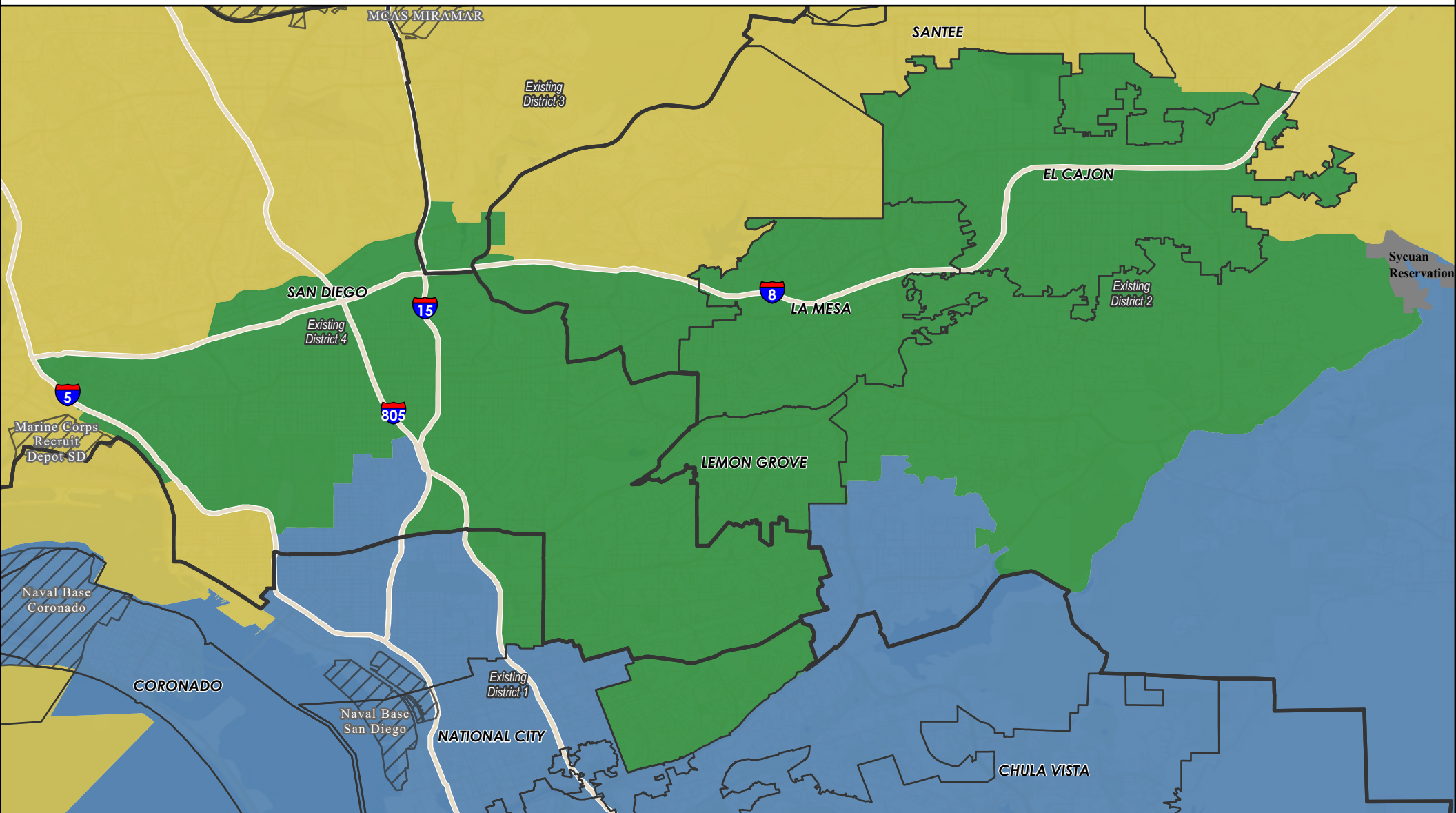
- | | |
|--------------------------------|--------------------------------|
| Supervisorial Districts (2011) | Draft Map 8 |
| Military Facility | Supervisorial Districts |
| Indian Reservation | District 1 |
| Municipal Boundary | District 2 |
| County Boundary | District 3 |
| | District 4 |
| | District 5 |



COUNTY OF SAN DIEGO

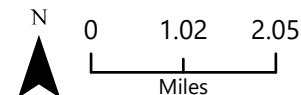
SUPERVISORIAL DISTRICTS - DRAFT MAP 8- 10/21/2021 MEETING

DISTRICT 2



- Supervisorial Districts (2011)
- Military Facility
- Indian Reservation
- Municipal Boundary
- County Boundary

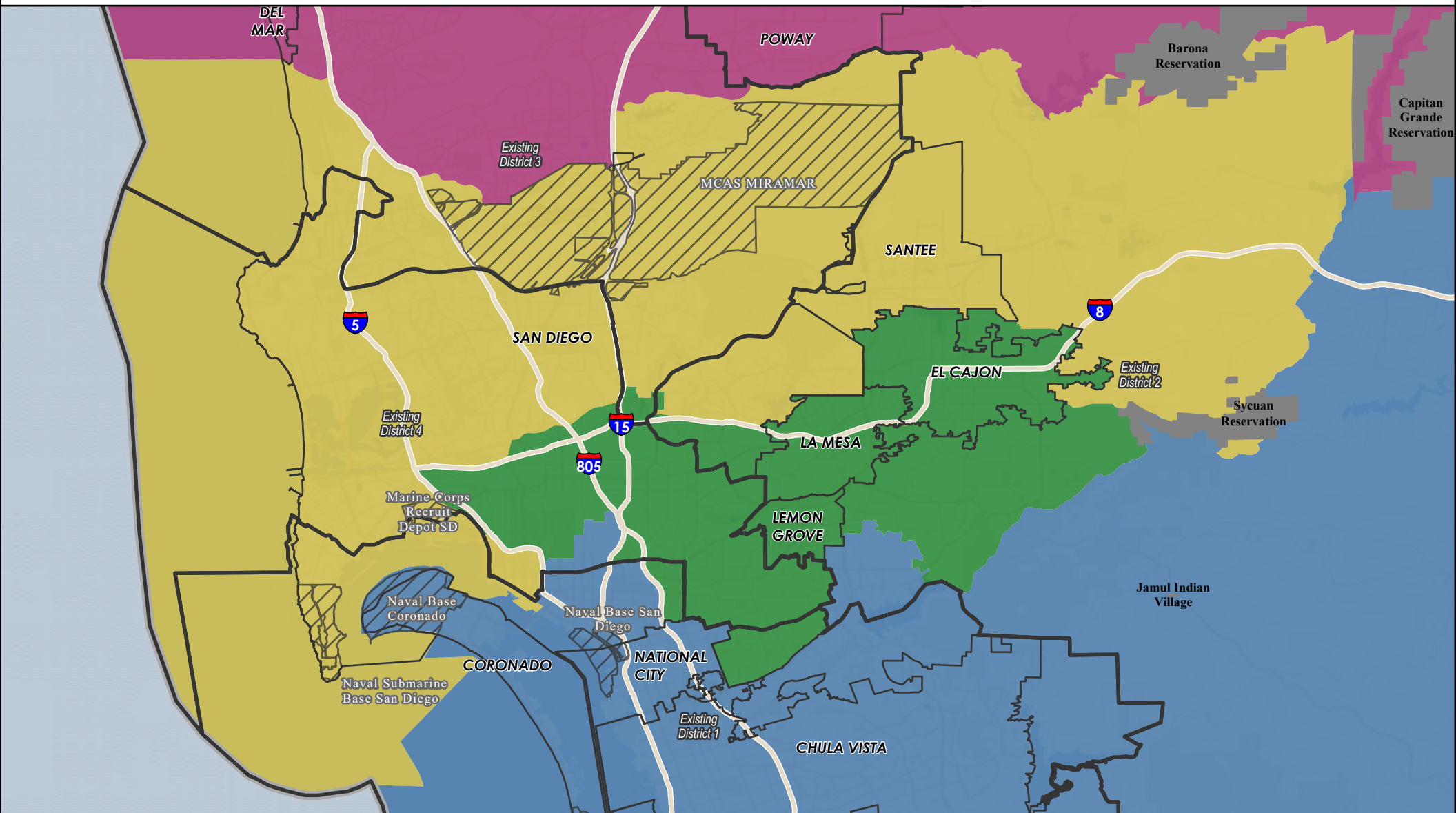
- Draft Map 8
Supervisorial Districts
- District 1
 - District 2
 - District 3
 - District 4
 - District 5



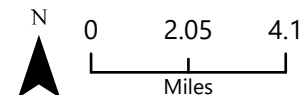
COUNTY OF SAN DIEGO

SUPERVISORIAL DISTRICTS - DRAFT MAP 8- 10/21/2021 MEETING

DISTRICT 3



- | | |
|--------------------------------|--------------------------------|
| Supervisorial Districts (2011) | Draft Map 8 |
| Military Facility | Supervisorial Districts |
| Indian Reservation | District 1 |
| Municipal Boundary | District 2 |
| County Boundary | District 3 |
| | District 4 |
| | District 5 |

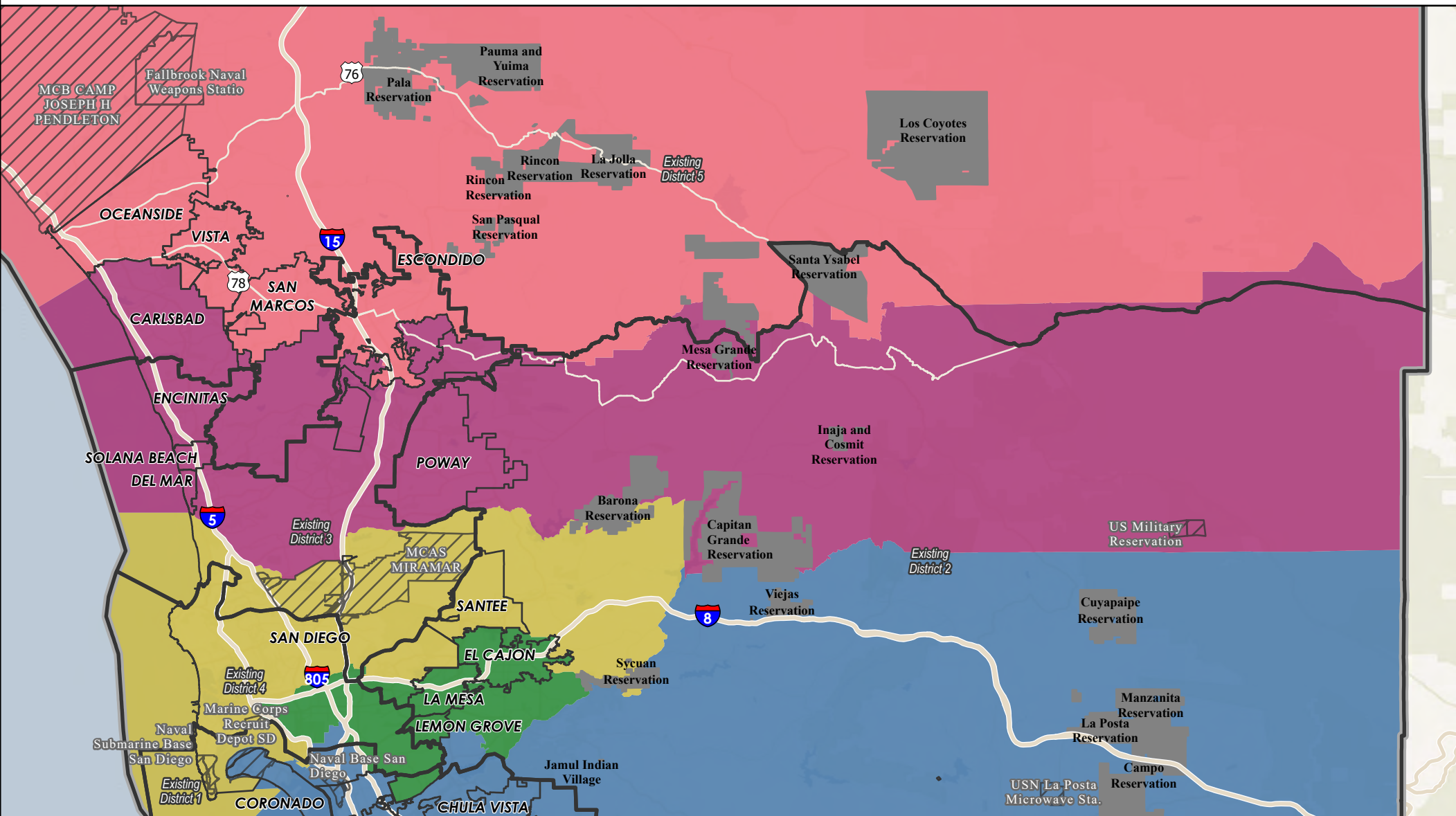


Data obtained from SanGIS Data Warehouse.

COUNTY OF SAN DIEGO

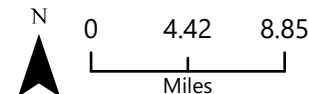
SUPERVISORIAL DISTRICTS - DRAFT MAP 8- 10/21/2021 MEETING

DISTRICT 4



- | | |
|--------------------------------|-------------------------|
| Supervisorial Districts (2011) | Draft Map 8 |
| Military Facility | Supervisorial Districts |
| Indian Reservation | District 1 |
| Municipal Boundary | District 2 |
| County Boundary | District 3 |
| | District 4 |
| | District 5 |

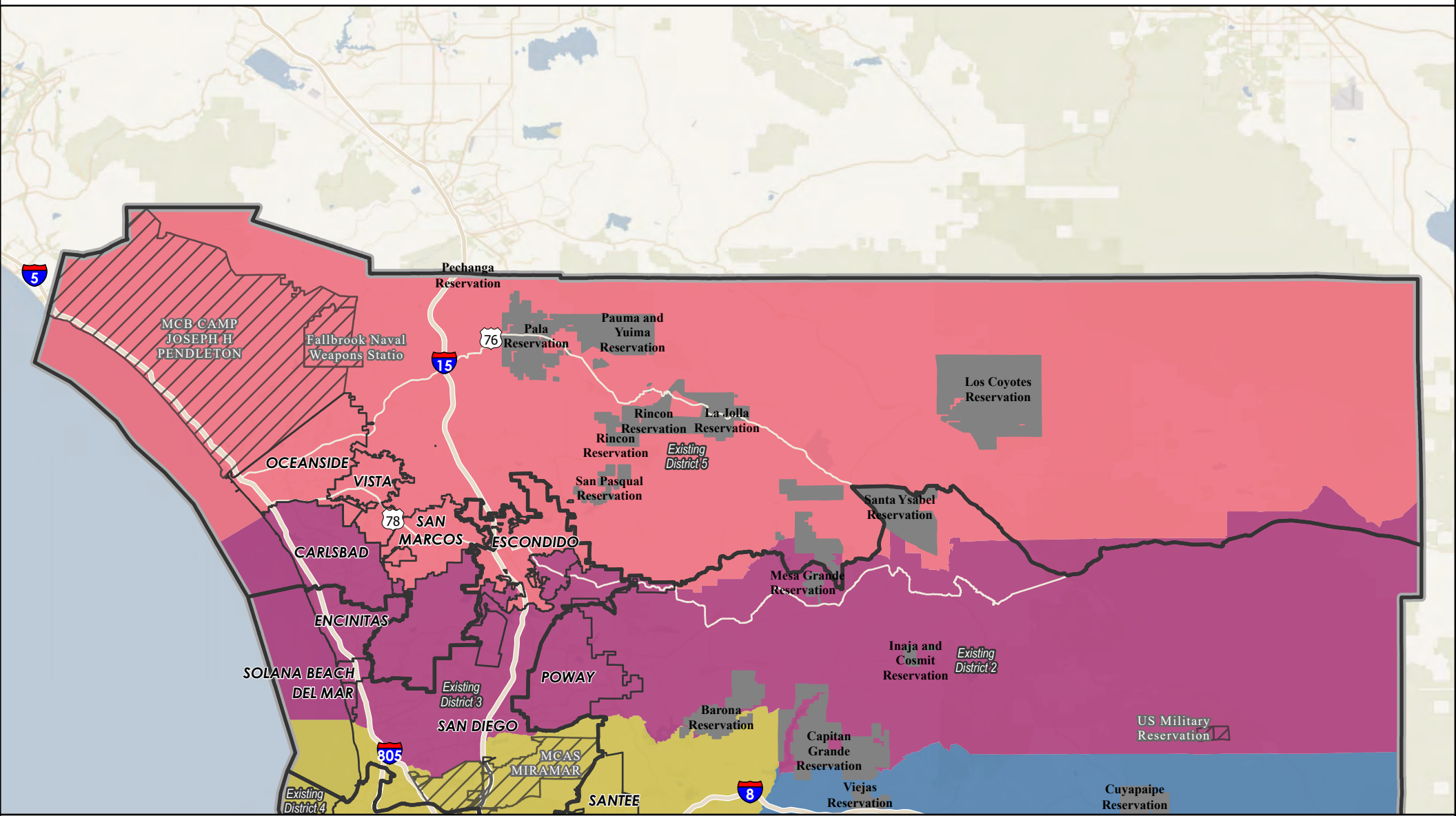
Data obtained from SanGIS Data Warehouse.



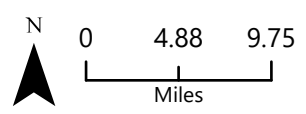
COUNTY OF SAN DIEGO

SUPERVISORIAL DISTRICTS - DRAFT MAP 8- 10/21/2021 MEETING

DISTRICT 5



- | | |
|--------------------------------|--------------------------------|
| Supervisorial Districts (2011) | Draft Map 8 |
| Military Facility | Supervisorial Districts |
| Indian Reservation | District 1 |
| Municipal Boundary | District 2 |
| County Boundary | District 3 |
| | District 4 |
| | District 5 |



Data obtained from SanGIS Data Warehouse.

County of San Diego IRC

Draft Map 8 – Supervisorial Districts Summary Statistics

10/21/2021



Equal Population Criterion

Ideal Population		660,452
Overall Deviation		9.4%
< 5.0%	5.0 - 10.0%	> 10.0%

California Statewide Database Adjusted
(incarcerated persons reallocation) 2020
Census P.L. 94-171 Redistricting Data
Summary Files - Total Population.

Total Population & Deviation per District

District ID	Total Population	Over / Under Ideal	Deviation From Ideal
1	671,916	11,464	1.7%
2	669,236	8,784	1.3%
3	645,990	-14,462	-2.2%
4	626,360	-34,092	-5.2%
5	688,760	28,308	4.3%

Total Population by Race/Ethnicity per District

District ID	White	Black or African American	American Indian or Alaska Native	Asian	Native Hawaiian and Pacific Islander	Some Other Race	Two or More Races	Hispanic/Latino
1	20.4%	4.8%	0.3%	10.8%	0.4%	0.4%	3.5%	59.3%
2	38.7%	9.4%	0.3%	11.3%	0.5%	0.6%	5.0%	34.3%
3	58.9%	3.4%	0.3%	11.0%	0.3%	0.7%	6.2%	19.2%
4	55.7%	1.5%	0.3%	21.7%	0.2%	0.6%	6.1%	13.9%
5	43.3%	2.8%	0.7%	6.7%	0.5%	0.5%	4.6%	41.0%

California Statewide Database (CA SWDB) Adjusted 2020 Census P.L. 94-171 Redistricting Data - Total Population by Race and Hispanic/Latino origin.

VAP by Race/Ethnicity per District

District	White	Black or African American	American Indian or Alaska Native	Asian	Native Hawaiian and Pacific Islander	Some Other Race	Two or More Races	Hispanic/Latino
1	22.8%	5.1%	0.4%	11.6%	0.4%	0.4%	3.0%	56.3%
2	42.0%	9.1%	0.3%	11.9%	0.5%	0.6%	4.4%	31.2%
3	61.2%	3.4%	0.3%	11.7%	0.3%	0.7%	5.1%	17.3%
4	58.6%	1.6%	0.3%	21.8%	0.2%	0.5%	4.5%	12.5%
5	47.4%	3.0%	0.7%	7.2%	0.6%	0.5%	3.9%	36.8%

CA SWDB Adjusted 2020 Census P.L. 94-171 Redistricting Data - Voting-age Population (VAP) by Race and Hispanic/Latino origin.

CVAP by Race/Ethnicity per District

District ID	White	Black or African American	American Indian or Alaska Native	Asian	Native Hawaiian and Pacific Islander	Two or More Races	Hispanic/Latino
1	29.2%	6.1%	0.3%	11.9%	0.5%	2.0%	49.8%
2	48.5%	11.0%	0.2%	10.5%	0.5%	3.1%	26.0%
3	69.1%	3.6%	0.4%	8.8%	0.3%	3.0%	14.7%
4	66.3%	1.8%	0.3%	16.9%	0.3%	2.8%	11.2%
5	56.4%	3.7%	0.9%	6.2%	0.4%	2.6%	29.6%

CA SWDB Adjusted 2015-2019 American Community Survey Citizen Voting-age Population (CVAP) by Race and Ethnicity Special Tabulation. Rounding may lead to summation of percentages not equal to 100% (+/- 1%).

Criteria Specific to the County of San Diego

At least three district shall include unincorporated territory.

Number of districts that include unincorporated territory: **5**

Districts that include unincorporated territory:

District 1

District 2

District 3

District 4

District 5

Two district must be comprised of primarily unincorporated territory.

Number of districts that are primarily unincorporated territory: **3**

Districts that are primarily unincorporated territory:

District 1

District 4

District 5

County of San Diego IRC

Draft Map 8 – Supervisorial Districts Summary Statistics

10/21/2021



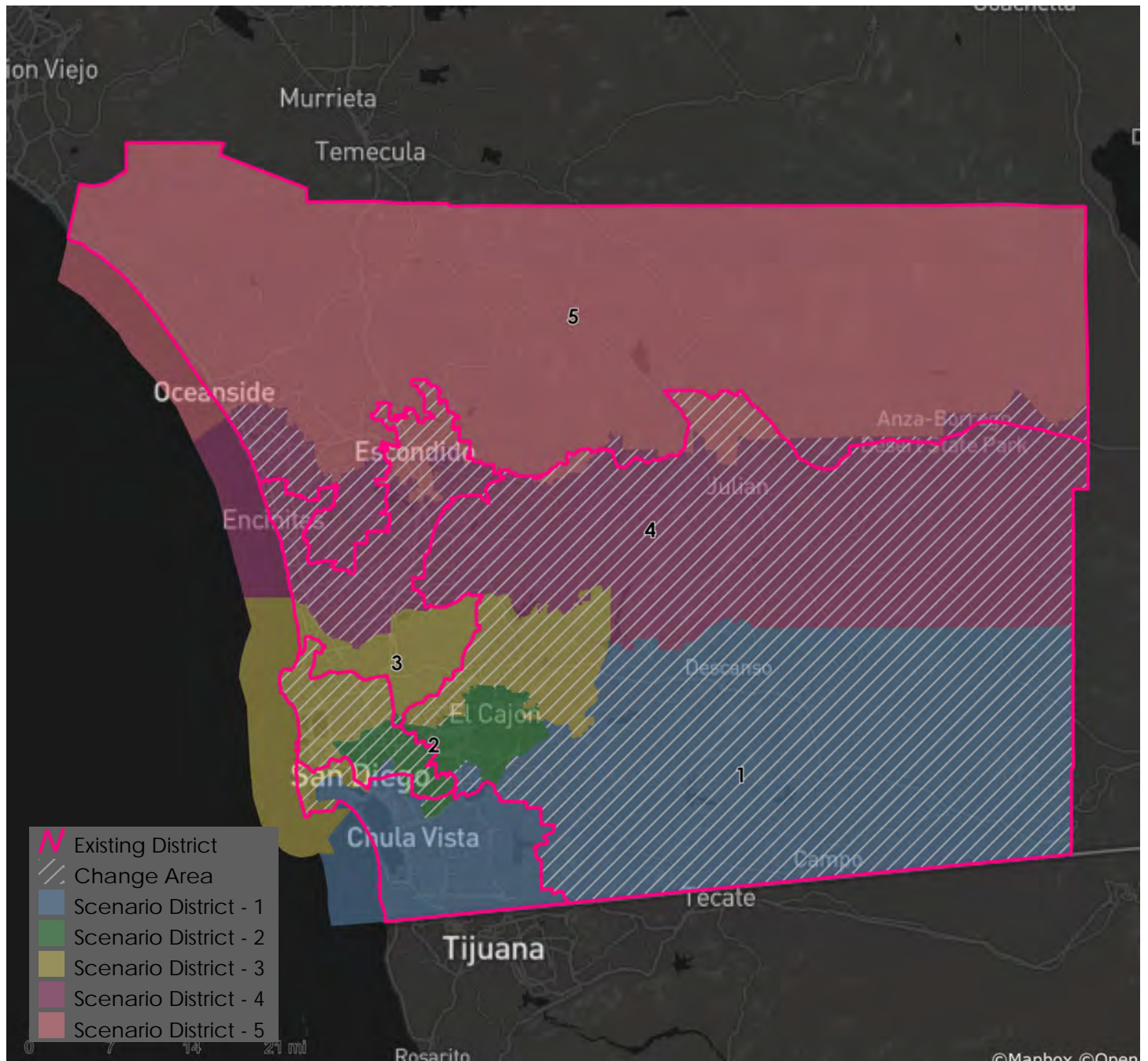
Preservation of Geographic Integrity Criteria (i.e., minimize division of cities, communities of interest, etc.)

COI Category	Total # of COIs	# of COIs Preserved in Minimum Districts	% of COIs Preserved in Minimum Districts	COIs Not Preserved in Minimum # of Districts
Community Builder-submitted COIs	18	12	67%	BIPOC Immigrant & Refugee Communities, BIPOC Immigrant and Refugee, BIPOC, Immigrant & Refugee, I live in North Encanto but a lot of our resources as in La Mesa, Lemon Grove, or in the city., North County San Diego Asian Diaspora, South Bay
Municipalities	26	25	96%	San Diego
Indian Reservations	20	19	95%	Sycuan Reservation
Community Villages	38	35	92%	Lakeside, North County Metro - East, Spring Valley
Community Plan Areas	142	109	77%	Alpine, County Islands, Crest - Dehesa, Cuyamaca, Descanso, Desert, Encanto Neighborhoods, Greater Golden Hill, Julian, Kearny Mesa, Lakeside, Mid-city:City Heights, Midway-pacific Highway, Military Facilities, Miramar Ranch North, Mission Valley, Navajo, North County Metro, North Mountain, North Park, Old Town San Diego, Pine Valley, Ramona, Reserve, San Dieguito, Scripps Miramar Ranch, Spring Valley, Sweetwater, Tierrasanta, Torrey Hills, Torrey Pines, Uptown, Valle De Oro

County of San Diego IRC

Draft Map 8 – Supervisorial Districts Summary Statistics

10/21/2021



Metadata

Run Date/Time:	2021-10-22 22:08:00
Workflow Directory:	X:\F2089_San_Diego_County\Projects\Alteryx\
Feature Class:	File: gdb:X:\F2089_San_Diego_County\Data\Workspace_AB.gdb\Blocks_2020_02
Scenario:	Districts_DraftMap_8