

County of San Diego IRC Approved Mapping Motion 11/1/21

ON MOTION of Commissioner Chen, seconded by Commissioner Surban, the Commission approved the following direction to FLO analytics regarding Draft Map 7:

- Same as Commissioner Surban's Motion except starting with Draft Map 7.

Commission Surban's Motion

ON MOTION of Commissioner Surban, seconded by Commissioner Inman, the Commission approved the following direction to FLO Analytics regarding Draft Map 6:

- From District 4 to District 2: Mira Mesa, Sorrento Valley, Peñasquitos (south of Lake Hodges, west of I-15, north of MCAS Miramar).
- From District 2 to District 4: Tierrasanta, Navajo, Lake Murray, Allied Gardens (south of SR-52, east of I-15, north of I-8).
- From District 1 to District 4: Alpine, Pine Valley.
- From District 2 to District 1: Logan Heights, Sherman Heights, Barrio Logan.
- Generally - preserve COI polygons (identified through public input) and jurisdictional geographies such as municipalities, community planning groups, school districts (ex: Mountain Empire School District). Use Interstate 8 and other highways/ major arterials as corridors rather than boundaries to the extent necessary to do so.
- Tertiary consideration - AAPI COI in District 2 and Latino COI in District 1/ District 5/District 3 (in that order).

Please note the district numbers in this map do not correspond to the numbers of existing supervisorial districts. District numbers from prior IRC draft maps have been adjusted to more closely align with population density of existing district boundaries to the extent possible.

COUNTY OF SAN DIEGO SUPERVISORIAL DISTRICTS DRAFT MAP 12A - 11/1/2021 MEETING



Legend

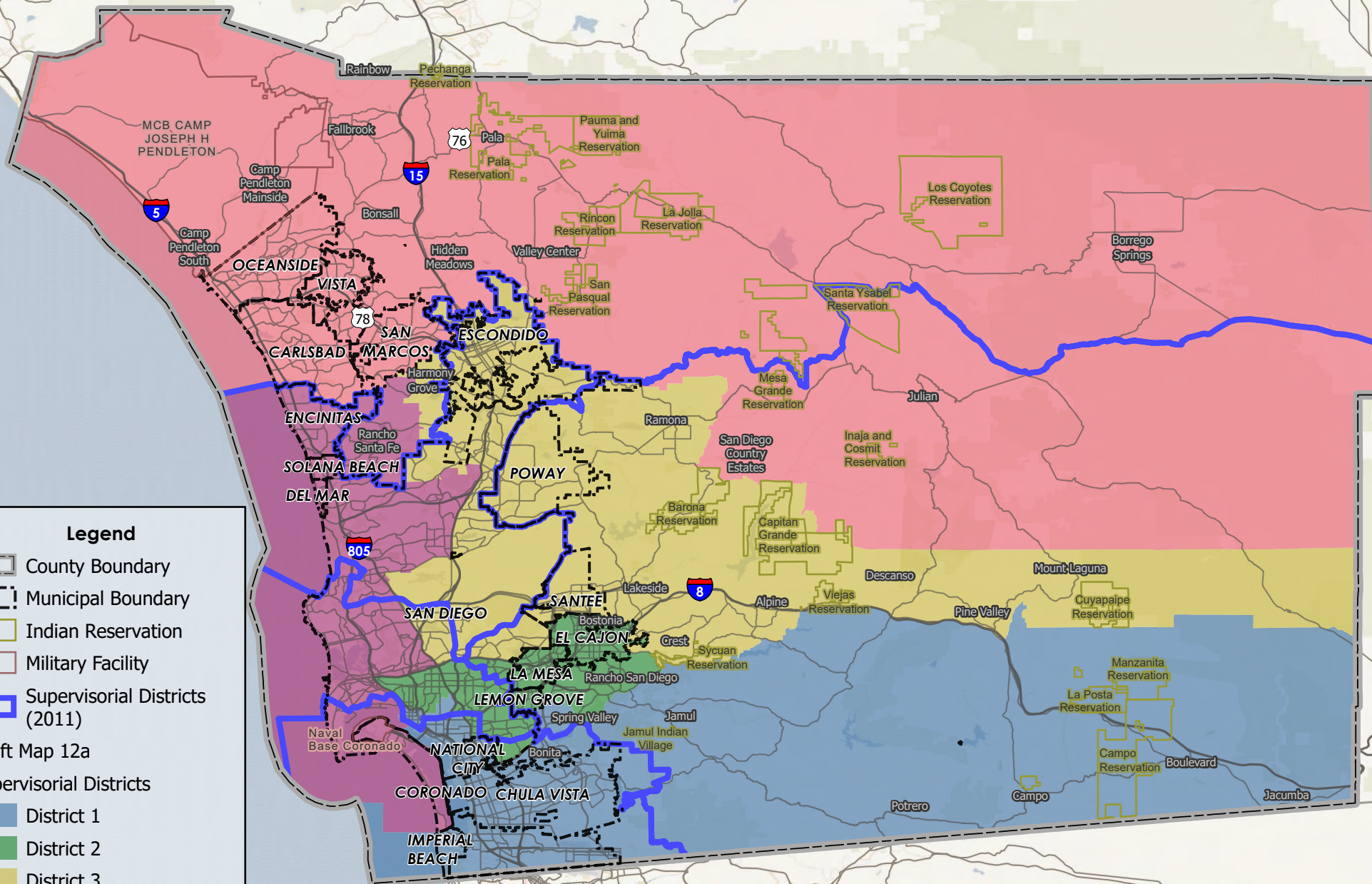
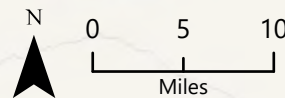
- County Boundary
- Municipal Boundary
- Indian Reservation
- Military Facility
- Supervisory Districts (2011)

Draft Map 12a

Supervisory Districts

- District 1
- District 2
- District 3
- District 4
- District 5

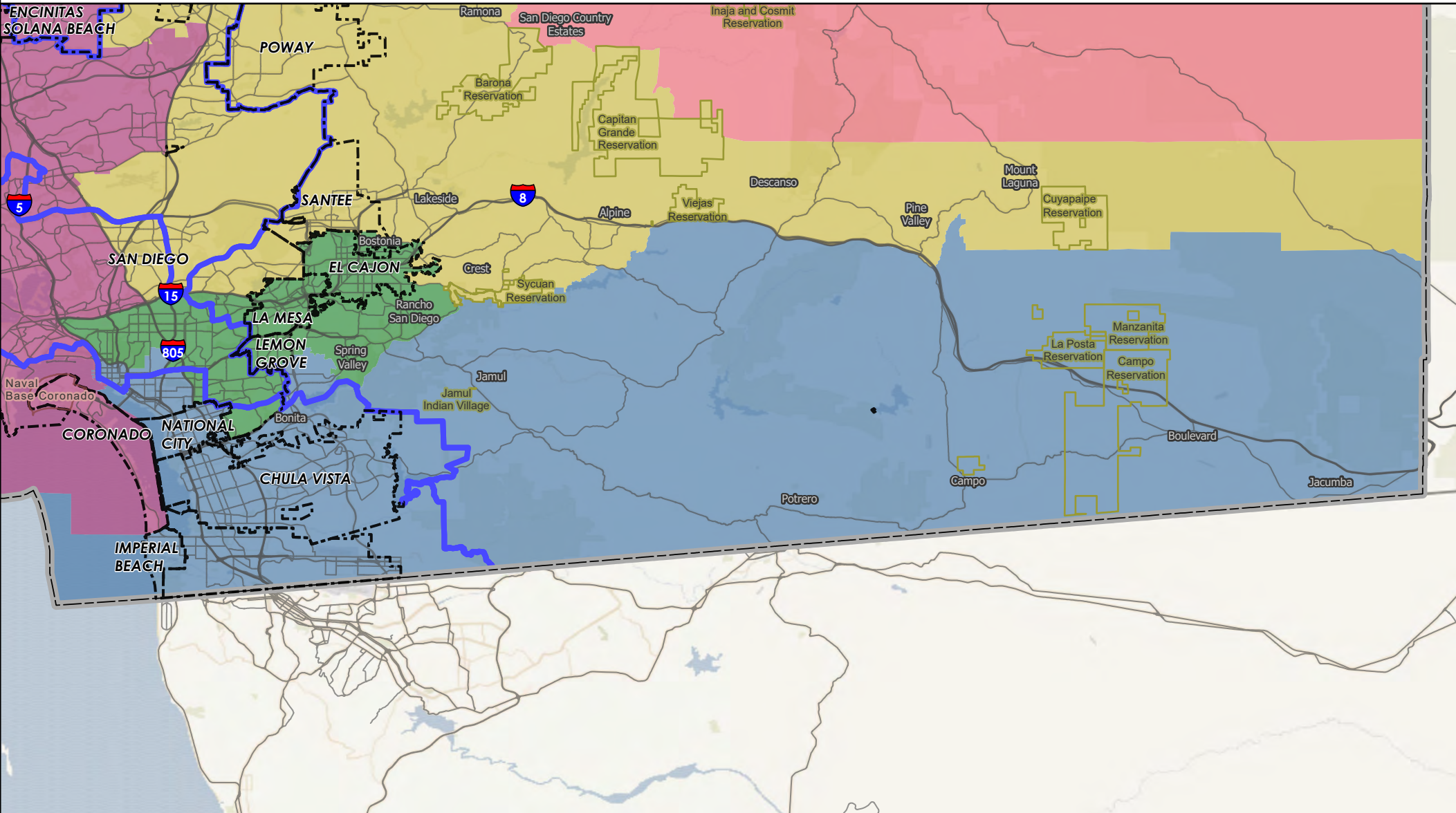
Data obtained from SanGIS Data Warehouse.



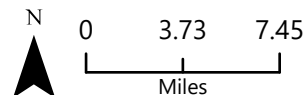
COUNTY OF SAN DIEGO

SUPERVISORIAL DISTRICTS - DRAFT MAP 12A - 11/1/2021 MEETING

DISTRICT 1



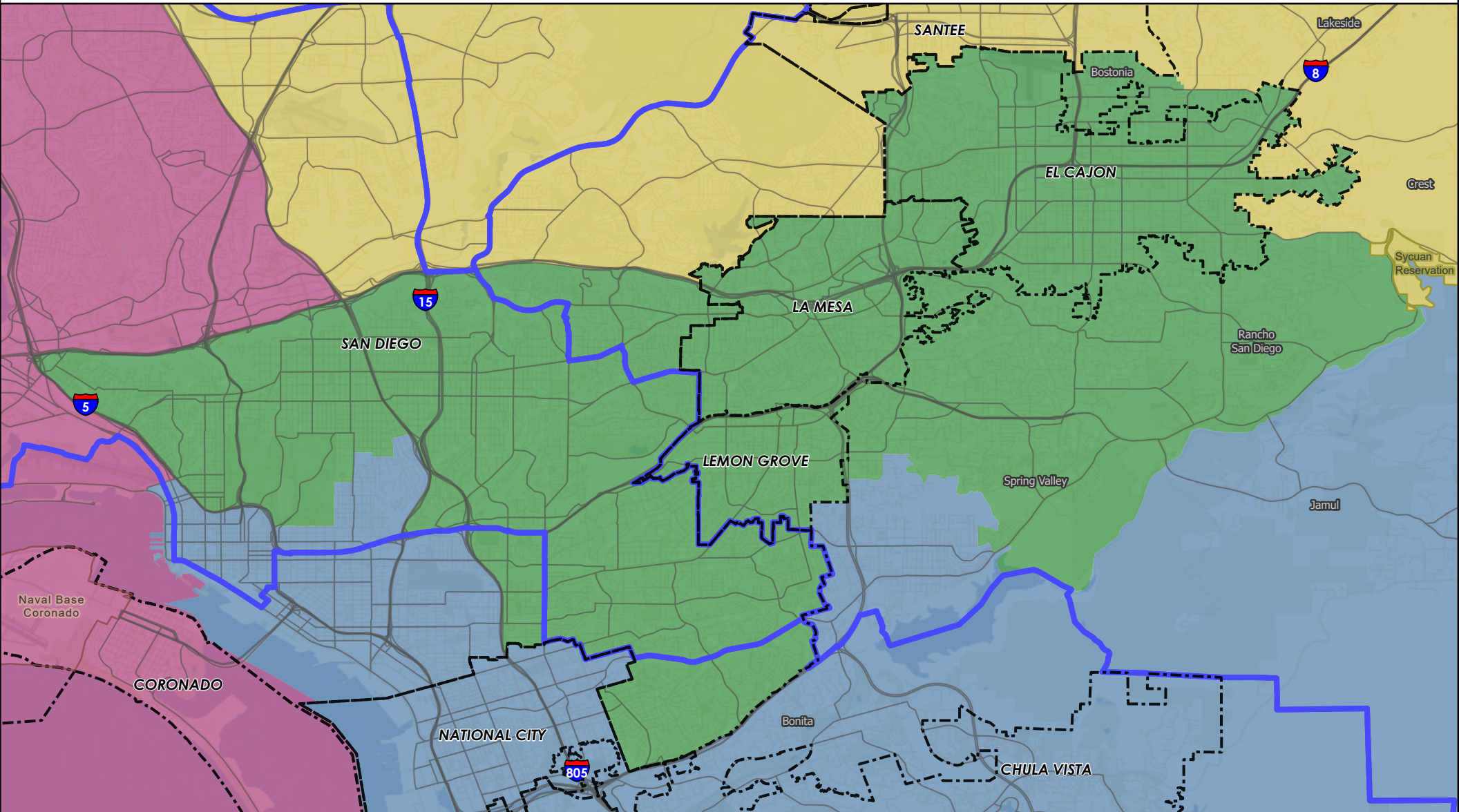
- | | |
|--------------------------------|-------------------------|
| County Boundary | Draft Map 12a |
| Municipal Boundary | Supervisorial Districts |
| Indian Reservation | District 1 |
| Military Facility | District 2 |
| Supervisorial Districts (2011) | District 3 |
| | District 4 |
| | District 5 |



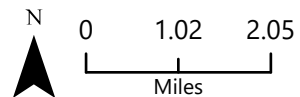
COUNTY OF SAN DIEGO

SUPERVISORIAL DISTRICTS - DRAFT MAP 12A - 11/1/2021 MEETING

DISTRICT 2



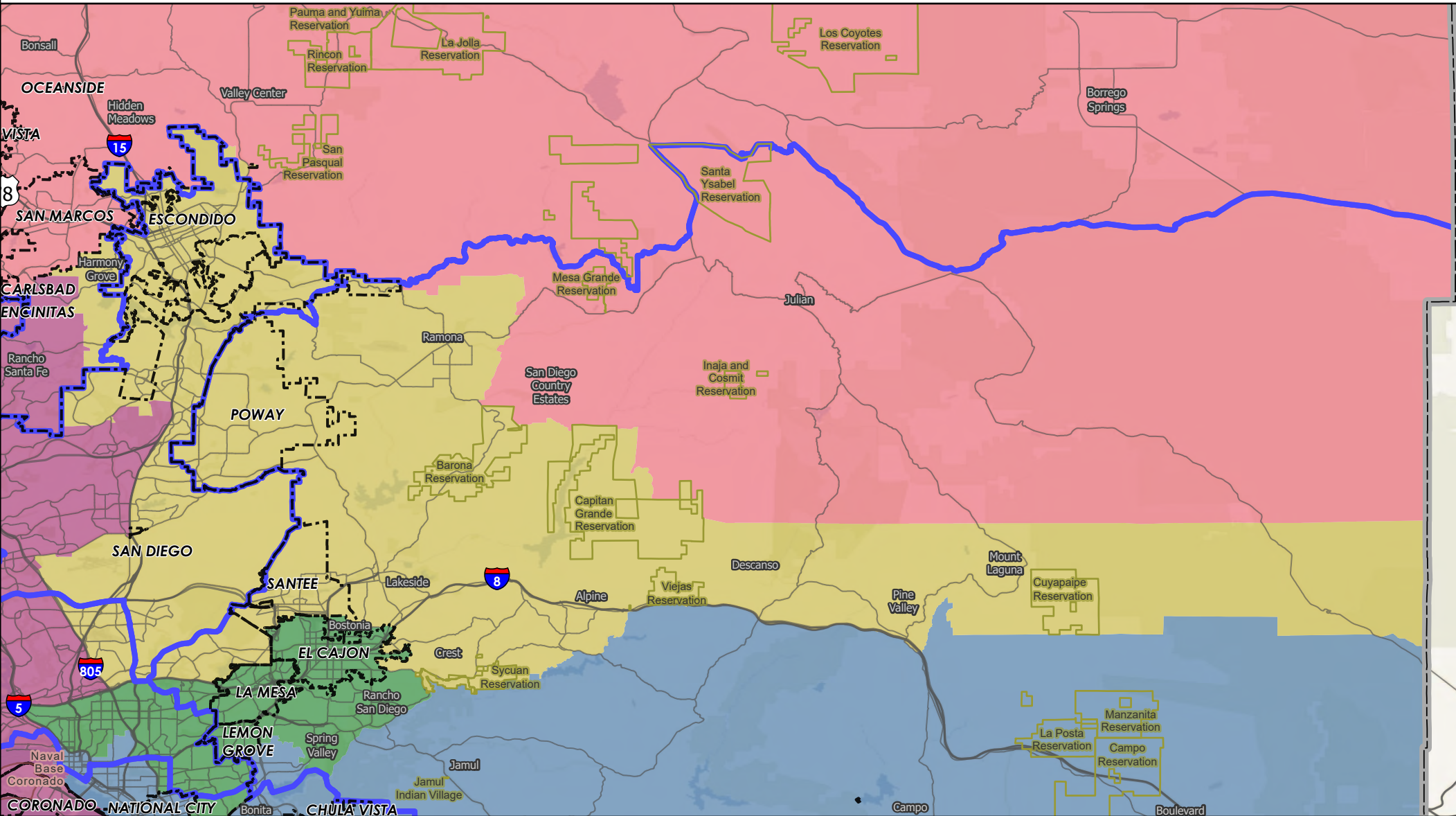
- | | |
|--------------------------------|-------------------------|
| County Boundary | Draft Map 12a |
| Municipal Boundary | Supervisorial Districts |
| Indian Reservation | District 1 |
| Military Facility | District 2 |
| Supervisorial Districts (2011) | District 3 |
| | District 4 |
| | District 5 |



COUNTY OF SAN DIEGO

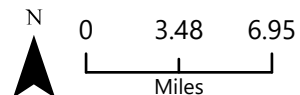
SUPERVISORIAL DISTRICTS - DRAFT MAP 12A - 11/1/2021 MEETING

DISTRICT 3



- County Boundary
- Municipal Boundary
- Indian Reservation
- Military Facility
- Supervisorial Districts (2011)

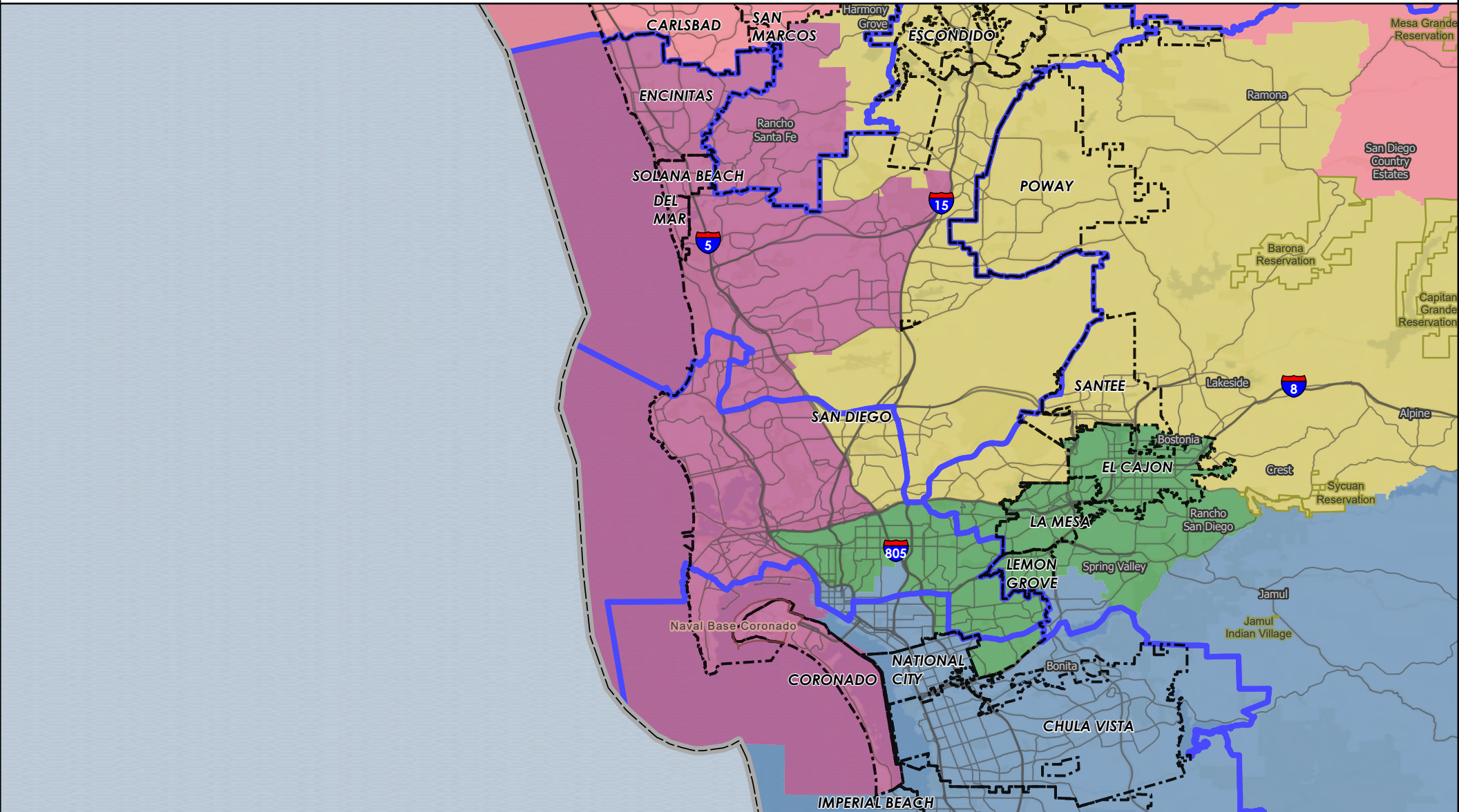
- Draft Map 12a
Supervisorial Districts
- District 1
 - District 2
 - District 3
 - District 4
 - District 5



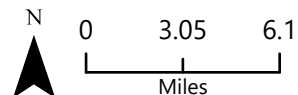
COUNTY OF SAN DIEGO

SUPERVISORIAL DISTRICTS - DRAFT MAP 12A - 11/1/2021 MEETING

DISTRICT 4



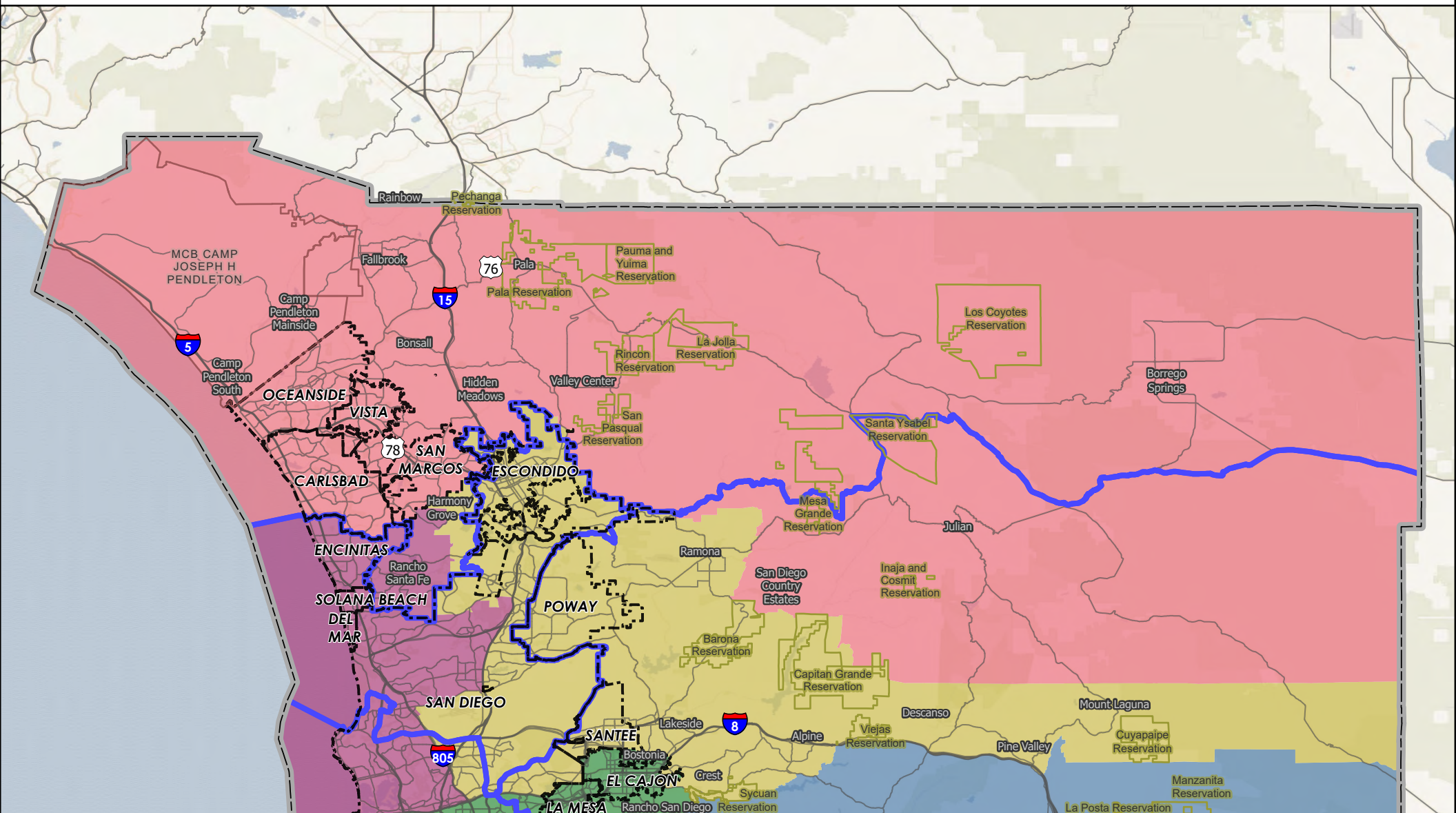
- | | |
|--------------------------------|-------------------------|
| County Boundary | Draft Map 12a |
| Municipal Boundary | Supervisorial Districts |
| Indian Reservation | District 1 |
| Military Facility | District 2 |
| Supervisorial Districts (2011) | District 3 |
| | District 4 |
| | District 5 |



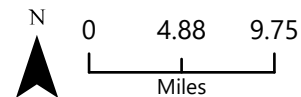
COUNTY OF SAN DIEGO

SUPERVISORIAL DISTRICTS - DRAFT MAP 12A - 11/1/2021 MEETING

DISTRICT 5



- | | |
|--------------------------------|-------------------------|
| County Boundary | Draft Map 12a |
| Municipal Boundary | Supervisorial Districts |
| Indian Reservation | District 1 |
| Military Facility | District 2 |
| Supervisorial Districts (2011) | District 3 |
| | District 4 |
| | District 5 |



Equal Population Criterion

Ideal Population		660,452
Overall Deviation		3.7%
< 5.0%	5.0 - 10.0%	> 10.0%

California Statewide Database Adjusted
(incarcerated persons reallocation) 2020
Census P.L. 94-171 Redistricting Data
Summary Files - Total Population.

Total Population & Deviation per District

District ID	Total Population	Over / Under Ideal	Deviation From Ideal
1	673,604	13,152	2.0%
2	649,434	-11,018	-1.7%
3	661,511	1,059	0.2%
4	651,640	-8,812	-1.3%
5	666,073	5,621	0.9%

Total Population by Race/Ethnicity per District

District ID	White	Black or African American	American Indian or Alaska Native	Asian	Native Hawaiian and Pacific Islander	Some Other Race	Two or More Races	Hispanic/Latino
1	19.6%	5.1%	0.3%	11.2%	0.4%	0.5%	3.5%	59.4%
2	38.5%	9.3%	0.3%	11.2%	0.5%	0.6%	5.0%	34.6%
3	52.0%	2.8%	0.5%	12.2%	0.3%	0.6%	5.8%	25.9%
4	55.3%	2.4%	0.2%	19.7%	0.2%	0.7%	6.0%	15.5%
5	50.5%	2.6%	0.7%	6.5%	0.6%	0.5%	5.0%	33.5%

California Statewide Database (CA SWDB) Adjusted 2020 Census P.L. 94-171 Redistricting Data - Total Population by Race and Hispanic/Latino origin.

VAP by Race/Ethnicity per District

District	White	Black or African American	American Indian or Alaska Native	Asian	Native Hawaiian and Pacific Islander	Some Other Race	Two or More Races	Hispanic/Latino
1	22.4%	5.4%	0.3%	12.0%	0.4%	0.4%	3.0%	56.1%
2	41.8%	9.1%	0.3%	11.9%	0.5%	0.5%	4.3%	31.5%
3	55.7%	2.8%	0.5%	12.4%	0.3%	0.5%	4.6%	23.2%
4	57.6%	2.4%	0.2%	20.0%	0.2%	0.6%	4.8%	14.2%
5	54.2%	2.8%	0.7%	7.0%	0.6%	0.5%	4.1%	30.2%

CA SWDB Adjusted 2020 Census P.L. 94-171 Redistricting Data - Voting-age Population (VAP) by Race and Hispanic/Latino origin.

CVAP by Race/Ethnicity per District

District ID	White	Black or African American	American Indian or Alaska Native	Asian	Native Hawaiian and Pacific Islander	Two or More Races	Hispanic/Latino
1	27.6%	6.6%	0.2%	12.3%	0.6%	2.1%	50.4%
2	48.3%	11.0%	0.2%	10.7%	0.5%	3.0%	26.1%
3	65.0%	3.0%	0.5%	9.9%	0.3%	3.1%	18.1%
4	65.6%	2.8%	0.2%	15.1%	0.3%	2.9%	12.8%
5	62.2%	3.3%	0.8%	5.9%	0.4%	2.4%	24.8%

CA SWDB Adjusted 2015-2019 American Community Survey Citizen Voting-age Population (CVAP) by Race and Ethnicity Special Tabulation. Rounding may lead to summation of percentages not equal to 100% (+/- 1%).

Criteria Specific to the County of San Diego

At least three districts shall include unincorporated territory.

Number of districts that include unincorporated territory: **5**

Districts that include unincorporated territory:

District 1

District 2

District 3

District 4

District 5

Two districts must be comprised of primarily unincorporated territory.

Number of districts that are primarily unincorporated territory: **3**

Districts that are primarily unincorporated territory:

District 1

District 3

District 5

Preservation of Geographic Integrity Criteria (i.e., minimize division of cities, communities of interest, etc.)

COI Category	Total # of COIs	# of COIs Preserved in Minimum Districts	% of COIs Preserved in Minimum Districts	COIs Not Preserved in Minimum # of Districts
Community Builder spatial-submitted COIs	20	8	40%	78 Cooridor, AAPI communities, BIPOC Immigrant & Refugee Communities, BIPOC Immigrant and Refugee, BIPOC, Immigrant & Refugee, Carlsbad and North County neighbors, I live in North Encanto but a lot of our resources as in La Mesa, Lemon Grove, or in the city., Inland North County, North County San Diego Asian Diaspora, South Bay, Twin Oaks Valley, Valley Center
Municipalities	18	17	94%	San Diego
Census Designated Places	39	38	97%	Rancho San Diego Cdp
Indian Reservations	19	19	100%	
Military Installations	22	21	95%	Mcas Miramar
Community Plan Areas (City of San Diego)	57	52	91%	Military Facilities, Mission Valley, North Park, Reserve, Serra Mesa
Community Plan Areas (Non-City of San Diego)	36	20	56%	Alpine, Central Mountain, County Islands, Crest - Dehesa, Cuyamaca, Descanso, Desert, Hidden Meadows, Lakeside, Mountain Empire, North County Metro, Pine Valley, Ramona, San Dieguito, Spring Valley, Valle De Oro
Elementary School Districts	24	11	46%	Gen Bond Solana Beach-sfid2016-1a Meas Jj 11/08/16, Gen Elem Alpine Union, Gen Elem Cajon Valley Union, Gen Elem Dehesa, Gen Elem Encinitas Union, Gen Elem Escondido Union, Gen Elem Julian Union, Gen Elem La Mesa-spring Valley, Gen Elem National, Gen Elem Rancho Santa Fe, Gen Elem San Pasqual Union, Gen Elem Santee, Gen Elem South Bay Union
High School Districts	6	1	17%	High Escondido Union, High Grossmont Union, High Julian Union, High San Dieguito Union, High Sweetwater Union
Unified School Districts	15	7	47%	Unif Bond Poway-sfid 2002-1, Prop U 11/5/02, 2019ref, Unif Bond San Marcos Sfid #1-6/04/96, 2004-1 Ref, Unified Mt Empire, Unified Poway, Unified Ramona, Unified San Diego, Unified San Marcos, Unified Valley Center-pauma
Fire Districts	13	8	62%	Alpine Fire Protection District, Lakeside Fire Protection District, Rancho Santa Fe Fire Protection Dist. Of Sd County, San Marcos Fire Protection District, San Miguel Consol. Fire Protection District

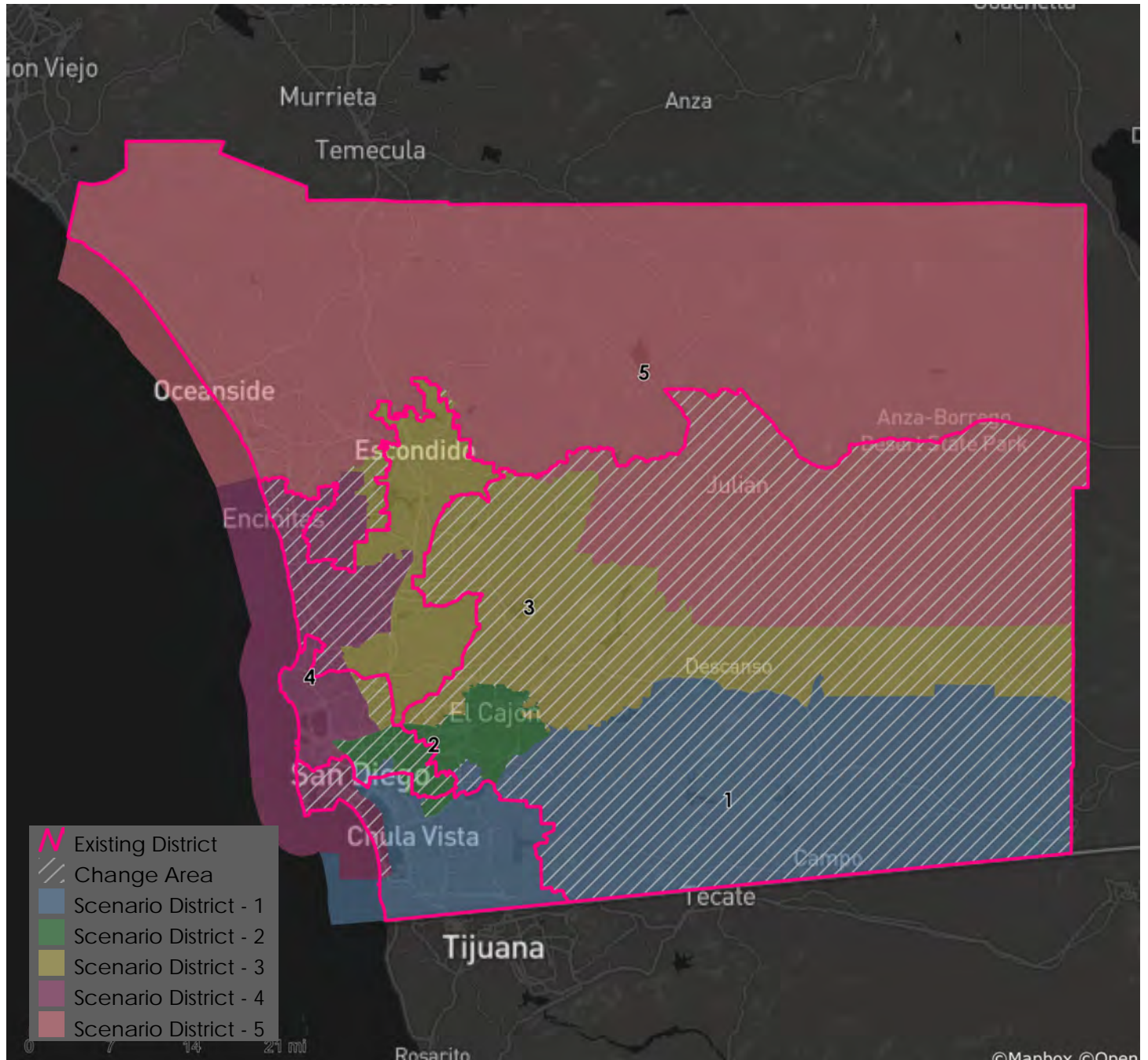
County of San Diego IRC

Draft Map 12a – Supervisorial Districts Summary Statistics

11/1/2021



COI Category	Total # of COIs	# of COIs Preserved in Minimum Districts	% of COIs Preserved in Minimum Districts	COIs Not Preserved in Minimum # of Districts
Public Utility Districts	2	2	100%	
Sanitation Districts	4	3	75%	San Diego County Sanitation District L&I
Water Districts	50	31	62%	Helix Water District Land, Helix Water District - Special Area Land, Leucadia Wastewater District, Olivenhain Municipal Water District, Otay Water District, Padre Dam Muni Water Imp Dist #1 (Eastern Portion), Padre Dam Muni Water Imp Dist B, Padre Dam Municipal Water District, Questhaven Municipal Water District, Ramona Municipal Water District, Rincon Del Diablo Muni Id.E (Formerly F&G), Rincon Del Diablo Municipal Water District, San Dieguito Water District Land, South Bay Irrigation Land, Vallecitos Water District, Vallecitos Water Imp Dist No 5 - Sewer Service, Vallecitos Water Imp Dist No 6 - Sewer Service, Valley Center Municipal Water District, Vista Irrigation Land



Metadata

Run Date/Time: 2021-11-08 14:17:03
 Workflow Directory: X:\F2089_San_Diego_County\Projects\Alteryx\
 Feature Class: File: gdb:X:\F2089_San_Diego_County\Data\Workspace_AB.gdb\Blocks_2020_02
 Scenario: Districts_DraftMap_12