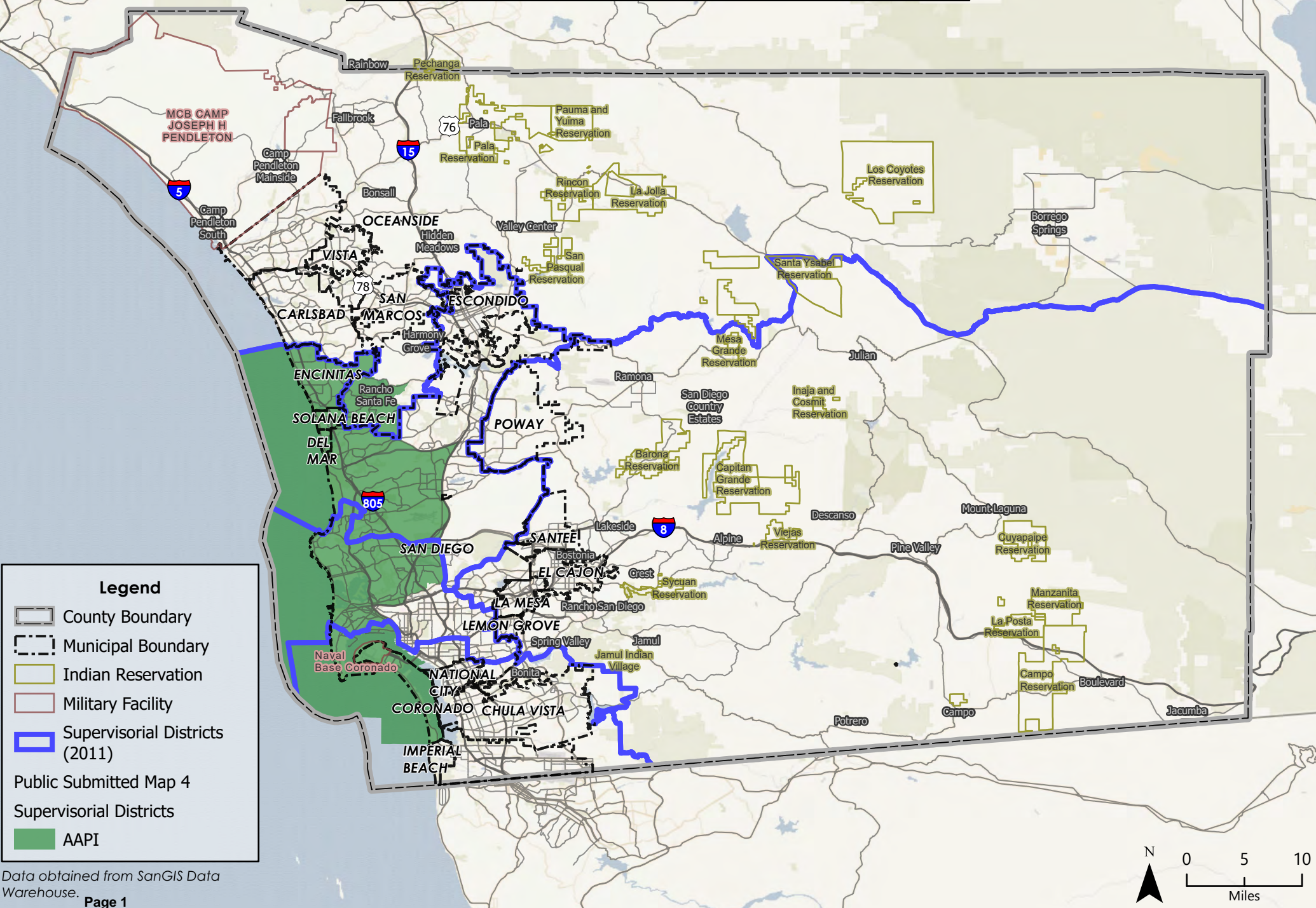


# COUNTY OF SAN DIEGO SUPERVISORIAL DISTRICTS PUBLIC SUBMITTED MAP 4



Legend

County Boundary

Municipal Boundary

Indian Reservation

Military Facility

Supervisorial Districts (2011)

AAPI

Public Submitted Map 4

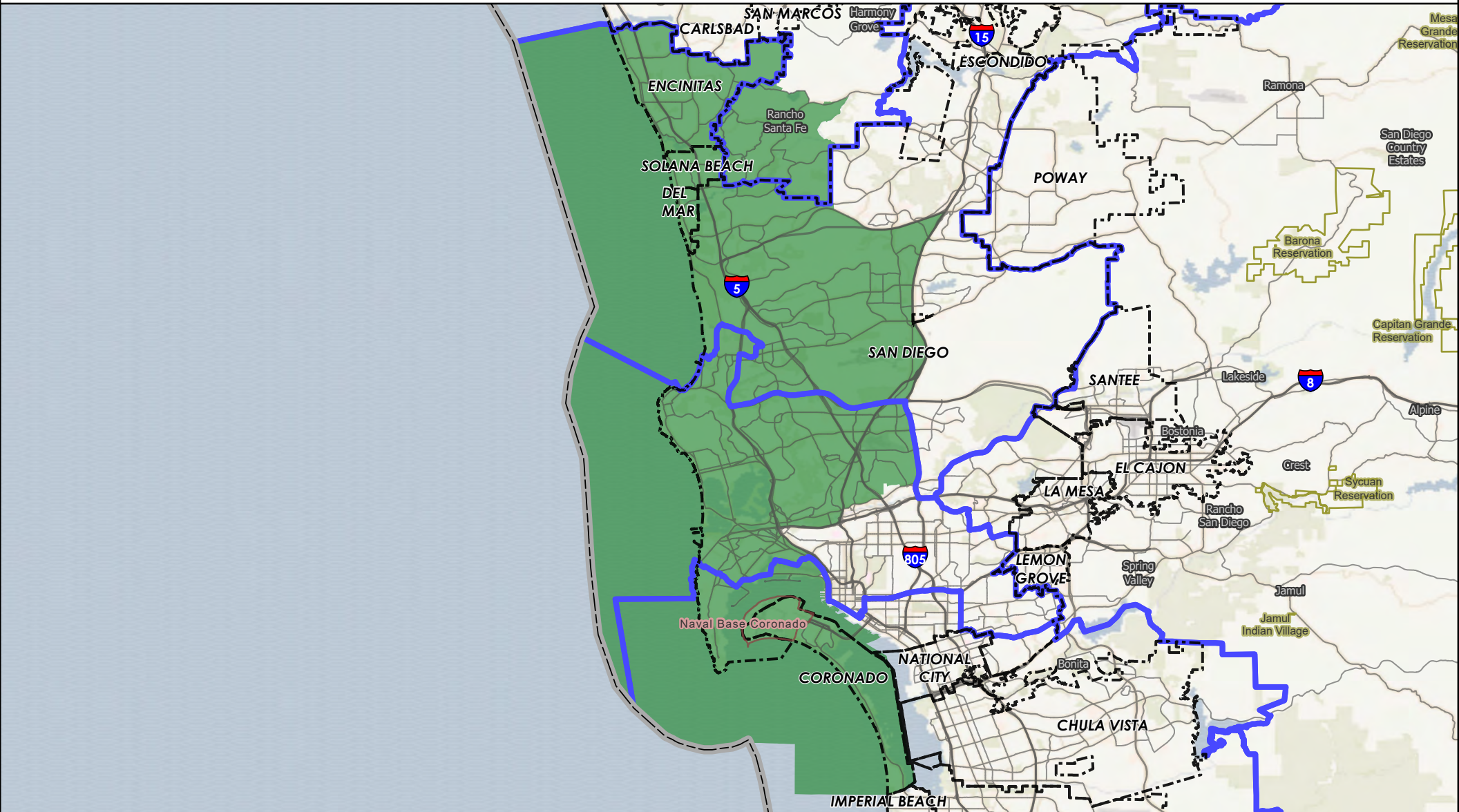
Supervisorial Districts



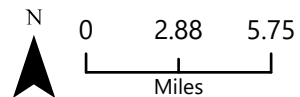
# COUNTY OF SAN DIEGO

## SUPERVISORIAL DISTRICTS - PUBLIC SUBMITTED MAP 4

### DISTRICT AAPI



- |                                |                         |
|--------------------------------|-------------------------|
| County Boundary                | Public Submitted Map 4  |
| Municipal Boundary             | Supervisorial Districts |
| Indian Reservation             | AAPI                    |
| Military Facility              |                         |
| Supervisorial Districts (2011) |                         |



### Equal Population Criterion

Ideal Population	660,452	
Overall Deviation	—	
< 5.0%	5.0 - 10.0%	> 10.0%

### Total Population & Deviation per District

District ID	Total Population	Over / Under Ideal	Deviation From Ideal
	1,998,379	1,337,927	202.6%
AAPI	643,431	-17,021	-2.6%

California Statewide Database Adjusted  
(incarcerated persons reallocation) 2020  
Census P.L. 94-171 Redistricting Data  
Summary Files - Total Population.

### Total Population by Race/Ethnicity per District

District ID	White	Black or African American	American Indian or Alaska Native	Asian	Native Hawaiian and Pacific Islander	Some Other Race	Two or More Races	Hispanic/Latino
	40.2%	4.9%	0.4%	10.5%	0.4%	0.5%	4.8%	38.3%
AAPI	55.2%	2.6%	0.2%	18.9%	0.3%	0.7%	6.0%	16.1%

California Statewide Database (CA SWDB) Adjusted 2020 Census P.L. 94-171 Redistricting Data - Total Population by Race and Hispanic/Latino origin.

### VAP by Race/Ethnicity per District

District	White	Black or African American	American Indian or Alaska Native	Asian	Native Hawaiian and Pacific Islander	Some Other Race	Two or More Races	Hispanic/Latino
	43.5%	5.0%	0.4%	11.0%	0.4%	0.5%	4.0%	35.1%
AAPI	57.5%	2.6%	0.2%	19.2%	0.3%	0.6%	4.8%	14.8%

CA SWDB Adjusted 2020 Census P.L. 94-171 Redistricting Data - Voting-age Population (VAP) by Race and Hispanic/Latino origin.

### CVAP by Race/Ethnicity per District

District ID	White	Black or African American	American Indian or Alaska Native	Asian	Native Hawaiian and Pacific Islander	Two or More Races	Hispanic/Latino
	51.2%	5.9%	0.4%	9.8%	0.4%	2.7%	29.4%
AAPI	65.7%	3.0%	0.2%	14.6%	0.3%	2.9%	13.1%



---

CA SWDB Adjusted 2015-2019 American Community Survey Citizen Voting-age Population (CVAP) by Race and Ethnicity Special Tabulation. Rounding may lead to summation of percentages not equal to 100% (+/- 1%).

### **Criteria Specific to the County of San Diego**

**At least three district shall include unincorporated territory.**

Number of districts that include unincorporated territory: **2**

Districts that include unincorporated territory:

#### **District**

##### **District AAPI**

**Two district must be comprised of primarily unincorporated territory.**

Number of districts that are primarily unincorporated territory: **1**

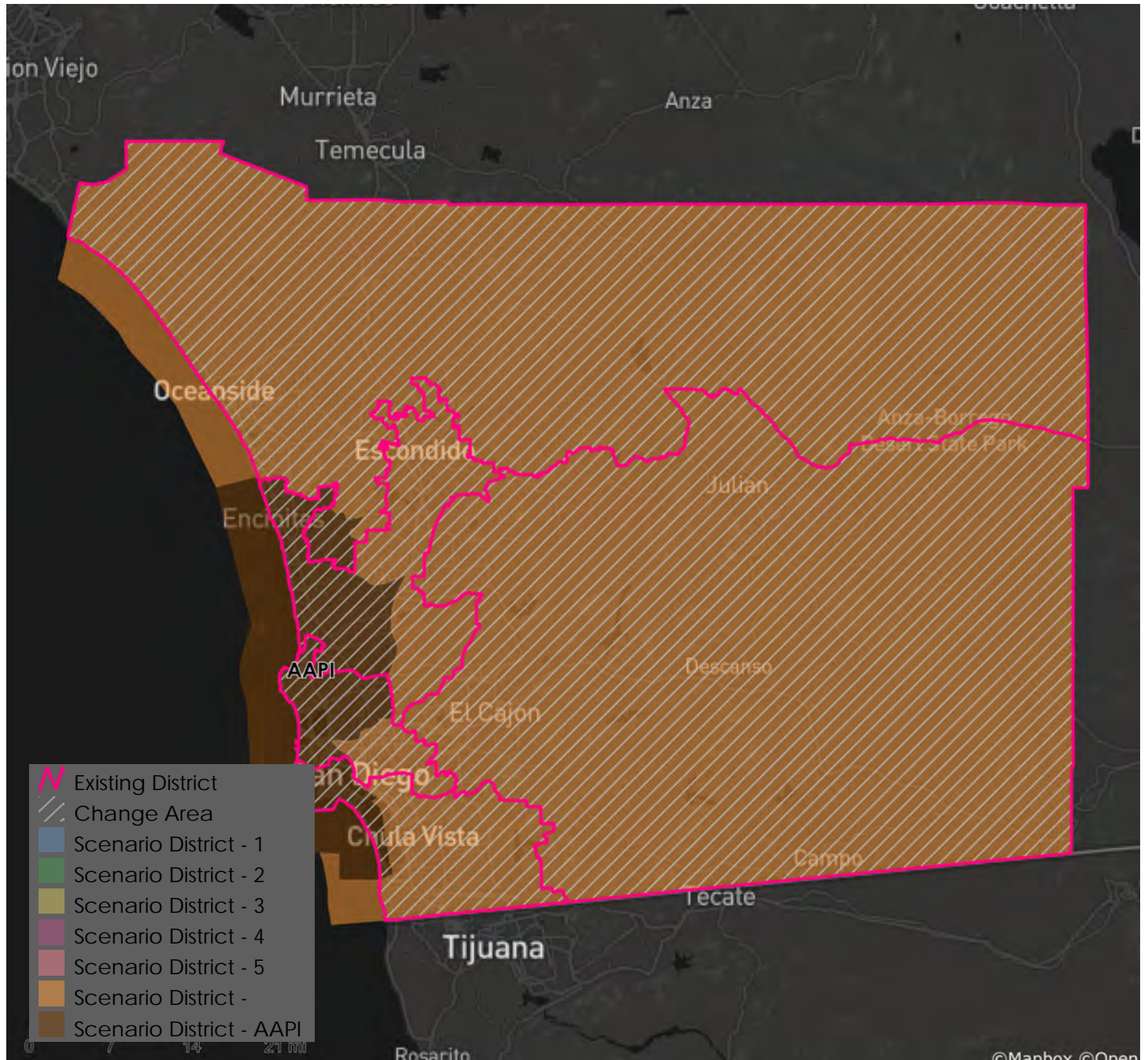
Districts that are primarily unincorporated territory:

#### **District**

### Preservation of Geographic Integrity Criteria (i.e., minimize division of cities, communities of interest, etc.)

COI Category	Total # of COIs	# of COIs Preserved in Minimum Districts	% of COIs Preserved in Minimum Districts	COIs Not Preserved in Minimum # of Districts
Community Builder-submitted COIs	20	17	85%	78 Cooridor, Carlsbad and North County neighbors, North County
Municipalities	26	23	88%	Carlsbad, National City, San Diego
Indian Reservations	20	20	100%	
Community Villages	38	38	100%	
Community Plan Areas	142	133	94%	County Islands, Downtown, Military Facilities, Miramar Ranch North, Mission Valley, Rancho Penasquitos, Reserve, San Dieguito, Torrey Highlands





### Metadata

Run Date/Time: 2021-11-02 13:47:25  
 Workflow Directory: X:\F2089\_San\_Diego\_County\Projects\Alteryx\  
 Feature Class: File: gdb:X:\F2089\_San\_Diego\_County\Data\Workspace\_AB.gdb\Blocks\_2020\_02  
 Scenario: Districts\_PubSub\_AAPI