

COUNTY OF SAN DIEGO SUPERVISORIAL DISTRICTS PUBLIC SUBMITTED MAP 5



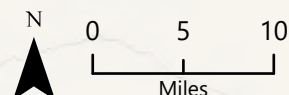
Legend

- County Boundary
- Municipal Boundary
- Indian Reservation
- Military Facility
- Supervisory Districts (2011)

Public Submitted Map 5

Supervisory Districts

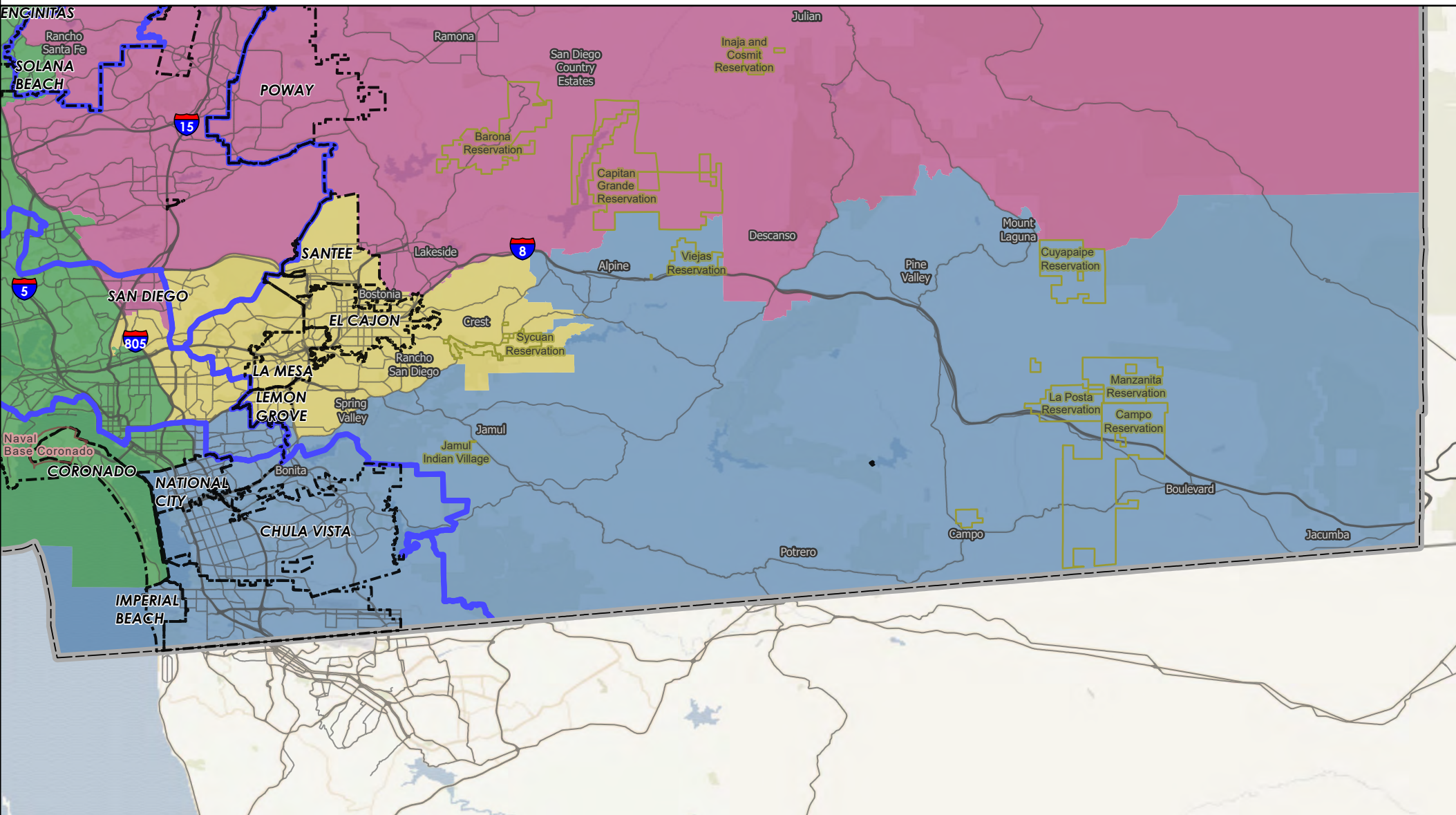
- District 1
- District 2
- District 3
- District 4
- District 5



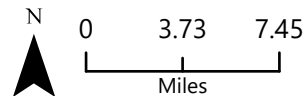
COUNTY OF SAN DIEGO

SUPERVISORIAL DISTRICTS - PUBLIC SUBMITTED MAP 5

DISTRICT 1



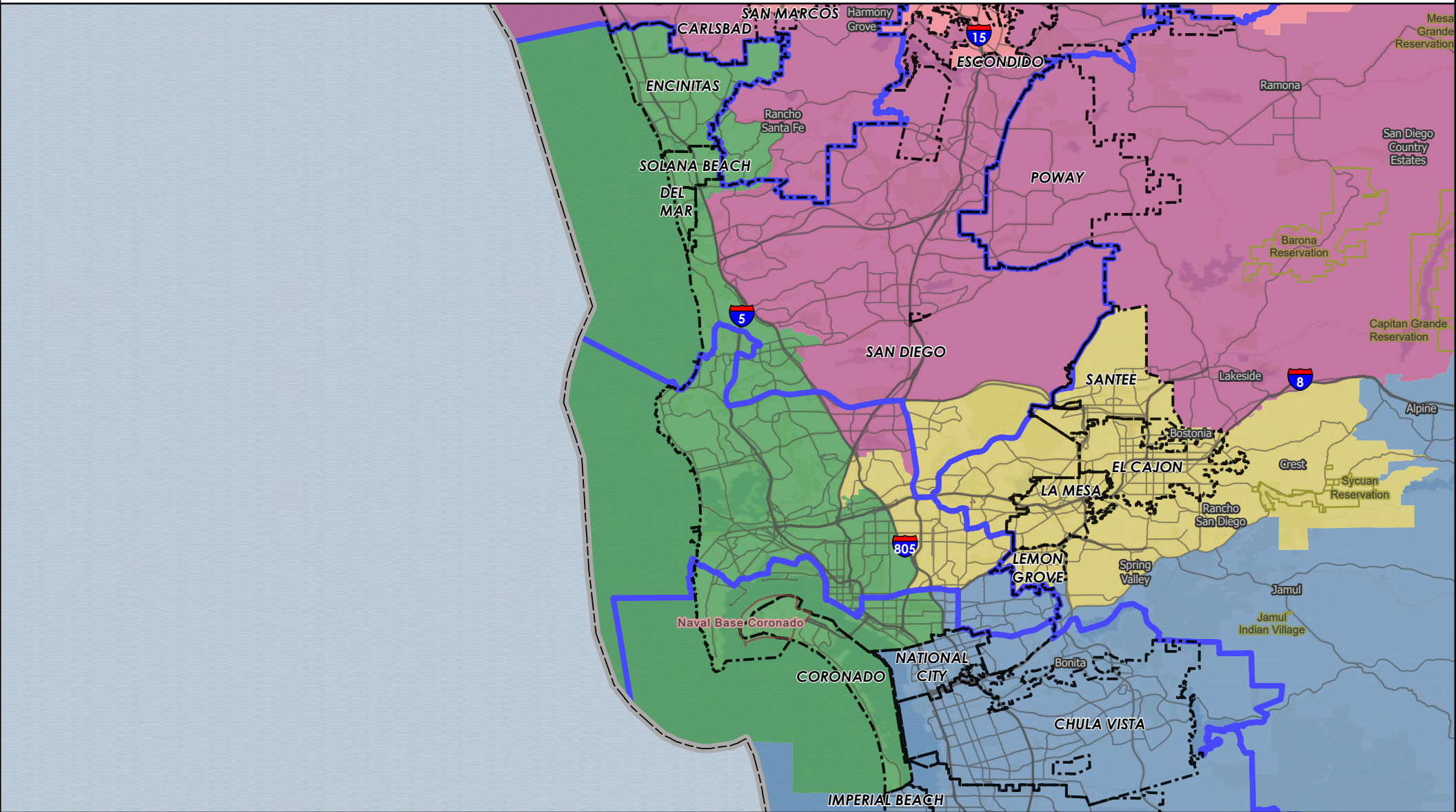
- | | |
|--------------------------------|-------------------------|
| County Boundary | Public Submitted Map 5 |
| Municipal Boundary | Supervisorial Districts |
| Indian Reservation | District 1 |
| Military Facility | District 2 |
| Supervisorial Districts (2011) | District 3 |
| | District 4 |
| | District 5 |



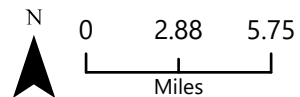
COUNTY OF SAN DIEGO

SUPERVISORIAL DISTRICTS - PUBLIC SUBMITTED MAP 5

DISTRICT 2



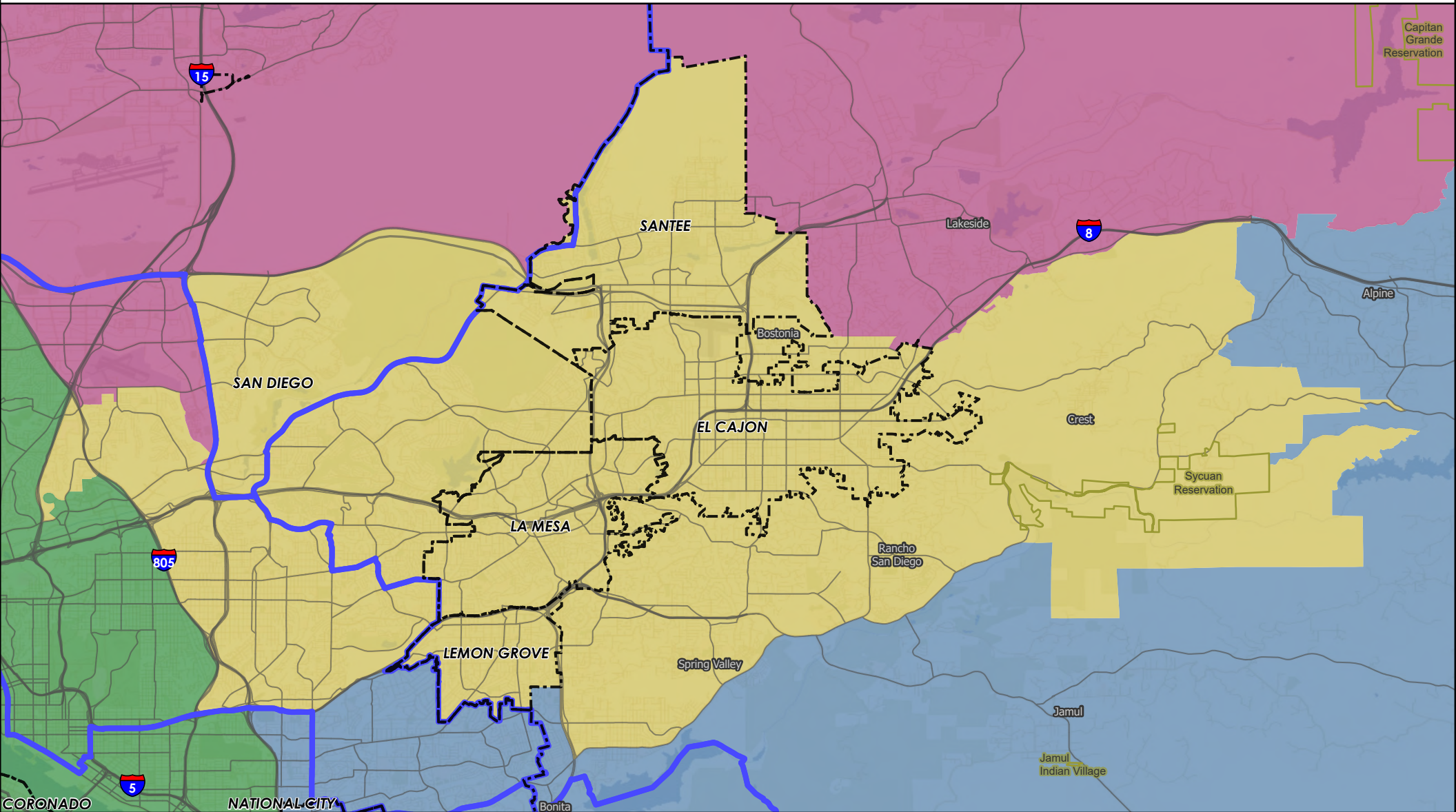
- | | |
|--------------------------------|-------------------------|
| County Boundary | Public Submitted Map 5 |
| Municipal Boundary | Supervisorial Districts |
| Indian Reservation | District 1 |
| Military Facility | District 2 |
| Supervisorial Districts (2011) | District 3 |
| | District 4 |
| | District 5 |



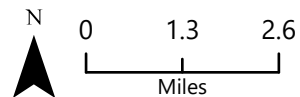
COUNTY OF SAN DIEGO

SUPERVISORIAL DISTRICTS - PUBLIC SUBMITTED MAP 5

DISTRICT 3



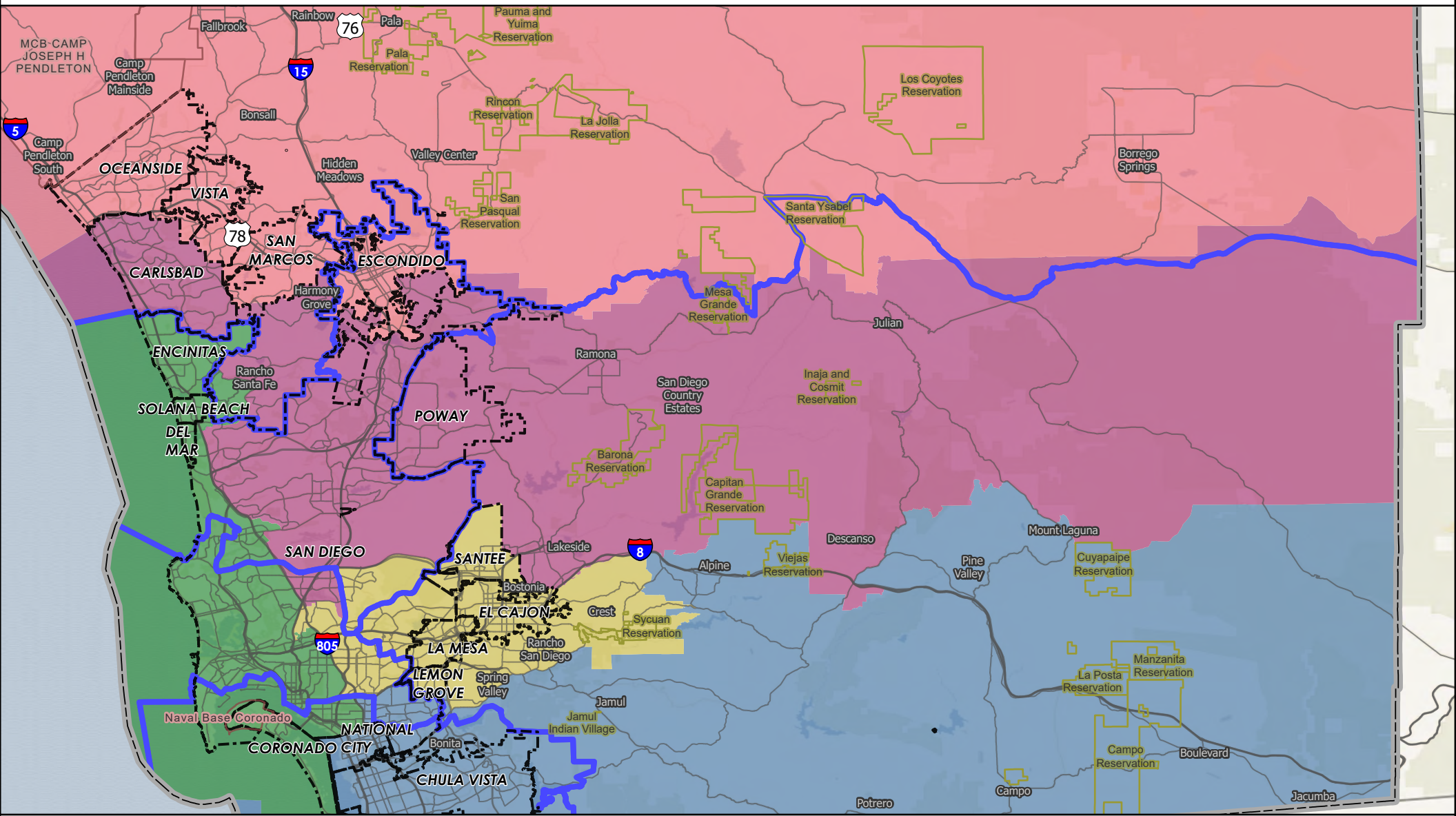
- | | |
|--------------------------------|-------------------------|
| County Boundary | Public Submitted Map 5 |
| Municipal Boundary | Supervisorial Districts |
| Indian Reservation | District 1 |
| Military Facility | District 2 |
| Supervisorial Districts (2011) | District 3 |
| | District 4 |
| | District 5 |



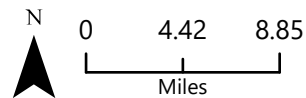
COUNTY OF SAN DIEGO

SUPERVISORIAL DISTRICTS - PUBLIC SUBMITTED MAP 5

DISTRICT 4



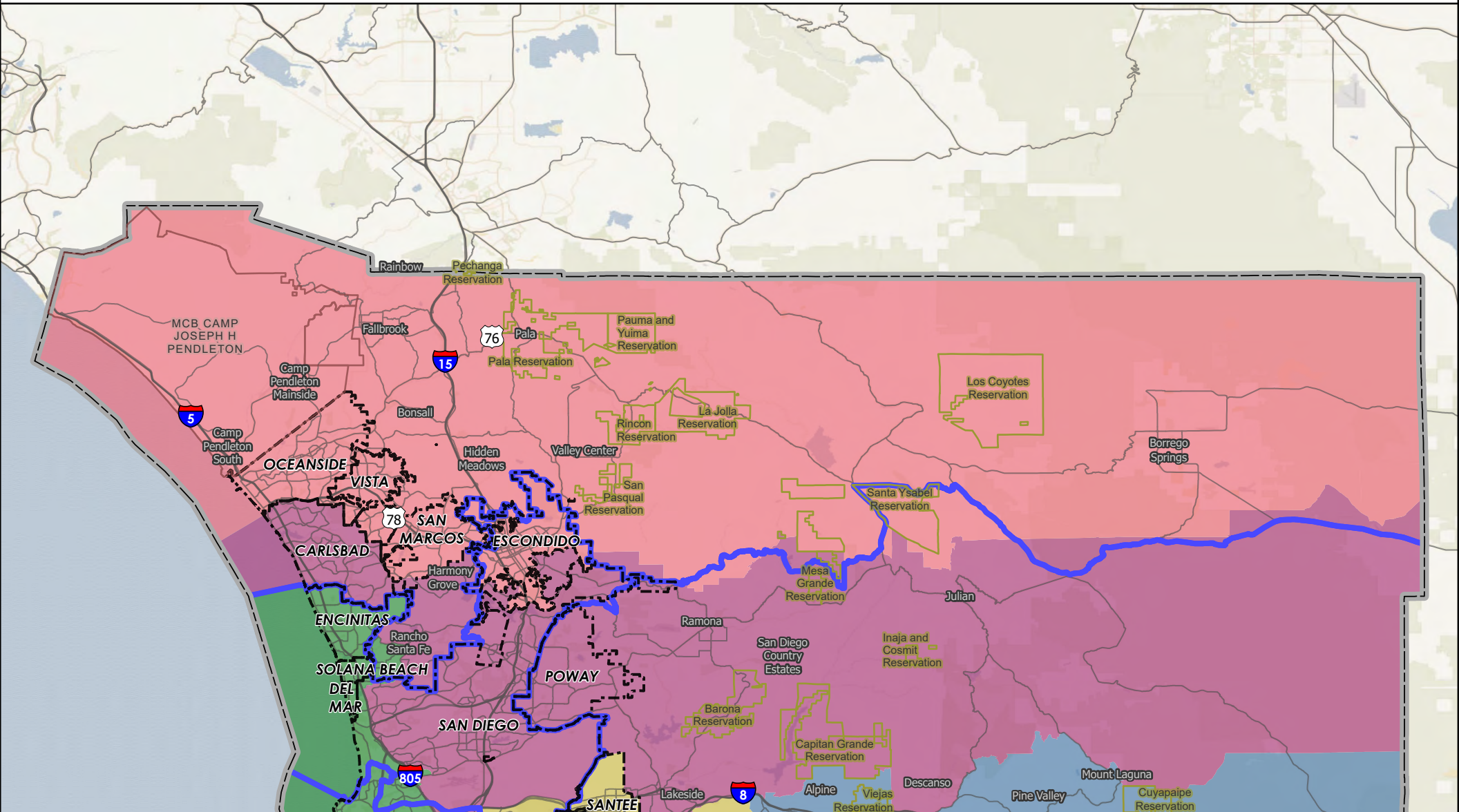
- | | |
|--------------------------------|-------------------------|
| County Boundary | Public Submitted Map 5 |
| Municipal Boundary | Supervisorial Districts |
| Indian Reservation | District 1 |
| Military Facility | District 2 |
| Supervisorial Districts (2011) | District 3 |
| | District 4 |
| | District 5 |



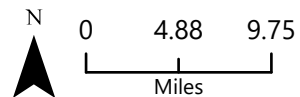
COUNTY OF SAN DIEGO

SUPERVISORIAL DISTRICTS - PUBLIC SUBMITTED MAP 5

DISTRICT 5



- | | |
|--------------------------------|-------------------------|
| County Boundary | Public Submitted Map 5 |
| Municipal Boundary | Supervisorial Districts |
| Indian Reservation | District 1 |
| Military Facility | District 2 |
| Supervisorial Districts (2011) | District 3 |
| | District 4 |
| | District 5 |



Equal Population Criterion

Ideal Population	660,452	
Overall Deviation	7.6%	
< 5.0%	5.0 - 10.0%	> 10.0%

California Statewide Database Adjusted
(incarcerated persons reallocation) 2020
Census P.L. 94-171 Redistricting Data
Summary Files - Total Population.

Total Population & Deviation per District

District ID	Total Population	Over / Under Ideal	Deviation From Ideal
1	639,389	-21,063	-3.2%
2	664,432	3,980	0.6%
3	650,923	-9,529	-1.4%
4	658,143	-2,309	-0.3%
5	689,375	28,923	4.4%

Total Population by Race/Ethnicity per District

District ID	White	Black or African American	American Indian or Alaska Native	Asian	Native Hawaiian and Pacific Islander	Some Other Race	Two or More Races	Hispanic/Latino
1	16.8%	5.3%	0.2%	12.6%	0.4%	0.4%	3.4%	60.8%
2	54.8%	4.9%	0.6%	5.8%	0.4%	0.6%	5.9%	27.0%
3	54.2%	2.0%	0.2%	23.5%	0.2%	0.6%	6.1%	13.1%
4	45.7%	7.1%	0.3%	12.5%	0.4%	0.7%	5.4%	28.1%
5	43.3%	2.8%	0.7%	6.7%	0.5%	0.5%	4.6%	40.9%

California Statewide Database (CA SWDB) Adjusted 2020 Census P.L. 94-171 Redistricting Data - Total Population by Race and Hispanic/Latino origin.

VAP by Race/Ethnicity per District

District	White	Black or African American	American Indian or Alaska Native	Asian	Native Hawaiian and Pacific Islander	Some Other Race	Two or More Races	Hispanic/Latino
1	19.0%	5.6%	0.2%	13.6%	0.4%	0.4%	2.8%	57.9%
2	58.2%	4.9%	0.6%	6.2%	0.4%	0.5%	4.9%	24.2%
3	56.7%	2.1%	0.2%	23.8%	0.2%	0.6%	4.5%	11.9%
4	48.9%	6.8%	0.3%	13.0%	0.4%	0.7%	4.6%	25.3%
5	47.4%	3.0%	0.7%	7.2%	0.6%	0.5%	3.9%	36.8%

CA SWDB Adjusted 2020 Census P.L. 94-171 Redistricting Data - Voting-age Population (VAP) by Race and Hispanic/Latino origin.

CVAP by Race/Ethnicity per District

District ID	White	Black or African American	American Indian or Alaska Native	Asian	Native Hawaiian and Pacific Islander	Two or More Races	Hispanic/Latino
1	24.6%	6.8%	0.2%	13.7%	0.7%	1.9%	51.9%
2	65.5%	5.3%	0.5%	5.3%	0.4%	3.0%	19.9%
3	64.5%	2.3%	0.2%	18.4%	0.3%	3.0%	11.0%
4	55.9%	8.3%	0.2%	11.1%	0.3%	2.9%	21.1%
5	56.4%	3.7%	0.9%	6.2%	0.4%	2.6%	29.6%

CA SWDB Adjusted 2015-2019 American Community Survey Citizen Voting-age Population (CVAP) by Race and Ethnicity Special Tabulation. Rounding may lead to summation of percentages not equal to 100% (+/- 1%).

Criteria Specific to the County of San Diego

At least three districts shall include unincorporated territory.

Number of districts that include unincorporated territory: **4**

Districts that include unincorporated territory:

District 1

District 2

District 3

District 5

Two districts must be comprised of primarily unincorporated territory.

Number of districts that are primarily unincorporated territory: **2**

Districts that are primarily unincorporated territory:

District 2

District 5

Preservation of Geographic Integrity Criteria (i.e., minimize division of cities, communities of interest, etc.)

COI Category	Total # of COIs	# of COIs Preserved in Minimum Districts	% of COIs Preserved in Minimum Districts	COIs Not Preserved in Minimum # of Districts
Community Builder spatial-submitted COIs	20	10	50%	78 Cooridor, AAPI communities, BIPOC Immigrant & Refugee Communities, BIPOC, Immigrant & Refugee, Carlsbad and North County neighbors, I live in North Encanto but a lot of our resources as in La Mesa, Lemon Grove, or in the city., I live in the Oak Park neighborhood bordering City Heights to the West, Rolando/Talmadge to the North, Eastern border is College Ave, southern border is I-94., Inland North County, North County San Diego Asian Diaspora, South Bay
Municipalities	18	17	94%	San Diego
Census Designated Places	39	38	97%	La Presa Cdp
Indian Reservations	19	18	95%	Mesa Grande Reservation
Military Installations	22	20	91%	Marine Corps Recruit Depot Sd, Mcas Miramar
Community Plan Areas (City of San Diego)	57	38	67%	Clairemont Mesa, College Area, Downtown, East Elliott, Encanto Neighborhoods, Greater Golden Hill, Kearny Mesa, La Jolla, Mid-city:City Heights, Mid-city:Eastern Area, Military Facilities, Mission Valley, Navajo, Peninsula, Reserve, San Pasqual, Skyline-paradise Hills, Tierrasanta, University
Community Plan Areas (Non-City of San Diego)	36	25	69%	County Islands, Desert, Jamul, Julian, North County Metro, North Mountain, Otay, Ramona, San Dieguito, Spring Valley, Sweetwater
Elementary School Districts	24	12	50%	Gen Elem Cajon Valley Union, Gen Elem Chula Vista, Gen Elem Encinitas Union, Gen Elem Escondido Union, Gen Elem Julian Union, Gen Elem La Mesa-spring Valley, Gen Elem Lemon Grove, Gen Elem National, Gen Elem Rancho Santa Fe, Gen Elem San Pasqual Union, Gen Elem Santee, Gen Elem Spencer Valley
High School Districts	6	1	17%	High Escondido Union, High Grossmont Union, High Julian Union, High San Dieguito Union, High Sweetwater Union
Unified School Districts	15	7	47%	Unif Bond Poway-sfid 2002-1,Prop U 11/5/02,2019ref, Unif Bond San Marcos Sfid #1-6/04/96, 2004-1 Ref, Unified Carlsbad, Unified Oceanside, Unified Ramona, Unified San Diego, Unified Valley Center-pauma, Unified Vista

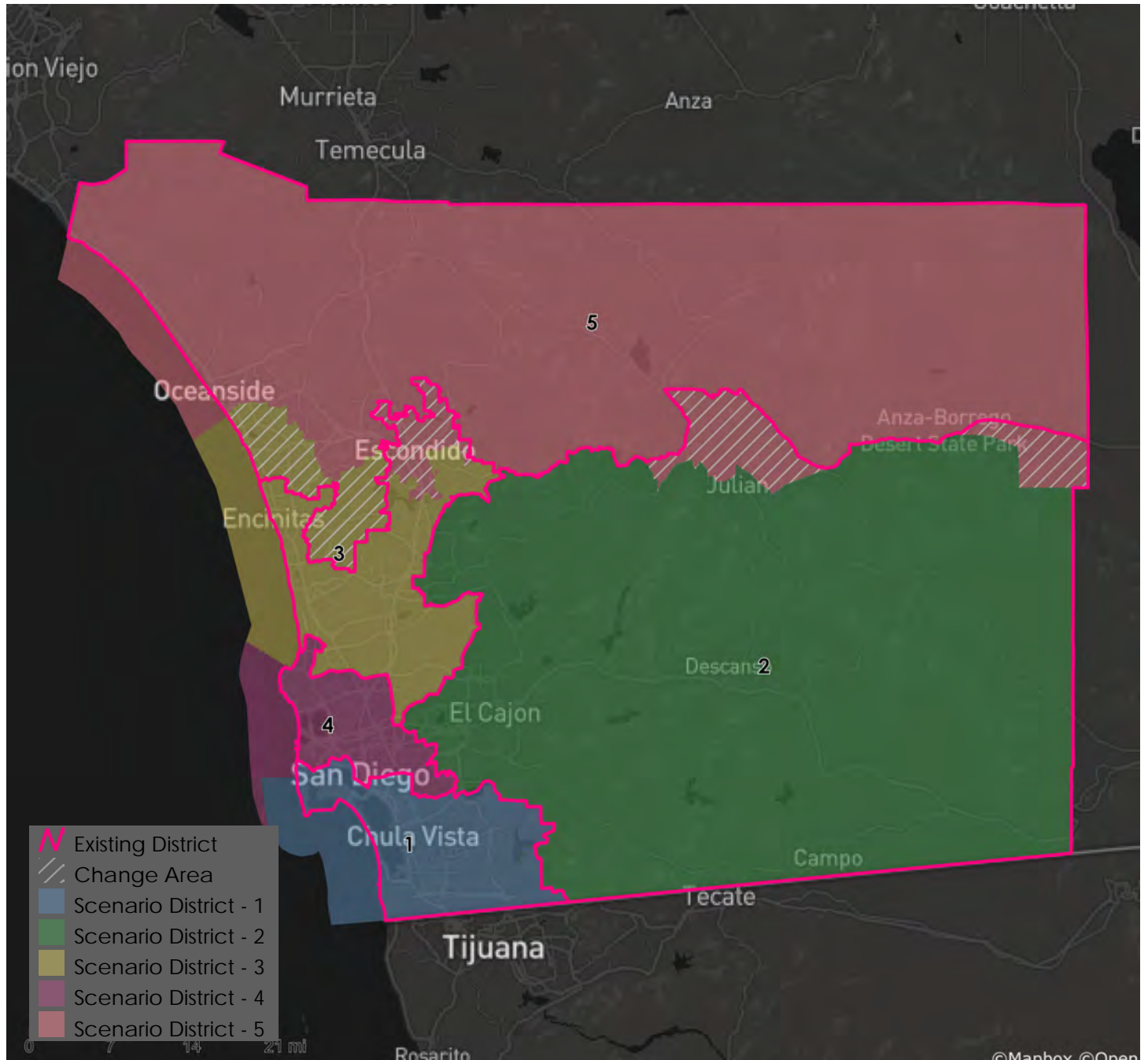
County of San Diego IRC

Public Submitted Map 5 --Supervisory Districts Summary Statistics

11/1/2021



COI Category	Total # of COIs	# of COIs Preserved in Minimum Districts	% of COIs Preserved in Minimum Districts	COIs Not Preserved in Minimum # of Districts
Fire Districts	13	10	77%	Rancho Santa Fe Fire Protection Dist. Of Sd County, San Marcos Fire Protection District, San Miguel Consol. Fire Protection District
Public Utility Districts	2	2	100%	
Sanitation Districts	4	3	75%	San Diego County Sanitation District L&I
Water Districts	50	40	80%	Helix Water District Land, Olivenhain Municipal Water District, Otay Water District, Ramona Municipal Water District, Rincon Del Diablo Muni Id.E (Formerly F&G), Rincon Del Diablo Muni Water Imp Dist A, Rincon Del Diablo Municipal Water District, South Bay Irrigation Land, Vallecitos Water District, Vallecitos Water Imp Dist No 6 - Sewer Service



Metadata

Run Date/Time:	2021-11-05 15:35:38
Workflow Directory:	X:\F2089_San_Diego_County\Projects\Alteryx\
Feature Class:	File: gdb:X:\F2089_San_Diego_County\Data\Workspace_AB.gdb\Blocks_2020_02
Scenario:	Districts_PubSub_5