

County of San Diego IRC Approved Mapping Motion 11/13/21

ON MOTION of Commissioner Inman, seconded by Commissioner Russ, the Commission approved the following direction to FLO Analytics regarding Draft Map 11:

- Add North Mountain, Desert, Borrego Springs County Planning Districts to District 3 from District 5.
- Crest County Planning District to District 3.
- Jamul County Planning District to District 3.
- Lakeside County Planning District to District 3.
- Ramona County Planning District to District 3.
- Address contiguity between Coronado and District 4 via ferry landing at Broadway Pier/Convention Center.
- Move Santa Ysabel reservation to District 3.
- ~~* Also develop a map variation that moves from District 3 to District 4 the area bounded by SR 52 on south, I 15 on east and SR 56 corridor area including Rancho Peñasquitos, Mira Mesa and Torrey Highlands.~~
- ~~* Adjust District 4 to rebalance/reproportion CVAP to reduce the variance without significantly impacting surrounding districts.~~

***See Draft Map 13b.**

Please note the district numbers in this map do not correspond to the numbers of existing supervisory districts. District numbers from prior IRC draft maps have been adjusted to more closely align with population density of existing district boundaries to the extent possible.

COUNTY OF SAN DIEGO SUPERVISORIAL DISTRICTS DRAFT MAP 13A - 11/13/2021 MEETING



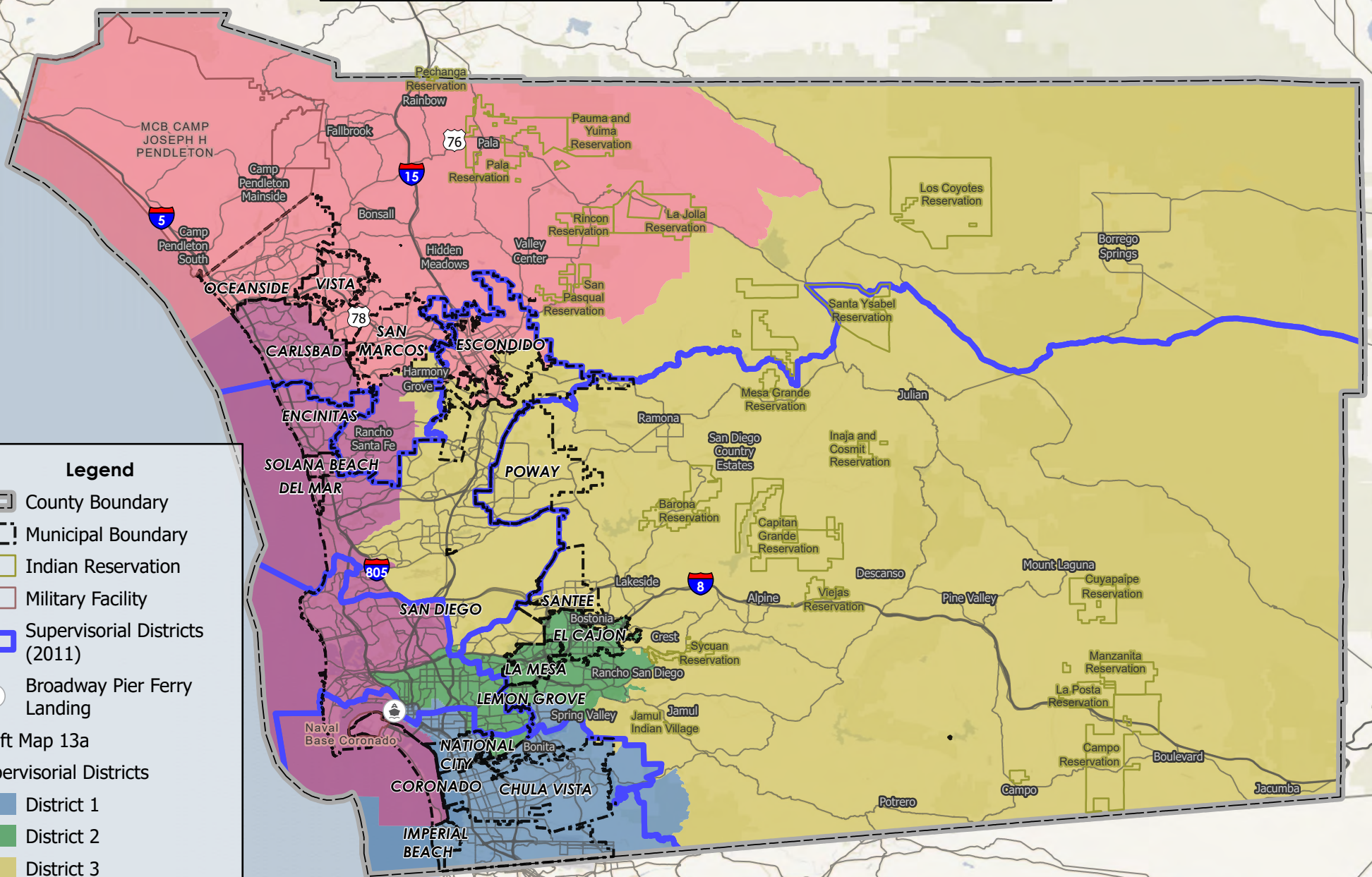
Legend

- County Boundary
- Municipal Boundary
- Indian Reservation
- Military Facility
- Supervisory Districts (2011)
- Broadway Pier Ferry Landing

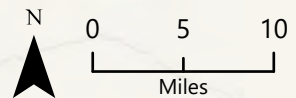
Draft Map 13a

Supervisory Districts

- District 1
- District 2
- District 3
- District 4
- District 5



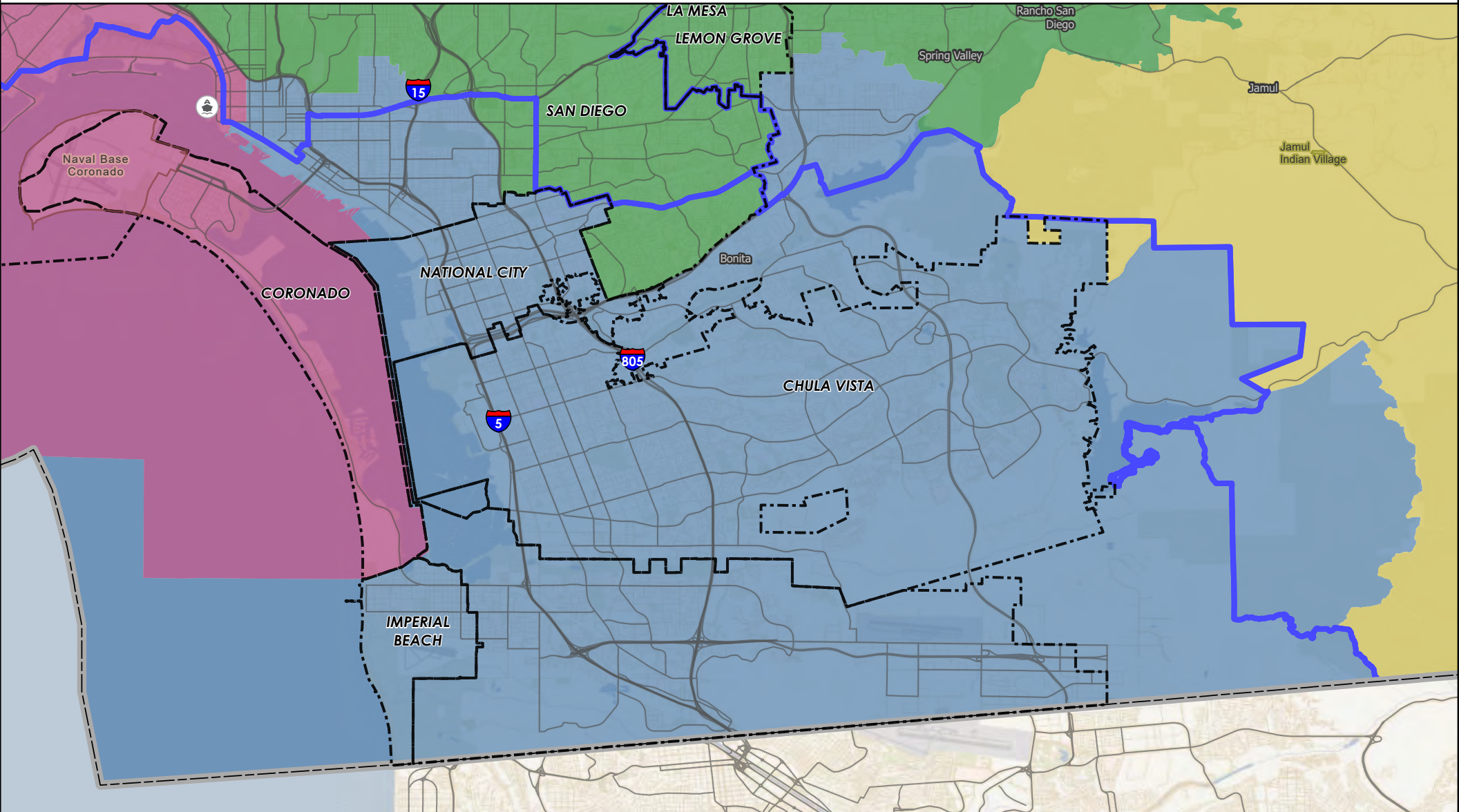
Data obtained from SanGIS Data Warehouse.



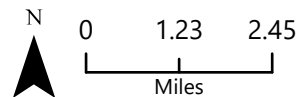
COUNTY OF SAN DIEGO

SUPERVISORIAL DISTRICTS - DRAFT MAP 13A - 11/13/2021 MEETING

DISTRICT 1



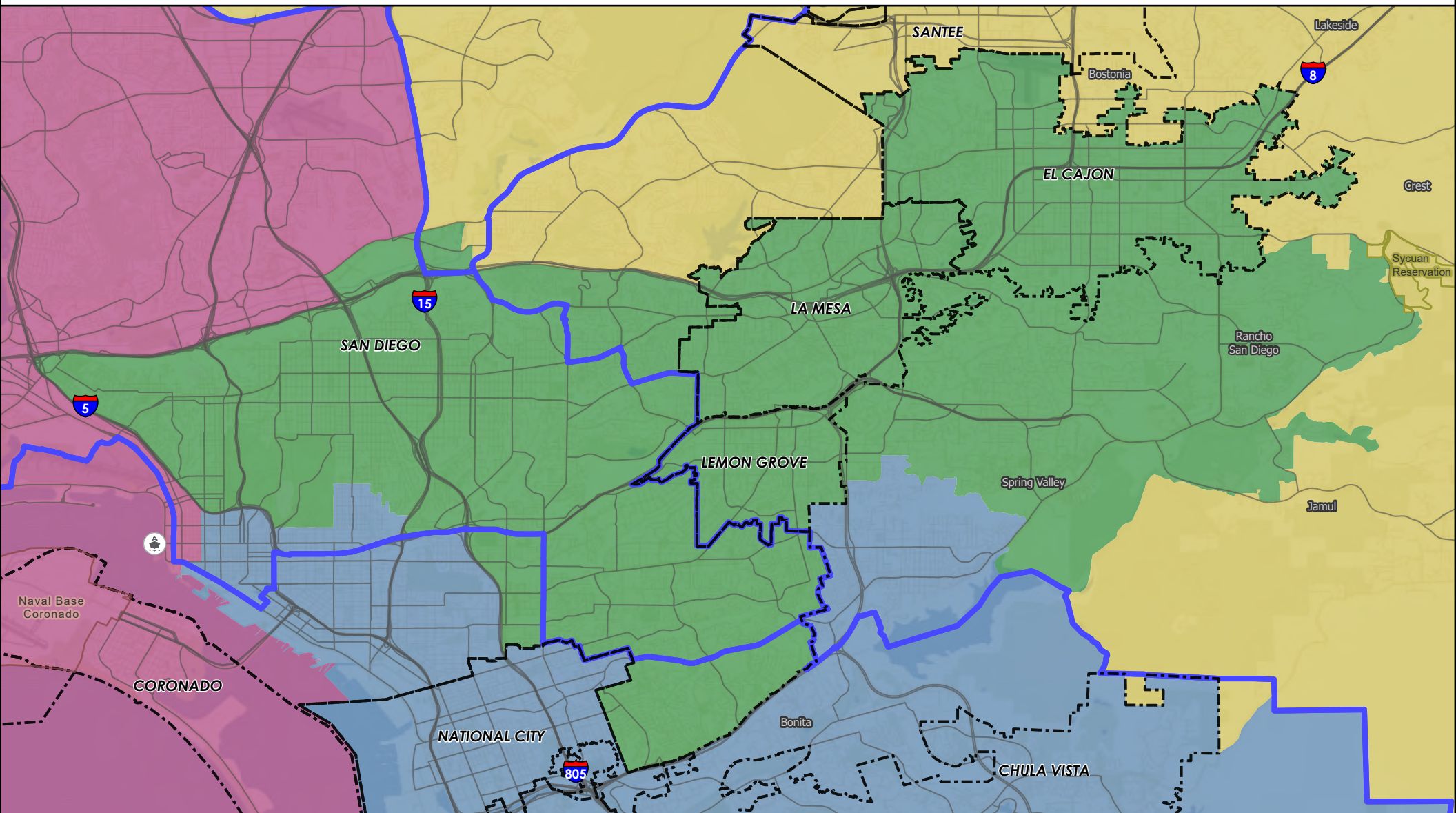
- | | |
|--------------------------------|--------------------------------|
| County Boundary | Draft Map 13a |
| Municipal Boundary | Supervisorial Districts |
| Indian Reservation | District 1 |
| Military Facility | District 2 |
| Supervisorial Districts (2011) | District 3 |
| Broadway Pier Ferry Landing | District 4 |
| | District 5 |



COUNTY OF SAN DIEGO

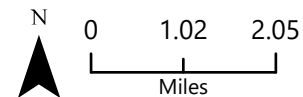
SUPERVISORIAL DISTRICTS - DRAFT MAP 13A - 11/13/2021 MEETING

DISTRICT 2



- County Boundary
- Municipal Boundary
- Indian Reservation
- Military Facility
- Supervisorial Districts (2011)
- Broadway Pier Ferry Landing

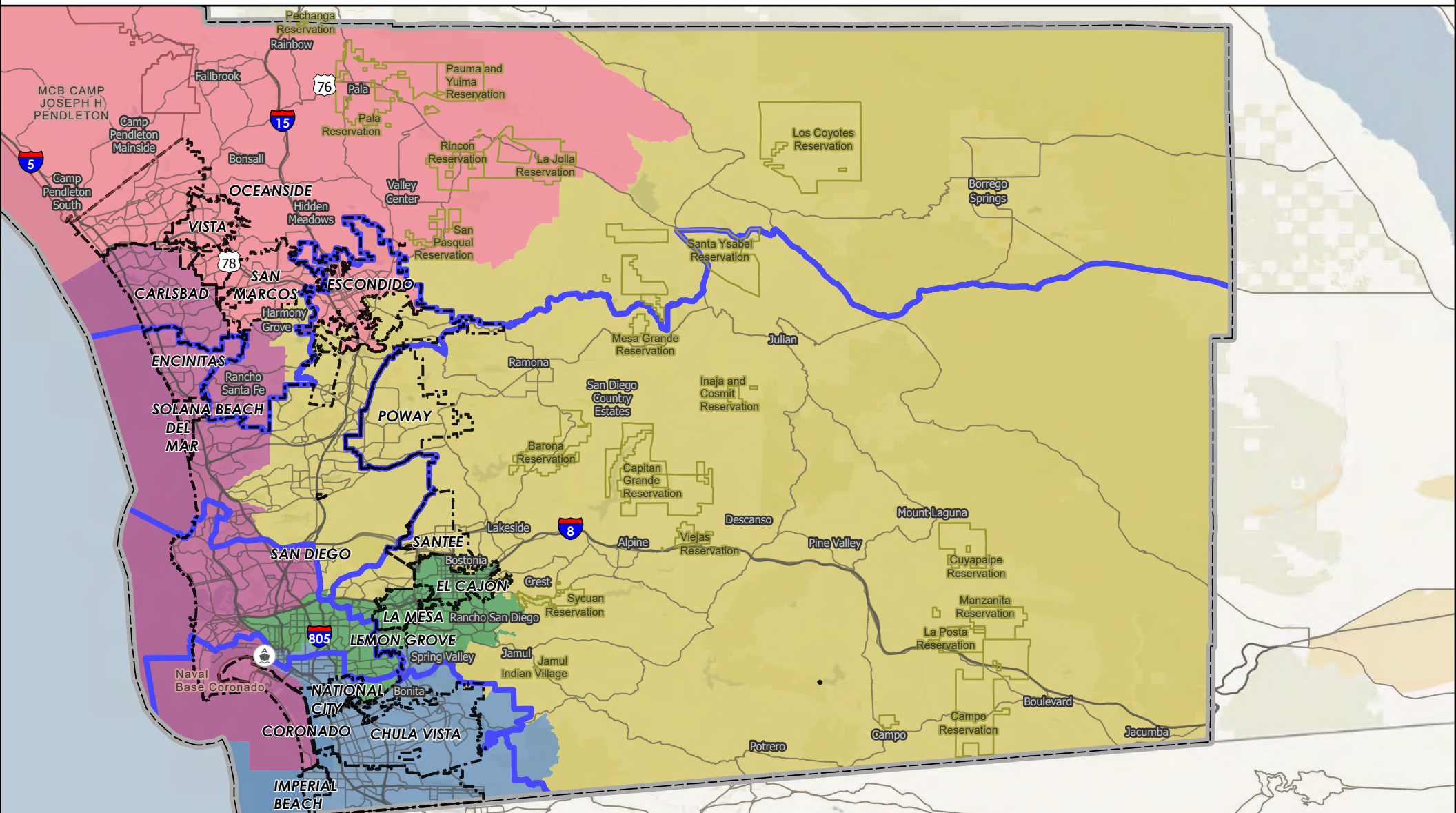
- Draft Map 13a
Supervisorial Districts
- District 1
 - District 2
 - District 3
 - District 4
 - District 5



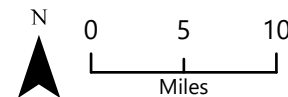
COUNTY OF SAN DIEGO

SUPERVISORIAL DISTRICTS - DRAFT MAP 13A - 11/13/2021 MEETING

DISTRICT 3



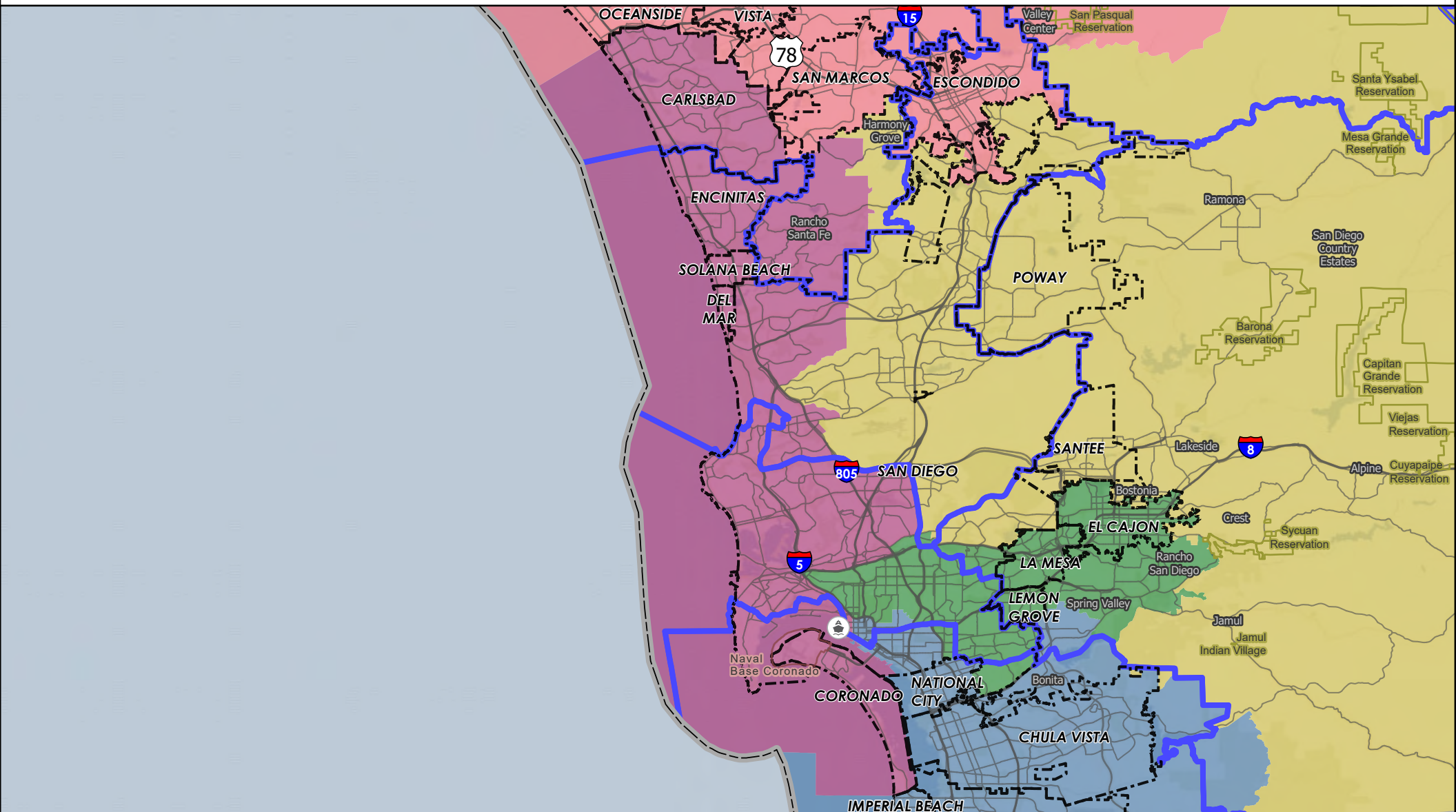
- | | |
|--------------------------------|-------------------------|
| County Boundary | Draft Map 13a |
| Municipal Boundary | Supervisorial Districts |
| Indian Reservation | District 1 |
| Military Facility | District 2 |
| Supervisorial Districts (2011) | District 3 |
| Broadway Pier Ferry Landing | District 4 |
| | District 5 |



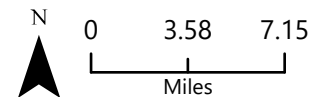
COUNTY OF SAN DIEGO

SUPERVISORIAL DISTRICTS - DRAFT MAP 13A - 11/13/2021 MEETING

DISTRICT 4



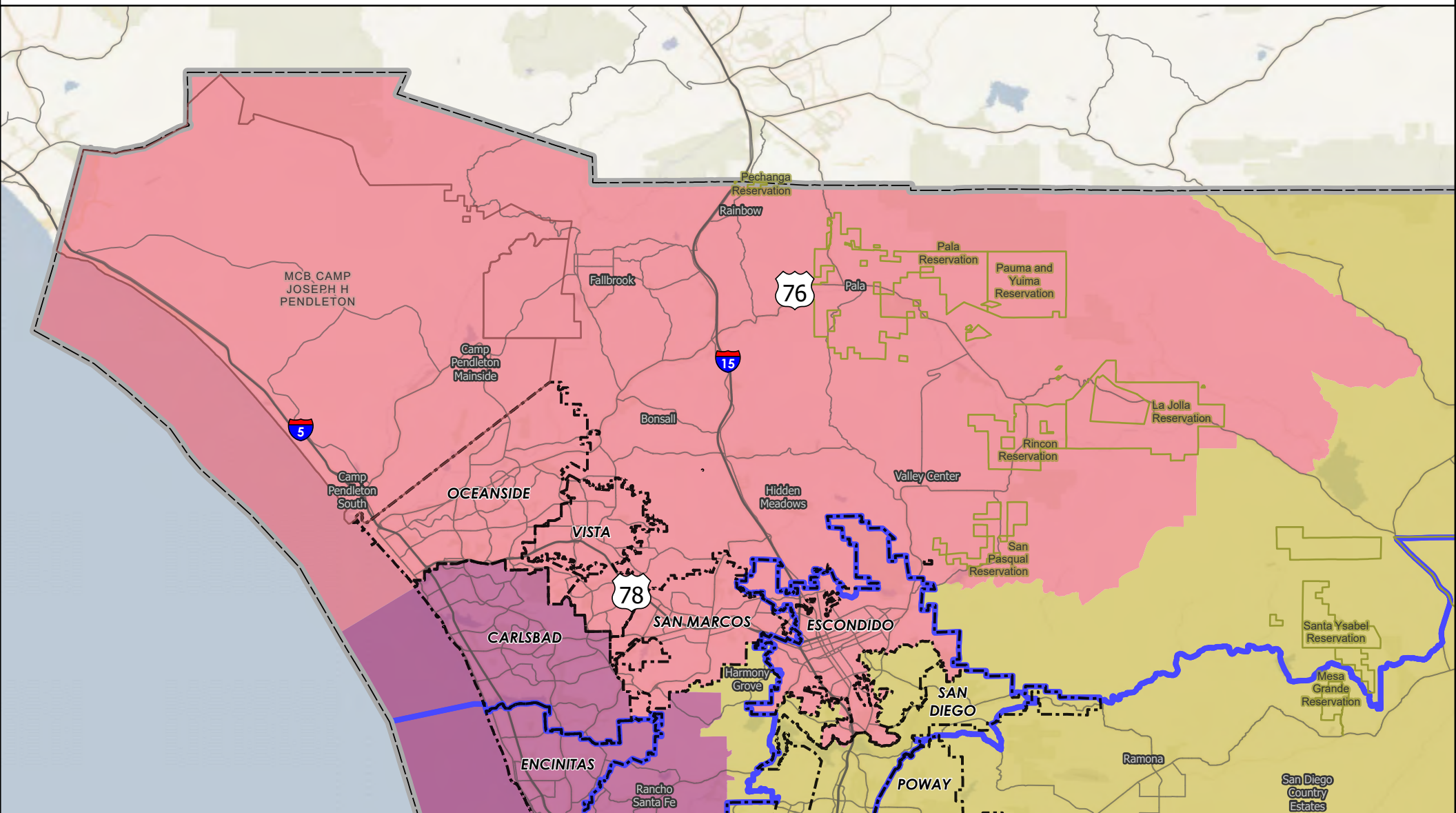
- | | |
|--------------------------------|-------------------------|
| County Boundary | Draft Map 13a |
| Municipal Boundary | Supervisorial Districts |
| Indian Reservation | District 1 |
| Military Facility | District 2 |
| Supervisorial Districts (2011) | District 3 |
| Broadway Pier Ferry Landing | District 4 |
| | District 5 |



COUNTY OF SAN DIEGO

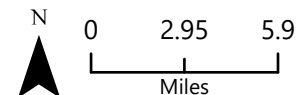
SUPERVISORIAL DISTRICTS - DRAFT MAP 13A - 11/13/2021 MEETING

DISTRICT 5



- County Boundary
- Municipal Boundary
- Indian Reservation
- Military Facility
- Supervisorial Districts (2011)

- Draft Map 13a
Supervisorial Districts
- District 1
 - District 2
 - District 3
 - District 4
 - District 5



County of San Diego IRC

Draft Map 13a --Supervisory Districts Summary Statistics

11/13/2021



Equal Population Criterion

Ideal Population		660,452
Overall Deviation		6.8%
< 5.0%	5.0 - 10.0%	> 10.0%

California Statewide Database Adjusted
(incarcerated persons reallocation) 2020
Census P.L. 94-171 Redistricting Data
Summary Files - Total Population.

Total Population & Deviation per District

District ID	Total Population	Over / Under Ideal	Deviation From Ideal
1	638,168	-22,284	-3.4%
2	644,253	-16,199	-2.5%
3	658,470	-1,982	-0.3%
4	678,469	18,017	2.7%
5	682,902	22,450	3.4%

Total Population by Race/Ethnicity per District

District ID	White	Black or African American	American Indian or Alaska Native	Asian	Native Hawaiian and Pacific Islander	Some Other Race	Two or More Races	Hispanic/Latino
1	17.2%	5.3%	0.2%	11.6%	0.4%	0.5%	3.5%	61.3%
2	38.6%	9.3%	0.3%	11.4%	0.5%	0.6%	5.0%	34.4%
3	53.4%	2.6%	0.6%	18.3%	0.3%	0.6%	6.3%	17.9%
4	61.7%	2.3%	0.2%	12.8%	0.2%	0.7%	6.0%	16.2%
5	43.1%	2.8%	0.7%	6.7%	0.6%	0.5%	4.6%	41.0%

California Statewide Database (CA SWDB) Adjusted 2020 Census P.L. 94-171 Redistricting Data - Total Population by Race and Hispanic/Latino origin.

VAP by Race/Ethnicity per District

District	White	Black or African American	American Indian or Alaska Native	Asian	Native Hawaiian and Pacific Islander	Some Other Race	Two or More Races	Hispanic/Latino
1	19.7%	5.7%	0.3%	12.5%	0.4%	0.4%	3.0%	58.1%
2	41.9%	9.1%	0.3%	12.0%	0.5%	0.5%	4.3%	31.3%
3	56.5%	2.7%	0.5%	18.7%	0.3%	0.5%	4.8%	15.9%
4	63.8%	2.3%	0.2%	13.1%	0.2%	0.6%	4.8%	14.9%
5	47.2%	3.0%	0.6%	7.3%	0.6%	0.5%	3.9%	36.9%

CA SWDB Adjusted 2020 Census P.L. 94-171 Redistricting Data - Voting-age Population (VAP) by Race and Hispanic/Latino origin.

County of San Diego IRC

Draft Map 13a --Supervisory Districts Summary Statistics

11/13/2021



CVAP by Race/Ethnicity per District

District ID	White	Black or African American	American Indian or Alaska Native	Asian	Native Hawaiian and Pacific Islander	Two or More Races	Hispanic/Latino
1	24.8%	6.9%	0.2%	12.9%	0.6%	2.1%	52.4%
2	48.2%	11.0%	0.2%	10.7%	0.5%	3.1%	26.1%
3	64.6%	2.8%	0.5%	14.7%	0.4%	3.1%	13.5%
4	71.5%	2.5%	0.3%	9.6%	0.2%	2.6%	13.2%
5	56.2%	3.7%	0.8%	6.2%	0.5%	2.6%	29.8%

CA SWDB Adjusted 2015-2019 American Community Survey Citizen Voting-age Population (CVAP) by Race and Ethnicity Special Tabulation. Rounding may lead to summation of percentages not equal to 100% (+/- 1%).

Criteria Specific to the County of San Diego

At least three districts shall include unincorporated territory.

Number of districts that include unincorporated territory: **5**

Districts that include unincorporated territory:

District 1

District 2

District 3

District 4

District 5

Two districts must be comprised of primarily unincorporated territory.

Number of districts that are primarily unincorporated territory: **2**

Districts that are primarily unincorporated territory:

District 3

District 5

County of San Diego IRC

Draft Map 13a--Supervisory Districts Summary Statistics

11/13/2021



Preservation of Geographic Integrity Criteria (i.e., minimize division of cities, communities of interest, etc.)

COI Category	Total # of COIs	# of COIs Preserved in Minimum Districts	% of COIs Preserved in Minimum Districts	COIs Not Preserved in Minimum # of Districts
*Community Builder spatial-submitted COIs	20	9	45%	78 Cooridor, AAPI communities, BIPOC Immigrant & Refugee Communities, BIPOC Immigrant and Refugee, BIPOC, Immigrant & Refugee, Carlsbad and North County neighbors, I live in North Encanto but a lot of our resources as in La Mesa, Lemon Grove, or in the city., Inland North County, North County San Diego Asian Diaspora, South Bay, Valley Center
Municipalities	18	17	94%	San Diego
Census Designated Places	39	36	92%	Jamul Cdp, Rancho San Diego Cdp, Spring Valley Cdp
Indian Reservations	19	19	100%	
Military Installations	22	21	95%	Mcas Miramar
Community Plan Areas (City of San Diego)	57	51	89%	Del Mar Mesa, Downtown, Los Penasquitos Canyon, Military Facilities, Mission Valley, Reserve
Community Plan Areas (Non-City of San Diego)	36	28	78%	County Islands, Jamul, North County Metro, North Mountain, Otay, Pala - Pauma, San Dieguito, Spring Valley
Elementary School Districts	24	10	42%	Gen Bond Solana Beach-sfid2016-1a Meas Jj 11/08/16, Gen Elem Cajon Valley Union, Gen Elem Chula Vista, Gen Elem Dehesa, Gen Elem Del Mar Union, Gen Elem Encinitas Union, Gen Elem Escondido Union, Gen Elem Julian Union, Gen Elem La Mesa-spring Valley, Gen Elem National, Gen Elem Rancho Santa Fe, Gen Elem San Pasqual Union, Gen Elem Santee, Gen Elem South Bay Union
High School Districts	6	1	17%	High Escondido Union, High Grossmont Union, High Julian Union, High San Dieguito Union, High Sweetwater Union
Unified School Districts	15	7	47%	Unif Bond Poway-sfid 2002-1, Prop U 11/5/02, 2019ref, Unif Bond San Marcos Sfid #1-6/04/96, 2004-1 Ref, Unified Carlsbad, Unified Oceanside, Unified San Diego, Unified Valley Center-pauma, Unified Vista, Unified Warner
Fire Districts	13	9	69%	Rancho Santa Fe Fire Protection Dist. Of Sd County, San Marcos Fire Protection District, San Miguel Consol. Fire Protection District, Valley Center Fire Protection District

County of San Diego IRC

Draft Map 13a --Supervisory Districts Summary Statistics

11/13/2021



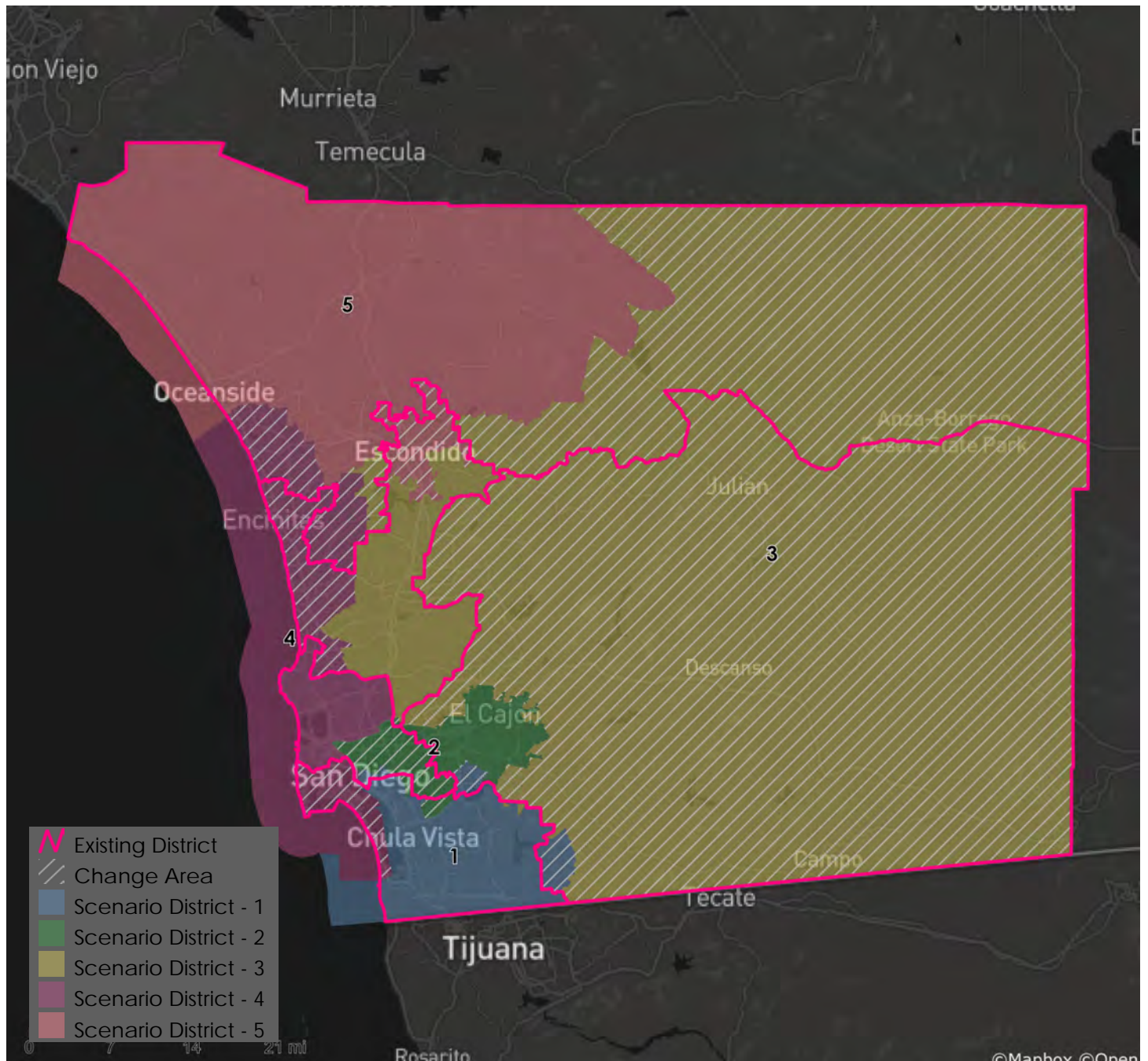
COI Category	Total # of COIs	# of COIs Preserved in Minimum Districts	% of COIs Preserved in Minimum Districts	COIs Not Preserved in Minimum # of Districts
Public Utility Districts	2	2	100%	
Sanitation Districts	4	3	75%	San Diego County Sanitation District L&I
Water Districts	50	35	70%	Helix Water District Land, Olivenhain Municipal Water District, Otay Water District, Padre Dam Muni Water Imp Dist #1 (Eastern Portion), Padre Dam Muni Water Imp Dist B, Padre Dam Municipal Water District, Questhaven Municipal Water District, Rincon Del Diablo Muni Id.E (Formerly F&G), Rincon Del Diablo Muni Water Imp Dist A, Rincon Del Diablo Municipal Water District, South Bay Irrigation Land, Vallecitos Water District, Vallecitos Water Imp Dist No 6 - Sewer Service, Valley Center Municipal Water District, Vista Irrigation Land

*Many Community Builder submissions represent multiple COIs or proposed supervisorial districts; therefore, fewer can be reasonably maintained within a single district than other categories (e.g., Census Designated Places).

County of San Diego IRC

Draft Map 13a --Supervisory Districts Summary Statistics

11/13/2021



Metadata

Run Date/Time:	2021-11-17 09:55:17
Workflow Directory:	X:\F2089_San_Diego_County\Projects\Alteryx\
Feature Class:	File: gdb:X:\F2089_San_Diego_County\Data\Redist.gdb\Blocks_2020_02
Scenario:	Districts_DraftMap_13a