

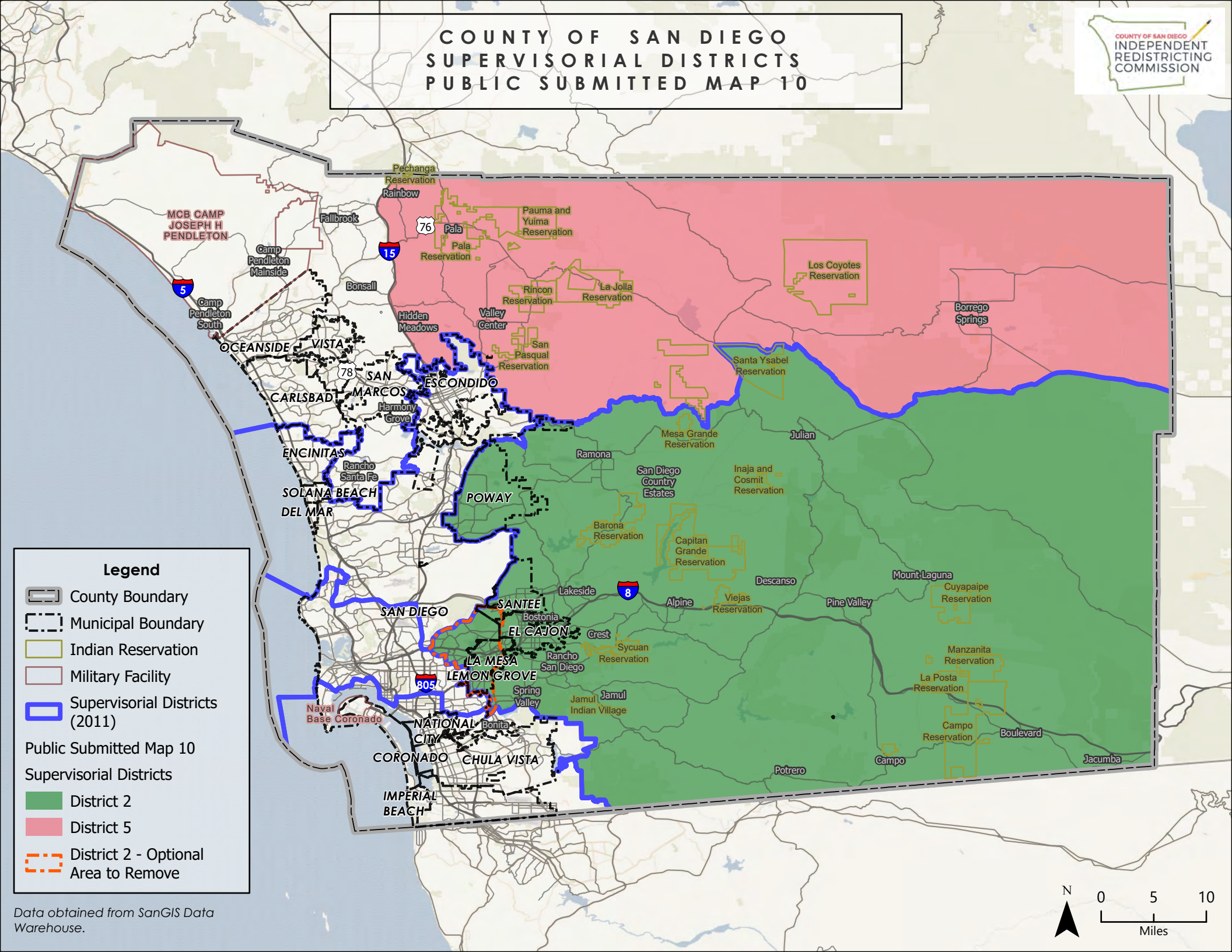
# COUNTY OF SAN DIEGO SUPERVISORIAL DISTRICTS PUBLIC SUBMITTED MAP 10

COUNTY OF SAN DIEGO  
INDEPENDENT  
REDISTRICTING  
COMMISSION

**Legend**

- County Boundary
- Municipal Boundary
- Indian Reservation
- Military Facility
- Supervisory Districts (2011)
- Supervisory Districts
- District 2
- District 5
- District 2 - Optional Area to Remove

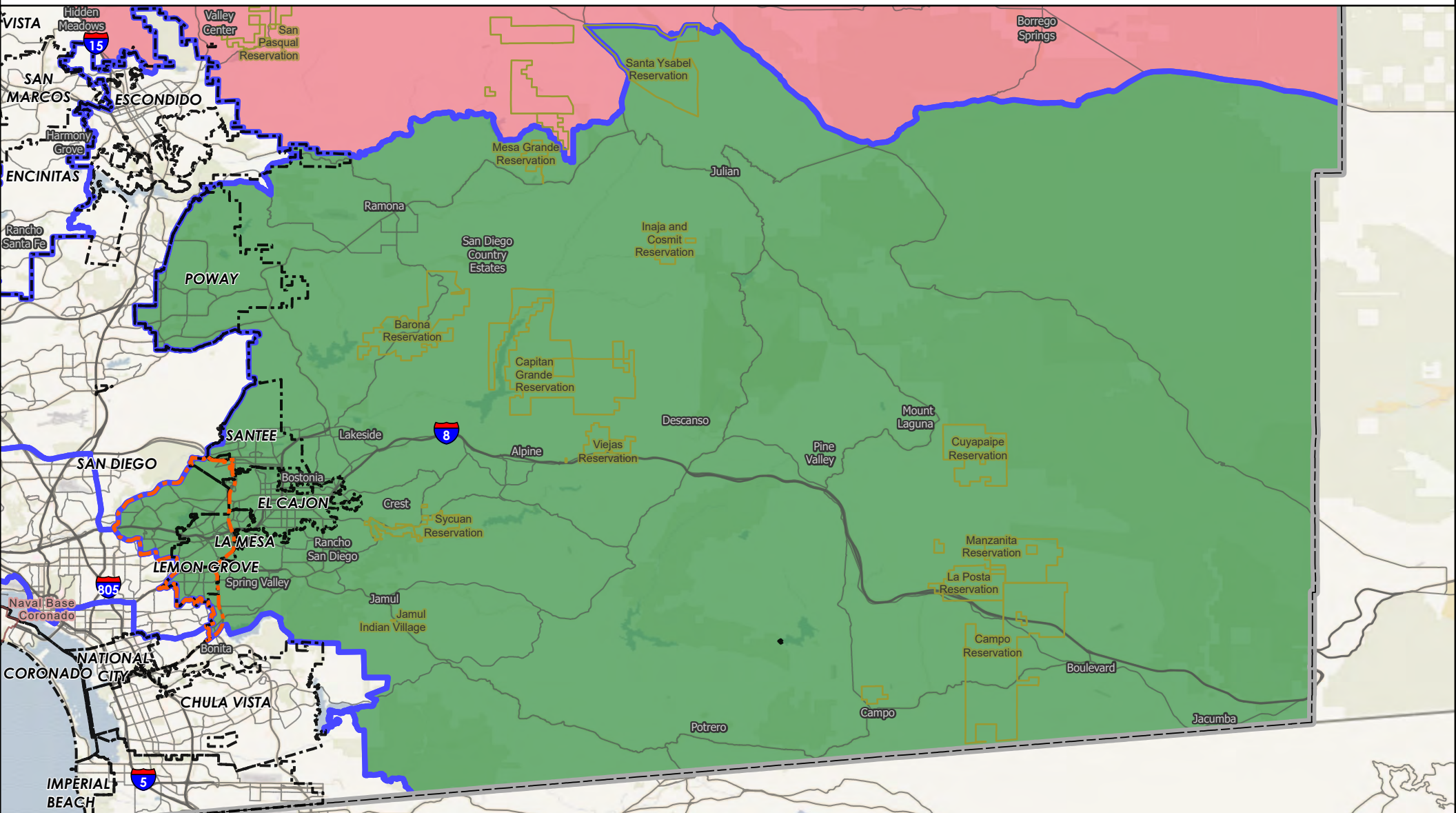
Public Submitted Map 10  
Supervisory Districts



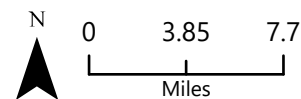
# COUNTY OF SAN DIEGO

## SUPERVISORIAL DISTRICTS - PUBLIC SUBMITTED MAP 10

### DISTRICT 2



- |                                |                                      |
|--------------------------------|--------------------------------------|
| County Boundary                | Public Submitted Map 10              |
| Municipal Boundary             | Supervisorial Districts              |
| Indian Reservation             | District 2                           |
| Military Facility              | District 5                           |
| Supervisorial Districts (2011) | District 2 - Optional Area to Remove |

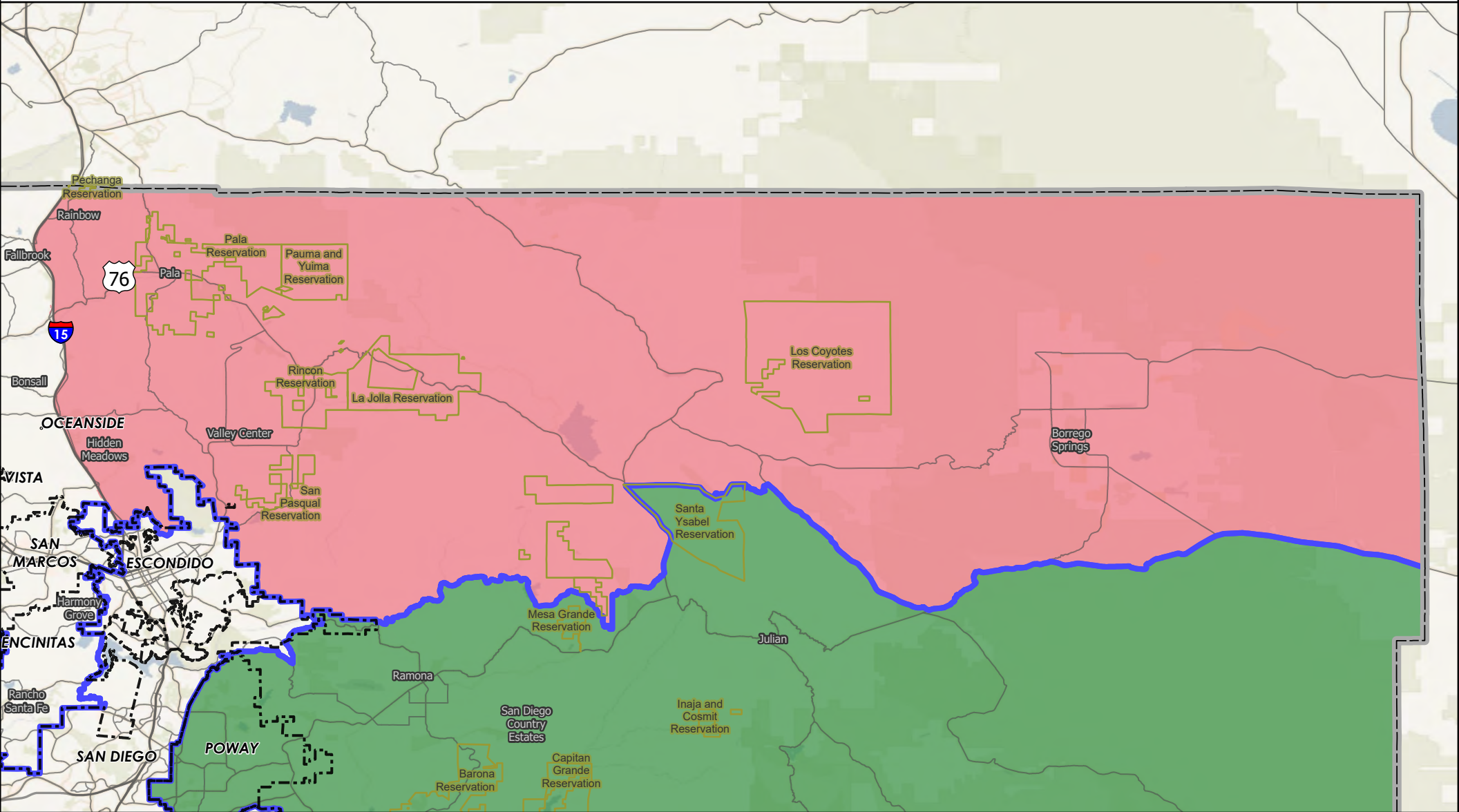




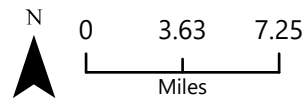
# COUNTY OF SAN DIEGO

## SUPERVISORIAL DISTRICTS - PUBLIC SUBMITTED MAP 10

### DISTRICT 5



- |                                |                                      |
|--------------------------------|--------------------------------------|
| County Boundary                | Public Submitted Map 10              |
| Municipal Boundary             | Supervisorial Districts              |
| Indian Reservation             | District 2                           |
| Military Facility              | District 5                           |
| Supervisorial Districts (2011) | District 2 - Optional Area to Remove |



Data obtained from SanGIS Data Warehouse.

# County of San Diego IRC

## Public Submitted Map 10 --Supervisory Districts Summary Statistics

11/13/2021



### Equal Population Criterion

Ideal Population		660,452
Overall Deviation		—
< 5.0%	5.0 - 10.0%	> 10.0%

California Statewide Database Adjusted  
(incarcerated persons reallocation) 2020  
Census P.L. 94-171 Redistricting Data  
Summary Files - Total Population.

### Total Population & Deviation per District

District ID	Total Population	Over / Under Ideal	Deviation From Ideal
	2,588,588	1,928,136	291.9%
2	664,303	3,851	0.6%
5	49,371	-611,081	-92.5%

### Total Population by Race/Ethnicity per District

District ID	White	Black or African American	American Indian or Alaska Native	Asian	Native Hawaiian and Pacific Islander	Some Other Race	Two or More Races	Hispanic/Latino
	39.9%	4.3%	0.2%	13.9%	0.4%	0.6%	4.9%	35.8%
2	54.8%	4.9%	0.6%	5.8%	0.4%	0.6%	5.9%	27.1%
5	53.5%	1.2%	5.1%	4.3%	0.2%	0.5%	4.6%	30.5%

California Statewide Database (CA SWDB) Adjusted 2020 Census P.L. 94-171 Redistricting Data - Total Population by Race and Hispanic/Latino origin.

### VAP by Race/Ethnicity per District

District	White	Black or African American	American Indian or Alaska Native	Asian	Native Hawaiian and Pacific Islander	Some Other Race	Two or More Races	Hispanic/Latino
	43.1%	4.4%	0.3%	14.5%	0.4%	0.5%	4.0%	32.7%
2	58.2%	4.9%	0.6%	6.2%	0.4%	0.5%	4.9%	24.2%
5	58.2%	1.3%	4.6%	4.7%	0.2%	0.5%	4.0%	26.6%

CA SWDB Adjusted 2020 Census P.L. 94-171 Redistricting Data - Voting-age Population (VAP) by Race and Hispanic/Latino origin.

### CVAP by Race/Ethnicity per District

# County of San Diego IRC

## Public Submitted Map 10 --Supervisory Districts Summary Statistics

11/13/2021



District ID	White	Black or African American	American Indian or Alaska Native	Asian	Native Hawaiian and Pacific Islander	Two or More Races	Hispanic/Latino
	50.9%	5.4%	0.3%	12.4%	0.4%	2.6%	27.8%
2	65.5%	5.3%	0.5%	5.2%	0.4%	3.0%	19.9%
5	66.2%	1.5%	5.4%	4.4%	0.1%	3.1%	19.1%

CA SWDB Adjusted 2015-2019 American Community Survey Citizen Voting-age Population (CVAP) by Race and Ethnicity Special Tabulation. Rounding may lead to summation of percentages not equal to 100% (+/- 1%).

### Criteria Specific to the County of San Diego

**At least three districts shall include unincorporated territory.**

Number of districts that include unincorporated territory: **3**

Districts that include unincorporated territory:

**District**

**District 2**

**District 5**

**Two districts must be comprised of primarily unincorporated territory.**

Number of districts that are primarily unincorporated territory: **2**

Districts that are primarily unincorporated territory:

**District 2**

**District 5**

# County of San Diego IRC

## Public Submitted Map 10 --Supervisory Districts Summary Statistics

11/13/2021



### Preservation of Geographic Integrity Criteria (i.e., minimize division of cities, communities of interest, etc.)

COI Category	Total # of COIs	# of COIs Preserved in Minimum Districts	% of COIs Preserved in Minimum Districts	COIs Not Preserved in Minimum # of Districts
*Community Builder spatial-submitted COIs	27	11	41%	78 Cooridor, BIPOC Immigrant & Refugee Communities, BIPOC, Immigrant & Refugee, Carlsbad and North County neighbors, Fallbrook, I live in North Encanto but a lot of our resources as in La Mesa, Lemon Grove, or in the city., I live in the Oak Park neighborhood bordering City Heights to the West, Rolando/ Talmadge to the North, Eastern border is College Ave, southern border is I-94., Inland North County, Lakeside and unincorporated areas within the existing District 2, Magic Back Country, North County, North County San Diego Asian Diaspora, Rainbow, Ramona, Twin Oaks Valley, Valley Center
Municipalities	18	16	89%	Escondido, Santee
Census Designated Places	39	37	95%	La Presa Cdp, Rainbow Cdp
Indian Reservations	19	17	89%	Mesa Grande Reservation, Santa Ysabel Reservation
Military Installations	22	22	100%	
Community Plan Areas (City of San Diego)	57	51	89%	College Area, East Elliott, Mid-city:Eastern Area, Navajo, San Pasqual, Tierrasanta
Community Plan Areas (Non-City of San Diego)	36	23	64%	Bonsall, Desert, Fallbrook, Hidden Meadows, Jamul, North County Metro, North Mountain, Otay, Rainbow, Ramona, Spring Valley, Sweetwater, Twin Oaks
Elementary School Districts	24	14	58%	Gen Elem Cajon Valley Union, Gen Elem Chula Vista, Gen Elem Escondido Union, Gen Elem Fallbrook Union, Gen Elem Julian Union, Gen Elem La Mesa-spring Valley, Gen Elem Lemon Grove, Gen Elem San Pasqual Union, Gen Elem Santee, Gen Elem Vallecitos
High School Districts	6	1	17%	High Escondido Union, High Fallbrook Union, High Grossmont Union, High Julian Union, High Sweetwater Union
Unified School Districts	15	8	53%	Unif Bond Poway-sfid 2002-1,Prop U 11/5/02,2019ref, Unified Bonsall, Unified Borrego Springs, Unified Ramona, Unified San Diego, Unified Valley Center-pauma, Unified Warner

# County of San Diego IRC

## Public Submitted Map 10 --Supervisory Districts Summary Statistics

11/13/2021



COI Category	Total # of COIs	# of COIs Preserved in Minimum Districts	% of COIs Preserved in Minimum Districts	COIs Not Preserved in Minimum # of Districts
Fire Districts	13	10	77%	Deer Springs Fire Protection District, North County Fire Protection District Of Sd County, San Miguel Consol. Fire Protection District
Public Utility Districts	2	2	100%	
Sanitation Districts	4	3	75%	San Diego County Sanitation District L&I
Water Districts	50	38	76%	Helix Water District Land, Otay Water District, Padre Dam Municipal Water District, Rainbow Muni Water Imp Dist B, Rainbow Municipal Water District, Ramona Municipal Water District, Rincon Del Diablo Muni Id.E (Formerly F&G), Rincon Del Diablo Municipal Water District, South Bay Irrigation Land, Vallecitos Water District, Valley Center Municipal Water District, Vista Irrigation Land

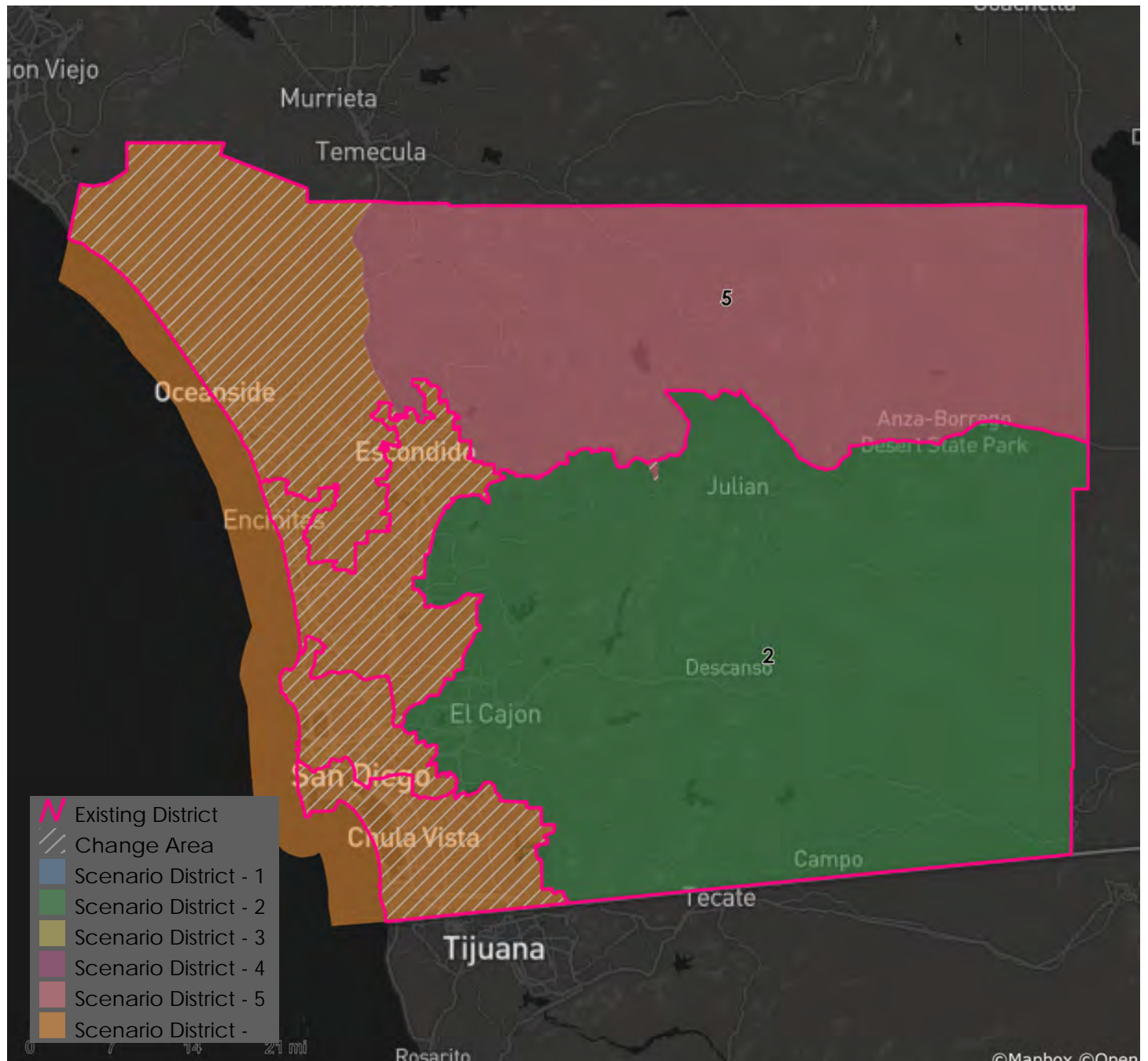
\*Many Community Builder submissions represent multiple COIs or proposed supervisorial districts; therefore, fewer can be reasonably maintained within a single district than other categories (e.g., Census Designated Places).



# County of San Diego IRC

## Public Submitted Map 10 --Supervisory Districts Summary Statistics

11/13/2021



### Metadata

Run Date/Time:	2021-11-18 08:53:55
Workflow Directory:	X:\F2089_San_Diego_County\Projects\Alteryx\
Feature Class:	File: gdb:X:\F2089_San_Diego_County\Data\Redist.gdb\Blocks_2020_02
Scenario:	Districts_PubSub_10