

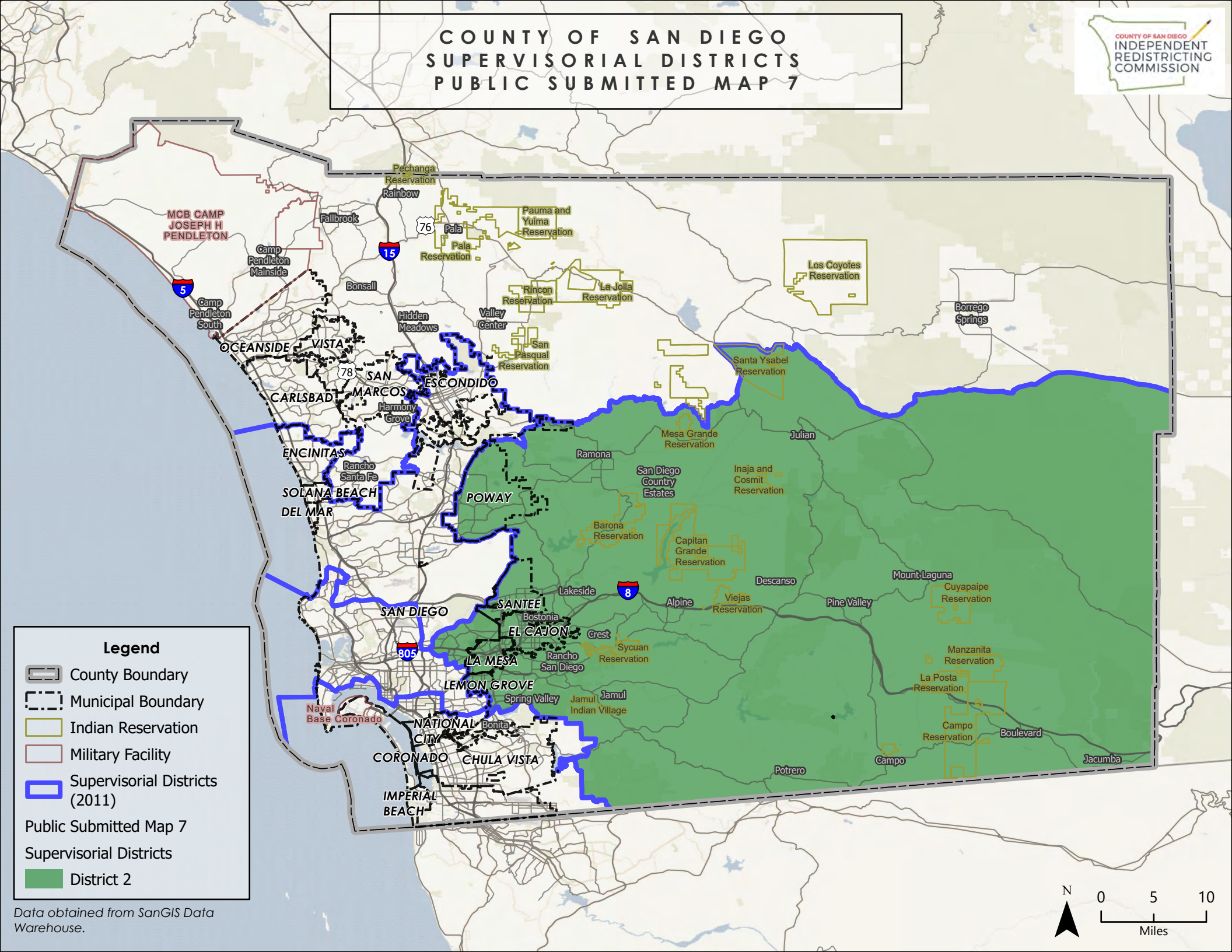
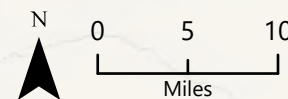
# COUNTY OF SAN DIEGO SUPERVISORIAL DISTRICTS PUBLIC SUBMITTED MAP 7

COUNTY OF SAN DIEGO  
INDEPENDENT  
REDISTRICTING  
COMMISSION

**Legend**

- County Boundary
- Municipal Boundary
- Indian Reservation
- Military Facility
- Supervisory Districts (2011)
- Public Submitted Map 7
- Supervisory Districts
- District 2

Data obtained from SanGIS Data Warehouse.

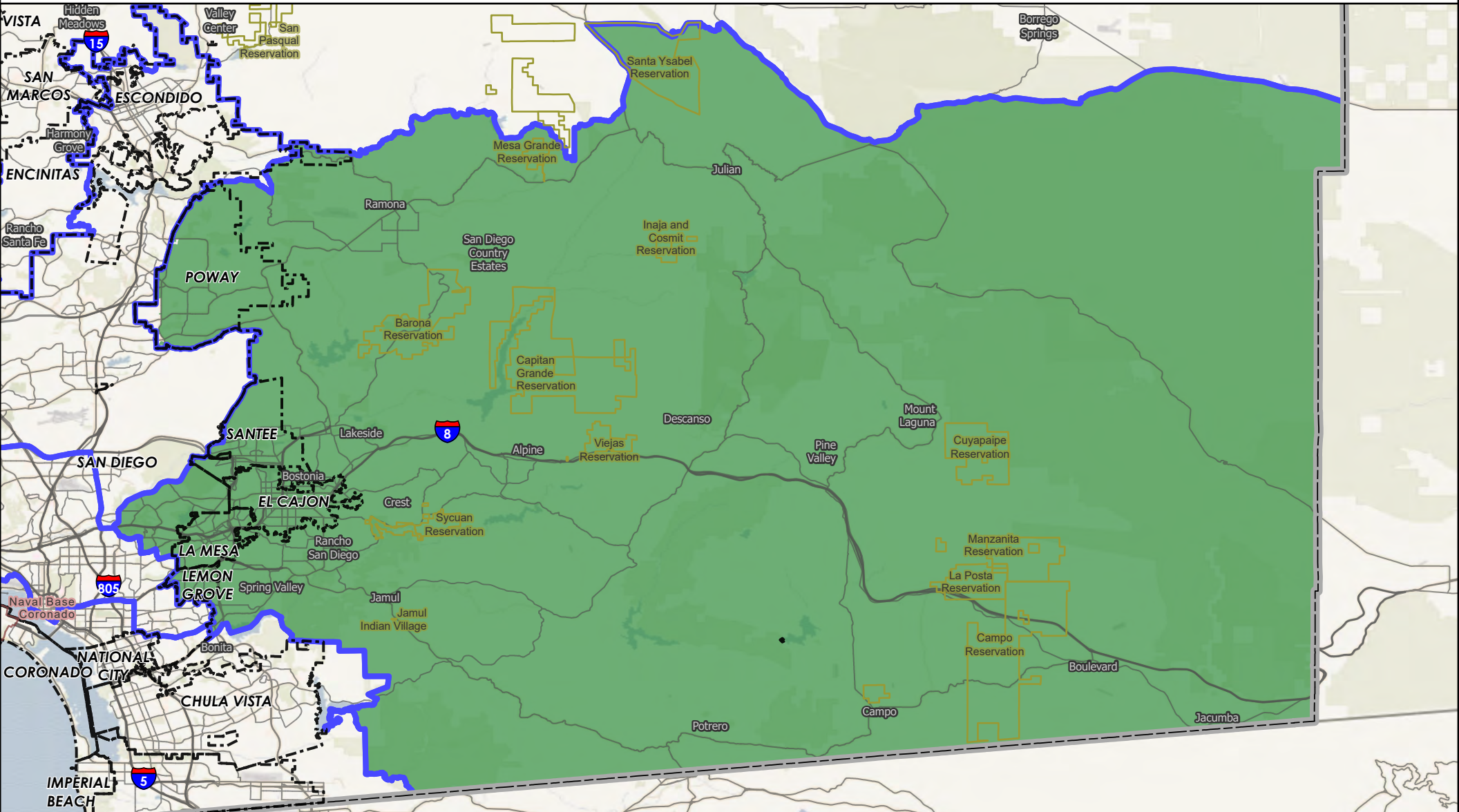




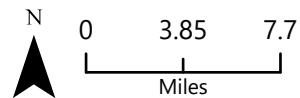
# COUNTY OF SAN DIEGO

## SUPERVISORIAL DISTRICTS - PUBLIC SUBMITTED MAP 7

### DISTRICT 2



- |                                |                         |
|--------------------------------|-------------------------|
| County Boundary                | Public Submitted Map 7  |
| Municipal Boundary             | Supervisorial Districts |
| Indian Reservation             | District 2              |
| Military Facility              |                         |
| Supervisorial Districts (2011) |                         |



# County of San Diego IRC

## Public Submitted Map 7 --Supervisory Districts Summary Statistics

11/6/2021



### Equal Population Criterion

Ideal Population		660,452
Overall Deviation		—
< 5.0%	5.0 - 10.0%	> 10.0%

California Statewide Database Adjusted  
(incarcerated persons reallocation) 2020  
Census P.L. 94-171 Redistricting Data  
Summary Files - Total Population.

### Total Population & Deviation per District

District ID	Total Population	Over / Under Ideal	Deviation From Ideal
	2,641,945	1,981,493	300.0%
2	660,317	-135	0.0%

### Total Population by Race/Ethnicity per District

District ID	White	Black or African American	American Indian or Alaska Native	Asian	Native Hawaiian and Pacific Islander	Some Other Race	Two or More Races	Hispanic/Latino
	40.2%	4.3%	0.3%	13.7%	0.4%	0.6%	4.9%	35.7%
2	54.8%	4.9%	0.6%	5.7%	0.4%	0.6%	5.9%	27.1%

California Statewide Database (CA SWDB) Adjusted 2020 Census P.L. 94-171 Redistricting Data - Total Population by Race and Hispanic/Latino origin.

### VAP by Race/Ethnicity per District

District	White	Black or African American	American Indian or Alaska Native	Asian	Native Hawaiian and Pacific Islander	Some Other Race	Two or More Races	Hispanic/Latino
	43.4%	4.4%	0.3%	14.3%	0.4%	0.5%	4.0%	32.6%
2	58.3%	4.9%	0.6%	6.1%	0.4%	0.5%	4.9%	24.2%

CA SWDB Adjusted 2020 Census P.L. 94-171 Redistricting Data - Voting-age Population (VAP) by Race and Hispanic/Latino origin.

### CVAP by Race/Ethnicity per District

District ID	White	Black or African American	American Indian or Alaska Native	Asian	Native Hawaiian and Pacific Islander	Two or More Races	Hispanic/Latino
	51.2%	5.3%	0.4%	12.3%	0.4%	2.6%	27.6%
2	65.5%	5.3%	0.5%	5.2%	0.4%	3.0%	19.9%

# County of San Diego IRC

## Public Submitted Map 7 --Supervisory Districts Summary Statistics

11/6/2021



---

CA SWDB Adjusted 2015-2019 American Community Survey Citizen Voting-age Population (CVAP) by Race and Ethnicity Special Tabulation. Rounding may lead to summation of percentages not equal to 100% (+/- 1%).

### **Criteria Specific to the County of San Diego**

**At least three districts shall include unincorporated territory.**

Number of districts that include unincorporated territory: **2**

Districts that include unincorporated territory:

#### **District**

##### **District 2**

**Two districts must be comprised of primarily unincorporated territory.**

Number of districts that are primarily unincorporated territory: **2**

Districts that are primarily unincorporated territory:

#### **District**

##### **District 2**

# County of San Diego IRC

## Public Submitted Map 7 --Supervisory Districts Summary Statistics

11/6/2021



### Preservation of Geographic Integrity Criteria (i.e., minimize division of cities, communities of interest, etc.)

COI Category	Total # of COIs	# of COIs Preserved in Minimum Districts	% of COIs Preserved in Minimum Districts	COIs Not Preserved in Minimum # of Districts
*Community Builder spatial-submitted COIs	27	15	56%	78 Cooridor, BIPOC Immigrant & Refugee Communities, BIPOC, Immigrant & Refugee, Carlsbad and North County neighbors, I live in North Encanto but a lot of our resources as in La Mesa, Lemon Grove, or in the city., I live in the Oak Park neighborhood bordering City Heights to the West, Rolando/ Talmadge to the North, Eastern border is College Ave, southern border is I-94., Inland North County, Lakeside and unincorporated areas within the existing District 2, Magic Back Country, North County, North County San Diego Asian Diaspora, Ramona
Municipalities	18	14	78%	Lemon Grove, Poway, San Diego, Santee
Census Designated Places	39	38	97%	La Presa Cdp
Indian Reservations	19	17	89%	Mesa Grande Reservation, Santa Ysabel Reservation
Military Installations	22	22	100%	
Community Plan Areas (City of San Diego)	57	51	89%	College Area, East Elliott, Mid-city:Eastern Area, Navajo, San Pasqual, Tierrasanta
Community Plan Areas (Non-City of San Diego)	36	28	78%	Desert, Jamul, North County Metro, North Mountain, Otay, Ramona, Spring Valley, Sweetwater
Elementary School Districts	24	17	71%	Gen Elem Cajon Valley Union, Gen Elem Chula Vista, Gen Elem Julian Union, Gen Elem La Mesa-spring Valley, Gen Elem Lemon Grove, Gen Elem San Pasqual Union, Gen Elem Santee
High School Districts	6	2	33%	High Escondido Union, High Grossmont Union, High Julian Union, High Sweetwater Union
Unified School Districts	15	9	60%	Unif Bond Poway-sfid 2002-1,Prop U 11/5/02,2019ref, Unified Borrego Springs, Unified Ramona, Unified San Diego, Unified Valley Center-pauma, Unified Warner
Fire Districts	13	12	92%	San Miguel Consol. Fire Protection District
Public Utility Districts	2	2	100%	

# County of San Diego IRC

## Public Submitted Map 7 --Supervisory Districts Summary Statistics

11/6/2021



COI Category	Total # of COIs	# of COIs Preserved in Minimum Districts	% of COIs Preserved in Minimum Districts	COIs Not Preserved in Minimum # of Districts
Sanitation Districts	4	2	50%	Lemon Grove Sanitation District L&I, San Diego County Sanitation District L&I
Water Districts	50	45	90%	Helix Water District Land, Otay Water District, Padre Dam Municipal Water District, Ramona Municipal Water District, South Bay Irrigation Land

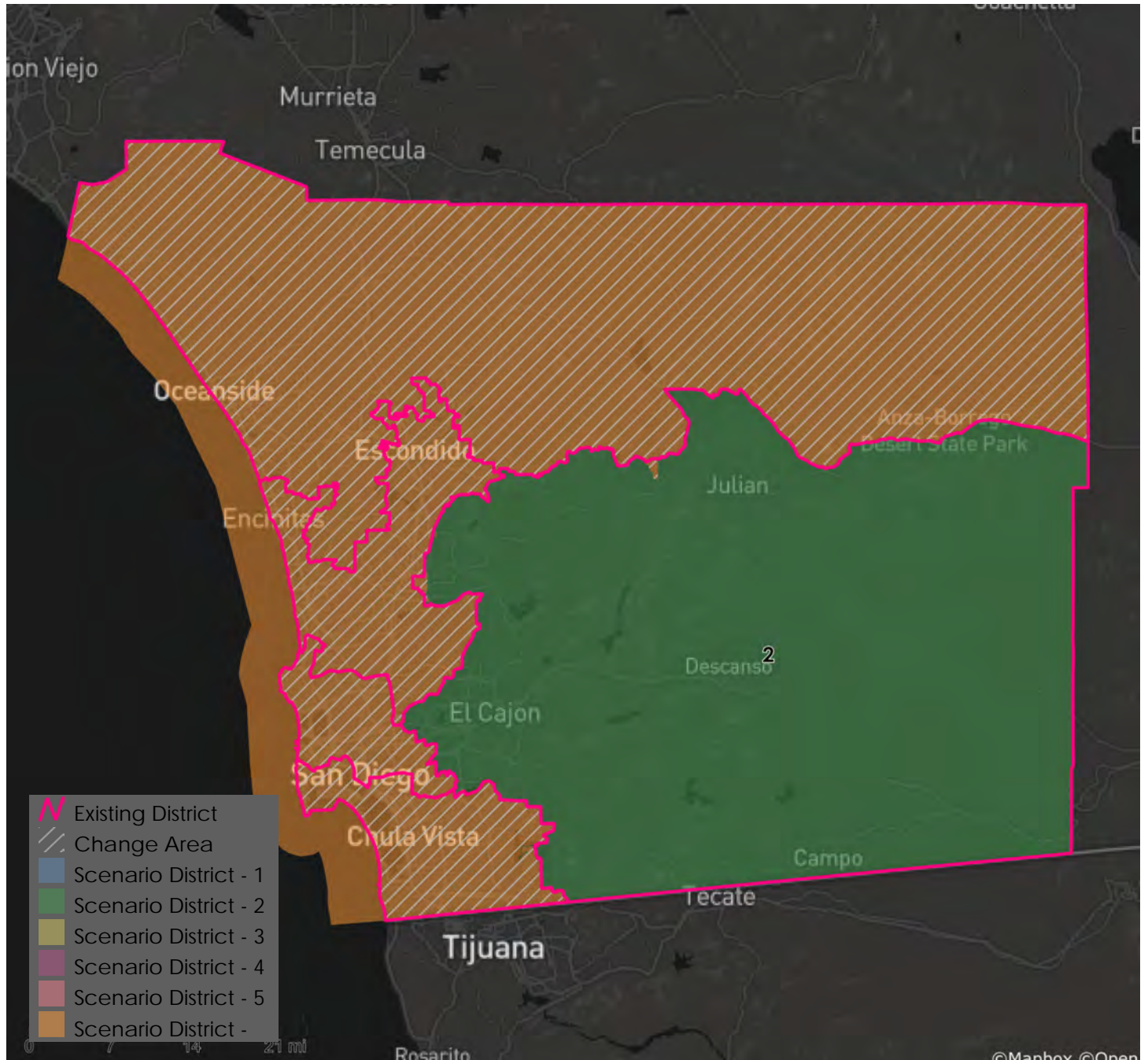
\*Many Community Builder submissions represent multiple COIs or proposed supervisorial districts; therefore, fewer can be reasonably maintained within a single district than other categories (e.g., Census Designated Places).



# County of San Diego IRC

## Public Submitted Map 7 --Supervisory Districts Summary Statistics

11/6/2021



### Metadata

Run Date/Time:	2021-11-17 21:23:45
Workflow Directory:	X:\F2089_San_Diego_County\Projects\Alteryx\
Feature Class:	File: gdb:X:\F2089_San_Diego_County\Data\Redist.gdb\Blocks_2020_02
Scenario:	Districts_PubSub_7