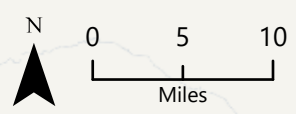
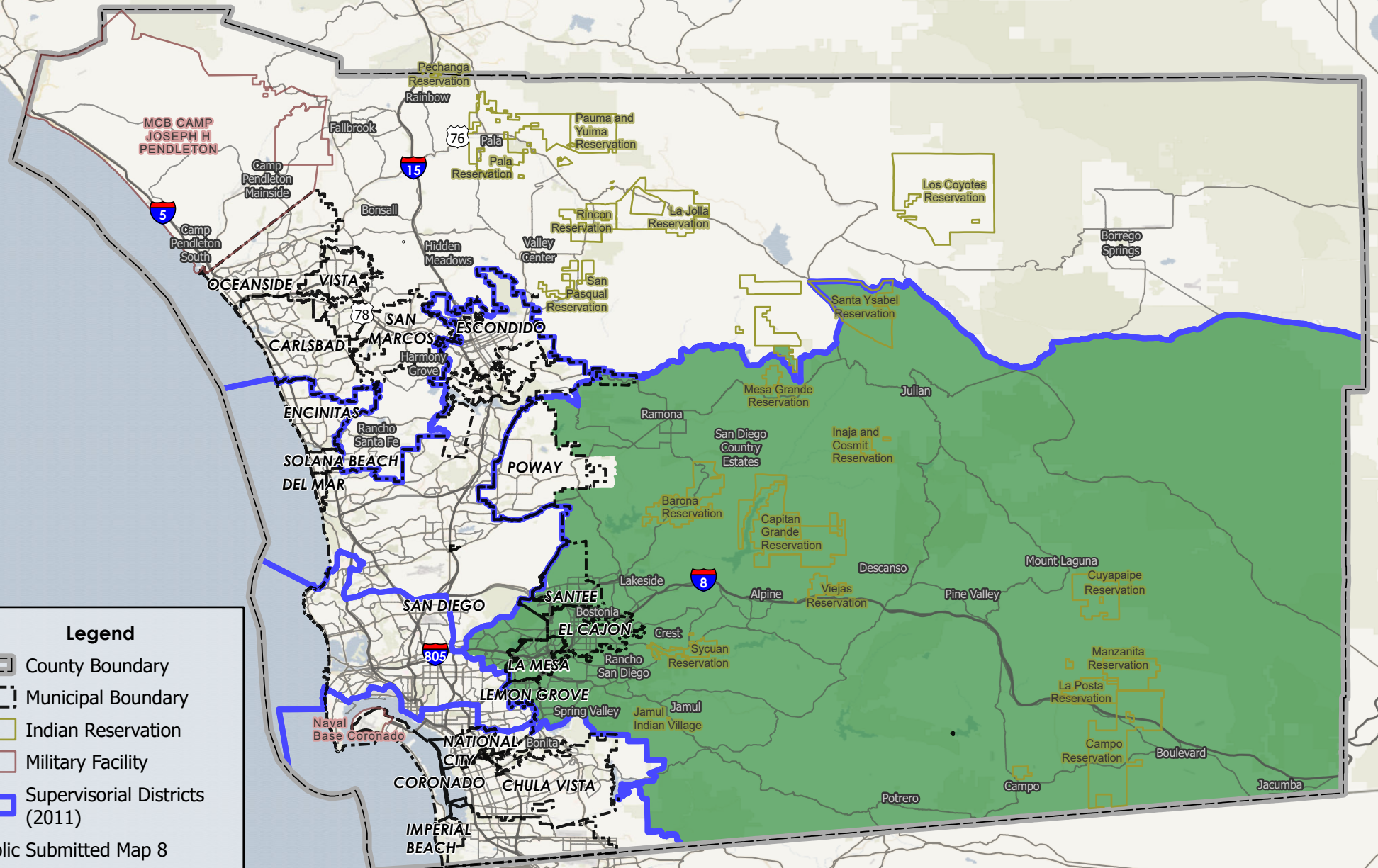


# COUNTY OF SAN DIEGO SUPERVISORIAL DISTRICTS PUBLIC SUBMITTED MAP 8



**Legend**

- County Boundary
- Municipal Boundary
- Indian Reservation
- Military Facility
- Supervisory Districts (2011)
- Public Submitted Map 8 Supervisory Districts
- District 2

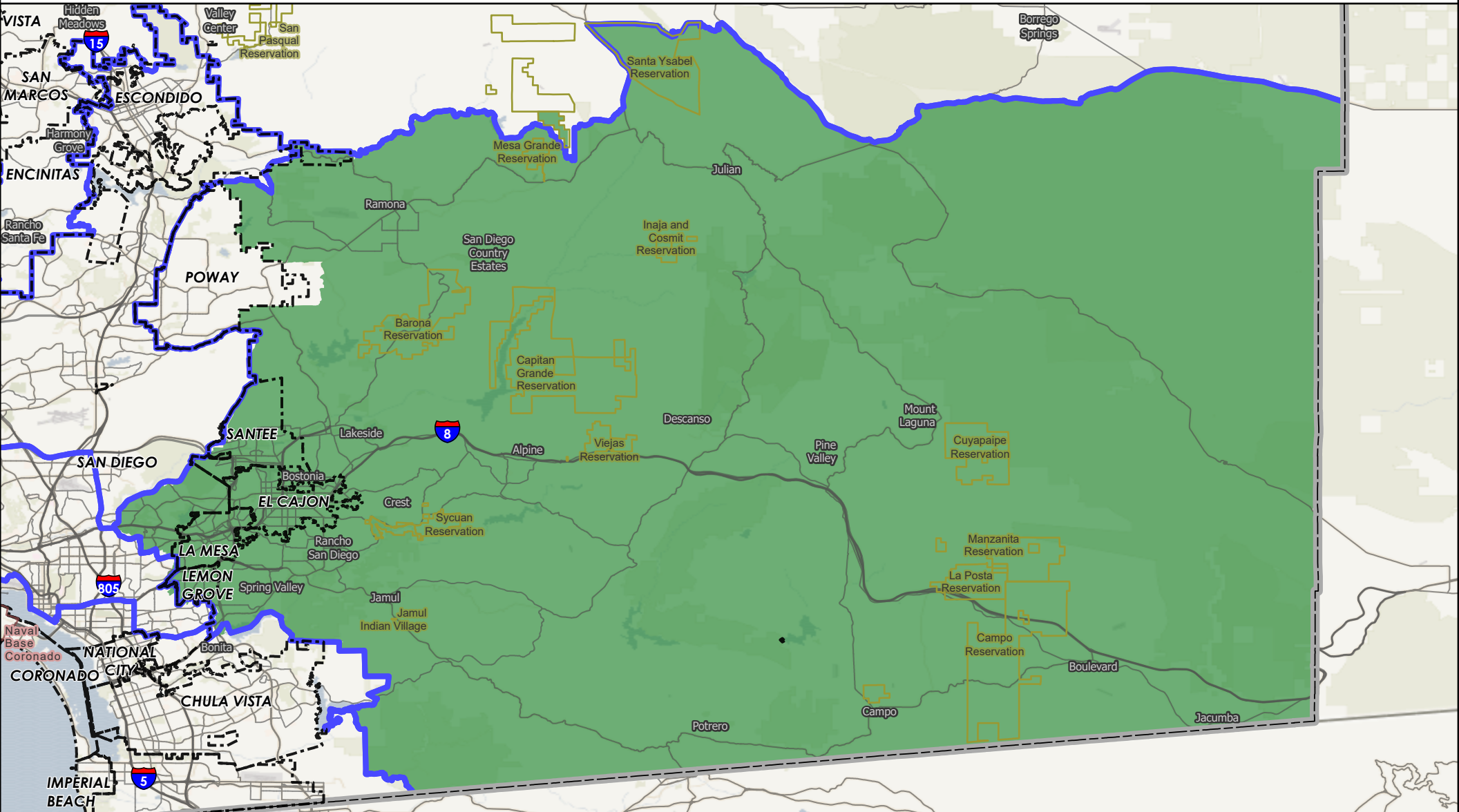


Data obtained from SanGIS Data Warehouse.

# COUNTY OF SAN DIEGO

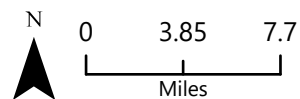
## SUPERVISORIAL DISTRICTS - PUBLIC SUBMITTED MAP 8

### DISTRICT 2



- County Boundary
- Municipal Boundary
- Indian Reservation
- Military Facility
- Supervisorial Districts (2011)
- Public Submitted Map 8
- Supervisorial Districts
- District 2

Data obtained from SanGIS Data Warehouse.



### Equal Population Criterion

Ideal Population	660,452	
Overall Deviation	—	
< 5.0%	5.0 - 10.0%	> 10.0%

California Statewide Database Adjusted  
(incarcerated persons reallocation) 2020  
Census P.L. 94-171 Redistricting Data  
Summary Files - Total Population.

### Total Population & Deviation per District

District ID	Total Population	Over / Under Ideal	Deviation From Ideal
	2,690,622	2,030,170	307.4%
2	611,640	-48,812	-7.4%

### Total Population by Race/Ethnicity per District

District ID	White	Black or African American	American Indian or Alaska Native	Asian	Native Hawaiian and Pacific Islander	Some Other Race	Two or More Races	Hispanic/Latino
	40.5%	4.2%	0.3%	13.7%	0.4%	0.6%	4.9%	35.3%
2	54.3%	5.3%	0.6%	5.1%	0.4%	0.6%	5.8%	27.8%

California Statewide Database (CA SWDB) Adjusted 2020 Census P.L. 94-171 Redistricting Data - Total Population by Race and Hispanic/Latino origin.

### VAP by Race/Ethnicity per District

District	White	Black or African American	American Indian or Alaska Native	Asian	Native Hawaiian and Pacific Islander	Some Other Race	Two or More Races	Hispanic/Latino
	43.8%	4.3%	0.3%	14.3%	0.4%	0.5%	4.0%	32.3%
2	57.8%	5.3%	0.6%	5.5%	0.4%	0.6%	4.9%	25.0%

CA SWDB Adjusted 2020 Census P.L. 94-171 Redistricting Data - Voting-age Population (VAP) by Race and Hispanic/Latino origin.

### CVAP by Race/Ethnicity per District

District ID	White	Black or African American	American Indian or Alaska Native	Asian	Native Hawaiian and Pacific Islander	Two or More Races	Hispanic/Latino
	51.6%	5.2%	0.4%	12.3%	0.4%	2.6%	27.3%
2	64.9%	5.6%	0.6%	4.7%	0.4%	3.0%	20.7%

# County of San Diego IRC

## Public Submitted Map 8 – Supervisorial Districts Summary Statistics

11/4/2021



---

CA SWDB Adjusted 2015-2019 American Community Survey Citizen Voting-age Population (CVAP) by Race and Ethnicity Special Tabulation. Rounding may lead to summation of percentages not equal to 100% (+/- 1%).

### **Criteria Specific to the County of San Diego**

**At least three districts shall include unincorporated territory.**

Number of districts that include unincorporated territory: **2**

Districts that include unincorporated territory:

#### **District**

##### **District 2**

**Two districts must be comprised of primarily unincorporated territory.**

Number of districts that are primarily unincorporated territory: **2**

Districts that are primarily unincorporated territory:

#### **District**

##### **District 2**



### Preservation of Geographic Integrity Criteria (i.e., minimize division of cities, communities of interest, etc.)

COI Category	Total # of COIs	# of COIs Preserved in Minimum Districts	% of COIs Preserved in Minimum Districts	COIs Not Preserved in Minimum # of Districts
*Community Builder spatial-submitted COIs	27	15	56%	78 Cooridor, BIPOC Immigrant & Refugee Communities, BIPOC, Immigrant & Refugee, Carlsbad and North County neighbors, I live in North Encanto but a lot of our resources as in La Mesa, Lemon Grove, or in the city., I live in the Oak Park neighborhood bordering City Heights to the West, Rolando/ Talmadge to the North, Eastern border is College Ave, southern border is I-94., Inland North County, Lakeside and unincorporated areas within the existing District 2, Magic Back Country, North County, North County San Diego Asian Diaspora, Ramona
Municipalities	18	15	83%	Lemon Grove, San Diego, Santee
Census Designated Places	39	37	95%	Jacumba Cdp, La Presa Cdp
Indian Reservations	19	17	89%	Mesa Grande Reservation, Santa Ysabel Reservation
Military Installations	22	21	95%	Mcas Miramar
Community Plan Areas (City of San Diego)	57	48	84%	College Area, East Elliott, Encanto Neighborhoods, Mid-city: Eastern Area, Military Facilities, Navajo, San Pasqual, Skyline-paradise Hills, Tierrasanta
Community Plan Areas (Non-City of San Diego)	36	25	69%	Desert, Jacumba, Jamul, Lakeside, Mountain Empire, North County Metro, North Mountain, Otay, Ramona, Spring Valley, Sweetwater
Elementary School Districts	24	17	71%	Gen Elem Cajon Valley Union, Gen Elem Chula Vista, Gen Elem Julian Union, Gen Elem La Mesa-spring Valley, Gen Elem Lemon Grove, Gen Elem San Pasqual Union, Gen Elem Santee
High School Districts	6	2	33%	High Escondido Union, High Grossmont Union, High Julian Union, High Sweetwater Union
Unified School Districts	15	8	53%	Unif Bond Poway-sfid 2002-1, Prop U 11/5/02, 2019ref, Unified Borrego Springs, Unified Mt Empire, Unified Ramona, Unified San Diego, Unified Valley Center-pauma, Unified Warner
Fire Districts	13	12	92%	San Miguel Consol. Fire Protection District
Public Utility Districts	2	2	100%	

# County of San Diego IRC

## Public Submitted Map 8 – Supervisorial Districts Summary Statistics

11/4/2021



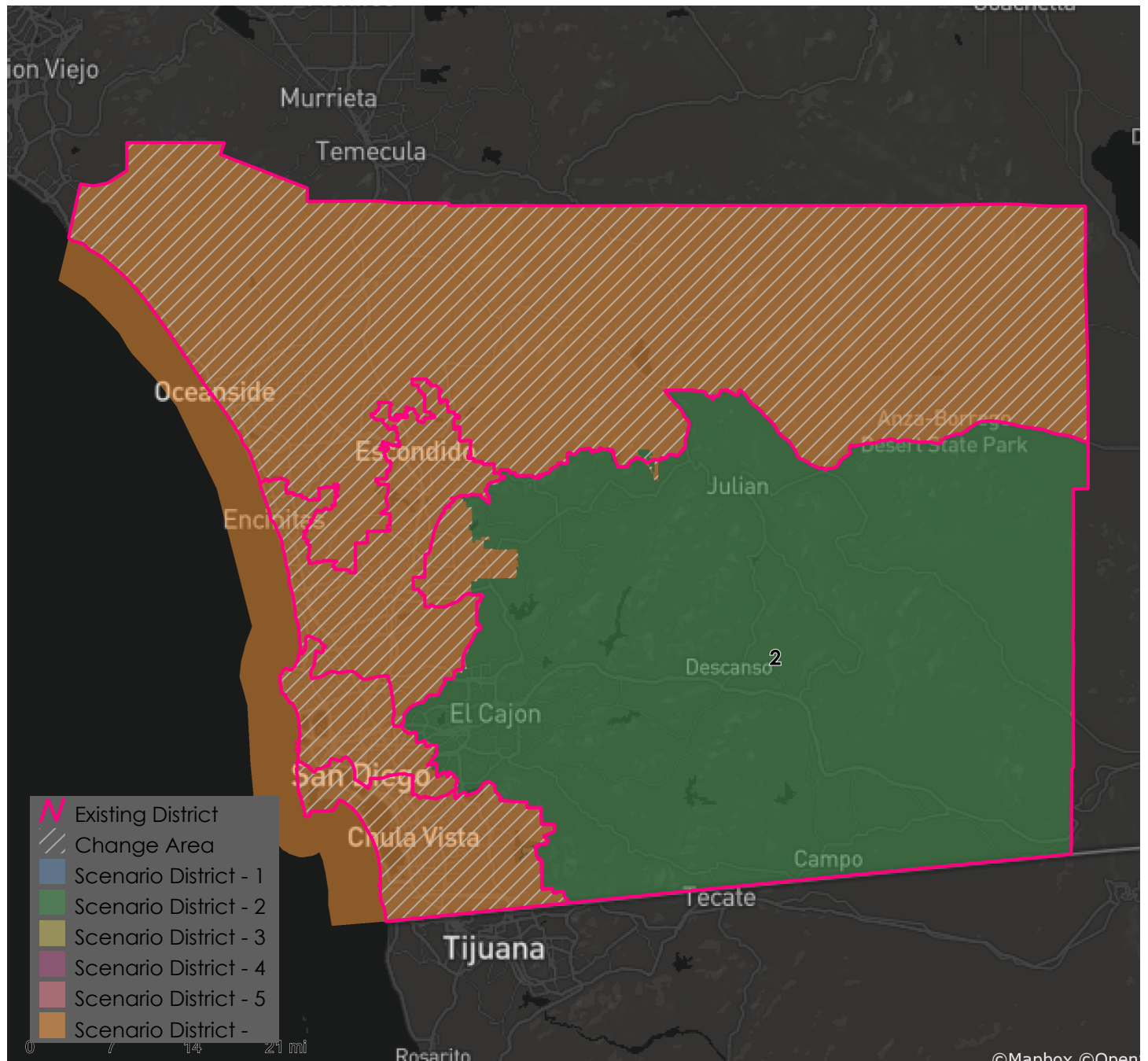
COI Category	Total # of COIs	# of COIs Preserved in Minimum Districts	% of COIs Preserved in Minimum Districts	COIs Not Preserved in Minimum # of Districts
Sanitation Districts	4	2	50%	Lemon Grove Sanitation District L&I, San Diego County Sanitation District L&I
Water Districts	50	45	90%	Helix Water District Land, Otay Water District, Padre Dam Municipal Water District, Ramona Municipal Water District, South Bay Irrigation Land

\*Many Community Builder submissions represent multiple COIs or proposed supervisorial districts; therefore, fewer can be reasonably maintained within a single district than other categories (e.g., Census Designated Places).

# County of San Diego IRC

## Public Submitted Map 8 – Supervisorial Districts Summary Statistics

11/4/2021



### Metadata

Run Date/Time:	2021-11-17 22:23:47
Workflow Directory:	X:\F2089_San_Diego_County\Projects\Alteryx\
Feature Class:	File: gdb:X:\F2089_San_Diego_County\Data\Redist.gdb\Blocks_2020_02
Scenario:	Districts_PubSub_8