

---

### **County of San Diego IRC Approved Mapping Motion 11/13/21**

ON MOTION of Commissioner Surban, seconded by Commissioner Diaz, the Commission approved the following direction to FLO Analytics regarding Draft Map 10:

- Address contiguity between Coronado and District 4 via ferry landing at Broadway Pier/Convention Center.
- FLO to respect Community Planning Areas where possible including Alpine, Bonsall, Crest, Descanso, Hidden Meadows, Lakeside, County Metro and others identified as split in the table included with summary statistics.
- Adjust District 2 to rebalance/reproportion CVAP to reduce the variance without significantly impacting surrounding districts.

*Please note the district numbers in this map do not correspond to the numbers of existing supervisorial districts. District numbers from prior IRC draft maps have been adjusted to more closely align with population density of existing district boundaries to the extent possible.*

# COUNTY OF SAN DIEGO SUPERVISORIAL DISTRICTS DRAFT MAP 14 - 11/13/2021 MEETING



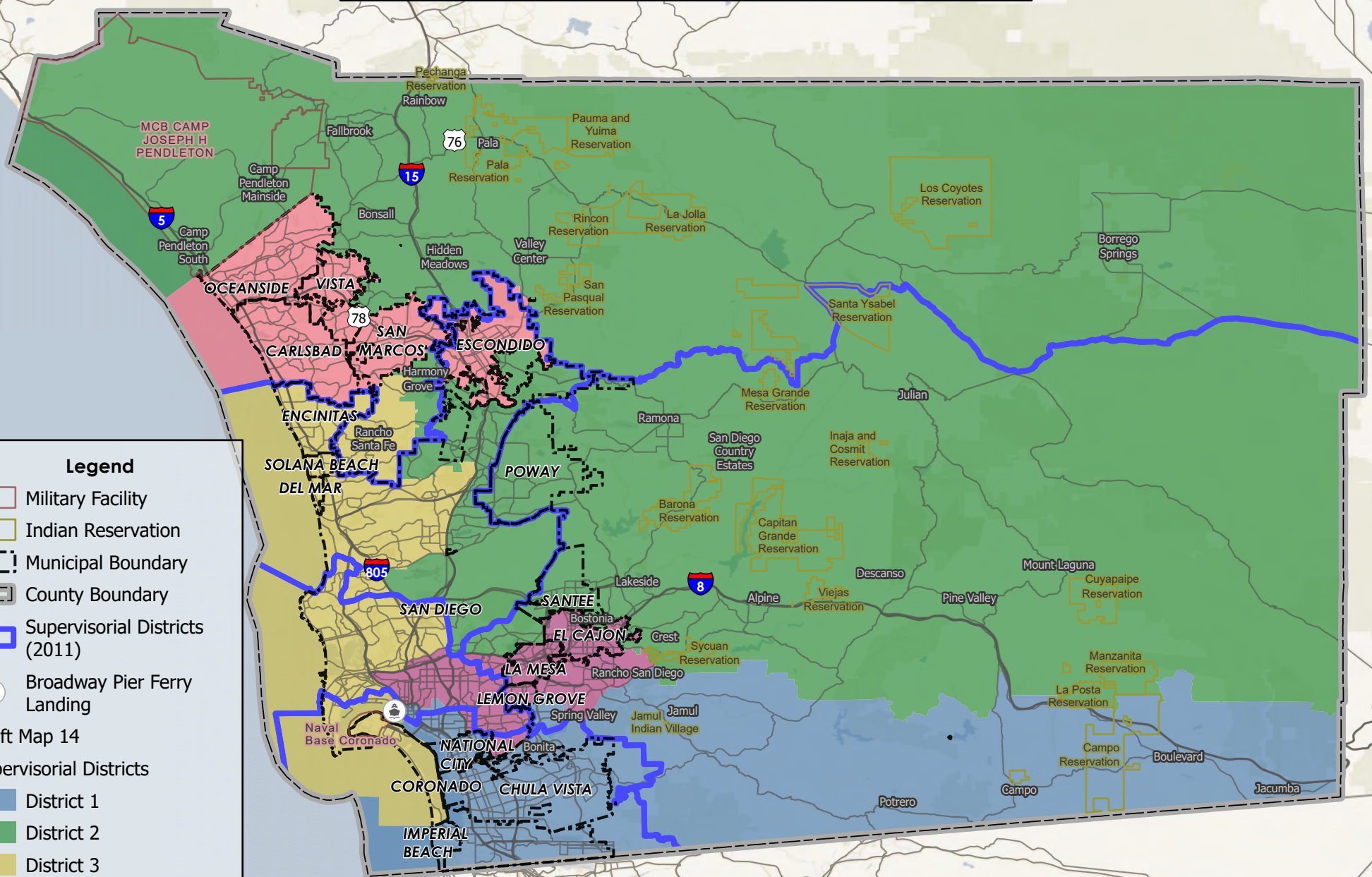
**Legend**

- Military Facility
- Indian Reservation
- Municipal Boundary
- County Boundary
- Supervisory Districts (2011)
- Broadway Pier Ferry Landing

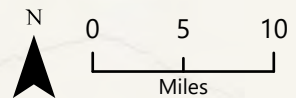
Draft Map 14

Supervisory Districts

- District 1
- District 2
- District 3
- District 4
- District 5



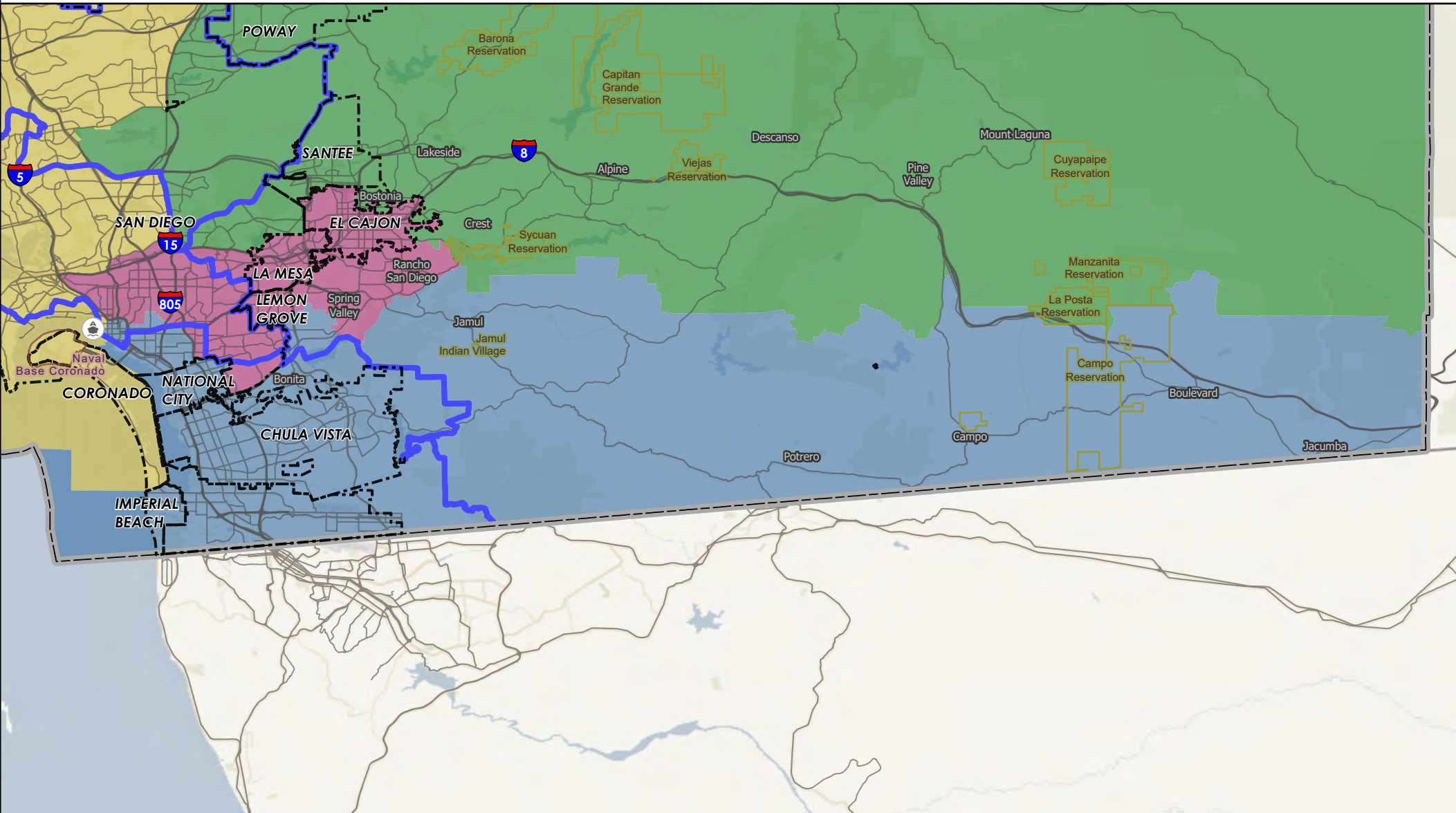
Data obtained from SanGIS Data Warehouse.



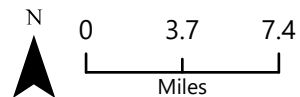
# COUNTY OF SAN DIEGO

## SUPERVISORIAL DISTRICTS - DRAFT MAP 14 - 11/13/2021 MEETING

### DISTRICT 1



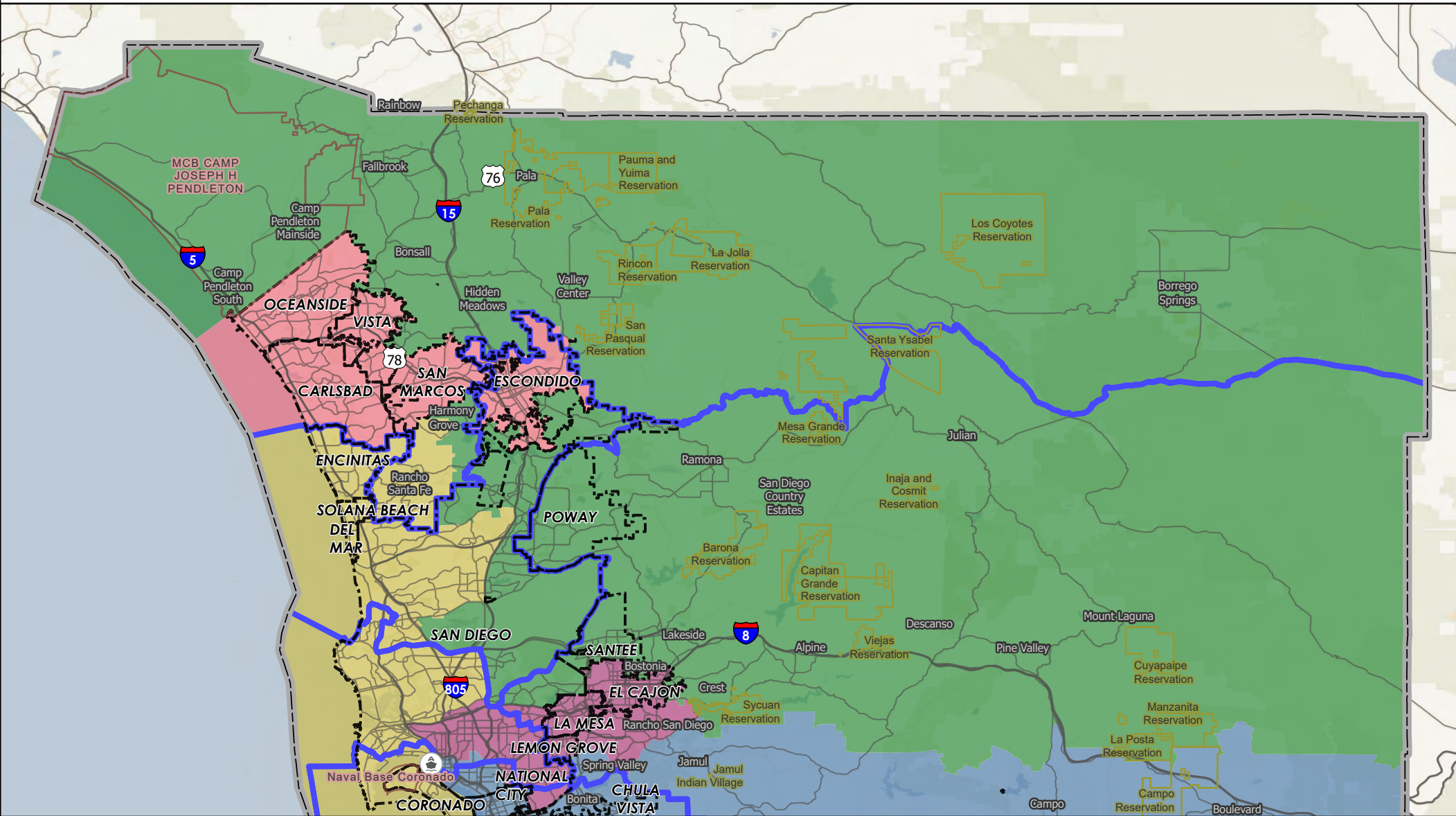
- |                                |                         |
|--------------------------------|-------------------------|
| Military Facility              | Draft Map 14            |
| Indian Reservation             | Supervisorial Districts |
| Municipal Boundary             | District 1              |
| County Boundary                | District 2              |
| Supervisorial Districts (2011) | District 3              |
| Broadway Pier Ferry Landing    | District 4              |
|                                | District 5              |



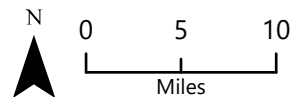
# COUNTY OF SAN DIEGO

## SUPERVISORIAL DISTRICTS - DRAFT MAP 14 - 11/13/2021 MEETING

### DISTRICT 2



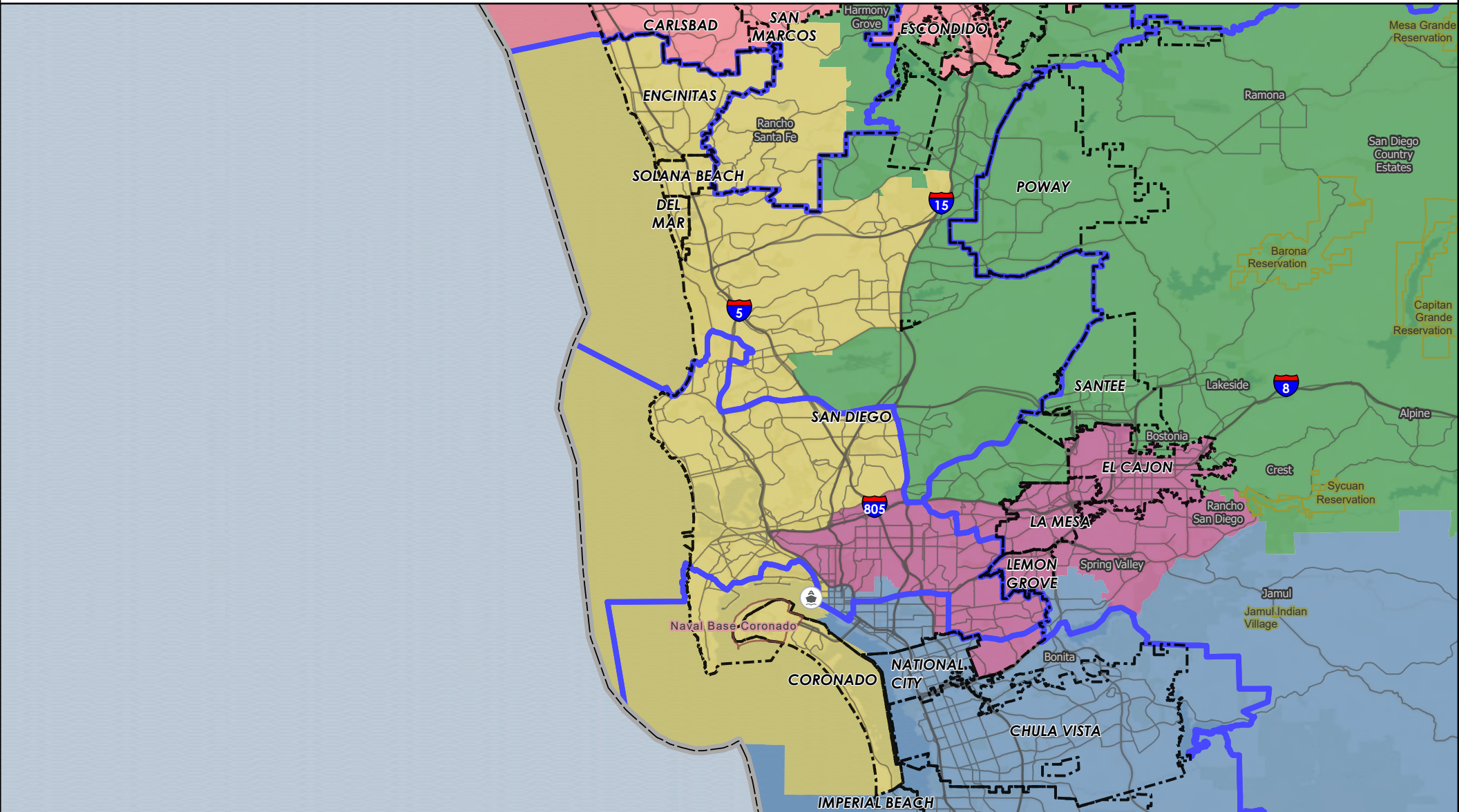
- |                                |                         |
|--------------------------------|-------------------------|
| Military Facility              | Draft Map 14            |
| Indian Reservation             | Supervisorial Districts |
| Municipal Boundary             | District 1              |
| County Boundary                | District 2              |
| Supervisorial Districts (2011) | District 3              |
| Broadway Pier Ferry Landing    | District 4              |
|                                | District 5              |



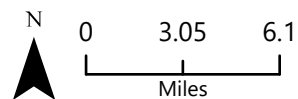
# COUNTY OF SAN DIEGO

## SUPERVISORIAL DISTRICTS - DRAFT MAP 14 - 11/13/2021 MEETING

### DISTRICT 3



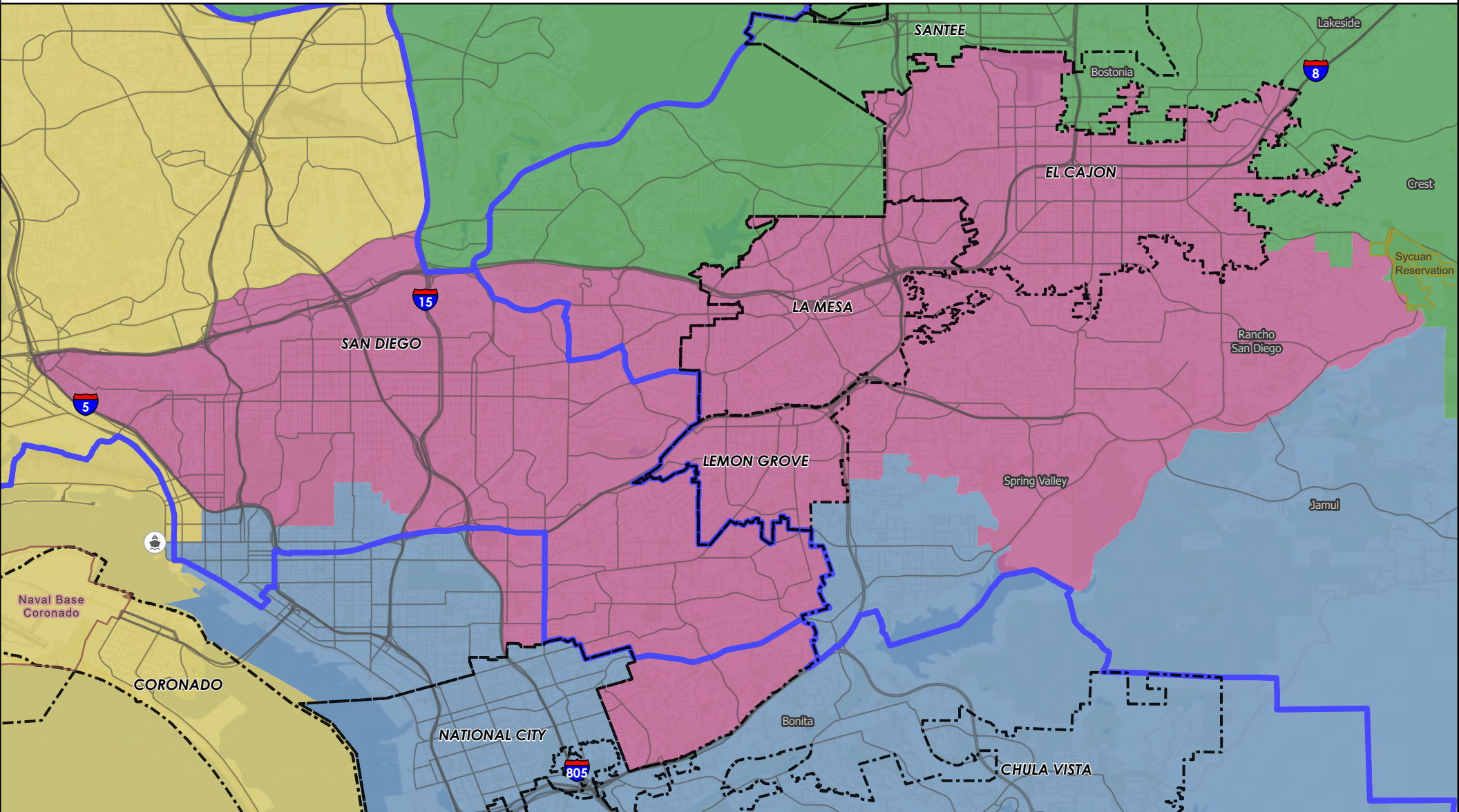
- |                                |                         |
|--------------------------------|-------------------------|
| Military Facility              | Draft Map 14            |
| Indian Reservation             | Supervisorial Districts |
| Municipal Boundary             | District 1              |
| County Boundary                | District 2              |
| Supervisorial Districts (2011) | District 3              |
| Broadway Pier Ferry Landing    | District 4              |
|                                | District 5              |



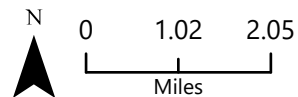
# COUNTY OF SAN DIEGO

## SUPERVISORIAL DISTRICTS - DRAFT MAP 14 - 11/13/2021 MEETING

### DISTRICT 4



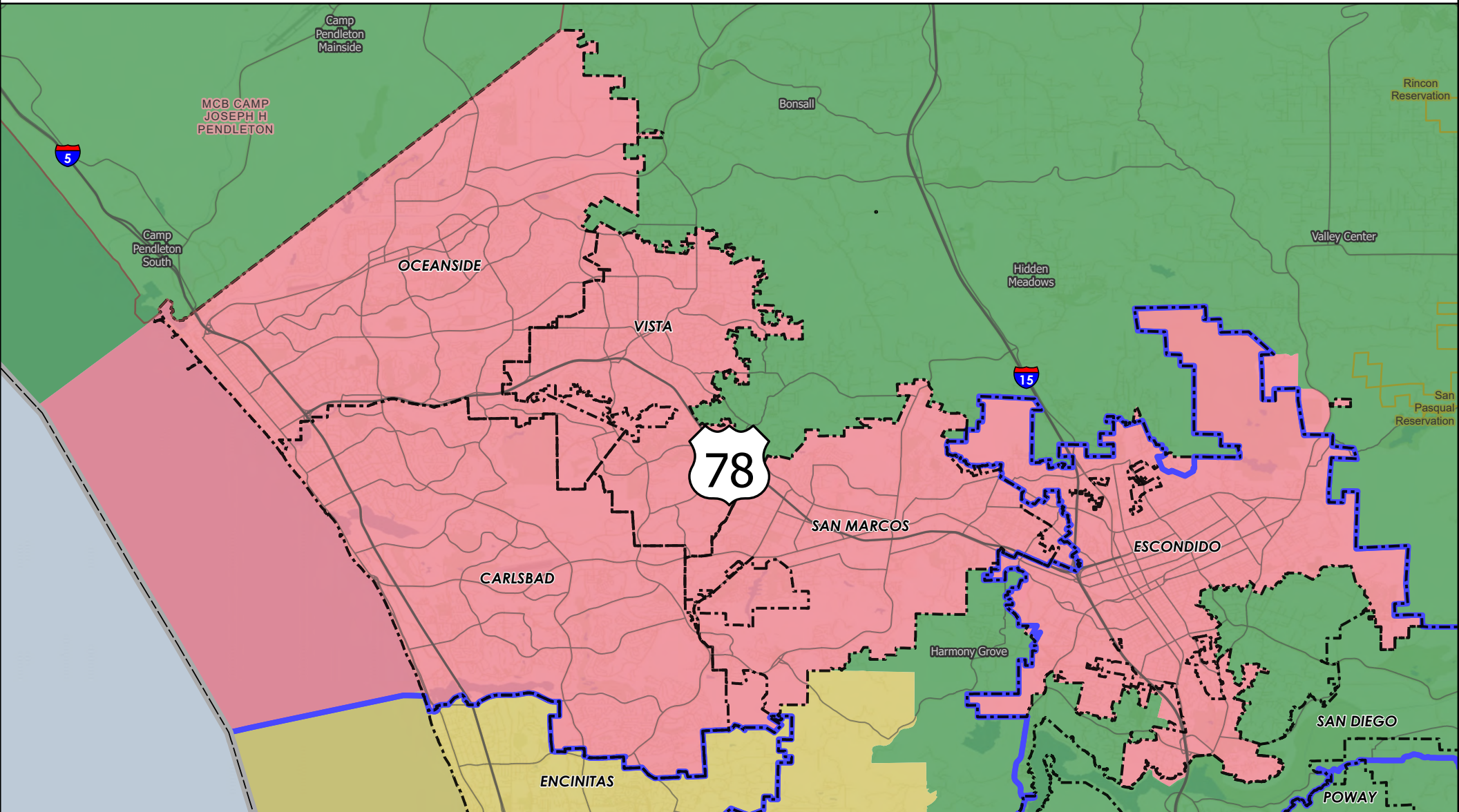
- |                                |                         |
|--------------------------------|-------------------------|
| Military Facility              | Draft Map 14            |
| Indian Reservation             | Supervisorial Districts |
| Municipal Boundary             | District 1              |
| County Boundary                | District 2              |
| Supervisorial Districts (2011) | District 3              |
| Broadway Pier Ferry Landing    | District 4              |
|                                | District 5              |



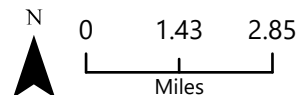
# COUNTY OF SAN DIEGO

## SUPERVISORIAL DISTRICTS - DRAFT MAP 14 - 11/13/2021 MEETING

### DISTRICT 5



- |                              |                       |
|------------------------------|-----------------------|
| Military Facility            | Draft Map 14          |
| Indian Reservation           | Supervisory Districts |
| Municipal Boundary           | District 1            |
| County Boundary              | District 2            |
| Supervisory Districts (2011) | District 3            |
|                              | District 4            |
|                              | District 5            |



# County of San Diego IRC

## Draft Map 14 – Supervisorial Districts Summary Statistics

11/13/2021



### Equal Population Criterion

Ideal Population		660,452
Overall Deviation		5.8%
< 5.0%	5.0 - 10.0%	> 10.0%

California Statewide Database Adjusted  
(incarcerated persons reallocation) 2020  
Census P.L. 94-171 Redistricting Data  
Summary Files - Total Population.

### Total Population & Deviation per District

District ID	Total Population	Over / Under Ideal	Deviation From Ideal
1	658,803	-1,649	-0.2%
2	667,533	7,081	1.1%
3	683,902	23,450	3.6%
4	645,604	-14,848	-2.2%
5	646,420	-14,032	-2.1%

### Total Population by Race/Ethnicity per District

District ID	White	Black or African American	American Indian or Alaska Native	Asian	Native Hawaiian and Pacific Islander	Some Other Race	Two or More Races	Hispanic/Latino
1	18.6%	5.2%	0.3%	11.3%	0.4%	0.5%	3.5%	60.3%
2	57.3%	2.7%	0.9%	10.4%	0.3%	0.6%	5.8%	22.0%
3	55.0%	2.5%	0.2%	19.6%	0.3%	0.7%	6.1%	15.7%
4	38.5%	9.3%	0.3%	11.4%	0.5%	0.6%	5.0%	34.4%
5	45.4%	2.4%	0.3%	7.7%	0.5%	0.5%	5.0%	38.2%

California Statewide Database (CA SWDB) Adjusted 2020 Census P.L. 94-171 Redistricting Data - Total Population by Race and Hispanic/Latino origin.

### VAP by Race/Ethnicity per District

District	White	Black or African American	American Indian or Alaska Native	Asian	Native Hawaiian and Pacific Islander	Some Other Race	Two or More Races	Hispanic/Latino
1	21.2%	5.5%	0.3%	12.1%	0.4%	0.4%	3.0%	57.1%
2	60.8%	2.8%	0.9%	10.4%	0.4%	0.5%	4.5%	19.8%
3	57.3%	2.6%	0.2%	19.8%	0.3%	0.6%	4.8%	14.4%
4	41.8%	9.1%	0.3%	12.1%	0.5%	0.5%	4.3%	31.3%
5	49.3%	2.6%	0.3%	8.3%	0.5%	0.5%	4.1%	34.3%

CA SWDB Adjusted 2020 Census P.L. 94-171 Redistricting Data - Voting-age Population (VAP) by Race and Hispanic/Latino origin.

### CVAP by Race/Ethnicity per District

District ID	White	Black or African American	American Indian or Alaska Native	Asian	Native Hawaiian and Pacific Islander	Two or More Races	Hispanic/Latino
1	26.5%	6.7%	0.2%	12.5%	0.6%	2.1%	51.3%
2	68.9%	3.0%	0.9%	8.1%	0.2%	2.7%	15.9%
3	65.3%	2.9%	0.2%	15.2%	0.3%	3.0%	12.9%
4	48.2%	11.0%	0.2%	10.7%	0.5%	3.0%	26.2%
5	58.2%	3.2%	0.4%	7.1%	0.4%	2.7%	27.7%

CA SWDB Adjusted 2015-2019 American Community Survey Citizen Voting-age Population (CVAP) by Race and Ethnicity Special Tabulation. Rounding may lead to summation of percentages not equal to 100% (+/- 1%).

### Criteria Specific to the County of San Diego

**At least three districts shall include unincorporated territory.**

Number of districts that include unincorporated territory: **5**

Districts that include unincorporated territory:

**District 1**

**District 2**

**District 3**

**District 4**

**District 5**

**Two districts must be comprised of primarily unincorporated territory.**

Number of districts that are primarily unincorporated territory: **2**

Districts that are primarily unincorporated territory:

**District 1**

**District 2**

### Preservation of Geographic Integrity Criteria (i.e., minimize division of cities, communities of interest, etc.)

COI Category	Total # of COIs	# of COIs Preserved in Minimum Districts	% of COIs Preserved in Minimum Districts	COIs Not Preserved in Minimum # of Districts
*Community Builder spatial-submitted COIs	20	7	35%	78 Cooridor, AAPI communities, BIPOC Immigrant & Refugee Communities, BIPOC Immigrant and Refugee, BIPOC, Immigrant & Refugee, Carlsbad and North County neighbors, Fallbrook, I live in North Encanto but a lot of our resources as in La Mesa, Lemon Grove, or in the city., Inland North County, North County San Diego Asian Diaspora, South Bay, Twin Oaks Valley, Valley Center
Municipalities	18	17	94%	San Diego
Census Designated Places	39	38	97%	Rancho San Diego Cdp
Indian Reservations	19	19	100%	
Military Installations	22	20	91%	Field Industrial Supply Center, Mcas Miramar
Community Plan Areas (City of San Diego)	57	53	93%	Downtown, Military Facilities, Mission Valley, Reserve
Community Plan Areas (Non-City of San Diego)	36	26	72%	Bonsall, Boulevard, County Islands, Hidden Meadows, Lake Morena / Campo, Mountain Empire, North County Metro, San Dieguito, Spring Valley, Valle De Oro
Elementary School Districts	24	12	50%	Gen Bond Solana Beach-sfid2016-1a Meas Jj 11/08/16, Gen Elem Cajon Valley Union, Gen Elem Dehesa, Gen Elem Encinitas Union, Gen Elem Escondido Union, Gen Elem Jamul-dulzura Union, Gen Elem La Mesa-spring Valley, Gen Elem National, Gen Elem Rancho Santa Fe, Gen Elem San Pasqual Union, Gen Elem Santee, Gen Elem South Bay Union
High School Districts	6	2	33%	High Escondido Union, High Grossmont Union, High San Dieguito Union, High Sweetwater Union
Unified School Districts	15	6	40%	Unif Bond Poway-sfid 2002-1, Prop U 11/5/02, 2019ref, Unif Bond San Marcos Sfid #1-6/04/96, 2004-1 Ref, Unified Bonsall, Unified Mt Empire, Unified Oceanside, Unified Poway, Unified San Diego, Unified Valley Center-pauma, Unified Vista

# County of San Diego IRC

## Draft Map 14 – Supervisorial Districts Summary Statistics

11/13/2021



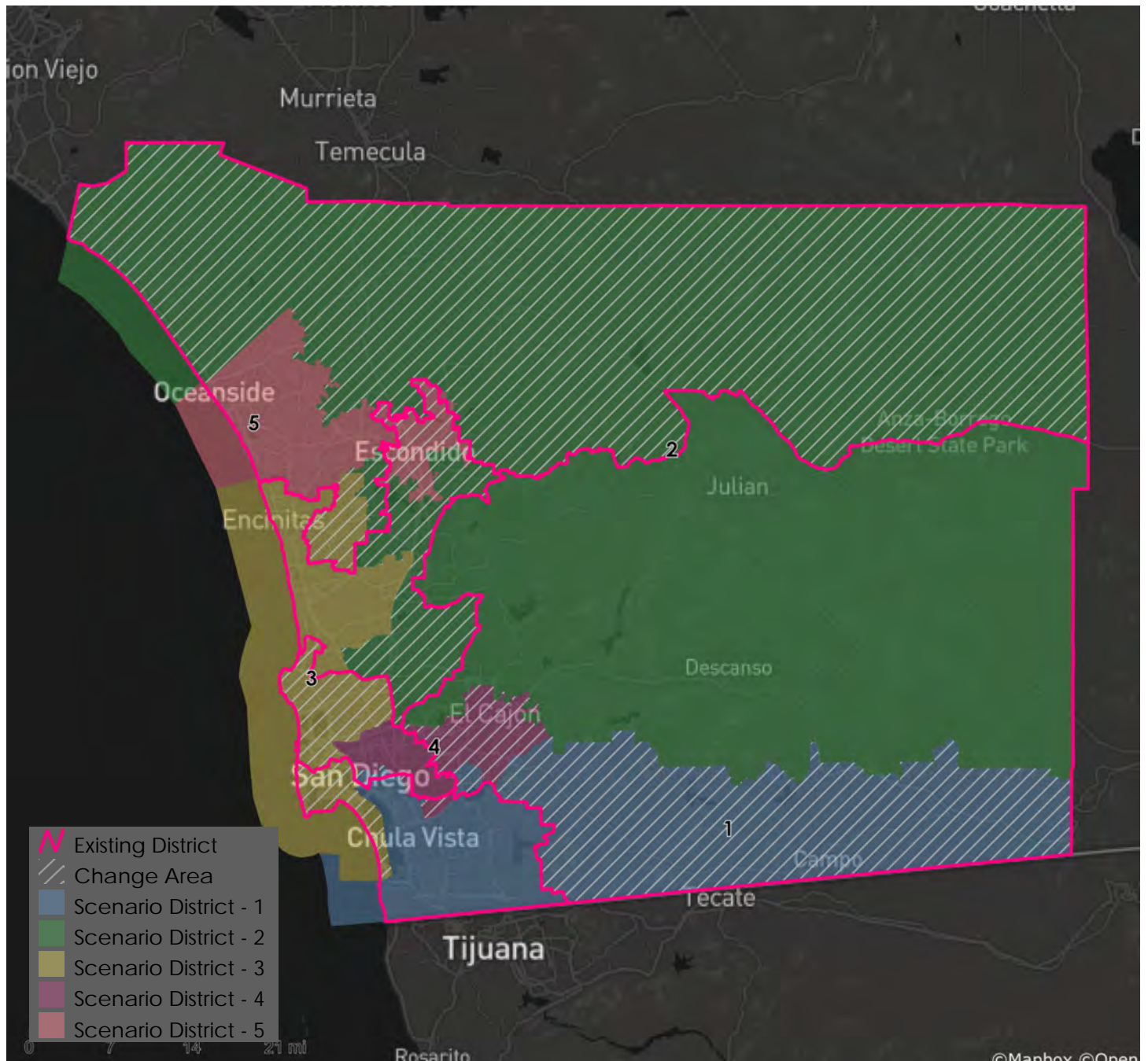
COI Category	Total # of COIs	# of COIs Preserved in Minimum Districts	% of COIs Preserved in Minimum Districts	COIs Not Preserved in Minimum # of Districts
Fire Districts	13	9	69%	Rancho Santa Fe Fire Protection Dist. Of Sd County, San Marcos Fire Protection District, San Miguel Consol. Fire Protection District, Vista Fire Protection District
Public Utility Districts	2	2	100%	
Sanitation Districts	4	2	50%	Buena Sanitation Maint Dist. L&I, San Diego County Sanitation District L&I
Water Districts	50	32	64%	Helix Water District Land, Leucadia Wastewater District, Olivenhain Municipal Water District, Otay Water District, Padre Dam Muni Water Imp Dist #1 (Eastern Portion), Padre Dam Muni Water Imp Dist B, Padre Dam Municipal Water District, Questhaven Municipal Water District, Rainbow Municipal Water District, Rincon Del Diablo Muni Id.E (Formerly F&G), Rincon Del Diablo Muni Water Imp Dist A, Rincon Del Diablo Municipal Water District, San Dieguito Water District Land, South Bay Irrigation Land, Vallecitos Water District, Vallecitos Water Imp Dist No 6 - Sewer Service, Valley Center Municipal Water District, Vista Irrigation Land

\*Many Community Builder submissions represent multiple COIs or proposed supervisorial districts; therefore, fewer can be reasonably maintained within a single district than other categories (e.g., Census Designated Places).

# County of San Diego IRC

## Draft Map 14 – Supervisorial Districts Summary Statistics

11/13/2021



### Metadata

Run Date/Time:	2021-11-17 14:03:17
Workflow Directory:	X:\F2089_San_Diego_County\Projects\Alteryx\
Feature Class:	File: gdb:X:\F2089_San_Diego_County\Data\Redist.gdb\Blocks_2020_02
Scenario:	Districts_DraftMap_14