

COUNTY OF SAN DIEGO SUPERVISORIAL DISTRICTS PUBLIC SUBMITTED MAP 12

COUNTY OF SAN DIEGO
INDEPENDENT
REDISTRICTING
COMMISSION

Legend

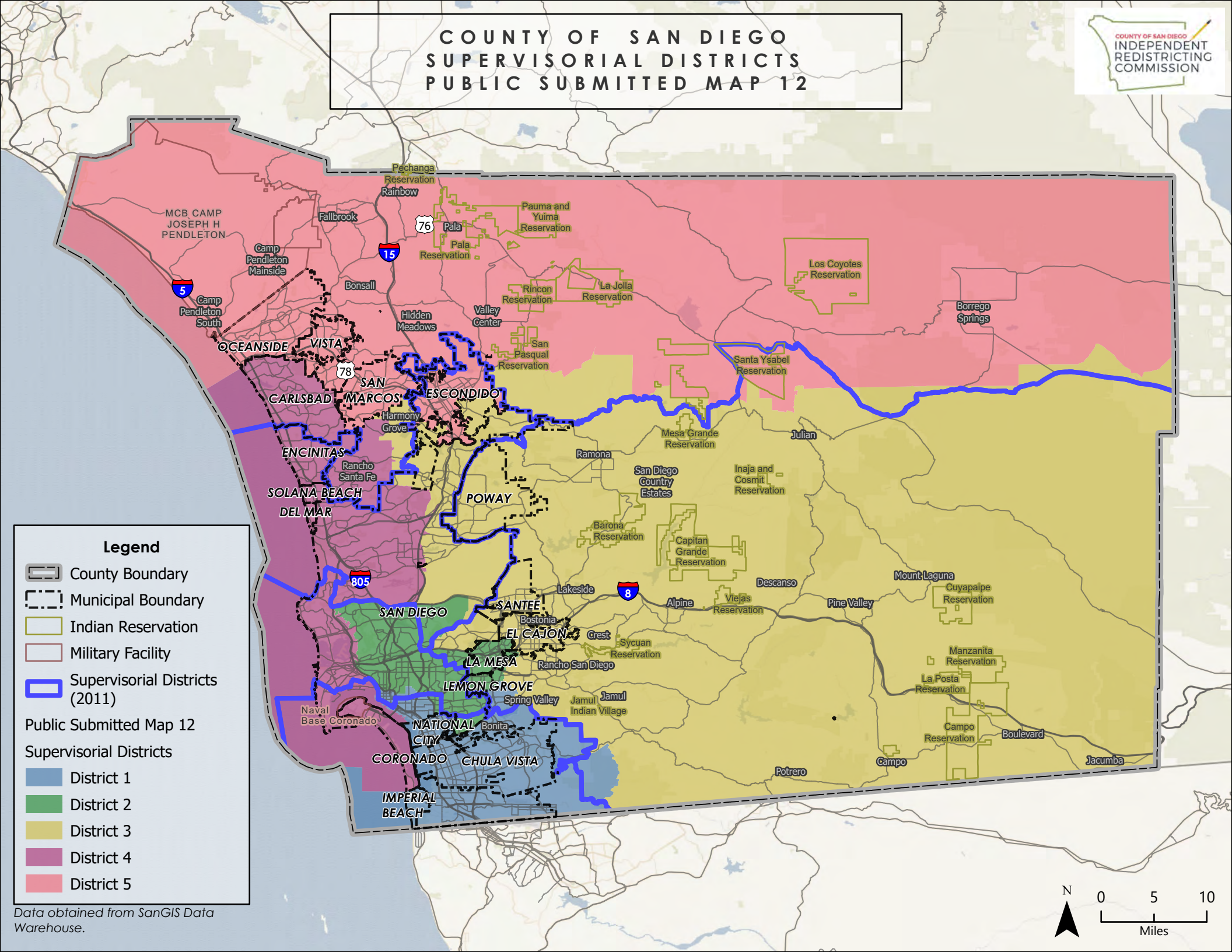
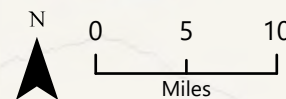
- County Boundary
- Municipal Boundary
- Indian Reservation
- Military Facility
- Supervisory Districts (2011)

Public Submitted Map 12

Supervisory Districts

- District 1
- District 2
- District 3
- District 4
- District 5

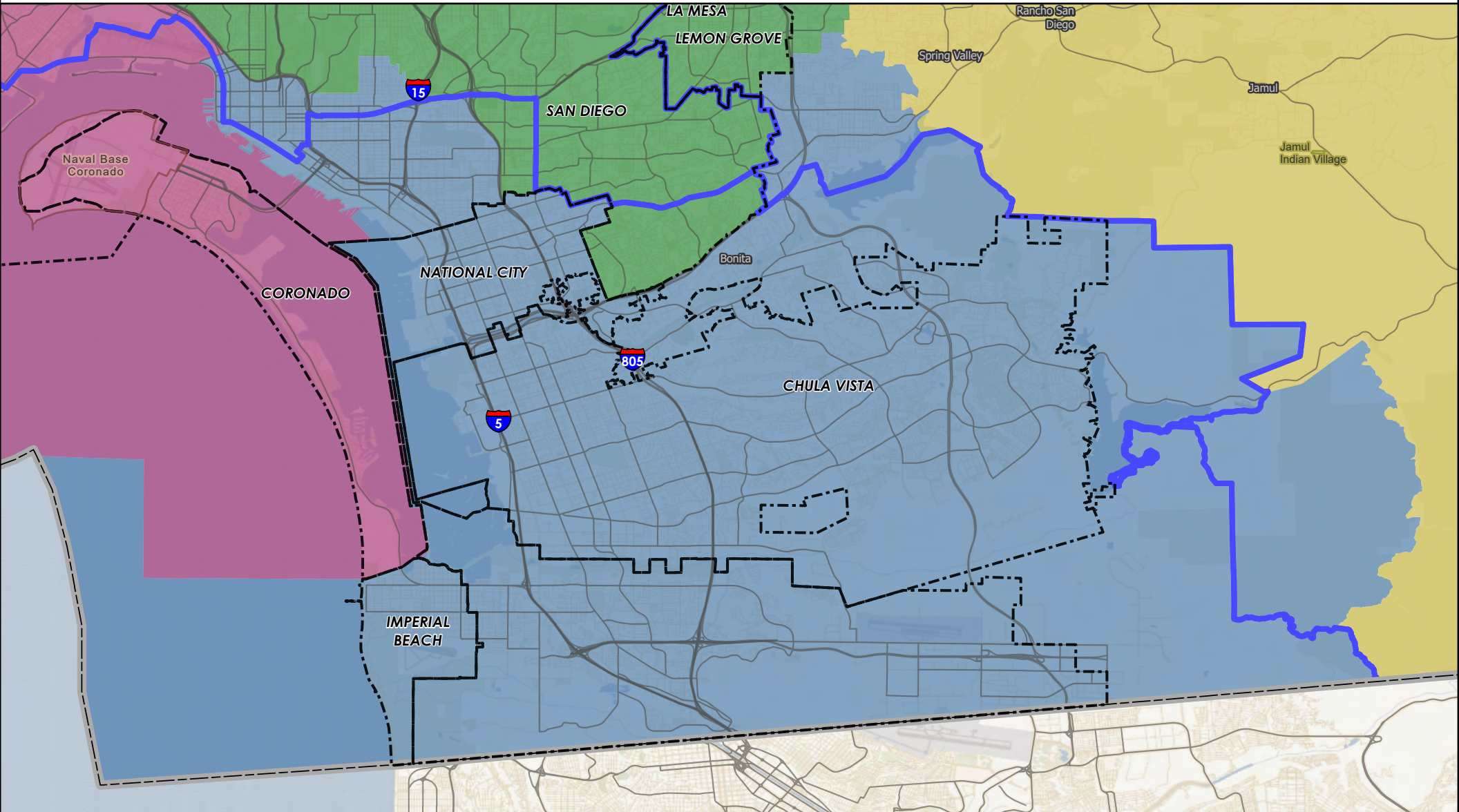
Data obtained from SanGIS Data Warehouse.



COUNTY OF SAN DIEGO

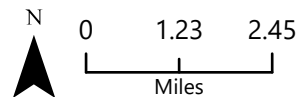
SUPERVISORIAL DISTRICTS - PUBLIC SUBMITTED MAP 12

DISTRICT 1



- County Boundary
- Municipal Boundary
- Indian Reservation
- Military Facility
- Supervisorial Districts (2011)

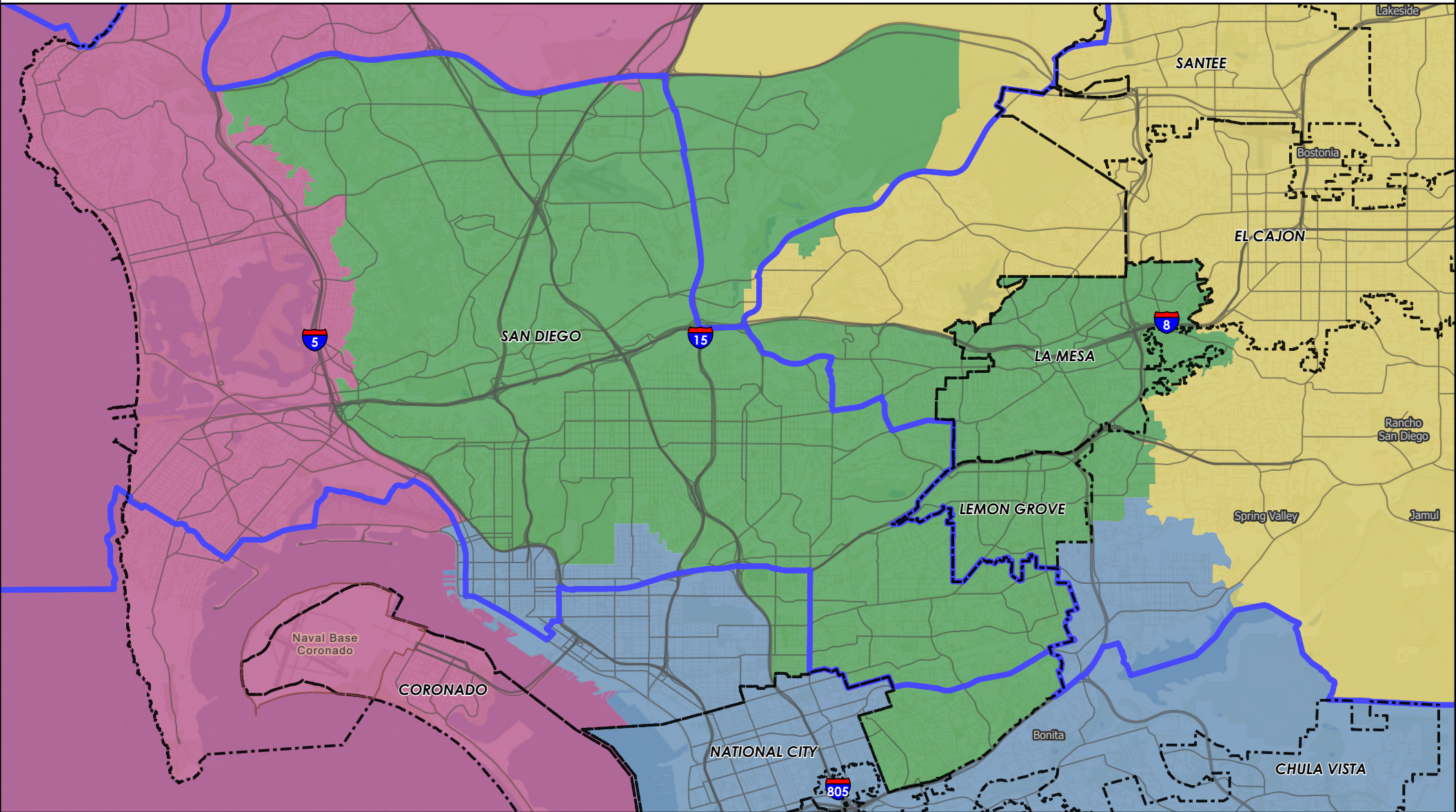
- Public Submitted Map 12
- Supervisorial Districts
- District 1
 - District 2
 - District 3
 - District 4
 - District 5



COUNTY OF SAN DIEGO

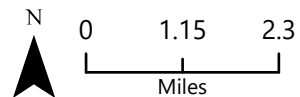
SUPERVISORIAL DISTRICTS - PUBLIC SUBMITTED MAP 12

DISTRICT 2



- County Boundary
- Municipal Boundary
- Indian Reservation
- Military Facility
- Supervisorial Districts (2011)

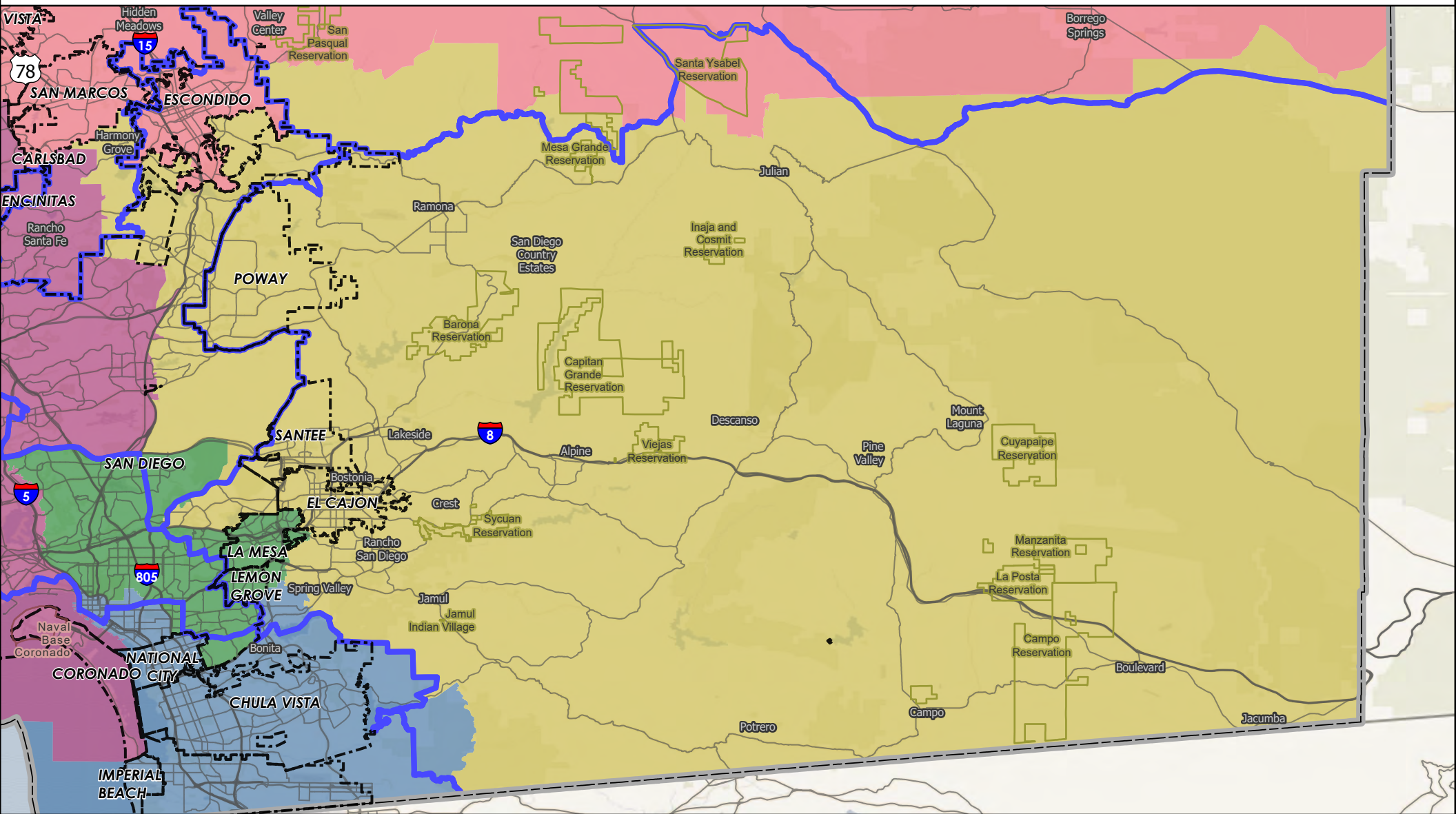
- Public Submitted Map 12
- Supervisorial Districts
- District 1
 - District 2
 - District 3
 - District 4
 - District 5



COUNTY OF SAN DIEGO

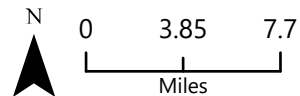
SUPERVISORIAL DISTRICTS - PUBLIC SUBMITTED MAP 12

DISTRICT 3



- County Boundary
- Municipal Boundary
- Indian Reservation
- Military Facility
- Supervisorial Districts (2011)

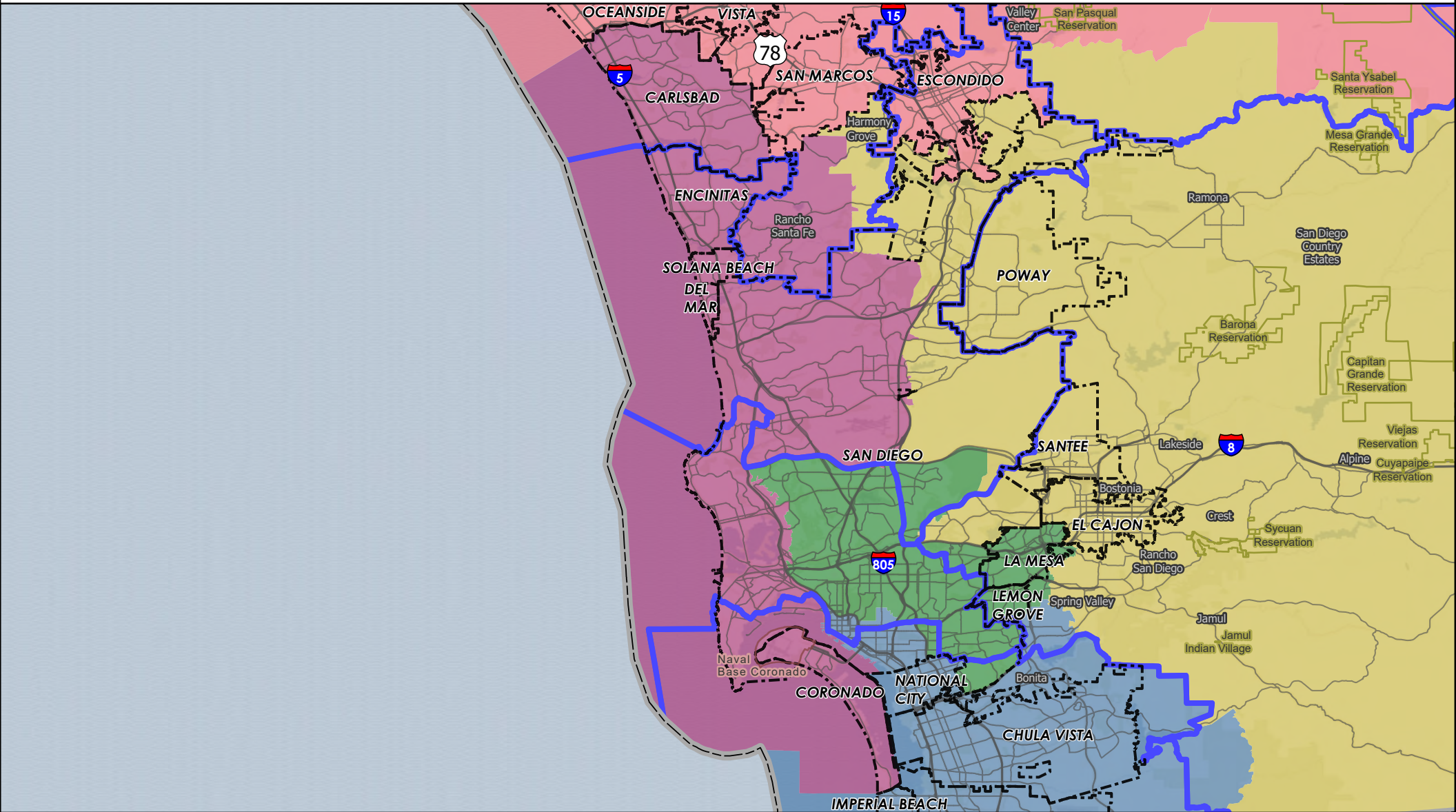
- Public Submitted Map 12
Supervisorial Districts
- District 1
 - District 2
 - District 3
 - District 4
 - District 5



COUNTY OF SAN DIEGO

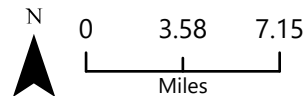
SUPERVISORIAL DISTRICTS - PUBLIC SUBMITTED MAP 12

DISTRICT 4



- County Boundary
- Municipal Boundary
- Indian Reservation
- Military Facility
- Supervisorial Districts (2011)

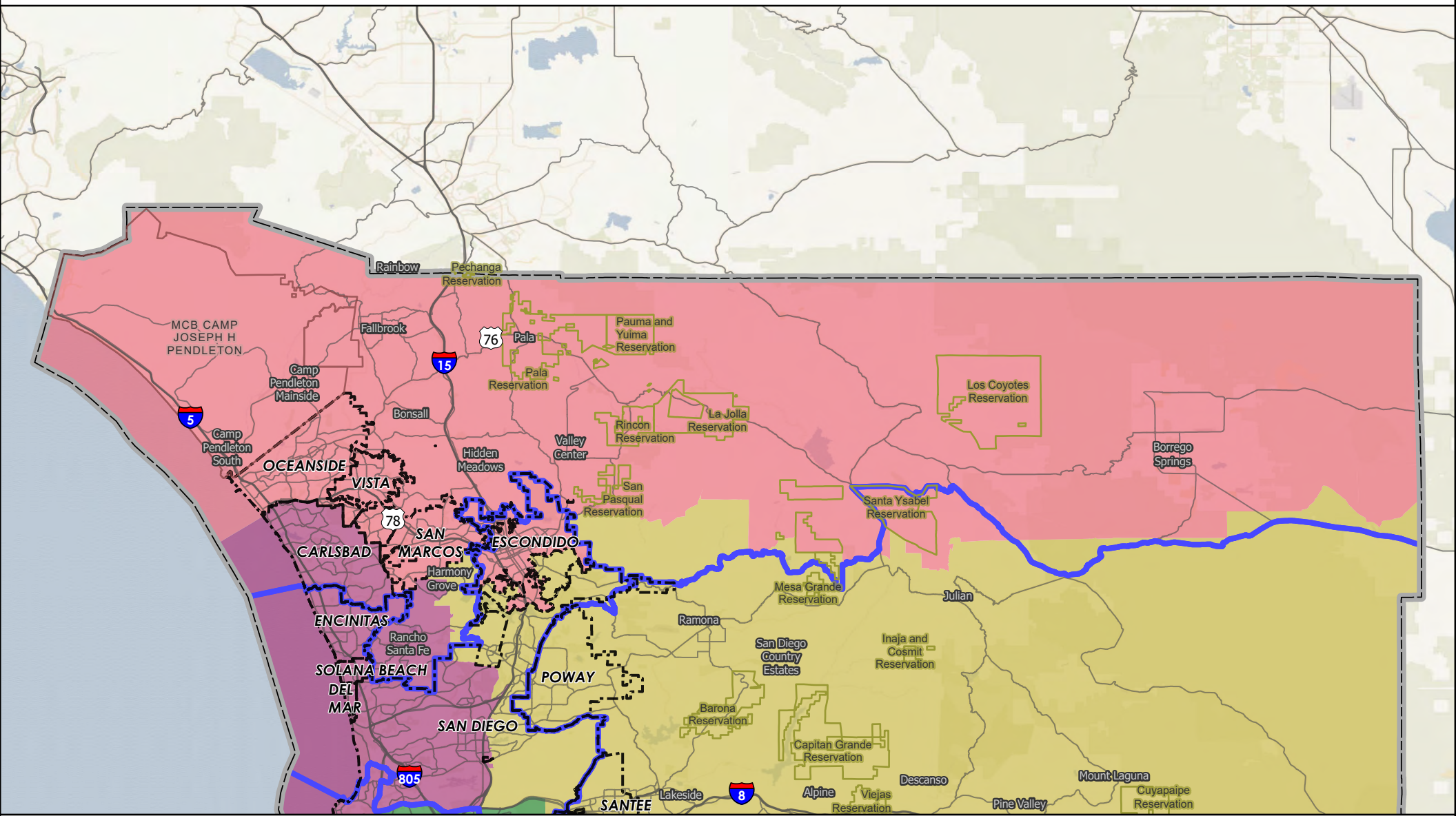
- Public Submitted Map 12
Supervisorial Districts
- District 1
 - District 2
 - District 3
 - District 4
 - District 5



COUNTY OF SAN DIEGO

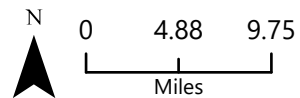
SUPERVISORIAL DISTRICTS - PUBLIC SUBMITTED MAP 12

DISTRICT 5



- County Boundary
- Municipal Boundary
- Indian Reservation
- Military Facility
- Supervisorial Districts (2011)

- Public Submitted Map 12
Supervisorial Districts
- District 1
 - District 2
 - District 3
 - District 4
 - District 5



Data obtained from SanGIS Data Warehouse.

County of San Diego IRC

Public Submitted Map 12 --Supervisory Districts Summary Statistics

11/19/2021



Equal Population Criterion

Ideal Population		660,452
Overall Deviation		6.2%
< 5.0%	5.0 - 10.0%	> 10.0%

California Statewide Database Adjusted
(incarcerated persons reallocation) 2020
Census P.L. 94-171 Redistricting Data
Summary Files - Total Population.

Total Population & Deviation per District

District ID	Total Population	Over / Under Ideal	Deviation From Ideal
1	647,560	-12,892	-2.0%
2	664,337	3,885	0.6%
3	649,529	-10,923	-1.7%
4	652,588	-7,864	-1.2%
5	688,248	27,796	4.2%

Total Population by Race/Ethnicity per District

District ID	White	Black or African American	American Indian or Alaska Native	Asian	Native Hawaiian and Pacific Islander	Some Other Race	Two or More Races	Hispanic/Latino
1	18.0%	5.3%	0.2%	11.6%	0.4%	0.5%	3.5%	60.6%
2	37.4%	8.9%	0.3%	13.9%	0.5%	0.6%	5.3%	33.1%
3	57.8%	3.3%	0.5%	10.3%	0.3%	0.6%	6.0%	21.1%
4	58.9%	1.9%	0.2%	18.5%	0.2%	0.6%	6.0%	13.7%
5	43.2%	2.8%	0.7%	6.7%	0.6%	0.5%	4.6%	41.0%

California Statewide Database (CA SWDB) Adjusted 2020 Census P.L. 94-171 Redistricting Data - Total Population by Race and Hispanic/Latino origin.

VAP by Race/Ethnicity per District

District	White	Black or African American	American Indian or Alaska Native	Asian	Native Hawaiian and Pacific Islander	Some Other Race	Two or More Races	Hispanic/Latino
1	20.7%	5.6%	0.3%	12.4%	0.4%	0.4%	3.0%	57.3%
2	40.8%	8.6%	0.3%	14.7%	0.5%	0.6%	4.5%	29.9%
3	61.3%	3.3%	0.5%	10.3%	0.3%	0.5%	4.8%	18.9%
4	61.1%	2.0%	0.2%	18.7%	0.2%	0.6%	4.6%	12.6%
5	47.3%	3.0%	0.7%	7.2%	0.6%	0.5%	3.9%	36.8%

CA SWDB Adjusted 2020 Census P.L. 94-171 Redistricting Data - Voting-age Population (VAP) by Race and Hispanic/Latino origin.

CVAP by Race/Ethnicity per District

District ID	White	Black or African American	American Indian or Alaska Native	Asian	Native Hawaiian and Pacific Islander	Two or More Races	Hispanic/Latino
1	25.8%	6.8%	0.2%	12.7%	0.6%	2.1%	51.7%
2	47.7%	10.3%	0.2%	13.1%	0.4%	3.0%	25.0%
3	69.0%	3.4%	0.5%	7.9%	0.3%	3.0%	15.7%
4	69.0%	2.2%	0.3%	13.9%	0.3%	2.8%	11.3%
5	56.4%	3.7%	0.9%	6.2%	0.4%	2.6%	29.6%

CA SWDB Adjusted 2015-2019 American Community Survey Citizen Voting-age Population (CVAP) by Race and Ethnicity Special Tabulation. Rounding may lead to summation of percentages not equal to 100% (+/- 1%).

Contiguity Criterion

Are all districts contiguous at more than a point or by bridge or by regular ferry service? **No**

Compactness Criterion

Where it does not conflict with other mandatory criteria, districts are compact such that nearby areas of population are not bypassed for more distant areas of population: **Yes**

Criteria Specific to the County of San Diego

At least three districts shall include unincorporated territory.

Number of districts that include unincorporated territory: **5**

Districts that include unincorporated territory:

District 1, District 2, District 3, District 4, District 5

Two districts must be comprised of primarily unincorporated territory.

Number of districts that are primarily unincorporated territory: **2**

Districts that are primarily unincorporated territory:

District 3, District 5

Land Area Table

District	District Area (sq mi)	Unincorporated Area (sq mi)	Percent Unincorporated Area	Incorporated Area (sq mi)	Percent Incorporated Area
District 1	164	57	34.7%	107	65.3%
District 2	96	2	2.2%	94	97.8%
District 3	2,108	1,948	92.4%	160	7.6%
District 4	236	30	12.6%	207	87.4%
District 5	1,655	1,531	92.5%	124	7.5%

Preservation of Geographic Integrity Criteria (i.e., minimize division of cities, communities of interest, etc.)

COI Category	Total # of COIs	# of COIs Preserved in Minimum Districts	% of COIs Preserved in Minimum Districts	COIs Not Preserved in Minimum # of Districts
*Community Builder spatial-submitted COIs	27	11	41%	78 Cooridor, AAPI communities, BIPOC Immigrant & Refugee Communities, BIPOC Immigrant and Refugee, BIPOC, Immigrant & Refugee, Carlsbad and North County neighbors, Grossmont-Mt. Helix, I live in North Encanto but a lot of our resources as in La Mesa, Lemon Grove, or in the city., Inland North County, Lakeside and unincorporated areas within the existing District 2, Magic Back Country, North Coastal: includes the cities of Carlsbad, Encinitas, Solano Beach, and Del Mar along with the unincorporated communities of Fairbank Ranch and Rancho Santa Fe., North County San Diego Asian Diaspora, South Bay, University City/La Jolla, Valley Center
Municipalities	18	17	94%	San Diego
Census Designated Places	39	37	95%	Casa De Oro-mount Helix Cdp, Spring Valley Cdp
Indian Reservations	19	19	100%	
Military Installations	22	21	95%	Mcas Miramar
Community Plan Areas (City of San Diego)	57	44	77%	Black Mountain Ranch, Clairemont Mesa, Kearny Mesa, Linda Vista, Military Facilities, Miramar Ranch North, Mission Valley, Navajo, Rancho Penasquitos, Reserve, Scripps Miramar Ranch, Tierrasanta, University
Community Plan Areas - Representative Planning and Sponsor Groups (Non-City of San Diego)	36	24	67%	County Islands, Desert, Jamul, Julian, North County Metro, North Mountain, Otay, Pala - Pauma, Ramona, San Dieguito, Spring Valley, Valle De Oro
Elementary School Districts	24	12	50%	Gen Bond Solana Beach-sfid2016-1a Meas Jj 11/08/16, Gen Elem Cajon Valley Union, Gen Elem Chula Vista, Gen Elem Encinitas Union, Gen Elem Escondido Union, Gen Elem Julian Union, Gen Elem La Mesa-spring Valley, Gen Elem National, Gen Elem Rancho Santa Fe, Gen Elem San Pasqual Union, Gen Elem South Bay Union, Gen Elem Spencer Valley
High School Districts	6	1	17%	High Escondido Union, High Grossmont Union, High Julian Union, High San Dieguito Union, High Sweetwater Union

County of San Diego IRC

Public Submitted Map 12 --Supervisory Districts Summary Statistics

11/19/2021



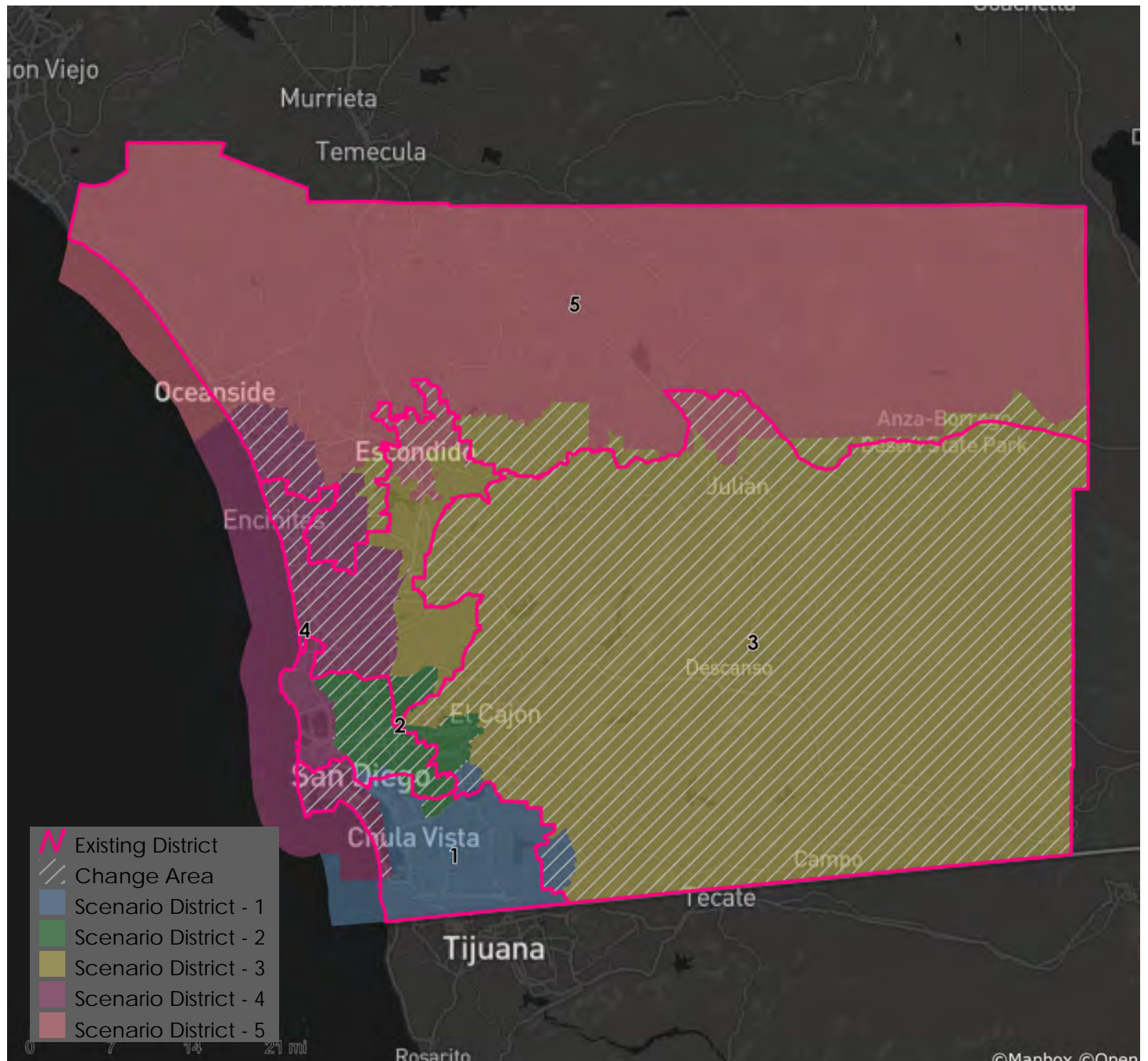
COI Category	Total # of COIs	# of COIs Preserved in Minimum Districts	% of COIs Preserved in Minimum Districts	COIs Not Preserved in Minimum # of Districts
Unified School Districts	15	4	27%	Unif Bond Poway-sfid 2002-1, Prop U 11/5/02, 2019ref, Unif Bond San Marcos Sfid #1-6/04/96, 2004-1 Ref, Unified Borrego Springs, Unified Carlsbad, Unified Oceanside, Unified Poway, Unified Ramona, Unified San Diego, Unified Valley Center-pauma, Unified Vista, Unified Warner
Fire Districts	13	9	69%	Rancho Santa Fe Fire Protection Dist. Of Sd County, San Marcos Fire Protection District, San Miguel Consol. Fire Protection District, Valley Center Fire Protection District
Public Utility Districts	2	2	100%	
Sanitation Districts	4	3	75%	San Diego County Sanitation District L&I
Water Districts	50	39	78%	Helix Water District Land, Olivenhain Municipal Water District, Otay Water District, Questhaven Municipal Water District, Rincon Del Diablo Muni Id.E (Formerly F&G), Rincon Del Diablo Muni Water Imp Dist A, Rincon Del Diablo Municipal Water District, South Bay Irrigation Land, Vallecitos Water District, Vallecitos Water Imp Dist No 6 - Sewer Service, Valley Center Municipal Water District

*Many Community Builder spatial depictions (polygons) of COIs are general, represent multiple COIs, or represent a single proposed supervisory district; therefore not all polygons can be maintained undivided, even when the intent of the COI is respected. The category, COIs Not Preserved in Minimum # of Districts includes any polygon divided even minimally by a district boundary; the name of the COI (last column) is that provided by the submitter.

County of San Diego IRC

Public Submitted Map 12 --Supervisory Districts Summary Statistics

11/19/2021



Metadata

Run Date/Time:	2021-11-24 11:06:12
Workflow Directory:	X:\F2089_San_Diego_County\Projects\Alteryx\
Feature Class:	File: gdb:X:\F2089_San_Diego_County\Data\Redist.gdb\Blocks_2020_02
Scenario:	Districts_PubSub_12