

## County of San Diego IRC Approved Mapping Motion 11/19/21

ON MOTION of Commissioner Caterina, seconded by Commissioner Inman, the Commission approved to move forward with Draft Maps 13a and 14 with the following specific tasks to FLO Analytics:

### **For Map 13a:**

1. **Move Elfin Forest and Harmony Grove in the same district**
2. See about trading communities from coastal district into District 3 with the intent to expand into Mira Mesa, Rancho Peñasquitos, and Carmel Valley areas (e.g., Move Rancho Santa Fe into District 3 along with Solana Beach and areas east of I-5 in order to include Mira Mesa in District 4)
3. Move Rancho San Diego, Spring Valley, and unincorporated areas on the municipal boundaries of El Cajon from District 2 to District 3, and Bonita from District 1 to District 3
4. Look for ways to protect BIPOC and LGBTQ communities as population is added to District 2, referencing San Diego City Council District 3 map, with a goal of expanding District 2 into District 4 using communities immediately north of the I-8
5. Try to add unincorporated section of Escondido into District 5 from District 3
6. Move Coronado into District 1

***Draft Map 13 versions 1-6 (e.g., 13a v.1) reflect individual or grouped motion tasks.***

*Please note the district numbers in this map do not correspond to the numbers of existing supervisory districts. District numbers from prior IRC draft maps have been adjusted to more closely align with population density of existing district boundaries to the extent possible.*

# COUNTY OF SAN DIEGO SUPERVISORIAL DISTRICTS DRAFT MAP 13A V.1 - 11/19/2021 MEETING



### Legend

- County Boundary
- Municipal Boundary
- Indian Reservation
- Military Facility
- Supervisory Districts (2011)
- Broadway Pier Ferry Landing

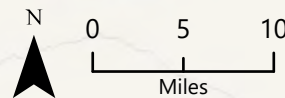
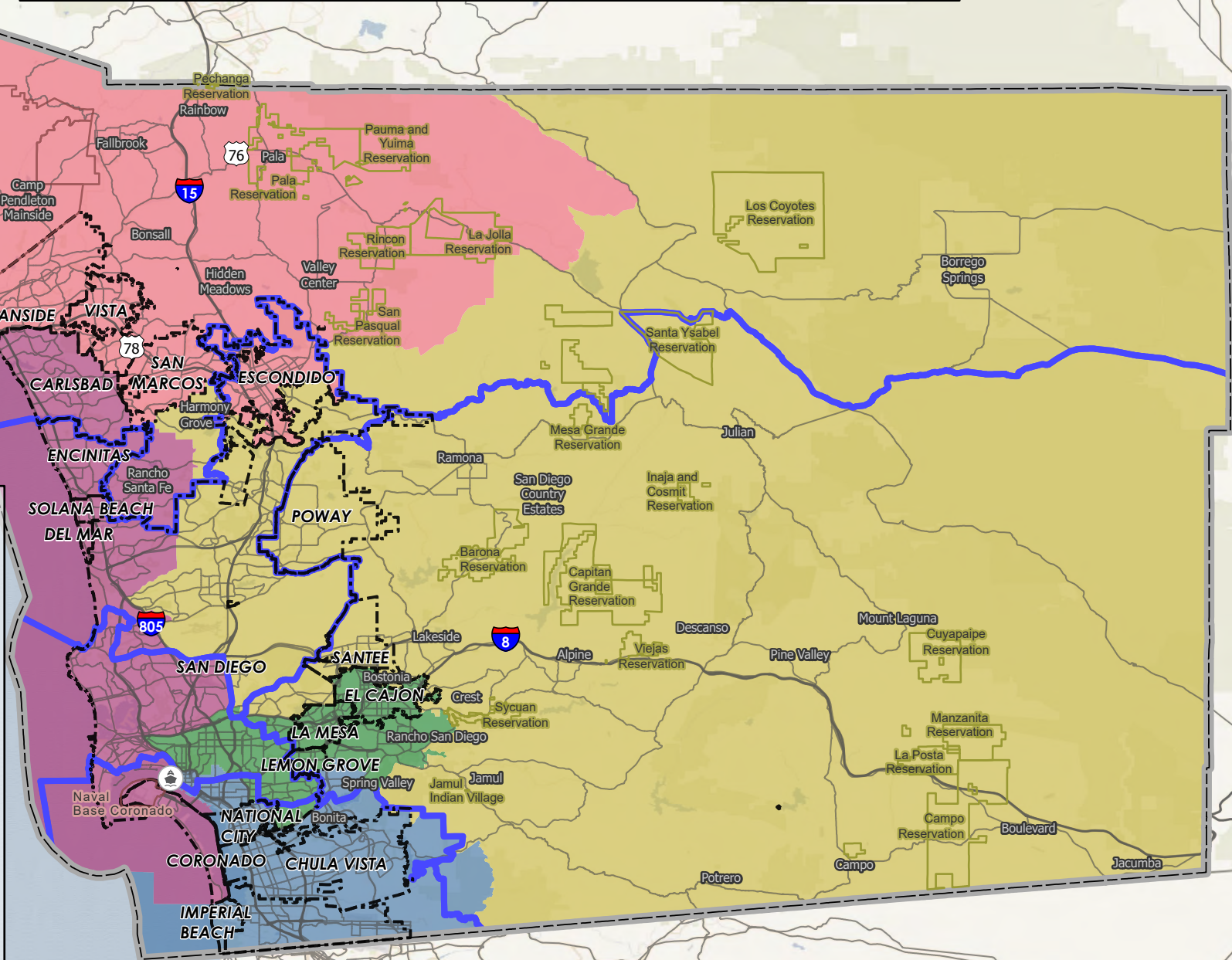
Draft Map 13a v.1

Supervisory Districts

- District 1
- District 2
- District 3
- District 4
- District 5

Major Roads

Data obtained from SanGIS Data Warehouse.

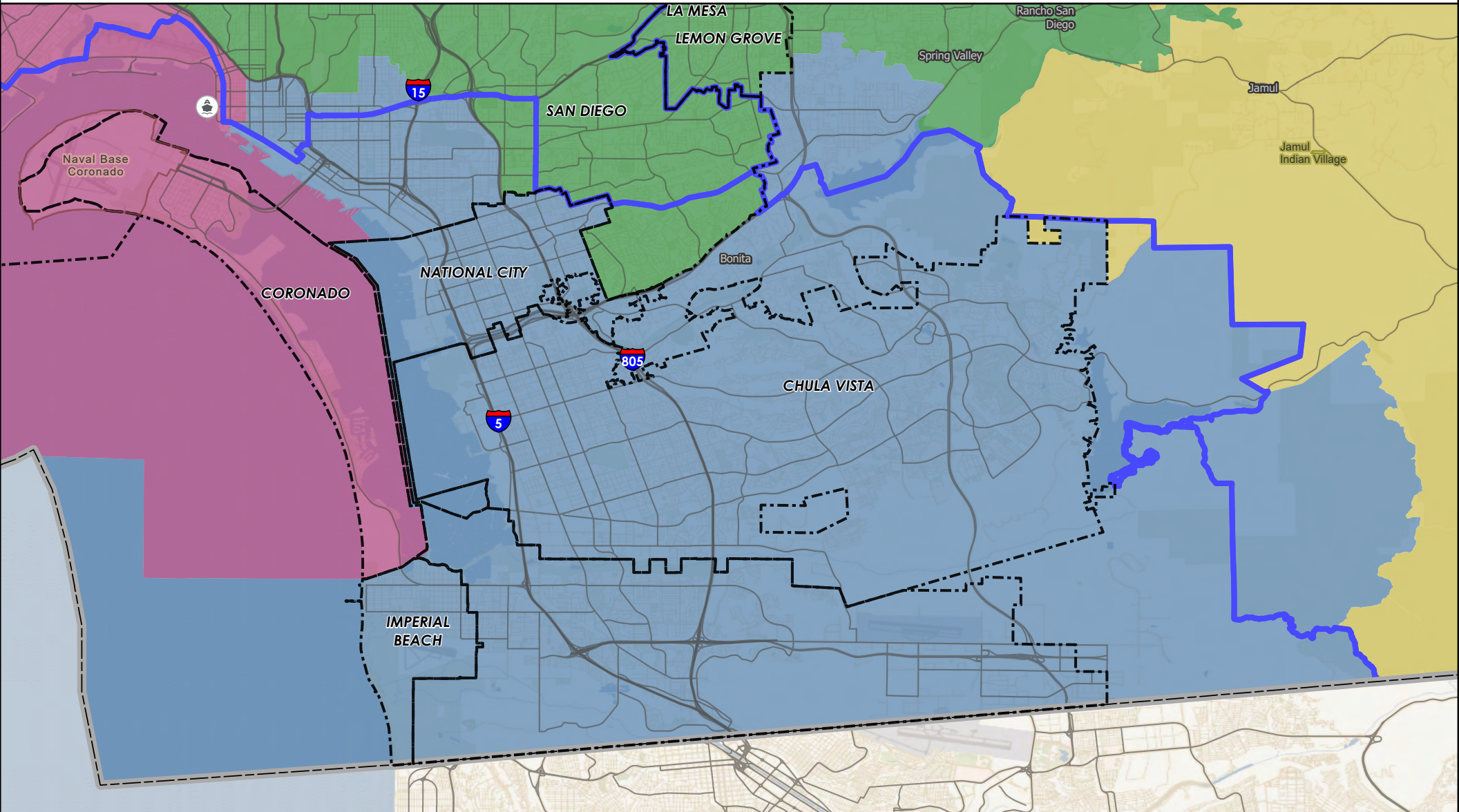




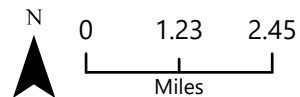
# COUNTY OF SAN DIEGO

## SUPERVISORIAL DISTRICTS - DRAFT MAP 13A V.1

### 11/19/2021 MEETING - DISTRICT 1



- |                                |                         |
|--------------------------------|-------------------------|
| County Boundary                | Draft Map 13a v.1       |
| Municipal Boundary             | Supervisorial Districts |
| Indian Reservation             | District 1              |
| Military Facility              | District 2              |
| Broadway Pier Ferry Landing    | District 3              |
| Supervisorial Districts (2011) | District 4              |
|                                | District 5              |

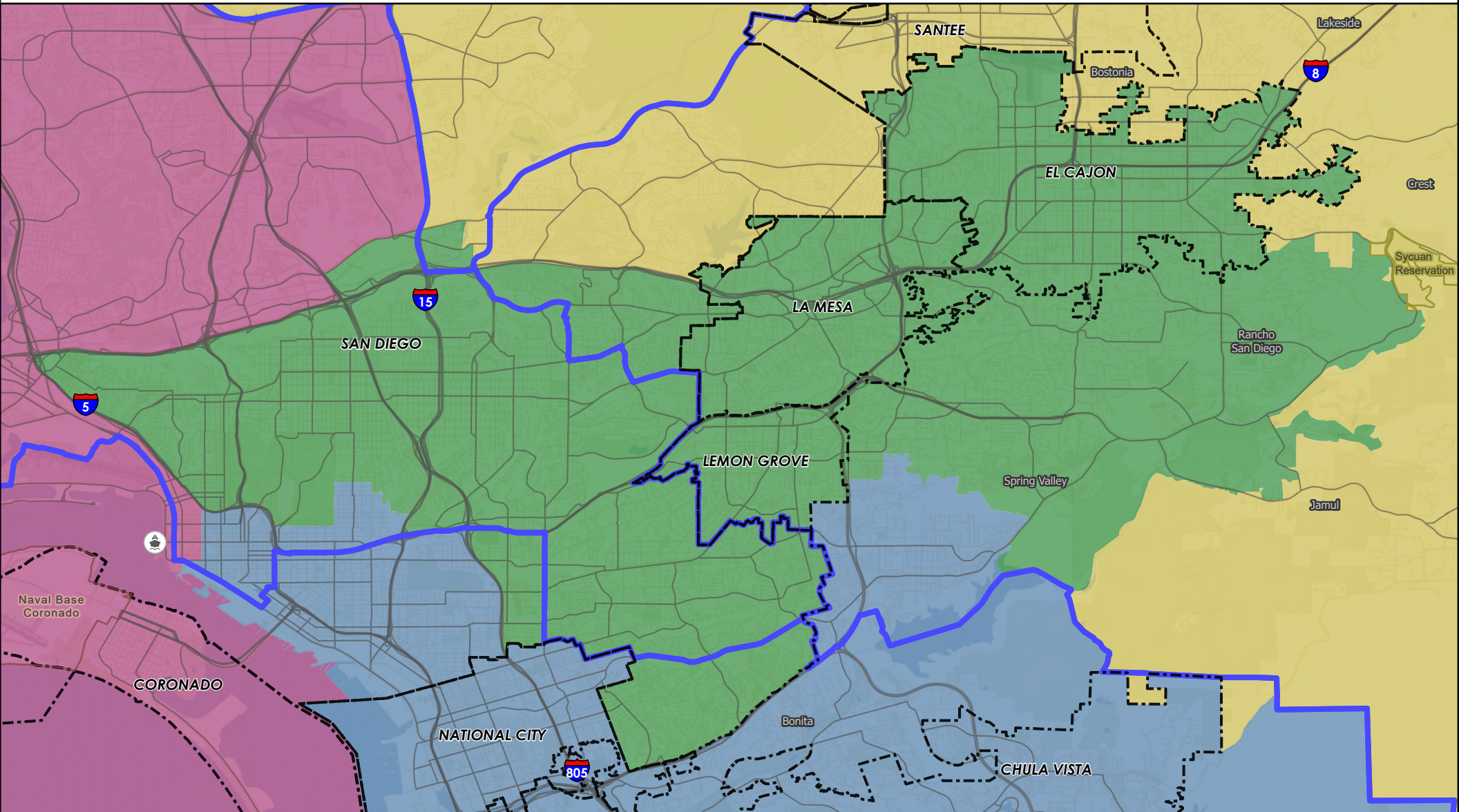




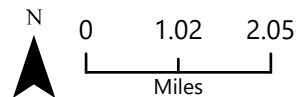
# COUNTY OF SAN DIEGO

## SUPERVISORIAL DISTRICTS - DRAFT MAP 13A V.1

### 11/19/2021 MEETING - DISTRICT 2



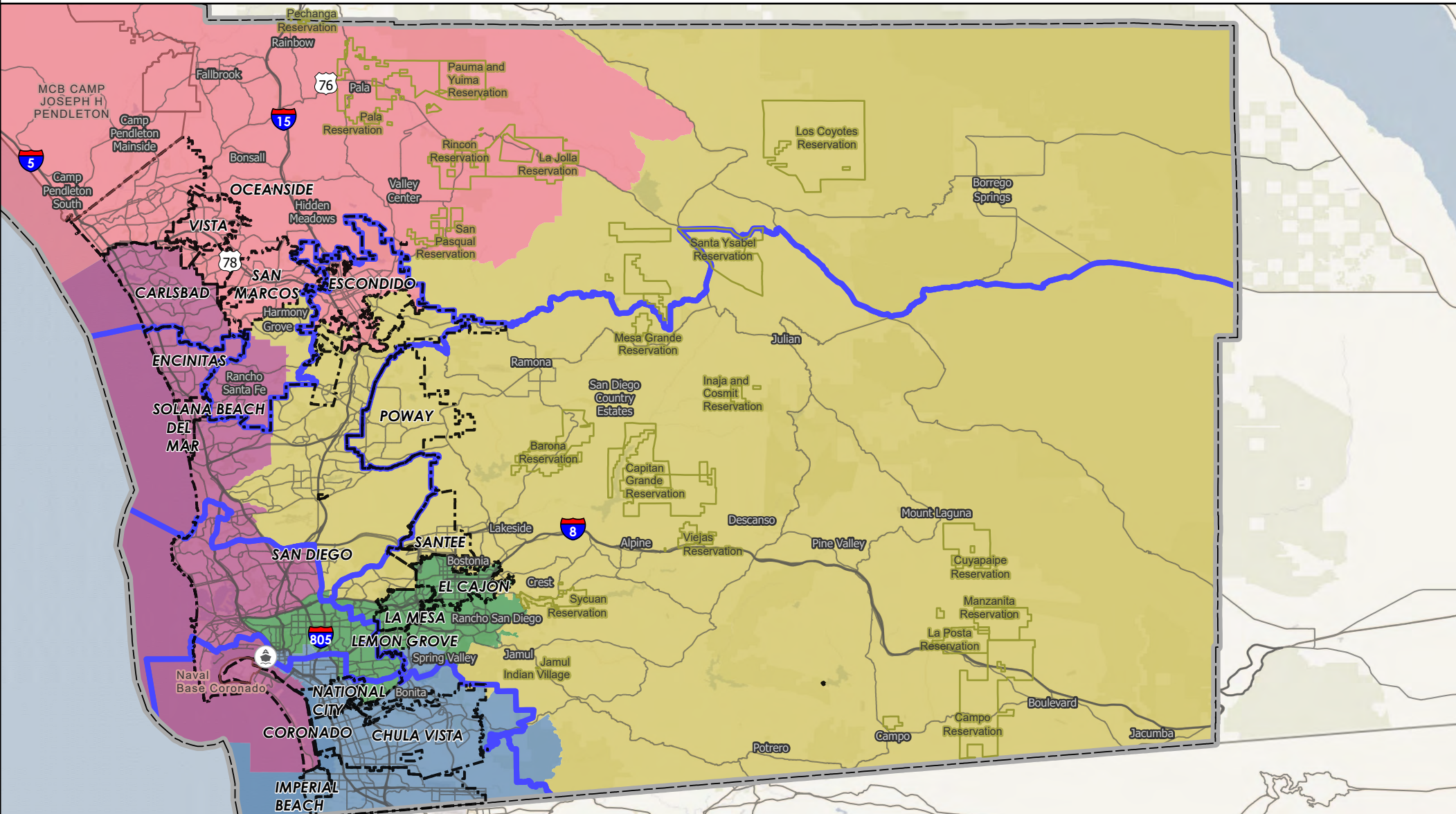
- |                                |                         |
|--------------------------------|-------------------------|
| County Boundary                | Draft Map 13a v.1       |
| Municipal Boundary             | Supervisorial Districts |
| Indian Reservation             | District 1              |
| Military Facility              | District 2              |
| Broadway Pier Ferry Landing    | District 3              |
| Supervisorial Districts (2011) | District 4              |
|                                | District 5              |



# COUNTY OF SAN DIEGO

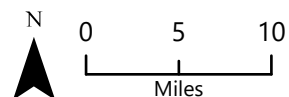
## SUPERVISORIAL DISTRICTS - DRAFT MAP 13A V.1

### 11/19/2021 MEETING - DISTRICT 3



- County Boundary
- Municipal Boundary
- Indian Reservation
- Military Facility
- Broadway Pier Ferry Landing
- Supervisorial Districts (2011)

- Draft Map 13a v.1  
Supervisorial Districts
- District 1
  - District 2
  - District 3
  - District 4
  - District 5

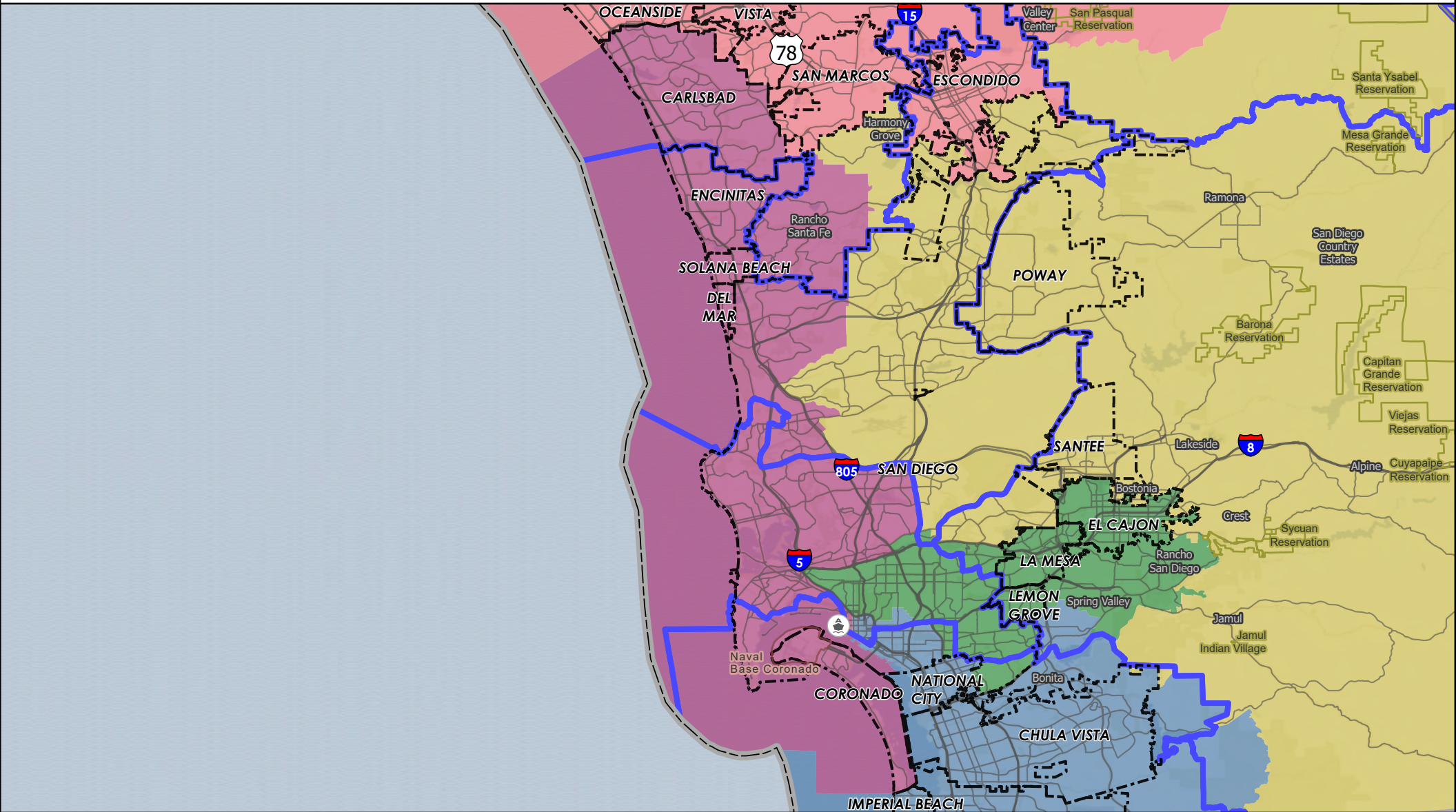




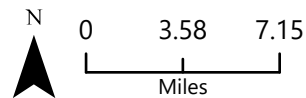
# COUNTY OF SAN DIEGO

## SUPERVISORIAL DISTRICTS - DRAFT MAP 13A V.1

### 11/19/2021 MEETING - DISTRICT 4



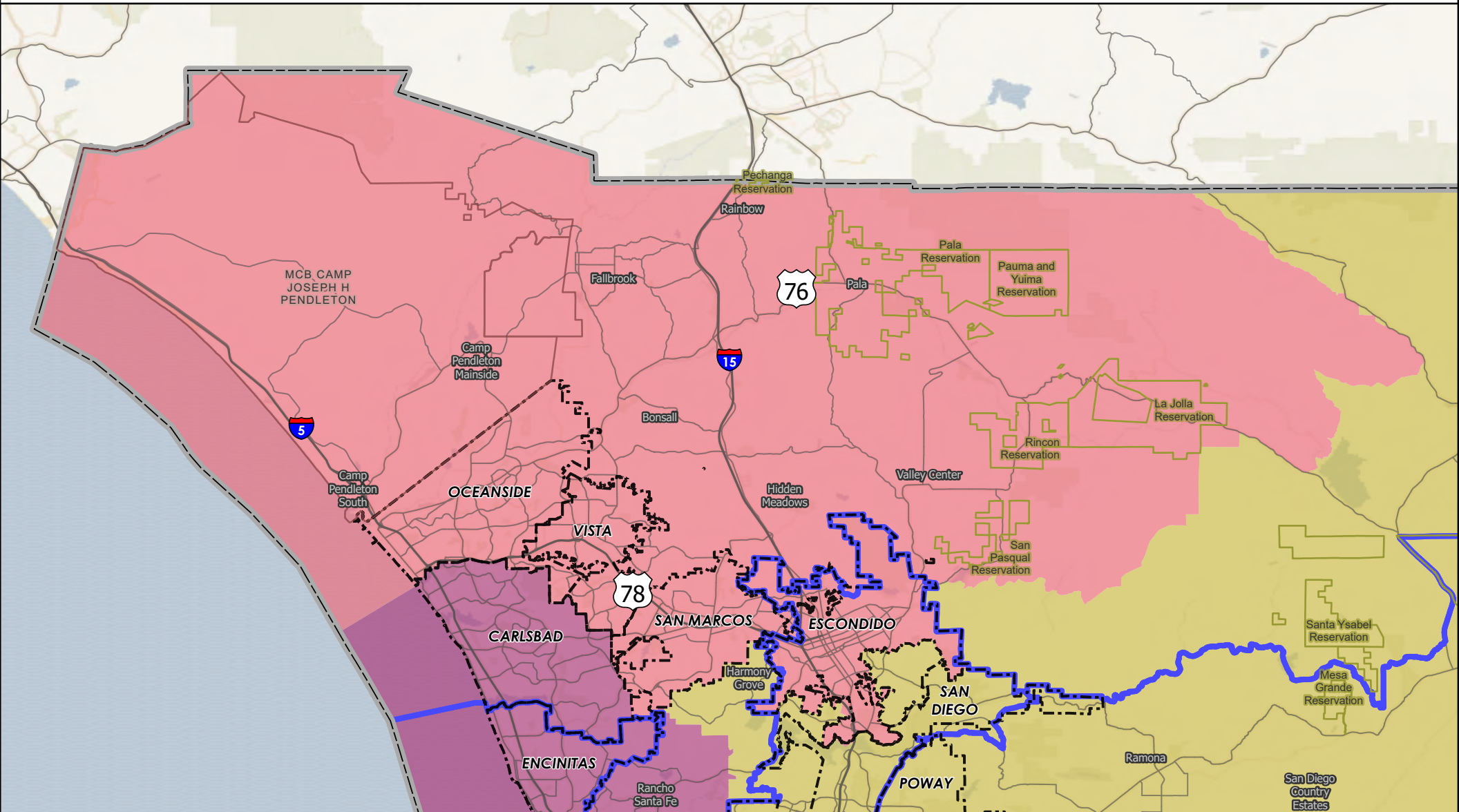
- |                                |                         |
|--------------------------------|-------------------------|
| County Boundary                | Draft Map 13a v.1       |
| Municipal Boundary             | Supervisorial Districts |
| Indian Reservation             | District 1              |
| Military Facility              | District 2              |
| Broadway Pier Ferry Landing    | District 3              |
| Supervisorial Districts (2011) | District 4              |
|                                | District 5              |



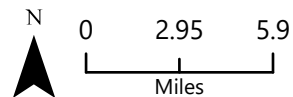
# COUNTY OF SAN DIEGO

## SUPERVISORIAL DISTRICTS - DRAFT MAP 13A V.1

### 11/19/2021 MEETING - DISTRICT 5



- |                                |                         |
|--------------------------------|-------------------------|
| County Boundary                | Draft Map 13a v.1       |
| Municipal Boundary             | Supervisorial Districts |
| Indian Reservation             | District 1              |
| Military Facility              | District 2              |
| Broadway Pier Ferry Landing    | District 3              |
| Supervisorial Districts (2011) | District 4              |
|                                | District 5              |





### Equal Population Criterion

Ideal Population		660,452
Overall Deviation		6.8%
< 5.0%	5.0 - 10.0%	> 10.0%

California Statewide Database Adjusted  
(incarcerated persons reallocation) 2020  
Census P.L. 94-171 Redistricting Data  
Summary Files - Total Population.

### Total Population & Deviation per District

District ID	Total Population	Over / Under Ideal	Deviation From Ideal
1	638,168	-22,284	-3.4%
2	644,253	-16,199	-2.5%
3	659,100	-1,352	-0.2%
4	677,839	17,387	2.6%
5	682,902	22,450	3.4%

### Total Population by Race/Ethnicity per District

District ID	White	Black or African American	American Indian or Alaska Native	Asian	Native Hawaiian and Pacific Islander	Some Other Race	Two or More Races	Hispanic/Latino
1	17.2%	5.3%	0.2%	11.6%	0.4%	0.5%	3.5%	61.3%
2	38.6%	9.3%	0.3%	11.4%	0.5%	0.6%	5.0%	34.4%
3	53.5%	2.6%	0.6%	18.3%	0.3%	0.6%	6.3%	17.9%
4	61.6%	2.3%	0.2%	12.8%	0.2%	0.7%	6.0%	16.2%
5	43.1%	2.8%	0.7%	6.7%	0.6%	0.5%	4.6%	41.0%

California Statewide Database (CA SWDB) Adjusted 2020 Census P.L. 94-171 Redistricting Data - Total Population by Race and Hispanic/Latino origin.

### VAP by Race/Ethnicity per District

District	White	Black or African American	American Indian or Alaska Native	Asian	Native Hawaiian and Pacific Islander	Some Other Race	Two or More Races	Hispanic/Latino
1	19.7%	5.7%	0.3%	12.5%	0.4%	0.4%	3.0%	58.1%
2	41.9%	9.1%	0.3%	12.0%	0.5%	0.5%	4.3%	31.3%
3	56.5%	2.7%	0.5%	18.7%	0.3%	0.5%	4.8%	15.9%
4	63.8%	2.3%	0.2%	13.2%	0.2%	0.6%	4.8%	14.9%
5	47.2%	3.0%	0.6%	7.3%	0.6%	0.5%	3.9%	36.9%

CA SWDB Adjusted 2020 Census P.L. 94-171 Redistricting Data - Voting-age Population (VAP) by Race and Hispanic/Latino origin.



### CVAP by Race/Ethnicity per District

District ID	White	Black or African American	American Indian or Alaska Native	Asian	Native Hawaiian and Pacific Islander	Two or More Races	Hispanic/Latino
1	24.8%	6.9%	0.2%	12.9%	0.6%	2.1%	52.4%
2	48.2%	11.0%	0.2%	10.7%	0.5%	3.1%	26.1%
3	64.7%	2.8%	0.5%	14.7%	0.4%	3.1%	13.5%
4	71.5%	2.5%	0.3%	9.6%	0.2%	2.6%	13.2%
5	56.2%	3.7%	0.8%	6.2%	0.5%	2.6%	29.8%

CA SWDB Adjusted 2015-2019 American Community Survey Citizen Voting-age Population (CVAP) by Race and Ethnicity Special Tabulation. Rounding may lead to summation of percentages not equal to 100% (+/- 1%).

### Contiguity Criterion

Are all districts contiguous at more than a point or by bridge or by regular ferry service? **Yes**

### Compactness Criterion

Where it does not conflict with other mandatory criteria, districts are compact such that nearby areas of population are not bypassed for more distant areas of population: **Yes**

### Criteria Specific to the County of San Diego

**At least three districts shall include unincorporated territory.**

Number of districts that include unincorporated territory: **5**

Districts that include unincorporated territory:

**District 1, District 2, District 3, District 4, District 5**

**Two districts must be comprised of primarily unincorporated territory.**

Number of districts that are primarily unincorporated territory: **2**

Districts that are primarily unincorporated territory:

**District 3, District 5**

### Land Area Table

District	District Area (sq mi)	Unincorporated Area (sq mi)	Percent Unincorporated Area	Incorporated Area (sq mi)	Percent Incorporated Area
District 1	163	57	34.6%	107	65.4%
District 2	93	24	26.1%	69	73.9%
District 3	2,936	2,730	93.0%	206	7.0%
District 4	213	27	12.4%	187	87.6%
District 5	854	731	85.5%	124	14.5%

### Preservation of Geographic Integrity Criteria (i.e., minimize division of cities, communities of interest, etc.)

COI Category	Total # of COIs	# of COIs Preserved in Minimum Districts	% of COIs Preserved in Minimum Districts	COIs Not Preserved in Minimum # of Districts
*Community Builder spatial-submitted COIs	27	12	44%	78 Cooridor, AAPI communities, BIPOC Immigrant & Refugee Communities, BIPOC Immigrant and Refugee, BIPOC, Immigrant & Refugee, Carlsbad and North County neighbors, I live in North Encanto but a lot of our resources as in La Mesa, Lemon Grove, or in the city., Inland North County, Lakeside and unincorporated areas within the existing District 2, Magic Back Country, North Coastal: includes the cities of Carlsbad, Encinitas, Solano Beach, and Del Mar along with the unincorporated communities of Fairbank Ranch and Rancho Santa Fe., North County San Diego Asian Diaspora, South Bay, University City/La Jolla, Valley Center
Municipalities	18	17	94%	San Diego
Census Designated Places	39	36	92%	Jamul Cdp, Rancho San Diego Cdp, Spring Valley Cdp
Indian Reservations	19	19	100%	
Military Installations	22	21	95%	Mcas Miramar
Community Plan Areas (City of San Diego)	57	51	89%	Del Mar Mesa, Downtown, Los Penasquitos Canyon, Military Facilities, Mission Valley, Reserve
Community Plan Areas - Representative Planning and Sponsor Groups (Non-City of San Diego)	36	28	78%	County Islands, Jamul, North County Metro, North Mountain, Otay, Pala - Pauma, San Dieguito, Spring Valley
Elementary School Districts	24	10	42%	Gen Bond Solana Beach-sfid2016-1a Meas Jj 11/08/16, Gen Elem Cajon Valley Union, Gen Elem Chula Vista, Gen Elem Dehesa, Gen Elem Del Mar Union, Gen Elem Encinitas Union, Gen Elem Escondido Union, Gen Elem Julian Union, Gen Elem La Mesa-spring Valley, Gen Elem National, Gen Elem Rancho Santa Fe, Gen Elem San Pasqual Union, Gen Elem Santee, Gen Elem South Bay Union
High School Districts	6	1	17%	High Escondido Union, High Grossmont Union, High Julian Union, High San Dieguito Union, High Sweetwater Union



# County of San Diego IRC

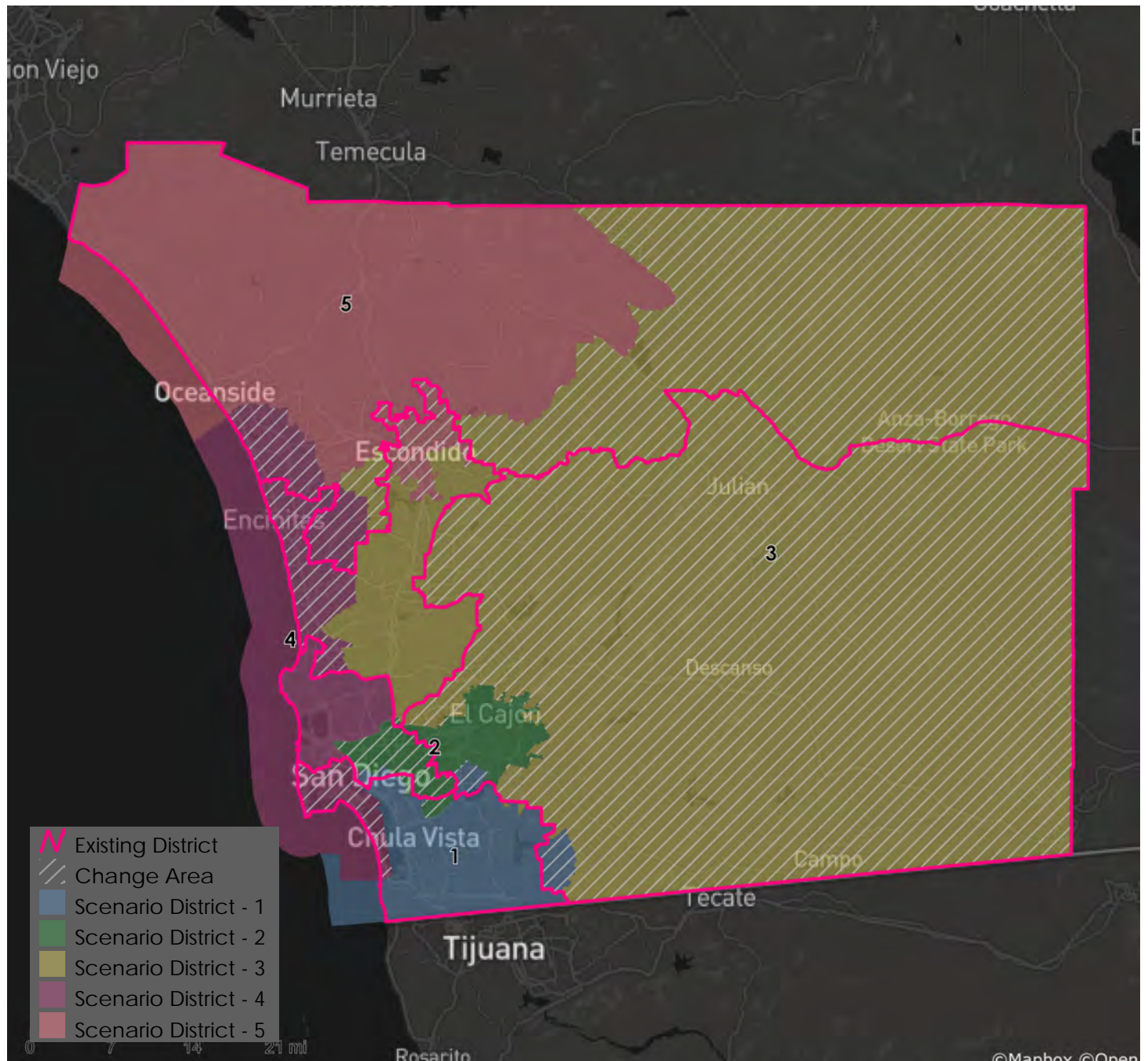
## Draft Map 13a v.1 --Supervisory Districts Summary Statistics

11/19/2021



COI Category	Total # of COIs	# of COIs Preserved in Minimum Districts	% of COIs Preserved in Minimum Districts	COIs Not Preserved in Minimum # of Districts
Unified School Districts	15	7	47%	Unif Bond Poway-sfid 2002-1, Prop U 11/5/02, 2019ref, Unif Bond San Marcos Sfid #1-6/04/96, 2004-1 Ref, Unified Carlsbad, Unified Oceanside, Unified San Diego, Unified Valley Center-pauma, Unified Vista, Unified Warner
Fire Districts	13	9	69%	Rancho Santa Fe Fire Protection Dist. Of Sd County, San Marcos Fire Protection District, San Miguel Consol. Fire Protection District, Valley Center Fire Protection District
Public Utility Districts	2	2	100%	
Sanitation Districts	4	3	75%	San Diego County Sanitation District L&I
Water Districts	50	36	72%	Helix Water District Land, Olivenhain Municipal Water District, Otay Water District, Padre Dam Muni Water Imp Dist #1 (Eastern Portion), Padre Dam Muni Water Imp Dist B, Padre Dam Municipal Water District, Rincon Del Diablo Muni Id.E (Formerly F&G), Rincon Del Diablo Muni Water Imp Dist A, Rincon Del Diablo Municipal Water District, South Bay Irrigation Land, Vallecitos Water District, Vallecitos Water Imp Dist No 6 - Sewer Service, Valley Center Municipal Water District, Vista Irrigation Land

\*Many Community Builder spatial depictions (polygons) of COIs are general, represent multiple COIs, or represent a single proposed supervisory district; therefore not all polygons can be maintained undivided, even when the intent of the COI is respected. The category, COIs Not Preserved in Minimum # of Districts includes any polygon divided even minimally by a district boundary; the name of the COI (last column) is that provided by the submitter.



### Metadata

Run Date/Time: 2021-11-23 07:57:25  
 Workflow Directory: X:\F2089\_San\_Diego\_County\Projects\Alteryx\  
 Feature Class: File: gdb:X:\F2089\_San\_Diego\_County\Data\Redist.gdb\Blocks\_2020\_02  
 Scenario: Districts\_DraftMap\_13a\_1