

County of San Diego IRC Approved Mapping Motion 11/19/21

ON MOTION of Commissioner Caterina, seconded by Commissioner Inman, the Commission approved to move forward with Draft Maps 13a and 14 with the following specific tasks to FLO Analytics:

For Map 14:

1. Replicate map 13b by moving unincorporated area east of Encinitas, north of the City of San Diego, south of the City of San Marcos including Harmony Grove, Rancho Santa Fe, Elfin Forest, Eden Valley, Del Dios, Whispering Palms, Sun Valley and Fairbanks Ranch to District 2
2. Move the area in District 1 that is approximately east of Lower Otay Reservoir to the County border into District 2, including Jamul
3. Move Escondido into District 2 and move Pendleton, Fallbrook, Bonsall, Rainbow, Hidden Meadows and the Indian reservations/tribes north and east of Escondido including San Pasqual, La Jolla, Rincon, Los Coyotes, Pauma, Pala and Valley Center into District 5
4. **Move Coronado into District 1**

Draft Map 14 versions 1-4 (e.g., 14 v.1) reflect individual motion tasks.

Please note the district numbers in this map do not correspond to the numbers of existing supervisorial districts. District numbers from prior IRC draft maps have been adjusted to more closely align with population density of existing district boundaries to the extent possible.

COUNTY OF SAN DIEGO
SUPERVISORIAL DISTRICTS
DRAFT MAP 14V.4 - 11/19/2021 MEETING



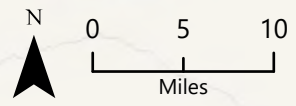
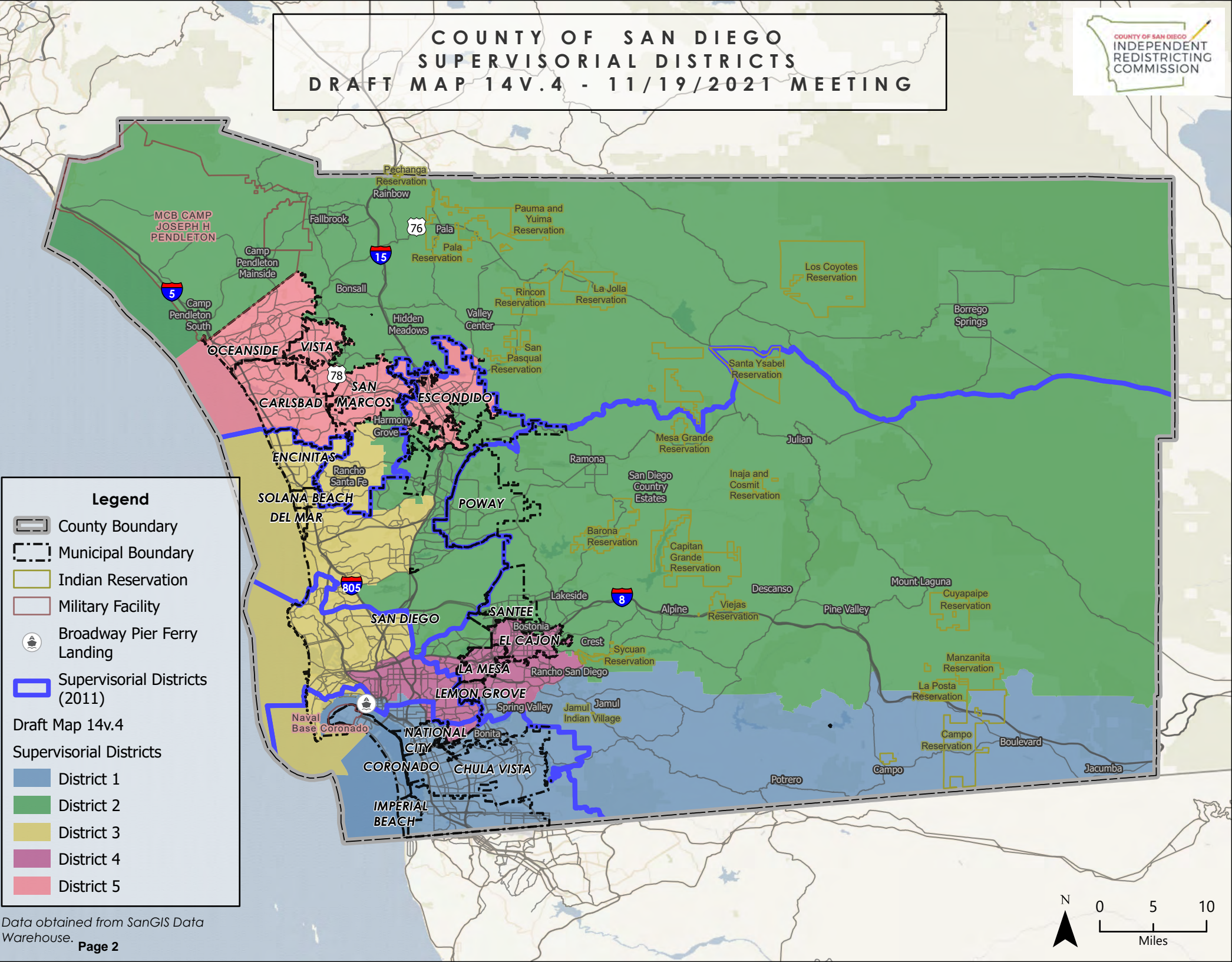
Legend

- County Boundary
- Municipal Boundary
- Indian Reservation
- Military Facility
- Broadway Pier Ferry Landing
- Supervisory Districts (2011)

Draft Map 14v.4

Supervisory Districts

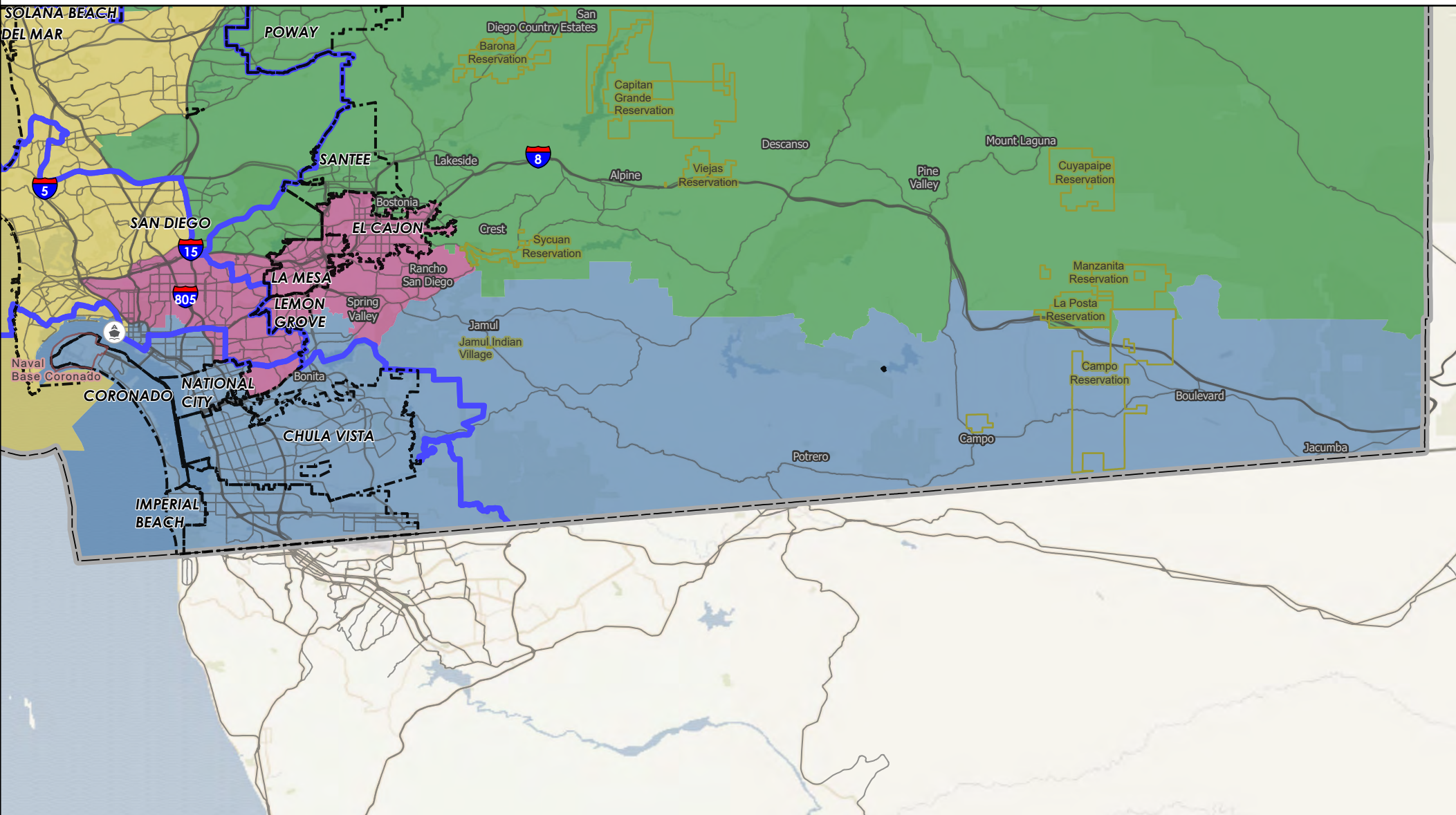
- District 1
- District 2
- District 3
- District 4
- District 5



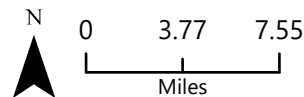
COUNTY OF SAN DIEGO

SUPERVISORIAL DISTRICTS - DRAFT MAP 14V.4

11/19/2021 MEETING DISTRICT 1



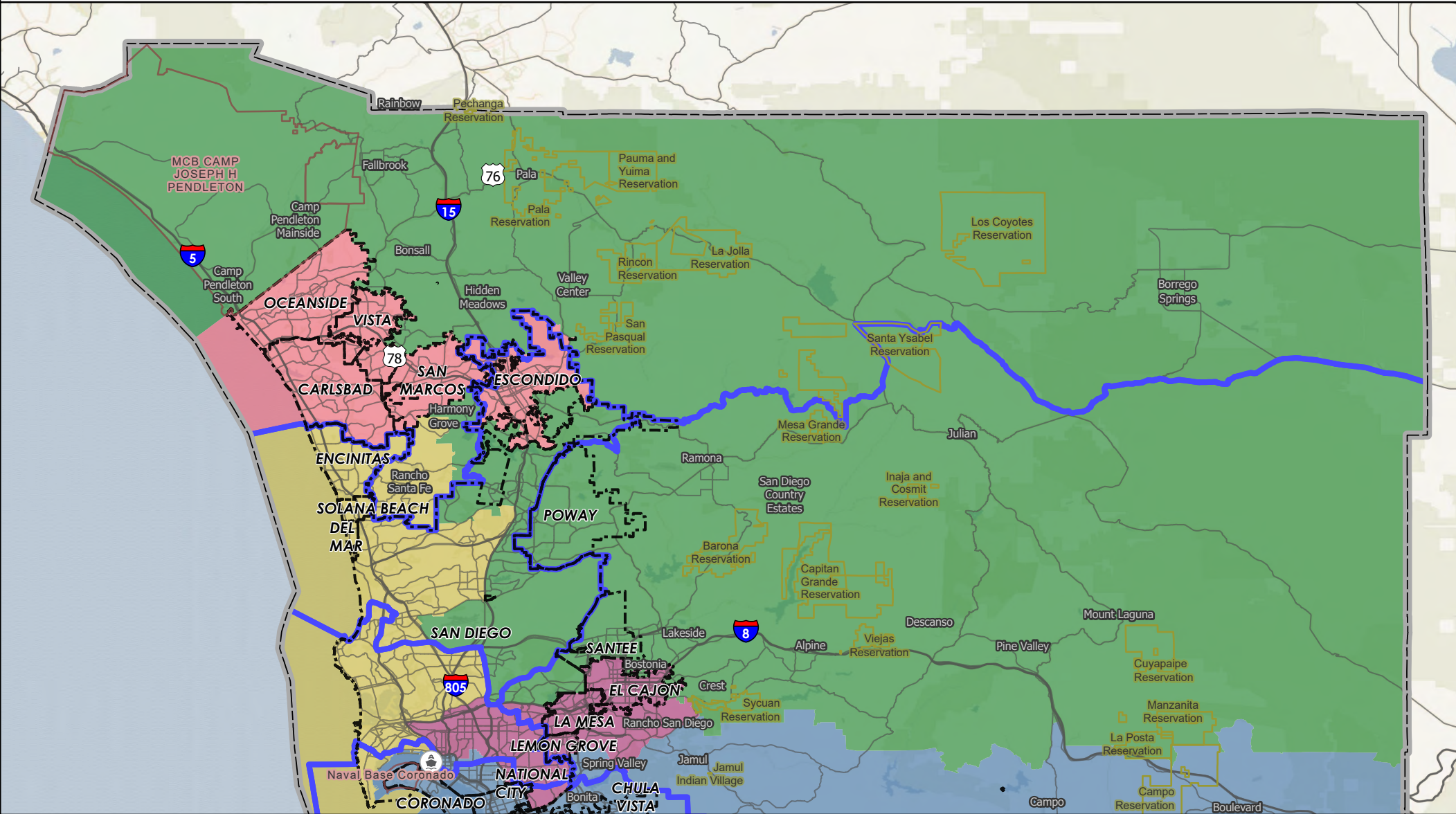
- | | |
|--------------------------------|-------------------------|
| County Boundary | Draft Map 14v.4 |
| Municipal Boundary | Supervisorial Districts |
| Indian Reservation | District 1 |
| Military Facility | District 2 |
| Broadway Pier Ferry Landing | District 3 |
| Supervisorial Districts (2011) | District 4 |
| | District 5 |



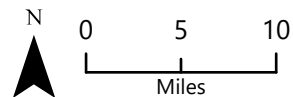
COUNTY OF SAN DIEGO

SUPERVISORIAL DISTRICTS - DRAFT MAP 14V.4

11/19/2021 MEETING DISTRICT 2



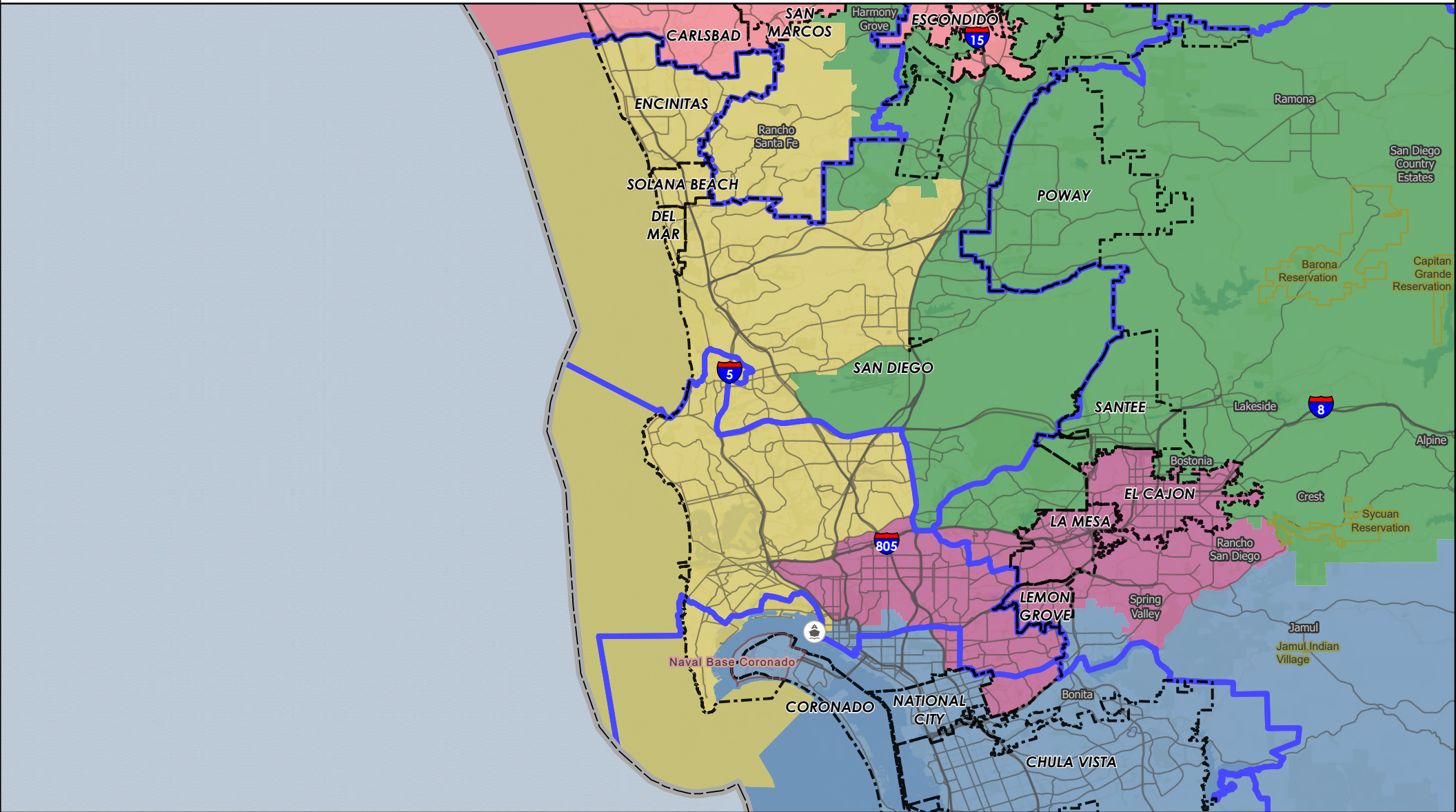
- | | |
|--------------------------------|-------------------------|
| County Boundary | Draft Map 14v.4 |
| Municipal Boundary | Supervisorial Districts |
| Indian Reservation | District 1 |
| Military Facility | District 2 |
| Broadway Pier Ferry Landing | District 3 |
| Supervisorial Districts (2011) | District 4 |
| | District 5 |



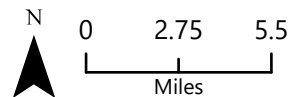
COUNTY OF SAN DIEGO

SUPERVISORIAL DISTRICTS - DRAFT MAP 14V.4

11/19/2021 MEETING DISTRICT 3



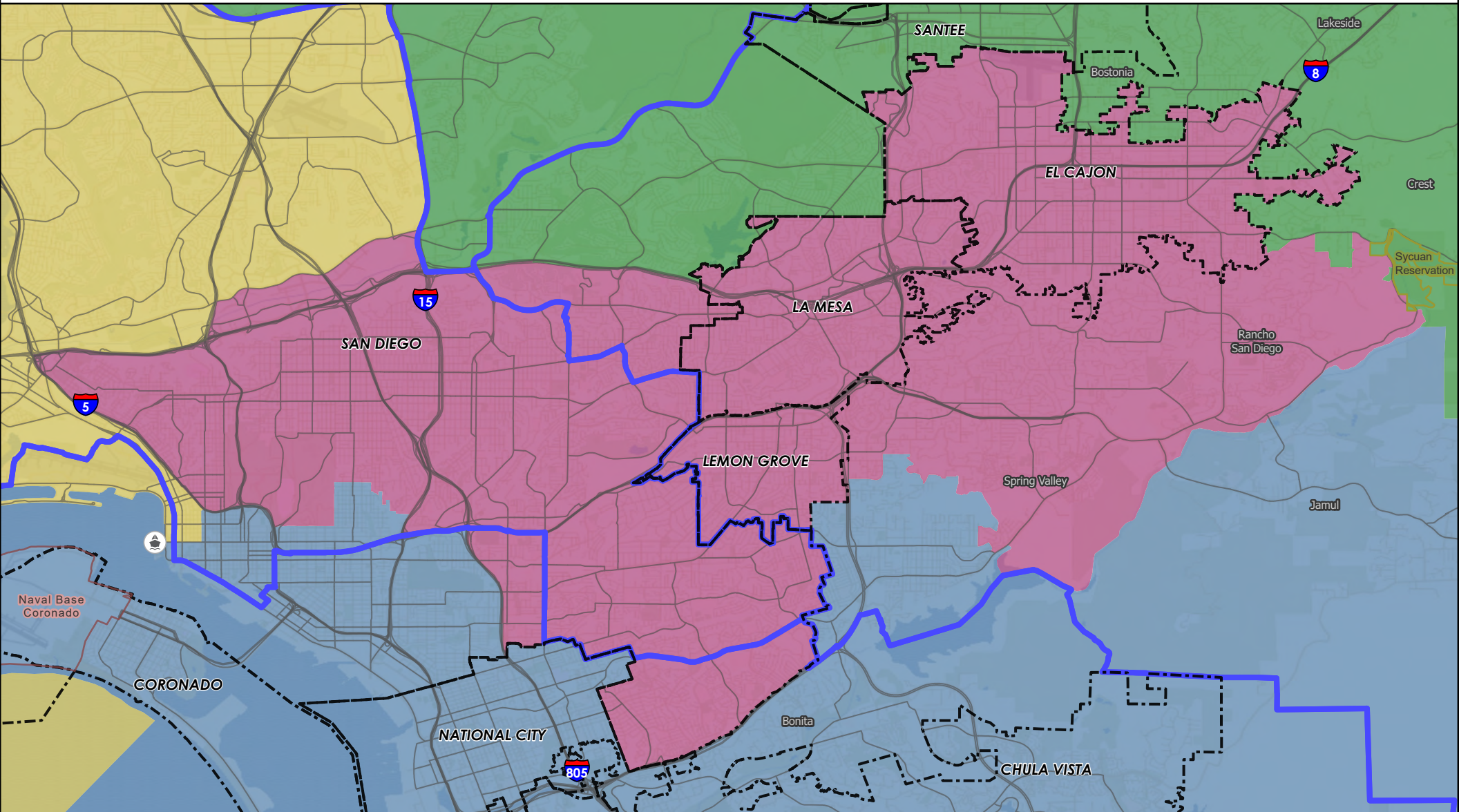
- | | |
|--------------------------------|-------------------------|
| County Boundary | Draft Map 14v.4 |
| Municipal Boundary | Supervisorial Districts |
| Indian Reservation | District 1 |
| Military Facility | District 2 |
| Broadway Pier Ferry Landing | District 3 |
| Supervisorial Districts (2011) | District 4 |
| | District 5 |



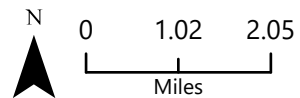
COUNTY OF SAN DIEGO

SUPERVISORIAL DISTRICTS - DRAFT MAP 14V.4

11/19/2021 MEETING DISTRICT 4



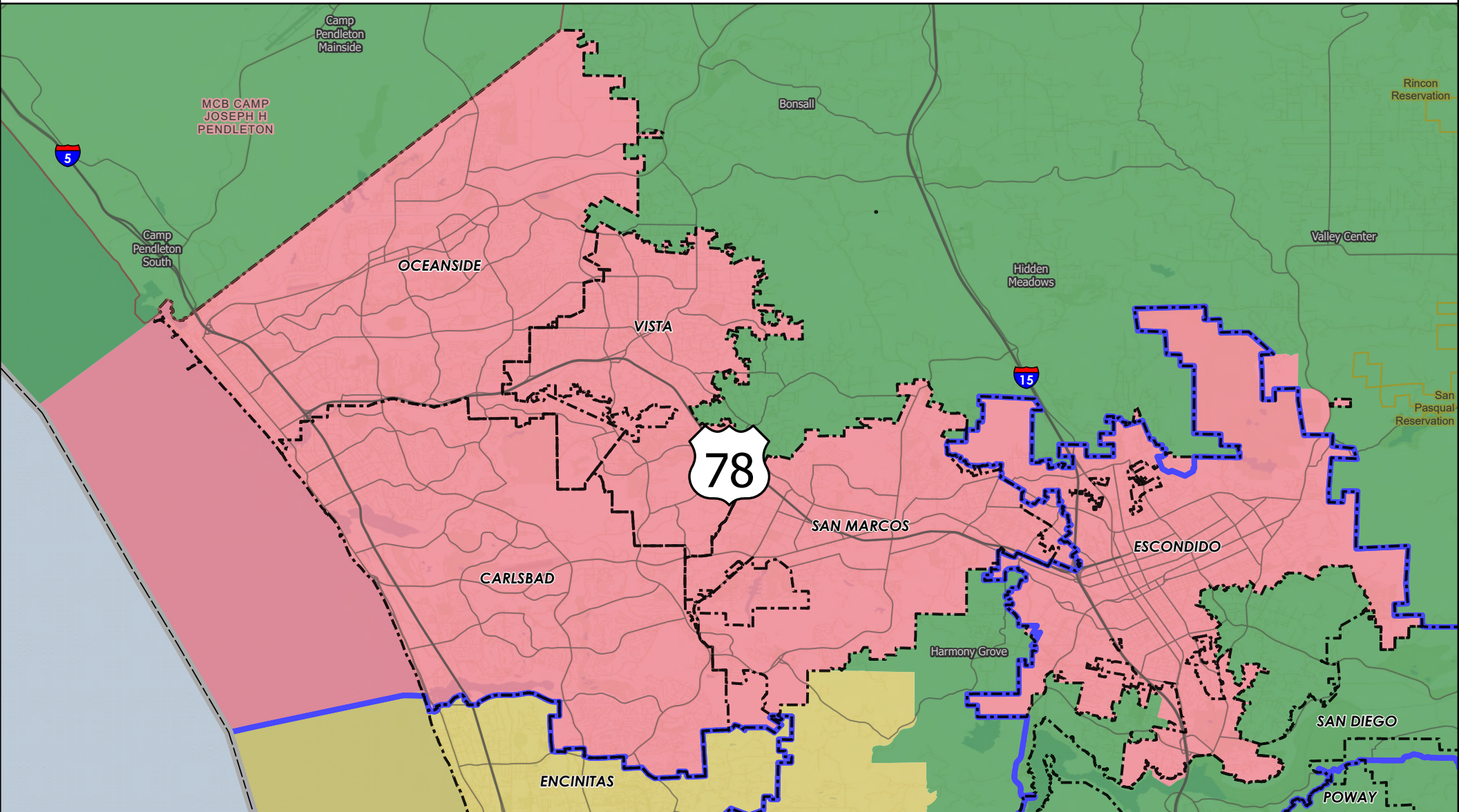
- | | |
|--------------------------------|-------------------------|
| County Boundary | Draft Map 14v.4 |
| Municipal Boundary | Supervisorial Districts |
| Indian Reservation | District 1 |
| Military Facility | District 2 |
| Broadway Pier Ferry Landing | District 3 |
| Supervisorial Districts (2011) | District 4 |
| | District 5 |



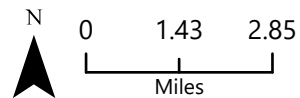
COUNTY OF SAN DIEGO

SUPERVISORIAL DISTRICTS - DRAFT MAP 14V.4

11/19/2021 MEETING DISTRICT 5



- | | |
|--------------------------------|-------------------------|
| County Boundary | Draft Map 14v.4 |
| Municipal Boundary | Supervisorial Districts |
| Indian Reservation | District 1 |
| Military Facility | District 2 |
| Broadway Pier Ferry Landing | District 3 |
| Supervisorial Districts (2011) | District 4 |
| | District 5 |



Equal Population Criterion

Ideal Population	660,452
Overall Deviation	5.4%
<div> <div>< 5.0%</div> <div>5.0 - 10.0%</div> <div>> 10.0%</div> </div>	

California Statewide Database Adjusted
(incarcerated persons reallocation) 2020
Census P.L. 94-171 Redistricting Data
Summary Files - Total Population.

Total Population & Deviation per District

District ID	Total Population	Over / Under Ideal	Deviation From Ideal
1	681,300	20,848	3.2%
2	667,533	7,081	1.1%
3	661,405	953	0.1%
4	645,604	-14,848	-2.2%
5	646,420	-14,032	-2.1%

Total Population by Race/Ethnicity per District

District ID	White	Black or African American	American Indian or Alaska Native	Asian	Native Hawaiian and Pacific Islander	Some Other Race	Two or More Races	Hispanic/Latino
1	20.2%	5.2%	0.3%	11.0%	0.4%	0.5%	3.5%	58.9%
2	57.3%	2.7%	0.9%	10.4%	0.3%	0.6%	5.8%	22.0%
3	54.6%	2.5%	0.2%	20.1%	0.3%	0.7%	6.1%	15.7%
4	38.5%	9.3%	0.3%	11.4%	0.5%	0.6%	5.0%	34.4%
5	45.4%	2.4%	0.3%	7.7%	0.5%	0.5%	5.0%	38.2%

California Statewide Database (CA SWDB) Adjusted 2020 Census P.L. 94-171 Redistricting Data - Total Population by Race and Hispanic/Latino origin.

VAP by Race/Ethnicity per District

District	White	Black or African American	American Indian or Alaska Native	Asian	Native Hawaiian and Pacific Islander	Some Other Race	Two or More Races	Hispanic/Latino
1	22.9%	5.5%	0.3%	11.8%	0.4%	0.4%	3.0%	55.6%
2	60.8%	2.8%	0.9%	10.4%	0.4%	0.5%	4.5%	19.8%
3	56.9%	2.5%	0.2%	20.4%	0.3%	0.6%	4.9%	14.3%
4	41.8%	9.1%	0.3%	12.1%	0.5%	0.5%	4.3%	31.3%
5	49.3%	2.6%	0.3%	8.3%	0.5%	0.5%	4.1%	34.3%

CA SWDB Adjusted 2020 Census P.L. 94-171 Redistricting Data - Voting-age Population (VAP) by Race and Hispanic/Latino origin.

CVAP by Race/Ethnicity per District

District ID	White	Black or African American	American Indian or Alaska Native	Asian	Native Hawaiian and Pacific Islander	Two or More Races	Hispanic/Latino
1	28.7%	6.6%	0.2%	12.1%	0.6%	2.0%	49.6%
2	68.9%	3.0%	0.9%	8.1%	0.2%	2.7%	15.9%
3	64.7%	2.9%	0.2%	15.7%	0.3%	3.0%	12.9%
4	48.2%	11.0%	0.2%	10.7%	0.5%	3.0%	26.2%
5	58.2%	3.2%	0.4%	7.1%	0.4%	2.7%	27.7%

CA SWDB Adjusted 2015-2019 American Community Survey Citizen Voting-age Population (CVAP) by Race and Ethnicity Special Tabulation. Rounding may lead to summation of percentages not equal to 100% (+/- 1%).

Contiguity Criterion

Are all districts contiguous at more than a point or by bridge or by regular ferry service? **Yes**

Compactness Criterion

Where it does not conflict with other mandatory criteria, districts are compact such that nearby areas of population are not bypassed for more distant areas of population: **Yes**

Criteria Specific to the County of San Diego

At least three districts shall include unincorporated territory.

Number of districts that include unincorporated territory: **5**

Districts that include unincorporated territory:

District 1, District 2, District 3, District 4, District 5

Two districts must be comprised of primarily unincorporated territory.

Number of districts that are primarily unincorporated territory: **2**

Districts that are primarily unincorporated territory:

District 1, District 2

Land Area Table

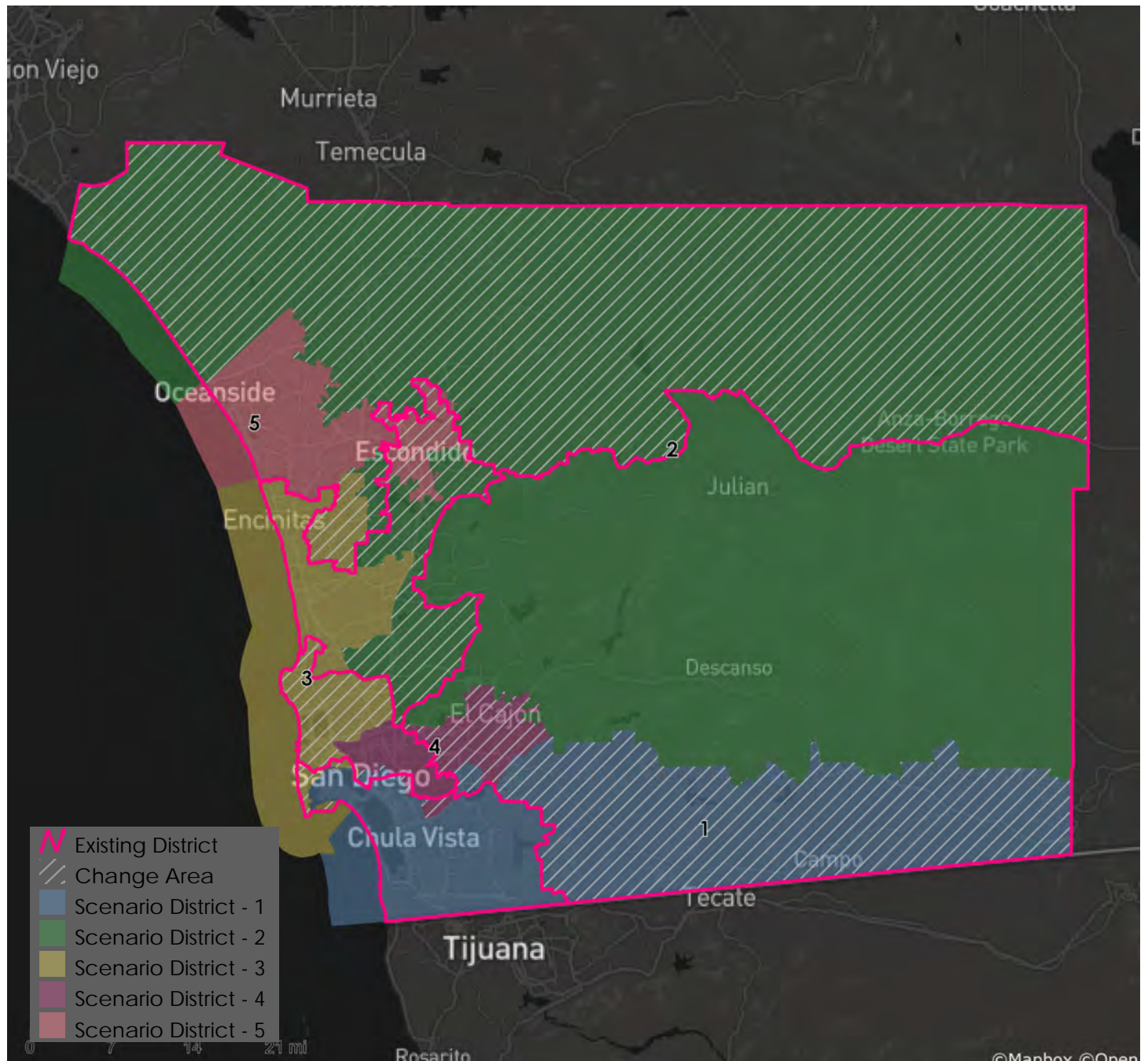
District	District Area (sq mi)	Unincorporated Area (sq mi)	Percent Unincorporated Area	Incorporated Area (sq mi)	Percent Incorporated Area
District 1	652	523	80.2%	129	19.8%
District 2	3,162	2,987	94.5%	175	5.5%
District 3	186	30	15.9%	156	84.1%
District 4	91	22	24.5%	69	75.5%
District 5	169	6	3.5%	163	96.5%

Preservation of Geographic Integrity Criteria (i.e., minimize division of cities, communities of interest, etc.)

COI Category	Total # of COIs	# of COIs Preserved in Minimum Districts	% of COIs Preserved in Minimum Districts	COIs Not Preserved in Minimum # of Districts
*Community Builder spatial-submitted COIs	27	10	37%	78 Cooridor, AAPI communities, BIPOC Immigrant & Refugee Communities, BIPOC Immigrant and Refugee, BIPOC, Immigrant & Refugee, Carlsbad and North County neighbors, Fallbrook, I live in North Encanto but a lot of our resources as in La Mesa, Lemon Grove, or in the city., Inland North County, Lakeside and unincorporated areas within the existing District 2, Magic Back Country, North Coastal: includes the cities of Carlsbad, Encinitas, Solano Beach, and Del Mar along with the unincorporated communities of Fairbank Ranch and Rancho Santa Fe., North County San Diego Asian Diaspora, South Bay, Twin Oaks Valley, University City/La Jolla, Valley Center
Municipalities	18	17	94%	San Diego
Census Designated Places	39	38	97%	Rancho San Diego Cdp
Indian Reservations	19	19	100%	
Military Installations	22	21	95%	Mcas Miramar
Community Plan Areas (City of San Diego)	57	53	93%	Downtown, Military Facilities, Mission Valley, Reserve
Community Plan Areas - Representative Planning and Sponsor Groups (Non-City of San Diego)	36	26	72%	Bonsall, Boulevard, County Islands, Hidden Meadows, Lake Morena / Campo, Mountain Empire, North County Metro, San Dieguito, Spring Valley, Valle De Oro
Elementary School Districts	24	13	54%	Gen Bond Solana Beach-sfid2016-1a Meas Jj 11/08/16, Gen Elem Cajon Valley Union, Gen Elem Dehesa, Gen Elem Encinitas Union, Gen Elem Escondido Union, Gen Elem Jamul-dulzura Union, Gen Elem La Mesa-spring Valley, Gen Elem National, Gen Elem Rancho Santa Fe, Gen Elem San Pasqual Union, Gen Elem Santee
High School Districts	6	2	33%	High Escondido Union, High Grossmont Union, High San Dieguito Union, High Sweetwater Union

COI Category	Total # of COIs	# of COIs Preserved in Minimum Districts	% of COIs Preserved in Minimum Districts	COIs Not Preserved in Minimum # of Districts
Unified School Districts	15	6	40%	Unif Bond Poway-sfid 2002-1, Prop U 11/5/02, 2019ref, Unif Bond San Marcos Sfid #1-6/04/96, 2004-1 Ref, Unified Bonsall, Unified Mt Empire, Unified Oceanside, Unified Poway, Unified San Diego, Unified Valley Center-pauma, Unified Vista
Fire Districts	13	9	69%	Rancho Santa Fe Fire Protection Dist. Of Sd County, San Marcos Fire Protection District, San Miguel Consol. Fire Protection District, Vista Fire Protection District
Public Utility Districts	2	2	100%	
Sanitation Districts	4	2	50%	Buena Sanitation Maint Dist. L&I, San Diego County Sanitation District L&I
Water Districts	50	32	64%	Helix Water District Land, Leucadia Wastewater District, Olivenhain Municipal Water District, Otay Water District, Padre Dam Muni Water Imp Dist #1 (Eastern Portion), Padre Dam Muni Water Imp Dist B, Padre Dam Municipal Water District, Questhaven Municipal Water District, Rainbow Municipal Water District, Rincon Del Diablo Muni Id.E (Formerly F&G), Rincon Del Diablo Muni Water Imp Dist A, Rincon Del Diablo Municipal Water District, San Dieguito Water District Land, South Bay Irrigation Land, Vallecitos Water District, Vallecitos Water Imp Dist No 6 - Sewer Service, Valley Center Municipal Water District, Vista Irrigation Land

*Many Community Builder spatial depictions (polygons) of COIs are general, represent multiple COIs, or represent a single proposed supervisorial district; therefore not all polygons can be maintained undivided, even when the intent of the COI is respected. The category, COIs Not Preserved in Minimum # of Districts includes any polygon divided even minimally by a district boundary; the name of the COI (last column) is that provided by the submitter.



Metadata

Run Date/Time:	2021-11-22 19:32:25
Workflow Directory:	X:\F2089_San_Diego_County\Projects\Alteryx\
Feature Class:	File: gdb:X:\F2089_San_Diego_County\Data\Redist.gdb\Blocks_2020_02
Scenario:	Districts_DraftMap_14_4