

COUNTY OF SAN DIEGO SUPERVISORIAL DISTRICTS PUBLIC SUBMITTED MAP 13

COUNTY OF SAN DIEGO
INDEPENDENT
REDISTRICTING
COMMISSION

Legend

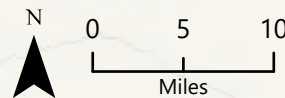
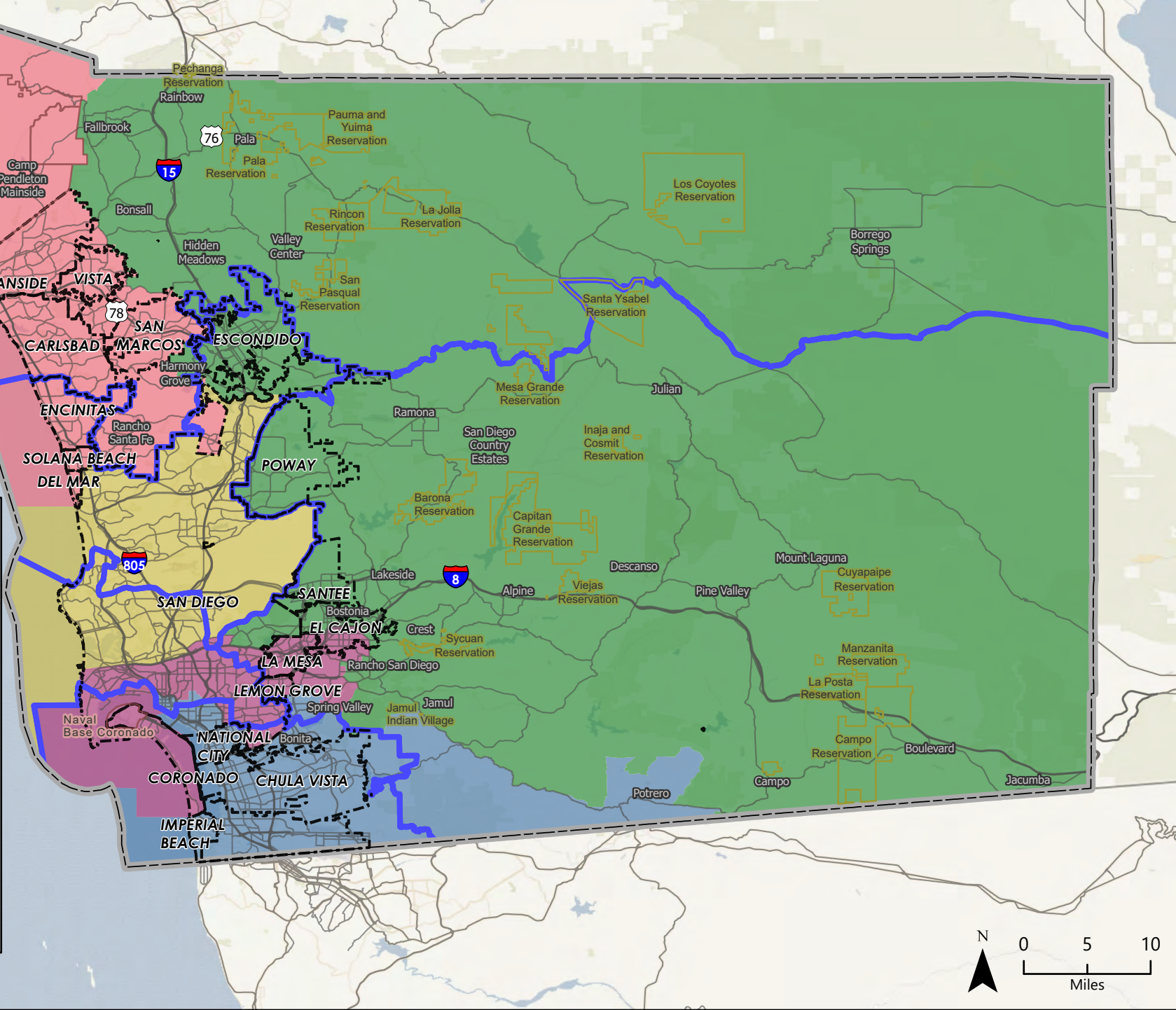
- County Boundary
- Municipal Boundary
- Indian Reservation
- Military Facility
- Supervisory Districts (2011)

Public Submitted Map 13

Supervisory Districts

- District 1
- District 2
- District 3
- District 4
- District 5

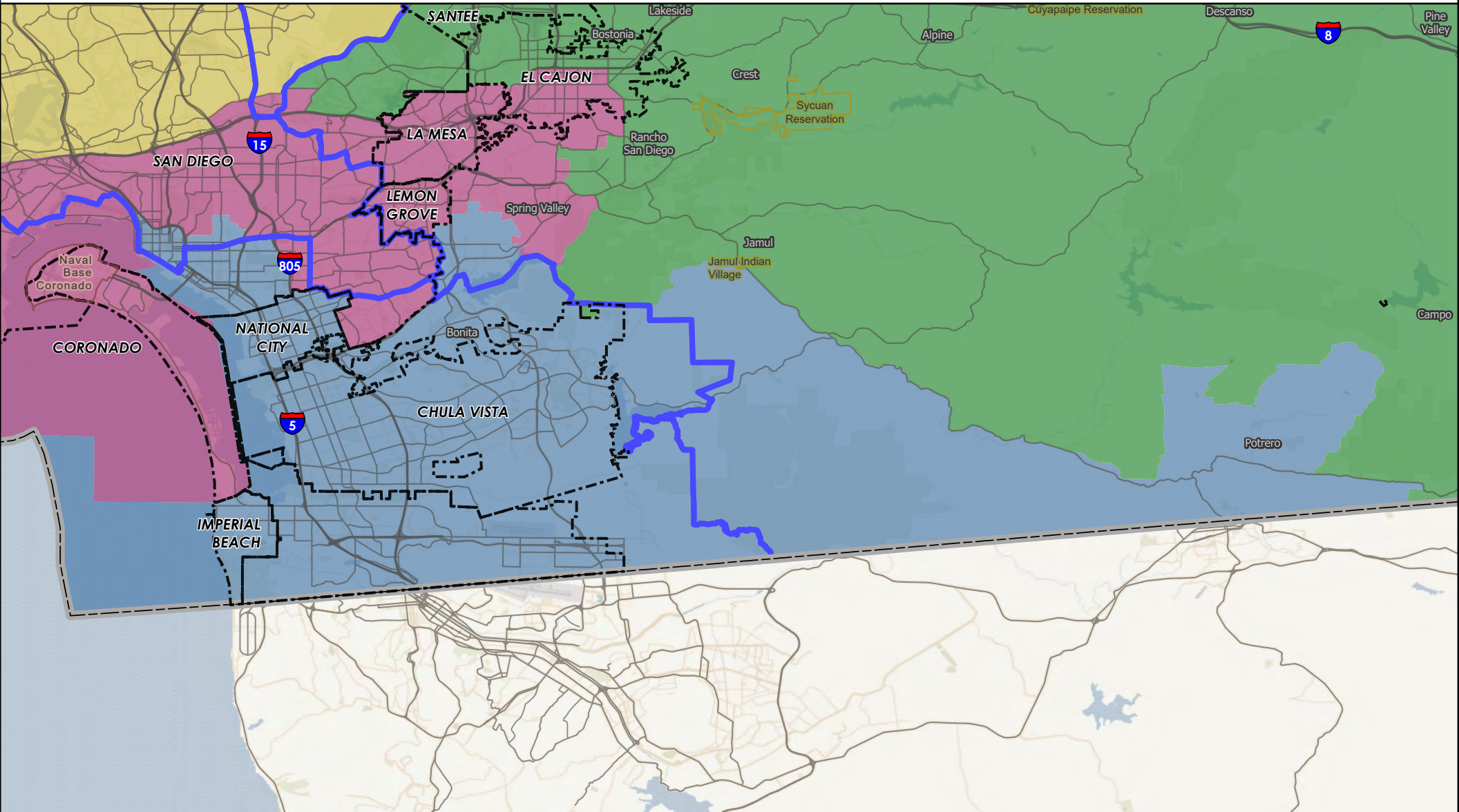
Data obtained from SanGIS Data Warehouse.



COUNTY OF SAN DIEGO

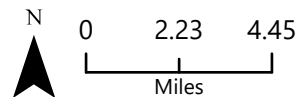
SUPERVISORIAL DISTRICTS - PUBLIC SUBMITTED MAP 13

DISTRICT 1



- County Boundary
- Municipal Boundary
- Indian Reservation
- Military Facility
- Supervisorial Districts (2011)

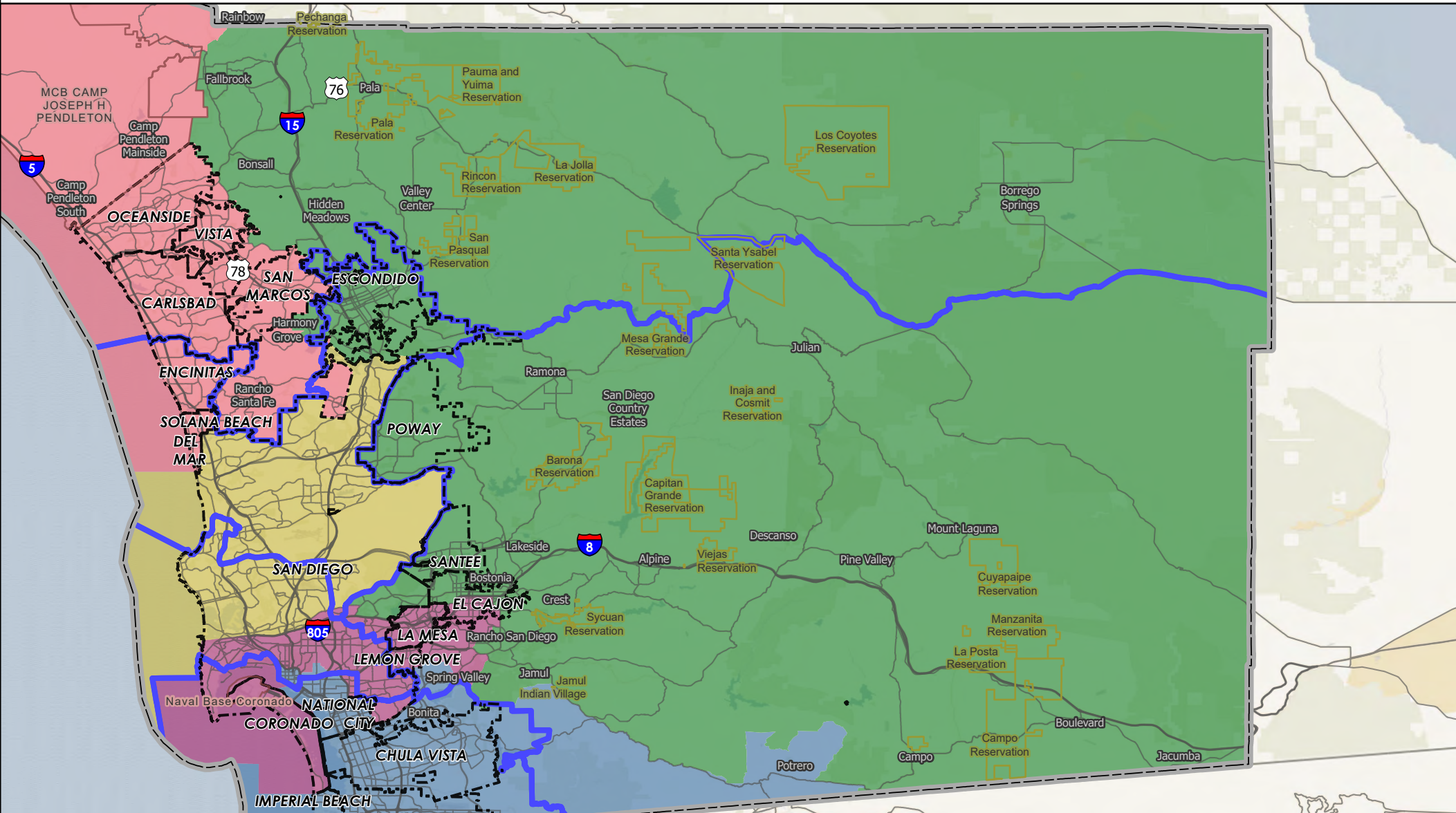
- Public Submitted Map 13
- Supervisorial Districts
- District 1
 - District 2
 - District 3
 - District 4
 - District 5



COUNTY OF SAN DIEGO

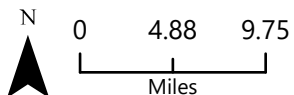
SUPERVISORIAL DISTRICTS - PUBLIC SUBMITTED MAP 13

DISTRICT 2



- County Boundary
- Municipal Boundary
- Indian Reservation
- Military Facility
- Supervisorial Districts (2011)

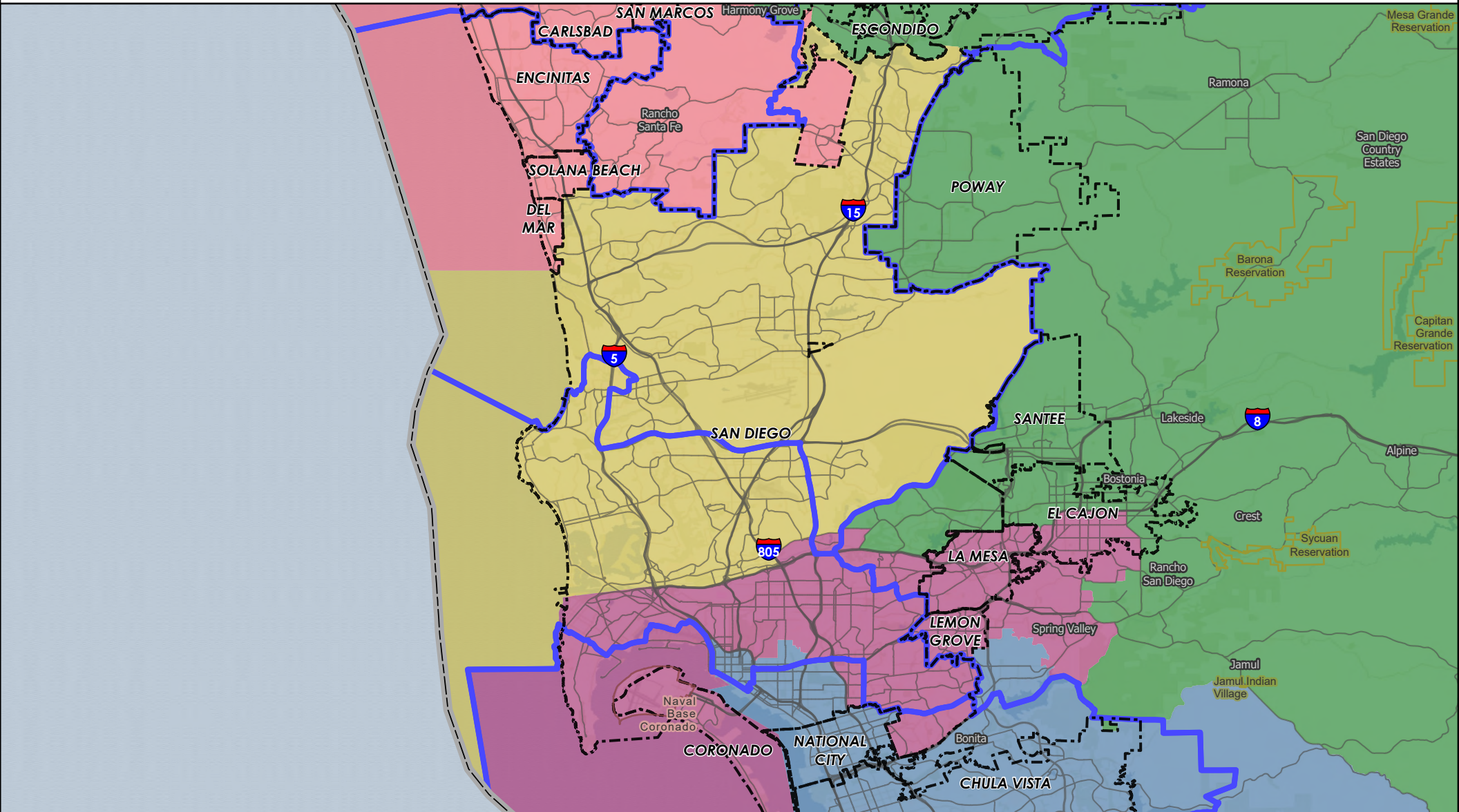
- Public Submitted Map 13
Supervisorial Districts
- District 1
 - District 2
 - District 3
 - District 4
 - District 5



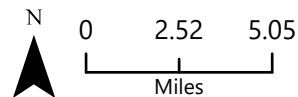
COUNTY OF SAN DIEGO

SUPERVISORIAL DISTRICTS - PUBLIC SUBMITTED MAP 13

DISTRICT 3



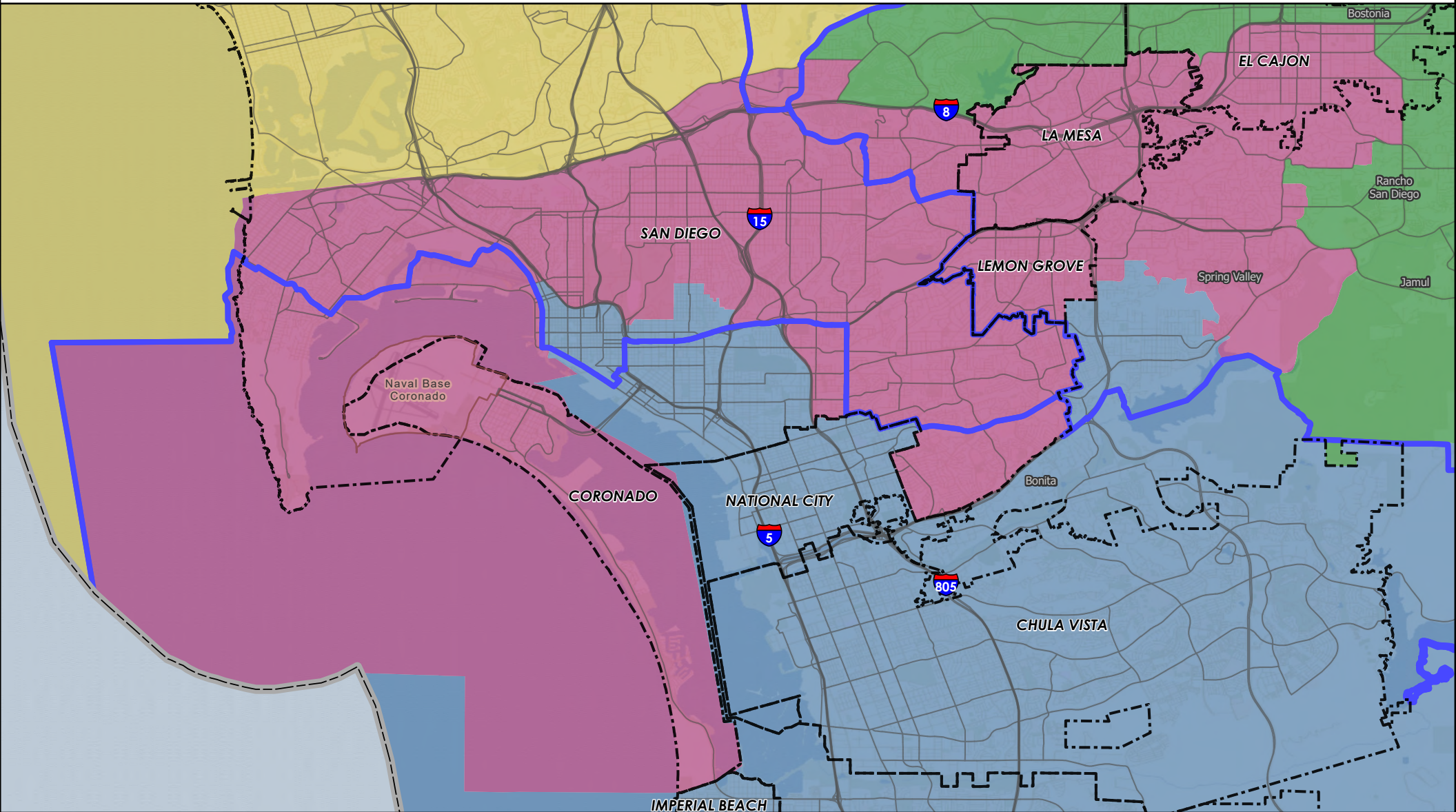
- | | |
|--------------------------------|-------------------------|
| County Boundary | Public Submitted Map 13 |
| Municipal Boundary | Supervisorial Districts |
| Indian Reservation | District 1 |
| Military Facility | District 2 |
| Supervisorial Districts (2011) | District 3 |
| | District 4 |
| | District 5 |



COUNTY OF SAN DIEGO

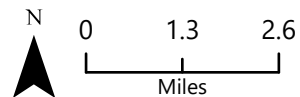
SUPERVISORIAL DISTRICTS - PUBLIC SUBMITTED MAP 13

DISTRICT 4



- County Boundary
- Municipal Boundary
- Indian Reservation
- Military Facility
- Supervisorial Districts (2011)

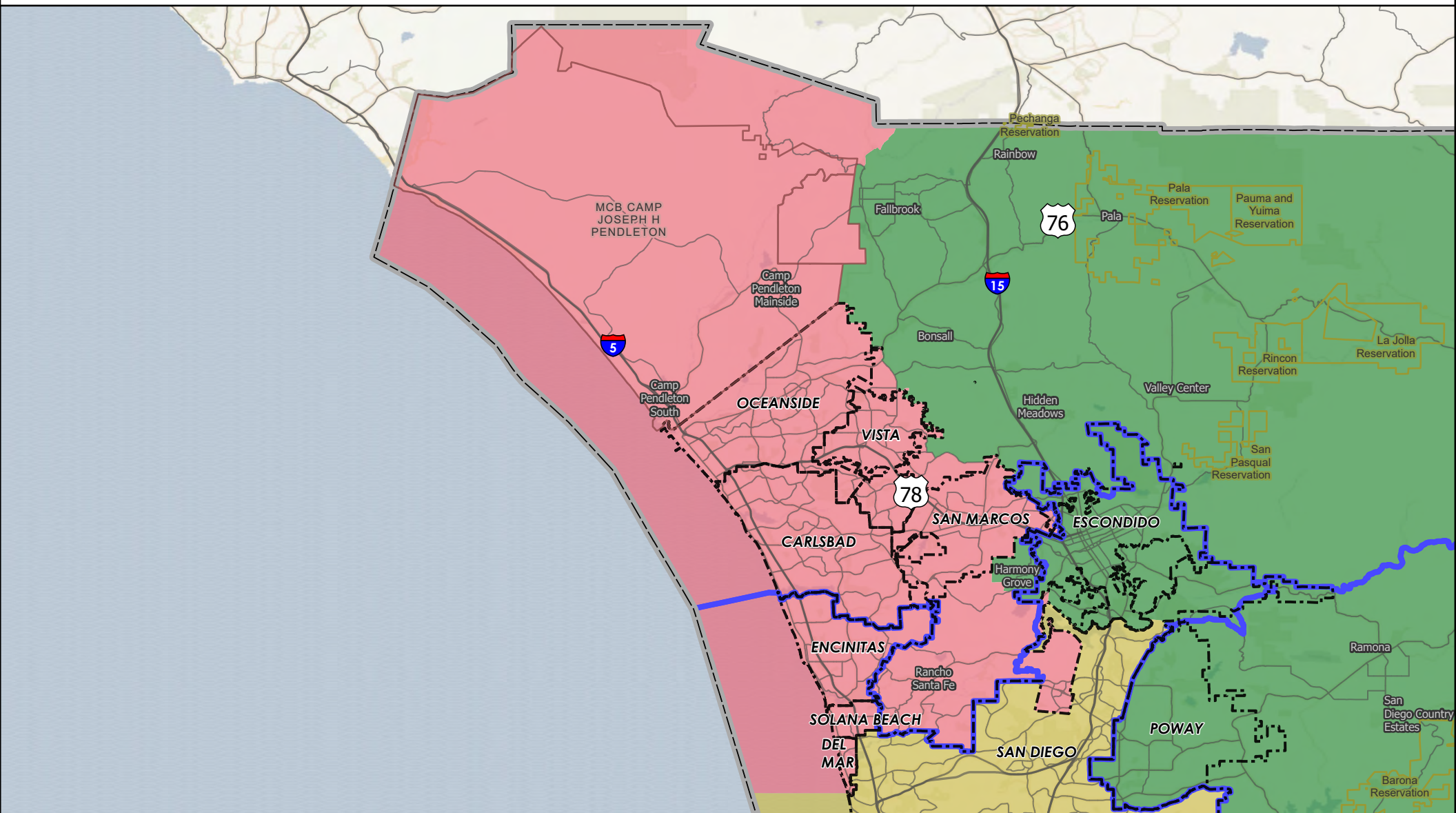
- Public Submitted Map 13
- Supervisorial Districts
- District 1
 - District 2
 - District 3
 - District 4
 - District 5



COUNTY OF SAN DIEGO

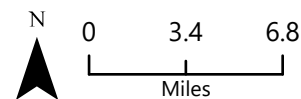
SUPERVISORIAL DISTRICTS - PUBLIC SUBMITTED MAP 13

DISTRICT 5



- County Boundary
- Municipal Boundary
- Indian Reservation
- Military Facility
- Supervisorial Districts (2011)

- Public Submitted Map 13
- Supervisorial Districts
- District 1
 - District 2
 - District 3
 - District 4
 - District 5



County of San Diego IRC

Public Submitted Map 13 --Supervisory Districts Summary Statistics

11/23/2021



Equal Population Criterion

Ideal Population		660,452
Overall Deviation		2.7%
< 5.0%	5.0 - 10.0%	> 10.0%

California Statewide Database Adjusted
(incarcerated persons reallocation) 2020
Census P.L. 94-171 Redistricting Data
Summary Files - Total Population.

Total Population & Deviation per District

District ID	Total Population	Over / Under Ideal	Deviation From Ideal
1	649,428	-11,024	-1.7%
2	664,602	4,150	0.6%
3	662,291	1,839	0.3%
4	667,274	6,822	1.0%
5	658,667	-1,785	-0.3%

Total Population by Race/Ethnicity per District

District ID	White	Black or African American	American Indian or Alaska Native	Asian	Native Hawaiian and Pacific Islander	Some Other Race	Two or More Races	Hispanic/Latino
1	18.1%	5.3%	0.2%	11.5%	0.4%	0.5%	3.5%	60.6%
2	54.5%	2.3%	1.0%	5.4%	0.3%	0.5%	5.2%	30.8%
3	49.9%	2.9%	0.2%	24.5%	0.3%	0.6%	6.3%	15.3%
4	40.0%	9.1%	0.3%	11.1%	0.5%	0.6%	5.1%	33.3%
5	52.6%	2.5%	0.3%	8.1%	0.5%	0.6%	5.2%	30.2%

California Statewide Database (CA SWDB) Adjusted 2020 Census P.L. 94-171 Redistricting Data - Total Population by Race and Hispanic/Latino origin.

VAP by Race/Ethnicity per District

District	White	Black or African American	American Indian or Alaska Native	Asian	Native Hawaiian and Pacific Islander	Some Other Race	Two or More Races	Hispanic/Latino
1	20.7%	5.6%	0.3%	12.3%	0.4%	0.4%	3.0%	57.3%
2	58.5%	2.3%	0.9%	5.9%	0.3%	0.5%	4.3%	27.3%
3	52.4%	2.9%	0.2%	24.7%	0.3%	0.6%	4.8%	14.0%
4	43.5%	8.9%	0.3%	11.7%	0.5%	0.6%	4.5%	30.1%
5	56.0%	2.7%	0.3%	8.4%	0.5%	0.5%	4.2%	27.4%

CA SWDB Adjusted 2020 Census P.L. 94-171 Redistricting Data - Voting-age Population (VAP) by Race and Hispanic/Latino origin.

CVAP by Race/Ethnicity per District

District ID	White	Black or African American	American Indian or Alaska Native	Asian	Native Hawaiian and Pacific Islander	Two or More Races	Hispanic/Latino
1	25.9%	6.8%	0.2%	12.7%	0.6%	2.1%	51.7%
2	67.8%	2.4%	1.0%	5.0%	0.3%	2.7%	20.7%
3	60.5%	3.2%	0.2%	19.2%	0.4%	3.3%	13.0%
4	50.2%	10.8%	0.2%	10.4%	0.5%	3.0%	24.8%
5	63.6%	3.2%	0.4%	6.8%	0.4%	2.4%	22.9%

CA SWDB Adjusted 2015-2019 American Community Survey Citizen Voting-age Population (CVAP) by Race and Ethnicity Special Tabulation. Rounding may lead to summation of percentages not equal to 100% (+/- 1%).

Contiguity Criterion

Are all districts contiguous at more than a point or by bridge or by regular ferry service? **Yes**

Compactness Criterion

Where it does not conflict with other mandatory criteria, districts are compact such that nearby areas of population are not bypassed for more distant areas of population: **Yes**

Criteria Specific to the County of San Diego

At least three districts shall include unincorporated territory.

Number of districts that include unincorporated territory: **5**

Districts that include unincorporated territory:

District 1, District 2, District 3, District 4, District 5

Two districts must be comprised of primarily unincorporated territory.

Number of districts that are primarily unincorporated territory: **3**

Districts that are primarily unincorporated territory:

District 1, District 2, District 5

Land Area Table

District	District Area (sq mi)	Unincorporated Area (sq mi)	Percent Unincorporated Area	Incorporated Area (sq mi)	Percent Incorporated Area
District 1	258	149	57.9%	109	42.1%
District 2	3,214	3,087	96.0%	127	4.0%
District 3	213	0	0.1%	213	99.9%
District 4	108	14	13.2%	94	86.8%
District 5	466	316	68.0%	149	32.0%

County of San Diego IRC

Public Submitted Map 13 --Supervisory Districts Summary Statistics

11/23/2021



Preservation of Geographic Integrity Criteria (i.e., minimize division of cities, communities of interest, etc.)

COI Category	Total # of COIs	# of COIs Preserved in Minimum Districts	% of COIs Preserved in Minimum Districts	COIs Not Preserved in Minimum # of Districts
*Community Builder spatial-submitted COIs	27	10	37%	78 Cooridor, AAPI communities, BIPOC Immigrant & Refugee Communities, BIPOC Immigrant and Refugee, BIPOC, Immigrant & Refugee, Carlsbad and North County neighbors, Fallbrook, Grossmont-Mt. Helix, I live in North Encanto but a lot of our resources as in La Mesa, Lemon Grove, or in the city., Inland North County, Lakeside and unincorporated areas within the existing District 2, Magic Back Country, North Coastal: includes the cities of Carlsbad, Encinitas, Solano Beach, and Del Mar along with the unincorporated communities of Fairbank Ranch and Rancho Santa Fe., North County San Diego Asian Diaspora, South Bay, Twin Oaks Valley, University City/La Jolla
Municipalities	18	10	56%	Coronado, Del Mar, El Cajon, Escondido, Imperial Beach, National City, San Diego, San Marcos
Census Designated Places	39	38	97%	Bonita Cdp
Indian Reservations	19	19	100%	
Military Installations	22	21	95%	Fallbrook Naval Weapons Statio
Community Plan Areas (City of San Diego)	57	39	68%	Black Mountain Ranch, Downtown, East Elliott, Encanto Neighborhoods, Greater Golden Hill, Mid-city:City Heights, Midway-pacific Highway, Military Facilities, Mission Bay Park, Mission Valley, Navajo, Old Town San Diego, Otay Mesa-nestor, Reserve, San Pasqual, Southeastern San Diego, Tierrasanta, Uptown
Community Plan Areas - Representative Planning and Sponsor Groups (Non-City of San Diego)	36	24	67%	Bonsall, County Islands, Fallbrook, Jamul, North County Metro, Pendleton - De Luz, Potrero, San Dieguito, Spring Valley, Sweetwater, Twin Oaks, Valle De Oro

County of San Diego IRC

Public Submitted Map 13 --Supervisory Districts Summary Statistics

11/23/2021



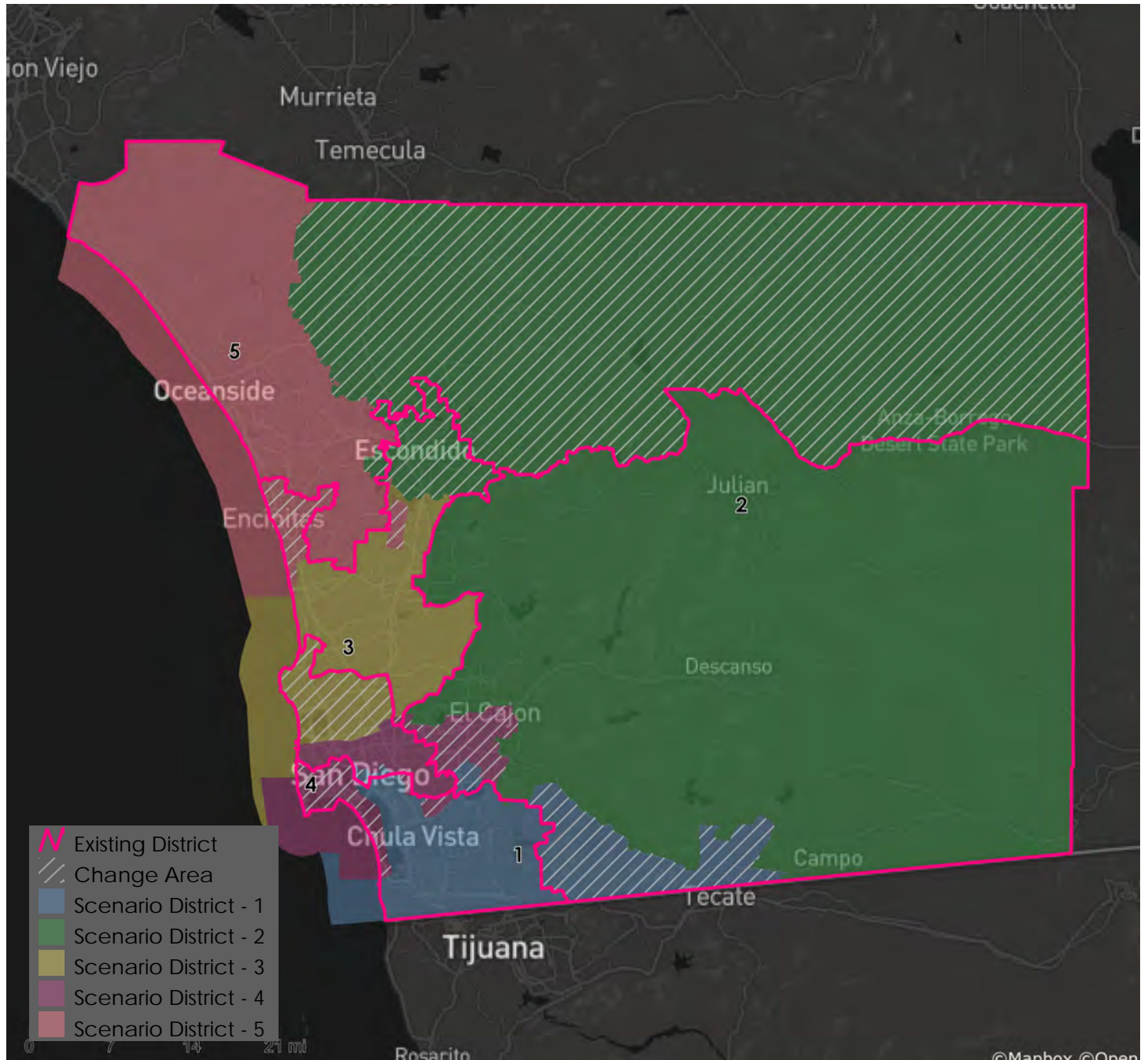
COI Category	Total # of COIs	# of COIs Preserved in Minimum Districts	% of COIs Preserved in Minimum Districts	COIs Not Preserved in Minimum # of Districts
Elementary School Districts	24	12	50%	Gen Bond Solana Beach-sfid2016-1a Meas Jj 11/08/16, Gen Elem Cajon Valley Union, Gen Elem Chula Vista, Gen Elem Del Mar Union, Gen Elem Escondido Union, Gen Elem Fallbrook Union, Gen Elem Jamul-dulzura Union, Gen Elem La Mesa-spring Valley, Gen Elem National, Gen Elem Santee, Gen Elem Solana Beach, Gen Elem South Bay Union
High School Districts	6	1	17%	High Escondido Union, High Fallbrook Union, High Grossmont Union, High San Dieguito Union, High Sweetwater Union
Unified School Districts	15	6	40%	Unif Bond Poway-sfid 2002-1, Prop U 11/5/02, 2019ref, Unif Bond San Marcos Sfid #1-6/04/96, 2004-1 Ref, Unified Bonsall, Unified Coronado, Unified Mt Empire, Unified Poway, Unified San Diego, Unified San Marcos, Unified Vista
Fire Districts	13	7	54%	Bonita-sunnyside Fire Protection District, North County Fire Protection District Of Sd County, Rancho Santa Fe Fire Protection Dist. Of Sd County, San Marcos Fire Protection District, San Miguel Consol. Fire Protection District, Vista Fire Protection District
Public Utility Districts	2	1	50%	Fallbrook Public Utility District
Sanitation Districts	4	2	50%	Buena Sanitation Maint Dist. L&I, San Diego County Sanitation District L&I
Water Districts	50	39	78%	Helix Water District Land, Olivenhain Municipal Water District, Otay Water District, Otay Water Imp Dist A, Rainbow Municipal Water District, Rincon Del Diablo Municipal Water District, South Bay Irrigation Land, Vallecitos Water District, Vallecitos Water Imp Dist No 5 - Sewer Service, Vallecitos Water Imp Dist No 6 - Sewer Service, Vista Irrigation Land

*Many Community Builder spatial depictions (polygons) of COIs are general, represent multiple COIs, or represent a single proposed supervisorial district; therefore not all polygons can be maintained undivided, even when the intent of the COI is respected. The category, COIs Not Preserved in Minimum # of Districts includes any polygon divided even minimally by a district boundary; the name of the COI (last column) is that provided by the submitter.

County of San Diego IRC

Public Submitted Map 13 --Supervisory Districts Summary Statistics

11/23/2021



Metadata

Run Date/Time:	2021-11-24 11:09:36
Workflow Directory:	X:\F2089_San_Diego_County\Projects\Alteryx\
Feature Class:	File: gdb:X:\F2089_San_Diego_County\Data\Redist.gdb\Blocks_2020_02
Scenario:	Districts_PubSub_13