

County of San Diego Independent Redistricting Commission December 9, 2021

Final Working Draft Map Scenarios

Commissioner Garcia:

Working from Draft Map 13av11:

- In District 1
 - Remove Skyline and Paradise Hills to District 4
 - Add La Presa and Coronado
- In the East County (District 2)
 - Remove the unincorporated areas of Valle de Oro and Spring Valley
 - Add Mira Mesa, Rancho Peñasquitos and the Convoy District (south of SR-52, east of I-805 and west of SR-163)
- In the Central area (District 4)
 - Remove Clairemont, Linda Vista, and the Convoy area and Mission Valley if necessary
 - Add Skyline, Paradise Hills, the unincorporated area of Valle de Oro, and Spring Valley excluding La Presa
- In the Coastal District (District 3)
 - Remove Coronado
 - Remove Rancho Peñasquitos and Mira Mesa
 - Add Clairemont and Linda Vista, add Mission Valley if needed or possible

Commissioner Russ:

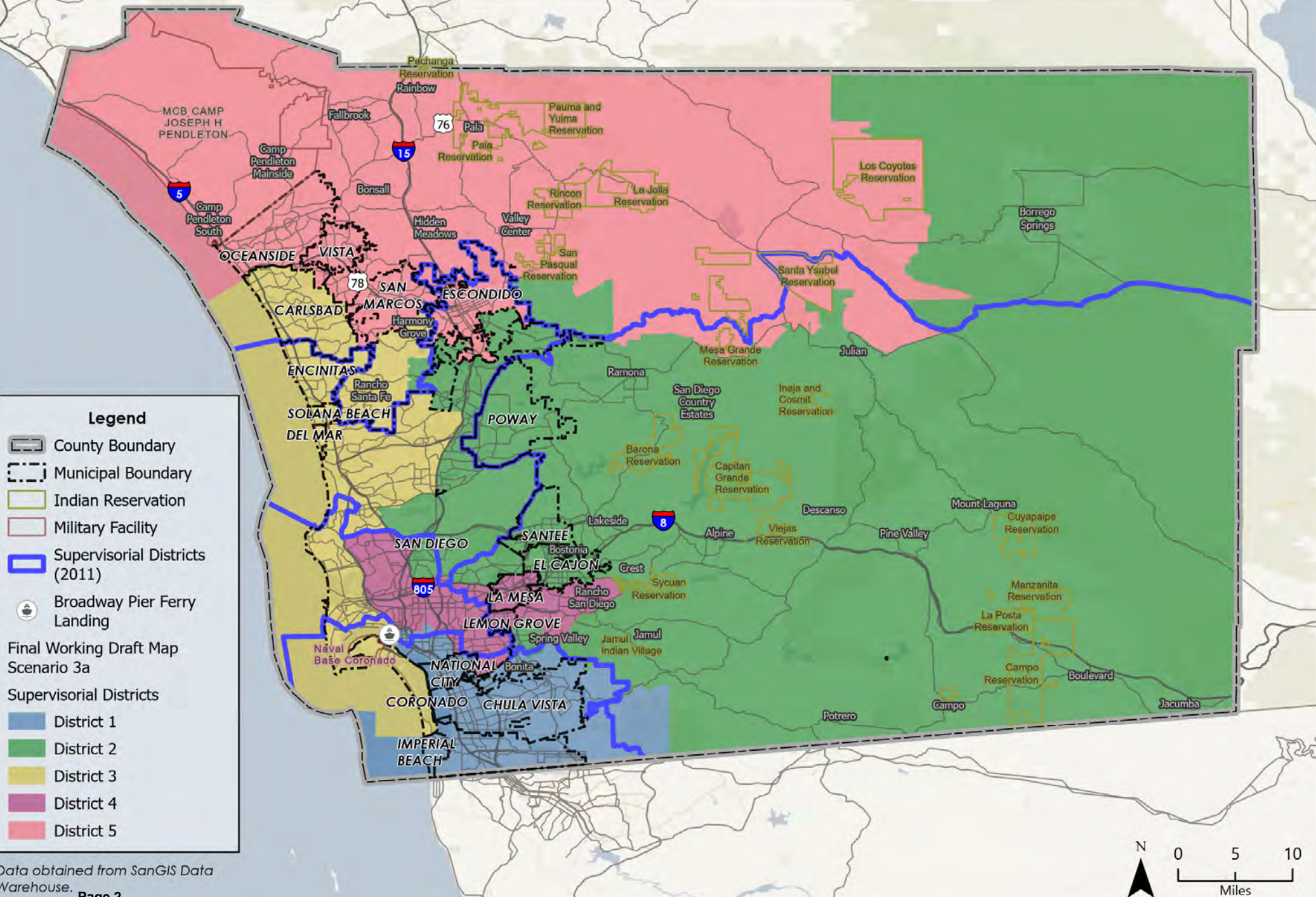
- Move El Cajon from District 4 to District 2
- Move Navajo including Allied Gardens and San Carlos from District 2 to District 4
- Move Tierrasanta and Kearny from District 2 to District 4
- May move Serra Mesa from District 2 to District 4 if necessary

Commissioner Ponds:

- Move Spring Valley, Paradise Hills, Casa de Oro/Mt Helix and Rancho San Diego to District 4
- Move El Cajon to District 2
- **Not a valid map due to discontinuity of District 2 and overall deviation greater than 10.0% -- see Final Working Draft Map Scenario 3b**

COUNTY OF SAN DIEGO SUPERVISORIAL DISTRICTS FINAL WORKING DRAFT MAP SCENARIO 3A - 12/9/2021 MEETING

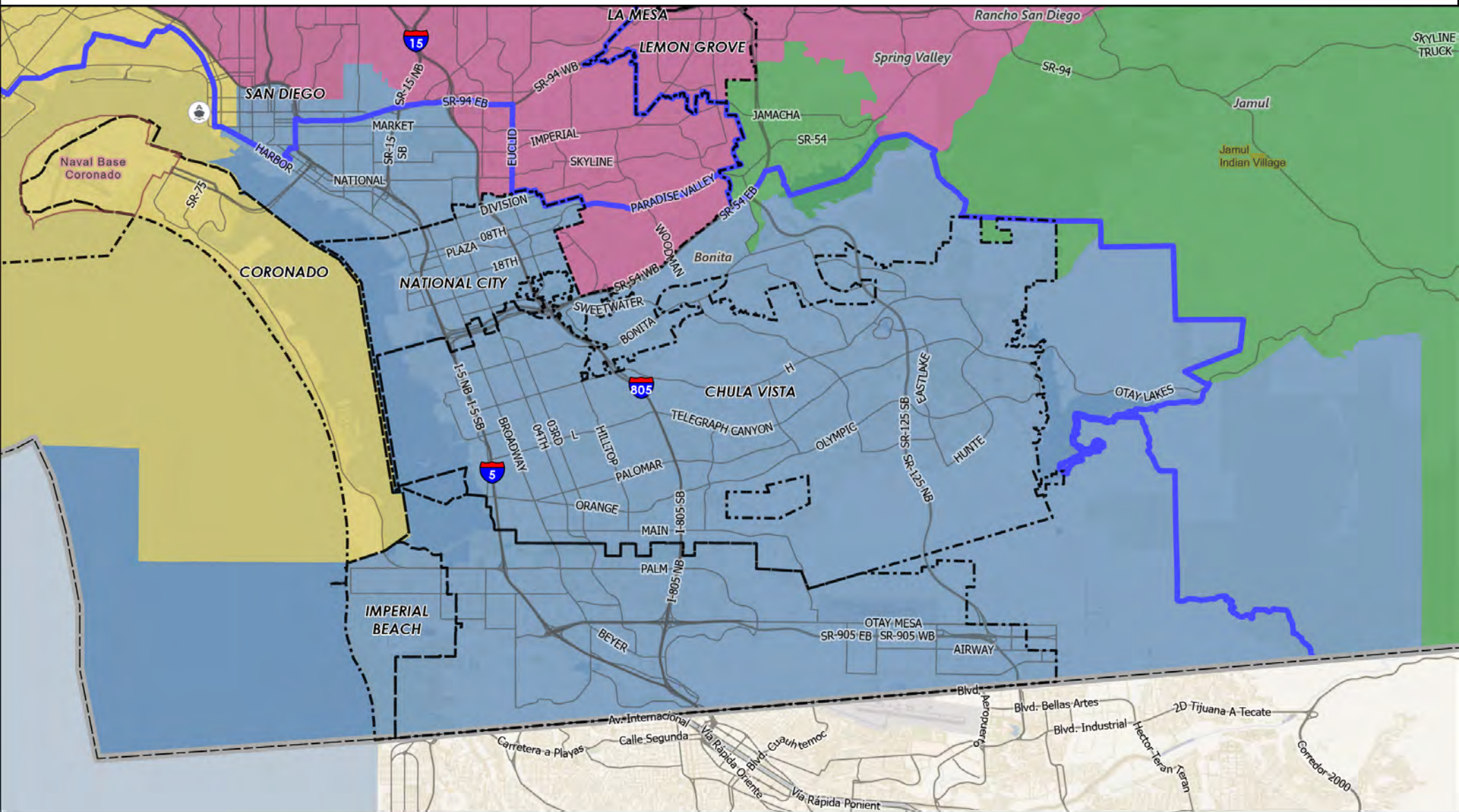
COUNTY OF SAN DIEGO
INDEPENDENT
REDISTRICTING
COMMISSION



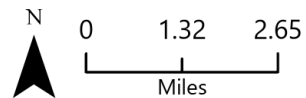
COUNTY OF SAN DIEGO

SUPERVISORIAL DISTRICTS - FINAL WORKING DRAFT MAP SCENARIO 3A

12/9/2021 MEETING - DISTRICT 1



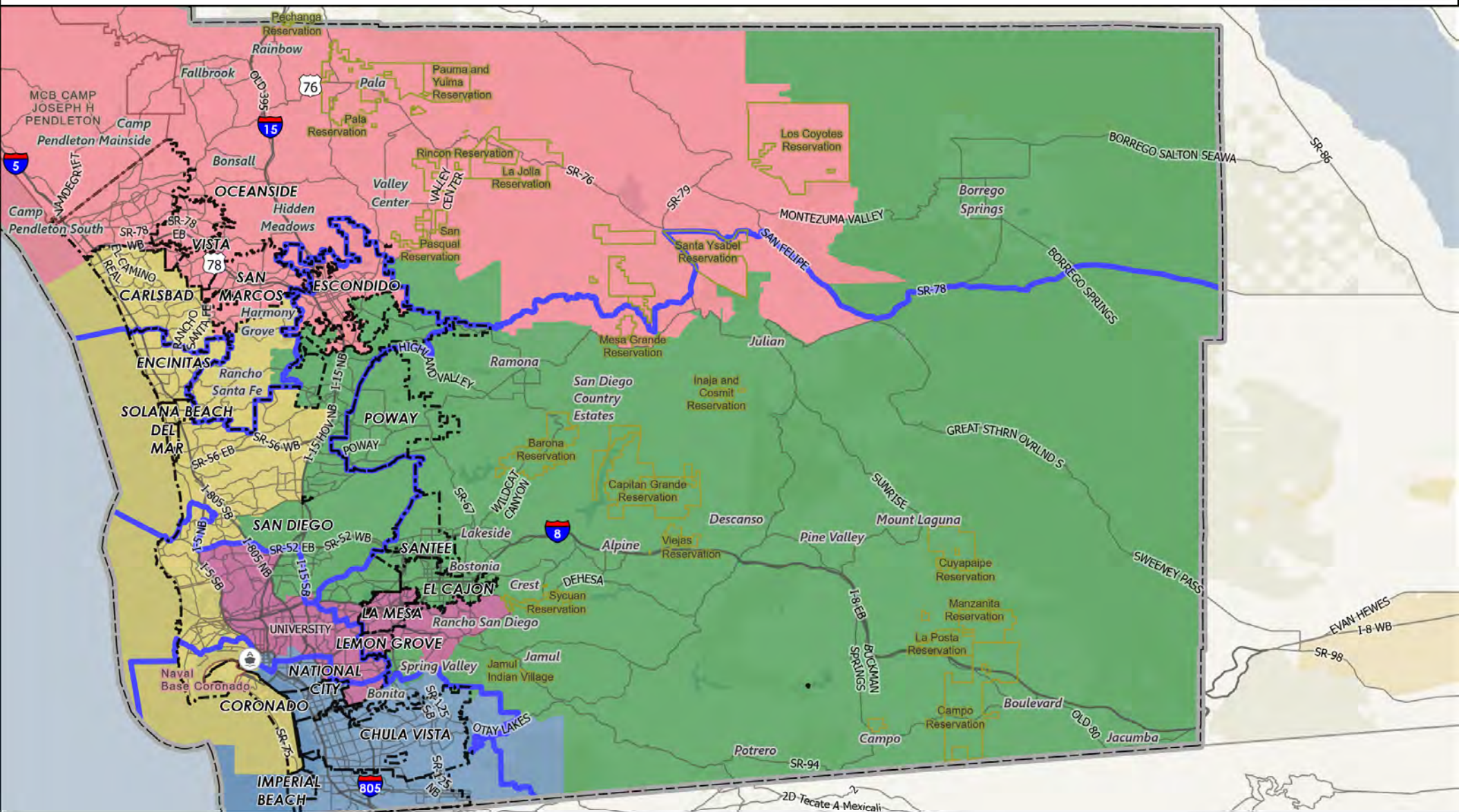
- | | |
|------------------------------|-------------------------------------|
| County Boundary | Final Working Draft Map Scenario 3a |
| Municipal Boundary | Supervisory Districts |
| Indian Reservation | District 1 |
| Military Facility | District 2 |
| Supervisory Districts (2011) | District 3 |
| Broadway Pier Ferry Landing | District 4 |
| | District 5 |



COUNTY OF SAN DIEGO

SUPERVISORIAL DISTRICTS - FINAL WORKING DRAFT MAP SCENARIO 3A

12/9/2021 MEETING - DISTRICT 2



- County Boundary
- Municipal Boundary
- Indian Reservation
- Military Facility
- Supervisory Districts (2011)
- Broadway Pier Ferry Landing

- Final Working Draft Map
Scenario 3a
- Supervisory Districts
- District 1
 - District 2
 - District 3
 - District 4
 - District 5





COUNTY OF SAN DIEGO
INDEPENDENT
REDISTRICTING
COMMISSION





COUNTY OF SAN DIEGO
INDEPENDENT
REDISTRICTING
COMMISSION



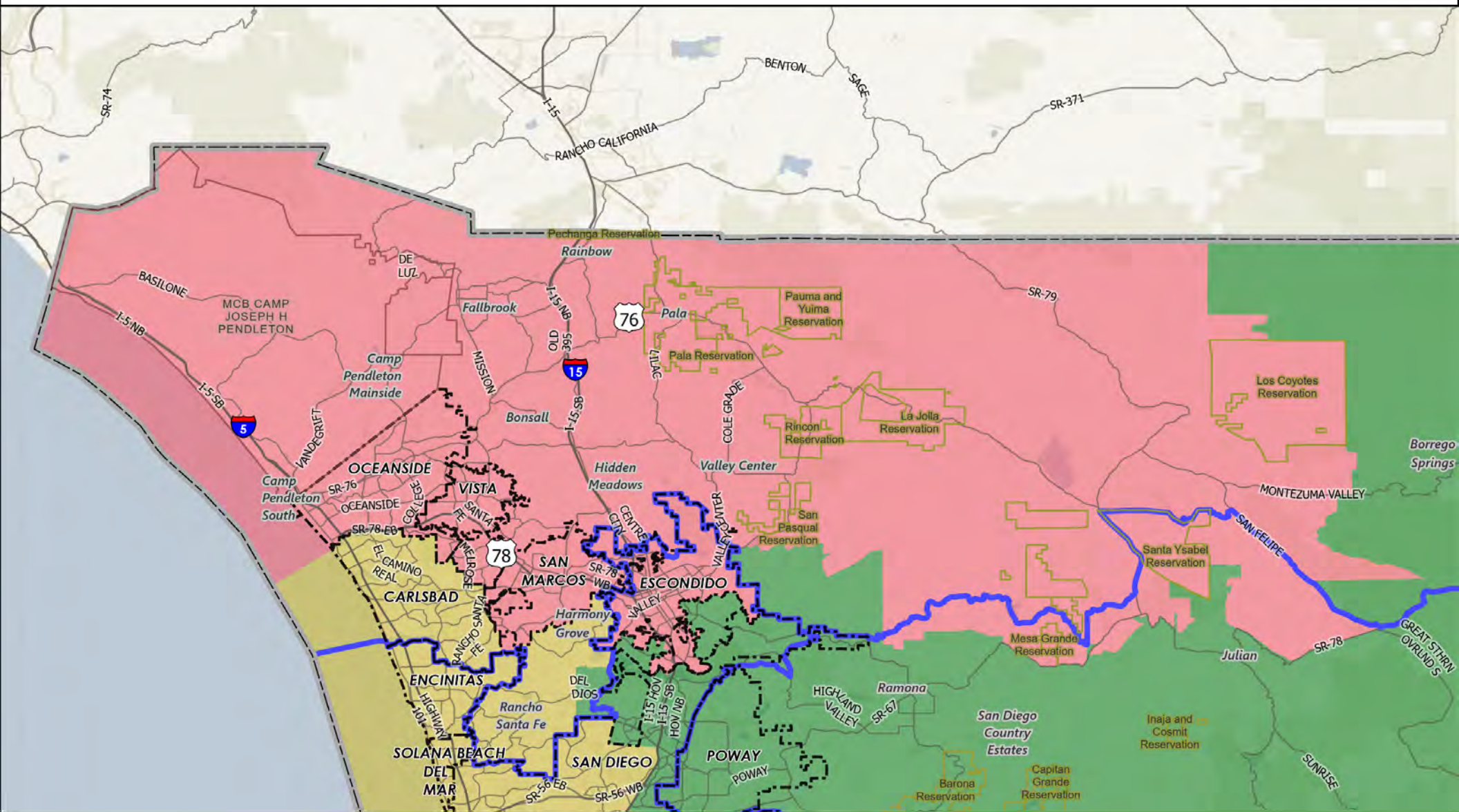
District 4

Miles

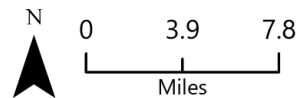
COUNTY OF SAN DIEGO

SUPERVISORIAL DISTRICTS - FINAL WORKING DRAFT MAP SCENARIO 3A

12/9/2021 MEETING - DISTRICT 5



- | | |
|------------------------------|-------------------------------------|
| County Boundary | Final Working Draft Map Scenario 3a |
| Municipal Boundary | Supervisory Districts |
| Indian Reservation | District 1 |
| Military Facility | District 2 |
| Supervisory Districts (2011) | District 3 |
| Broadway Pier Ferry Landing | District 4 |
| | District 5 |



Equal Population Criterion

Ideal Population		660,452
Overall Deviation		12.8%
< 5.0%	5.0 - 10.0%	> 10.0%

California Statewide Database Adjusted
(incarcerated persons reallocation) 2020
Census P.L. 94-171 Redistricting Data
Summary Files - Total Population.

Total Population & Deviation per District

District ID	Total Population	Over / Under Ideal	Deviation From Ideal
1	601,198	-59,254	-9.0%
2	675,888	15,436	2.3%
3	663,790	3,338	0.5%
4	675,798	15,346	2.3%
5	685,588	25,136	3.8%

Total Population by Race/Ethnicity per District

District ID	White	Black or African American	American Indian or Alaska Native	Asian	Native Hawaiian and Pacific Islander	Some Other Race	Two or More Races	Hispanic/Latino
1	16.9%	5.0%	0.2%	11.7%	0.4%	0.4%	3.4%	62.0%
2	55.4%	3.8%	0.5%	10.5%	0.4%	0.6%	6.1%	22.7%
3	58.7%	1.8%	0.2%	18.9%	0.2%	0.6%	6.0%	13.5%
4	38.6%	8.7%	0.3%	13.0%	0.5%	0.6%	5.1%	33.2%
5	43.2%	2.8%	0.7%	6.7%	0.6%	0.5%	4.6%	41.0%

California Statewide Database (CA SWDB) Adjusted 2020 Census P.L. 94-171 Redistricting Data - Total Population by Race and Hispanic/Latino origin.

VAP by Race/Ethnicity per District

District	White	Black or African American	American Indian or Alaska Native	Asian	Native Hawaiian and Pacific Islander	Some Other Race	Two or More Races	Hispanic/Latino
1	19.4%	5.3%	0.3%	12.5%	0.4%	0.4%	2.9%	58.8%
2	58.8%	3.8%	0.5%	10.7%	0.4%	0.6%	4.8%	20.4%
3	61.0%	1.9%	0.2%	19.0%	0.2%	0.6%	4.7%	12.4%
4	42.0%	8.4%	0.3%	13.8%	0.5%	0.6%	4.4%	30.0%
5	47.3%	3.0%	0.7%	7.3%	0.6%	0.5%	3.9%	36.8%

CA SWDB Adjusted 2020 Census P.L. 94-171 Redistricting Data - Voting-age Population (VAP) by Race and Hispanic/Latino origin.

CVAP by Race/Ethnicity per District

District ID	White	Black or African American	American Indian or Alaska Native	Asian	Native Hawaiian and Pacific Islander	Two or More Races	Hispanic/Latino
1	24.4%	6.5%	0.2%	13.0%	0.6%	2.0%	53.2%
2	66.8%	3.9%	0.5%	8.6%	0.3%	2.9%	16.8%
3	68.8%	2.2%	0.2%	14.3%	0.3%	2.8%	11.1%
4	48.6%	10.2%	0.2%	12.0%	0.5%	3.1%	25.3%
5	56.3%	3.7%	0.9%	6.2%	0.4%	2.6%	29.7%

CA SWDB Adjusted 2015-2019 American Community Survey Citizen Voting-age Population (CVAP) by Race and Ethnicity Special Tabulation. Rounding may lead to summation of percentages not equal to 100% (+/- 1%).

Contiguity Criterion

Are all districts contiguous at more than a point or by bridge or by regular ferry service? **No**

If no, the following districts are discontinuous:

District 2

Compactness Criterion

Where it does not conflict with other mandatory criteria, districts are compact such that nearby areas of population are not bypassed for more distant areas of population: **Yes**

Criteria Specific to the County of San Diego

At least three districts shall include unincorporated territory.

Number of districts that include unincorporated territory: **5**

Districts that include unincorporated territory:

District 1, District 2, District 3, District 4, District 5

Two districts must be comprised of primarily unincorporated territory.

Number of districts that are primarily unincorporated territory: **2**

Districts that are primarily unincorporated territory:

District 2, District 5

Land Area Table

District	District Area (sq mi)	Unincorporated Area (sq mi)	Percent Unincorporated Area	Incorporated Area (sq mi)	Percent Incorporated Area
District 1	168	60	35.5%	108	64.5%
District 2	2,518	2,329	92.5%	188	7.5%

County of San Diego IRC

Final Working Draft Map Scenario 3a --Supervisory Districts Summary Statistics

12/9/2021



District	District Area (sq mi)	Unincorporated Area (sq mi)	Percent Unincorporated Area	Incorporated Area (sq mi)	Percent Incorporated Area
District 3	231	38	16.3%	194	83.7%
District 4	101	23	22.7%	78	77.3%
District 5	1,242	1,118	90.0%	124	10.0%

Preservation of Geographic Integrity Criteria (i.e., minimize division of cities, communities of interest, etc.)

COI Category	Total # of COIs	# of COIs Preserved in Minimum Districts	% of COIs Preserved in Minimum Districts	COIs Not Preserved in Minimum # of Districts
*Community Builder spatial-submitted COIs	28	10	36%	78 Cooridor, AAPI communities, BIPOC Immigrant & Refugee Communities, BIPOC Immigrant and Refugee, BIPOC, Immigrant & Refugee, Carlsbad and North County neighbors, Elfin Forest, Harmony Grove, Eden Valley - the united rural communities., Grossmont-Mt. Helix, I live in North Encanto but a lot of our resources as in La Mesa, Lemon Grove, or in the city., Inland North County, Lakeside and unincorporated areas within the existing District 2, Magic Back Country, North Coastal: includes the cities of Carlsbad, Encinitas, Solano Beach, and Del Mar along with the unincorporated communities of Fairbank Ranch and Rancho Santa Fe., North County San Diego Asian Diaspora, Ramona, South Bay, University City/La Jolla, Valley Center
Municipalities	18	17	94%	San Diego
Census Designated Places	39	39	100%	
Indian Reservations	19	18	95%	Sycuan Reservation
Military Installations	22	21	95%	Mcas Miramar
Community Plan Areas (City of San Diego)	57	52	91%	Downtown, Kearny Mesa, Military Facilities, Reserve, Serra Mesa
Community Plan Areas - Representative Planning and Sponsor Groups (Non-City of San Diego)	36	26	72%	County Islands, Crest - Dehesa, Jamul, Julian, North County Metro, Ramona, San Dieguito, Spring Valley, Sweetwater, Valle De Oro
Elementary School Districts	24	11	46%	Gen Elem Cajon Valley Union, Gen Elem Chula Vista, Gen Elem Dehesa, Gen Elem Encinitas Union, Gen Elem Escondido Union, Gen Elem Julian Union, Gen Elem La Mesa-spring Valley, Gen Elem Lemon Grove, Gen Elem National, Gen Elem Rancho Santa Fe, Gen Elem San Pasqual Union, Gen Elem South Bay Union, Gen Elem Spencer Valley
High School Districts	6	1	17%	High Escondido Union, High Grossmont Union, High Julian Union, High San Dieguito Union, High Sweetwater Union

County of San Diego IRC

Final Working Draft Map Scenario 3a --Supervisory Districts Summary Statistics

12/9/2021



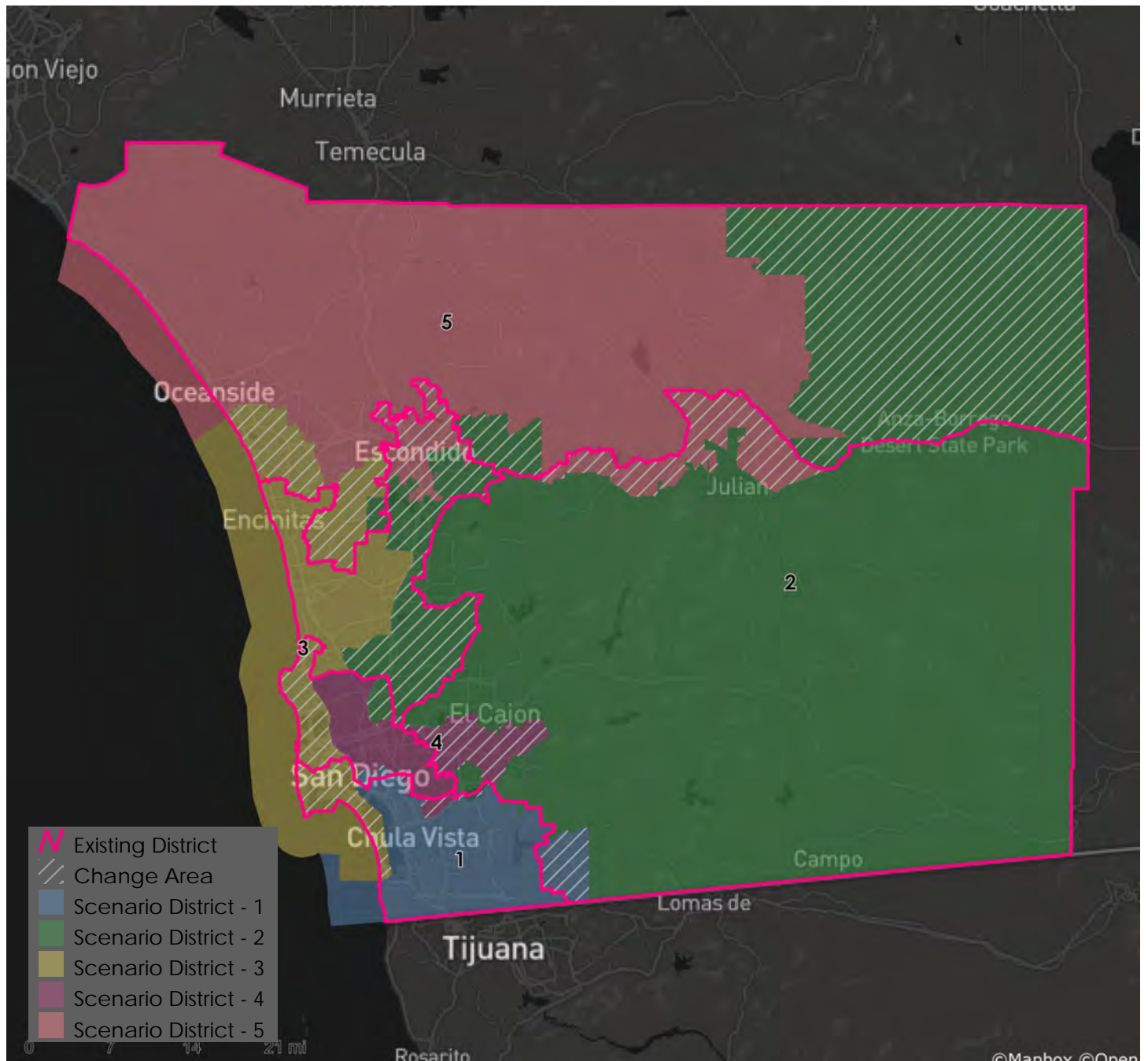
COI Category	Total # of COIs	# of COIs Preserved in Minimum Districts	% of COIs Preserved in Minimum Districts	COIs Not Preserved in Minimum # of Districts
Unified School Districts	15	5	33%	Unif Bond Poway-sfid 2002-1, Prop U 11/5/02, 2019ref, Unif Bond San Marcos Sfid #1-6/04/96, 2004-1 Ref, Unified Carlsbad, Unified Oceanside, Unified Poway, Unified Ramona, Unified San Diego, Unified Valley Center-pauma, Unified Vista, Unified Warner
Fire Districts	13	8	62%	Bonita-sunnyside Fire Protection District, Rancho Santa Fe Fire Protection Dist. Of Sd County, San Marcos Fire Protection District, San Miguel Consol. Fire Protection District, Valley Center Fire Protection District
Public Utility Districts	2	2	100%	
Sanitation Districts	4	3	75%	San Diego County Sanitation District L&I
Water Districts	50	40	80%	Helix Water District Land, Olivenhain Municipal Water District, Otay Water District, Rincon Del Diablo Muni Id.E (Formerly F&G), Rincon Del Diablo Muni Water Imp Dist A, Rincon Del Diablo Municipal Water District, South Bay Irrigation Land, Vallecitos Water District, Vallecitos Water Imp Dist No 6 - Sewer Service, Valley Center Municipal Water District

*Many Community Builder spatial depictions (polygons) of COIs are general, represent multiple COIs, or represent a single proposed supervisory district; therefore not all polygons can be maintained undivided, even when the intent of the COI is respected. The category, COIs Not Preserved in Minimum # of Districts includes any polygon divided even minimally by a district boundary; the name of the COI (last column) is that provided by the submitter.

County of San Diego IRC

Final Working Draft Map Scenario 3a --Supervisory Districts Summary Statistics

12/9/2021



Metadata

Run Date/Time: 2021-12-10 12:38:39
Workflow Directory: C:\Users\abrasch\Desktop\F2089_San_Diego_County\Projects\Alteryx\
Feature Class: File: gdb:C:\Users\abrasch\Desktop\F2089_San_Diego_County\Data\Redist.gdb\Blocks_2020_02
Scenario: Districts_PostFWDM_3a