



**County of San Diego
Independent Redistricting Commission**

Regular Meeting

Thursday, December 9, 2021, at 5:30 pm

Continued to Saturday, December 11, 2021, at 10:00 am

ON MOTION of Commissioner Inman seconded by Commissioner Ponds, the Commission approved to amend the Final Working Draft Map to include the changes reflected in Final Working Draft Map Scenario 3b, including everything in the Desert and Borrego Springs Community Plan Areas, and to include the Guejito area and to include the Valley Center Fire District into District 5.

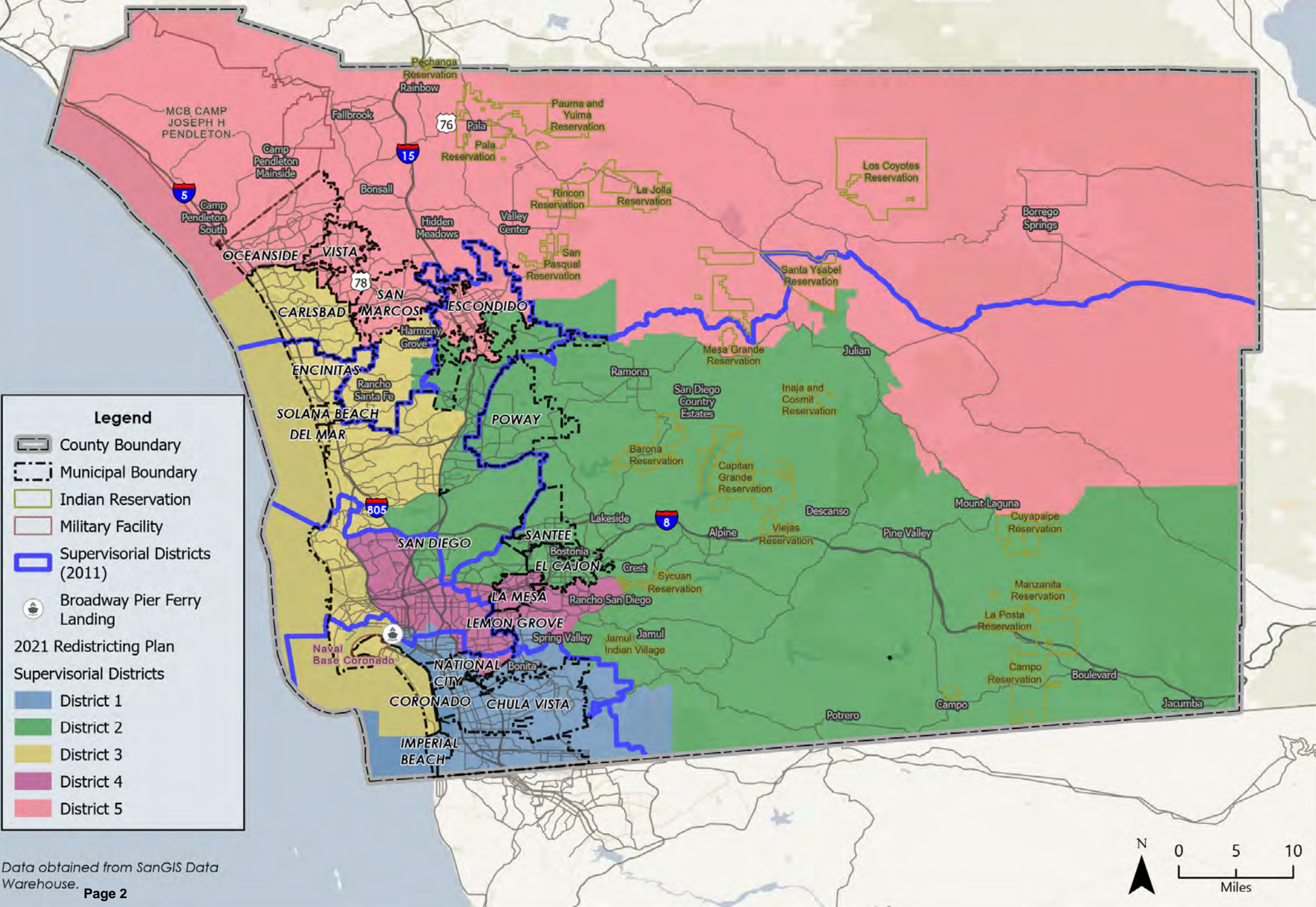
Special Meeting

Saturday, December 11, 2021, at 2:00 pm

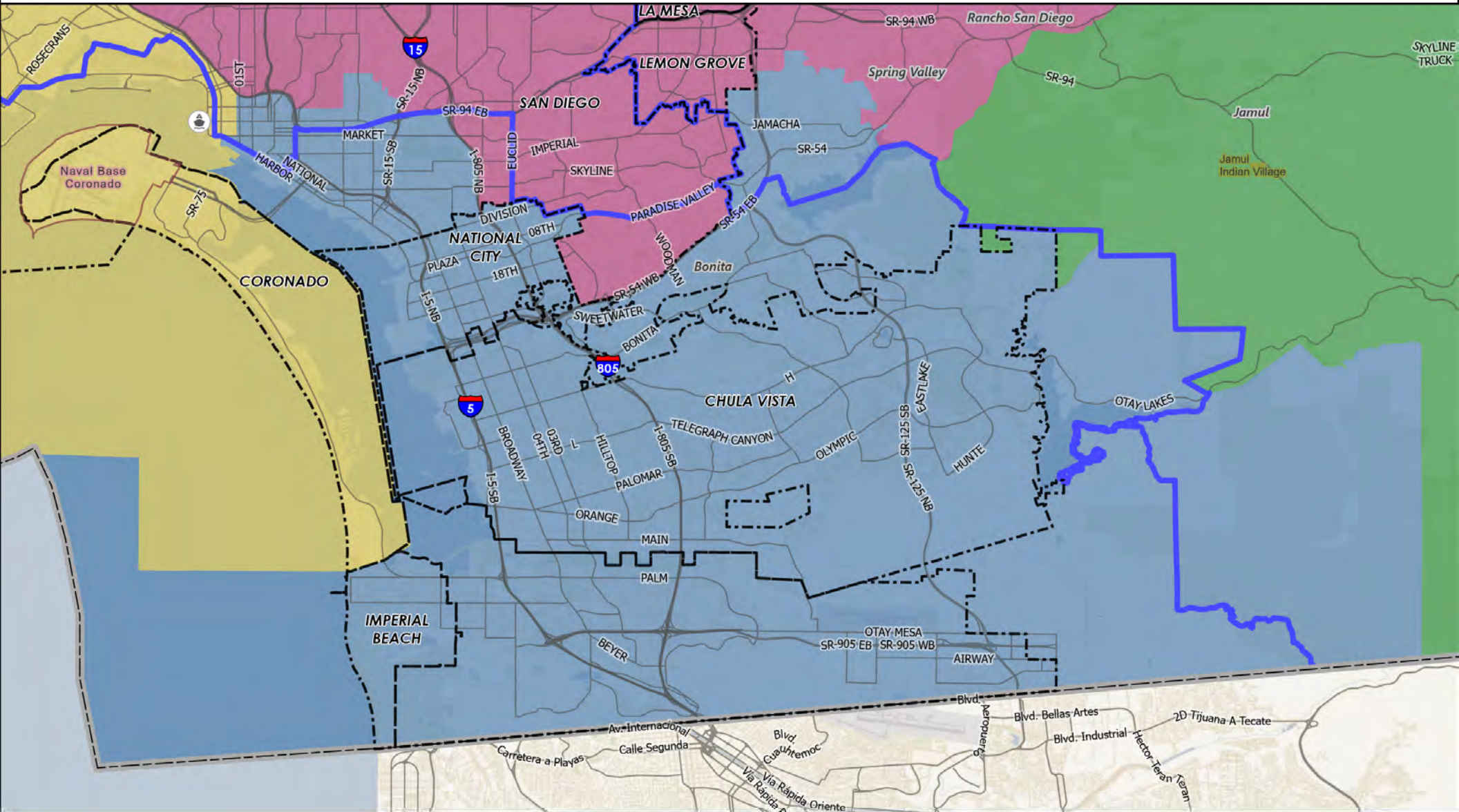
ON MOTION of Commissioner Inman and seconded by Commissioner Russ, the Commission approved the Final Working Draft Map Scenario 3b as amended, and further amending to maintain the Mountain Empire Community Plan area.

2021 REDISTRICTING PLAN FOR THE COUNTY OF SAN DIEGO BOARD OF SUPERVISORS

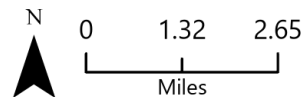
COUNTY OF SAN DIEGO
INDEPENDENT
REDISTRICTING
COMMISSION



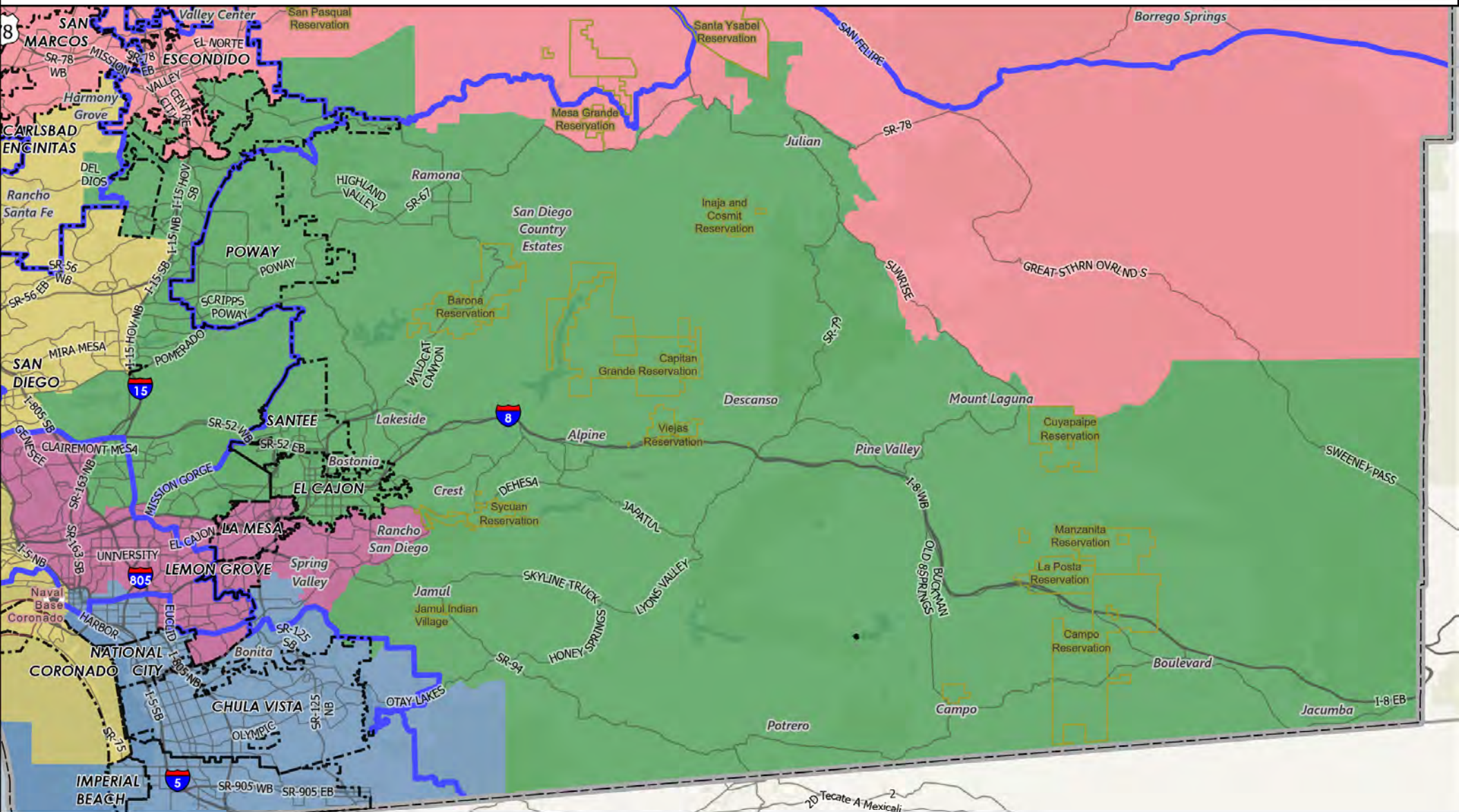
2021 REDISTRICTING PLAN FOR THE COUNTY OF SAN DIEGO BOARD OF SUPERVISORS SUPERVISORIAL DISTRICT 1



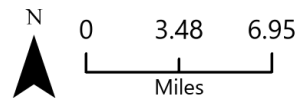
- | | |
|--------------------------------|-------------------------|
| County Boundary | 2021 Redistricting Plan |
| Municipal Boundary | Supervisorial Districts |
| Indian Reservation | District 1 |
| Military Facility | District 2 |
| Supervisorial Districts (2011) | District 3 |
| Broadway Pier Ferry Landing | District 4 |
| | District 5 |



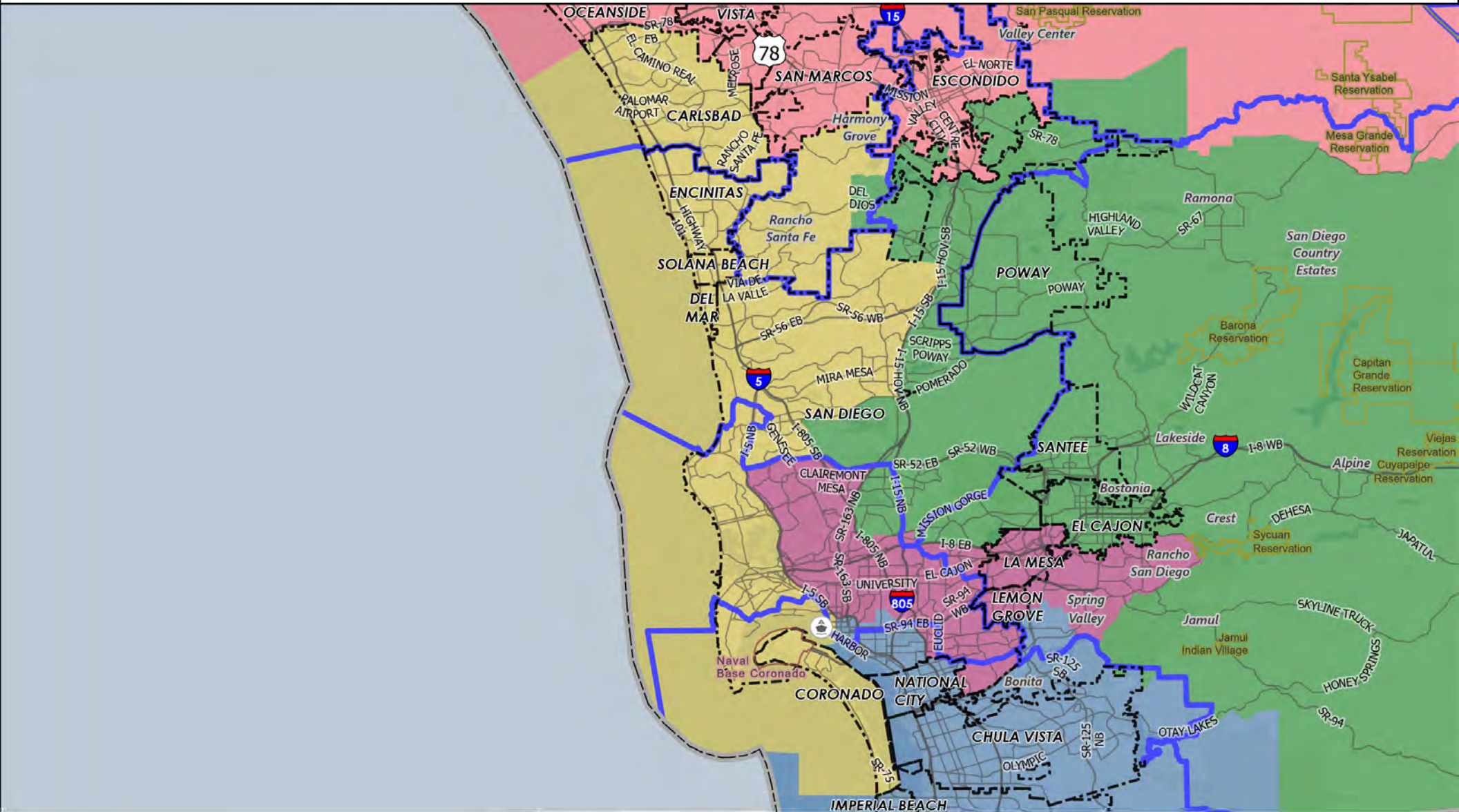
2021 REDISTRICTING PLAN FOR THE COUNTY OF SAN DIEGO BOARD OF SUPERVISORS SUPERVISORAL DISTRICT 2



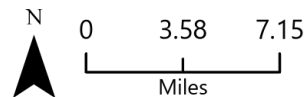
- | | |
|--------------------------------|-------------------------|
| County Boundary | 2021 Redistricting Plan |
| Municipal Boundary | Supervisorial Districts |
| Indian Reservation | District 1 |
| Military Facility | District 2 |
| Supervisorial Districts (2011) | District 3 |
| Broadway Pier Ferry Landing | District 4 |
| | District 5 |



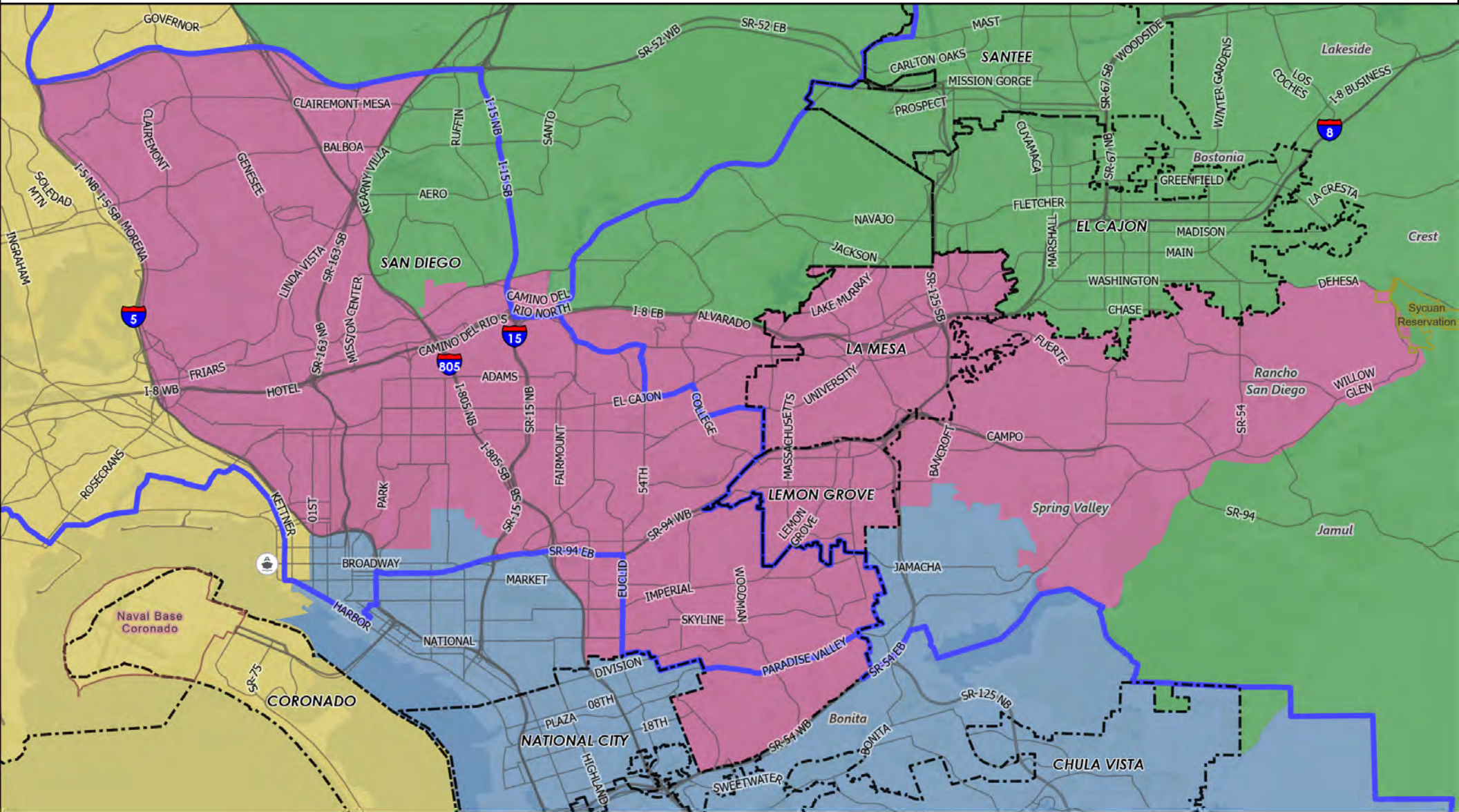
2021 REDISTRICTING PLAN FOR THE COUNTY OF SAN DIEGO BOARD OF SUPERVISORS SUPERVISORAL DISTRICT 3



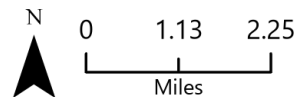
County Boundary	2021 Redistricting Plan
Municipal Boundary	Supervisorial Districts
Indian Reservation	District 1
Military Facility	District 2
Supervisorial Districts (2011)	District 3
Broadway Pier Ferry Landing	District 4
	District 5



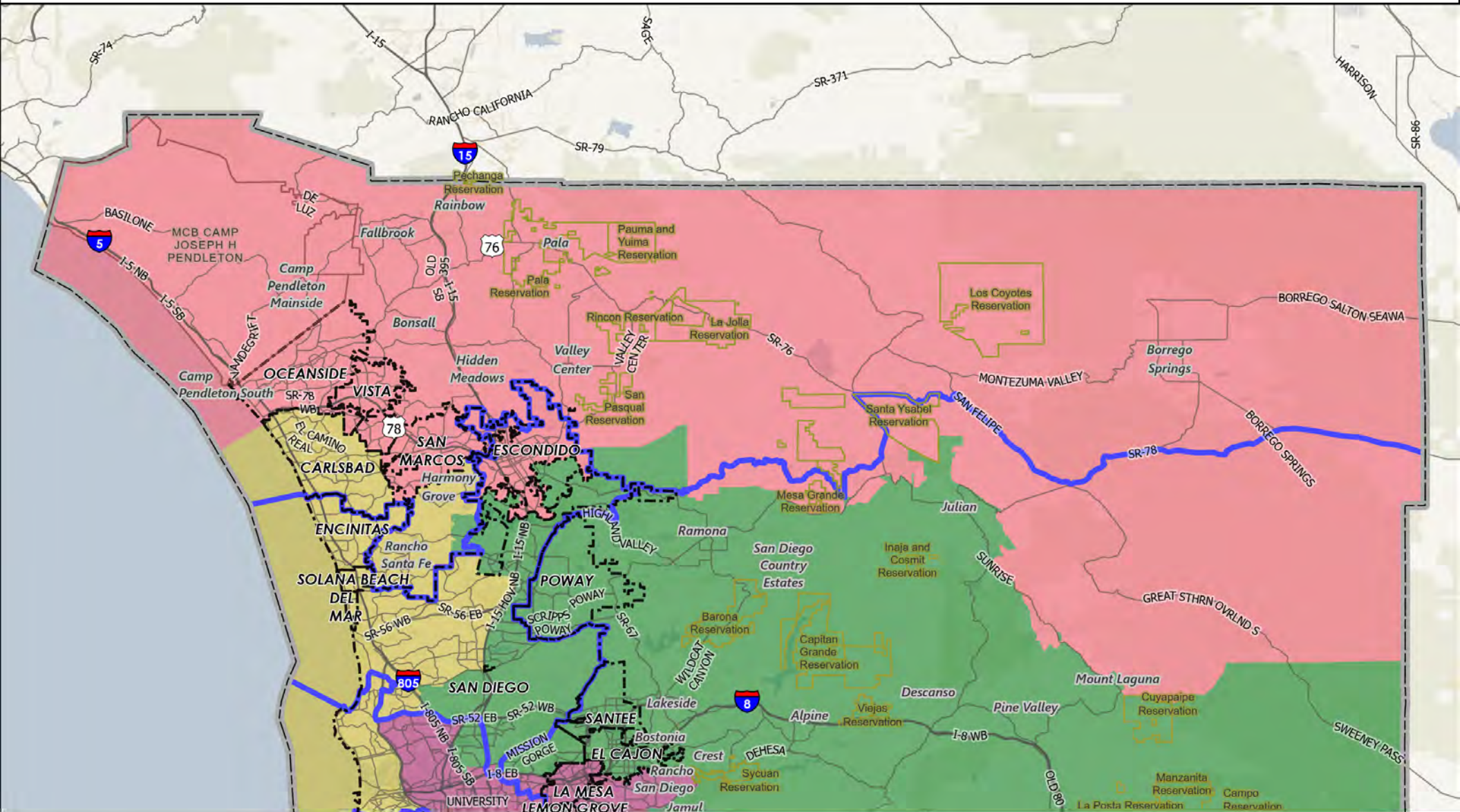
2021 REDISTRICTING PLAN FOR THE COUNTY OF SAN DIEGO BOARD OF SUPERVISORS SUPERVISORAL DISTRICT 4



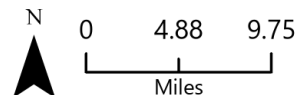
	County Boundary		2021 Redistricting Plan
	Municipal Boundary		Supervisorial Districts
	Indian Reservation		District 1
	Military Facility		District 2
	Supervisorial Districts (2011)		District 3
	Broadway Pier Ferry Landing		District 4
			District 5



2021 REDISTRICTING PLAN FOR THE COUNTY OF SAN DIEGO BOARD OF SUPERVISORS SUPERVISORIAL DISTRICT 5



- | | |
|--------------------------------|-------------------------|
| County Boundary | 2021 Redistricting Plan |
| Municipal Boundary | Supervisorial Districts |
| Indian Reservation | District 1 |
| Military Facility | District 2 |
| Supervisorial Districts (2011) | District 3 |
| Broadway Pier Ferry Landing | District 4 |
| | District 5 |



County of San Diego IRC

2021 Redistricting Plan for the County of San Diego Board of Supervisors

Supervisorial Districts Summary Statistics

12/11/2021



Equal Population Criterion

Ideal Population	660,452
Overall Deviation	8.1%

< 5.0% 5.0 - 10.0% > 10.0%

California Statewide Database Adjusted
(incarcerated persons reallocation) 2020
Census P.L. 94-171 Redistricting Data
Summary Files - Total Population.

Total Population & Deviation per District

District ID	Total Population	Over / Under Ideal	Deviation From Ideal
1	636,367	-24,085	-3.6%
2	636,285	-24,167	-3.7%
3	663,790	3,338	0.5%
4	675,829	15,377	2.3%
5	689,991	29,539	4.5%

Total Population by Race/Ethnicity per District

District ID	White	Black or African American	American Indian or Alaska Native	Asian	Native Hawaiian and Pacific Islander	Some Other Race	Two or More Races	Hispanic/Latino
1	17.2%	5.3%	0.2%	11.6%	0.4%	0.5%	3.4%	61.4%
2	57.2%	3.4%	0.6%	10.6%	0.3%	0.6%	6.1%	21.0%
3	58.7%	1.8%	0.2%	18.9%	0.2%	0.6%	6.0%	13.5%
4	38.6%	8.7%	0.3%	13.0%	0.5%	0.6%	5.1%	33.2%
5	43.3%	2.8%	0.7%	6.7%	0.5%	0.5%	4.6%	40.9%

California Statewide Database (CA SWDB) Adjusted 2020 Census P.L. 94-171 Redistricting Data - Total Population by Race and Hispanic/Latino origin.

VAP by Race/Ethnicity per District

District	White	Black or African American	American Indian or Alaska Native	Asian	Native Hawaiian and Pacific Islander	Some Other Race	Two or More Races	Hispanic/Latino
1	19.7%	5.6%	0.3%	12.5%	0.4%	0.4%	3.0%	58.2%
2	60.7%	3.4%	0.5%	10.8%	0.4%	0.6%	4.9%	18.8%
3	61.0%	1.9%	0.2%	19.0%	0.2%	0.6%	4.7%	12.4%
4	42.0%	8.4%	0.3%	13.8%	0.5%	0.6%	4.4%	30.0%
5	47.4%	3.0%	0.7%	7.2%	0.6%	0.5%	3.9%	36.8%

CA SWDB Adjusted 2020 Census P.L. 94-171 Redistricting Data - Voting-age Population (VAP) by Race and Hispanic/Latino origin.

CVAP by Race/Ethnicity per District

District ID	White	Black or African American	American Indian or Alaska Native	Asian	Native Hawaiian and Pacific Islander	Two or More Races	Hispanic/Latino
1	24.8%	6.9%	0.2%	12.9%	0.6%	2.1%	52.5%
2	68.8%	3.4%	0.5%	8.5%	0.3%	2.9%	15.4%
3	68.8%	2.2%	0.2%	14.3%	0.3%	2.8%	11.1%
4	48.6%	10.2%	0.2%	12.0%	0.5%	3.1%	25.3%
5	56.4%	3.7%	0.9%	6.2%	0.4%	2.6%	29.6%

CA SWDB Adjusted 2015-2019 American Community Survey Citizen Voting-age Population (CVAP) by Race and Ethnicity Special Tabulation. Rounding may lead to summation of percentages not equal to 100% (+/- 1%).

Contiguity Criterion

Are all districts contiguous at more than a point or by bridge or by regular ferry service? **Yes**

Compactness Criterion

Where it does not conflict with other mandatory criteria, districts are compact such that nearby areas of population are not bypassed for more distant areas of population: **Yes**

Criteria Specific to the County of San Diego

At least three districts shall include unincorporated territory.

Number of districts that include unincorporated territory: **5**

Districts that include unincorporated territory:

District 1, District 2, District 3, District 4, District 5

Two districts must be comprised of primarily unincorporated territory.

Number of districts that are primarily unincorporated territory: **2**

Districts that are primarily unincorporated territory:

District 2, District 5

Land Area Table

District	District Area (sq mi)	Unincorporated Area (sq mi)	Percent Unincorporated Area	Incorporated Area (sq mi)	Percent Incorporated Area
District 1	175	66	38.0%	108	62.0%
District 2	1,567	1,379	88.0%	188	12.0%
District 3	231	38	16.3%	194	83.7%
District 4	101	23	22.7%	78	77.3%
District 5	2,186	2,062	94.3%	124	5.7%

Preservation of Geographic Integrity Criteria (i.e., minimize division of cities, communities of interest, etc.)

COI Category	Total # of COIs	# of COIs Preserved in Minimum Districts	% of COIs Preserved in Minimum Districts	COIs Not Preserved in Minimum # of Districts
*Community Builder spatial-submitted COIs	28	8	29%	78 Cooridor, AAPI communities, BIPOC Immigrant & Refugee Communities, BIPOC Immigrant and Refugee, BIPOC, Immigrant & Refugee, Carlsbad and North County neighbors, Elfin Forest, Harmony Grove, Eden Valley - the united rural communities., Grossmont-Mt. Helix, I live in North Encanto but a lot of our resources as in La Mesa, Lemon Grove, or in the city., Inland North County, Lakeside and unincorporated areas within the existing District 2, Magic Back Country, North Coastal: includes the cities of Carlsbad, Encinitas, Solano Beach, and Del Mar along with the unincorporated communities of Fairbank Ranch and Rancho Santa Fe., North County, North County San Diego Asian Diaspora, Ramona, South Bay, University City/La Jolla
Municipalities	18	17	94%	San Diego
Census Designated Places	39	39	100%	
Indian Reservations	19	18	95%	Sycuan Reservation
Military Installations	22	21	95%	Mcas Miramar
Community Plan Areas (City of San Diego)	57	52	91%	Downtown, Kearny Mesa, Military Facilities, Reserve, Serra Mesa
Community Plan Areas - Representative Planning and Sponsor Groups (Non-City of San Diego)	36	26	72%	County Islands, Crest - Dehesa, Desert, Jamul, Julian, North County Metro, Ramona, San Dieguito, Spring Valley, Valle De Oro
Elementary School Districts	23	11	48%	Gen Elem Cajon Valley Union, Gen Elem Chula Vista, Gen Elem Dehesa, Gen Elem Encinitas Union, Gen Elem Escondido Union, Gen Elem Julian Union, Gen Elem La Mesa-spring Valley, Gen Elem National, Gen Elem Rancho Santa Fe, Gen Elem San Pasqual Union, Gen Elem South Bay Union, Gen Elem Spencer Valley
High School Districts	6	1	17%	High Escondido Union, High Grossmont Union, High Julian Union, High San Dieguito Union, High Sweetwater Union

County of San Diego IRC

2021 Redistricting Plan for the County of San Diego Board of Supervisors

Supervisory Districts Summary Statistics

12/11/2021



COI Category	Total # of COIs	# of COIs Preserved in Minimum Districts	% of COIs Preserved in Minimum Districts	COIs Not Preserved in Minimum # of Districts
Unified School Districts	13	4	31%	Unified Carlsbad, Unified Mt Empire, Unified Oceanside, Unified Poway, Unified Ramona, Unified San Diego, Unified San Marcos, Unified Valley Center-pauma, Unified Vista
Fire Districts	13	10	77%	Rancho Santa Fe Fire Protection Dist. Of Sd County, San Marcos Fire Protection District, San Miguel Consol. Fire Protection District
Public Utility Districts	2	2	100%	
Sanitation Districts	4	3	75%	San Diego County Sanitation District L&I
Water Districts	50	41	82%	Helix Water District Land, Olivenhain Municipal Water District, Otay Water District, Rincon Del Diablo Muni Id.E (Formerly F&G), Rincon Del Diablo Muni Water Imp Dist A, Rincon Del Diablo Municipal Water District, South Bay Irrigation Land, Vallecitos Water District, Vallecitos Water Imp Dist No 6 - Sewer Service

All COI Categories, except for the Community Builder spatial-submitted COIs, are based on geographic information system data that is managed by the San Diego Geographic Information Source (SanGIS) and available from the SanGIS Regional Data Warehouse. The names of the COIs are unchanged from the SanGIS source data.

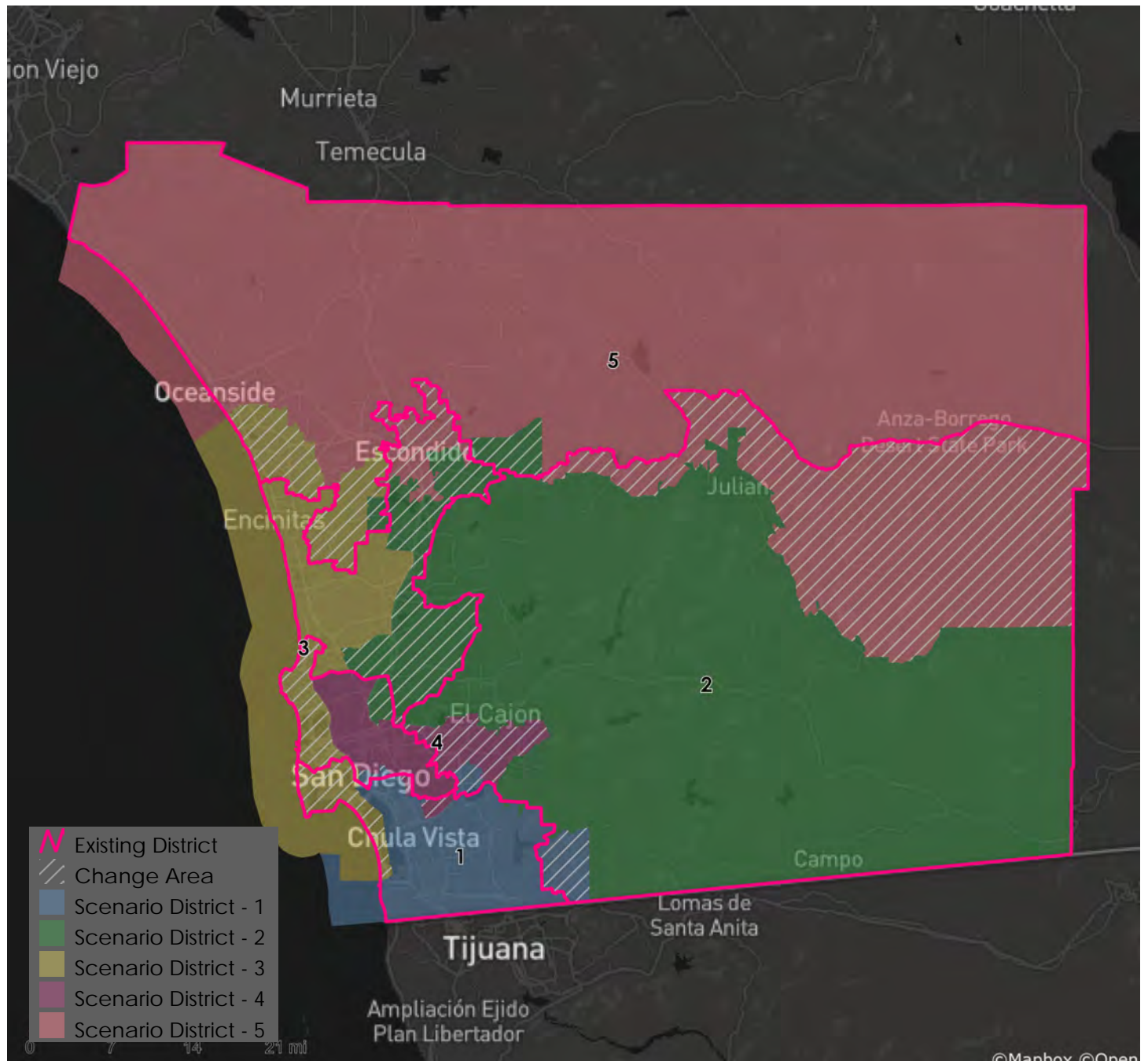
*Many Community Builder spatial depictions (polygons) of COIs are general, represent multiple COIs, or represent a single proposed supervisory district; therefore not all polygons can be maintained undivided, even when the intent of the COI is respected. The category, COIs Not Preserved in Minimum # of Districts includes any polygon divided even minimally by a district boundary; the name of the COI (last column) is that provided by the submitter.

County of San Diego IRC

2021 Redistricting Plan for the County of San Diego Board of Supervisors

Supervisorial Districts Summary Statistics

12/11/2021



Metadata

Run Date/Time: 2021-12-11 20:43:32
Workflow Directory: C:\Users\abrasch\Desktop\F2089_San_Diego_County\Projects\Alteryx\
Feature Class: File: gdb:C:\Users\abrasch\Desktop\F2089_San_Diego_County\Data\Redist.gdb\Blocks_2020_02
Scenario: Districts_2021_Redist_Plan