

Census Data & Redistricting Training

Part II: Census Data 102



County of San Diego Independent Redistricting Commission
Website: www.sandiegocounty.gov/redistricting



Data Schedule

- August 12, 2021 – Legacy file format
- September 20, 2021 – SWDB adjustments*

“An incarcerated person shall not be counted as part of a county’s population, except for an incarcerated person whose last known place of residence may be assigned to a census block in the county, if information about the last known place of residence for incarcerated persons is included in the computerized database for redistricting that is developed in accordance with subdivision (b) of Section 8253 of the Government Code, and that database is made publicly available.”

*Adjustment of the decennial census enumerations by the Statewide Database of California (SWDB)
AB-801 Elections Code sec. 21552 (a)(1)(C)



County of San Diego Independent Redistricting Commission
Website: www.sandiegocounty.gov/redistricting



Public Law 94-171 Redistricting Data Summary Files

U.S. Census Bureau Geography Program Glossary of Terms

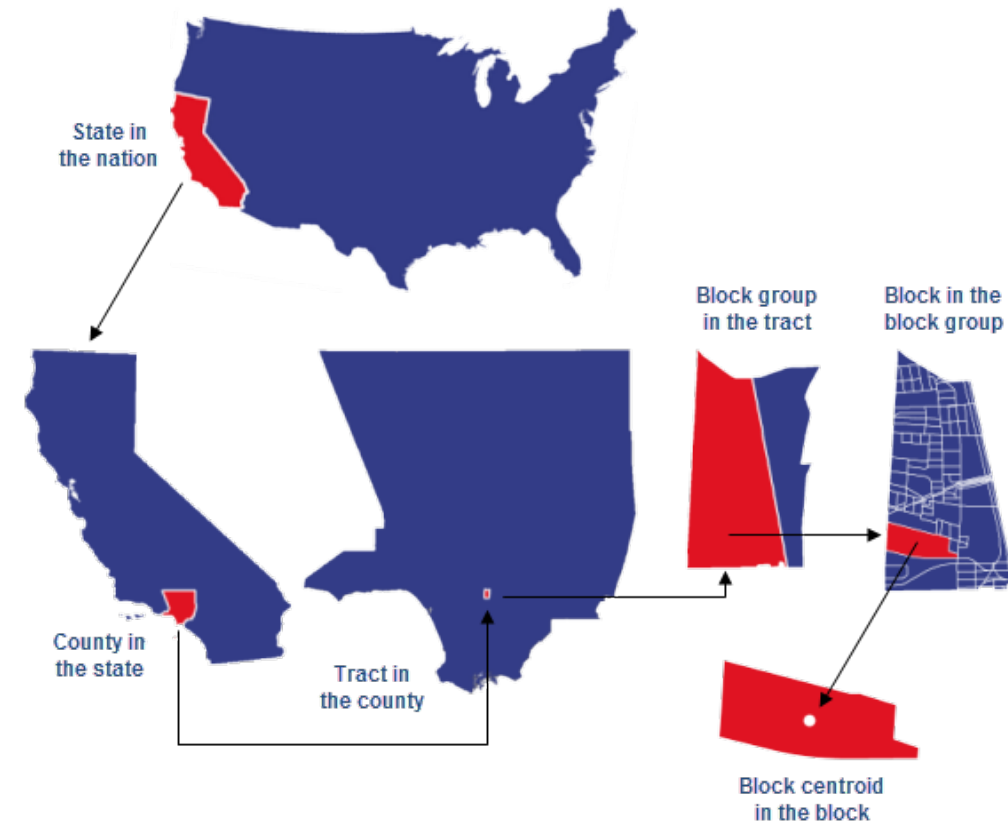
<https://www.census.gov/programs-surveys/geography/about/glossary.html>

Characteristics

- Population totals
- Population totals by race
- Population totals by race and Hispanic/Latino origin
- Voting-age population totals by race and Hispanic/Latino origin
- Population totals in group quarters by major group quarters type
- Housing unit counts
- Occupancy status for housing units

Geographies

- Census tracts
- Block groups
- Census blocks



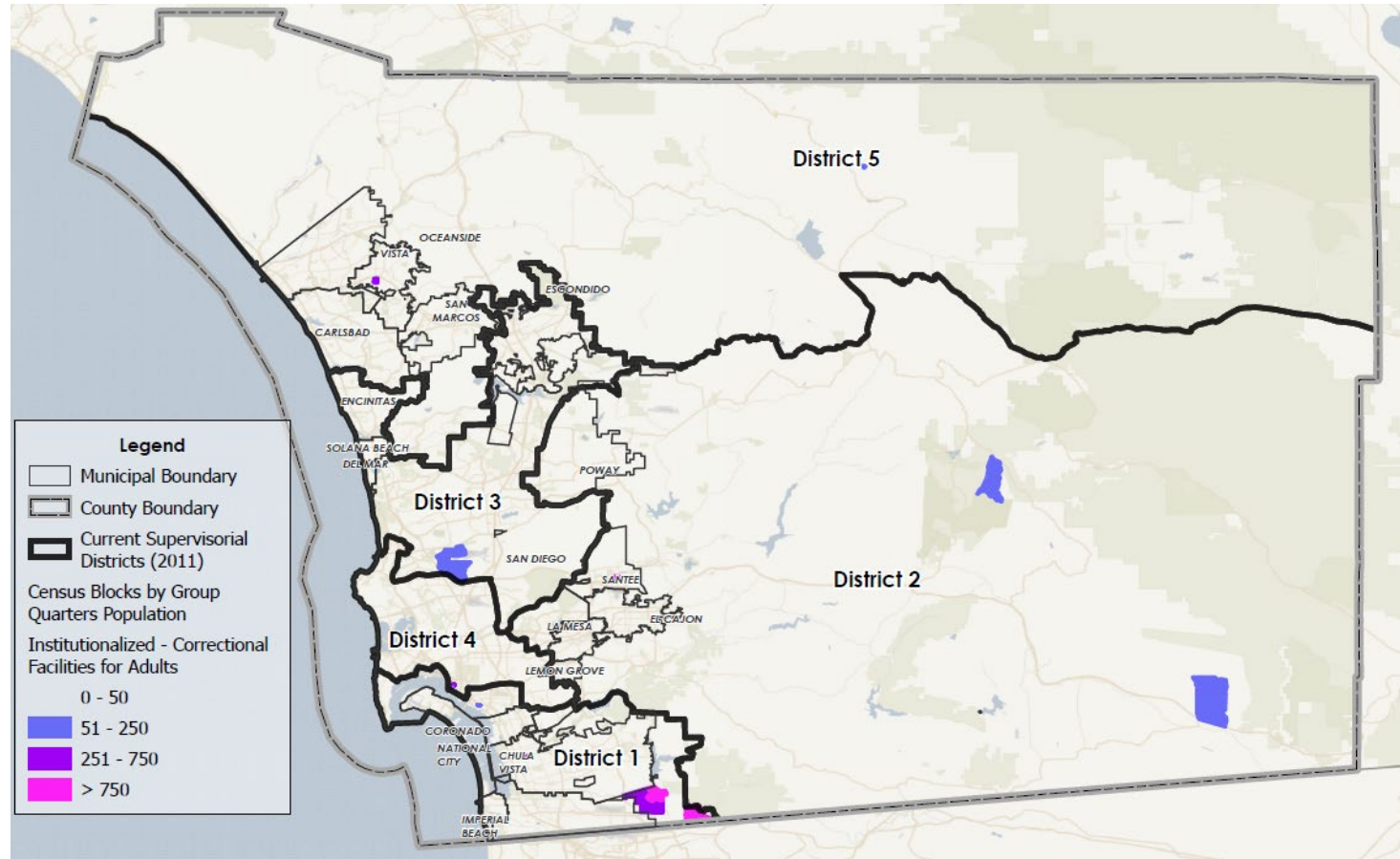
County of San Diego Independent Redistricting Commission
Website: www.sandiegocounty.gov/redistricting



Group Quarters Population

- Multiple sub-categories of the group quarters population including:
- Institutionalized population—Correctional facilities for adults

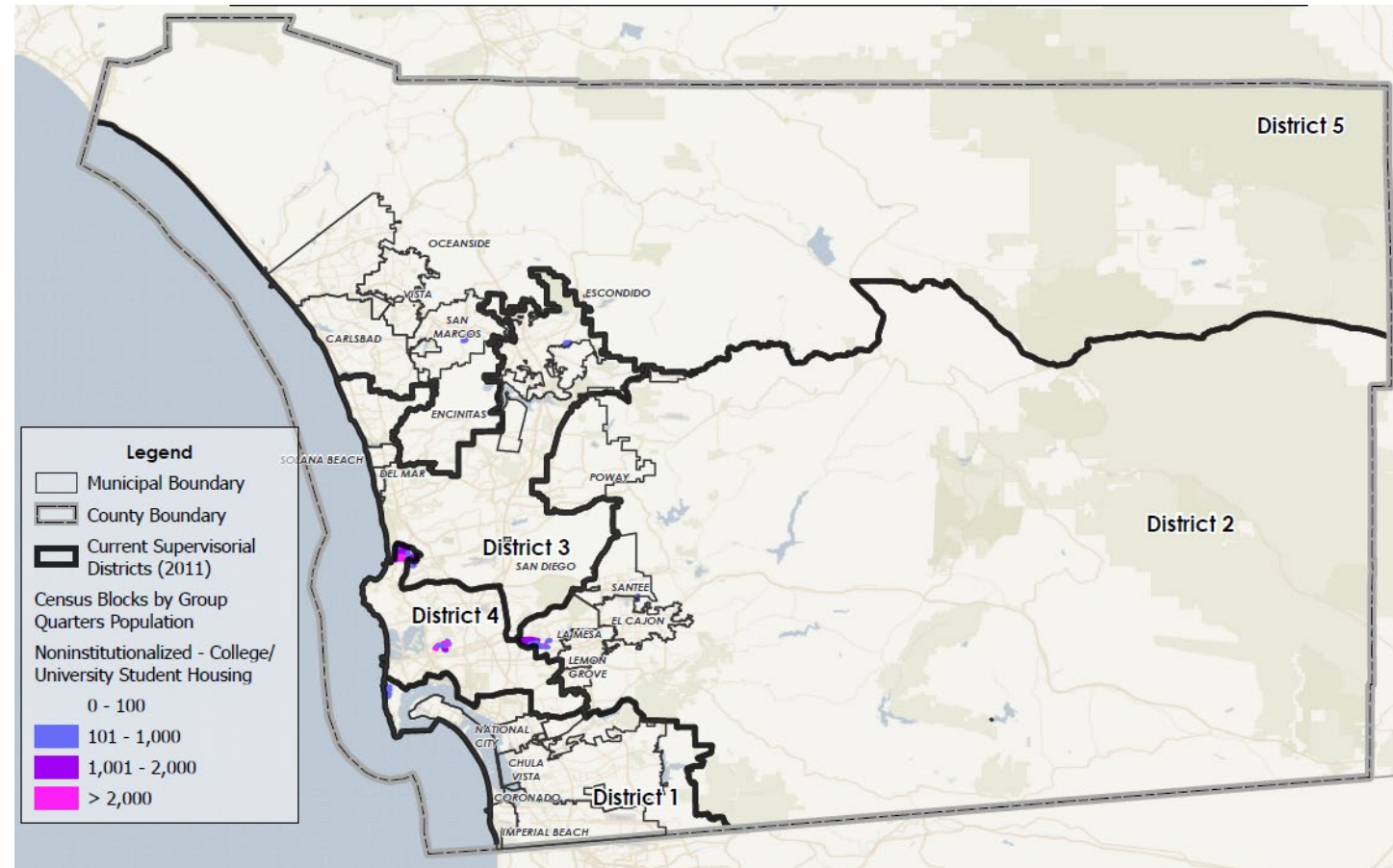
***The institutionalized GC population will be used only insofar as individuals in a state institution can be reallocated back to a Census block where that individual resided immediately before incarceration.



Group Quarters Population

- Multiple sub-categories of the group quarters population including:
- Institutionalized population—Correctional facilities for adults
- Noninstitutionalized population—College/University student housing

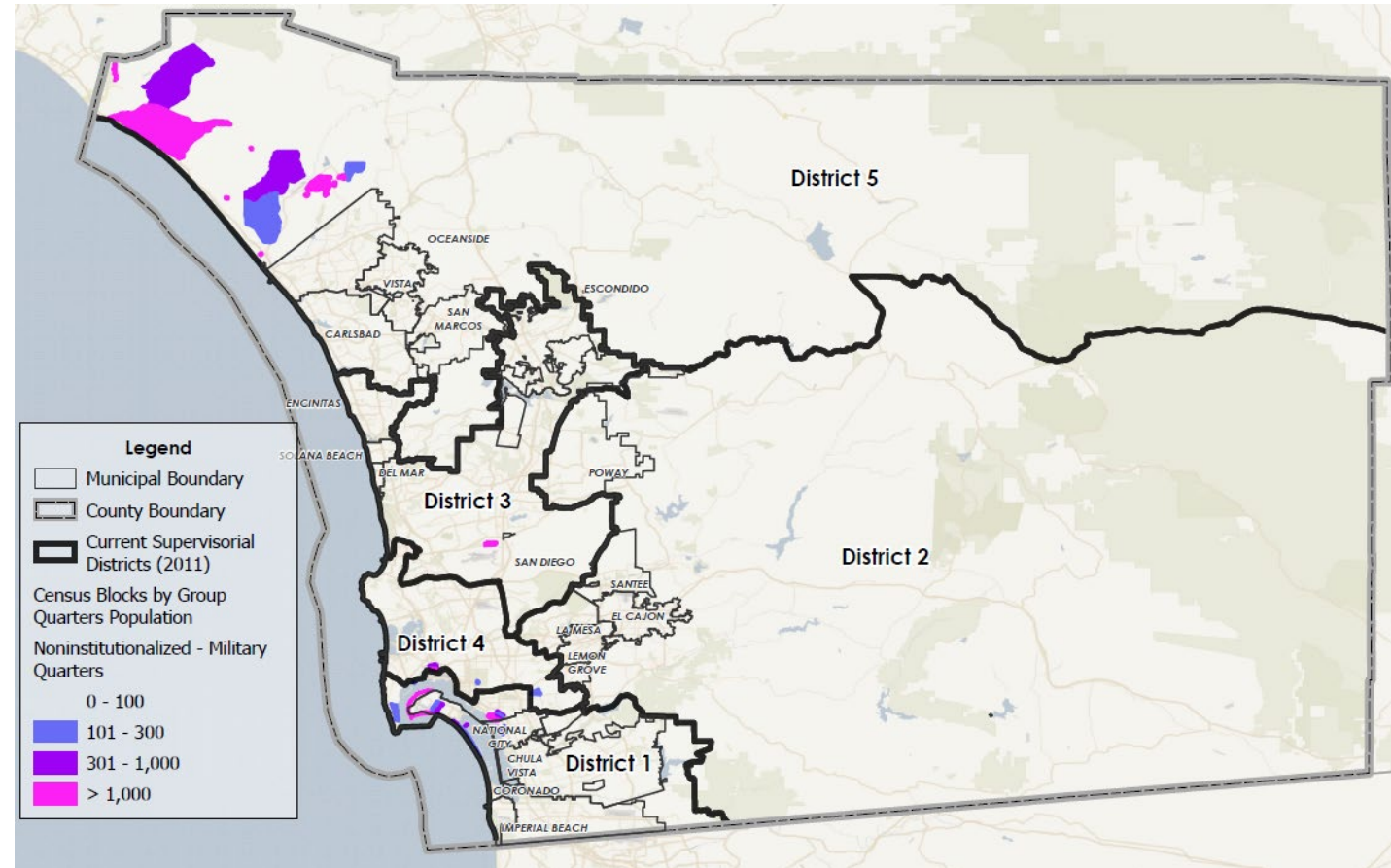
***The institutionalized GC population will be used only insofar as individuals in a state institution can be reallocated back to a Census block where that individual resided immediately before incarceration.



Group Quarters Population

- Multiple sub-categories of the group quarters population including:
- Institutionalized population—Correctional facilities for adults
- Noninstitutionalized population—College/University student housing
- Noninstitutionalized population—Military quarters
- Total population enumerations—which will be used for redistricting—include GQ population**

***The institutionalized GC population will be used only insofar as individuals in a state institution can be reallocated back to a Census block where that individual resided immediately before incarceration.



County of San Diego Independent Redistricting Commission
Website: www.sandiegocounty.gov/redistricting



Hard-to-Count Populations

2020 Census: Tracking Self-Response Rates Map

<https://www.census.gov/library/visualizations/interactive/2020-census-self-response-rates-map.html>

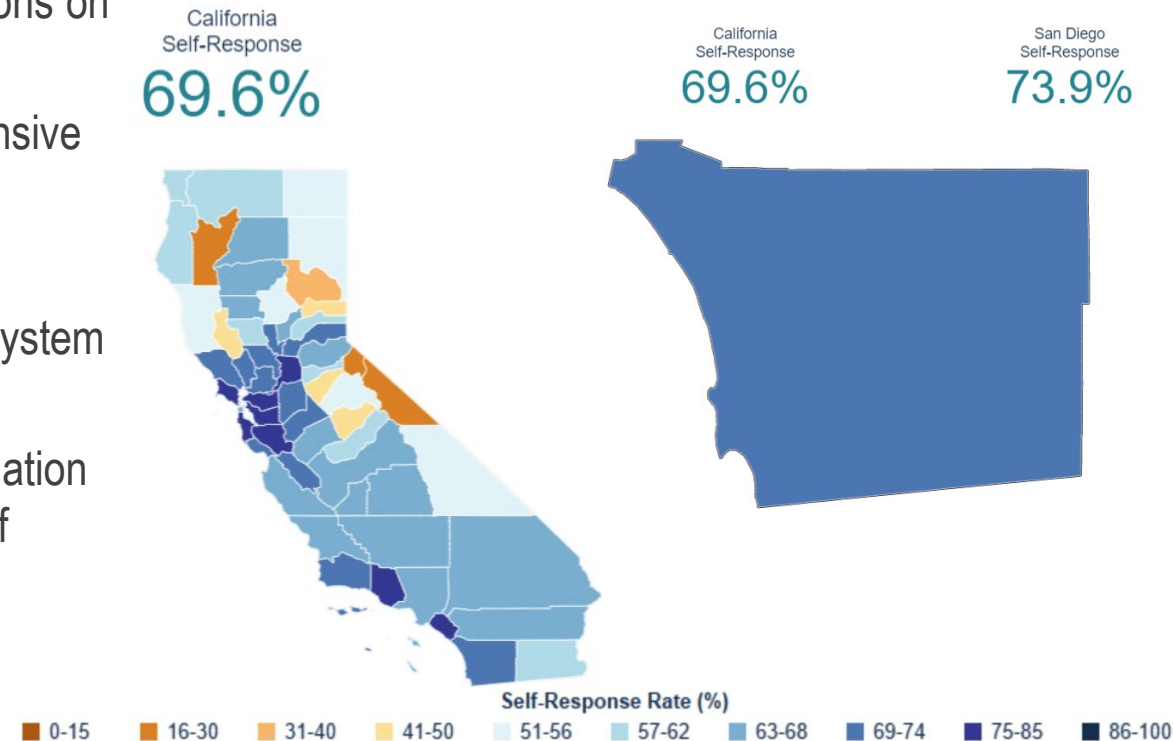
- According to numbers released by the U.S. Census Bureau in October 2020, 99.98% of all housing units and addresses nationwide were accounted for in the 2020 Census as of the end of self-response and field data collection operations on Oct. 15, 2020
- Each census, the Bureau produces coverage estimates and conduct extensive assessments, because completion rates are just early indicators
- Two principal methods are used to measure coverage in censuses
 - 1) Derive coverage estimates from post-enumeration surveys using dual system estimation
 - 2) Demographic Analysis represents a macro-level approach, where population estimates are developed for the census date by aggregating various types of demographic data

2020 Census Response Rate Update: 99.98% Complete Nationwide

<https://www.census.gov/newsroom/press-releases/2020/2020-census-all-states-top-99-percent.html>

Self-Response by County

This map features self-response rates from households that responded to the 2020 Census online, by mail, or by phone.



County of San Diego Independent Redistricting Commission
Website: www.sandiegocounty.gov/redistricting

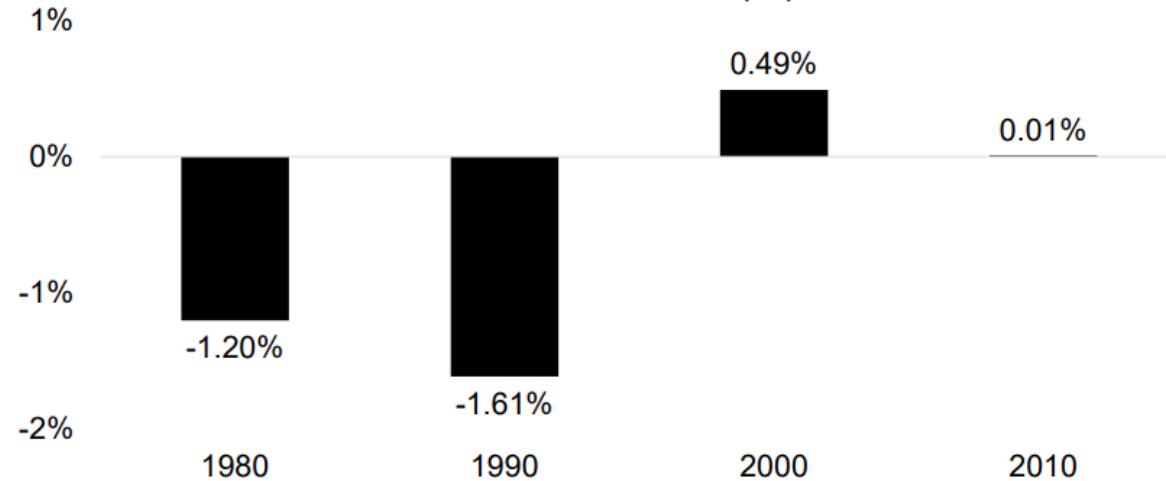


Hard-to-Count Populations

- Disproportionate undercounting of some hard-to-count population subgroups—most notably people of color, young children, and renters—compared to non-Hispanic Whites, older Americans, and homeowners is, unfortunately, a common occurrence

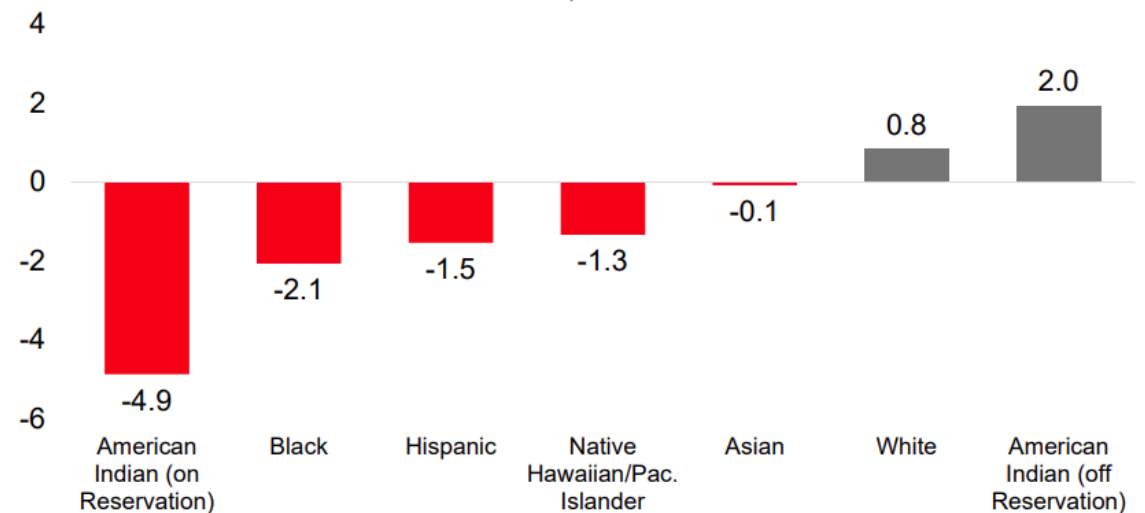
- “Every way we’ve analyzed the 2020 Census — through our extensive reviews during data processing, by comparing the numbers to population benchmarks, and looking at the operations — **the census data are high quality and are fit to use for redistricting.**” DR. RON JARMIN, ACTING DIRECTOR OF U.S. CENSUS BUREAU

Decennial Census Overcount/Undercount (%)



Source: U.S. Census Bureau. Census Bureau Releases Estimates of Undercount and Overcount in the 2010 Census: https://www.census.gov/newsroom/releases/archives/2010_census/cb12-95.html

2010 Census Net Undercount Rate, Nationwide



Source: U.S. Census Bureau. “Census Coverage Measurement Estimation Report” https://www.census.gov/coverage_measurement/pdfs/g01.pdf



County of San Diego Independent Redistricting Commission
Website: www.sandiegocounty.gov/redistricting



Redistricting Criteria

- Have reasonably equal population
- Comply with the federal Voting Rights Act
- Be contiguous
- Minimize division of local neighborhoods or communities of interest
- Minimize division of cities and census designated places
- Easily identifiable and understandable—bounded by natural and artificial barriers, streets, or the boundaries of the county
- Be geographically compact
- No consideration of residence of incumbents or candidates and not favoring or discriminating against a political party

County-specific criteria

- At least three districts shall include unincorporated territory
- Two district must be primarily unincorporated areas

Criteria included within
AB-801 Section 21552
(a) & (b)



County of San Diego Independent Redistricting Commission
Website: www.sandiegocounty.gov/redistricting

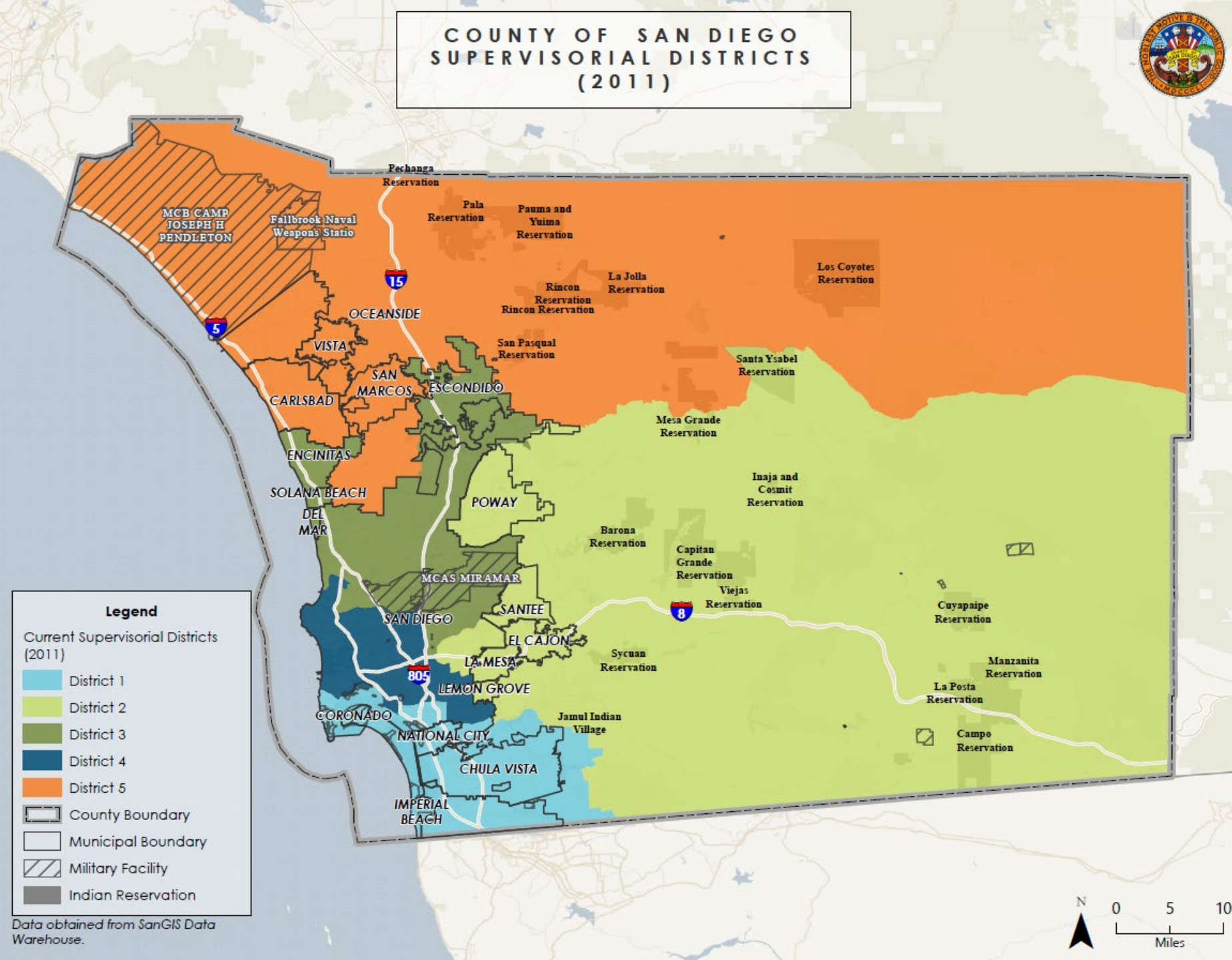


COUNTY OF SAN DIEGO SUPERVISORIAL DISTRICTS (2011)



Overview

- Existing supervisorial districts



2010 Census

- Ideal district population is the County's total population divided by the number of districts (5)
- Overall range (maximum deviation) of 2.7%
- Lower than the 'less-than-10%' maximum deviation presumed to be valid

County Total Population	Ideal District Population	Overall Range	District	District Population	Percent Deviation	Number Over / Under Ideal District Population
3,095,313	619,063	2.7%	1	609,527	-1.5%	-9,536
			2	620,881	0.3%	1,818
			3	617,935	-0.2%	-1,128
			4	626,452	1.2%	7,389
			5	620,518	0.2%	1,455



County of San Diego Independent Redistricting Commission
Website: www.sandiegocounty.gov/redistricting



2010 to 2020 Total Population Change

- All districts experienced growth since 2010, but at different rates
- Highest growth rate in District 3 (Carmel Valley, west of Rancho Bernardo)
- Lowest growth rate in District 4 (Little Italy, Five Points)

County Population Change	Percent County Population Change	District	Population Change per District	Percent Population Change per District
203,321	6.6%	1	31,798	5.2%
		2	41,735	6.7%
		3	52,878	8.6%
		4	30,483	4.9%
		5	46,427	7.5%

2020 Census enumerations are unadjusted and subject to change upon receipt of the adjusted Census data from the Statewide Database.



County of San Diego Independent Redistricting Commission
Website: www.sandiegocounty.gov/redistricting



COUNTY OF SAN DIEGO
SUPERVISORIAL DISTRICTS (2011)
POPULATION CHANGE 2010-2020

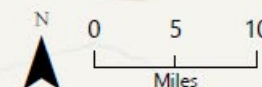
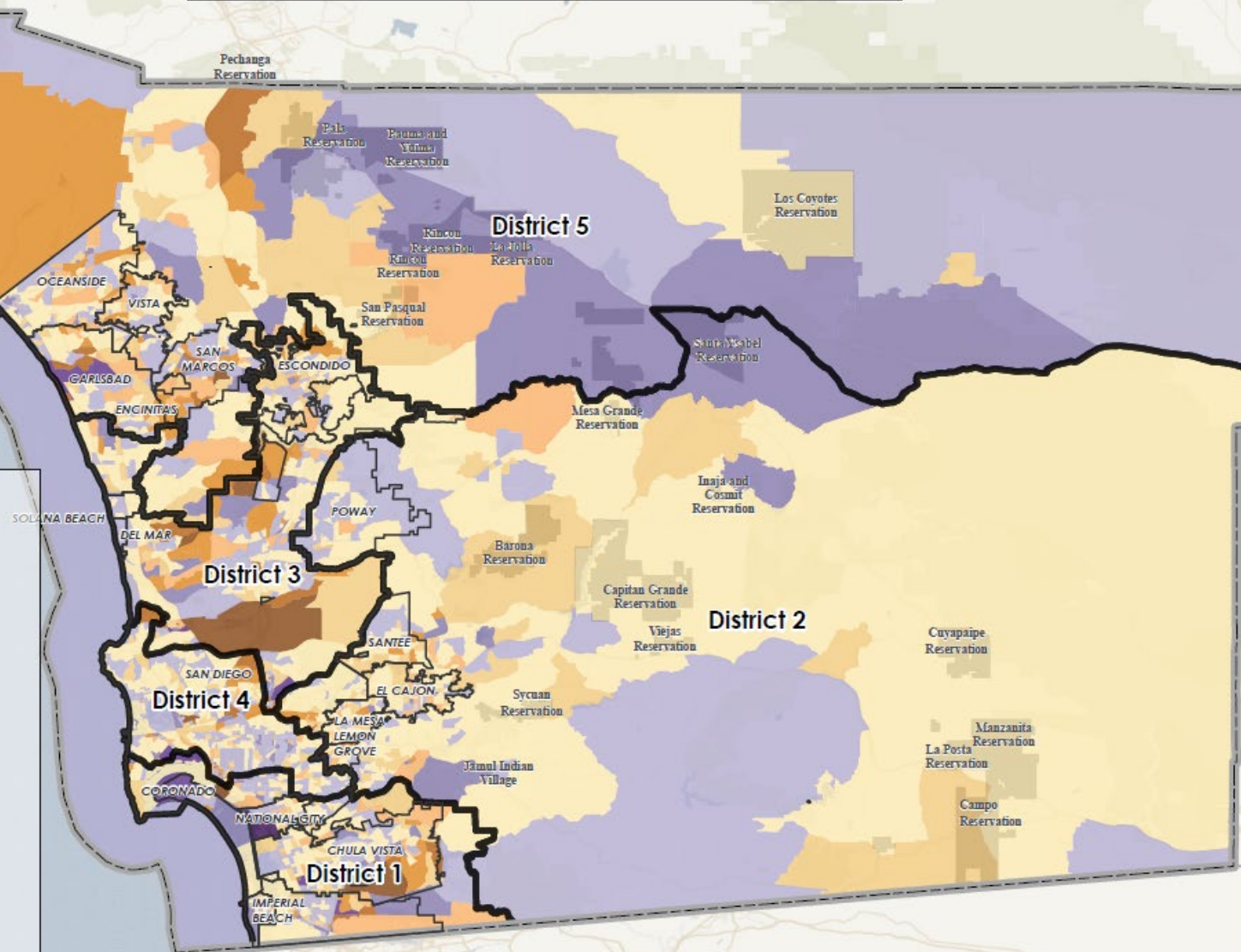
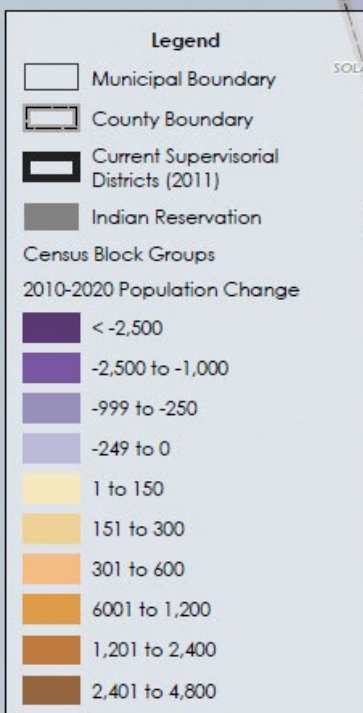


Block Groups

2010 to 2020 Total Population Change

- Block group-level population change
- Generally, population growth is predominant
- However, population decline also occurred 2010-2020 (e.g., District 4: East San Diego, Pacific Beach, Golden Hill)

2020 Census enumerations are unadjusted and subject to change upon receipt of the adjusted Census data from the Statewide Database.



2010 to 2020 Demographic Change

Race and Ethnicity as defined by the U.S. Census Bureau

- The 2020 Census used the required two separate questions (one for race and one for Hispanic or Latino origin) to collect the races and ethnicities of the U.S. population — following the standards set by the U.S. Office of Management and Budget (OMB) in 1997
- The racial categories included in the census questionnaire generally reflect a social definition of race recognized in this country and not an attempt to define race biologically, anthropologically, or genetically
- OMB requires five minimum categories: White, Black or African American, American Indian or Alaska Native, Asian, and Native Hawaiian or Other Pacific Islander
- Also included: Other and Two or More (which include many combinations)
- Hispanic origin can be viewed as the heritage, nationality, lineage, or country of birth of the person or the person's parents/ancestors
- People who identify as Hispanic or Latino may be any race
- Improvements and changes between 2010 and 2020 enabled a more thorough and accurate depiction of how people self-identify, yielding a more accurate portrait of how people report their Hispanic origin and race within the context of a two-question format
- These changes reveal that the U.S. population is much more multiracial and more diverse than what we measured in the past.
- Total population by race and ethnicity included in P.L. 94-171
- 2015-2019 (5-year) American Community Survey Citizen Voting-age Population by Race and Ethnicity Special Tabulation data is used for racially polarized voting analysis to comply with the federal Voting Rights Act

U.S. Census Bureau – About Race

<https://www.census.gov/topics/population/race/about.html>

2020 Census Statistics Highlight Local Population Changes and Nation's Racial and Ethnic Diversity

<https://www.census.gov/newsroom/press-releases/2021/population-changes-nations-diversity.html>



County of San Diego Independent Redistricting Commission
Website: www.sandiegocounty.gov/redistricting



2010 to 2020 Demographic Change

- Total population by race/ethnicity
- Non-Hispanic or Latino White population
 - Constituted a plurality in the County in 2010 (48.5%)
 - Remains so in 2020, but with 43.1% of the population
 - Constitutes majority in Districts 2 and 5 and plurality in Districts 3 and 4
- The Hispanic or Latino population constituted the largest minority population in the County (32.0%) and within each district in 2010
- Hispanic or Latino population has remained the largest minority population in the County (33.9%) and within each district in 2020 (except in District 3, where the Asian population became the largest minority in 2020).
- All minority populations increased in proportion of total population from 2010 to 2020 (except Native Hawaiian or Other P.I.)
- District 1 has the highest proportion of minority residents

2010 Census								
District	Non-Hispanic or Latino							Hispanic or Latino
	White	Black or African American	American Indian or Alaska Native	Asian	Native Hawaiian or Other Pacific Islander	Other	Two or More	
1	20.1%	5.7%	0.3%	12.1%	0.5%	0.2%	2.4%	58.8%
2	62.8%	4.8%	0.7%	4.6%	0.4%	0.2%	3.5%	23.0%
3	54.4%	2.3%	0.3%	19.2%	0.3%	0.2%	3.4%	19.9%
4	48.8%	8.0%	0.3%	11.6%	0.4%	0.3%	3.1%	27.4%
5	55.7%	2.8%	0.7%	5.6%	0.6%	0.2%	2.9%	31.6%
County	48.5%	4.7%	0.5%	10.6%	0.4%	0.2%	3.1%	32.0%

2020 Census								
District	Non-Hispanic or Latino							Hispanic or Latino
	White	Black or African American	American Indian or Alaska Native	Asian	Native Hawaiian or Other Pacific Islander	Other	Two or More	
1	16.9%	5.5%	0.2%	12.6%	0.4%	0.4%	3.4%	60.7%
2	54.8%	4.9%	0.6%	5.8%	0.4%	0.6%	5.9%	27.1%
3	46.6%	2.2%	0.2%	23.0%	0.2%	0.6%	5.7%	21.6%
4	45.7%	7.0%	0.3%	12.5%	0.4%	0.7%	5.4%	28.1%
5	50.7%	2.5%	0.7%	6.8%	0.5%	0.5%	5.0%	33.2%
County	43.1%	4.4%	0.4%	12.1%	0.4%	0.5%	5.1%	33.9%

2020 Census enumerations are unadjusted and subject to change upon receipt of the adjusted Census data from the Statewide Database.



County of San Diego Independent Redistricting Commission
 Website: www.sandiegocounty.gov/redistricting



2020 Census

- Ideal district population increased to 659,727 and overall range increased to 4.5% (with existing boundaries)
- District 1 least populated in 2010 and 2020 – second lowest growth rate
- District 3 second lowest population in 2010 – high growth rate resulted in highest positive percent deviation in 2020

County Total Population	Ideal District Population	Overall Range	District	District Population	Percent Deviation	Number Over / Under Ideal District Population
3,298,634	659,727	4.5%	1	641,325	-2.8%	-18,402
			2	662,616	0.4%	2,889
			3	670,813	1.7%	11,086
			4	656,935	-0.4%	-2,792
			5	666,945	1.1%	7,218

2020 Census enumerations are unadjusted and subject to change upon receipt of the adjusted Census data from the Statewide Database.



County of San Diego Independent Redistricting Commission
Website: www.sandiegocounty.gov/redistricting



United States® Census 2020

Questions?



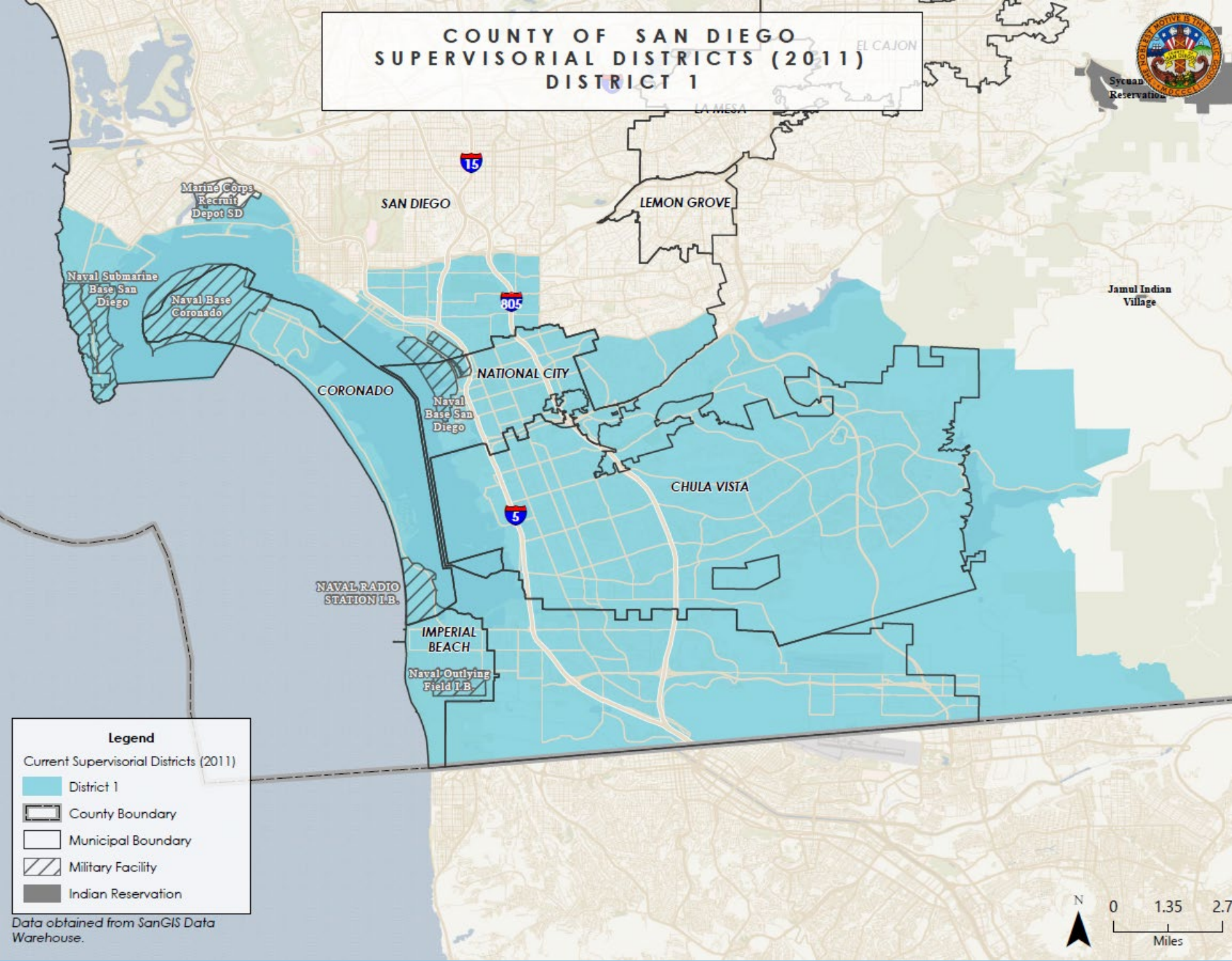
County of San Diego Independent Redistricting Commission
Website: www.sandiegocounty.gov/redistricting



COUNTY OF SAN DIEGO
SUPERVISORIAL DISTRICTS (2011)
DISTRICT 1



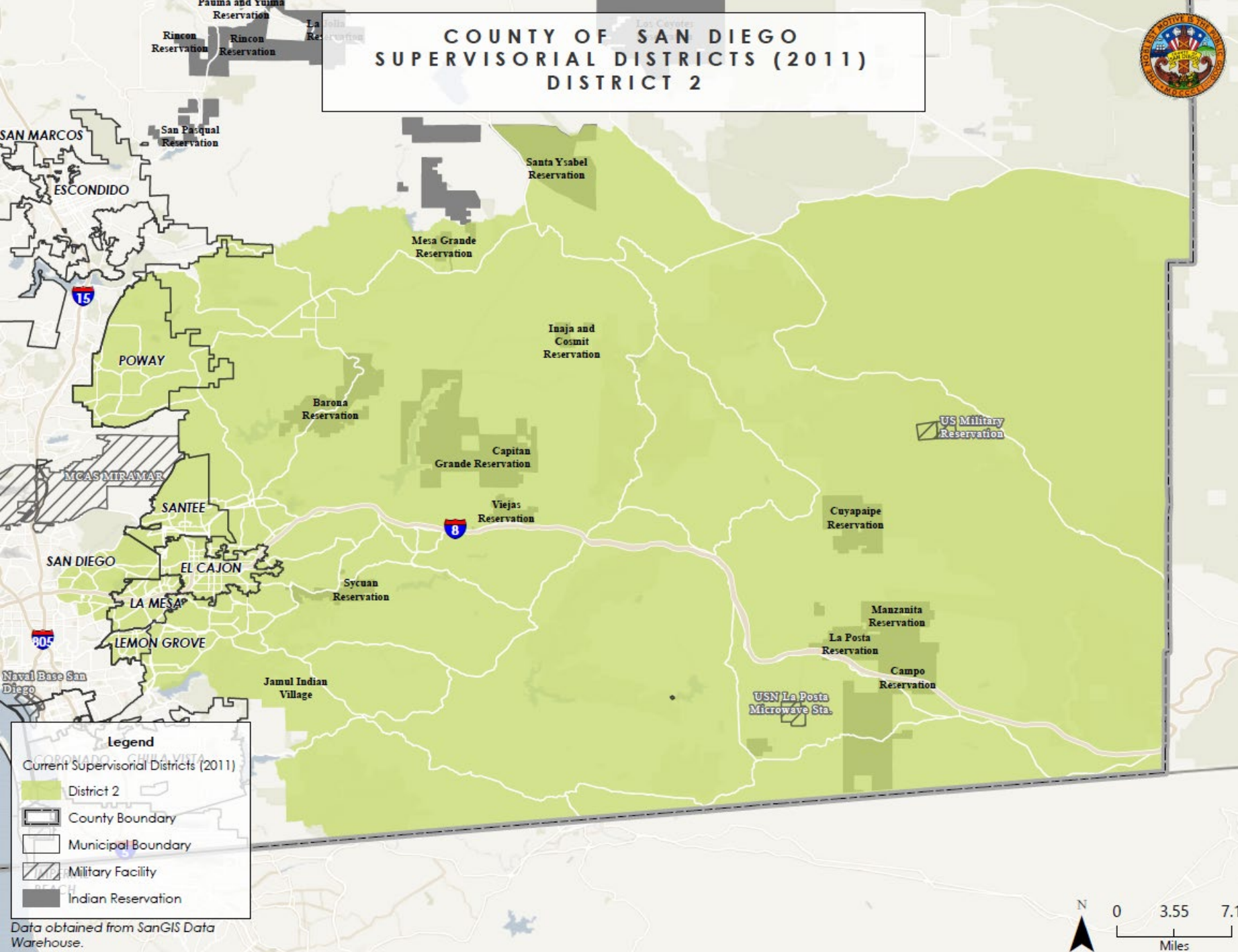
District 1

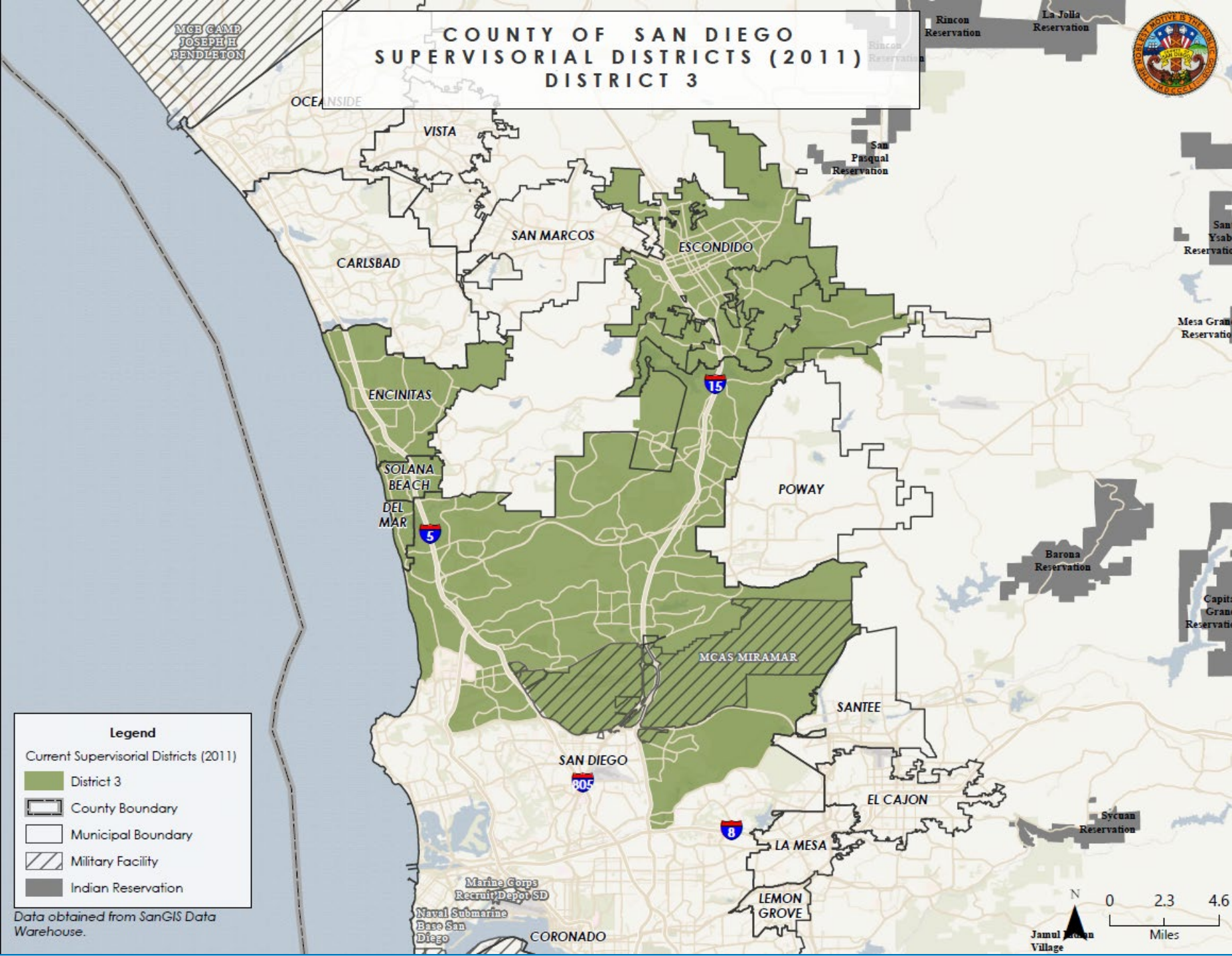


COUNTY OF SAN DIEGO
SUPERVISORIAL DISTRICTS (2011)
DISTRICT 2



District 2





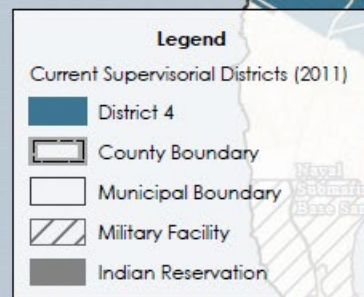
District 3

COUNTY OF SAN DIEGO
SUPERVISORIAL DISTRICTS (2011)
DISTRICT 4

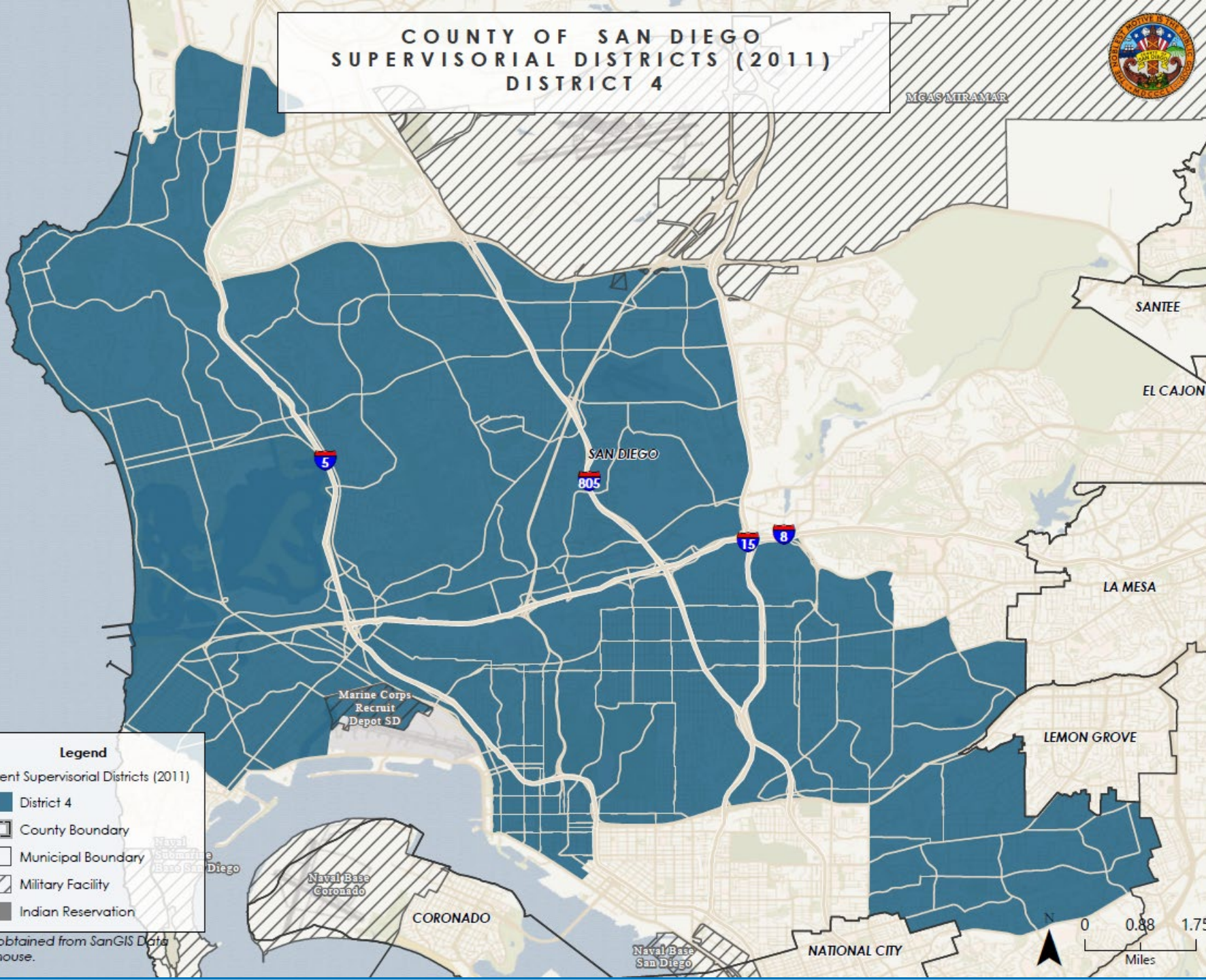


MCAS MIRAMAR

District 4



Data obtained from SanGIS Data Warehouse.



COUNTY OF SAN DIEGO
SUPERVISORIAL DISTRICTS (2011)
DISTRICT 5



District 5

