



LIVE WELL  
SAN DIEGO



A large bridge with multiple concrete pillars spans a body of water at night. The bridge's lights are reflected in the water, creating a shimmering effect. The sky is a deep blue, and the water is dark with bright orange and yellow reflections from the bridge lights.

# AGENDA

---

- **Welcome & Introduction**
- **Pre-mapping Public Hearing Orientation**
- **Introduction to Community Builder**
- **Input from the Community**



# Redistricting in San Diego County

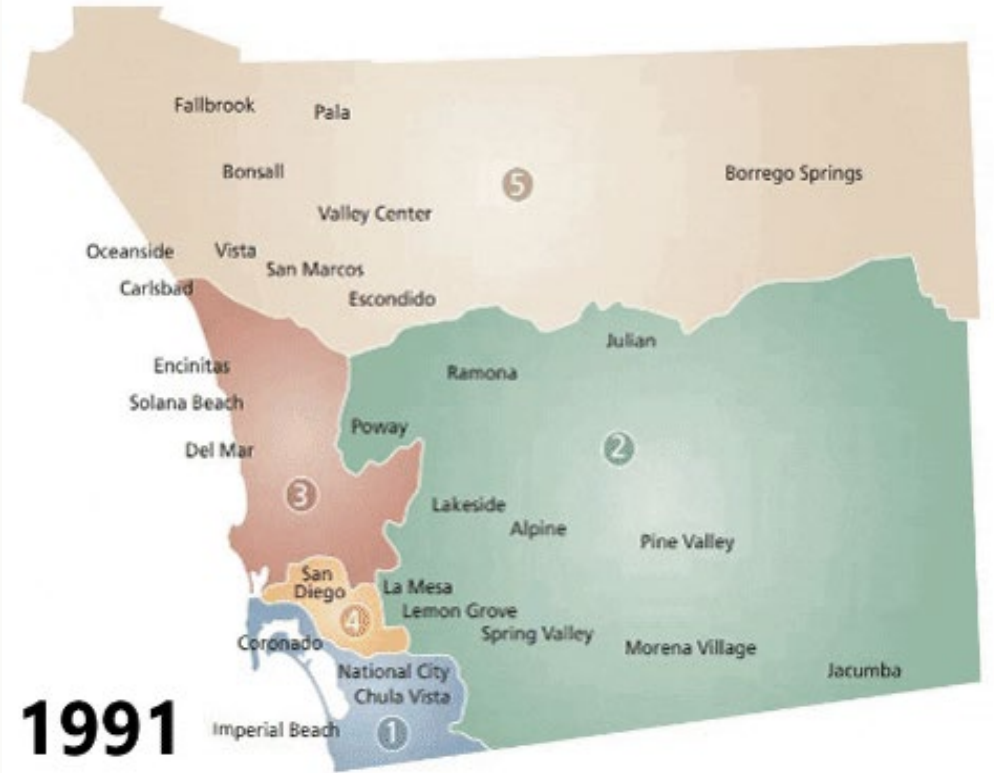
The process of **redrawing district boundaries** for each of the five supervisorial districts so that each district has **reasonably equal populations**.

# Criteria\* Used to Redraw District Boundaries

1. Have reasonably equal population
2. Comply with Voting Rights Act
3. Be contiguous
4. Minimize division of cities, neighborhoods, and communities of interest
5. Be geographically compact

## May NOT:

- Consider place of residence of any incumbent or political candidate
- Favor or discriminate against an incumbent, political candidate, or political party

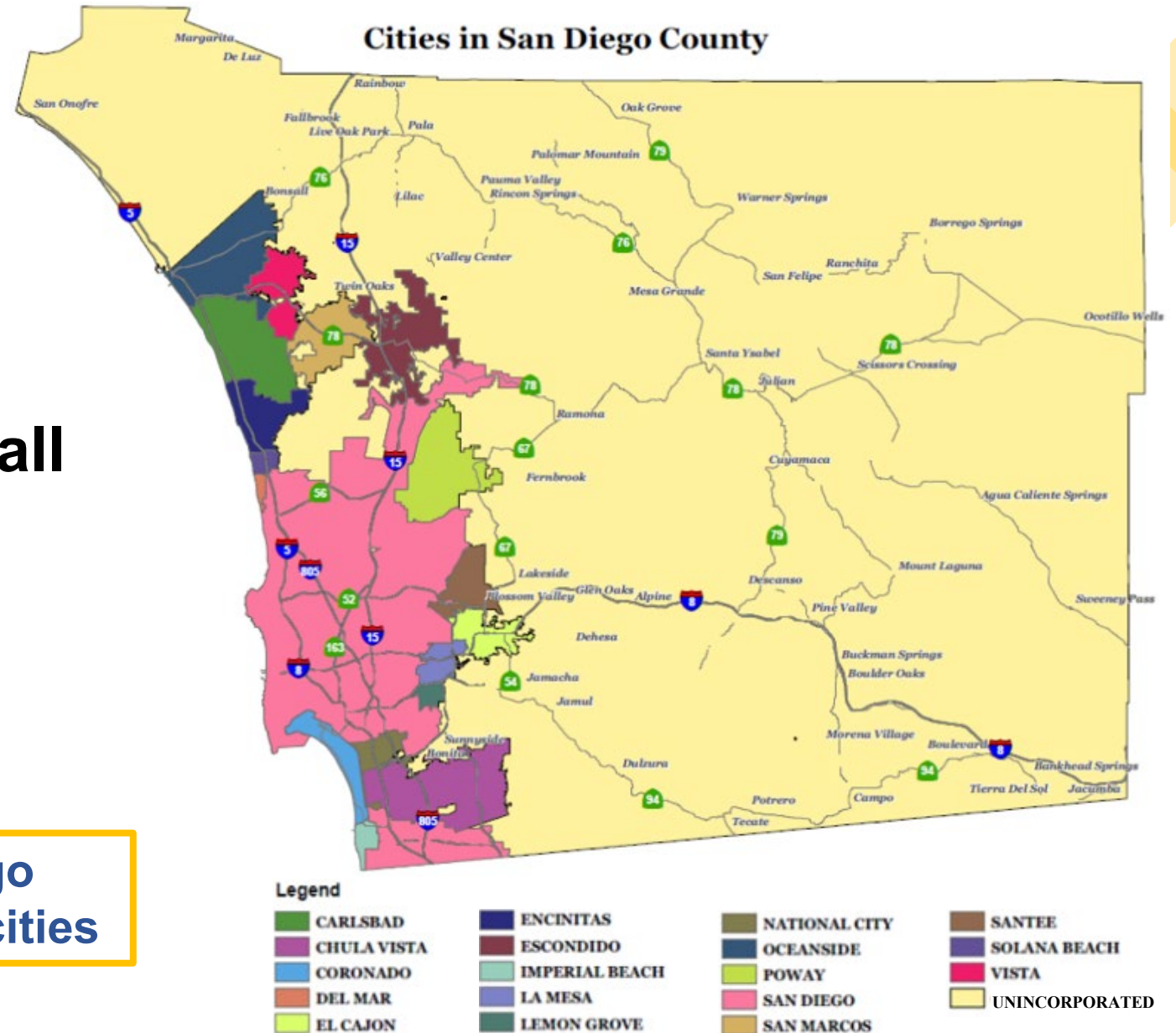




# Criteria\* Specific to San Diego County

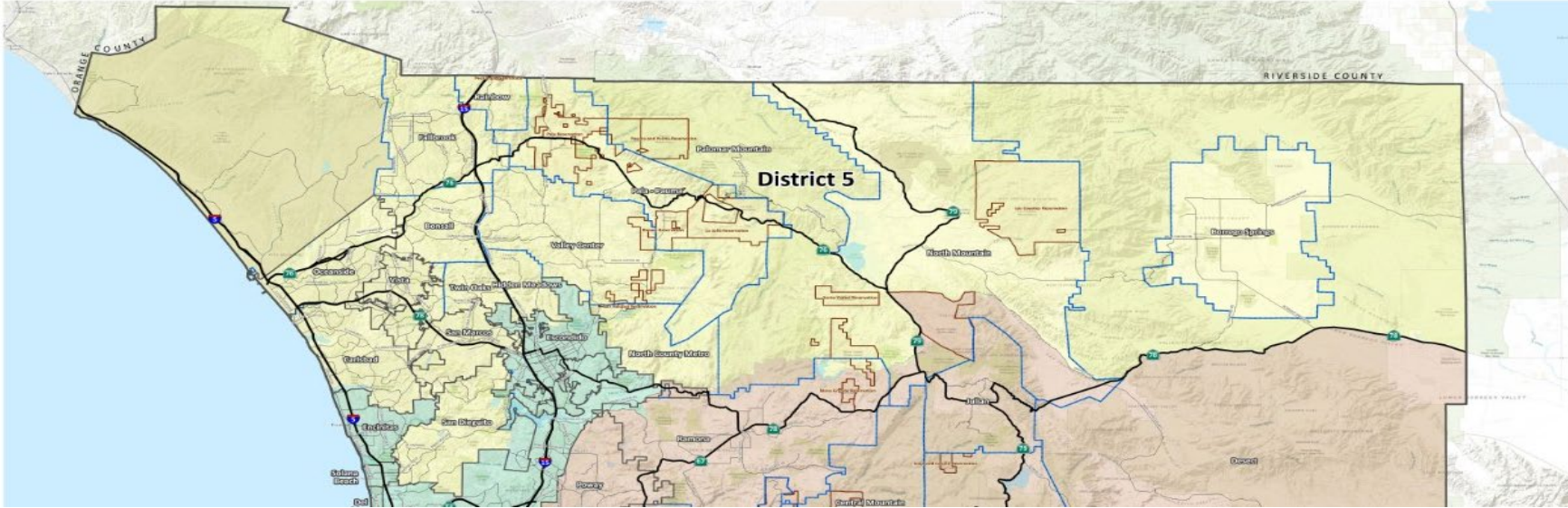
- At least three districts shall include unincorporated territory
- Two must be primarily unincorporated areas

The County of San Diego includes 18 incorporated cities



\*San Diego County Charter, Article IV, Section 400.1

# District 5



## Unincorporated Communities

- Agua Caliente
- Bear Valley
- Birch Hill
- Bonsall
- Borrego Springs
- Buena
- De Luz
- Eagles Nest
- Elfin Forest
- Fairbanks Ranch
- Fallbrook
- Gopher Canyon
- Harmony Grove
- Hidden Meadows
- Jesmond Dene
- La Jolla Amago
- Lake Henshaw
- Lake San Marcos
- Lake Wohlford
- Lilac
- Morettis
- Oak Grove
- Ocotillo Wells
- Pala
- Palomar Mountain
- Pauma Valley
- Rainbow
- Ranchita
- Rancho Santa Fe
- San Felipe
- San Ignacio
- San Luis Rey
- Sunshine Summit
- Twin Oaks Valley
- Valley Center
- Warner Springs
- Winterwarm

## Cities

- Carlsbad
- Oceanside
- Vista
- San Marcos

## Tribes

- Indian Reservations of La Jolla
- Los Coyotes
- Mesa Grande
- Pala
- Pauma/Yuima
- Rincon
- San Ysabel
- San Pasqual

## Others

- National Forest
- State Park lands
- San Onofre Nuclear Generating Station
- Marine Corps Base Camp Pendleton
- United States Naval Weapons Station in Fallbrook





# 2021-2022 ADOPTED FISCAL YEAR BUDGET

COUNTY OF SAN DIEGO



# \$7.23 BILLION



## Why does Redistricting Matter?

- Public Health (COVID-19 response)
- Social Services
- Election Services
- Voter Registration
- Roads
- Parks
- Water
- Libraries
- Law Enforcement/Jails



# How will the County of San Diego Redistricting Commission gather information to redraw boundaries?

---



**2020  
Census  
data**



**Public input to help  
us learn about and  
understand  
communities of  
interest**





# What are Communities of Interest (COI)?

- A contiguous population that shares common social or economic interests that should be included within a single district for purposes of effective and fair representation.
- COI do not include relationships with political parties, incumbents, or political candidates.

**YOUR  
VOICE  
MATTERS**

THE MOST IMPORTANT  
SOURCE OF  
INFORMATION IS FROM

**YOU!**

**THE PUBLIC**



# Ways to Provide Public Input on COI

**One person one vote – every person's vote counts equally!**

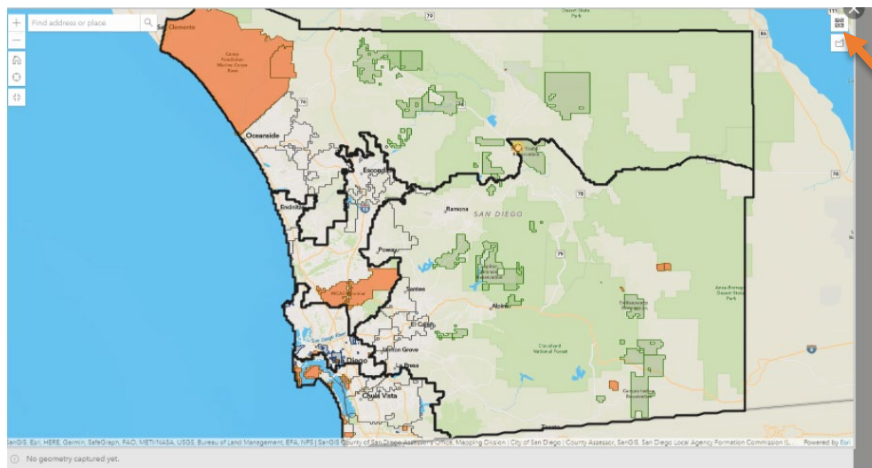


- **Provide oral testimony at pre-mapping public hearing**
- Submit written testimony at any time - email, regular mail, submitting eComments via IRC website
- Draw your community - electronic tool at website or paper map
- Provide as much detail as you can about your community and the characteristics or issues that bind you together and why you should be united in a single district!

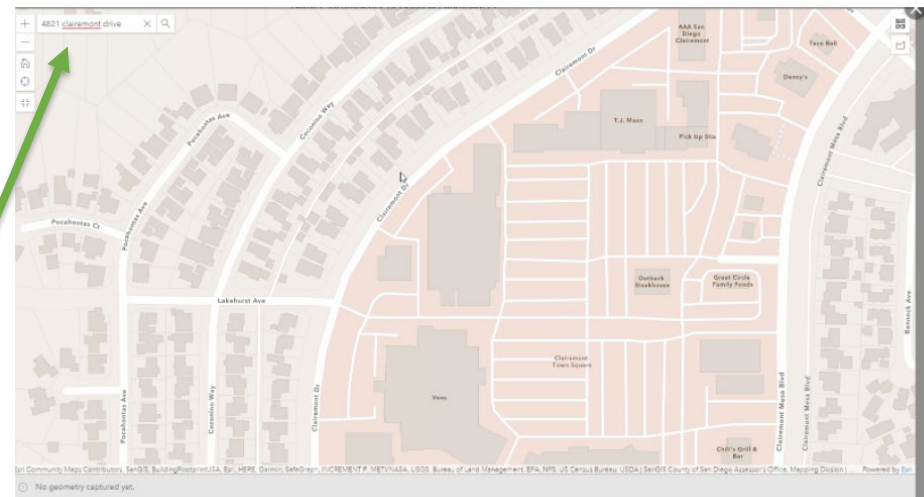


# Community Builder Tool

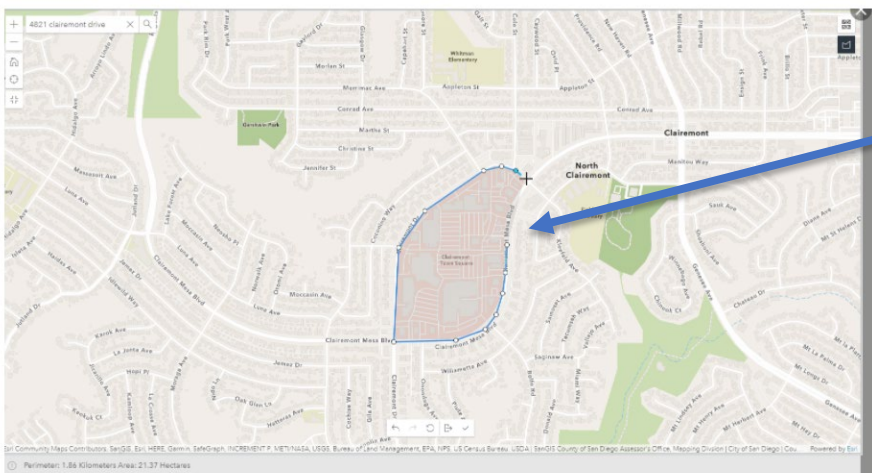
1. Click on the “Community Builder Tool” button on the IRC website and then select “Click Here to Launch Community Builder Tool!”
2. Draw your Community of Interest (COI)!



View the map gallery here



Search for a location here



Draw your COI boundaries



Adjust the map for your COI

# Unadjusted Census Data

	County Population Enumeration	Ideal District Population	Overall Range	District	Population Enumeration per District	Percent Deviation	Magnitude Over / Under Ideal District Population
<b>2010</b>	<b>3,095,313</b>	<b>619,063</b>	<b>2.7%</b>	1	609,527	-1.5%	-9,536
				2	620,881	0.3%	1,818
				3	617,935	-0.2%	-1,128
				4	626,452	1.2%	7,389
				5	620,518	0.2%	1,455

2010 decennial census enumerations spatially allocated to County of San Diego supervisorial districts based on census blocks.

<b>2020</b>	<b>3,298,634</b>	<b>659,727</b>	<b>4.5%</b>	1	641,325	-2.8%	-18,402
				2	662,616	0.4%	2,889
				3	670,813	1.7%	11,086
				4	656,935	-0.4%	-2,792
				5	666,945	1.1%	7,218

2020 decennial census enumerations spatially allocated to County of San Diego supervisorial districts based on census blocks.  
2020 enumerations are unadjusted and subject to change based on the Statewide Database of California's efforts to place the incarcerated population to their last known address.



# Unadjusted Census Data

## 2010 to 2020 Change

County Population Change	Percent County Population Change	District	Population Change per District	Percent Population Change per District
<b>203,321</b>	<b>6.6%</b>	1	31,798	5.2%
		2	41,735	6.7%
		3	52,878	8.6%
		4	30,483	4.9%
		5	46,427	7.5%

2010 decennial census enumerations compared to 2020 decennial census enumerations.  
2020 enumerations are unadjusted and subject to change based on the Statewide Database of California's efforts to place the incarcerated population to their last known address



# **County of San Diego Redistricting Process**



**Hold Public Meetings**

**Conduct Pre-mapping Public Hearings**

**Gather Public Testimony**

**Draw Draft Maps**

**Conduct Post-mapping Public Hearings**

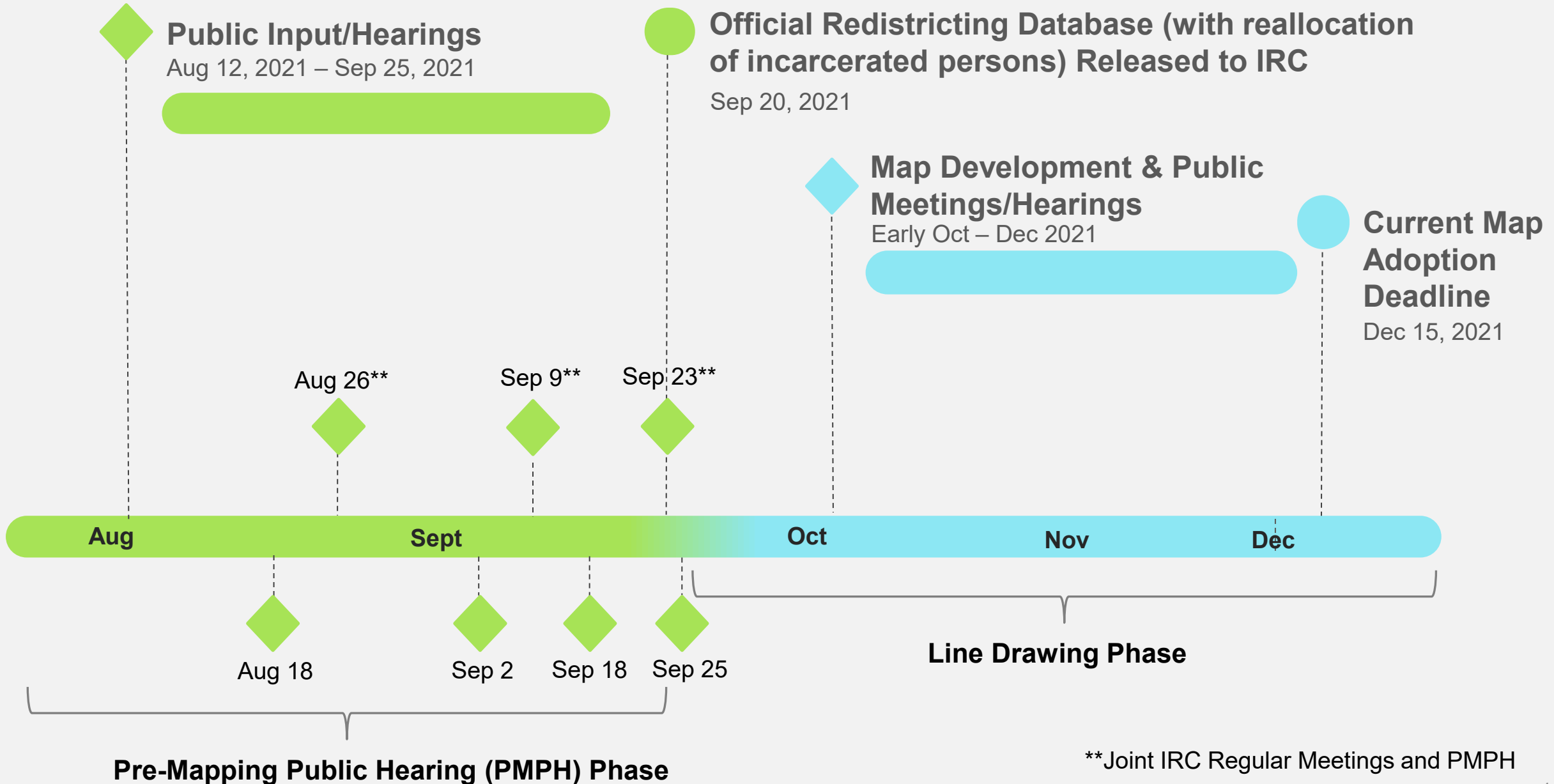
**Adopt Final Map**



# PRE-MAPPING PUBLIC HEARING SCHEDULE

- Aug 12, 5:30 PM | Mira Mesa Senior Center *(Completed)*
- Aug 18, 6:00 PM | Bonita Sunnyside Library *(Completed)*
- Aug 26, 5:30 PM | Ronald Reagan Community Center *(Completed)*
- Sep 2, 6:00 PM | Escondido Chamber of Commerce *(Completed)*
- Sep 9, 5:30 PM | Valencia Park/Malcolm X Library,  
Central San Diego, Emerald Hills *(Completed)*
- Sep 18, 1:00 PM | Green Dragon Tavern & Museum,  
Carlsbad *(Completed)*
- Sep 23, 5:30 PM | Vista Civic Center *(Tonight!)*
- Sep 25, 1:00 PM | Spring Valley Community Center

# REDISTRICTING TIMELINE







# Ways to Participate and Stay in Touch!

**WEBSITE:** [drawyourcommunity.com](https://drawyourcommunity.com)

**EMAIL:** [redistricting@sdcounty.ca.gov](mailto:redistricting@sdcounty.ca.gov)

**PHONE:** 619-409-3003

**ADDRESS:** County of San Diego IRC  
1600 Pacific Highway, Room 402  
San Diego, CA 92101

**COMMUNITY BUILDER:**  
[drawyourcommunity.com](https://drawyourcommunity.com)

**ONLINE SURVEY:**  
[drawyourcommunity.com](https://drawyourcommunity.com)

**QR CODE:**





# Pre-mapping Public Hearing

A venue for the public to provide input to the County of San Diego Independent Redistricting Commission regarding their Communities of Interest

