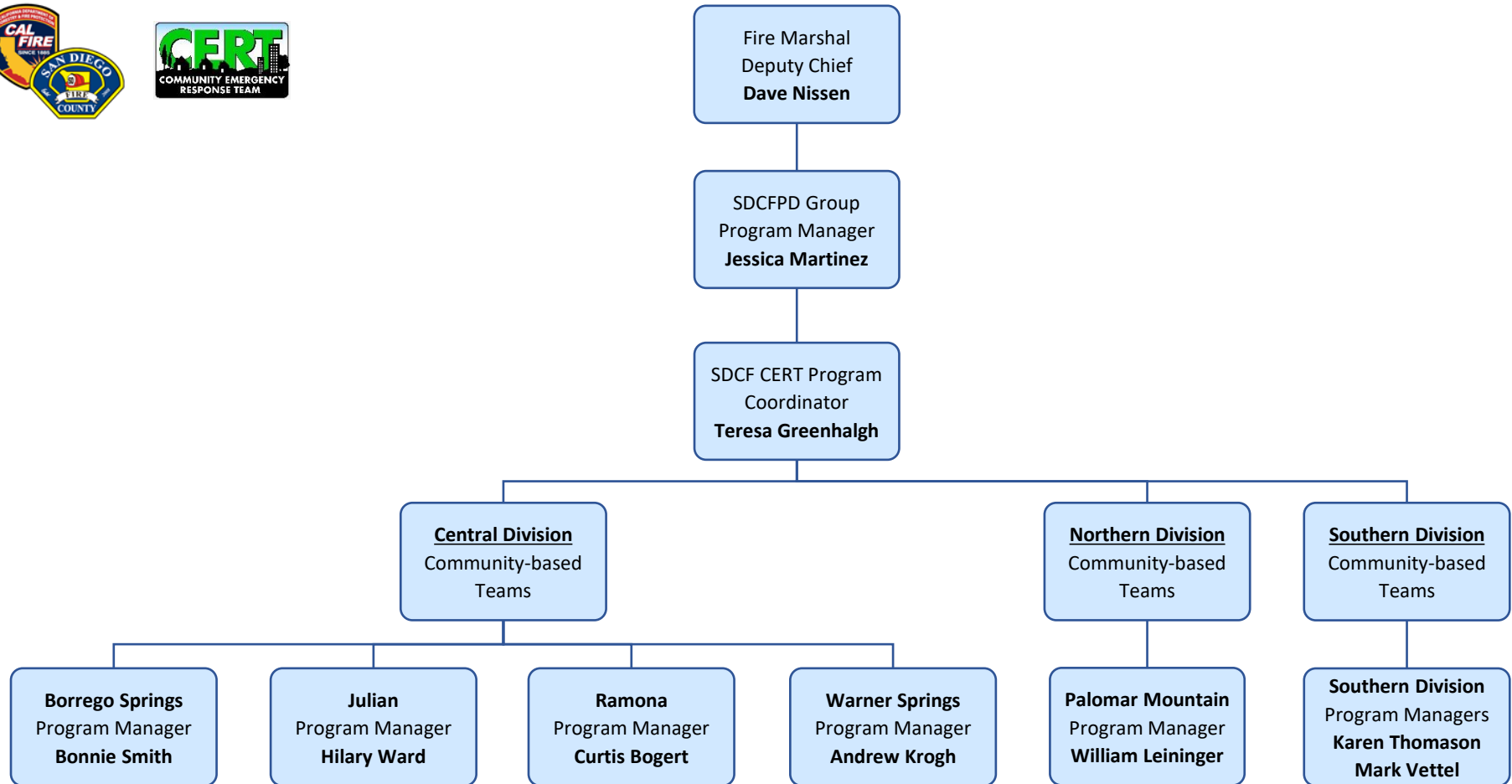


## San Diego County Fire CERT Organization Chart



The San Diego County Fire Community Emergency Response Team (SDCF CERT) is operated as one (1) Program reflecting their Sponsoring Agency's organization and is comprised of three (3) Divisions. The three (3) Divisions are Central, Northern and Southern. Community-based Teams are an integral part of each Division and are based on their geographic location. Each Community-based Team is managed by a trained volunteer CERT Program Manager who lives in the team's jurisdiction.

The Mission of the SDCF CERT Program is to support the Operations Section of the San Diego County Fire Protection District. As an important community service, and to help build more disaster confident and resilient communities, the SDCF CERT Program volunteers promote emergency preparedness by offering free activities, events and training in the unincorporated areas of San Diego County. They are Neighbors Helping Neighbors.