



COUNTY OF SAN DIEGO

Five-Year Consolidated Plan, 2020-2024



LIVE WELL
SAN DIEGO



AGENDA

Time	Topic
5 minutes	Welcome and Introductions
20 minutes	Background presentation on Consolidated Plan
30 minutes	Small Group Discussions
5 minutes	Conclusion and Close Out



The Consolidated Plan:

- Is created every 5 years
- Assists the County in determining community needs
- Provides a community-wide dialogue

Please Help Us Identify:

- Housing Needs
- Economic Development Needs
- Public Facilities and Infrastructure Needs
- Homelessness Needs
- Community Development and Public Service Needs

COUNTY OF SAN DIEGO CONSORTIUM
2015-19 CONSOLIDATED PLAN
AND 2015-16 ANNUAL FUNDING PLAN



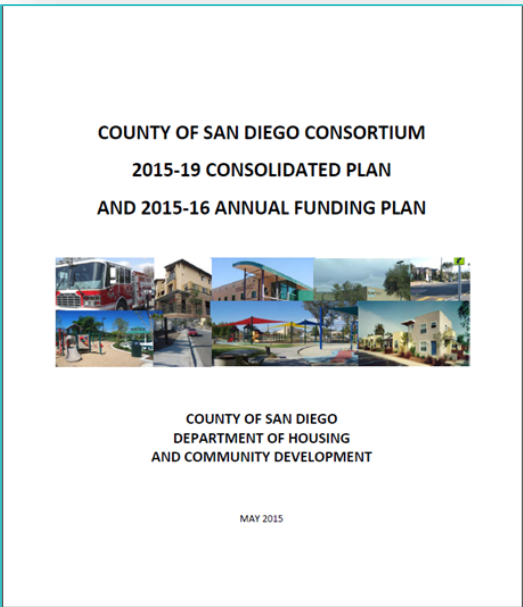
COUNTY OF SAN DIEGO
DEPARTMENT OF HOUSING
AND COMMUNITY DEVELOPMENT

MAY 2015



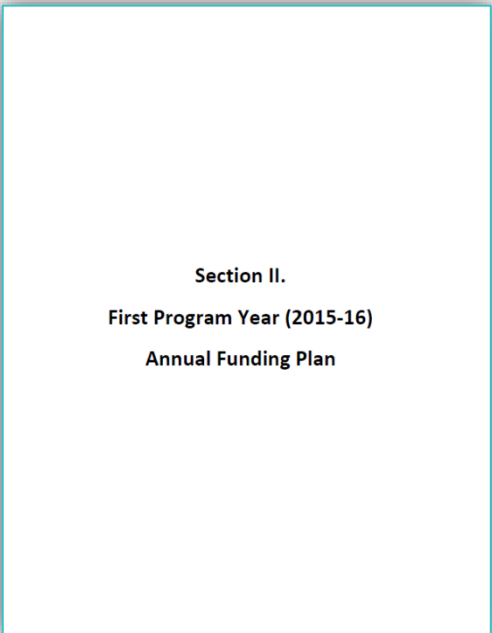
THREE IMPORTANT DOCUMENTS:

“SAY”



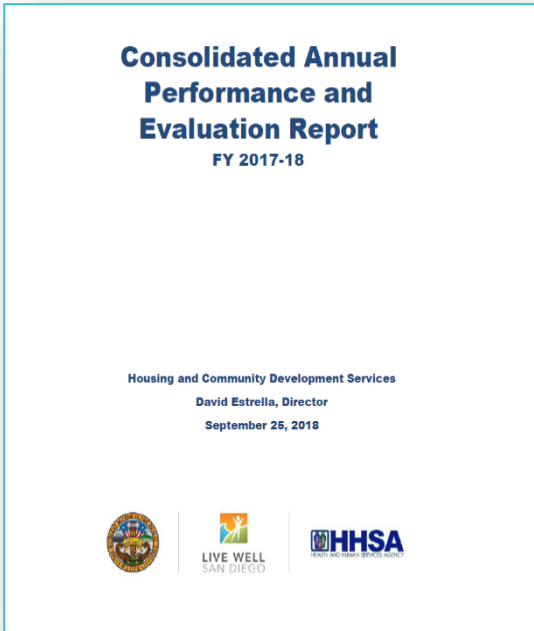
5-Year Consolidated Plan

“DO”



Annual Action Plan

“SHOW”



Consolidated Annual
Performance and
Evaluation Report



PURPOSE OF FEDERAL FUNDS

Community Development Block Grant (CDBG)

Provides resources to address housing and community development needs that benefit very low and low-income individuals

HOME Investment Partnership (HOME)

Creates housing opportunities for low-income households

Federal Programs

Housing Opportunities for Persons with HIV/AIDS (HOPWA)

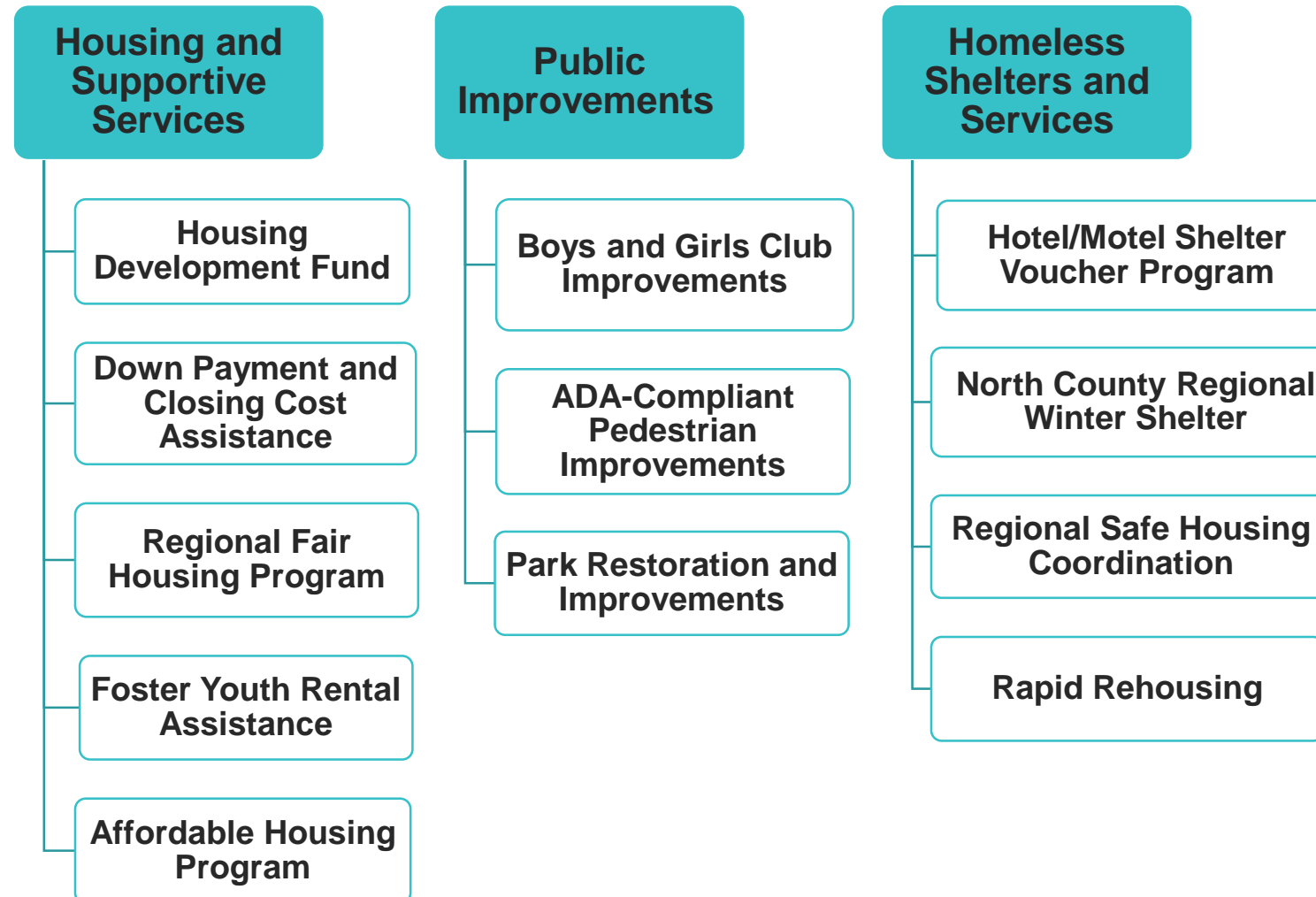
Provides housing assistance and related support services to those living with HIV/AIDS

Emergency Solutions Grant (ESG)

Assists individuals and families to regain permanent housing after experience a housing crisis or homelessness



GOALS AND ALLOCATIONS FOR FY 2019



2018-2019 RESOURCES



LIVE WELL
SAN DIEGO

Source	Amount
CDBG	\$4,144,285
HOME	\$3,287,878
ESG	\$335,938
State ESG	\$425,630
HOPWA	\$3,686,397
TOTAL	\$11,880,128

COUNTY CONSOLIDATED PLAN, 2020-2024



LIVE WELL
SAN DIEGO



COUNTY CONSOLIDATED PLAN, 2020-2024



LIVE WELL
SAN DIEGO





PURPOSE OF THE FEDERAL FUNDS

- The County of San Diego receives federal funds to invest in local community improvement.
- The funds must be used to benefit low- and moderate-income (LMI) families and individuals
- The County does not designate specific geographic targets

(Source: US Department of Housing and Urban Development)



INITIAL NEEDS ASSESSMENT



SAN DIEGO TODAY

HOUSING AFFORDABILITY

- Median rent in San Diego County has increased by 36% since 2000 while median renter household income has increased only 4% when adjusted for inflation.
- Nearly half of County residents spend more than 30% of their income on housing
- There is a 140,000+ shortage of rental homes in the region



LIVE WELL
SAN DIEGO

HOUSING AFFORDABILITY IN SAN DIEGO

FOR RENTERS:

- Fair Market Rent (2019):
 - 1-bedroom: \$1,590
 - 2-bedroom: \$2,068
 - 3-bedroom: \$2,962
- Income needed to rent a 2-bedroom in San Diego: \$72,640 yearly or \$34.92 hourly
- 47% of population are renters
- Estimated renter median income: \$49,228
- Household needs to hold 3.2 full-time jobs at minimum wage to afford a 2-bedroom apartment at fair market rent

FOR BUYERS:

- Median Home Value: \$590,500
- Median County Income: \$81,800
- Maximum House Affordability for Median Income with 10% down-payment: \$419,000



HOUSING AFFORDABILITY IN SAN DIEGO

THE HOUSING SHORTAGE



Total County Housing Units: 1,195,868



Only about 45,000 of these units are affordable and available rental units for very low- and low-income households



San Diego County needs 136,631 more affordable rental units to meet today's demand



Projected need for 13,000 more units per year to match population growth



LIVE WELL
SAN DIEGO

SAN DIEGO COUNTY

COMMUNITY PROFILE



13,643 cases of HIV/AIDS in the County as of December 2016



In 2016, approximately 486,000 San Diego County residents experienced food insecurity, including 163,000 children



More than 230,000 Veterans living in the County



413,000 residents aged 65+ in the County



LIVE WELL
SAN DIEGO

SAN DIEGO COUNTY

ECONOMIC LANDSCAPE



County Unemployment Rate: 3%, below the State average
The unemployment rate measures those are willing and able to work, but are jobless.



20,400 new nonfarm jobs have been added to the region in the past year (April 2018 – April 2019)



14% of San Diegans and 18% of children under 6 live below the federal poverty line



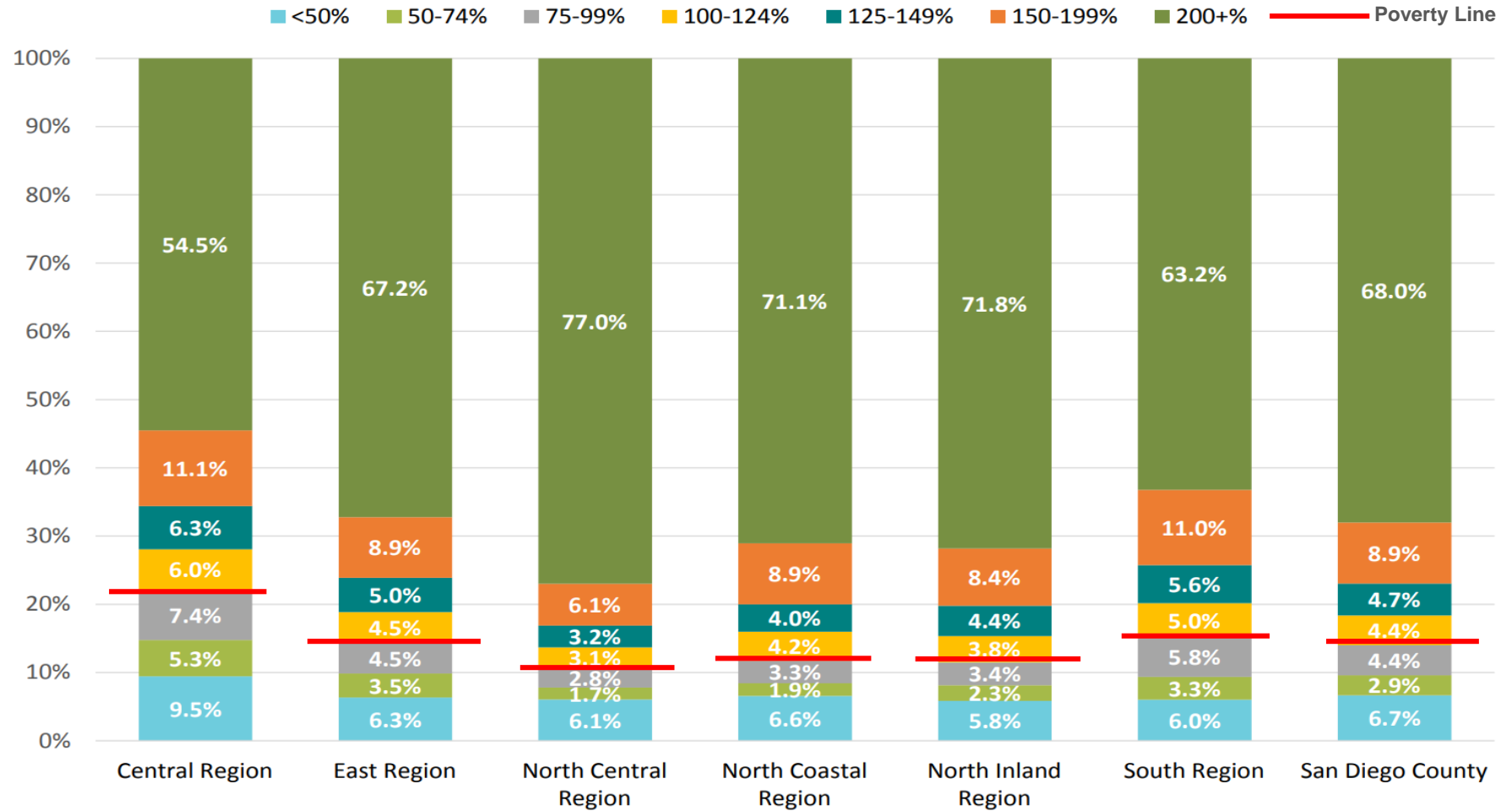
62.6% of the population has not graduated college and 13.3% of the population has not graduated high school



LIVE WELL
SAN DIEGO

POVERTY LEVELS BY GEOGRAPHY

Percent of Population by Poverty Level by HHSA Region, 2016



Source: U.S. Census Bureau, 2012-2016 American Community Survey 5-Year Estimates, Table B17024.

Prepared by: County of San Diego, Health and Human Services Agency, Public Health Services, Community Health Statistics Unit, 2018.



LIVE WELL
SAN DIEGO

SAN DIEGO COUNTY

HOMELESS POPULATION



8,102 homeless individuals in the County
(January 2019)



3,626 are sheltered and 4,476 are
unsheltered



Approximately 1,100 are veterans



Approximately 1,552 are younger than 24



LIVE WELL
SAN DIEGO



YOUR PARTICIPATION

What would you like to see in your community?



COUNTY CONSOLIDATED PLAN, 2020-2024

Make your voice heard!

Complete our community needs survey:

[https://www.surveymonkey.com/
r/CountySDConPlan](https://www.surveymonkey.com/r/CountySDConPlan)



LIVE WELL
SAN DIEGO



County of San Diego Community Needs Survey

FY 2020 - 2024 Consolidated Plan

The County of San Diego needs your input! Over the next five years, the County will be investing millions of dollars in affordable housing, homelessness prevention and services, and community services and amenities. Your voice will guide that investment and help create healthy, safe, and thriving communities in San Diego County!



NEXT STEPS



LIVE WELL
SAN DIEGO



ANTICIPATED TIMELINE

TASK	TIMEFRAME
Survey Open	July-August 2019
Applications Open	September-October 2019
Public Comment on Draft Plan	February 2020
Presentation of Full Consolidated Plan	March 2020
Presentation of Revisions (if necessary)	April 2020



QUESTIONS? PLEASE ASK!

County of San Diego

Marco DeLa Toba (858)694-8724
Marco.Delatoba@SDcounty.CA.gov

Freddy Villafan (858)694-8747
Freddy.Villafan@SDcounty.CA.gov

LeSar Development

Erica Snyder (619) 236-0612 X 114
Erica@LeSarDevelopment.com

Sarah Snook Brunson (619) 236-0612
Sarah@LeSarDevelopment.com