



Building Code Update and Electric Vehicle Charger Program: 2024 Climate Action Plan (CAP) Implementation

Public Meeting

July 22, 2025

Housekeeping Items

The image shows a Zoom interface with a dark background. At the top, there are three white text instructions. Below each instruction are icons for Zoom features. Red arrows point from the text to the icons. The first instruction, 'Please stay muted during presentation.', has an arrow pointing to the 'Unmute' icon (a microphone with a red slash). The second instruction, 'Use chat or 'Raise Hand' for Open Discussion at the end.', has two arrows pointing to the 'Chat' (speech bubble) and 'Raise Hand' (hand icon) icons. The third instruction, 'Use the Q&A feature anytime for questions.', has an arrow pointing to the 'Q&A' (speech bubbles) icon. At the bottom right is a red 'Leave' button.

Please stay muted during presentation.

Use chat or 'Raise Hand' for Open Discussion at the end.

Use the Q&A feature anytime for questions.

Unmute

Chat

Raise Hand

Q&A

Leave

**Polls will automatically pop up on Zoom when launched by host.*

Agenda

- 2024 Climate Action Plan
- Upcoming Energy Program
- Upcoming Built Environment & Transportation Program
- Open Discussion





Who Is Joining Us Today?

Get Ready For Some Polling Questions!

Poll Question #1

Which industry or sector are you most closely associated with? (Select one)

Energy (*utilities, renewables, energy efficiency*)

Building industry and development (*construction, design, permitting*)

Transportation (*electric vehicle owner, transit user*)

Other (*general public*)

Poll Question #2

Do you live in or have a connection to the unincorporated area of San Diego County?
(Select ALL that apply)

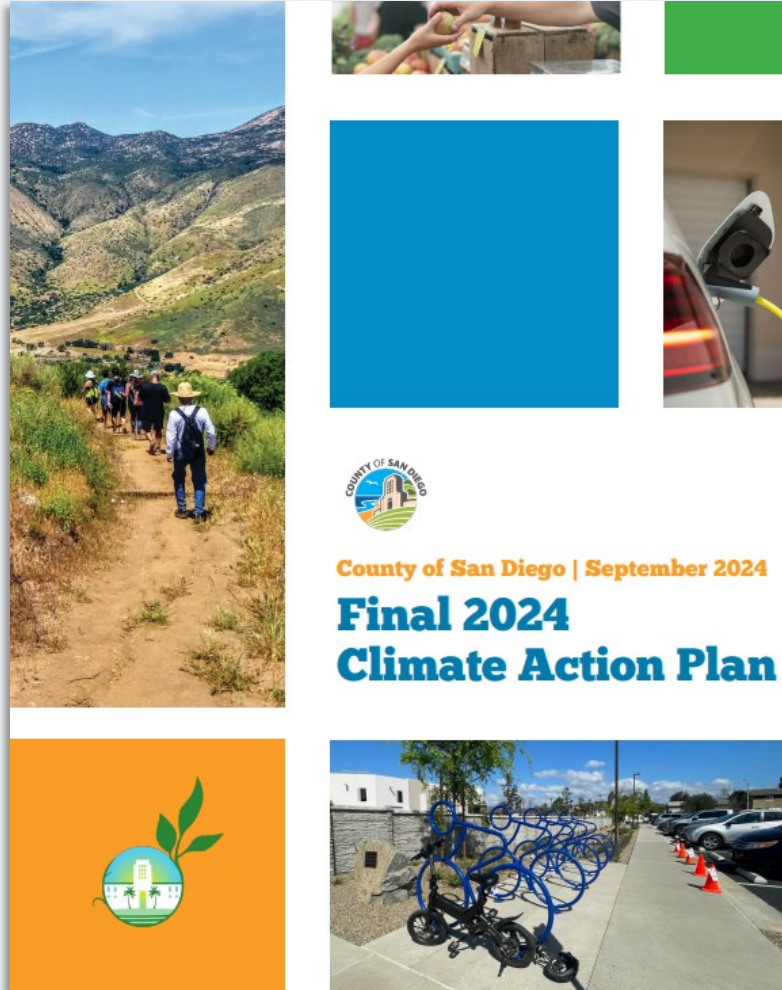
Yes – I live in the unincorporated area.

Yes – I commute there regularly for work and/or errands.

Yes – I own or operate a business in the unincorporated area.

No – I do not live in or have a connection to the unincorporated area.

2024 Climate Action Plan



- Adopted in September 2024
- Net Zero Emissions by 2045
- 21 Measures; 70 Actions
 - Reduce greenhouse gases (GHGs)
 - Achieve co-benefits
 - Advance equity-based outcomes
- Ongoing stakeholder engagement



BUILT ENVIRONMENT
& TRANSPORTATION



ENERGY



SOLID WASTE



WATER &
WASTEWATER



AGRICULTURE &
CONSERVATION

CAP Programs Under Development

Energy

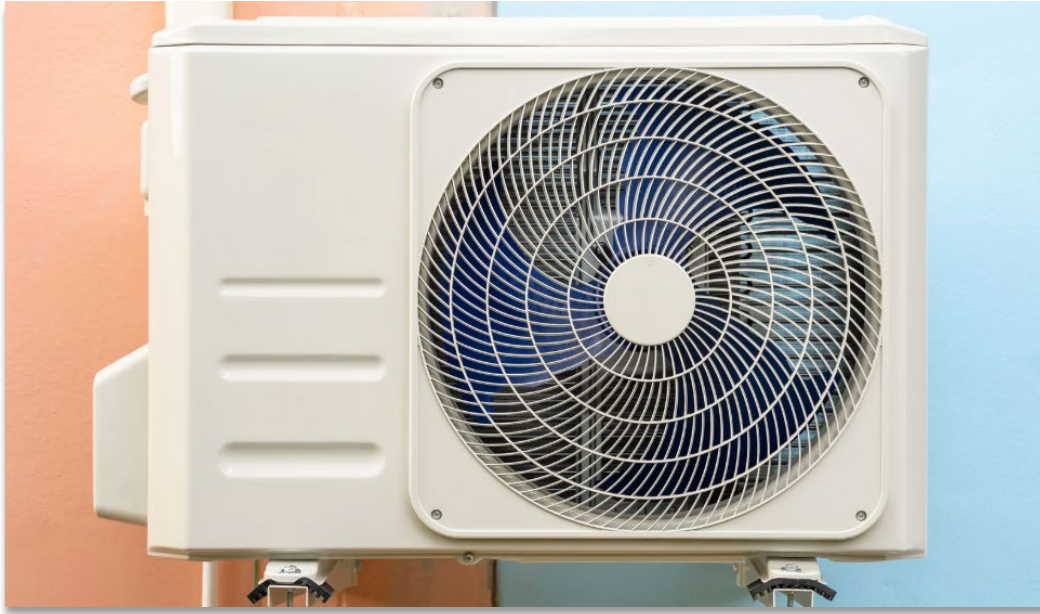


- Green Building Incentive Program Update

Built Environment & Transportation



- Public Electric Vehicle Charger Incentive Pilot Program



Energy

Green Building Incentive Program Update

Poll Question #3

Which of the following best describes your connection to buildings and development? (Select one)

Homeowner

Renter

Business owner or property manager

Builder or developer

Other (*please specify*)

Poll Question #4

How familiar are you with the State building code? (Select one)

Very familiar

Somewhat familiar

Not familiar at all

Triennial County Building Code Update



WHAT: The State updates the **building code** every three years.



HOW: The County will adopt the 2025 California Building Standards Code in early **2026**.



WHY: Enforcement of latest state code is **required**.



CONNECTION TO CAP: Reduces emissions and improves building performance.



LOOK AHEAD: Resources and technical support available.

Green Building Incentive Program Update



WHAT: County's **incentive program** for sustainable building practices.



HOW: Expands incentive options for **green building practices**.



WHY: Lowers upfront and long-term costs.

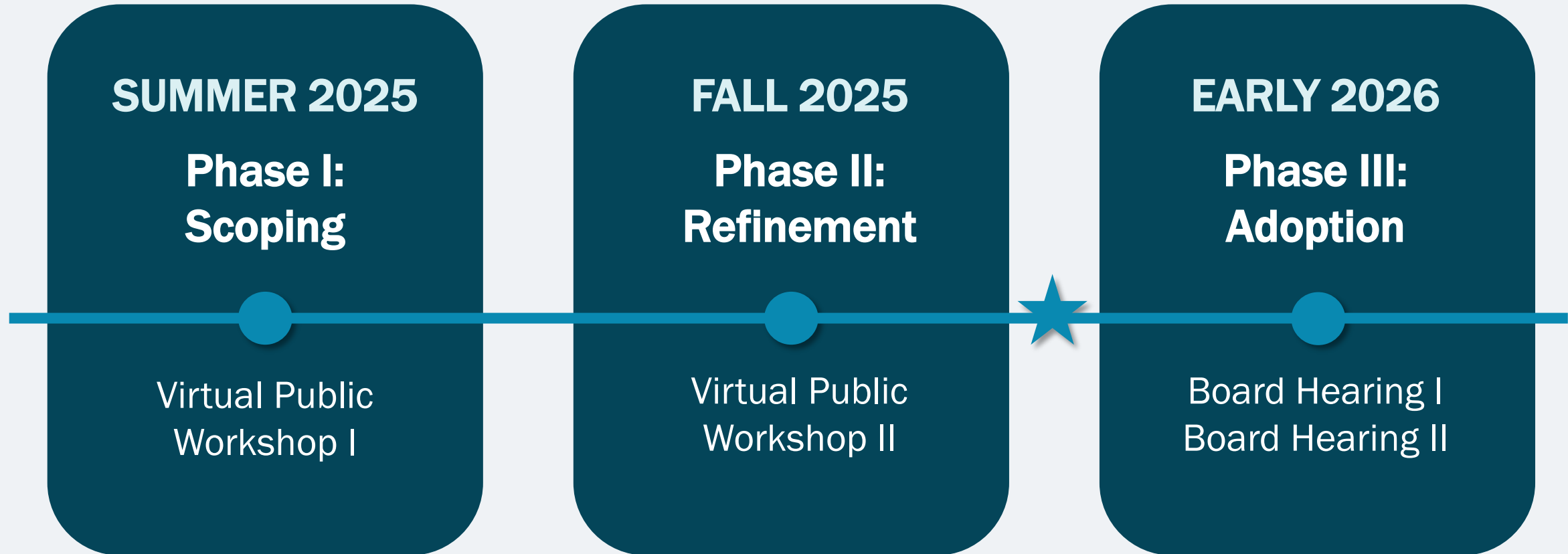


CONNECTION TO CAP: Promotes low-emission, high-efficiency buildings.



LOOK AHEAD: Save money and boost building performance in **2026**.

Timeline – Building Code & GBIP



State building code becomes effective January 1, 2026.



Built Environment & Transportation

Public Electric Vehicle Charger Incentive Pilot Program

Public Electric Vehicle Charger Incentive Pilot Program



Public electric vehicle (EV) charging stations on private property



Two-year pilot program



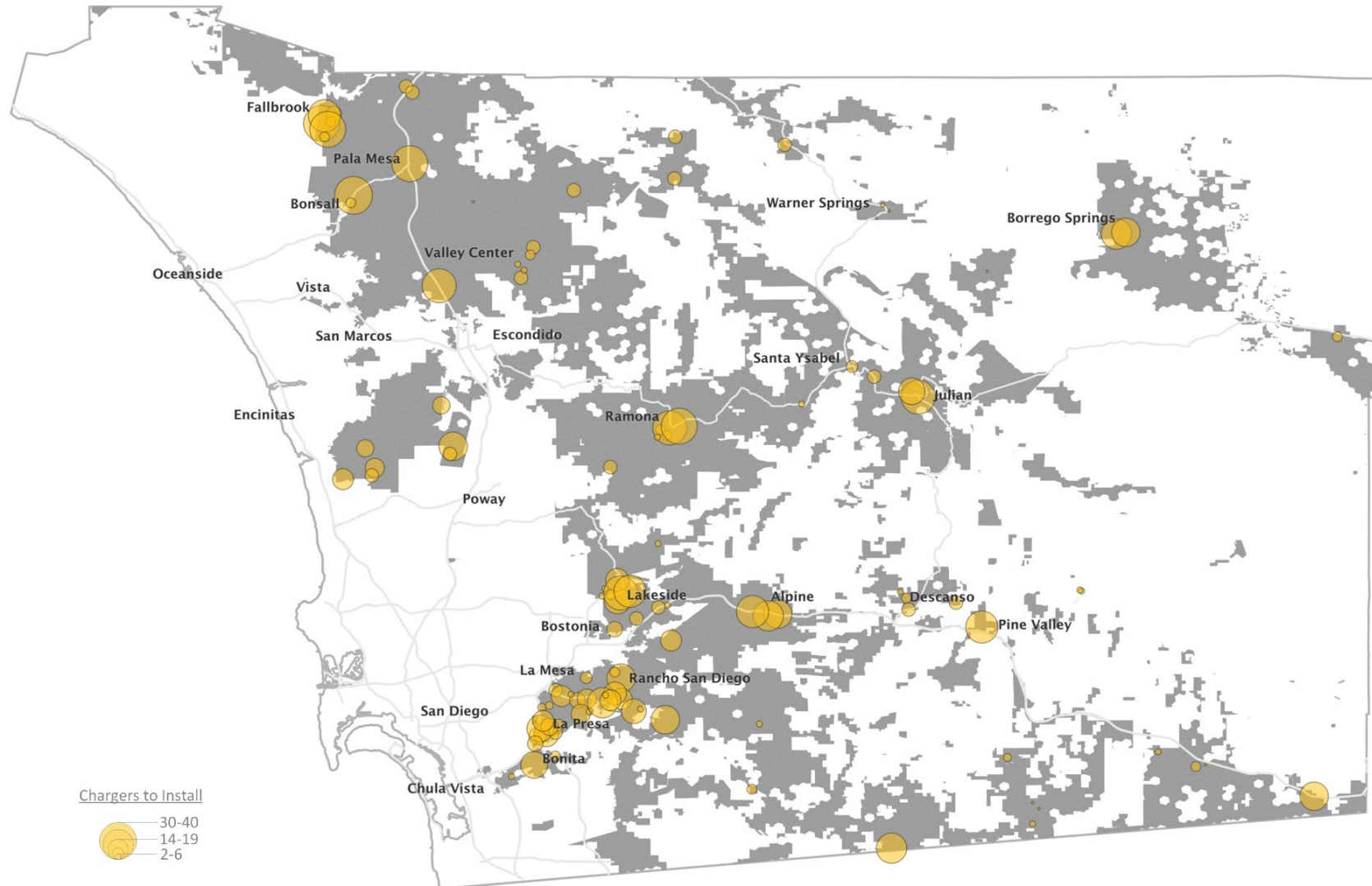
Reimbursement-based



Equity-focused



EV Charging – Potential Priority Locations



Factors Considered



Existing EV chargers



Accessible commercial areas



East-west corridors



Workforce centers



Multi-unit dwellings



Additional equity considerations

Poll Question #5

Which of the following factors should be prioritized when deciding where to place public EV chargers? (Select ALL that apply)

Popular commercial destinations

Areas with limited at-home charging options
(*multi-unit housing*)

Locations near essential services
(*grocery stores, clinics, schools*)

Areas with more low-income households

East-west rural travel corridors

Areas with high air pollution exposure

Workforce centers

Proximity to tribal communities

Poll Question #6

Are there other equity-related factors or community characteristics we should consider when selecting charger locations?

Share your thoughts

Program Guidance

Integrating Equity into the Program



Program Structure



- First come, first serve
- Project readiness tiers
- Top scores
- Lottery
- Other



Incentive Type



- Larger incentives
- Reserved funding
- Preferential points
- Other



Outreach



- Program promotion



Other



- Other recommendations

Poll Question #7

Which property types should the program prioritize for EV charger incentives?
(Select ALL that apply)

Retail/commercial parking lots

Multi-family housing complexes

Community centers, health clinics, and schools

Industrial/business parks

Other (*please specify*)

Poll Question #8

Given limited program funding, larger incentive amounts per project will reduce the total number of chargers the program can support.

How should the County strike the right balance? (Select one)

Provide larger incentives to fewer participants to ensure full project cost coverage

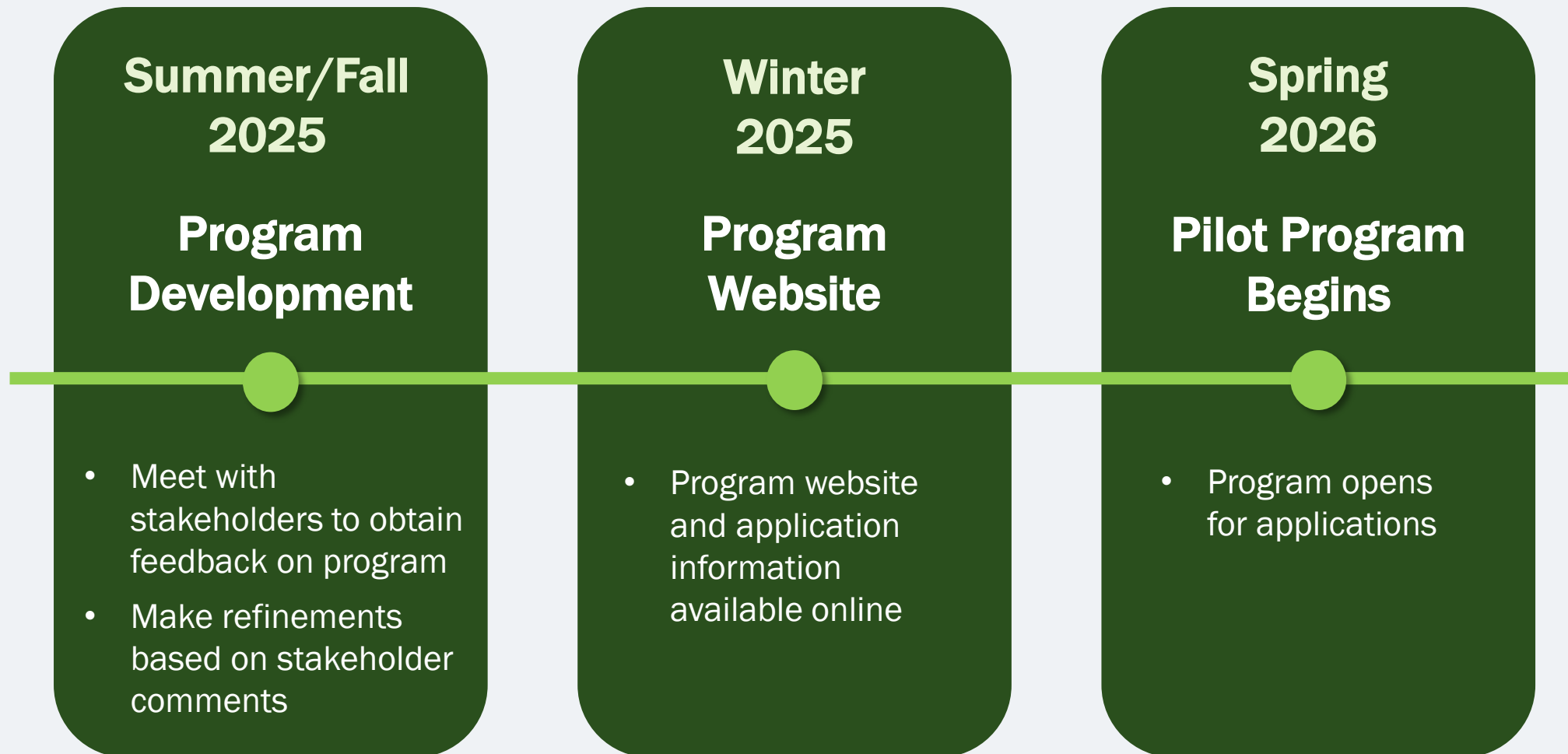
Provide moderate incentives to more participants to maximize charger installations

Offer a tiered approach based on project type or community need

Not sure

Other (*please specify*)

Timeline – EV Charger Incentive Program



Early CAP Implementation Efforts



Purchase of
Agricultural
Conservation
Easement (PACE)
Program



Equity Driven Tree
Planting Program



Compost Voucher
Program

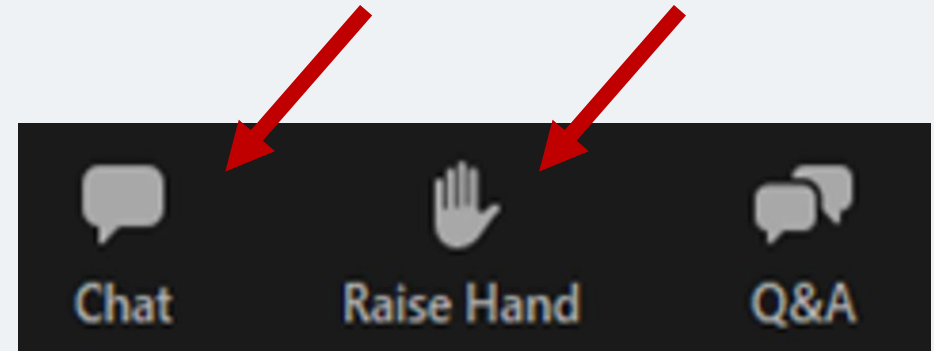


Waterscape Rebate
Program



Open Discussion

- Use the chat or click 'Raise Hand' in the Zoom meeting controls.
- We will call on participants in the order received.
- Please unmute and share:
 - Your Name
 - Any Relevant Background
 - Your Question/Comment



Stay Connected!

Energy

Alyssa Way, Sustainability Planning Division

Alyssa.Way1@sdcounty.ca.gov

(619) 972-1176

Built Environment & Transportation

Chad Spoon, Sustainability Planning Division

Steven.Spoon@sdcounty.ca.gov

(619) 510-2291



@SDCoSustainable



@SDCountySustainable



@SDCountySustainable

CAP Projects Website:

<https://bit.ly/CAPPROJECTS>

Subscribe to CAP e-Newsletter:

