



County of San Diego

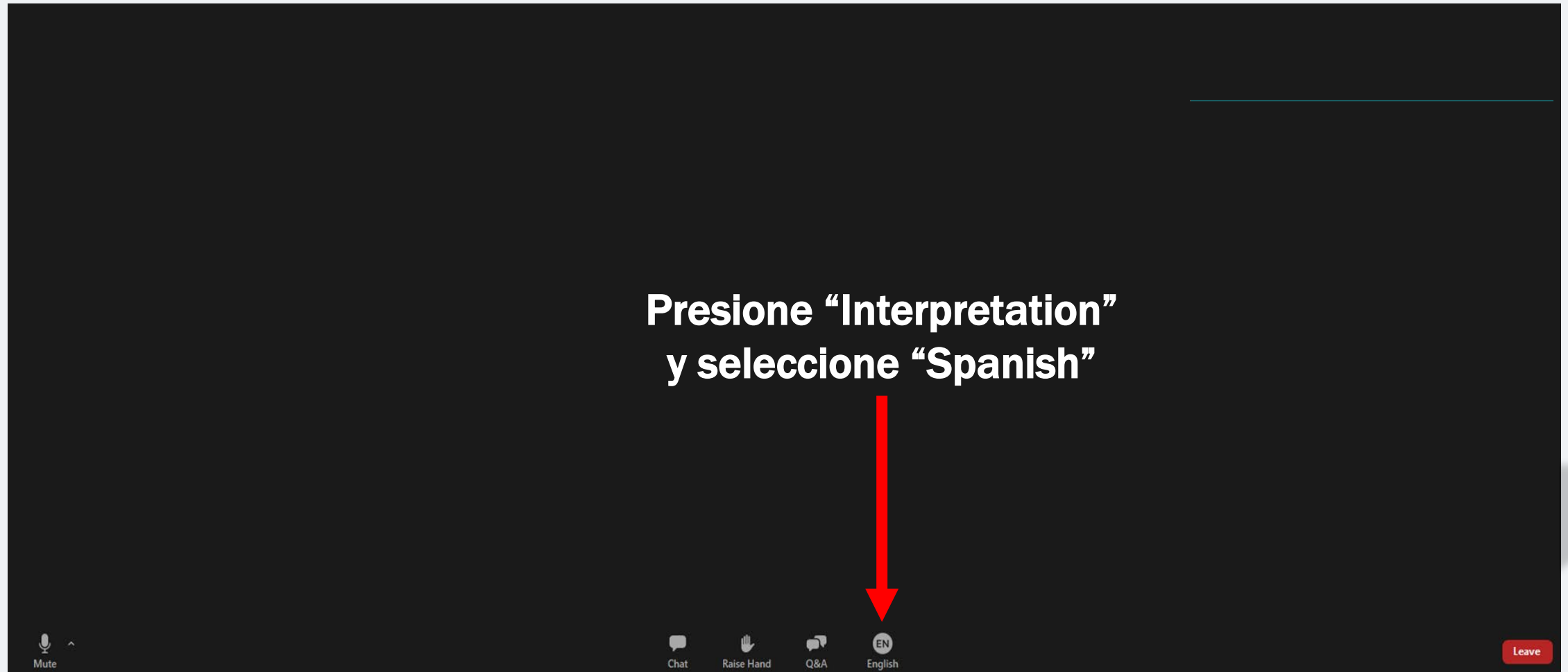
# Climate Action Plan Update Measure Development Workshop Agriculture/Conservation

Public Workshop  
September 29, 2021



# Traducción simultánea en español

Si necesita traducción simultánea:



# Agenda:

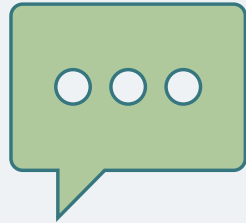
- Workshop logistics
- Where Agriculture/Conservation emissions come from
- Actions that reduce greenhouse gas (GHG) emissions
- Help us create an equitable, net-zero vision



# How to participate

?

Zoom Comments/Questions? Send message using Q&A



Submit Comments/ Questions  
During the Meeting



Having Issues With Zoom  
During The Meeting?

Use the Q&A feature at the bottom  
of your screen

Email: [CAP@sdcounty.ca.gov](mailto:CAP@sdcounty.ca.gov)

# Zoom meeting controls - desktop

?

Zoom Comments/Questions? Send message using Q&A

**Use Q&A window to  
send comments/  
questions**

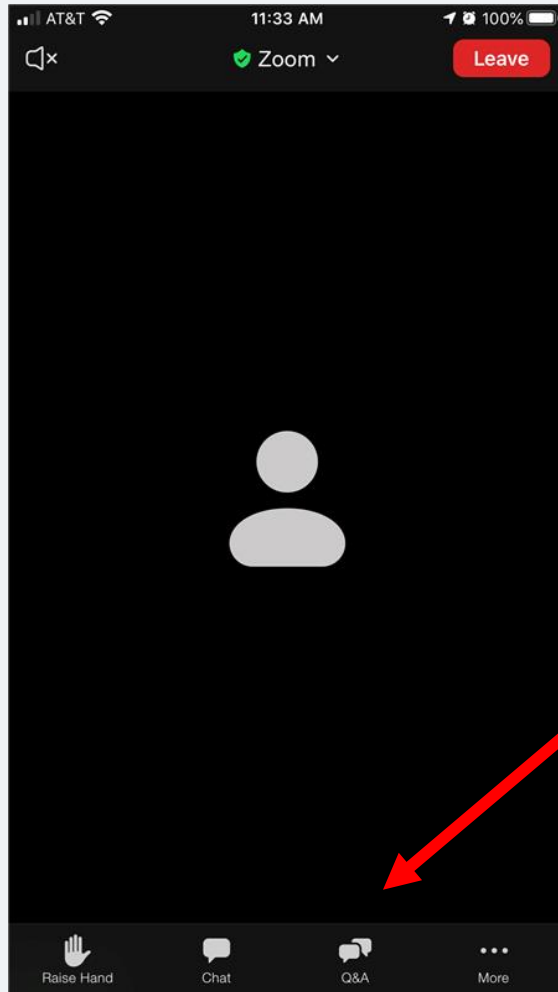
**Send questions to  
everyone or  
choose your  
recipient here**

Type your question here...

# Zoom meeting controls – mobile device

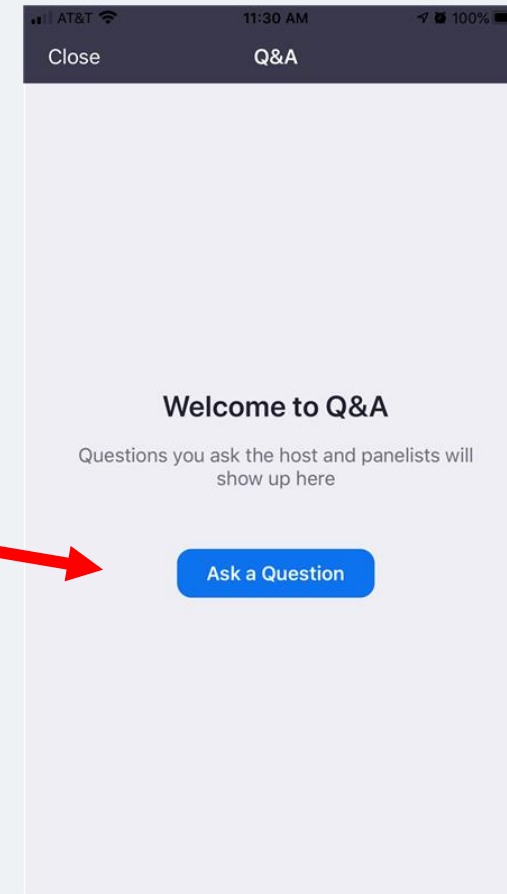
?

Zoom Comments/Questions? Send message using Q&A



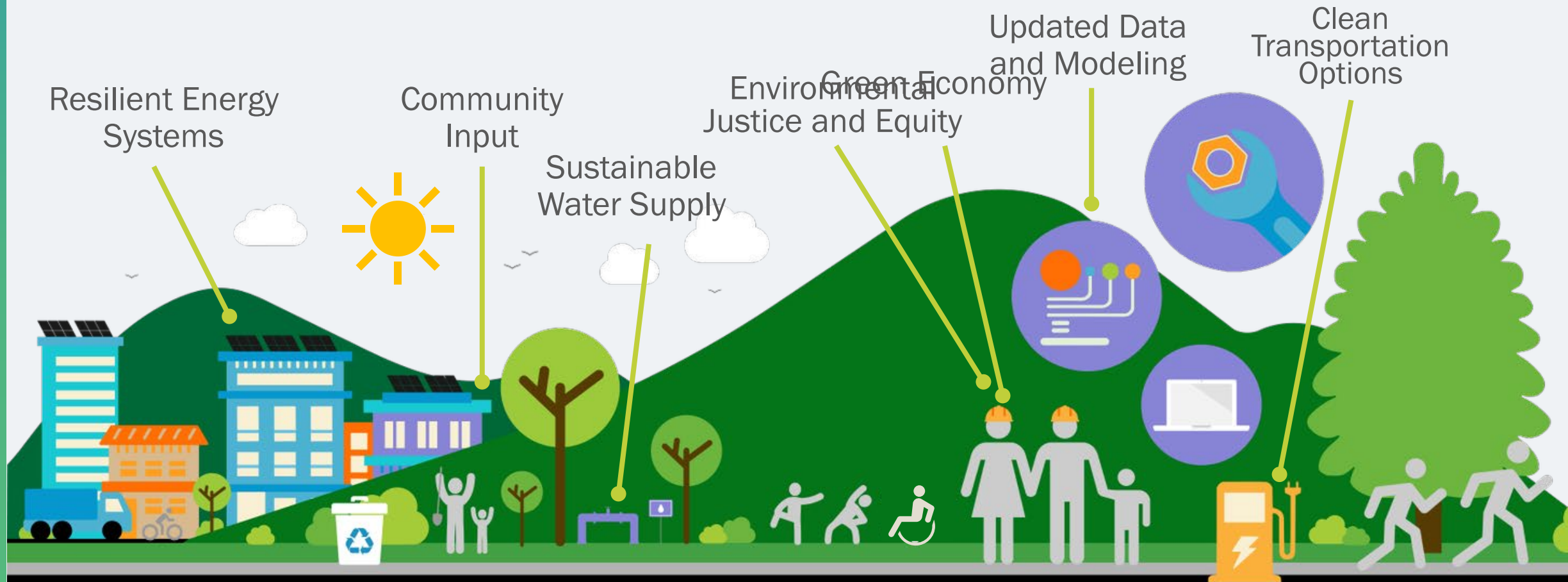
First click,  
“More”

Access the  
Q&A window  
to send  
comments/  
questions



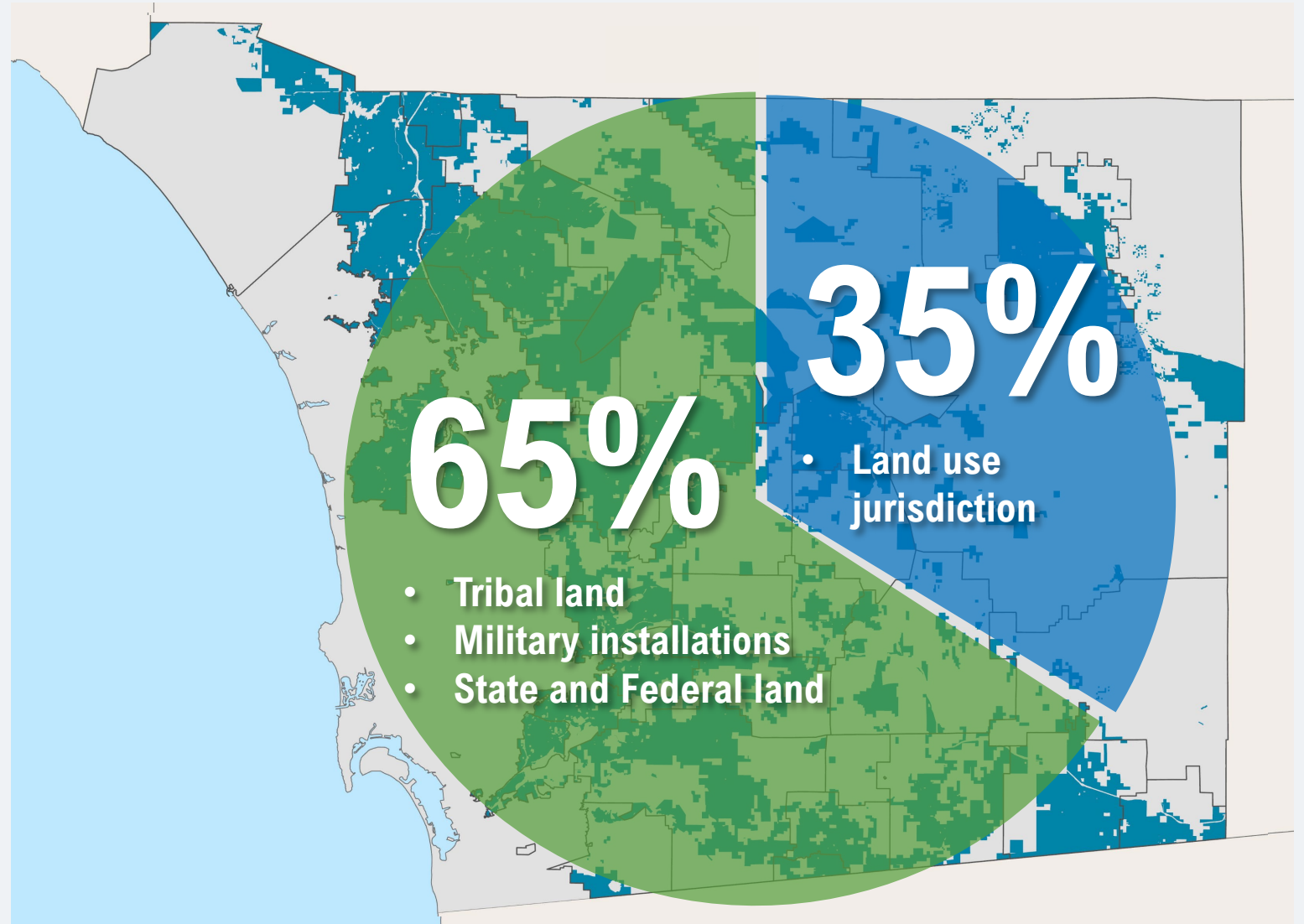
7

7



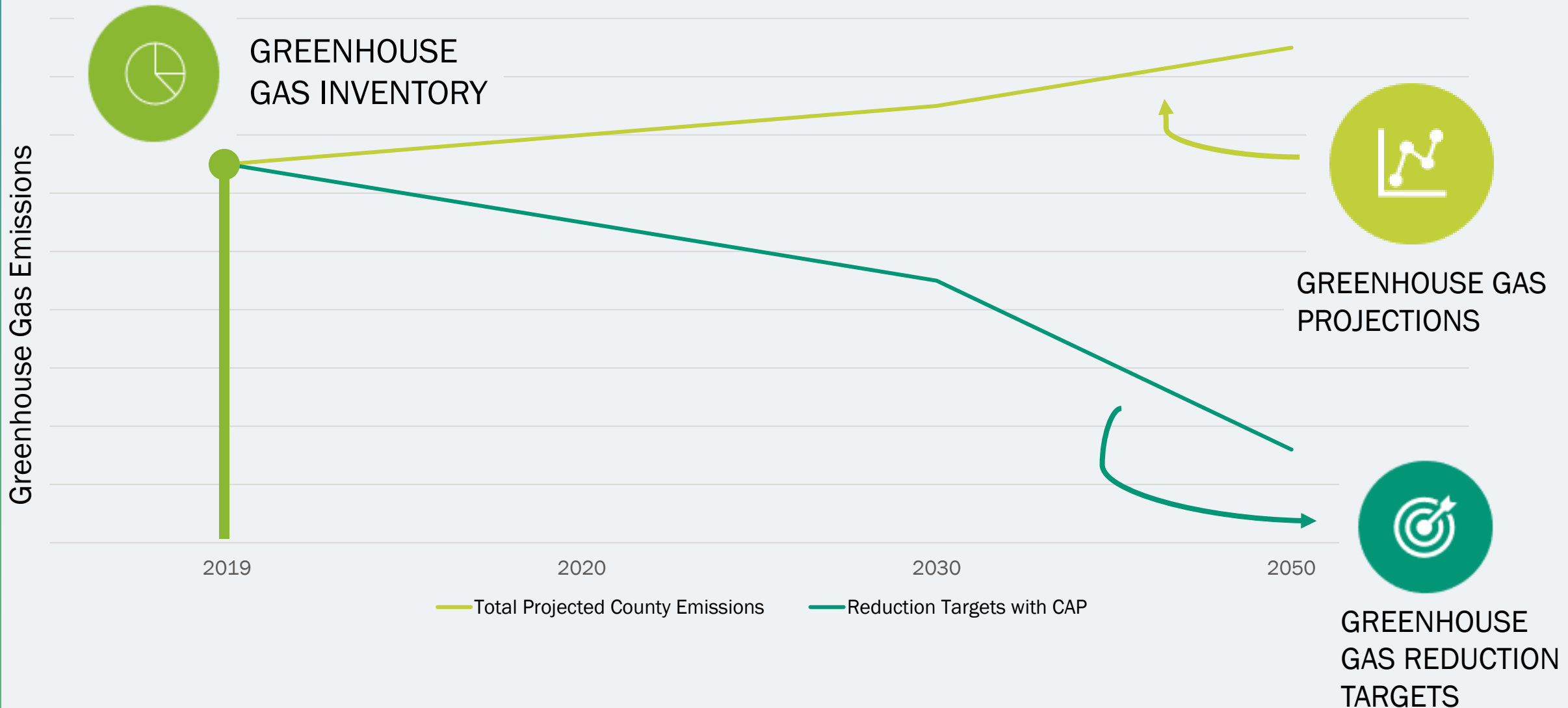
# County of San Diego General Plan

- 2011 General Plan reduced residential capacity by 15%
- Concentrates 80% of dwelling unit capacity closest to cities
- County area: 2.9 million acres
- Unincorporated area: 2.2 million acres
- Land use jurisdiction over 772,239 Acres or 35%

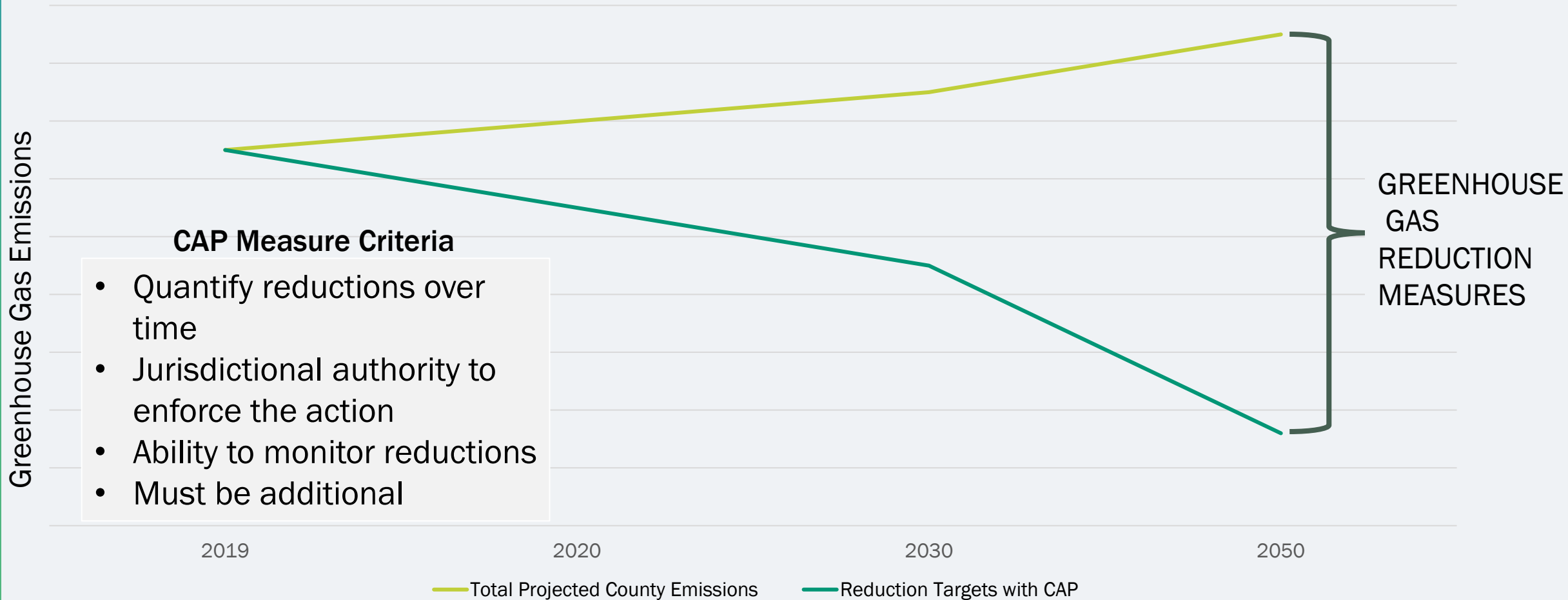




# CAP Update project components



# CAP Update project components



# CAP Update measure development

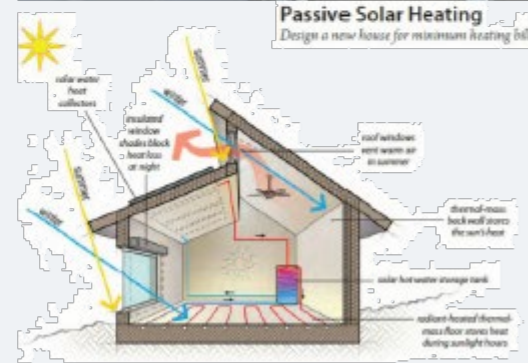
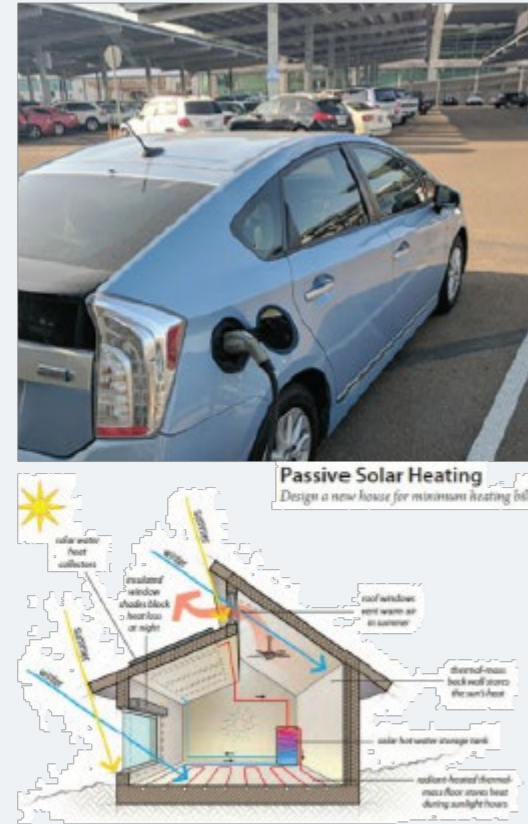
**Avoid**



**Remove**

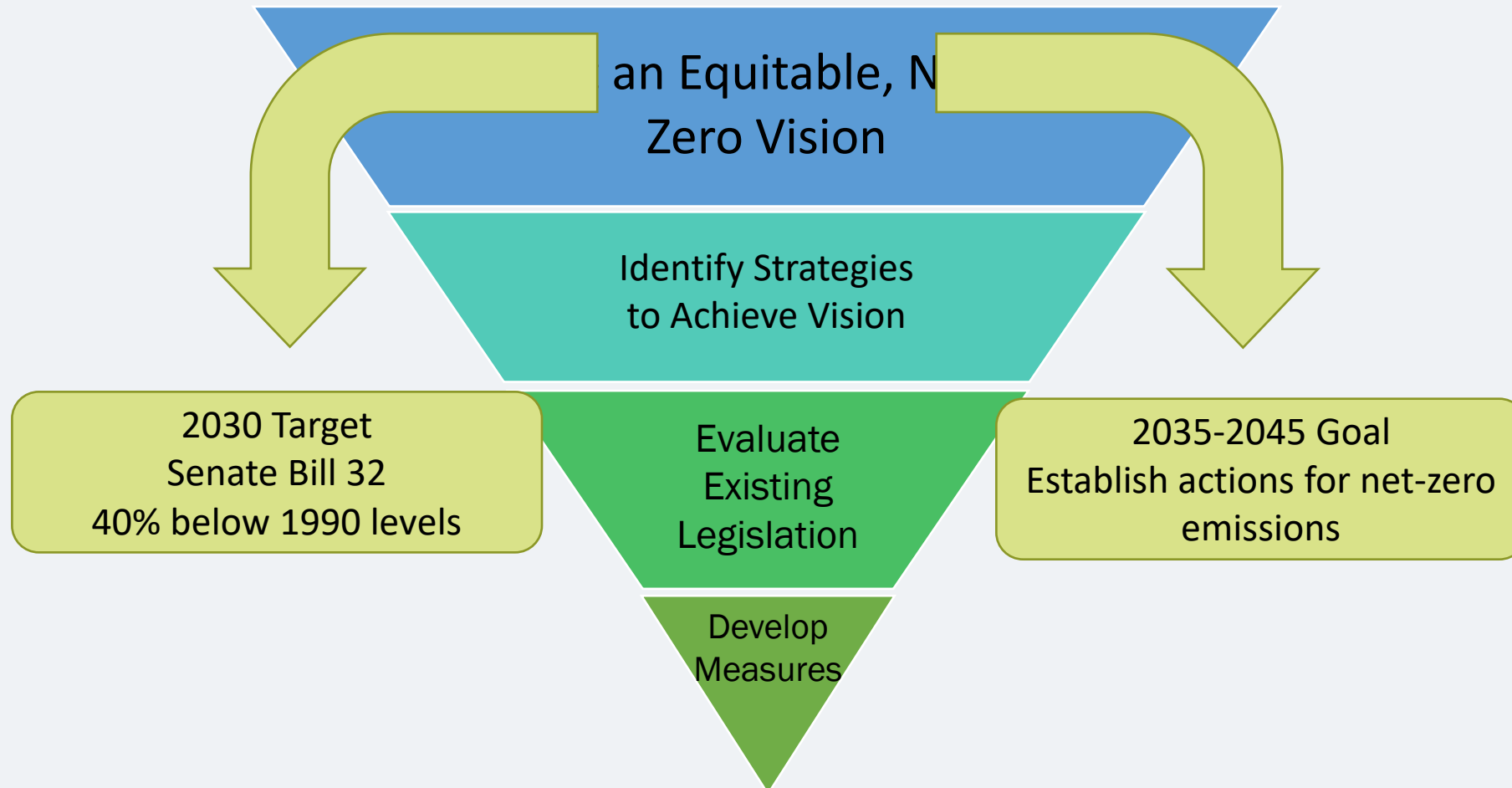


**Reduce**

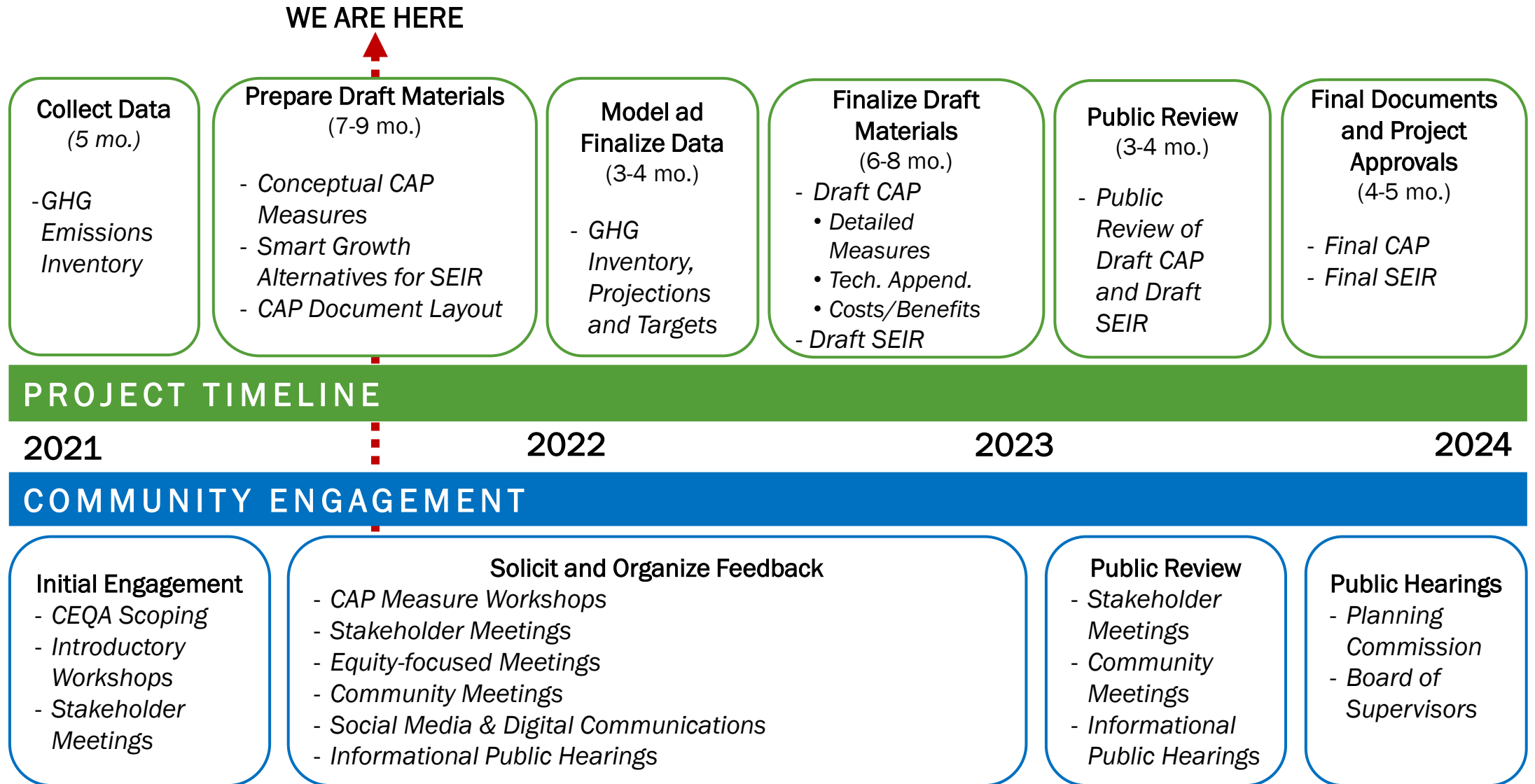


# CAP Update measure development

## Measure Development Approach



# Project Status – CAP Update Timeline



**Help us create a vision:  
Agriculture/Conservation**

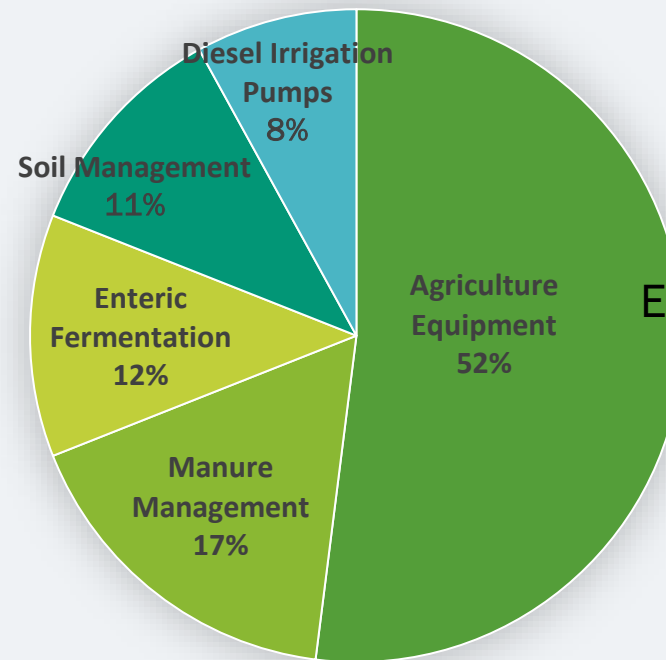
---

# Understanding Agriculture/Conservation Emissions

## 2018 CAP Emissions Inventory

## CAP Update Emissions Inventory

Breakdown of Emission Sources from the Agriculture Sector (2014)



- Emission Sources
- Ag Equipment
  - Manure Management
  - Enteric Fermentation
  - Soil Management
  - Diesel Irrigation Pumps

### Emission Sinks (Carbon Storage)

- Soil
- Plants/Trees
- Crops

# Where Agriculture/Conservation Emissions Come From



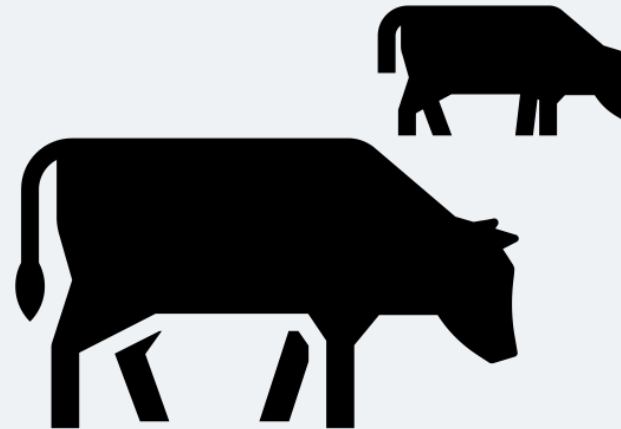
Manure Management



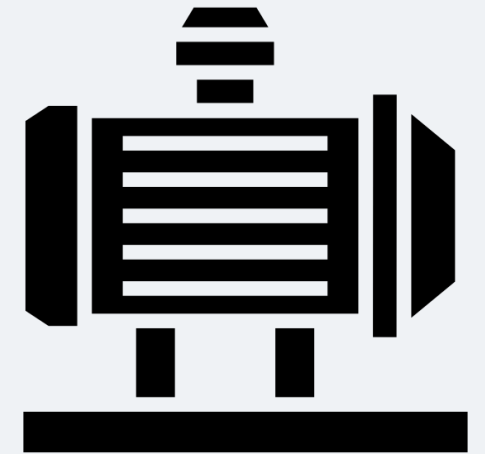
Soil Management



Agricultural Equipment



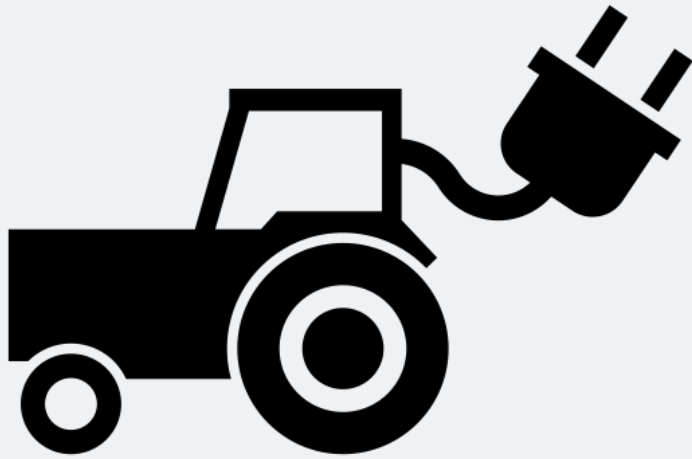
Enteric Fermentation



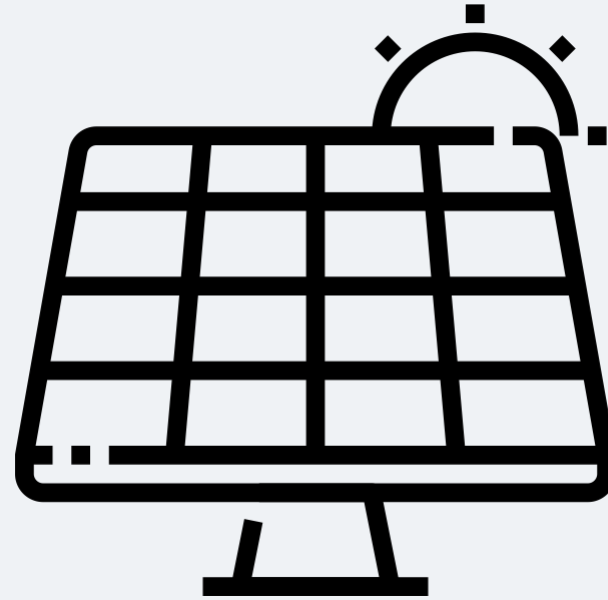
Diesel Irrigation Pumps



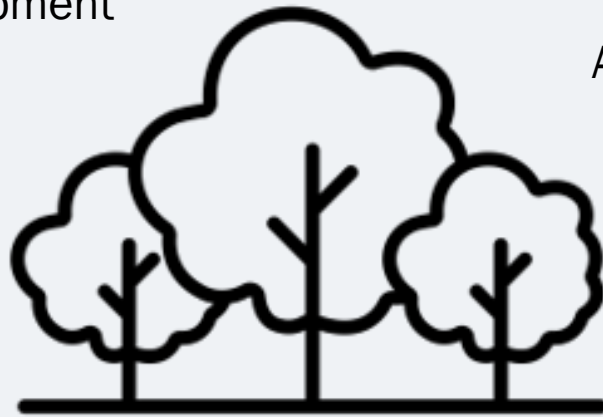
# Addressing Agriculture/Conservation Emissions



Electric Farm Equipment



Alternative/Renewable  
Energy Sources



Residential and County  
Tree Planting



Carbon Farming

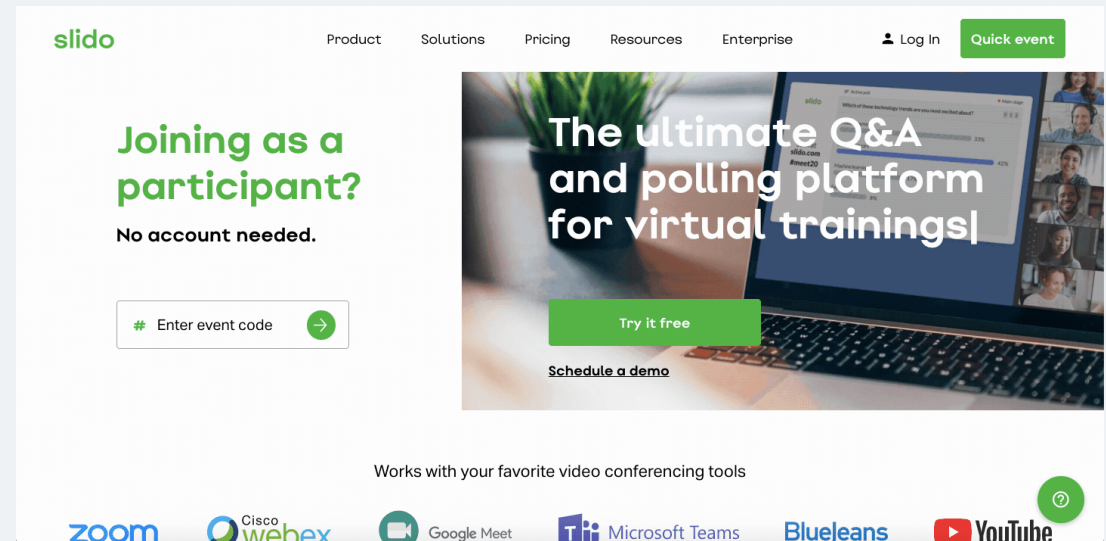
# Interactive polls using Slido

To Participate:

- Scan QR Code

OR:

1. Open slido.com in your browser
2. Type in the event code:  
**741 333** to the event code box
3. Wait to be re-directed to the event





What should be considered for the Agriculture/Conservation sector to achieve a net-zero emissions future? / ¿Qué se debe considerar para que el sector de Agricultura y Conservación logre un futuro de cero emisiones netas?

slido



What should NOT be considered for the Agriculture/Conservation sector? / ¿Qué NO se debe considerar para el sector de Agricultura y Conservación?

① Start presenting to display the poll results on this slide.



How can equity be considered for the agriculture/conservation sector, while still achieving net-zero emissions? / ¿Cómo se puede considerar la equidad para el sector de Agricultura y Conservación, sin dejar de lograr cero emisiones netas?

# slido



What else should be considered related to equity? / ¿Qué más se debe considerar en relación con la equidad?

① Start presenting to display the poll results on this slide.

# slido



Is there anything else that should be considered for the agriculture/conservation sector? / ¿Hay algo más que deba considerarse para el sector de Agricultura y Conservación?

① Start presenting to display the poll results on this slide.

# Contact information & next steps

- Email: [CAP@sdcounty.ca.gov](mailto:CAP@sdcounty.ca.gov) ; Phone: 619-323-6462
- Visit the County's CAP Website for project information and to receive automatic email updates about events and milestones

[www.sandiegocounty.gov/sustainability](http://www.sandiegocounty.gov/sustainability)





# Public comment



WE WANT TO HEAR FROM  
YOU!



PLEASE SHARE  
ADDITIONAL COMMENTS.

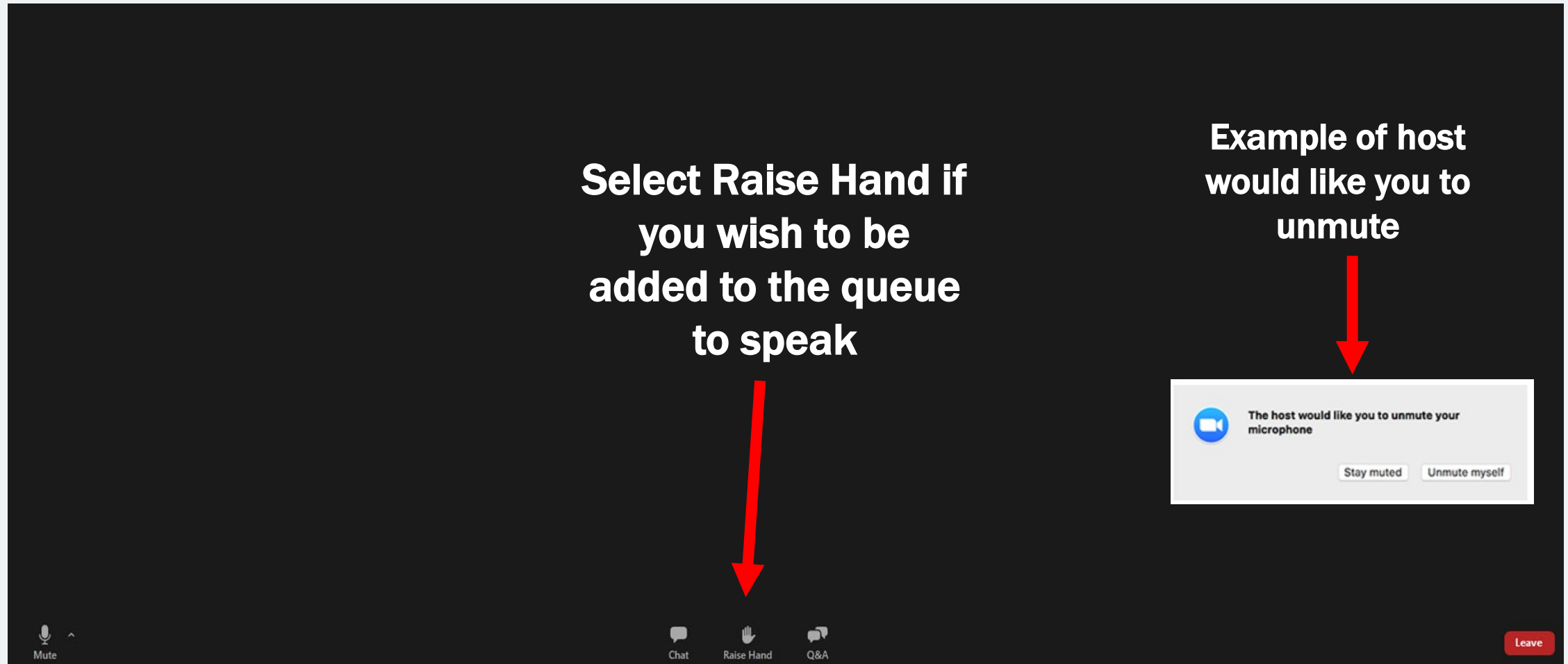


ASK ANY QUESTIONS.

# Providing public comments by phone

- Press Star (\*) 9 to indicate you would like to speak
- Listen for the message: “The host would like you to unmute your microphone. You can press Star (\*) 6 to unmute”
- When you are done with your comment, please press Star (\*) 6 to re-mute

# Providing public comments via zoom



# Public comment



WE WANT TO HEAR FROM  
YOU!



PLEASE SHARE  
ADDITIONAL COMMENTS.



ASK ANY QUESTIONS.



# County of San Diego

## Thank you!



Public Workshop  
September 29, 2021