



County of San Diego

Native Plant Landscaping Policy Options



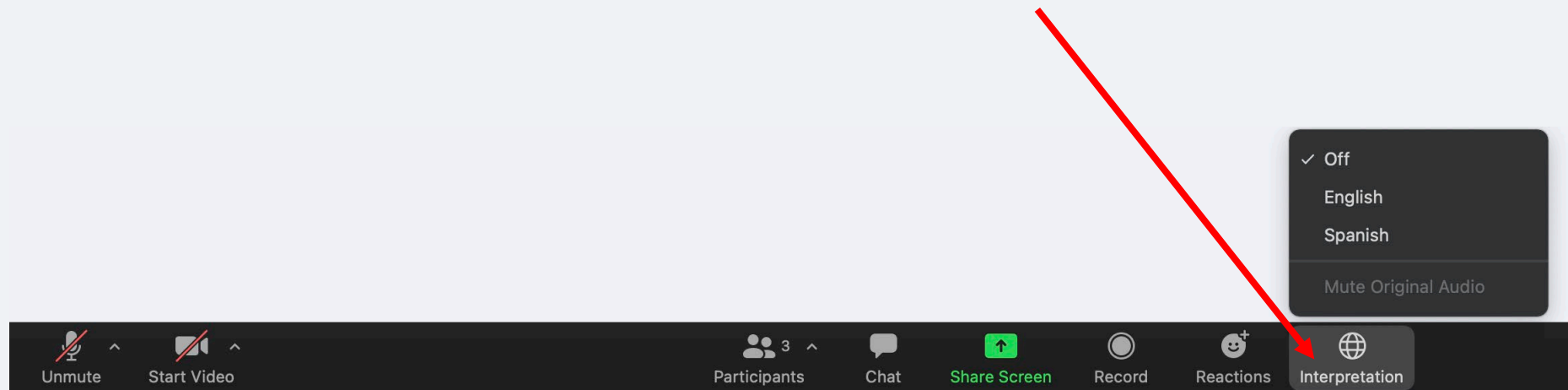
Public Meeting
November 3, 2021



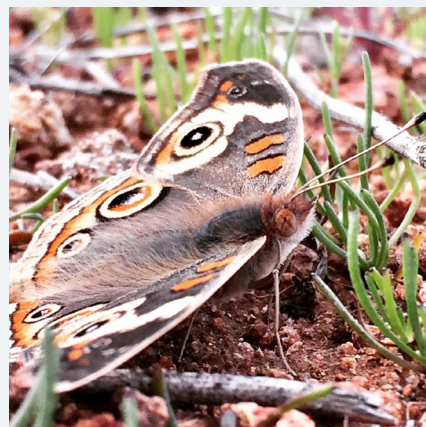
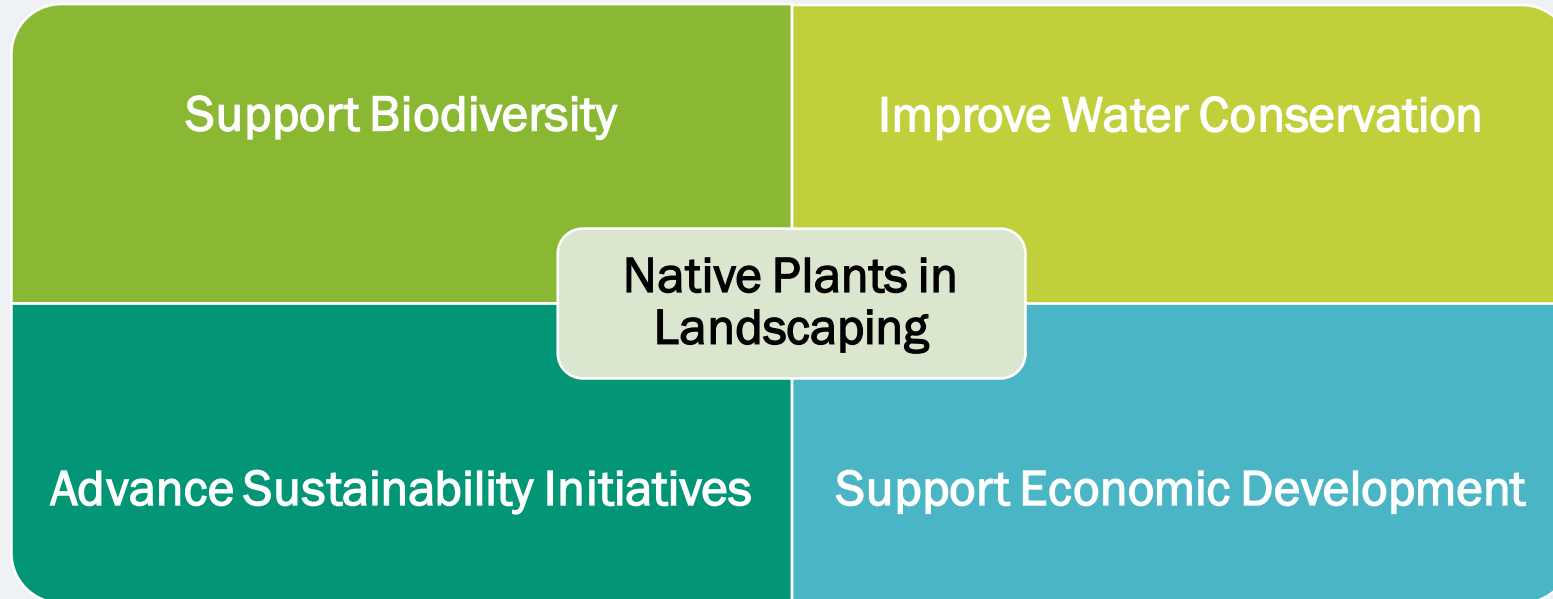
Traducción simultánea en español

Si necesita traducción simultánea:

Presione “Interpretation” y seleccione “Spanish”

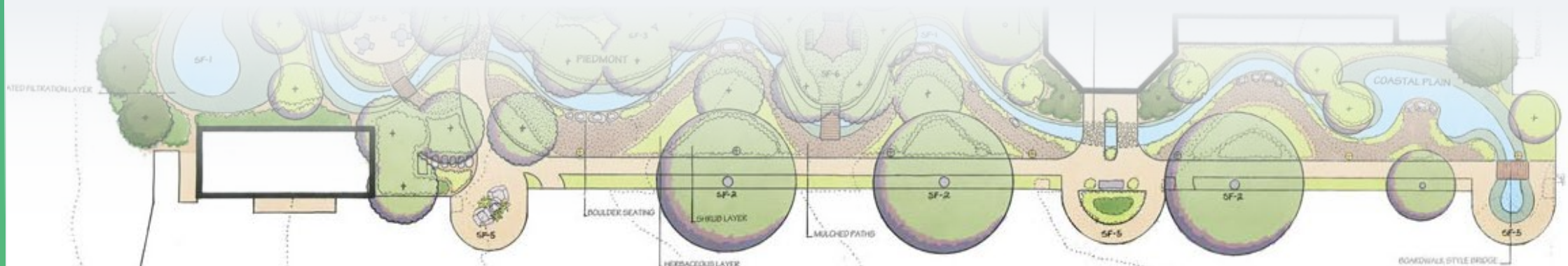


Welcome and Introduction



Agenda

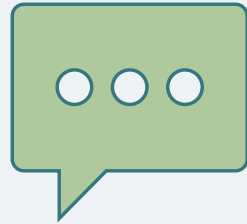
- Meeting Logistics
- Project Introduction
- Project Approach
- Public Input: Polls & Q/A



How to participate

?

Zoom Comments/Questions? Send message using Chat feature



Submit Comments/ Questions
During the Meeting



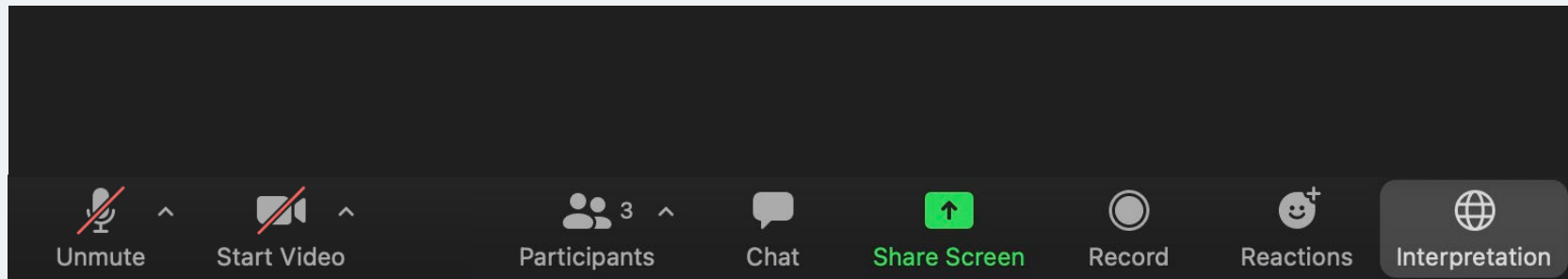
Having Issues With Zoom
During The Meeting?

**Use the Chat feature at the bottom
of your screen**

Zoom meeting controls - desktop

?

Zoom Comments/Questions? Send message using Chat feature



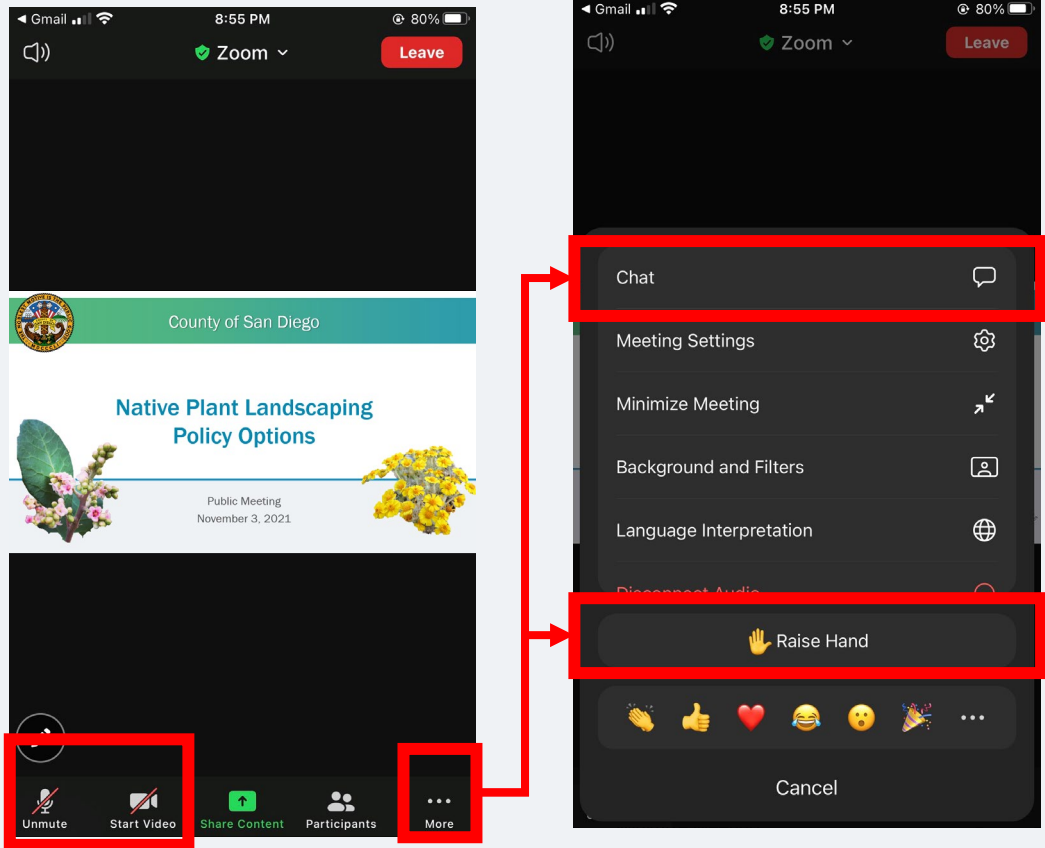
Microphone and
Video On/Off

Ask Questions
through Chat

Raise Hand
in Reactions

Zoom meeting controls – mobile device

? Zoom Comments/Questions? Send message using Chat feature



Board of Supervisors Direction

- Collaborate with the San Diego Regional Biodiversity Working Group
- Develop options for a comprehensive Native Plant Landscaping Policy for both public and private property including:
 - Guidelines for including native plants in landscaping
 - Reasonable requirements for County facilities and new developments
 - Accommodations for recreational and other socially desirable uses
 - Incentives for retrofits
 - Equity-based resources and training to ensure diverse participation among landscaping professionals and residents
- Engage with a diverse range of interested stakeholders and the public in the development of Board options
- Return with **options** for a new San Diego County Native Plant Landscaping Policy



Biodiversity Working Group

- Comprised of:

- Ecologists
- Landscape design & industry professionals
- Educators
- Others

- Focus areas:

- Design & Education
- Ecology
- Sustainability
- Industry



Project Approach



Outreach and Engagement

- Focused stakeholder engagement
- Large-format virtual public meetings



Collaborate with Working Group

- Attend general meetings



Develop Policy Options

- Requirements
- Education
- Incentives

Project Timeline

WE ARE HERE



Initial Outreach

- Stakeholder Meetings
- Coordination with Working Group

Gather and Prioritize Ideas

- Coordination with Working Group
- Large format Meeting
- Stakeholder Meetings
- Community Meetings

Feedback on Draft Options

- Large format Meeting
- Stakeholder Meetings

Public Hearing -Board Hearing

COMMUNITY ENGAGEMENT

Spring 2021

Spring 2022

PROJECT TIMELINE

Project Scoping

Draft options development

Draft Options available for public feedback

Final Options for Board consideration and approval

Interactive polls using Poll Everywhere

To Participate:

- Scan QR Code

OR:

1. Open pollev.com/SDCoSustainable681 in your browser (Chrome, Firefox, or Edge)
2. Enter your name or click Skip
3. Wait to be re-directed to the event



What is your relationship to the County of San Diego? / ¿Cuál es su relación con el condado de San Diego?

Unincorporated area resident / Residente no incorporado en el área

Incorporated city resident / Residente incorporado en la ciudad

Community leader/organizer / Líder/organizador de la comunidad

Community Planning Group / Sponsor Group member / Miembro del Grupo de Planificación Comunitaria / Grupo patrocinador

Environmental advocate / Defensor del medioambiente

Farmer / Horticulturist / Agricultor / Horticultor

Landscaping Professional / Profesional del paisajismo

Other / Otro

Which of the following outcomes are the most important to you? Order your response from most important to least. / ¿Cuáles de los siguientes resultados son los más importantes para usted? Ordene sus respuestas de la más importante a la menos importante.

Preserve biodiversity and native habitat /
Preservar la biodiversidad y el hábitat natural

Provide drought tolerance / Proporcionar
tolerancia a la sequía

Improve fire resistance and resilience / Mejorar
la resistencia y la resiliencia al fuego

Increase the supply of locally produced native
plant nursery stock / Aumentar el suministro de
plantas nativas de vivero producidas localmente

How would you prefer the County achieve the outcomes of this project? Choose your top three. / ¿Cómo le gustaría que el condado lograra los resultados de este proyecto? Elija las tres primeras opciones.

Provide incentives for homeowners to replace landscaped areas with native plants / Incentivando a los propietarios a reemplazar las zonas ajardinadas por plantas nativas

Provide support for nurseries to increase the supply of native plants / Apoyando a los viveros para que aumenten la oferta de plantas nativas

Create requirements for County facilities to use native plants / Creando requisitos para que las instalaciones del condado usen plantas nativas

Create requirements for residential properties to use native plants / Creando requisitos para que las propiedades residenciales usen plantas nativas

Create requirements for non-residential properties to use native plants / Creando requisitos para que las propiedades no residenciales usen plantas nativas

Develop educational resources for residents to learn how to use native plants / Desarrollando recursos educativos para que los residentes aprendan a usar las plantas nativas

Develop training programs for landscape professionals to support the use of native plants / Desarrollando programas de capacitación para que los profesionales del paisajismo apoyen el uso de plantas nativas

What equity-based resources could be considered to ensure diverse participation among landscaping professionals and residents? / ¿Qué recursos basados en la equidad se podrían tener en cuenta para garantizar una participación diversa entre los profesional

What ideas do you think the County should NOT consider to increase the use of native plants in landscaped areas? / ¿Qué ideas cree que el condado NO debería tener en cuenta para aumentar el uso de plantas nativas en zonas ajardinadas?

What are other ideas do you think the County should consider to increase the use of native plants in landscaped areas? / ¿Qué ideas cree que el condado debería tener en cuenta para aumentar el uso de plantas nativas en zonas ajardinadas?

Contact Information

- Email: MeghanKelly@sdcounty.ca.gov ; Phone: 619-323-6462
- Visit the County's Sustainability Website for project information
<https://www.sandiegocounty.gov/content/sdc/sustainability/projects/native-plants-policy.html>



Public comment



WE WANT TO HEAR FROM
YOU!



PLEASE SHARE
ADDITIONAL COMMENTS.



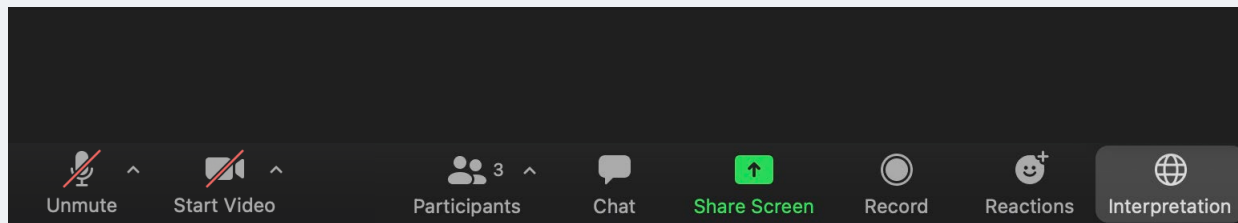
ASK ANY QUESTIONS.

Providing public comments by phone

- Press Star (*) 9 to indicate you would like to speak
- Listen for the message: “The host would like you to unmute your microphone. You can press Star (*) 6 to unmute”
- When you are done with your comment, please press Star (*) 6 to re-mute

Providing public comments via zoom

Desktop

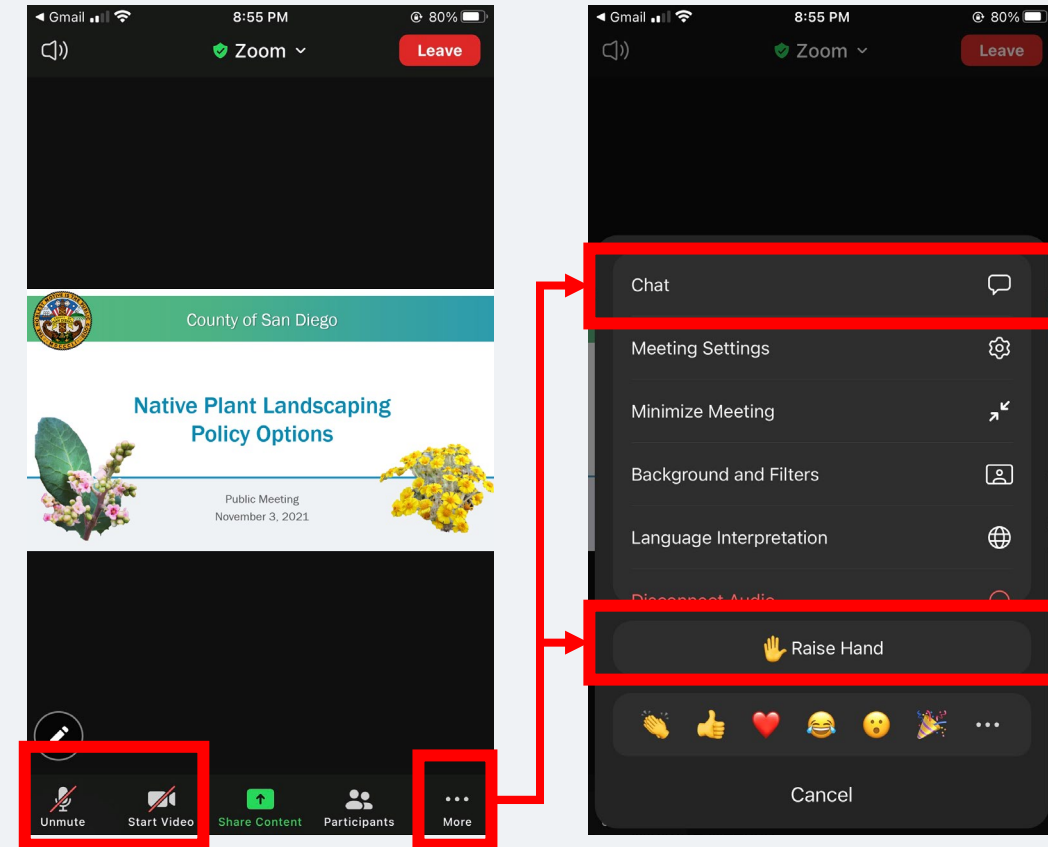


Microphone and Video On/Off

Ask Questions through Chat

Raise Hand in Reactions

Mobile



Zoom Comments/Questions? Send message using Chat feature

Public comment



WE WANT TO HEAR FROM
YOU!



PLEASE SHARE
ADDITIONAL COMMENTS.



ASK ANY QUESTIONS.



County of San Diego

Thank You!



Public Meeting
November 3, 2021

