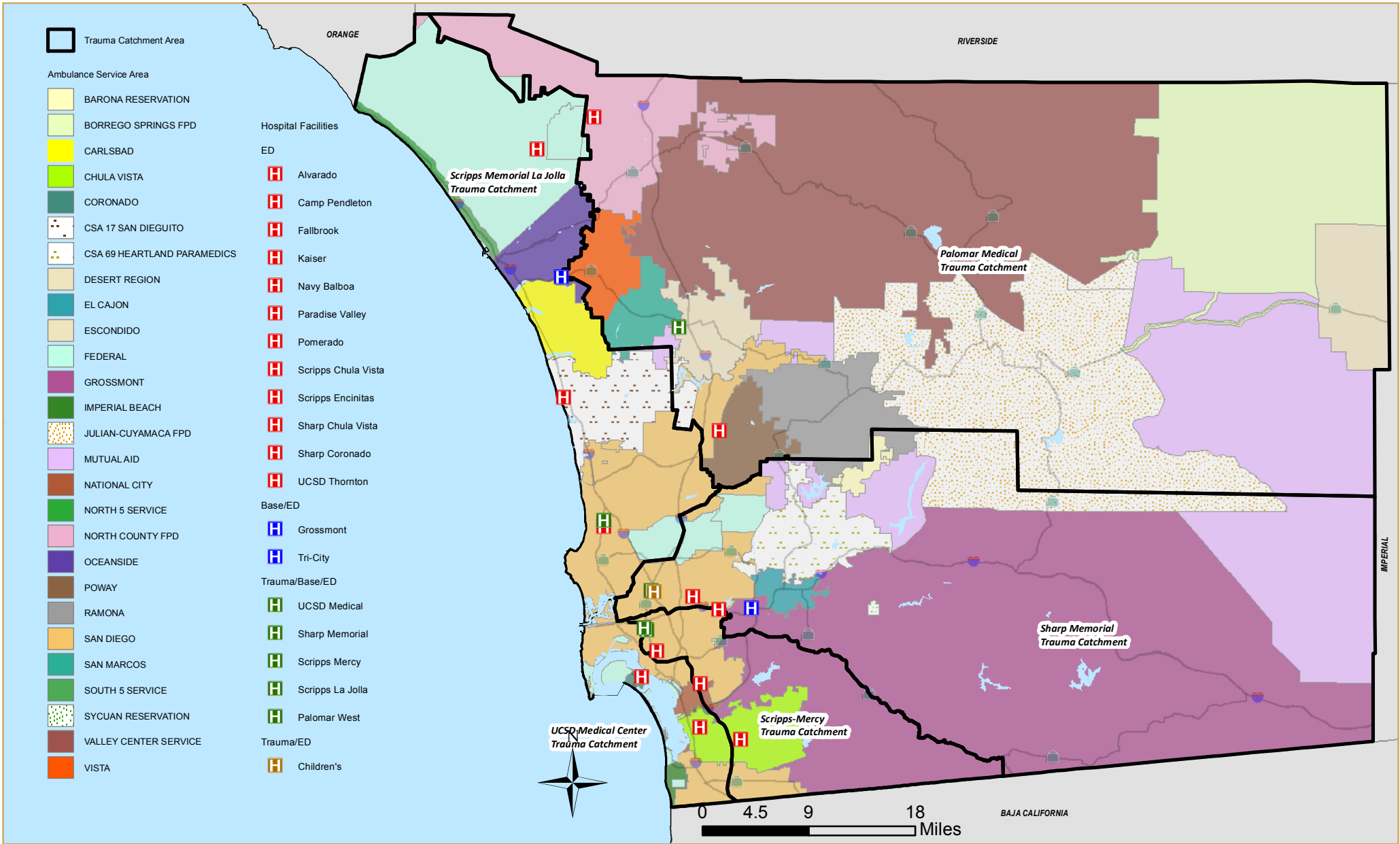


County of San Diego Emergency Medical Resources Hospitals, Trauma Catchment Areas, and Ambulance Service Areas



Map Date: 2012
 Contact: Isabel Corcos or Leslie Ray,
 County of San Diego Emergency Medical Services
 619.285.6429

NAD_1983_StatePlane_California_VI_FIPS_0406_Feet,
 D_North_American_1983, Foot_US