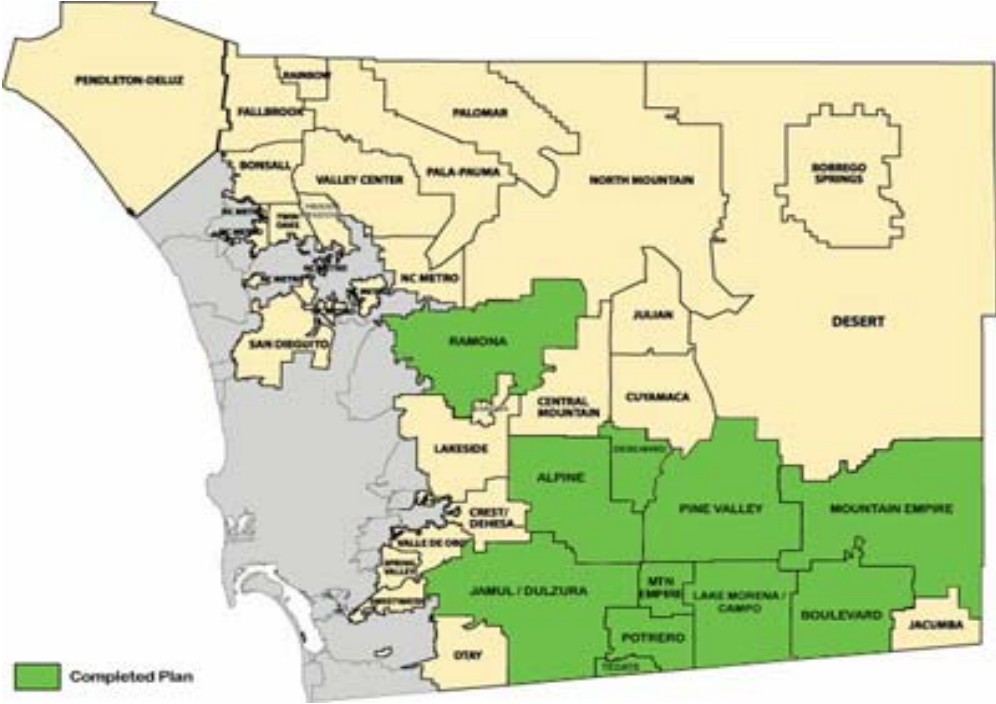


Ramona Community Planning Area COMMUNITY PROTECTION AND EVACUATION PLAN October 2005



American Red Cross
San Diego and Imperial Counties



SAN DIEGO COUNTY

**RAMONA COMMUNITY PROTECTION
& EVACUATION PLAN**

RAMONA COMMUNITY PLANNING AREA

October 2005
Revised September 2006

RAMONA COMMUNITY PROTECTION & EVACUATION PLAN INTRODUCTION

Introduction

The Ramona Community Protection and Evacuation Plan is a collaboration between the following groups and agencies:

- **Ramona Community Planning Group**
- **Ramona Outback Amateur Radio Service (ROARS)**
- **Ramona Fire Department/CDF**
- **Sheriff's Department**
- **Department of Animal Services**
- **American Red Cross**
- **County Office of Emergency Services.**

It is intended that the Ramona Community Protection and Evacuation Plan will be updated annually. Questions, comments, and suggestions can be forwarded to the Ramona Community Planning Group at 15873 Hwy 67, Ramona, California, 92065, or to kmansolf@gmail.com .

RAMONA COMMUNITY PROTECTION & EVACUATION PLAN
TABLE OF CONTENTS

Contents

Section A:	Community Overview & Conditions Ramona Municipal Water District Boundary Map Community Planning Area Boundary Map
Section B:	Community History Fire History Map
Section C:	Community Stakeholders
Section D:	Mitigation Strategy
Section E:	Community Protection & Evacuation Plan Sheriff's Dept., Ramona Command Zone Map Sheriff's Dept., Evacuation Route Map
Section F:	Fire Agency Response Plans
Section G:	Law Enforcement Response Plans
Section H:	Animal Services
Section I:	Mass Casualty Plan
Section J:	Sheltering
Section K:	Important Phone Numbers & Contact Information
Section K-1:	Radio Communications
Section L:	Fire Protection by Geographic Subregion
Section N:	Road Access Standards
Section P:	Logistics
Section Q:	Vegetation Management Websites

RAMONA COMMUNITY PROTECTION & EVACUATION PLAN
SECTION A – COMMUNITY OVERVIEW & CONDITIONS

Ramona Overview and Conditions

Ramona is characterized by steep slopes, rocky terrain, rolling topography, deep canyons, high valleys, and expanses of grassland. The native vegetation is highly combustible during the long, seasonal dry periods. Winds commonly occur from the west. Although strong winds from the west and south can be a problem during a fire, the dry, strong north and east winds (Santa Anas) are more problematic.

The most densely populated area of Ramona is the Town Center and vicinity. Development spreads out in concentric circles from the Town Center with large clusters of homes in the Mt. Woodson planned development at the far western side of Ramona; Fernbrook in the Mussey Grade area to the south; the Holly Oaks, San Diego Country Estates and Rancho San Vicente planned developments to the south; and the Oak Tree Ranch modular home park north east of the Town Center. There are many smaller planned developments dispersed throughout the Planning Area. The Barona Indian Reservation borders Ramona to the south. The Cleveland National Forest borders portions of the north side of Ramona as well as the San Diego Country Estates and vicinity to the east. Large areas of open space are often directly adjacent and integrated into developed areas. Ramona has twenty biological Resource Conservation Areas.

The portion of the Ramona Planning Area east of Magnolia is outside of the Ramona Municipal Water District (RMWD) boundaries. Parcels are larger and the land is more rolling. Vegetation is less dense on the east side of Ramona which extends to the Witch Creek area. Agricultural activity, such as grazing, is common throughout the grasslands in the flatter areas. There are avocado groves on the west side of Ramona in the Highland Valley area where an additional water system is available to agricultural growers. In many of the more rural, outlying areas of Ramona, residents are not served by the RMWD and depend on wells. Many wells have gone dry, reducing the availability of water to fight fires.

Ramona is bisected by two State highways, Hwy 67 and Hwy 78. Both have been closed due to fire and traffic accidents. Traffic congestion during the morning and evening commute can hamper the passage of emergency vehicles. Ramona has two alternate routes: Highland Valley Rd. is an alternate route to Escondido and Poway, and Wildcat Canyon Rd. through the Barona Indian Reservation is an alternate route to Lakeside. Wildcat Canyon Rd. is narrow and winding, with areas that pass through long, steep narrow canyons. Vista Ramona Rd. connects to the Old Julian Hwy and then to 3rd St., offering an alternate route from the San Diego Country Estates to Ramona, other than San Vicente Rd. All routes traverse mountainous terrain with native vegetation and would be dangerous to travel if a fire were burning in the area. Cars traveling on the roads have been a source of fire in the past.

The entire area of Ramona outside of the Town Center is vulnerable to fire. As Ramona borders undeveloped portions of other communities and the Cleveland National Forest, all of the areas bordering Ramona are also vulnerable to fire.

RAMONA COMMUNITY PROTECTION & EVACUATION PLAN
SECTION A – COMMUNITY OVERVIEW & CONDITIONS

Besides the water storage areas of Lake Ramona, Lake Sutherland, and the San Vicente Reservoir, Ramona has many ponds that can be used for water drops during a fire. Elliot Pond in the Town Center, the ponds at Mt. Woodson and the Dos Picos Park Pond are just a few of the ponds in Ramona that generally have water in them all year. There are also many seasonal ponds throughout Ramona.

Ramona has a general aviation airport, located north of the Town Center, that is part of the County regional air transportation network. The United States Forest Service (USFS) and the California Department of Forestry and Fire Protection (CDF) operate an aerial attack base at the site which is used to fight fires throughout the region.

There is the new danger posed by possible terrorist events in San Diego. A significant event could cause power outage, disease and a mass influx of people to this area in need of shelter and support.

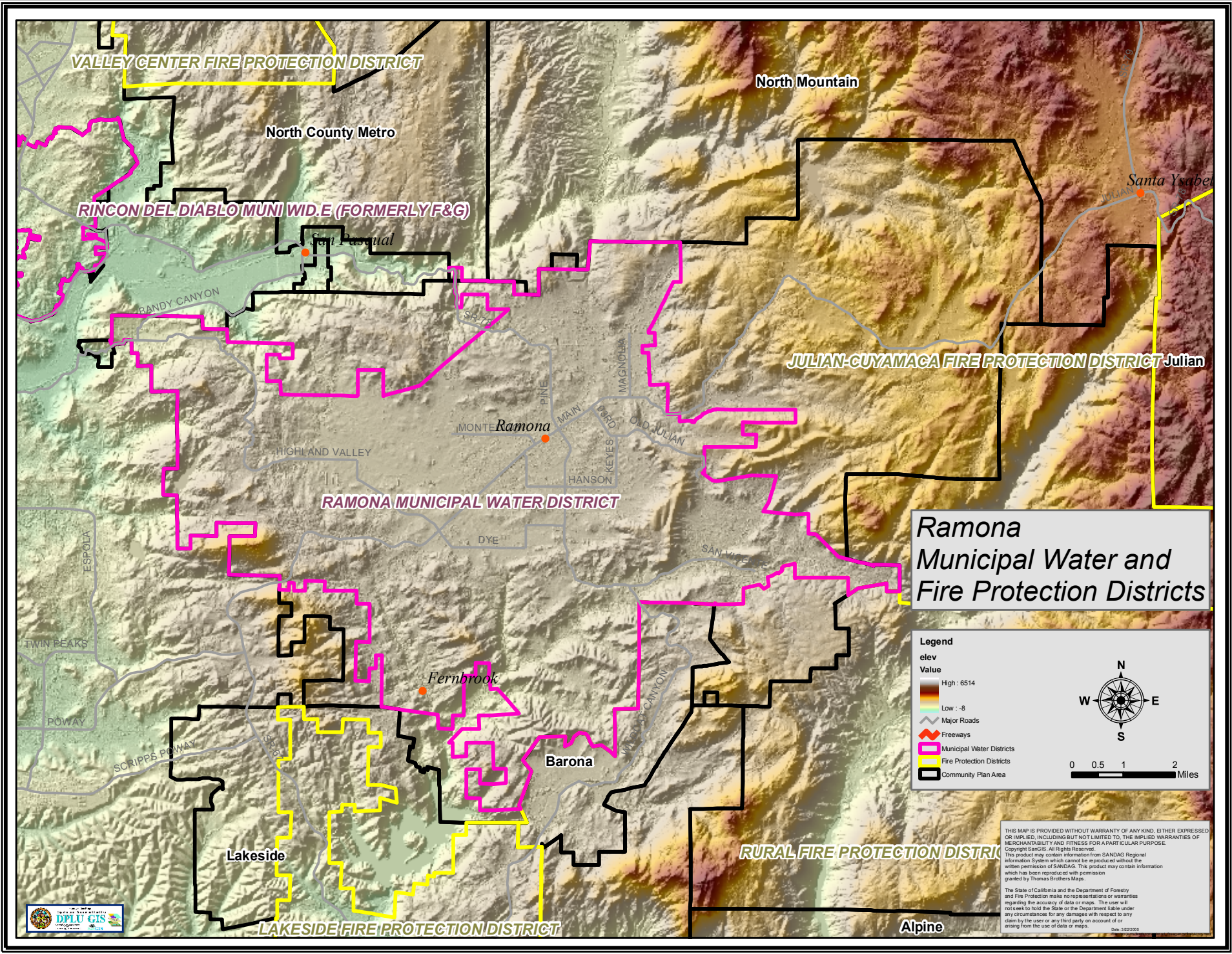
Seismic Conditions

Local

Locally, the Ramona Community Planning Area contains several faults that are classified as inferred faults. A series of parallel northwest trending faults are located in the northwest end of the Santa Maria Valley. A series of east-west trending faults are found in the San Vicente Valley and vicinity. The south side of Mt. Woodson is bordered by the Warren Canyon fault, which continues eastward along the south side of the Santa Maria Valley, located southwest of the Ramona Town Center.

Regional

On a regional scale, the Ramona Community Planning Area lies within a zone of high earthquake activity. The Elsinore fault, located approximately 14 miles to the northeast of the Town Center, and the San Jacinto fault, located 40 miles to the northeast, are San Diego County's largest known active faults and are estimated to have maximum credible earthquakes on the magnitude of 7.6, and 7.5 to 7.8 respectively, to occur every one hundred years. Because of the fairly close proximity of these faults, considerable seismic damage could occur in the area in the way of ground shaking, structural damage, and possible loss of life.



Ramona Municipal Water and Fire Protection Districts

Legend

elev
Value

- High : 6514
- Low : -8

Major Roads

Freeways

Municipal Water Districts

Fire Protection Districts

Community Plan Area

THIS MAP IS PROVIDED WITHOUT WARRANTY OF ANY KIND, EITHER EXPRESSED OR IMPLIED, INCLUDING BUT NOT LIMITED TO, THE IMPLIED WARRANTIES OF MERCHANTABILITY AND FITNESS FOR A PARTICULAR PURPOSE. Copyright SanGIS. All Rights Reserved. This product may contain information from SANDAG Regional Information System which cannot be reproduced without the written permission of SANDAG. This product may contain information which has been reproduced with permission granted by Thomas Brothers Maps. The State of California and the Department of Forestry and Fire Protection make no representations or warranties regarding the accuracy of data or maps. The user will not seek to hold the State or the Department liable under any circumstances for any damages with respect to any claim by the user or any third party on account of or arising from the use of data or maps. Date: 12/22/05



Ramona Municipal Water District

Legend

elev

Value

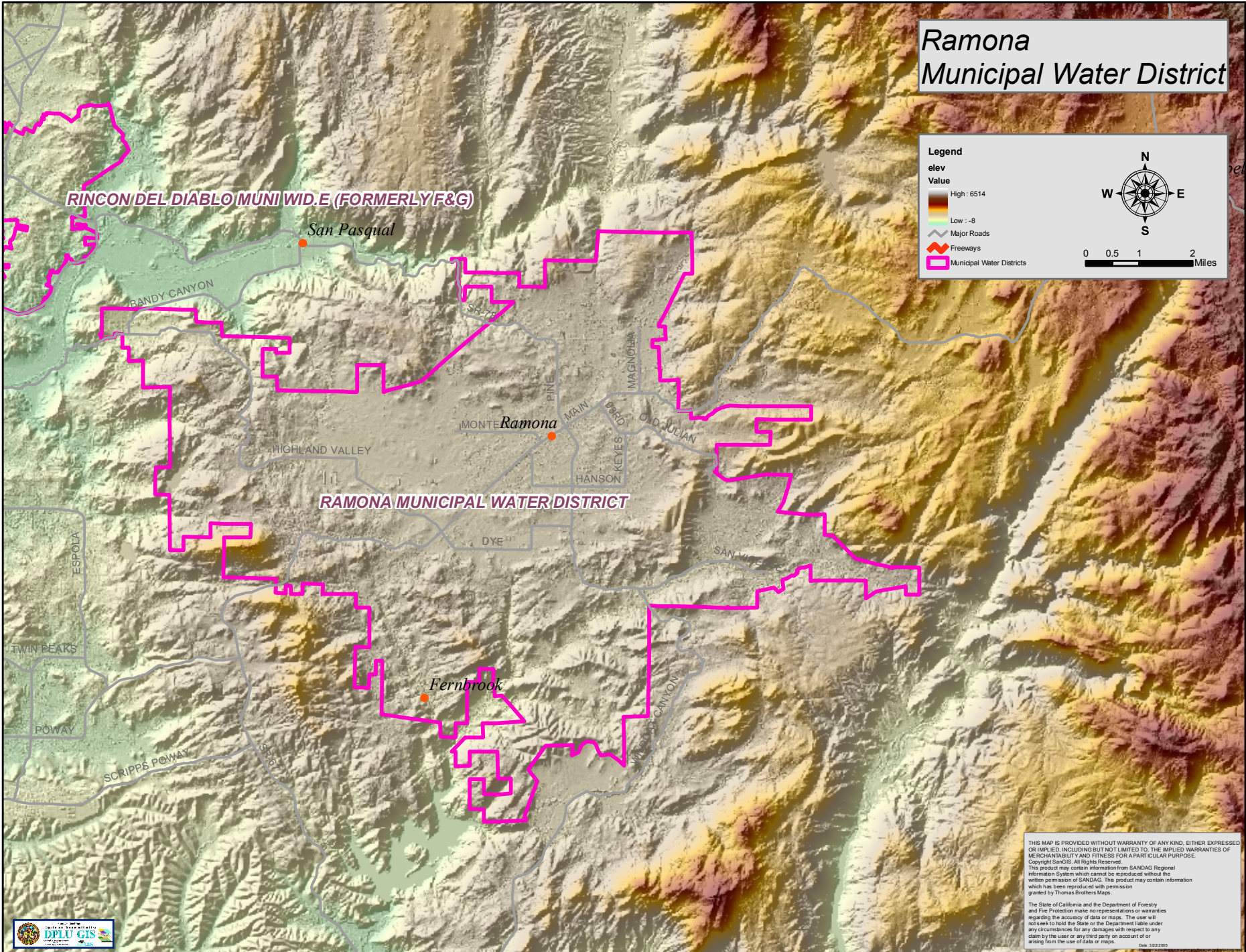
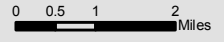
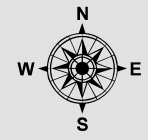
High: 6514

Low: -8

Major Roads

Freeways

Municipal Water Districts



THIS MAP IS PROVIDED WITHOUT WARRANTY OF ANY KIND, EITHER EXPRESSED OR IMPLIED, INCLUDING BUT NOT LIMITED TO, THE IMPLIED WARRANTIES OF MERCHANTABILITY AND FITNESS FOR A PARTICULAR PURPOSE. Copyright SanGIS. All Rights Reserved.

This product may contain information from SANDAG Regional Information System which cannot be reproduced without the written permission of SANDAG. This product may contain information which has been reproduced with permission granted by Thomas Brothers Maps.

The State of California and the Department of Forestry and Fire Protection make no representations or warranties regarding the accuracy of data or maps. The user will not seek to hold the State or the Department liable under any circumstances for any damages with respect to any claim by the user or any third party on account of or arising from the use of data or maps.

Date: 12/2/2005



RAMONA COMMUNITY PROTECTION & EVACUATION PLAN
SECTION B – COMMUNITY HISTORY

History of the Ramona Region

Ramona is located in the Santa Maria Valley approximately 35 miles northeast of San Diego, and about 25 miles east of the coast. It is bordered by the City of Poway to the west, Lakeside and the Barona Indian Reservation to the south, Santa Ysabel to the east, and Escondido and the North Mountain Subregion to the north. The Santa Maria Valley is at approximately 1,400 feet elevation. Mountains at the Ramona/Poway border reach elevations of about 2,800 feet. Ramona covers approximately 130 square miles. Ramona is in the unincorporated portion of San Diego County and conforms to the Ramona Community Planning Area.

Ramona has a long history of nature-related emergencies. Fire is the most common problem with a long history of small and large brush fires. Size and extent of the fires is related to wind conditions, humidity, fuel load, and resources available.

Rainfall typically doesn't fall during the summer months, and it often stays dry until well into the fall or winter seasons, with extreme fire conditions being common. The Inaja fire burned into the south side of Ramona in November of 1956. Approximately 45,000 acres burned. In October of 1967, fires driven by Santa Ana winds burned the north side of Ramona from Montecito Rd., topping Mt. Woodson before burning through Poway to State Route 395. Over 56,000 acres burned. In October of 2003 the Cedar fire burned through Ramona south of Hwy 67 from the Cleveland National Forest near the San Diego Country Estates to the City of San Diego, then turned when the winds changed. Over 270,000 acres burned. The extent of dirt roads, often narrow and twisting with residences not clearly marked, makes evacuation and assistance difficult.

Rainfall is erratic. One year of flooding may be followed by several years of drought. Major flooding occurred in Ramona during the rainstorms in 1916 and again when earthen dams broke in 1980 following a prolonged period of rain. Hatfield Creek, Etcheverry Creek and the Santa Maria Creek all overflowed. Some of the areas where flooding occurred include the Highland Valley area of the valley, in the Town Center along "D" St., and along Magnolia St. and Pamo Rd. Floods of approximately 50-year to 100-year frequency have been estimated in the Santa Maria Creek, which flows through Ramona. In January of 2005, water covered Rangeland Rd. and Highland Valley Rd. following an extended period of rain.

Mudslides and debris flows are common after prolonged periods of rain. At least twice (1980 and 1995) a giant boulder slid off of the mountains in the Mt. Woodson area, and into Hwy 67, blocking the State Highway.

RAMONA COMMUNITY PROTECTION & EVACUATION PLAN
SECTION C – COMMUNITY STAKEHOLDERS

Stakeholders

The Community Stakeholders listed below include homeowners' associations, neighborhood groups, and agencies with an interest in the well-being of the community.

Blue Sky Ecological Reserve
(858)679-5469

Owned by Dept. of Fish and Game, County Dept. of Parks
and Recreation and the City of Poway
Dept. of Fish and Game
City of Poway, Division of Community Services

P. O. Box 724
Poway, CA 92074

Barona Fire Protection District
Randy Sandoval, Fire Chief: (619)390-2794
1112 Wildcat Canyon Rd.
Lakeside, CA 92040

California Department of Forestry and Fire Protection
Battalion Chief Mike Bratton: (760)789-1150
Mt. Woodson Station, 16310 Hwy 67, Ramona, CA 92065 (760)789-1150
Witch Creek Station, 27330 Hwy 78, Ramona, CA 92065 (760)789-1448
Warner Springs Station, 31049 Hwy 79, Warner Springs, CA 92086 (760)782-3560

County of San Diego
Department of Parks and Recreation
Open Space and MSCP Office
5201 Ruffin Rd., Ste. P
San Diego, CA 92123
Public Information: (858)694-3030
Barnett Ranch (Thos. Bros. 1172-H5 – San Vicente Rd.)
Mt. Gower Preserve (Thos. Bros. 1173-F1 – 7090 Gunn Stage Rd.)
Simon Park (Thos. Bros. 1173-D3 – Main Entrance off Bassett Court)

County of San Diego
Department of Parks and Recreation
5201 Ruffin Rd., Ste. P
San Diego, CA 92123
Public Information: (858)694-3030
Collier Park
626 E St.
Ramona, CA 92065

RAMONA COMMUNITY PROTECTION & EVACUATION PLAN
SECTION C – COMMUNITY STAKEHOLDERS

County of San Diego
Department of Parks and Recreation
5201 Ruffin Rd., Ste. P
San Diego, CA 92123
Public Information: (858)694-3030
Dos Picos Park
17953 Dos Picos Park Rd.
Ramona, CA 92065

County of San Diego
Ramona Airport
Bo Donovan, Airport Manager: (760)788-3366 (Airport Tower)
2926 Montecito Rd.
Ramona, CA 92065

County of San Diego
Department of Public Works
Ramona Road Station
Lary Johnson: (760)787-3312
116 5th St.
Ramona, CA 92065

Intermountain Volunteer Fire Department
Cary Coleman, Chief
Fire Station – (760)789-3710
25858 Hwy 78
Ramona, CA 92065

Mt. Woodson Golf Course
Phone: (760)788-3555
Fax: (760)788-3655
16422 North Woodson Dr.
Ramona, CA 92065
Owned by The Woodson Group, LLC & The Woodson Golf Partners, LLC (offices are in Del Mar)
Head Pro and General Manager Onsite: Greg Amescua
Course is managed by JC Resorts

Mt. Woodson Homeowners' Association
Preferred Property Managers, Emergency Number: (858)569-8077
8963 Complex Dr., Ste. B
San Diego, CA 92123-1416

RAMONA COMMUNITY PROTECTION & EVACUATION PLAN
SECTION C – COMMUNITY STAKEHOLDERS

Ramona Aerial Attack Base
California Department of Forestry and Fire Protection
Battalion Chief Ray Chaney: (760)789-1370
United States Forest Service
Deborah Lutz, Air Attack Base Manager: (760)789-1520
2498 Montecito Rd.
Ramona, CA 92065

Ramona Fire Department
Battalion Chief Mike Vogt: (760)788-2250
Station 80, 829 San Vicente Rd., Ramona, CA 92065 (760)788-2222
Station 81, 24462 San Vicente Rd., Ramona, CA 92065 (760)788-2229
Station 82, 3410 Dye Rd., Ramona, CA 92065 (760)788-2269

Ramona Municipal Water District
Thomas Brammell, General Manager: (760)789-1330
105 Earlham
Ramona, CA 92065

Ramona Sheriff's Substation
Lt. Karen Axall: (760)789-1200
1424 Montecito Rd.
Ramona, CA 92065

Ramona Unified School District
Pete Schiff, Superintendent of Schools: (760)787-2000
720 9th St.
Ramona, CA 92065

Salvation Army
Don Read, Emergency Disaster Services: (619)446-0262
Sierra del Mar Campground
14488 Mussey Grade Rd.
Ramona, CA 92065

San Diego Country Estates Association
Mario Trejo, General Manager: (760)789-3788
San Vicente Golf Course: (760)789-3477
San Vicente Country Club: (760)789-8290, ext. 2211
24157 San Vicente Rd.
Ramona, CA 92065

San Diego Rural Fire Protection District
Battalion Chief Dave Nissen: (619)669-1188
14145 Hwy 94
Jamul, CA 91935

RAMONA COMMUNITY PROTECTION & EVACUATION PLAN
SECTION C – COMMUNITY STAKEHOLDERS

San Pasqual Volunteer Fire Department
Gil Turrentine, Chief
17701 San Pasqual Valley Rd.
San Diego, CA 92025
(760)480-9924
Dispatch: (858)565-5200

United States Forest Service
Goose Valley Fire Station
Rick Marinelli, Division Chief: (760)789-0191
1634 Black Canyon Rd.
Ramona, CA 92065

Younglife Oakbridge
(760)789-6980
P. O. Box 1739
Ramona, CA 92065

The following areas of Ramona have representatives and are stakeholders. Their personal, contact information is not included in this document. For contact information, or to add your neighborhood to this list, please contact the Ramona Community Planning Group at 15873 Hwy 67, Ramona, California, 92065.

- Ballena Valley
- Barona Mesa
- Highland Hills Estates
- Holly Oaks Ranch Community Improvement Organization (HORCI)
- Monte Vista Oaks, LLC; Rancho Canada Bed and Breakfast
- Mussey Grade Road Alliance
- Oak Tree Ranch
- Rancho San Vicente Homeowners' Association
- Rancho Santa Teresa

RAMONA COMMUNITY PROTECTION & EVACUATION PLAN
SECTION C – COMMUNITY STAKEHOLDERS

RAMONA COMMUNITY PROTECTION & EVACUATION PLAN
SECTION D – MITIGATION STRATEGY

Mitigation Strategy & Action Plan

The County of San Diego has developed an Action Plan with ten specific goals and many supporting actions to help accomplish the goals. Two of the Goals associated with the coastal areas do not apply to Ramona. The most significant Goals that do apply to our area are as follows:

- Goal 1: Promote disaster resistant future development.
- Goal 3: Build and support local capacity and commitment to become less vulnerable to hazards.
- Goal 4: Enhance hazard mitigation coordination and communication with federal, state, local and tribal governments.
- Goal 5: Reduce the possibility of damage and losses ... due to dam failure.
- Goal 6: Reduce the possibility of damage and losses ... due to earthquake.
- Goal 8: Reduce the possibility of damage and losses ... due to landside.
- Goal 9: Reduce the possibility of damage and losses ... due to flooding.
- Goal 10: Reduce the possibility of damage and losses ... due to structural fire/wildfire.

Of the above Goals, number ten (10) is the most critical item for our area. The others are important and could, under the right conditions, be very serious. Our area will be very interested in supporting the County of San Diego with the accomplishment of the established goals. This can be achieved through the various organizations in the area, with volunteers, the Ramona CERT, the Ramona Community Planning Group, and through individual participation and training.

RAMONA COMMUNITY PROTECTION & EVACUATION PLAN
SECTION E – COMMUNITY PROTECTION & EVACUATION PLAN

Ramona Area Evacuation Routes

Evacuation routes will be selected based upon the emergency situation affecting the Ramona area. *Permission to use these routes during an evacuation should be verified before directing people to them.*

Danger from the west: If the danger is to the west of Ramona and moving towards the area, an eastward evacuation route should be taken. The safest eastward route will be on Hwy 67 east and continue on Hwy 78 toward Julian.

Danger from the east: If the danger is to the east of Ramona and moving towards the area, a westerly evacuation route should be taken. The most direct route to the west is Hwy 78 and Hwy 67 toward San Diego and Escondido. An alternate to this route might be Wildcat Canyon Rd. to Interstate 8 west toward San Diego.

Danger from the north: If the danger is to the north of Ramona and moving towards the area, again, the evacuation should be either of the routes described above: Hwy 67 west or Wildcat Canyon Rd. south toward Interstate 8. Hwy 78 east toward Julian might be an option if the fire is not near that part of town. Always use good judgment.

Danger from the south: If the danger is coming from the south and moving toward the area, two routes will move the evacuees to the north. First is Hwy 78 towards Escondido, and second is Hwy 67 east, if the danger is not towards Poway or Lakeside areas. Hwy 78 west towards Borrego could be another option. Again, always use good judgment and leave an area as soon as possible to avoid danger.

Possible Emergency Situations

Several emergency situations can cause an evacuation in this area. Fire is the most prevalent danger, but flash flooding, earthquakes, or other events may trigger the need for these routes to be used. When contemplating a specific route, the nature of the danger has to be foremost in the mind of the evacuee and the safest routes should be taken. Typically, the Sheriff's Deputies in the area will give directions for an evacuation and instructions as to where to go and what route to follow. The individual should be aware of his or her surroundings/circumstances, keep up with the news, and take action personally if they or their family seem to be in danger. The following map in Figure 6 shows the local roads and various routes that may be taken if needed.

RAMONA COMMUNITY PROTECTION & EVACUATION PLAN
SECTION E – COMMUNITY PROTECTION & EVACUATION PLAN

Safety Zones and Fire Breaks

In the Ramona area, there are several places where people could assemble for a few hours and be relatively safe from most dangers that might force people to seek safety. It will depend on the danger. Places with open space and plenty of room to park, but not necessarily with water and restroom facilities are described below. The only large fire breaks in the area are the natural ones created where the grass is still green in the summer such as golf courses and baseball fields. *Permission to use these places as safety zones should be verified before directing people to them.*

Possible Areas

Ramona High School, about 1 mile south of Main Street on 1401 Hanson Lane.

Large lot and open space

Ramona Airport at 2450 Montecito Road.

Large lot and open space

Ramona Community Park is also another great location.

Large lot and open space

James Dukes Elementary at 24908 Abalar way has a large area to assemble.

Large lot and open space

Shelters and Assembly Areas

Primary shelters. There are two primary Emergency Evacuation Shelters in the Ramona Area. It is also very important to be aware of other potential shelters in the neighboring communities.

Emergency Evacuation Shelter List – See Appendix J.

Resident and Resource Map with GPS Information

We have collected information pertaining to:

- Citizens whom need special assistance in an emergency
- Sources of safe drinking water in the area
- Sources of water for animals
- Large reservoirs, ranch ponds and
- Motor fuel supplies

These items will be identified and located on a large-scale map or combination of maps along with other data as required. The roads and trails in the area will also be identified on the map and will be useful as handouts to give directions to someone, needing to find a specific location in the area.

RAMONA COMMUNITY PROTECTION & EVACUATION PLAN
SECTION E – COMMUNITY PROTECTION & EVACUATION PLAN

Important resources will have Global Positioning System (GPS) coordinates associated with them so that information can be shared with Agencies and individuals as required.

The Bureau of Land Management, the San Diego County Sheriff's Department and the US Border Patrol all have mapping systems and utilize the GPS coordinated systems. Ramona's mapping efforts will make it easier and faster to coordinate with these agencies if the need arises.

These maps can be used as an Incident Status Map, helping to stay current on the status of an event and provide visual information to the Disaster Center Control System volunteers, the public and the media.

The maps will not be an integral part of this procedure due to the complexity, size and data content. They will however be available at the prime Emergency Evacuation Center for our area. They will also be portable and can move quickly with the other operation support material as required.

Neighborhood Emergency Response Teams and Resources

There are several neighborhood response teams in the Ramona area. The primary ones are the professional ones in the form of the Sheriff's, the Fire Departments, the California Highway Patrol and the local ambulance service. These organizations have been discussed throughout this procedure but there are other teams that also help in emergencies.

One of the other key volunteer emergency response teams are the Community Emergency Response Teams (CERTs). These are people who have had special training in the basic disaster skills, such as fire safety, light search and rescue, team organization, and disaster medical operations. These CERTs can provide valuable assistance to the professional organizations mentioned above and to the public in general. They often play a key role in local emergency training, organizing groups and teaching classes.

To become a CERT member, you will have to take the CERT training from a sponsoring agency like an emergency management agency, fire department or Police department. One of the agencies that can provide CERT training is the San Diego Branch of Citizen Corps. See Section 15 in this procedure for CERT and other training that is available and very useful.

Community Alert and Notification Plans

The San Diego Emergency Alert System (EAS) covers the entire County. Two radio stations, KOGO, AM 600, and KLSD, AM 1360, have been provided with back-up generators and are the primary Emergency Alert radio stations for our community. There is also a small community radio station located in Potrero, KJBQ FM 103.3 that will transmit approved community alert messages. The station cannot currently be received in most places in our area but the owner is attempting to locate an antenna and transmitter

RAMONA COMMUNITY PROTECTION & EVACUATION PLAN
SECTION E – COMMUNITY PROTECTION & EVACUATION PLAN

on Los Pinos Mountain. If that effort is successful, most of our community will be able to receive that station also.

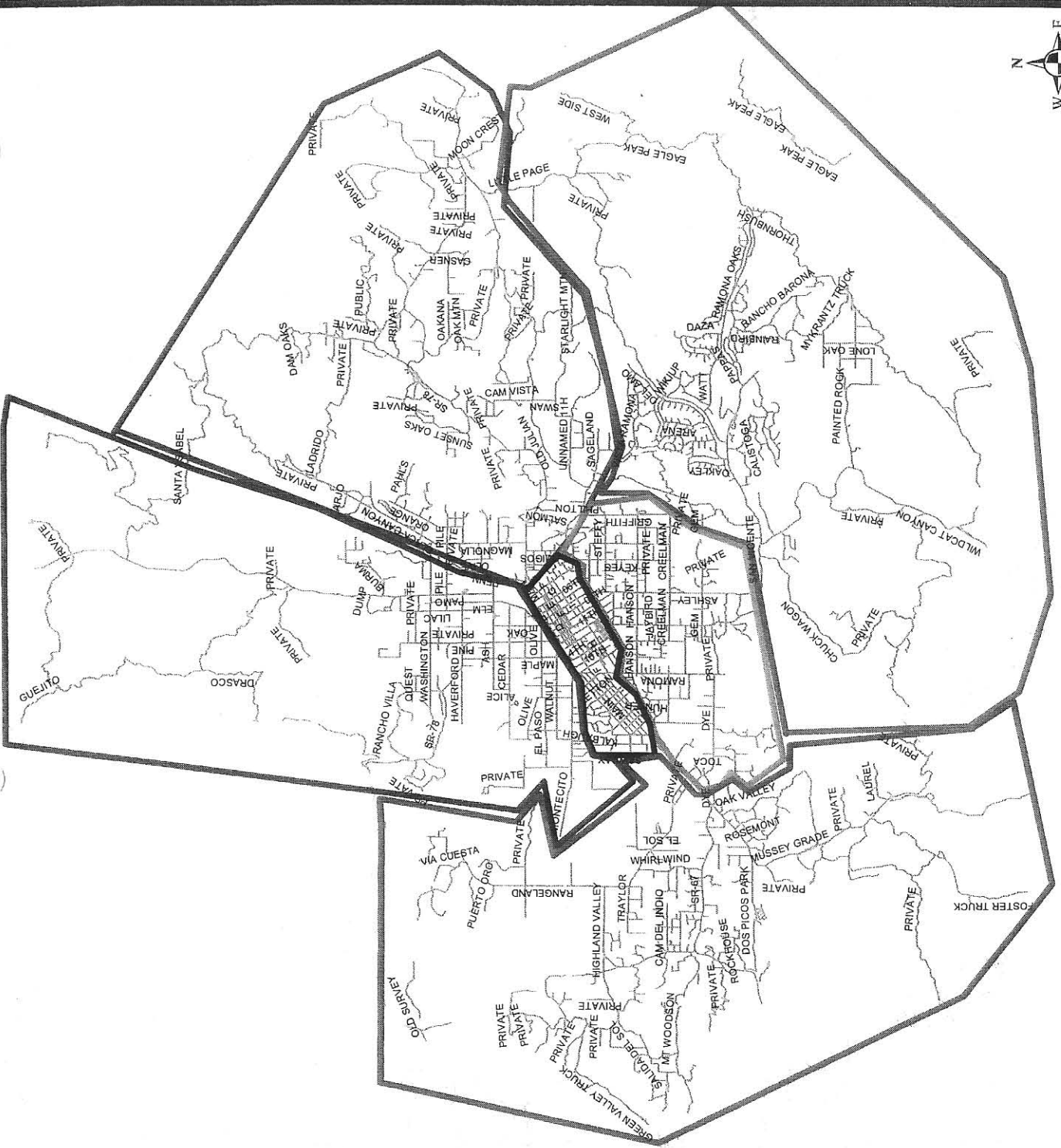
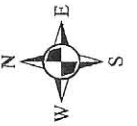
The Sheriff's Communication Center has a reverse 911- callout system, known as the Community Emergency Notification System (CENS), to notify residents in the event of an emergency. This system will automatically call the published and unpublished landline phone numbers of residents in an affected area with a recorded message. It is an additional tool that can be used in the event of an emergency, in addition to Sheriff's Deputies and the EAS.

The following is the general sequence of events during an emergency that may involve an evacuation.

1. During a critical incident where residents will be evacuated, the first responders on scene will be Sheriff's Deputies who are either working or called out.
2. They will meet with Fire Department personnel who will advise them of the critical area that needs to be evacuated. Once these areas are identified, the Sheriff's Deputies are responsible for the evacuation.
3. The Sheriff's Deputies will notify their sergeant, who will determine what resources will be needed. If additional deputies are needed, he will make a request for the manpower necessary to get the evacuation done.
4. All deputies in the immediate area are called out and then go to the surrounding areas. This would include all major stations, if necessary. There would be no problem getting the necessary manpower.
5. A command post will have been established which deputies report to. They will be given their assignments.
6. Once the order to evacuate is given, the deputies will start the evacuation process. They will go to the designated area and, with the use of their car loud speaker, make the announcement to evacuate. At the same time deputies will be going house-to-house advising people to leave their residence and telling them of a safe route to take.
7. If ASTREA (helicopter) is available, they will also make announcements over their loudspeaker to evacuate.
8. The Sheriff's Department may get help from the California Highway Patrol and/or the US Border Patrol if needed.

Note: Law Enforcement Officers cannot force a person to evacuate, they can only advise the person to leave his/her residence. It is up to the individual to make the choice. In an emergency where time is critical and a person refuses to evacuate, he/she is on their own. We will not risk lives to help somebody who puts himself or herself in harms way when other people need the services. The only exception to the rule is if there are children involved. A parent cannot put his/her children at risk. If children are involved in a forced evacuation and the parent refuses to evacuate and keep the children with him/her, he can be arrested and the children removed to a safe place.

RAMONA COMMUNITY PROTECTION & EVACUATION PLAN
SECTION E – COMMUNITY PROTECTION & EVACUATION PLAN



Ramona Command

Zone 44-1

Zone 44-2

Zone 44-3

Zone 44-4

Zone 44-5

Zone 44-6

RAMONA COMMUNITY PROTECTION & EVACUATION PLAN

SECTION F: FIRE DEPARTMENT RESPONSE PLAN

Ramona Fire Dept.
Incident Alarm Sequence

Incident Type	First Alarm						Second Alarm						Third Alarm					
	Eng	Res	Med	Trk	BC	DC	Eng	Res	Med	Trk	BC	DC	Eng	Res	Med	Trk	BC	DC
Medical Aid	1*		1				SC		SC		N		D	D	D		1	N
Medical Aid-CPR	1*	1	1				SC		SC		N		D	D	D		1	N
T/C	1*	1	1				SC	SC	SC		N		D	D	D		1	N
T/C-Cut & Rescue	1	1	1		1		SC	SC	SC		SC	N	D	D	D		SC	N
Vehicle Fire	1		1				1				N		SC	SC	SC		1	N
Vehicle Fire-Large	2*		1		1		2*				N		SC	SC	SC		SC	N
Structure Fire-SM	3*	1	1		1		3*	SC	SC	SC	1	N	3*	SC	SC	SC	1	1
Structure Fire-LG	4*	1	1		1		3*	SC	SC	SC	1	N	3*	SC	SC	SC	1	1
Vegetation Fire	2				1		(In addition to standard CDF Response)											
Aircraft Fire/Crash	2*	1	1		1		3*	SC	SC		1	N	Special Call					
Haz Mat	1*	1	1		1		Special Call				N	Special Call					1	
Public Service	1						Special Call			N								
Debris Fire	1						Special Call			N								
Smoke Check	1						Special Call			N								

SC = Special Call/Special Request

D = Annex "D"

N = Notification Only

(*)= Utilize Schedule B Engines when available; Minimum of two (2) Type 1 Engines to be dispatched on all structure fire responses.

(*)= For medical aids & TC's in Sta. 82's IA, start one unit from Ramona when available.

revised 7-15-01

standard response plan

RAMONA COMMUNITY PROTECTION & EVACUATION PLAN
SECTION G – LAW ENFORCEMENT RESPONSE PLANS

Law Enforcement Response Plans

The Sheriff’s Department will be represented by liaison with the Incident Command. When fire officials direct, or if Sheriff’s deputies see that it is necessary to conduct an evacuation advisory of the community, they will provide the evacuation advisory in the areas with most imminent threat first. The evacuation advisory will be based on the information known at the time.

Depending on circumstances, there may be time to collect valuables, or the evacuation advisory may be urgent, where there is only time for evacuees to get into their vehicle and follow the route that the deputy provides. This underscores the importance of preparation on the part of residents.

Citizens have the legal right to refuse to evacuate, however if this act endangers children, they are subject to arrest. If a citizen refuses an evacuation advisory he/she does so at his/her own peril, and assumes the inherent risks.

In the event that the County activates a computerized mass phone calling disaster alert system, the call may provide directional information and other important instructions. Residents need to be aware that such a system only calls land line telephones and will not call cell phones. If telephone poles and wires close to the disaster are damaged, the system may not activate in a particular area.

After an area has received an evacuation advisory, the Sheriff’s Department will, if possible, conduct patrols to prevent theft and looting.

REGARDING PETS AND LIVESTOCK (Please also reference Section H – Animal Services):

Always keep identification on your pets and take photographs for identification purposes. Consider Microchipping your animal to permanently identify them and make sure to keep your contact information current.

In addition to your regular supply of pet food, have at least a week worth supply of food and water on hand to use during a disaster.

Have a leash, harness or carrier for each animal ready, in an easily accessible place in the house, in case you have to leave in a hurry.

Make sure your family knows the “evacuation plan” and have contact information for friends to assist you if necessary. Don’t wait until the last minute to leave your house; this can make the difference between taking your animals and leaving them behind.

RAMONA COMMUNITY PROTECTION & EVACUATION PLAN
SECTION G – LAW ENFORCEMENT RESPONSE PLANS

LAW ENFORCEMENT RESOURCES

Law Enforcement Resources

The Ramona area is served primarily by the County of San Diego Sheriff's Department. The Sheriff's Department has offices nearby in Ranchita, Julian, and Poway. The California Highway Patrol provide support of the highway system. Both of these organizations work well together and give very good coverage no matter what the problem is. The following list gives quick contact information and a summary of their responsibilities.

Ramona Sheriff's Substation. 1424 Montecito Road, Ramona, Ca. 92065.
(760)789-1200, Fax (760)788-9077, Dispatch (858)565-5200.

1. Acts as incident commander during law enforcement emergencies.
2. Two communication vehicles located in San Diego.
3. Provides crowd and traffic control.
4. Provides tactical communication.
5. Establishes and maintains ingress and egress routes for emergency vehicles
6. Provides perimeter control
7. Provides security at the scene.
8. Provide community evacuation warnings.

California Highway Patrol. 1722 Main, El Cajon, Ca. (619) 401-2000; dispatch (858) 637-3800; www.chp.ca.gov.

RAMONA COMMUNITY PROTECTION & EVACUATION PLAN
SECTION G – LAW ENFORCEMENT RESPONSE PLANS

RAMONA COMMUNITY PROTECTION & EVACUATION PLAN
SECTION H – ANIMAL SERVICES

Animal Services

Response Plan:

What we do for you.

San Diego County Department of Animal Services is the agency responsible for orchestrating, directing, and responding to disasters involving animals within San Diego County. We work closely with other animal rescue groups, such as the San Diego Humane Society (SDHS) and their Large Animal Rescue. We take direction from the Sheriff's Department, CDF, or the local Fire Department, whomever is Incident Commander of that disaster.

Animal Services (DAS) will have a supervisor or a manager in the Emergency Operations Center (EOC), in our dispatch center, at the scene/staging area and will coordinate evacuations via this chain of communications. Our dispatch supervisor will talk to the dispatch office at SDHS who will normally have a supervisor at the evacuation site with our staff. We attend all the briefings at the command post and pass along updates to our staff.

At the staging area, our vehicles and trailers will stage for a request to evacuate. The supervisor at the scene will keep track of what officers they send to what address, and when they return with animals, will keep track of what animals came from what address. They will also be in charge of using community volunteers who may arrive with trailers or vehicles to assist. Many times officers are sent out with a civilian rig to evacuate, but we escort them at all times to make sure the civilians are safe. There will either be a temporary shelter set up at the staging area or nearby, or the vehicles will take the animals directly to an approved evacuation site. For small animals, that may be back at the Carlsbad shelter for your area, or another designated site, of which the staging supervisor will be kept apprised of by the central dispatch.

We have recently purchased fluorescent yellow signs that will be posted at the entrance of each property where animals have been evacuated. These signs will have the name and contact phone number for the agency that removed the animals. If people evacuate their own animals, we ask that they leave some kind of note in plain view so that we can move on to the next resident needing assistance. We ask that everyone who has animals plan ahead and have enough carriers of adequate size to assist in the removal of their animals, and they should write their telephone number on the top of the carriers. DAS will have adjustable neckbands to write names and phone numbers that will be used for livestock of all sizes. People who own livestock should invest in a grease pencil and keep it handy so that when they have to leave their animals behind they can write their phone numbers on the necks of their livestock animals, which will aide in reuniting them after the evacuation.

Every neighborhood should have a main contact person, preferably someone who does not work outside the home, that can keep track of the immediate neighbors and what their

RAMONA COMMUNITY PROTECTION & EVACUATION PLAN
SECTION H – ANIMAL SERVICES

evacuation needs would be should people not be able to return to their homes to evacuate their animals. This person should maintain a list of residents, emergency contact numbers, and their animals, and who, if anyone, would be able to assist in the removal of their neighbor's animals should they not be able to get back into the evacuation area to remove them. This way someone can come to the evacuation site and give us a list of homes that they know need help.

We also ask that for every group of houses there is one person who is willing to keep a list of people who are available to help neighbors should a fire break out who will assist those neighbors who are unable to return to their homes.

Each neighborhood should have pre-designated, preferably large properties where neighbors can gather to ensure all the animals have been removed. From those areas we can either be called to that location to assist people in getting their animals out of the area or they can find their own assistance between neighbors.

Evacuate early – don't wait until the last minute. Lives will be lost. Train your livestock to load in a trailer – especially if you use a two-horse trailer. A disaster emergency is not the time to teach your animal to load. If it can't be loaded readily, it may need to be left at the scene.

RAMONA COMMUNITY PROTECTION & EVACUATION PLAN
SECTION I – MASS CASUALTY PLAN

The Ramona Fire Department follows the County of San Diego Annex D to manage all mass casualty incidents.

Activation of Annex D

1. A confirmed event has occurred that is a multi-casualty incident which exceeds the capabilities of the immediately available responding emergency contingent, or the patient care capabilities of proximate facilities.
2. An event is imminent, or has occurred, of such magnitude in a populated area that extensive casualties are inevitable, i.e., structure collapse, major transportation emergency, hazardous materials release.

Fire Department responsibilities

1. Assumes the role of Incident Commander under SEMS criteria and manages medical operations within the statewide fire managements system known as the Incident Command System. As multi-casualty incidents overwhelm the initial responding resources, the Incident Commander (IC) delineates and expands operational procedures.
2. Provide scene management.
3. Provide firefighting.
4. Provide extrication.
5. Provide rescue.
6. Provide initial triage.
7. Maintains communication with the EOC.
8. Maintains communications with the Base Hospital.
9. Coordinates air operations at the scene.
10. Determines the need for all additional resources and orders them as necessary.
11. Activate CERT, Red Cross or other assisting agencies as needed.

RAMONA COMMUNITY PROTECTION & EVACUATION PLAN
SECTION J – SHELTERING

Sheltering

The first priority is the safety of the people in the community. Under the Unified San Diego County Emergency Services Organization Annex G, Care and Shelter Operations, the American Red Cross is responsible for providing food, clothing, shelter and immediate psychological needs and first aid care of people affected by a disaster.*

In disasters, most of the shelter facilities will be in schools (primarily middle and high schools), public buildings/parks and churches. *It is not safe to pre-designate shelter sites.* There are many kinds of disasters that may affect a community: a wind-driven fire, roads closed by flooding, a building damaged by an earthquake, or a weapons of mass destruction disaster.

These events may render potential shelters in a community unsafe. Communities should be aware of the schools, public buildings and churches in their vicinity and in neighboring communities, with the understanding that their use as a shelter will be determined at the time of the disaster.

Responsibility for notifying the Red Cross of an incident requiring shelter operations rests with the Incident Commander at the scene or by the Office of Emergency Services. Announcements of shelter openings are made through the Emergency Alert Systems, established public information channels (ex: KOGO), 800-RED-CROSS and the new 2-1-1 information and referral toll-free number (effective July 2005).

Residents should not proceed to shelters without notification/approval by law enforcement, emergency personnel or through media sources, as this could jeopardize their safety and/or impede the emergency responders.

Red Cross administrative responsibility for mass care and financial control are inseparable. As noted in Annex G: “In assuming responsibility for relief, therefore, the Red Cross requires that all funds used by it in extending relief shall be expended in accordance with its established policies, regulations and procedures. Jurisdictions opening shelters or otherwise extending relief to victims of disaster without Red Cross concurrence will assume all financial responsibility for such relief.”

**The American Red Cross (ARC) as mandated by Federal Law 36-USC-3 and reaffirmed in Public Law 93-288 (Federal Disaster Relief Act of 1974), provides disaster relief in peacetime.*

RAMONA COMMUNITY PROTECTION & EVACUATION PLAN
SECTION K – IMPORTANT PHONE NUMBERS & CONTACT INFORMATION

Important Phone Numbers, Contact Information and Websites

Included in this section are phone numbers for a variety of contacts that may be useful before, during, and after a disaster. Various disaster-related websites are also listed. Schools are listed for easy reference only.

211: Potential source of information in a disaster.

Aging and Independence Services: (858)495-5525

American Red Cross: (858)309-1200

Animal Services (non-emergency number): (760)746-7307
(24-hour emergency number): (619)236-2341

Amateur Radio Emergency Service (A.R.E.S.): (760)788-6932

Barona Fire Protection District: (619)390-2794

Bioterrorism: (800)600-9594

Bioterrorism (Report suspicious activity): (619)515-6620

Bomb Team (Sheriff): (619)956-4980 (Mon. – Fri., 8-5), (858)565-5200

Border Patrol: (619)662-7321

California Department of Forestry and Fire Protection: (760)789-1150
Mt. Woodson Station: (760)789-1150
Witch Creek Station: (760)789-1448
Warner Springs Station: (760)782-3560

California Department of Forestry and Fire Protection, Fire Information Line:
(619)590-3160

California Department of Insurance (Insurance/fraud questions): (800)927-4357

California Highway Patrol (Traffic related): (858)637-3800

Catholic Charities: (619)231-2828

Chief Administrative Officer (County), Staff Officer, Public Safety: (619)531-4521

Child Abuse Hotline: (800)344-6000

Code Enforcement: (619)441-4030

RAMONA COMMUNITY PROTECTION & EVACUATION PLAN
SECTION K – IMPORTANT PHONE NUMBERS & CONTACT INFORMATION

Department of Planning and Land Use: (800)411-0017

Elder Help of San Diego – (619)284-9281

Episcopal Community Services: (619)463-2754

The Extra Mile Ministries: (760)845-3986

Federal Bureau of Investigation: (858)565-1255

Federal Emergency Management Agency Individual Assistance (FEMA): (858)565-3490

Fire Safe Council of San Diego County: (619)562-0096

Goodwill Industries of San Diego County: (760)722-8582

Hazardous Materials: (619)338-2454

Health and Human Services Agency: (760)738-2471

Interfaith (for Seniors and Non-Seniors): (760)489-6380

Intermountain Volunteer Fire Department: (760)789-3710

Lutheran Social Services: (619)291-8721

Mental Health Department: (858)278-4110

Office of Emergency Services (County): (858)565-3490

Poison Control: (800)222-1222

Ramona Aerial Attack Base

California Department of Forestry and Fire Protection (760)789-1370

United States Forest Service: (760)789-1520

Ramona Airport: (760)788-3366

Ramona Chamber of Commerce: (760)789-1311

Ramona Community Planning Group: (760)788-4385

Ramona Fire Department: (760)788-2250

Station 80: (760)788-2222

RAMONA COMMUNITY PROTECTION & EVACUATION PLAN
SECTION K – IMPORTANT PHONE NUMBERS & CONTACT INFORMATION

Station 81: (760)788-2229

Station 82: (760)788-2269

Ramona Municipal Water District: (760)789-1330

Ramona Outback Amateur Radio (R.O.A.R.S.): (760)788-6932

Ramona Road Station: (760)787-3312, After Hours and Weekend Emergency:
(858)565-5262. Homeowner Erosion Control Assistance Center: (888)846-0800

Ramona Senior Center: (760)789-0440

Ramona Sheriff Substation: (760)789-1200

St. Mary's in the Valley Episcopal Church: (760)789-0890

Salvation Army: (619)446-0262

San Diego Concierge: (800)979-9091

San Diego County Access and Crisis Line: (800)479-3339

San Diego Gas & Electric, Emergency Line: (800)611-7343

San Diego Habitat for Humanity, Inc. – (619)283-4663

San Diego Humane Society and SPCA (non-emergency number): (619)299-7012
Animal Rescue Reserves (24-hour emergency number): (619)299-0871

San Diego-Imperial Counties Labor Council AFL-CIO – (619)261-7180

San Diego Rural Fire Protection District: (619)669-1188

San Pasqual Volunteer Fire Department: (760)480-9924

Dispatch: (858)565-5200

Sheriff's Department: (858)565-5200

Soroptimists International of Ramona: (760)789-4066

Spirit of Joy Lutheran Church: (760)788-7456

State of California, Department of Transportation (State Roadways): (619)688-6785

Taiwan Buddhist Tzu Chi Foundation: (858)546-0578

RAMONA COMMUNITY PROTECTION & EVACUATION PLAN
SECTION K – IMPORTANT PHONE NUMBERS & CONTACT INFORMATION

United Methodist Church, Ramona: (760)789-7106

United Methodist Church, Pasadena: (818)842-4378

United States Forest Service, Goose Valley Fire Station: (760)789-0191

Volunteer San Diego: (858)636-4135, (858)636-4134

Hospitals

Alvarado Hospital, 6655 Alvarado Rd., San Diego, CA (691)287-3270

Grossmont Hospital, 5555 Grossmont Center Dr., La Mesa, CA 91942 (619)465-0711

Kaiser Permanente, 4637 Zion Ave., San Diego, CA 92120 (619)528-5151

Palomar Medical Center, 555 E. Valley Parkway, Escondido, CA (760)739-3000

Pomerado Hospital, 15615 Pomerado Rd., Poway, CA 92064 (858)613-4000

Scripps Mercy (Trauma Center), 4077 5th Ave., San Diego, CA 92103 (619)294-8111

UCSD Medical Center (Trauma and Burn Center), 200 W. Arbor Dr., San Diego, CA 92103 (619)543-6222

Media

KOGO AM 600 Radio Newsroom – (858)560-6671

KLSD AM 1360 (Backup to KOGO)

San Diego's KGTV Channel 10 – (619)237-6319

Schools

Ramona Unified School District Office, 720 9th St., Ramona, CA 92065 (760)787-2000

Barnett Elementary School, 23925 Couna Way, Ramona, CA 92065

Principal: Shelagh Appleman (760)787-3500

Hanson Elementary School, 2520 Boundary Ave., Ramona, CA 92065

Principal: Carol Tennebaum (760)787-2100

James Dukes Elementary School, 24908 Abalar Way, Ramona, CA 92065

Principal: Paige Schwartz (760)788-5060

Montecito High School, 720 9th St., Ramona, CA 92065

RAMONA COMMUNITY PROTECTION & EVACUATION PLAN
SECTION K – IMPORTANT PHONE NUMBERS & CONTACT INFORMATION

Principal: Gary Tiegs (760)788-5070
Mt. Woodson Elementary School, 17427 Archie Moore Trail, Ramona, CA 92065
Principal: Theresa Grace (760)788-5120
Mt. Valley Academy, 1010 Ramona St., Ramona, CA 92065
Principal: Ellen Burgess (760)787-3600
Olive Peirce Middle School, 1521 Hanson Ln., Ramona, CA 92065
Principal: Linda Solis (760)788-5050
Ramona Community School, 1710 Montecito Rd., Ramona, CA 92065
Principal: Ellen Burgess (760)787-3600
Ramona Elementary School, 415 8th St., Ramona, CA 92065
Principal: Phyllis Munoz (760)788-5010
Ramona High School, 1401 Hanson Ln., Ramona, CA 92065
Principal: Tony Newman (760)787-4000

County, State and Federal Representative Contact List

California Governor: Arnold Schwarzenegger, State Capital, Sacramento, CA 95814. (916)445-2841, FAX (916) 445-4633

California State Assembly 75th District: George Plescia, 9909 Mira Mesa Boulevard, Suite 130, San Diego, CA 92131. (858)689-6290, FAX (858)689-6296

California State Assembly 77th District: Jay LaSuer, La Mesa office, 5360 Jackson Dr, Suite 120, La Mesa, CA 91941. (619)465-7723, FAX (619)465-7765

California State Senate 36th District: Dennis Hollingsworth, El Cajon office, 1870 Cordell Court, Suite 107, El Cajon, CA 92020. (619)596-3136, FAX (619)596-3140

San Diego County Board of Supervisors, 2nd District: Dianne Jacob, 1600 Pacific Highway, Room 335, San Diego, CA 92101. (619)531-5522 or (800)852-7322

U.S. House of Representatives 52nd District: Duncan Hunter, El Cajon office, 366 S. Pierce St., El Cajon, CA 92020-4136. (619)579-3001, FAX (619)579-2251

U.S. Senate: Barbara Boxer, San Diego office, 600 B St., Suite 2240, San Diego, CA 92101. (619)239-3884, FAX (619)239-5719

U.S. Senate: Dianne Feinstein, San Diego office, 750 B St., Suite 1030, San Diego, CA 92101. (619)231-9712, FAX (619)231-1108

Disaster and Disaster Preparedness Websites

<http://www.72hours.org>

RAMONA COMMUNITY PROTECTION & EVACUATION PLAN
SECTION K – IMPORTANT PHONE NUMBERS & CONTACT INFORMATION

<http://www.boxer.senate.gov/wildfires.cfm>

<http://www.co.san-diego.ca.us/oes/community/families/>

<http://www.disasterhelp.gov>

<http://www.earthquakecountry.info/roots>

<http://www.sdarc.org>

<http://www.sdcountyemergency.com>

<http://www.usgs.gov>

Fire/Disaster – Agency Related Websites

California Department of Forestry (CDF) Home Page: <http://www.fire.ca.gov>

- Links: - Blue Ribbon Commission Reports
- Fire Siege 2003
- General Information
- Beetle Infestation Information

Federal Emergency Management Agency (FEMA): <http://www.usfa.fema.gov/>

Ramona Muncpal Water District (RMWD): <http://www.rmwd.org/>

Ramona Fire Department Link: <http://www.rmwd.org/fire.htm>

San Diego County: <http://www.sdcdpw.org/tree/>

http://www.sdcounty.ca.gov/oes/oes_home.html

<http://www.sdsheiff.net/home/>

State of California, Office of Emergency Services:

<http://www.oes.ca.gov/Operational/OESHome.nsf/1?OpenForm>

United State Forest Service (USFS): <http://www.fsfed.us>

Community Awareness – Groups

Fire Safe Council: <http://www.firesafesdcounty.org/>

Community Emergency Response Team (CERT): <http://www.sdcertcouncil.org/>

RAMONA COMMUNITY PROTECTION & EVACUATION PLAN
SECTION K – IMPORTANT PHONE NUMBERS & CONTACT INFORMATION

Additional Information

For Kids: <http://www.sparky.org>
 <http://www.fema.gov/kids>

Institute for Business & Safety: <http://www.ibhs.org>

National Fire Protection Association: <http://www.nfpa.org>

For the Disabled: <http://www.nfpa.org> & navigate to
Learning/Public Education/Safety, Information/Safety

RAMONA COMMUNITY PROTECTION & EVACUATION PLAN
SECTION K-1 – RADIO COMMUNICATIONS

R.O.A.R.S.
Ramona Outback Amateur Radio Society
REGULAR CHECK IN ROSTER
FOR
(NET)
NETWORK OF COMMUNICATIONS
(3-10-05)

**Call sign Name Location Title/Position Contact
Phone #**

KF6AUP	Don Scott	Dye & 67	Net Mgr. E.C.	760-788-6932
KG6WZG	Ian Pedlow	Highland Vly	Asst. Net Control	760-788-0214
KD6RSQ	Chuck Carlson	Etcheverry	Repeater Trustee	760-789-0108
KB4HB	Richard Elling	East of town	ROARS Pres.	760-787-1828
NG6B	Lee Pedlow	Highland Vly	ROARS Treas.	760-788-0214
KG6FWO	Randy Cleveland	Escondido	ROARS Secra.	760-443-1688
KG6ODJ	Michelle Scott	Dye & 67	Operator	760-788-6932
KF6QGR	Marlene Scott	12 th & H st	Operator	760-788-1067
W6KLG	Morton Jones	3 rd St.	Operator	760-789-1544
KR6BG	Ken Donham	Country Est.	Operator	760-789-5192
KK6IL	John Kolb	S. Kalbaugh Rd.	Operator	760-789-6015
N6AHE	Terry McNeill	Barona Mesa	Operator	760-788-8688
KF6SMV	Bill Medlen	Mesa Grande	Operator	
KF6QXP	Paul Ransom	Pamo Vly	Operator	760-789-5955
KG6JDF	Glenn Jones	Dye Rd.& 67	Operator	760-789-0737

The above persons have been **REGULAR Check In's** To the weekly Network Communications Testing System.

All Have Given the approval to be contacted in the event of an emergency for the purpose of contributing to communications needs.

Most are CERT trained.

The Normal operating frequency for Communications and the Outlying areas is:

145.300 Mhz (vhf fm) Ramona Repeater. (also has telephone interface)

462.5625 Mhz (uhf fm) Family Radio Channel #1

The 147.030 Palomar Mtn. Repeater also provides **excellent** coverage throughout Ramona (also has telephone interface)

All above frequencies and equipment are Battery / back-up or generator stdby capable and have been tested.

RAMONA COMMUNITY PROTECTION & EVACUATION PLAN
SECTION K-1 – RADIO COMMUNICATIONS

In the event of communications needs, Contact the Net. Mgr. or any of the above list and an activation of such will be implemented as needed.

In the event of needs for local information, tune to the above frequencies and monitor as needed. **ROARS Repeater** is solar powered w/battery back-up. Also has telephone interface for emergency phone call access.

Weekly NET Tests and Drills are conducted on the above frequencies on Wednesdays at 7pm local time and continue until approx 8 pm. (except for the 4th Wednesday of the month)

Family radio operators are welcome to check in to test equipment as well.

WEB ADDRESSES FOR THE FOLLOWING SECTIONS:

- **SAN DIEGO COUNTY, THE MOUNTAIN EMPIRE SCANNER FREQUENCIES**
<http://www.craigwilliams.com/radio/scanner/heartland.htm>
- **CRAIG'S CITIZEN RADIO AND SCANNER PAGE**
<http://www.craigwilliams.com/radio/miss.htm#FRS>
- **EMERGENCY ALERT SYSTEM**
http://emergencyalertsystem.org/mailman/listinfo/sd-eas_emergencyalertsystem.org

RAMONA COMMUNITY PROTECTION & EVACUATION PLAN
SECTION K-1 – RADIO COMMUNICATIONS

**San Diego County, The Mountain Empire
Scanner Frequencies**

A work in progress. A list of scanner frequencies for the Mountain Empire Area of San Diego East County. Provided for residents who are interested in monitoring fire frequencies using Trunk Tracker scanners on the San Diego County 800 Mhz frequencies and State and Federal agencies on VHF. Coming soon, more information on how to use your scanner.

San Diego County, RCS, 800 Mhz Trunking System, Transmitter Site

The tables below are for the **Analog Heartland Fire Frequencies**. See the instructions for your scanner on programming these frequencies. Basically you need to enter the site frequencies, use the sites in bold for the Mountain Empire area, and then enter the Talkgroup numbers.

Frequencies in **RED*** are the system control channels.
Site Descriptions in **BOLD** cover the Campo area.

[Click on this link](#) to open an Adobe PDF file of the County RCS transmitter sites.

Site	Description	Freqs									
001	South Simulcast	866.0375	866.1375	866.4125	866.6375	866.8875	866.9125	867.1375	867.3875	867.4125	867.6125
		867.6375	867.9125	868.0750	868.1375*	868.4125*					
002	North Simulcast	856.1750	856.2000	857.1750	857.2000	858.1750	858.2000	859.2000	860.2000	860.2250	861.0000
		861.1500	861.2000	861.5000	862.1500	862.2000	863.1500*	865.0000			
003	Banner Ranch	866.7750	867.2750	867.7750*							
004	Marrow	866.1000	866.6000*	867.5750	868.0500						
005	Boucher Hill	866.0500	867.0500	868.0500	868.4500*						
006	Campo	856.2000	860.2000	862.2000	863.1500*						
007	Chihuahua Valley	866.1875	867.1875	868.1875*							
008	Cuyamaca Peak	865.1500	866.0875	866.5750	867.0375	867.9500*	868.4375				
009	Emery Hill	856.1250	857.2000*	858.2000	860.2250						
010	Harmony Hill	866.2750	866.8000	867.3000	867.7500*						
011	Hendrix Peak	856.1750	857.1750	858.1750	861.2000*						

RAMONA COMMUNITY PROTECTION & EVACUATION PLAN
SECTION K-1 – RADIO COMMUNICATIONS

01 2	Jojoba Hill	867.06 25	867.16 25	868.66 25*						
01 3	Los Pinos	867.07 50	868.10 00	868.60 00	868.95 00*					
01 4	Lyons Peak	866.97 50	867.87 50	868.37 50	868.92 50*					
01 5	Monument Peak	866.47 50	867.10 00*	867.47 50	867.56 25	867.87 50	868.48 75			
01 6	Mount Empire HS	866.22 50	867.22 50	867.72 50*						
01 7	North Peak	862.01 25	866.30 00	867.97 50	868.55 00*					
01 8	Rams Hill	866.36 25	866.86 25	867.36 25	868.86 25*					
01 9	Sierra Rojo	866.66 25	867.68 75	868.33 75	868.83 75*					
02 0	Sunshine Summit	866.68 75	867.66 25	868.68 75*						
02 1	Superstition Mtn	856.42 50	861.25 00	862.25 00	863.25 00*					
02 2	Volcan PacBell	866.33 75	866.83 75	866.83 75	866.97 50	867.33 75	867.83 75*	867.87 50	868.37 50	
02 3	White Star	859.20 00	861.15 00	862.15 00*						
02 4	San Onofre	867.07 50	867.56 25	867.95 00	868.07 50	868.47 50*				
02 5	Imperial Simulcast	856.07 50	857.07 50	858.05 00	858.07 50	859.05 00	859.07 50	863.10 00	864.25 00	865.25 00*
02 7	Black Mountain	856.20 00	857.20 00	858.20 00*						

Talkgroups, Heartland Inland Fire (San Diego, Mountain Empire)

TALKGROUP	DESCRIPTION
8688	Inland Fire Dispatch 2
9584	Inland Fire / Heartland Fire CMD-7
9616	Inland Fire / Heartland Fire CMD-8
9648	Inland Fire / Heartland Fire CMD-9
9680	Inland Fire / Heartland Fire TAC-11
9712	Inland Fire / Heartland Fire TAC-12
17232	Inland Fire TAC-13
17264	Inland Fire TAC-14
17296	Inland Fire TAC-15
17328	Inland Fire TAC-16
17360	Inland Fire Training 1
17392	Inland Fire Training 2
17424	Inland Fire Chiefs
21264	Rural Admin
7056	Fire air
10192	Med Air (Life Flight)
21296	Inland Fire Administration

RAMONA COMMUNITY PROTECTION & EVACUATION PLAN
SECTION K-1 – RADIO COMMUNICATIONS

East Mutual Aid

TALKGROUP	DESCRIPTION
1840	East CMD-1
1872	East TAC-1
1904	East TAC-2
1936	East CMD-2
1968	East TAC-3
2000	East TAC-4
2032	East CMD-3
2064	East TAC-5
2096	East TAC-6
2128	East CMD-4
2160	East TAC-7
2192	East TAC-8
2224	East CMD-5
2256	East TAC-9
2288	East TAC-10
2320	East TAC-11

State and Federal Fire, VHF Frequencies

Frequency	Agency
151.190	Monta Vista (CDF) LOCAL
151.145	CDF TAC 1
151.160	CDF TAC 2
151.175	CDF TAC 3
151.190	CDF TAC 4
151.250	CDF TAC 5
151.355	CDF Command 1
151.265	CDF Command 2
151.340	CDF command 3
168.750	USFS Dispatch
168.050	USFS Tac 1
168.200	USFS Tac 2
168.600	USFS Tac 3

San Diego County and California OES (Office of Emergency Services)

153.995	Border Cmd T1 (RPTR)
155.085	SD County Red
153.890	SD County Yellow
154.355	SD County Gray
153.815	SD County Brown
154.280	OES White 1
154.265	OES White 2

RAMONA COMMUNITY PROTECTION & EVACUATION PLAN
SECTION K-1 – RADIO COMMUNICATIONS

154.295	OES White 3
155.085	Fire Red Command
154.175	SD County Red 2
156.075	OES CALCORD
154.920	Clemars 1
154.935	Clemars 2
154.160	OES TAC 1
154.220	OES TAC 2
155.160	National Search/Rescue

Note: In the Mountain Empire the CHP has switched to the RCS digital system with the SDSO. To monitor these frequencies you need a \$800.00 + digital scanner! Follow this link to the [strong signals website](#) for an extensive list of analog and digital scanners.

Information courtesy of various Internet websites.

www.sandiegoscan.com

[The Radio Reference](#)

[Return](#)

RAMONA COMMUNITY PROTECTION & EVACUATION PLAN
SECTION K-1 – RADIO COMMUNICATIONS

Craig's Citizen Radio and Scanner Page

Shortcuts to topics on this page

[FRS and GMRS Radio](#)

[Multi-Use Radio Service \(MURS\)](#)

[Radio and Scanner Links](#)

FRS and GMRS Radio

FRS frequencies are interleaved with GMRS frequencies. GMRS radios are also authorized to transmit on FRS channels 1 to 7 with no more than 5 watts and using 5 KHz deviation. All FRS channels are simplex, with 3 KHz deviation, 500 milliwatts output and fixed antennas only. GMRS has expanded capability in power and external antennas allowed. GMRS uses 467 Mhz frequencies as repeater input channels.

FRS
Family Radio Service

GMRS
General Mobile Radio Service

Channel = Frequency

KEY
*

Frequency - Description

<u>01</u> = 462.5625	<u>8</u>	462.5750
<u>02</u> = 462.5875	<u>12</u>	462.6000 Repeater output ##
<u>03</u> = 462.6125	<u>9</u>	462.6250
<u>04</u> = 462.6375	<u>13</u>	462.6500
<u>05</u> = 462.6625	<u>15</u>	462.7250
<u>06</u> = 462.6875	<u>10</u>	462.6750 Local repeater
<u>07</u> = 462.7125	<u>14</u>	462.7000 Local repeater
08 = 467.5625	s	462.5625 Simplex low power
09 = 467.5875	s	462.5875 Simplex low power
10 = 467.6125	s	462.6125 Simplex low power
11 = 467.6375	s	462.6375 Simplex low power
12 = 467.6625	s	462.6625 Simplex low power
13 = 467.6875	s	462.6875 Simplex low power
14 = 467.7125	s	462.7125 Simplex low power
	<u>11</u>	462.5500 Repeater output ##
		467.5500 Repeater input
		467.5750 Repeater input

RAMONA COMMUNITY PROTECTION & EVACUATION PLAN
SECTION K-1 – RADIO COMMUNICATIONS

467.6000 Repeater input
467.6250 Repeater input
467.6500 Repeater input
467.6750 Repeater input
467.7000 Repeater input
467.7250 Repeater input

KEY

8 = Channel # on Audiovox GMRS 1525
s = GMRS shared with FRS
= Very active repeaters in San Diego

The Audiovox GMRS-1525

January 2003 update. I wrote the section below two years ago. Immediately I started to receive e-mails from people accusing me of encouraging people to use GMRS without a license. I know, if you read it there is nothing like that in there but ratio "freaks" are like Harley riders, obsessed. Anyway, two years later ALMOST ALL the FRS radios have GRMS in them. I saw one for free in an ad, \$9.95 with a \$ 9.95 rebate. I TOLD YOU SO.

Sold nationwide the [Audiovox GMRS-1525](#) is causing quite a stink in the "pure" GMRS community. This 5 watt (ERP) walkie talkie has 7 of the first FRS/GMRS frequencies and 8 GMSR only frequencies. (see chart above) It is easy to buy and easy to use and very easy to forget you are suppose to get an \$80.00 GMSR license from the FCC to use it. This really tweaks the "pure" GMRS community. If my experience with the FCC the past 30 years holds true GMRS can kiss off these 8 frequencies as soon to follow from other walkie talkie / FRS manufacturers will be a flood of 1525 like products and the FCC could care less about tracking down thousands of the "illegal" users thus created.

Multi-Use Radio Service (MURS)

The hottest, most recent, controversial, addition to "Family / CB" Radio is MURS. Established at the end of 2000 MURS has taken channels from the 151 Mhz VHF business band and **given them to "Family Radio"**. Look for lots of new product from radio manufacturers during 2001. For details on this service and it's progress [follow this link](#). There is an excellent discussion group on MURS at the [Popular Wireless Magazine](#) website.

MURS Channels

San Diego Comments

151.820 Mhz
151.880 Mhz

RAMONA COMMUNITY PROTECTION & EVACUATION PLAN
SECTION K-1 – RADIO COMMUNICATIONS

151.940 Mhz
154.570 Mhz ¹ Strong local repeaters
154.600 Mhz

Repeaters for MURS

So far repeaters are legal for MURS. [Follow this link](#) for a review on the Radio Shack simplex repeater. As Radio Shack has stopped making this unit try the [NHRC website](#) for their build it yourself repeater.

[Link to a good page listing Business Frequencies](#)

Radio and Scanner Links

[Craig's East County Scanner Lists](#)

[Trunked Radio Information Website](#)

[Western States Scanner / Trunking Frequencies](#)

[NAMA California Frequency List](#)

[Scanner Master](#)

[Freq of Nature. News and many frequencies](#)

[Popular Wireless Magazine](#)

[Monitor Times](#)

[Strong Signals](#)

[EZ-Scan Spiort, Uniden Sportcat 200 Programming Software](#)

Vendors

[HAM Radio Outlet](#)

[CheapHam.com](#)

Amateur, Scanner, Marine

[Return to Craig's W6CAW Page](#)

Updated 5/14/04

RAMONA COMMUNITY PROTECTION & EVACUATION PLAN
SECTION K-1 – RADIO COMMUNICATIONS



San Diego, California

Emergency Alert System

This website serves as a resource for radio and television broadcasters, cable facilities, and government agencies participating in the federally mandated **Emergency Alert System**. San Diego's operational area is limited to a portion of San Diego county. A map detailing the perimeter of our operational area is in your local EAS plan. The current plan has the notation "Major Revision August 2002" on the cover page.

Individuals with EAS oversight at their facility should subscribe to the [SD EAS list](#).

Notices of Required Monthly Tests, activations, and other emergency communications and coordination notices are distributed via the SD_EAS list. Notices of scheduled EAS general meetings are also distributed via the SD_EAS list.

CARE Alerts (local child abduction regional emergencies and state wide Amber Alerts) have been added to the list of potential EAS activations. For additional information about CARE Alerts, please visit the [CARE Alerts link](#).

Thank you for participating in San Diego's **Emergency Alert System**.

[Magazine Article: Vandalism or something more serious?](#)

[2005 RMT Schedule](#)

EAS LOG INFORMATION

[EAS Sample Log](#)

[Sample Log Explanation](#)

[Blank Log Sheet \(printable gif\)](#)

[Log Sheet \(Excel version\)](#)

[CARE ALERTS](#) (State Amber)

Child Abduction Regional
Emergency

[Revised EAS Rules](#)

(4/16/2002)

[Title 47, Part 11](#)

(EAS Rules & Regulations)

[EAS Handbooks](#)

(Radio, TV, and Cable)

[General EAS Information](#)

FCC Website

[General EAS Information](#)

SBE Website

[California EAS](#)

State of California

[FCC Self Inspection checklist](#)

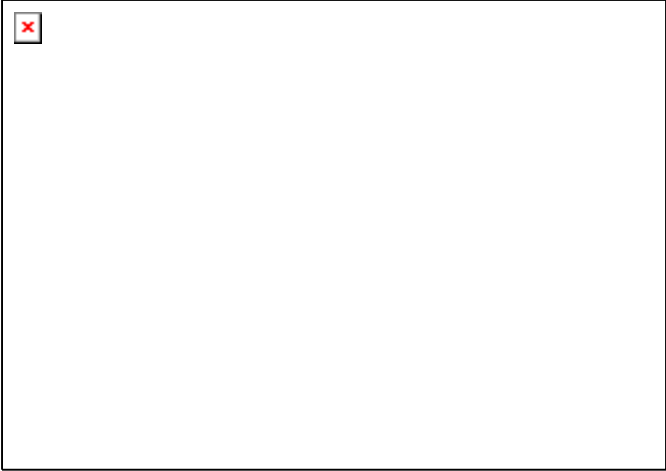
(short list)

[Contact San Diego EAS](#)

[Chairman](#)

[Subscribe to SD_EAS list](#)

RAMONA COMMUNITY PROTECTION & EVACUATION PLAN
SECTION K-1 – RADIO COMMUNICATIONS

<hr/> <p>Website Sponsors: San Diego Photos San Diego Pictures Digital Photo Recovery PhotoRescue</p> <hr/>	
---	--

Website design and banner photograph by [San Diego Stock Photos](#)

RAMONA AREA COMMUNICATIONS PLAN

Action Plan for Activation of Ramona Area CERT and ROARS Communicators

July 25, 2006

Prepared by Don Scott, Sally Inglis, and Richard Elling

Introduction

This document describes the action plan for civilian, 2-way communicators in the event of an emergency or disaster in the Ramona, CA area. Two groups have been identified as possessing the equipment and skills necessary to implement effective 2-way communications in the Ramona area in the event that other communications methods are ineffective as a result of an emergency or disaster.

These groups are:

CERT – Community Emergency Response Team members

ROARS – Ramona Outback Amateur Radio Society members

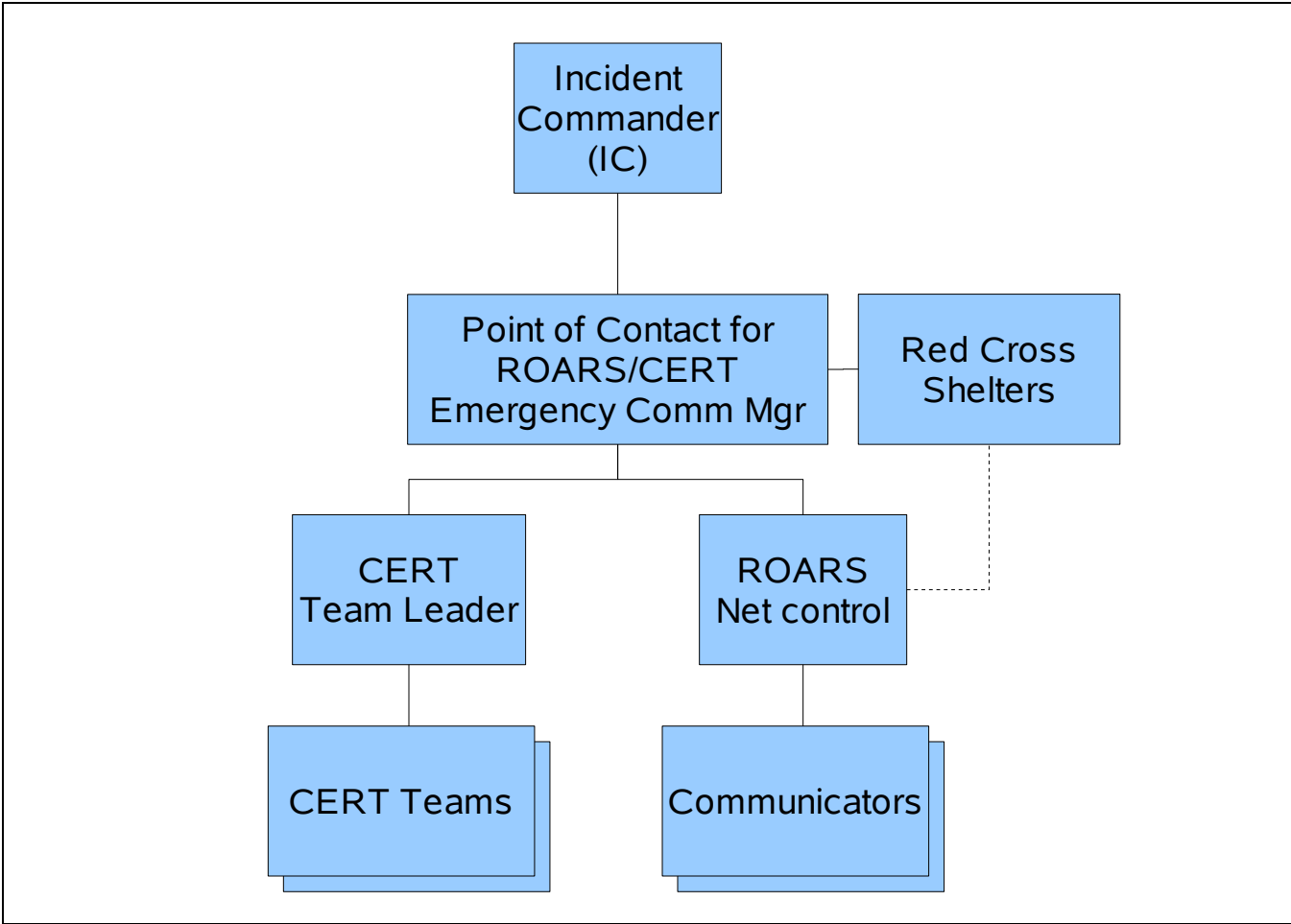
In some cases, an individual may belong to both groups.

In this document, the term *net* is used to describe a network of communicators. In the case of an emergency or disaster, the nets described herein use voice over 2-way radios. Other communications technologies may also be available and will be used as appropriate.

This plan is organized into four sections: activation procedures, radio information, procedural documents, and a confidential section containing personnel contact information.

1. Activation Procedures

The civilian communicators can be activated by direction of the incident commander. A point-of-contact (POC) will be identified (see personnel section below) and will be responsible for activating the amateur radio net and Family Radio Service (FRS) net. Both nets are expected to be activated due to the limited direct radio coverage in the Ramona area due to the geography. Most ROARS communicators also have FRS equipment. ROARS communicators are skilled at passing traffic between nets.



2. Radio Information

This section describes the methods used by various government agencies and the general public for communications in the event of an emergency. Radio channel or frequency information is provided so that scanners or general purpose receivers can be used by the general public.

2.1. Commercial Broadcast Radio Information

The primary Emergency Alert System (EAS) broadcast station in San Diego is KOGO, 600 kHz on the AM broadcast band. Other radio and TV stations may also rebroadcast emergency alerts.

2.2. Family Radio Service Information

The Family Radio Service (FRS) is an unlicensed (citizen's band) 2-way radio service. FRS channel 1 is the national emergency frequency, 462.5625 MHz. Citizens can tune into FRS channel 1 for information or to communicate with the net control during an emergency. Section 3.3 provides an example of the information you should hear on a FRS radio during an emergency.

Many FRS radios have privacy codes or interference eliminator codes. If you have these codes enabled, then you may not be able to hear the emergency traffic or information on FRS channel 1. Consult your radio instructions to determine how to disable privacy codes.

There are many locations in the Ramona area where FRS radios can not be used to communicate with other areas. In general, FRS radios work well for line-of-sight communications. You may have difficulty with FRS reception if you are in a low spot or canyon. For best results, always keep your radio in an upright position with the antenna pointing skyward. See section 2.4 for a chart showing 2-way radio coverage for the Ramona area.

2.3. Amateur Radio Equipment Information

ROARS operates and maintains the following radio communications facilities. Unless otherwise noted, frequency modulation (FM) is used.

<i>Description</i>	<i>Frequency (MHz)</i>	<i>Offset</i>	<i>PL Tone</i>	<i>Power Supply</i>	<i>Notes</i>
2-meter repeater 924 Etcheverry Street, Ramona	145.300	-600 kHz	88.5	SDGE, battery, solar	autopatch (telephone) link capable
70 cm repeater 924 Etcheverry Street, Ramona	445.760	-5 MHz	88.5	SGDE, battery, solar	Echolink internet link capable
APRS digipeater Julian, CA	144.390	-	-	battery, solar	

Other local amateur radio equipment frequently used by ROARS members in the Ramona area.

<i>Description</i>	<i>Frequency (MHz)</i>	<i>Offset</i>	<i>PL Tone</i>	<i>Power Supply</i>	<i>Notes</i>
2-meter repeater Mount Palomar	147.030	+600 kHz	103.5	SDGE, battery	owned by ECRA, excellent coverage of the back country, National Weather Service weather net, autopatch
National simplex frequency	146.520	none	none	not applicable	difficult to provide coverage in many locations in the area. Repeaters are preferred. See section 3.4

2.4. Ramona Area VHF Simplex Coverage

This chart shows the coverage for 2-way VHF (2-meter) in the Ramona area.

	Fire Station 80	Fire Station 81	Fire Station 82	CDF 16310 Hwy 67	CDF Ramona airport	S.D. Sheriff	USFS Goose Valley	James Duke Elem	Olive Pierce School	Ramona Elem	Mt. Woodson Elem	N. County Health Svc	SDCE Stores	Ramona Community ctr	Hwy 78 & Weekend Villa	Dos Picos Park	San Vicente & Wildcat Cyn	Old Julian & Vista Ramona	Delamo & Rutherford	Ramona Oaks & Tranquility	Fernbrook	243xx Watt Rd SDCE	Julian Township
Fire Station 80	□	□	●	—	●	?	?	●	●	?	?	?	?	●	—	?	□	●	□	□	—	●	●
Fire Station 81		□	—	□	●	—	—	●	□	—	□	—	●	—	—	□	●	—	●	●	—	●	●
Fire Station 82			□	●	●	—	—	—	—	□	●	□	—	●	—	□	—	—	□	●	—	●	●
CDF 16310 Hwy 67				●	●	—	—	—	—	□	●	□	—	●	—	□	—	—	□	●	—	●	●
CDF Ramona airport					●	●	□	—	●	●	●	□	●	●	—	●	□	?	?	?	?	●	●
S.D. Sheriff						●	—	—	?	●	□	●	□	●	—	□	□	□	—	—	—	□	●
USFS Goose Valley						—	—	—	?	●	□	●	□	●	—	—	□	□	—	—	—	□	●
James Duke Elem						—	—	—	—	—	□	—	●	—	—	—	?	?	?	?	?	□	—
Olive Pierce School						—	—	—	—	●	●	□	□	●	—	—	?	?	?	?	?	□	—
Ramona Elem										●	●	□	□	●	—	□	□	□	—	—	□	□	●
Mt. Woodson Elem											●	□	□	●	—	□	□	□	●	●	—	□	●
N. County Health Svc												□	●	●	—	—	?	?	?	?	?	□	●
SDCE Stores													□	—	—	—	?	?	?	?	?	□	●
Ramona Community ctr														□	●	—	□	□	□	—	□	□	●
Hwy 78 & Weekend Villa															●	—	—	—	—	—	—	□	●
Dos Picos Park															—	—	?	?	?	?	?	□	●
San Vicente & Wildcat Cyn															—	—	—	—	—	—	—	□	●
Old Julian & Vista Ramona																—	—	—	□	—	—	□	●
Delamo & Rutherford																	?	?	?	?	?	□	●
Ramona Oaks & Tranquility																			●	—	—	□	●
Fernbrook																				—	—	□	●
243xx Watt Rd SDCE																						□	●
Julian Township																						□	●

Key: — no direct communication possible
 □ communication barely possible, open squelch required
 ● communication possible, readable, but weak
 ● strong signal
 ? unknown, at this time

3. Procedures

3.1. Net Activation Procedure

1. In the event of unusual weather or any other emergency, it is requested that all CERT and ROARS members use the ROARS 2-meter repeater (145.300 MHz, -600 kHz offset, 88.5 PL tone) and attempt to contact net control.
Monitoring the Family Radio Service channel 1 (no PL or privacy tones) is also recommended. Monitoring the ECRA Mount Palomar 2-meter repeater (147.030 MHz, +600 kHz offset, 103.5 PL tone) is also recommended.
2. If there is no directed net operating, use the net control script and procedures to establish a directed net.
 - Net control script is in a later section or online at <http://www.roars.net>
 - Indicate the reason for the net activation
 - Call roll of ROARS personnel
 - Maintain list of checkins, checkouts, and time
 - Assist in passing traffic
 - Maintain control of net frequency use
 - Prioritize emergency or priority traffic
 - Assign assistant net control operators as needed
3. Maintain efficient operation of the net as needed.

3.2. Amateur Radio Net Control Script

The following script can be used by a licensed amateur radio operator to begin a net during an emergency or disaster situation. This net may be started on one of the frequencies listed in section 3.2 and anyone can listen to the net on those frequencies.

Attention. Attention. Attention. This is [callsign and name] calling the Ramona Outback Amateur Radio Society emergency services on [date] at [time]. We will be using this frequency for emergency communication and notification. This is [an actual emergency or drill].

This is a directed net. Please make no transmissions unless called upon by the net control station. Emergency traffic may break into this net at anytime and will be acknowledged by net control.

Stand by for important information. [indicate the nature of the emergency and repeat any authoritative information as requested by government agencies].

We will now begin taking checkins by roll call.

We will now accept other checkins.

We will now accept volunteers to act as assistant net control.

We will now accept announcements, queries, or other business for the net.

Periodically, perhaps every 5 minutes or so, please repeat the information on the emergency and remind listeners that the net is in session.

Attention. Attention. Attention. This is [callsign and name] calling the Ramona Outback

Amateur Radio Society emergency services on [date] at [time]. We will be using this frequency for emergency communication and notification. This is [an actual emergency or drill].

This is a directed net. Please make no transmissions unless called upon by the net control station. Emergency traffic may break into this net at anytime and will be acknowledged by net control.

Stand by for important information. *[indicate the nature of the emergency and repeat any authoritative information as requested by government agencies].*

We will now accept checkins, announcements, queries, or other business for the net.

The net will conclude as requirements dictate.

3.3. FRS Net Control Script

The following script can be used by an amateur radio operator or CERT member to begin a Family Radio Service (FRS) net during an emergency or disaster situation.

Attention. Attention. Attention. This is [name] calling the Community Emergency Response Team emergency services on [date] at [time]. We will be using Family Radio Service Channel 1 for emergency communication and notification. This is [an actual emergency or drill].

This is a directed net. Please make no transmissions unless called upon by the net control station. Emergency traffic may break into this net at anytime and will be acknowledged by net control.

Stand by for important information. *[indicate the nature of the emergency and repeat any authoritative information as requested by government agencies].*

We will now begin taking checkins by roll call of CERT members.

We will now accept other checkins.

We will now accept volunteers to act as assistant net control. This is important for the Family Radio Service because it is difficult to cover all areas of Ramona from a single transmitting location. If you would like to be an assistant net control station, please call now by stating your name and location.

We will now accept announcements, queries, or other business for the net.

Periodically, perhaps every 5 minutes or so, please repeat the information on the emergency and remind listeners that the net is in session. This periodic information should be repeated by all assistant net control stations in turn.

Attention. Attention. Attention. This is [name] calling the Community Emergency Response Team emergency services on [date] at [time]. We will be using Family Radio Service Channel 1 for emergency communication and notification. This is [an actual emergency or drill].

This is a directed net. Please make no transmissions unless called upon by the net control station. Emergency traffic may break into this net at anytime and will be acknowledged by net control.

Stand by for important information. *[indicate the nature of the emergency and repeat any*

authoritative information as requested by government agencies].

We will now accept checkins, announcements, queries, or other business for the net.

The net will conclude as requirements dictate.

4. Red Cross Shelter Communications

The Red Cross often uses amateur radio operators when staffing emergency shelters. Amateur radio operators who are at shelters are encouraged to check in with the shelter staff and identify the communications capabilities at the shelter.

The Amateur Radio Emergency Services (ARES) is often used to staff emergency shelters. The Ramona area ARES Emergency Coordinator is accessible via the ROARS point of contact.

- end of public section -



Did you know...



...most modern phones need power to operate. Loss of power = No phone

...that cellular networks are the first to fail in an emergency. Everybody wants to call home or report incidents.

...that after a disaster, there is a very high probability that your cell phone or home phone will not work?

So, what can you do to ensure your family's safety and retain the ability to contact emergency services?

One simple answer is to ensure your emergency kit contains a two-way FRS radio, often referred to as a walkie talkie and cost from \$20 to \$75.

The Family Radio Service (FRS) is an unlicensed (citizen's band) 2-way radio service. Citizens can tune into FRS channel 1 for information or to communicate with the net control during an emergency.

Many FRS radios have privacy codes to help eliminate interference. These must be disabled to hear the emergency traffic or information on FRS channel 1. Consult your radio instructions to determine how to disable privacy codes.

There are many locations in the Ramona area where FRS radios can be used to communicate with other areas. In general, FRS radios work well for line-of-sight communications. You may have difficulty with FRS reception if you are in a low spot or canyon. For best results, always keep your radio in an upright position with the antenna pointing skyward. Consult the Ramona Area Communications Plan for further information and for a chart showing 2-way radio coverage for the Ramona area.

Community wide exercises are conducted every Wednesday starting at 7:30 PM.

So grab your radio, tune to channel one, and check out how you can communicate effectively in a disaster or emergency!



RAMONA COMMUNITY PROTECTION & EVACUATION PLAN
SECTION L – FIRE PROTECTION BY GEOGRAPHIC SUBREGION

Fire Protection by Geographic Subregion

Fire protection within much of the Ramona Planning Area is controlled by the Ramona Municipal Water District, which governs the Ramona Fire Protection District. The Fire District boundaries correspond to the Ramona Water District boundaries, including the Town Center, San Diego Country Estates, the Highland Valley region and various other outlying areas. The Ramona Municipal Water District contracts with the California Department of Forestry for fire prevention services provided by the Ramona Fire Protection District. Various other agencies and groups also provide fire protection to Ramona. A list of all fire protection agencies and groups that serve Ramona, and a brief description of the areas served, follows.

California Department of Forestry and Fire Protection

Battalion Chief Mike Bratton: (760)789-1150

Mt. Woodson Station, 16310 Hwy 67, Ramona, CA 92065 (760)789-1150

Witch Creek Station, 27330 Hwy 78, Ramona, CA 92065 (760)789-1448

Warner Springs Station, 31049 Hwy 79, Warner Springs, CA 92086 (760)782-3560

- Provides fire protection for wildland fires outside of the Ramona Municipal Water District boundaries.

Intermountain Volunteer Fire Department

Cary Coleman, Chief: (760)789-3710

25858 Hwy 78 (at Casner Rd.)

Ramona, CA 82965

- Provides fire protection to lands east of the County Water Authority Line.

Ramona Aerial Attack Base

California Department of Forestry and Fire Protection

Battalion Chief Ray Chaney: (760)789-1370

United States Forest Service

Deborah Lutz, Air Attack Base Manager: (760)789-1520

2498 Montecito Rd.

Ramona, CA 92065

- Provides aerial firefighting support to Southern California.

Ramona Fire Department

Battalion Chief Mike Vogt: (760)788-2250

Station 80, 829 San Vicente Rd., Ramona, CA 92065 (760)788-2222

Station 81, 24462 San Vicente Rd., Ramona, CA 92065 (760)788-2229

Station 82, 3410 Dye Rd., Ramona, CA 92065 (760)788-2269

- Provides fire protection to areas within the Ramona Municipal Water District boundaries.

RAMONA COMMUNITY PROTECTION & EVACUATION PLAN
SECTION L – FIRE PROTECTION BY GEOGRAPHIC SUBREGION

San Diego Rural Fire Protection District
Battalion Chief Dave Nissen: (619)669-1188
14145 Hwy 94
Jamul, CA 91935

- Provides fire protection to the Barona Mesa area of Ramona, south of the San Diego County Estates.

San Pasqual Volunteer Fire Department
Gil Turrentine, Chief
17701 San Pasqual Valley Rd.
San Diego, CA 92025
(760)480-9924

- Provides fire protection to the Highland Hills area of Ramona, north of the Ramona grasslands, and portions of the Highland Valley area.

United States Forest Service
Goose Valley Fire Station
Rick Marinelli, Division Chief: (760)789-0191
1634 Black Canyon Rd.
Ramona, CA 92065

- Provides fire protection to federal lands.

RAMONA COMMUNITY PROTECTION & EVACUATION PLAN
SECTION N – ROAD ACCESS STANDARDS

Road Access Standards

- If the roadway serves more than 2 single-family dwellings, the roadway shall be a minimum of 24 feet in width improved over 28 feet graded.
- If the roadway serves no more than 2 single-family dwellings, the minimum roadway width may be 16 feet improved over 20 feet graded.
- If the existing road easement is 20 feet or less in width, than the roadway width may be reduced to 20 feet minimum improved over 24 feet graded.

Parking

- Where the roadway is 24 feet or less, no parking signs shall be posted. In these areas, if there is a curb, it shall be painted red.
- In areas where lot sizes are less than 1 acre, on-street parking is required.

Vegetation Along Roadways

- Where the improved road width is 16 feet, 20 feet of clearance is required (each side of roadway).
- Where the improved road width is 24 feet, 16 feet of clearance is required (each side of roadway).
- Where the improved road width is 28 feet, 12 feet of clearance is required (each side of roadway).
- Where the improved road width is 32 feet, 10 feet of clearance is required (each side of roadway).

Surfacing

- All private roads shall be surfaced with asphaltic concrete over an aggregate base, except for private roads serving properties in the 18, 20, 23 or 24 land use designations, or serving an agricultural subdivision. In these areas, the above private roads shall be surfaced with a minimum of 6 inches of DG.

RAMONA COMMUNITY PROTECTION & EVACUATION PLAN
SECTION P – LOGISTICS

Community Resource List

Businesses and agencies listed below may be available to provide specific support functions during and following a disaster. School phone numbers and addresses are included only for easy reference. For sheltering information, please refer to Section J – Sheltering.

American Red Cross. 3950 Calle Fortunada, San Diego, CA 92123 **(858)309-1200**

American Red Cross evacuation selected sites will be:

Stocked with supplies to open center for 100 people.

Staffed with ARC personnel.

Operated at the request of County OES, via Sheriff's office or Fire Dept.

Provides Health Services personnel to Red Cross Mass Care/Shelter Centers.

ARC Functions to:

Provide casework services to displaced individuals due to disaster.

Disaster Action Teams (DAT) will open facilities for evacuations and staff until Mass Care/Shelter staffing is completed by ARC HQ.

Current facilities agreements are with Ramona Unified School District.

Upon request, blood and blood products are made available for disaster victims through the nearest Red Cross regional blood center, if blood is in supply.

Community Education is available at ARC HQ, and made available to rural communities upon request.

Amateur Radio Emergency Service (A.R.E.S.)

Don Scott, Emergency Coordinator: **(760)788-6932**

County of San Diego

Dept. of Animal Services: (619)234-2341

Animal Rescue and Humane Society Hotline: (619)299-0871

County of San Diego

Department of Public Works

Ramona Road Station

116 5th St.

Ramona, CA 92065

(760)787-3312

County of San Diego

Department of Parks and Recreation

5201 Ruffin Rd., Ste. P

San Diego, CA 92123

Public Information: (858)694-3030

Dos Picos Park

17953 Dos Picos Park Rd.

Ramona, CA 92065

RAMONA COMMUNITY PROTECTION & EVACUATION PLAN
SECTION P – LOGISTICS

County of San Diego
Department of Parks and Recreation
5201 Ruffin Rd., Ste. P
San Diego, CA 92123

Public Information: (858)694-3030

Collier Park

626 E St.
Ramona, CA 92065

Boys and Girls Club Location

County of San Diego
Department of Parks and Recreation
Open Space and MSCP Office
5201 Ruffin Rd., Ste. P
San Diego, CA 92123

Public Information: (858)694-3030

Barnett Ranch (Thos. Bros. 1172-H5 – San Vicente Rd.)
Mt. Gower Preserve (Thos. Bros. 1173-F1 – 7090 Gunn Stage Rd.)
Simon Park (Thos. Bros. 1173-D3 – Main Entrance off Bassett Court)

County of San Diego

Ramona Airport

Bo Donovan, Airport Manager: (760)788-3366 (Airport Tower)
2926 Montecito Rd.
Ramona, CA 92065

Ramona Community Center

434 Aqua Lane
Operated by Ramona Municipal Water District
Thomas Brammell, General Manager
105 Earlham
Ramona, CA 92065
(760)789-1330

Ramona Outback Amateur Radio (R.O.A.R.S.)

Don Scott, R.O.A.R.S. Net Manager: **(760)788-6932**

Salvation Army

Sierra del Mar Campground
14488 Mussey Grade Rd.
Don Read, Emergency Disaster Services
(619)446-0262

Resources:

Food Services, Hydration Services, Emergency Shelters, Clean Up and
Restoration, Donation Management, Spiritual/Emotional Comfort,
Social Services, Communications

RAMONA COMMUNITY PROTECTION & EVACUATION PLAN
SECTION P – LOGISTICS

Younglife Oakbridge

P. O. Box 1739
Ramona, CA 92065
(760)789-6980

Schools

Ramona Unified School District Office, 720 9th St., Ramona, CA 92065 (760)787-2000

Barnett Elementary School, 23925 COUNA Way, Ramona, CA 92065

Principal: Shelagh Appleman (760)787-3500

Hanson Elementary School, 2520 Boundary Ave., Ramona, CA 92065

Principal: Carol Tennebaum (760)787-2100

James Dukes Elementary School, 24908 Abalar Way, Ramona, CA 92065

Principal: Paige Schwartz (760)788-5060

Montecito High School, 720 9th St., Ramona, CA 92065

Principal: Gary Tiegs (760)788-5070

Mt. Woodson Elementary School, 17427 Archie Moore Trail, Ramona, CA 92065

Principal: Theresa Grace (760)788-5120

Mt. Valley Academy, 1010 Ramona St., Ramona, CA 92065

Principal: Ellen Burgess (760)787-3600

Olive Peirce Middle School, 1521 Hanson Ln., Ramona, CA 92065

Principal: Linda Solis (760)788-5050

Ramona Community School, 1010 Ramona St., Ramona, CA 92065

Principal: Ellen Burgess (760)787-3600

Ramona Elementary School, 415 8th St., Ramona, CA 92065

Principal: Phyllis Munoz (760)788-5010

Ramona High School, 1401 Hanson Ln., Ramona, CA 92065

Principal: Tony Newman (760)787-4000

Equipment Rental, Fuel and Water

RentX

2055 Main St.
Ramona, CA 92065
(760)789-0931

Resources:

Generators (3000 Watt to 4500 KW)

Safety Kits

Safety Goggles

Hard Hats

Dust Masks

Compressors

Light Towers

Fuel

RAMONA COMMUNITY PROTECTION & EVACUATION PLAN
SECTION P – LOGISTICS

One-Stop Equipment Rental & Landscape Supply

Ramona Equipment Rental
254 Pine St.
Ramona, CA 92065
(760)789-8010

Resources:

Generators (3.5 KW to 150 KVA)
Hard Hats
Safety Glasses/Goggles
Compressors
Light Towers
Fuel

PIVA Equipment Rental

124 10th St.
Ramona, CA 92065
(760)788-4445

Resources:

Generators (1000 Watt to 6.0 KW)
Light Towers with Generator 6.0 KW
5 HP Gas Compressors
2 HP Electric Compressors

Ramona Oil Company (Owned by Ramona Oil DBA Pacific Pride)

1000 Olive Street
P.O. Box 88
Ramona, Ca 92065-0088
760-789-0410

Famous Ramona Water, Inc

250 Aqua Lane
P.O. Box 1195
Ramona, Ca. 92065-0860
760-789-0174 Phone
760-789-1066 Fax

Area Arenas

Casey Tibbs Western Center

Location: San Diego Country Estates
Address: 15910 Avenal Lane (Pappas Road at Avenal Lane)
(760)789-3407

RAMONA COMMUNITY PROTECTION & EVACUATION PLAN
SECTION P – LOGISTICS

Copper Meadows Equestrian Center

Location: Near Ramona Airport
Address: 633 Montecito Road
Web site: www.copper-meadows.com

Creek Hollow Ranch

Location: Old Julian Highway Area
Address: 26131 Old Julian Highway
(760)788-3793
Email: info@creekhollowranch.com

Fred Grand Arena

Location: In Town at East End
Address: Aqua Lane
(760)788-0811

Hidden Horse Ranch

Address: 23970 E. Old Julian Highway
Ramona, CA 92065
(760)789-9514
www.HiddenHorseRanch.com

Holly Oaks Arena

Location: Dye Road at Holly Oaks Drive
Contact: George Eastwood

International Equestrian Center

Location: San Diego Country Estates
Address: 16911 Gunn Stage Road
(760)789-3407

Mountain Valley Ranch

Location: East End, corner of Magnolia
Address: 842 Highway 78
Contact: Clay and Joyce Hatch

Hospitals

Alvarado Hospital, 6655 Alvarado Rd., San Diego, CA **(691)287-3270**

Grossmont Hospital, 5555 Grossmont Center Dr., La Mesa, CA 91942 **(619)465-0711**

Kaiser Permanente, 4637 Zion Ave., San Diego, CA 92120 **(619)528-5151**

RAMONA COMMUNITY PROTECTION & EVACUATION PLAN
SECTION P – LOGISTICS

Palomar Medical Center (Trauma Center), 555 E. Valley Parkway, Escondido, CA
(760)739-3000

Pomerado Hospital, 15615 Pomerado Rd., Poway, CA 92064 **(858)613-4000**

Scripps Mercy (Trauma Center), 4077 5th Ave., San Diego, CA 92103 **(619)294-8111**

UCSD Medical Center (Trauma and Burn Center), 200 W. Arbor Dr., San Diego, CA
92103 **(619)543-6222**

RAMONA COMMUNITY PROTECTION & EVACUATION PLAN
SECTION Q – VEGETATION MANAGEMENT WEBSITES

**VEGETATION MANAGEMENT
WEBSITES**

Topic	Description	Where to get information
<p>A. <u>Associations, Fire</u> National Fire Protection Association National Weather Service US Fire Administrator US Geological Survey Fire Alliance, California California Fire Safe Council Fire Wise</p> <p><u>Local Agencies:</u> The Burn Institute Calif. Dept. of Forestry & Fire Protection (CDF) Fire Safe Council of San Diego County Forest Service (USFS)/ Dept of Ag Animal Control, County Animal Rescue Fire & Resource Assessment Program US Dept of Interior (BLM,BIA Fire Mgt.</p>	<p>Veg. Mtg. Mapping</p> <p>Services to burn victims</p> <p>Modeling & Mapping</p>	<p>www.nfpa.org nws.noas.gov www.usfa.fema www.usgs.gov www.cafirealliance.org www.firesafecouncil.org www.firewise.org</p> <p>www.burninstitute.org www.fire.ca.gov</p> <p>www.firesafecouncil.org www.r5.fs.fed.us (619) 236-4250 (619) 299-7012 www.frap.fire.ca.gov</p> <p>www.doi.gov</p>
<p>C. Calif. Dept. of Forestry & Fire Protection Community legal structure/jurisdictional boundaries Calif. Envir Quality Act CEQA Calif. Watershed information Census data</p>	<p>Population and demographics</p>	<p>www.fire.ca.gov http://ceres.ca.gov/planning/gov</p> <p>http://ceres.ca.gov/planning/nhd http://ceres.ca.gov/watershed www.census.gov</p>
<p>D. Defensible Space</p> <p>Debris Disposal</p>		<p>www.leginfo.ca.gov www.firesafecouncil.org www.grayback.com/applegate-valley See above, applegate valley/fireplan</p>
<p>E. Ecology, of fire</p> <p>Emergency Services American Red Cross Emergency, San Diego Office of Emer. Svc. Emergency, San Diego Sheriff</p>		<p>www.fireecology.org www.ice.ucdavis.ed/cafe www.redcross.org www.sdarc.org www.sdcounty.ca.gov www.sdsheriff.net www.sdge.com www.fema.gov</p>

RAMONA COMMUNITY PROTECTION & EVACUATION PLAN
SECTION Q – VEGETATION MANAGEMENT WEBSITES

<p>Dept. Emergency, SDG&E FEMA State OES Erosion Control How to guides for Emergency, hazards, est. losses, creating mitigation plans.</p>		<p>www.oes.ca.gov www.ca.nrcs.usda.gov www.fema.gov/fima/planresource.shtm www.fema.gov/hazards</p>
<p>F. Fire Associations (see A) Fire Plan, Basic Fire Plan, Calif. Fuel Modification Funding sources: Fire Alliance, California Fire Safe Council, State of Calif. Esri GIS/Mapping Environmental</p>	<p>Useful data, mapping etc.</p>	<p>www.firesafenetwork.org www.leginfo.ca.gov www.fire.ca.gov/abb/1st.html www.cafirealliance@org/grant.asp www.firesafecouncil.org www.esri.com www.sdfoundation.org</p>
<p>Dept of Agriculture Programs The below are funding programs after a disaster and are administered by the Natural Resources Conservation Service (NRCS) at (760) 745-2061</p> <ul style="list-style-type: none"> <input type="checkbox"/> Emergency Watershed Protection Program (EWP) – program to protect the watershed from mud slides, debris, erosion. <input type="checkbox"/> Emergency Conservation Program (ECP) – program provides funding for farmers/ranchers to rehabilitate land damaged by wind, erosion, flooding, etc. <input type="checkbox"/> Environmental Quality Incentives Program. (EQIP) –program is for farms, ranches, nurseries etc. for land owners to do best management practices (BMP) for soil conservation. 		
<p>G. GIS</p>	<p>Mapping, disaster and emergency management</p>	<p>www.esri.com</p>
<p>H. Hazard Mitigation Plan</p>		<p>www.opr.ca.gov</p>
<p>I. Insurance Invasive Plants</p>	<p>For rating of your area For information see:</p>	<p>www.insurance.ca.gov www.ca-ipc.org www.cdfa.ca.gov www.invasivespecies.gov http://tncweeds.ucdavis.edu</p>
<p>J-K</p>		
<p>L. Landscaping</p>	<p>Drought-Tolerant plants</p>	<p>www.firesafe.com/firescape.ntml</p>

RAMONA COMMUNITY PROTECTION & EVACUATION PLAN
SECTION Q – VEGETATION MANAGEMENT WEBSITES

M. Mapping	See GIS	www.geographynetwork.com/maps/index.Html
N. National Fire Plan		www.fireplan.gov
O.		
<p>P. Planning County of San Diego Planning & Land Use</p> <p>San Diego County Regional Comp. Plan (DRAFT) Note: also conducts free workshops on grant writing, has extensive census, mapping, planning and other data for the 18 cities and county.</p> <p>Planning, Fire Hazard: Permits, Burning Prescribed Burning Plan, Vegetation Management</p>	<p>▼</p> <p>By SANDAG</p> <p>Information for land use practitioners. See local fire agency & phone book.</p>	<p>www.co.sandiego.ca.us/cnty/cntydepts/landuse Fire Code Information: (858a) 694-2960</p> <p>www.sandag.org (619) 699-1900</p> <p>www.opr.ca.gov</p> <p>www.firesafentework.org</p> <p>www.arb.ca.gov/smp/smp.htm www.arb.ca.gov www.ucfpl.ucop.edu/l-</p>
S. San Diego County San Diego Gas & Electric	For removal of dead or dying trees near/on their property	<p>www.co.san-diego.us/ www.sdge.com</p>
T. Threatened and endangered Habitat		www.dfg.ca.gov
V. Vegetation Management Program	A cost share program by the CDF	www.fire.ca.gov/resourcemanagement/vegetationmanagment.asp
W. Weed control	See your local RCD or NRCS.	www.cdfa.ca.gov/phpps/ipc/noxweedinfo

Deleted: ¶
¶