



**County of San Diego
Planning & Development Services
BUILDING DIVISION**

ACCESSIBILITY CORRECTION LIST Multifamily Housing	5A
Entrances, Exits, and Interior Routes of Travel	

RECORD ID:	OWNER ON APPLICATION:
------------	-----------------------

ACCESSIBLE MEANS OF EGRESS

- All accessible spaces shall be served by at least as many accessible means of egress as required means of egress per CBC 1006.2 and CBC 1006.3
CBC 1009.1
- Each accessible means of egress shall be continuous to a public way and consist of one or more of the following:
Exception: Where exit discharge is inaccessible, an exterior area for assisted rescue per accessibility correction list 7A shall be provided
Exception: An accessible means of egress including an exit stairway open to the exterior shall include either an area of refuge or exterior area for assisted rescue per accessibility correction list 7A
 - Accessible routes per this accessibility correction list
 - Stairways within vertical exit enclosures per CBC 1020 and accessibility correction list 7A
 - Exterior exit stairways per accessibility correction list 7A
 - Elevators per accessibility correction list 8A
 - Platform lifts per accessibility correction list 8A
 - Horizontal exits per CBC 1022
 - Pedestrian ramps per accessibility correction list 4A
 - Areas of refuge per accessibility correction list 7A or 8ACBC 1009.2
- In buildings where a required accessible floor is four or more stories above or below a level of exit discharge, at least one accessible means of egress shall be via elevator per accessibility correction list 8A.
Exception: In buildings equipped throughout with an automatic sprinkler system, elevator shall not be required on floors provided with a horizontal exit and located at or above the level of exit discharge
Exception: In buildings equipped throughout with automatic sprinkler system, elevator shall not be required on floors served by pedestrian ramp per accessibility correction list 4A
CBC 1009.2.1

ENTRANCES AND EXITS

- All primary entrances and exterior ground-floor exits shall be accessible to persons with disabilities.
Exception: Entrances to and exits from floors not required to be accessible
CBC 1117A.2
- Where a ground-floor dwelling unit has a separate entrance, each such ground-floor dwelling unit shall be served by an accessible route:
Exception: Dwelling units exempted per site impracticality tests of accessibility correction list 1A
CBC 1117A.3
- Where a covered multifamily dwelling includes multiple entrances serving clusters of dwelling units sharing an entrance, each such entrance shall be accessible.
Exception: Only one entrance must be accessible to each ground floor of a covered multifamily dwelling unless an individual dwelling unit has a separate exterior entrance
CBC 1117A.4
- Revolving doors shall not be used as accessible entrances.
CBC 1126A.1

**THIS DOCUMENT IS FOR PLAN REVIEW ONLY.
CORRECTION LIST ITEMS AND FIGURES MAY NOT BE REPRODUCED OR COPIED ON PLANS.
IF CONFLICTS EXIST BETWEEN CODE TEXT AND FIGURES, THE CODE TEXT SHALL GOVERN.**

INTERIOR ROUTES OF TRAVEL

- 8. Within covered multifamily dwellings and accessory common-use facilities, provide an accessible route of travel connecting accessible entrances with all accessible spaces and covered multifamily dwelling units.

Exception: Accessible routes within covered multifamily dwelling units shall comply with accessibility correction list 15A
CBC 1119A.1 and CBC 1130A.1

- 9. Where a particular story contains rooms or spaces at different floor elevations, specify floor elevations at each room/space.

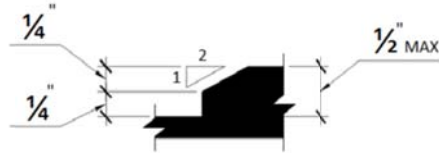
CBC 1120A.3

- 10. Floors of a particular story shall be a common level throughout or connected by **at least one of the following:**

Exception: Changes in level up to 1/4 inch

Exception: Changes in level between 1/4 inch and 1/2 inch with maximum 50% beveled slope per CBC Figure 11A-1F(b)

- Sloping surface with maximum 5% running slope
- Pedestrian ramps per accessibility correction list 4A
- Passenger elevators per accessibility correction list 8A
- Platform lifts per accessibility correction list 8A



(b) BEVELED CHANGE IN LEVEL
 FIGURE 11A-1F
 CHANGE IN LEVEL

CBC 1121A

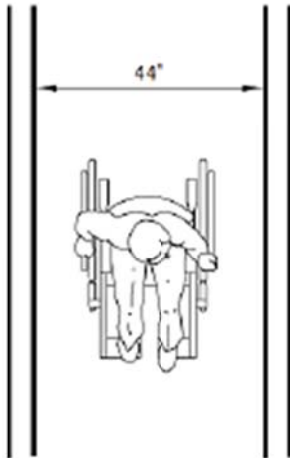
- 11. Dimension all corridors and hallways to comply with the following:

- Minimum 44-inches wide if serving occupant load of 10 or greater
- Minimum 36-inches wide if serving occupant load fewer than 10

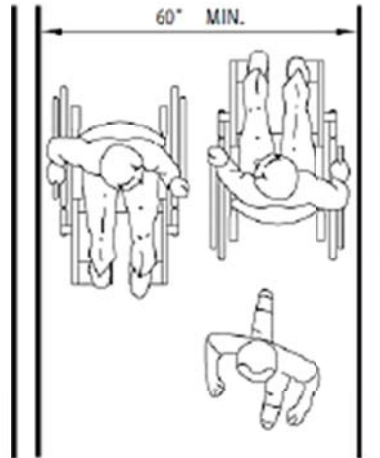
CBC 1119A.3

- 12. Dimension **one of the following** per CBC Figure 11A-1L at corridors and hallways exceeding 200 feet in length:

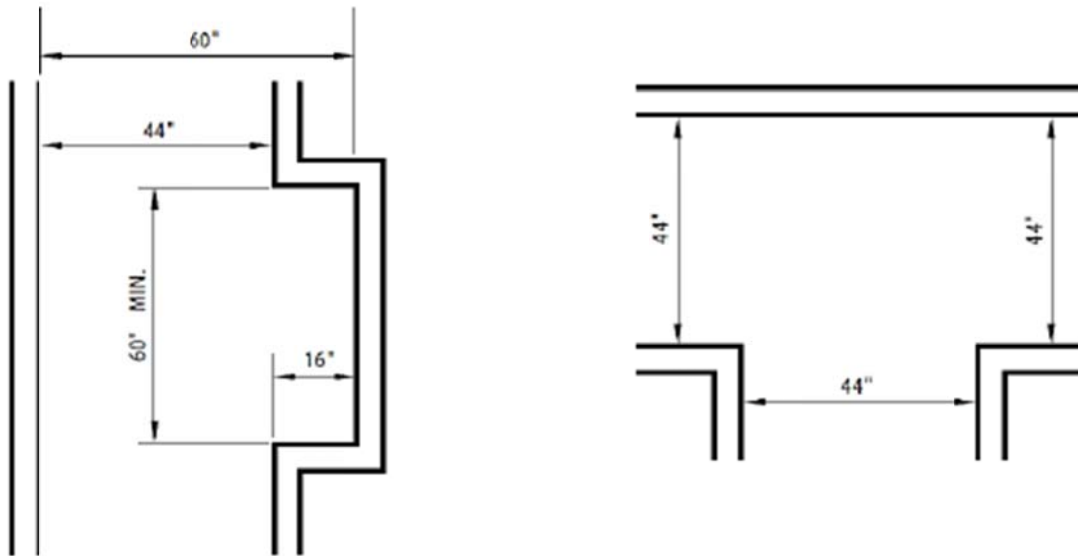
- Minimum 60-inch clear width
- Minimum 60-inch-wide by 60-inch-long passing space(s) at maximum 200-foot intervals
- Minimum 44-inch-wide T-shaped intersection(s) – where base and arms extend minimum 48 inches beyond intersection – at maximum 200-foot intervals



(a) MINIMUM WIDTH FOR CORRIDORS



(b) MINIMUM WIDTH FOR CORRIDORS OVER 200 FEET

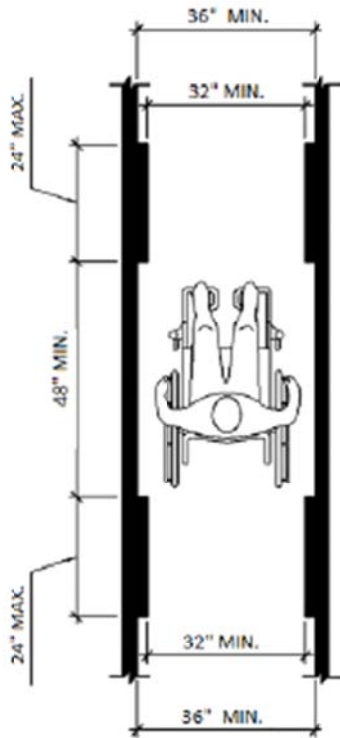


(c) PASSING METHODS FOR CORRIDORS WITH LENGTH OVER 200 FEET AND WIDTH LESS THAN 60"

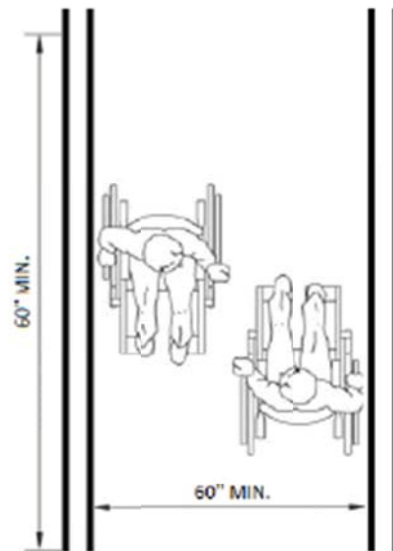
FIGURE 11A-1L
 INTERIOR ACCESSIBLE ROUTE (CORRIDOR) OVER 200 FEET; OCCUPANT LOAD 10 OR MORE

CBC 1119A.4 and CBC 1138A.1.2

- 13. Dimension minimum 36-inch-wide clear access to all areas within all accessible common-use rooms and spaces.
Exception: Minimum 32-inch clear width acceptable – up to 24-inch length – per CBC Figure 11A-1E



MINIMUM CLEAR WIDTH FOR SINGLE WHEELCHAIR



MINIMUM CLEAR WIDTH FOR TWO WHEELCHAIRS

FIGURE 11A-1E
 WHEELCHAIR PASSAGE WIDTH

CBC 1138A.1.1 and CBC 1138A.1.2

14. Dimension adequate wheelchair turnaround space complying with one of the following in all accessible common-use rooms and spaces:

- Minimum 60-inch-diameter per CBC Figure 11A-1D(a)
- Equivalent T-shaped space per CBC Figure 11A-1D(b)

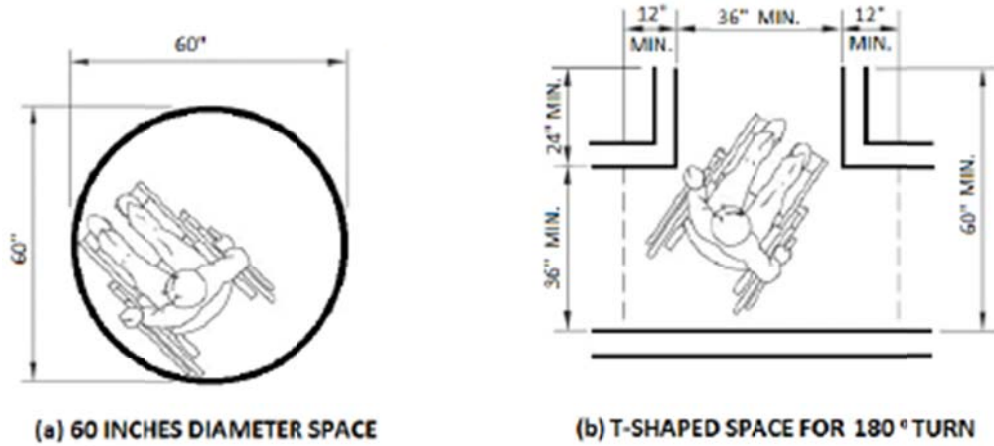
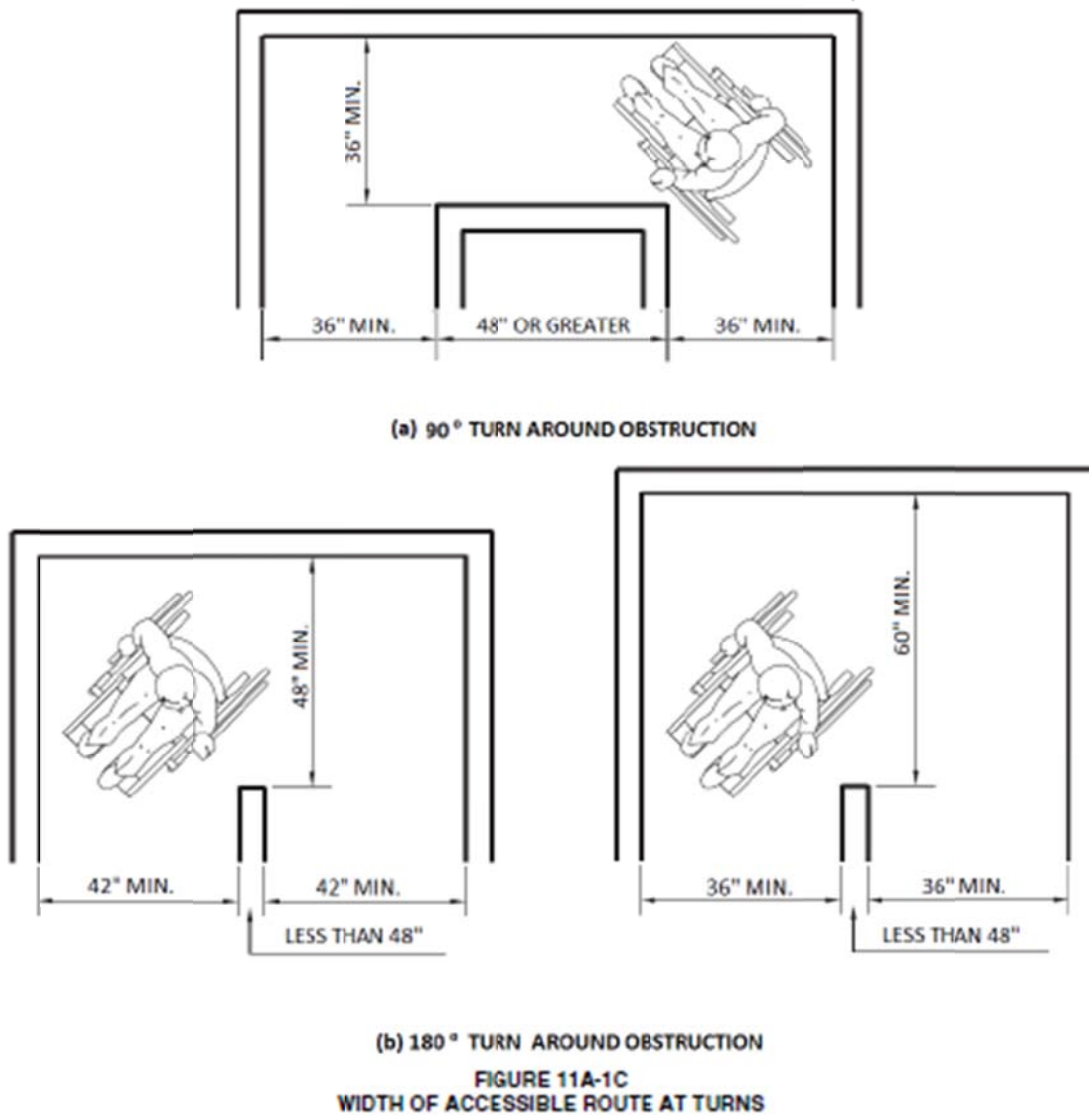


FIGURE 11A-1D
WHEELCHAIR TURNING SPACE

CBC 1138A.1.3

15. Dimension adequate wheelchair clearance for circulation around an obstruction per CBC Figure 11A-1C(a) and (b).



(b) 180° TURN AROUND OBSTRUCTION
FIGURE 11A-1C
WIDTH OF ACCESSIBLE ROUTE AT TURNS

CBC 1120A.1 and CBC 1138A.1.5

16. Dimension vertical clearance complying with the following at all accessible or adaptable rooms and spaces:

- Minimum 84 inches where part of required egress path
Exception: Minimum 80 inches acceptable at doorways and arches maximum 24 inches deep
- Minimum 80 inches for other pedestrian ways

CBC 1125A.2

17. Provide cane-detectable barrier at maximum 27 inches above floor at areas adjoining accessible routes or spaces with less than 80 inches vertical clearance.

CBC 1125A.2

18. Specify rounded corners with minimum 1/8-inch radius of curvature for any sign projecting from a post and with bottom edge less than 80 inches above walking surface

CBC 1125A.4

OPERABLE WINDOWS

19. Where glazed openings provided in accessible rooms or spaces for operation by occupants, identify at least one complying with the following:

- Minimum 30-inch-by-48-inch clear floor space provided adjacent to window
- Operable parts of window within reach ranges per item 20
- Window operable with maximum 5 pounds of force
- Window operable with one hand and without tight grasping, pinching, or twisting of wrist

CBC 1126A.8 and CBC 1138A.4

MISCELLANEOUS REQUIREMENTS

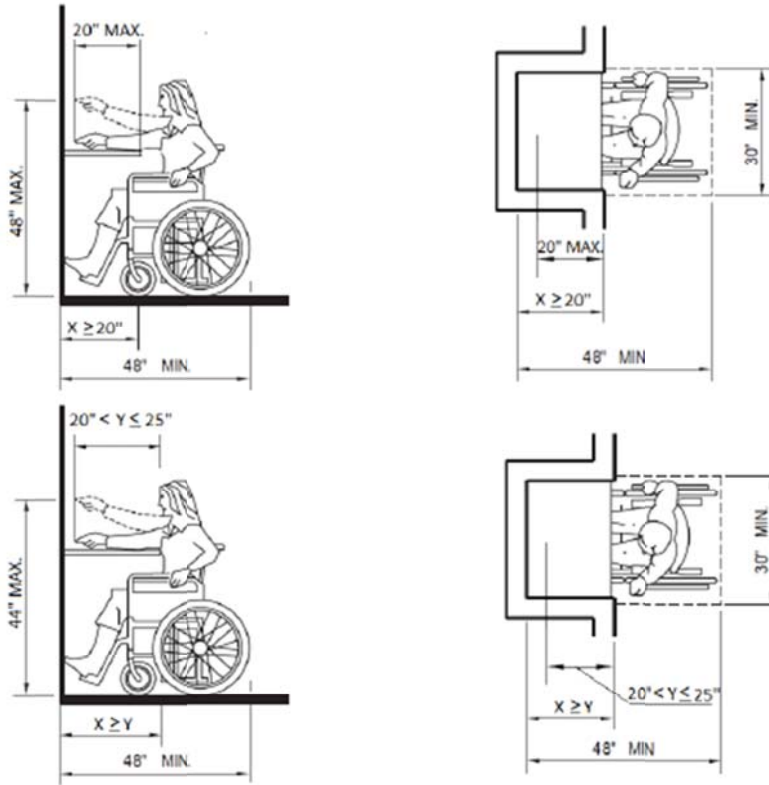
20. Specify reach ranges shall comply with the following as applicable:

- Unobstructed forward reach per CBC Figure 11A-11(a):
 - o High forward reach maximum 48 inches and low forward reach minimum 15 inches above finished floor



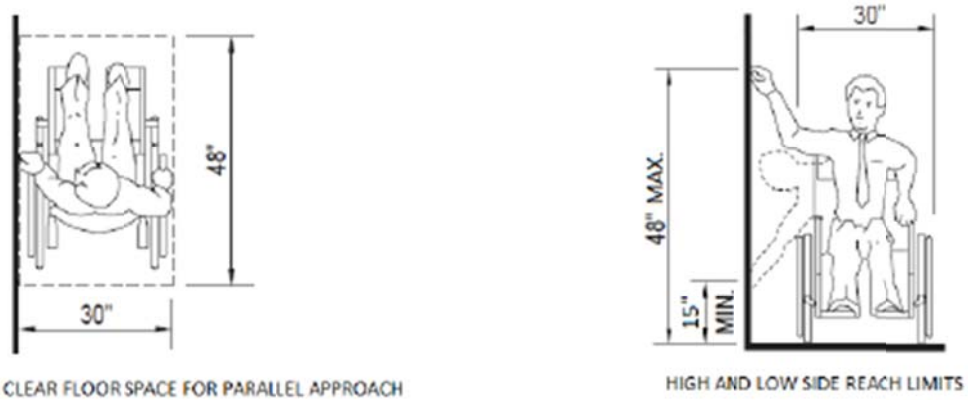
(a) UNOBSTRUCTED FORWARD REACH
FIGURE 11A-11
FORWARD REACH

- Obstructed high reach per CBC Figure 11A-11(b):
 - o Where reach depth maximum 20 inches, high forward reach maximum 48 inches above finished floor
 - o Where reach depth exceed 20 inches, high forward reach maximum 44 inches and reach depth maximum 25 inches
 - o Clear floor space extending beneath obstructing element for distance not less than required reach depth over obstruction

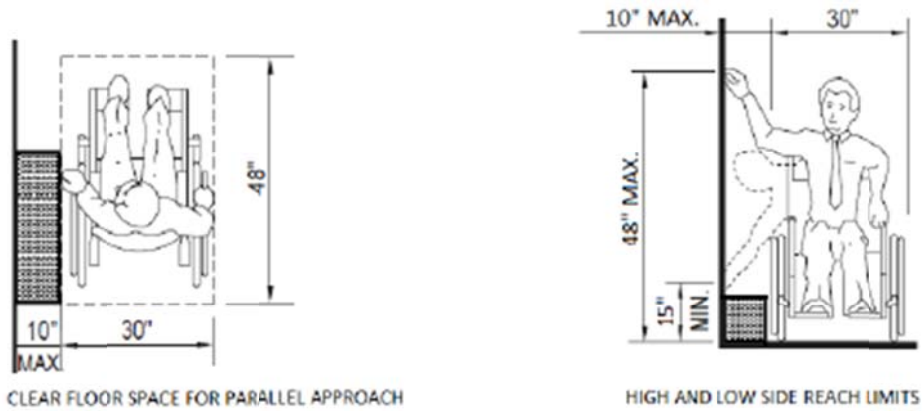


(b) FORWARD REACH OVER OBSTRUCTION
 FIGURE 11A-11
 FORWARD REACH

- Where parallel approach allowed, unobstructed side reach per CBC Figure 11A-1J(a):
 - High side reach maximum 48 inches and minimum 15 inches above finished floor
Exception: Obstruction maximum 10-inches deep allowed between clear floor space and element reached per CBC Figure 11A-1J(b)



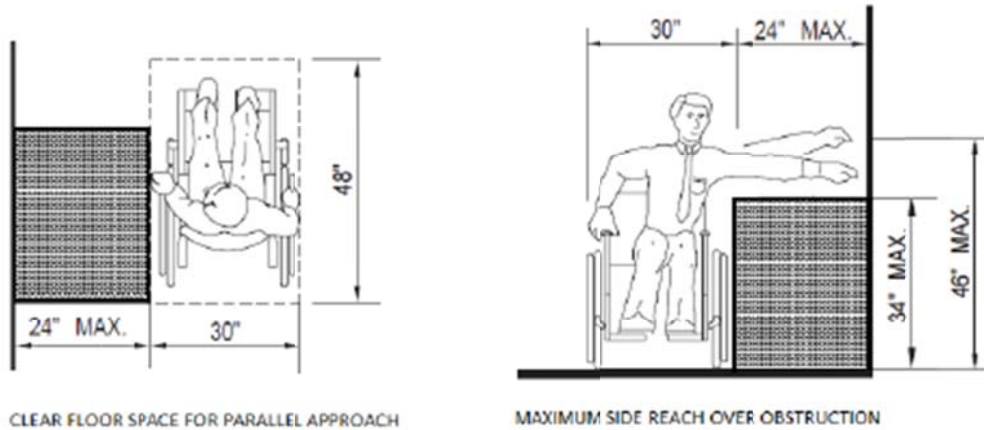
(a) UNOBSTRUCTED SIDE REACH



(b) SIDE REACH OVER OBSTRUCTION 10" MAXIMUM

FIGURE 11A-1J
SIDE REACH

- Where parallel approach allowed, obstructed side reach per CBC Figure 11A-1J(c):
 - Exception:** Kitchen countertops in dwelling units and the top of washing machines and clothes dryers may be maximum 36 inches above finished floor
 - Height of obstruction 34 inches maximum
 - Depth of obstruction 24 inches maximum
 - Where reach depth maximum 10 inches, high side reach maximum 48 inches
 - Where reach depth exceeds 10 inches, high side reach maximum 46 inches and reach depth maximum 24 inches



(c) SIDE REACH OVER OBSTRUCTION 10" MINIMUM AND 24" MAXIMUM

FIGURE 11A-1J
SIDE REACH

CBC 1138A.3

21. Specify any electrical switches or outlets in common-use areas shall be located per the following:
- Exception:** Receptacle outlets installed as part of permanent baseboard heaters are exempt from height and reach limits
 - Exception:** Required receptacle outlets allowed in floors when adjacent to sliding panels or walls
 - Exception:** Baseboard electrical outlets used in relocatable partitions, window walls, or other electrical convenience floor outlets are exempt from minimum height limits
 - Minimum 15 inches from bottom of receptacle/outlet box to finished floor
 - Maximum 48 inches from top of receptacle/outlet box to finished floor
 - Within CBC 1138A.3 reach ranges

CBC 1136A.1, CBC 1136A.2, and CBC 1138A.3

22. Specify any floor surfaces shall be stable, firm, and slip-resistant.

CBC 1119A.2

23. Specify any carpet shall comply with the following:

- Level loop, textured loop, level cut pile, or level cut/uncut pile texture
- Maximum 1/2-inch pile height
- Firm backing or no backing
- Exposed edges fastened to floor surface with trim along entire length of exposed edge
- Edge trim with maximum 1/4-inch vertical change in level or beveled change in level between 1/4 inch and 1/2 inch with maximum 50% beveled slope

CBC 1119A.2 and CBC 1121A

SIGNAGE

24. Identify on plans location of each sign required or provided per items 25 through 29 and coordinate with signage schedule and details indicating the following:
- Sign dimensions
 - Character and symbol dimensions
 - Character, symbol, and background colors
 - Braille dimensions
 - Dimension of vertical clearance above floor or ground
 - Dimension of any horizontal projection from wall
- CBC 1143A.1*
25. Provide sign at each required accessible entrance displaying International Symbol of Accessibility.
- CBC 1110A.2*
26. Provide sign including the following at each exit door to an inaccessible exit:
- Exception:** Signage not required within dwelling units
- International Symbol of Accessibility
 - Directions to nearest accessible exit per visual character requirements of item 30
- CBC 1009.10 and CBC 1143A.4*
27. Provide tactile signage complying with the following at exit doors:
- Exception:** Signage not required within dwelling units
- Each grade-level exterior exit door required to have visual exit signage shall be identified by tactile sign with word "EXIT"
 - Each exit door leading directly to grade-level exterior exit via stairway or ramp and required to have visual exit signage shall be identified by tactile sign with the following words as applicable:
 - o "EXIT STAIR DOWN"
 - o "EXIT RAMP DOWN"
 - o "EXIT STAIR UP"
 - o "EXIT RAMP UP"
 - Each exit door leading directly to grade-level exterior exit via interior exit stairway or exit passageway and required to have visual exit signage shall be identified by tactile sign with words "EXIT ROUTE"
 - Each exit access door required to have visual exit signage from an interior room or area to a corridor or hallway shall be identified by tactile sign with words "EXIT ROUTE"
 - Each exit door through a horizontal exit and required to have visual exit signage shall be identified by tactile sign with words "TO EXIT"
 - Placed on approach side as one exits room or space
 - Placed adjacent to door on latch side
- Exception:** Where provided at double doors with two active leaves, signage shall be located to the right of the doors
- Exception:** Where no wall space available on latch side of single door or right side of double doors, signage shall be located on nearest adjacent wall
- Located so clear floor space minimum 18 inches by 18 inches – centered on tactile characters – provided beyond arc of any door swing between closed and 45-degree-open positions
 - Mounted per the following:
 - o Minimum 48 inches from finish floor or ground surface to baseline of lowest line of Braille
 - o Maximum 60 inches from finish floor or ground surface to baseline of highest line of raised characters
 - Visual characters per item 30
 - Raised characters/symbols per item 32
 - Corresponding Braille per item 33 provided beneath raised characters and symbols
- CBC 1013.4 and CBC 1143A.1*
28. Provide tactile signage complying with the following at exit doors with delayed-egress locks:
- Reading: "KEEP PUSHING. THIS DOOR WILL OPEN IN 15 SECONDS. ALARM WILL SOUND."
- Exception:** In facilities housing Alzheimer's or dementia clients, a delay of 30 seconds is allowed
- Placed on approach side as one exits room or space
 - Placed adjacent to door on latch side
- Exception:** Where provided at double doors with two active leaves, signage shall be located to the right of the doors
- Exception:** Where no wall space available on latch side of single door or right side of double doors, signage shall be located on nearest adjacent wall
- Located with clear floor space minimum 18 inches by 18 inches – centered on tactile characters – provided beyond arc of any door swing between closed and 45-degree-open positions
 - Mounted per the following:
 - o Minimum 48 inches from finish floor or ground surface to baseline of lowest line of Braille
 - o Maximum 60 inches from finish floor or ground surface to baseline of highest line of raised characters
 - Visual characters per item 30
 - Raised characters/symbols per item 32
 - Corresponding Braille per item 33 provided beneath raised characters and symbols

CBC 1010.1.9.7(6) and CBC 1143A.1

29. Any room identification signs shall comply with the following at each accessible room:
- Placed on approach side as one enters room or space
 - Placed adjacent to door on latch side
 - Exception:** Where provided at double doors with two active leaves, signage shall be located to the right of the doors
 - Exception:** Where no wall space available on latch side of single door or right side of double doors, signage shall be located on nearest adjacent wall
 - Located with clear floor space minimum 18 inches by 18 inches – centered on tactile characters – provided beyond arc of any door swing between closed and 45-degree-open positions
 - Mounted per the following:
 - o Minimum 48 inches from finish floor or ground surface to baseline of lowest line of Braille
 - o Maximum 60 inches from finish floor or ground surface to baseline of highest line of raised characters
 - Visual characters per item 30
 - Any pictograms per item 31
 - Raised characters/symbols per item 32
 - Corresponding Braille per item 33 provided beneath raised characters and symbols

CBC 1143A.2

30. Specify on signage schedule and/or details visual characters on any directional and informational signs complying with the following:
- Located minimum 40 inches above finished floor
 - Characters and background with non-glare finish
 - Characters contrasting with background, either light characters on dark background or dark characters on light background
 - Text shall be in a horizontal format
 - Line spacing between baselines of separate character lines at minimum 135 percent and maximum 170 percent of character height
 - Characters shall be uppercase or lowercase or a combination of both
 - Characters shall be conventional in form – i.e., not italic, oblique, script, highly decorate, or of other unusual form
 - Character font with uppercase letter “O” width minimum 60 percent and maximum 110 percent uppercase letter “I” height
 - Characters with stroke thickness of uppercase letter “I” minimum 10 percent and maximum 20 percent character height
 - Characters spaced with closest points of adjacent character minimum 10 percent and maximum 35 percent of character height
 - Character height sized according CBC Table 1143A.5 and based on uppercase letter “I”

**TABLE 1143A.5
VISUAL CHARACTER HEIGHT**

HEIGHT TO FINISH FLOOR FROM BASELINE OF CHARACTER	HORIZONTAL VIEWING DISTANCE	MINIMUM CHARACTER HEIGHT
40 inches (1016 mm) to less than or equal to 70 inches (1778 mm)	Less than 72 inches (1829 mm)	$\frac{5}{8}$ inch (15.9 mm)
	72 inches (1829 mm) and greater	$\frac{5}{8}$ inch (15.9 mm), plus $\frac{1}{8}$ inch (3.2 mm) per foot (305 mm) of viewing distance above 72 inches (1829 mm)
Greater than 70 inches (1778 mm) to less than or equal to 120 inches (3048 mm)	Less than 180 inches (4572 mm)	2 inches (51 mm)
	180 inches (4572 mm) and greater	2 inches (51 mm), plus $\frac{1}{8}$ inch (3.2 mm) per foot (305 mm) of viewing distance above 180 inches (4572 mm)
Greater than 120 inches (3048 mm)	Less than 21 feet (6401 mm)	3 inches (76 mm)
	21 feet (6401 mm) and greater	3 inches (76 mm), plus $\frac{1}{8}$ inch (3.2 mm) per foot (305 mm) of viewing distance above 21 feet (6401 mm)

CBC 1143A.5

31. Specify on signage schedule and/or details pictograms on any directional and informational signs complying with the following:
- Field height of minimum 6 inches
 - Characters and Braille not within pictogram field
 - Pictograms and field with non-glare finish
 - Pictograms contrasting with field, either light pictogram on dark field or dark pictogram on light field
 - Include text descriptors complying with raised character, Braille, and mounting height provisions of CBC 1143A.6 and CBC 1143A.7

CBC 1143A.6

32. Raised characters on signage shall comply with the following:
- Characters minimum 5/8-inch and maximum 2-inches high based on height of uppercase letter “I”
 - Characters raised minimum 1/32 inch
 - Text in horizontal format
 - Characters sans serif and uppercase
 - Width of uppercase letter “O” minimum 60 percent and maximum 110 percent height of uppercase letter “I”
 - Stroke thickness of uppercase letter “I” maximum 15 percent height of character
 - Spacing between individual raised characters per the following:
 - o Where characters have rectangular cross sections, minimum 1/8 inch and maximum 4 times raised character stroke width
 - o Where characters have non-rectangular cross sections, minimum 1/16 inch and maximum 4 times raised character stroke width at base of cross sections and minimum 1/8 inch and maximum 4 times raised character stroke width at top of cross sections

- Spacing between baselines of separate lines of raised characters of minimum 135% and maximum 170% of raised character height
- Characters separated minimum 3/8 inch from raised borders and decorative elements

CBC 1143A.6

33. Braille on signage shall comply with the following:

- Contracted (Grade 2)
- Braille flush left or centered and placed minimum 3/8 inch and maximum 1/2 inch below raised characters or symbols
- Braille in horizontal format
- When raised characters are multilined text, all Braille placed together below all raised text lines
- Dots domed or rounded with dimensions per CBC Table 1143A.7.1

TABLE 1143A.7.1 BRAILLE DIMENSIONS

<i>MEASUREMENT RANGE</i>	<i>MINIMUM IN INCHES MAXIMUM IN INCHES</i>
<i>Dot base diameter</i>	<i>0.059 (1.5 mm) to 0.063 (1.6 mm)</i>
<i>Distance between two dots in the same cell¹</i>	<i>0.100 (2.5 mm)</i>
<i>Distance between corresponding dots in adjacent cells¹</i>	<i>0.300 (7.6 mm)</i>
<i>Dot height</i>	<i>0.025 (0.6 mm) to 0.037 (0.9 mm)</i>
<i>Distance between corresponding dots from one cell directly below¹</i>	<i>0.395 (10 mm) to 0.400 (10.2 mm)</i>

1. Measured center to center.

CBC 1143A.7